

Modeling and Recognizing the World with the Distributed Camera

Institutions: Cornell University, Indiana University

- Lead Investigator: Noah Snavely (CU)
- Current Team Members:

Dan Huttenlocher (CU) and Dave Crandall (IU)

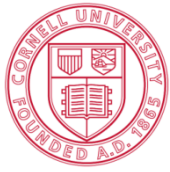


The Age of Exopixel Image Data

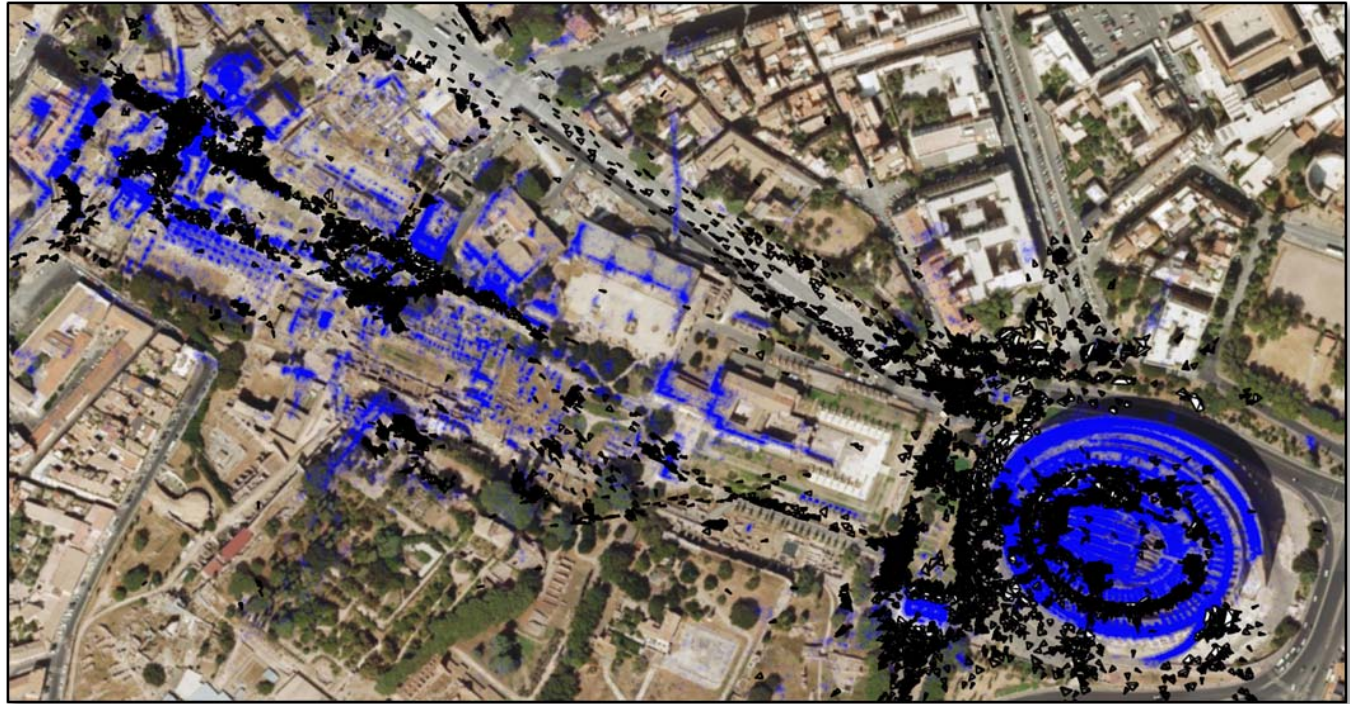


- Hundreds of billions of photos available online
- Millions uploaded every hour
- Many other large sources of imagery
- The Internet is becoming a **living visual record** of our world

- **Challenges: extremely massive, unstructured and uncalibrated source of data**

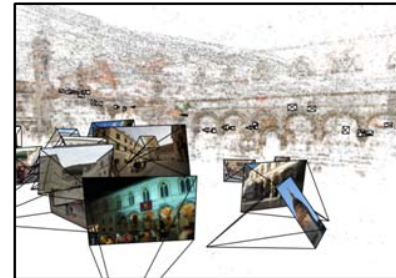
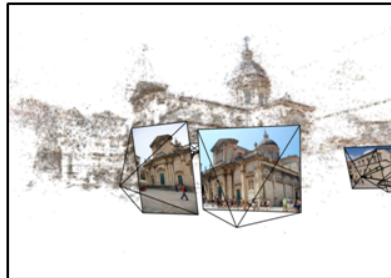
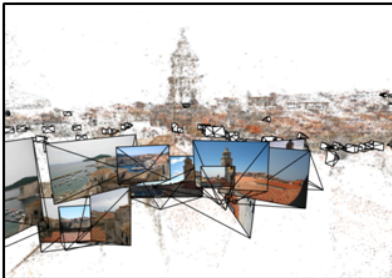


Large-Scale 3D Modeling



[ICCV 2009, ECCV 2010, CVPR 2011]

Localization from 3D Model Data



[ECCV 2010]



Click on a flag to add photos to an existing building, or learn about starting your own building

Cornell, Ithaca [change location](#)

[Recent Activity](#) [Standings](#)



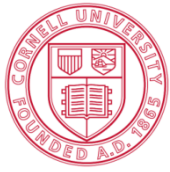
Cornell

| | | |
|--|--|---|
| | | curran scored 1399 points at Morrill hall 3 minutes ago |
| | | jolyon scored 2715 points at War Memorial 4 minutes ago |

Gathered over 40,000 photos of Cornell in less than three weeks, covering most of campus

Cornell's Flags

| | | | | |
|----|----|---------------|-----|----|
| 33 | 47 | 39 Uncaptured | 145 | 83 |
|----|----|---------------|-----|----|



Contact Information

- Prof. Noah Snavely, Cornell University
email: snavely@cs.cornell.edu
phone: 607-255-4280
www: <http://www.cs.cornell.edu/~snavely>