



INTERNATIONAL
COMPUTER SCIENCE
INSTITUTE

The Berkeley Multimodal Location Estimation Project



Dr. Gerald Friedland
International Computer Science Institute
Berkeley, CA
fractor@icsi.berkeley.edu

Localizing Mobile Video into Aerial Data

Frame 1

Frame 2

Frame 3



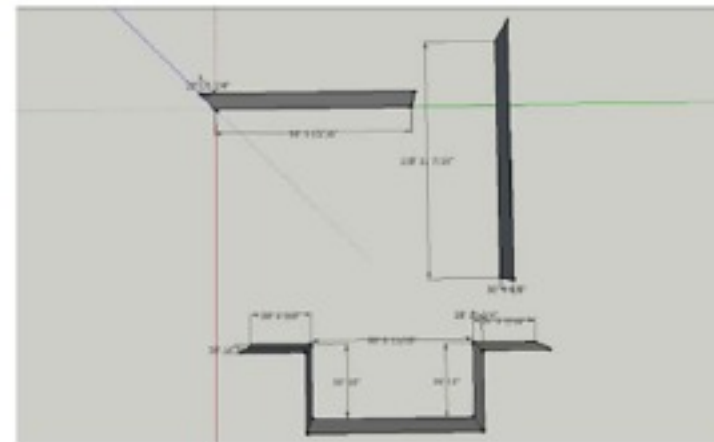
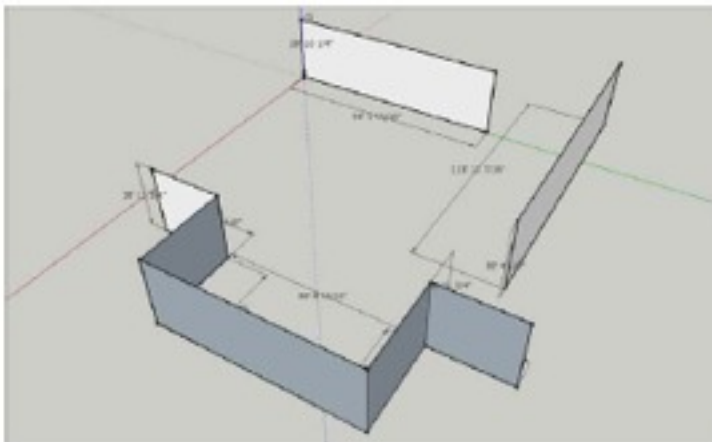
Template



Building Space Map

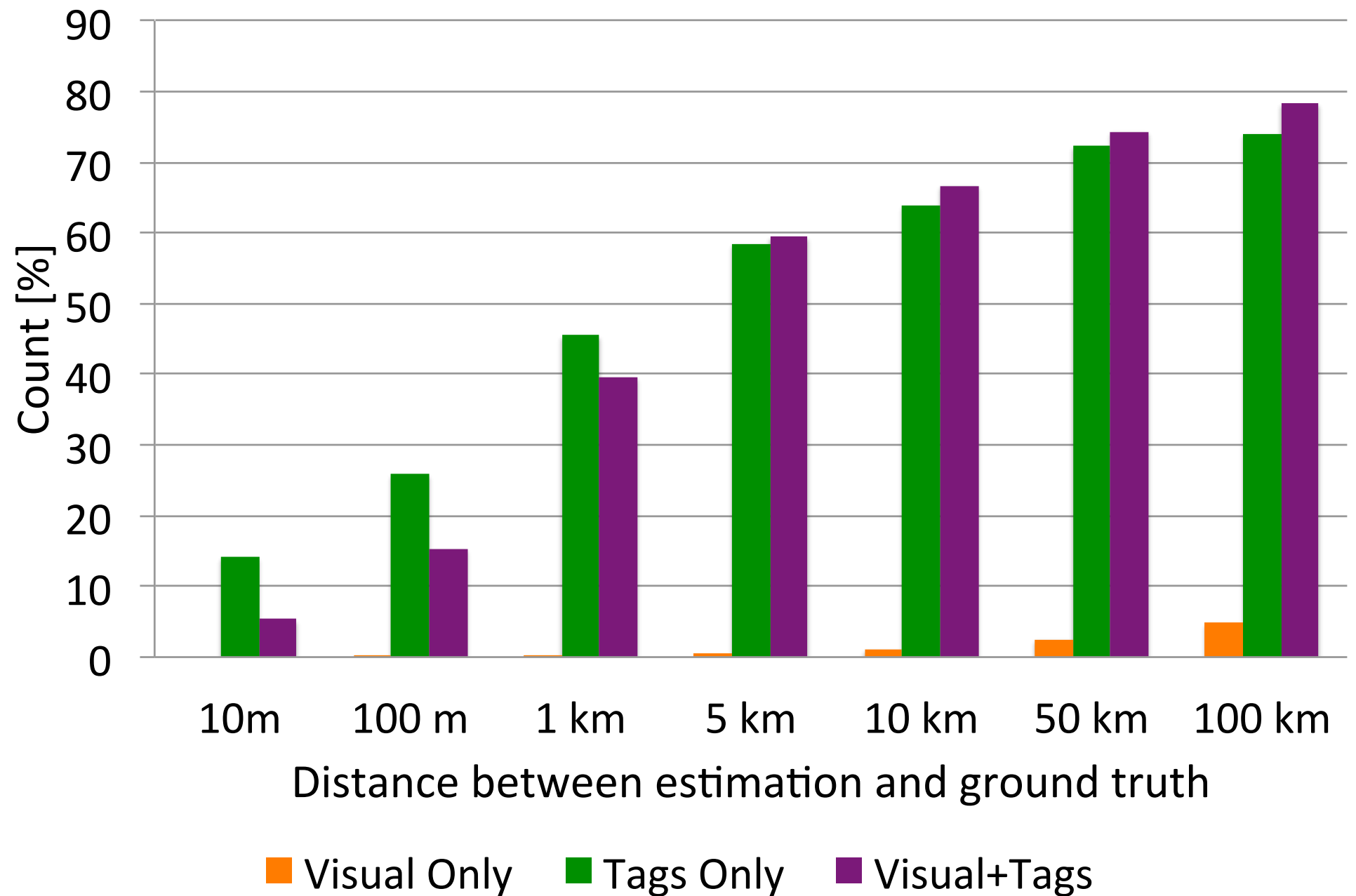


- Specify building facades using interactive 3D modeling tool (e.g., Google Sketchup)



- Convert to overhead model for *open-space* search:

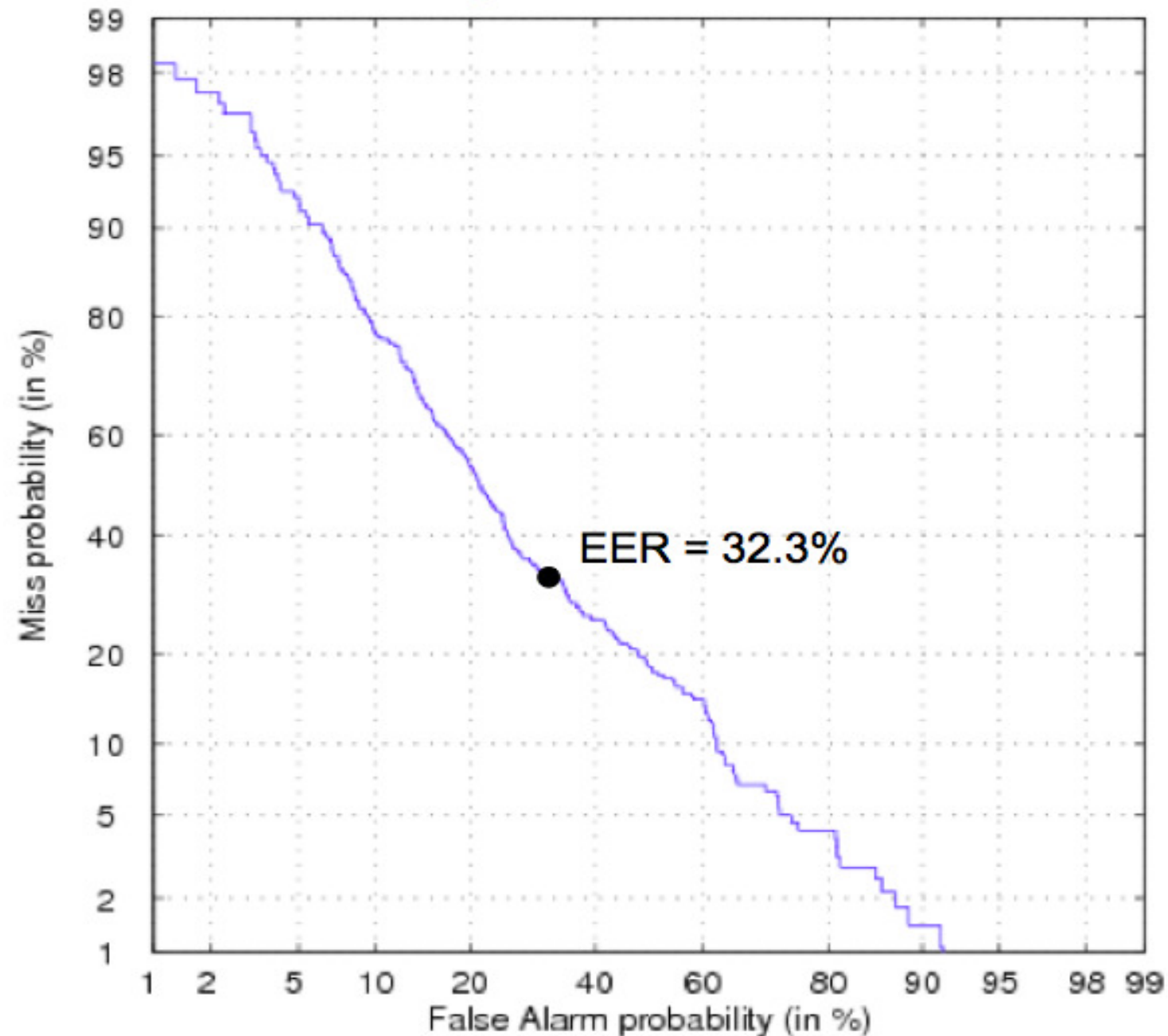




G. Friedland, J. Choi, A. Janin: "Multimodal Location Estimation on Flickr Videos," submitted to ACM Multimedia 2011.

Audio helps too!

DET curve for city identification with 1,080-video training set and 285-video test set



H. Lei, J. Choi, G. Friedland: "City-Identification on Flickr Videos Using Acoustic Features", ICSI Technical Report TR-11-001, submitted to ACM Multimedia 2011.



Interested?

Contact:

Gerald Friedland
International Computer Science Institute
Berkeley, CA
fractor@icsi.berkeley.edu



Work Together with:

Trevor Darrell (EECS, UC Berkeley)
trevor@eecs.berkeley.edu

More information:

<http://mmle.icsi.berkeley.edu>