

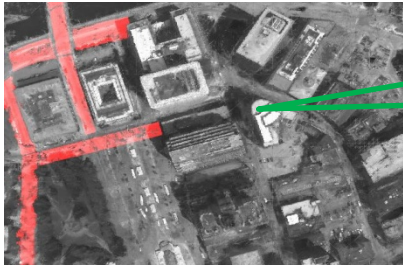


- Computer Vision Group Inc.
 - computer vision R&D start-up located in providence, RI.
- Lead Investigator : Dr. Joseph L. Mundy
- Current Team Members
 - Andrew Miller, Sc.M.
 - Ozge Can Ozcanli, Ph.D.
 - Jim Green, Ph.D.
 - Vishal Jain, Ph.D.



Develop high-fidelity and efficient computer vision technologies based on 3-d reasoning to augment analysis capabilities for ISR activities.

Visibility/Occlusion estimation



Enemy's Vantage point

Red color shows region of interest such as roads.



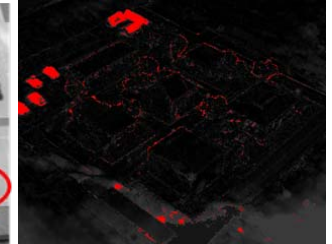
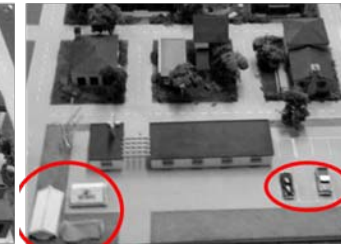
Enemy's Vantage point

Green color shows VISIBLE region of interest from enemy's vantage point.

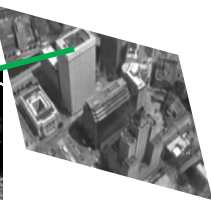
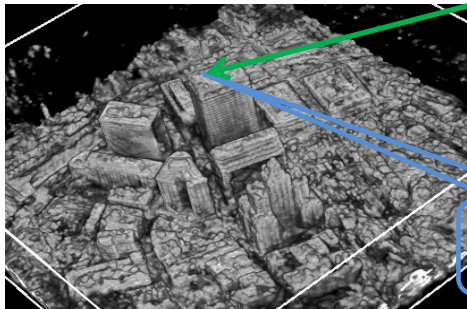
Short-term Change Detection (shown in Red)



Long-term Change Detection (shown in Red)



Geo-positioning



Geo-coordinates (Long=?,lat=?, ele=?)

Export Visualization of 3-d terrain

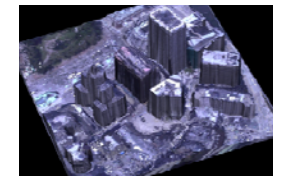
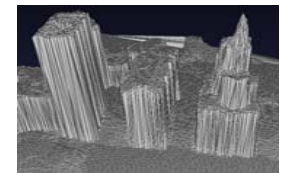
Real-time Volumetric Rendering on GPUs.



Web-browser based visualization

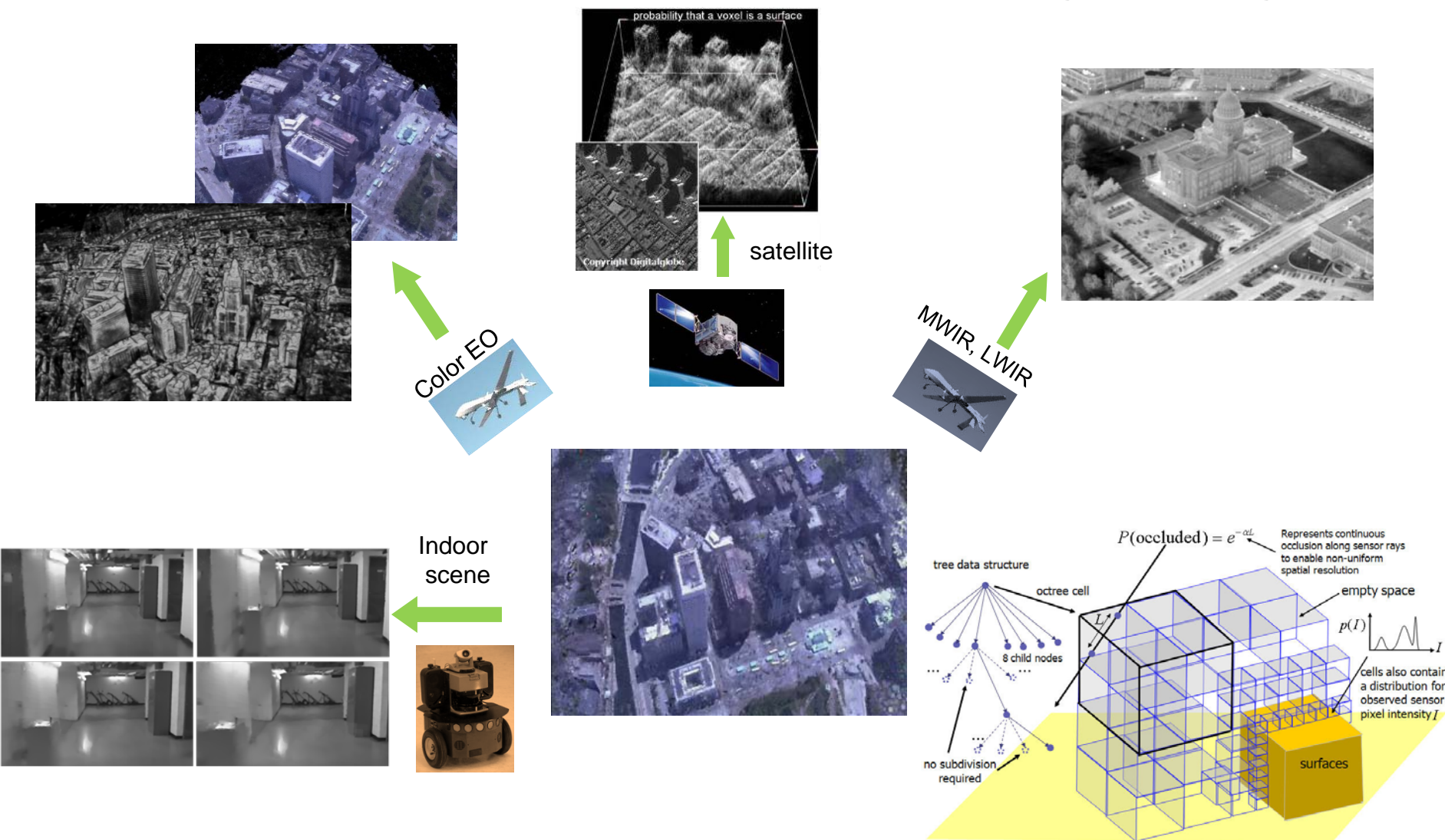


3-d textured mapped mesh





Core Technology: Probabilistic Volumetric Representation (PVR) Automatic and Real-time Dense 3-d Modeling from Images





- Specific capabilities your group is seeking
 - SLAM systems
 - Approximate sensor estimation for indoor scenes for building 3-d models.
 - Object Recognition
 - Narrow down search of areas to be indexed for geo-location.



Contact Information

- Vishal Jain
- Chief Computer Vision Scientist
- Computer Vision Group Inc.
- vj@computervisiongroup.com
- 401-427-0860
- www.computervisiongroup.com