

- **Least Squares Software, Inc.**
- Principle Investigator
William N. Reynolds, Ph. D.
- Team
 - Dr. Marta Weber – SME: Sociology, Psychology, Behavioral Profiling
 - Dr. Jim Holden-Rhodes – SME: Intelligence Analysis, Political Science, Open Source Intelligence, IW/COIN

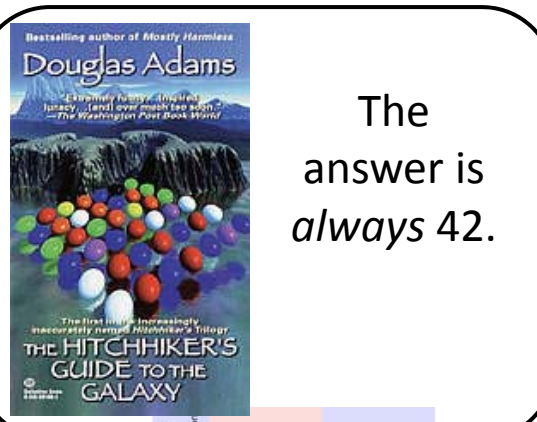
Least Squares

What makes an AM/SAT effective?

- Core Expertise: Analytic Methodology/Structured Analytic Techniques
- Approaches to structure human judgment.
 - Designed to mitigate problems with human reasoning
 - Cognitive Biases
 - Limited Working Memory

Hidden Program	None Exists	Hidden Program		Leadership Mix		Hidden Pathway Financing		Overt Pathway Financing	
		None	Exists	Overt Only	Hidden (Overt as Cover)	High	Low	None	High/Low
Hidden Program	None Exists								
Leadership Mix	Overt Only		X						
	Both	X							
Hidden Pathway Financing	Overt as Cover	X							
	High	X		X					
	Low	X		X					
Overt Pathway Financing	None		X		X	X			
	High								
Overt Pathway Financing	Low								

Morphine: Morphological Analysis

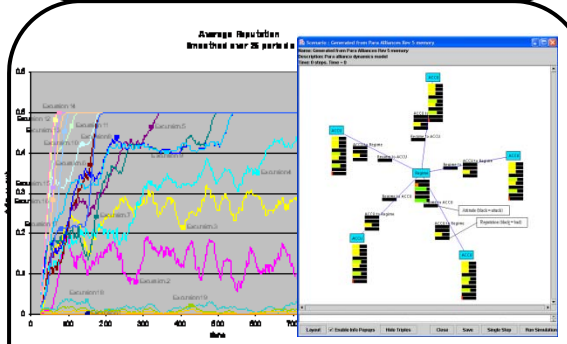


The answer is always 42.

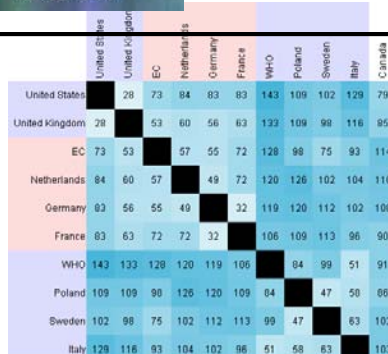
Evidence	H1	H2
1. Structure orientation	+	-
2. Structure dimensions	+	-
3. Military threat perception	-	+
4. Communication deficit	+	-
5. Political leverage of Kafiri military	-	+
6. Adami-Kafiri border	-	+
7. Defector reports on Hula-Hoop radar	0	+

Hypotheses	Findings
1. H.H. a communications structure	1. Hula Hoop a radar installation
2. H.H. a missile guidance structure	2. Hula Hoop a communication tower

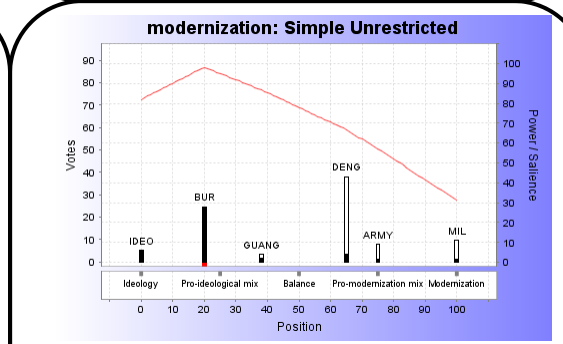
Analysis of Competing Hypotheses



Policrash: Depth Simulation

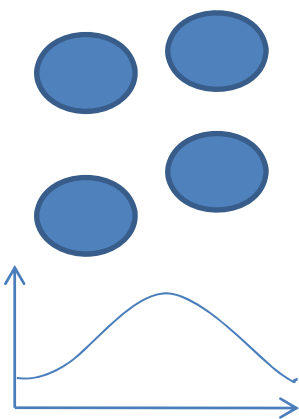


Landscape-Decision: Coalition Analysis

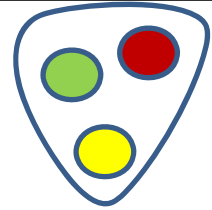


Landscape-Decision: Decision Modeling

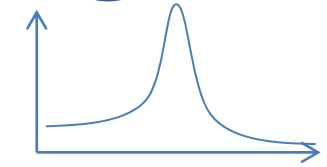
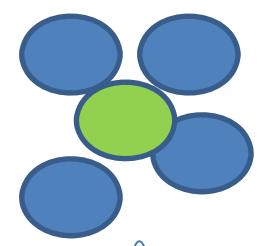
Breadth-Depth: Hypothesized Cost- Benefit Framework for SATs



Pool of Potential Reasoning Elements

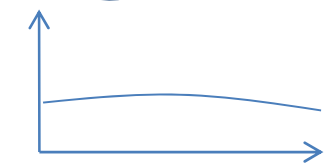
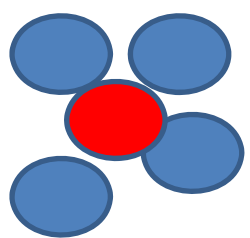


Add high-value reasoning element



Low Uncertainty Argument

Add low-value reasoning element



Higher Uncertainty Argument

Analytic Cost

SAT Complexity

Recommended Approach:

Low Complexity methods To ***Triage*** High-Complexity methods

- **Desired Collaborations:**
 - LSS would like to work with other performers interested in researching, developing and delivering forecasting methodologies and tools.
- **LSS' Value Propositions**
 - Work with our and/or other performers' tools/methods to develop Breadth-Depth approach, conduct experiments.
 - Support others through validation of techniques through triangulation, in particular using efficient, coarse-grained models that capture expert knowledge (Morphological Analysis/Morphine/Causal Inference Theory).
 - Track record of developing CONOPS for methods and tools for real-world deployment.
 - Support case studies with SME, Analytical, Complexity and Software Expertise.
- **LSS Specific SATs**
 - **Landscape-Decision** – Coalition and Small Group Decision Analysis, deployed at two agencies.
 - **Morphine** – Tool for conducting Morphological Analysis. Structured, highly efficient capture of SME knowledge for validating other approaches. Basis for designing statistical tests based on Causal Inference Theory.



Contact Information

William Reynolds, Ph.D.

President

Least Squares Software, Inc.

12231 Academy Rd. NE #301-192

Albuquerque, NM 87111

Email: bill@leastquares.com

(505) 266-6199 (office)

(505)259-3701 (cell)

<http://www.leastquares.com>