

DRAFT

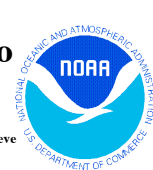
ANTIPATHARIANS

of Deepwater Communities in the Northwestern Gulf of Mexico

Developed by Flower Garden Banks National Marine Sanctuary
Emma L. Hickerson and G.P. Schmahl

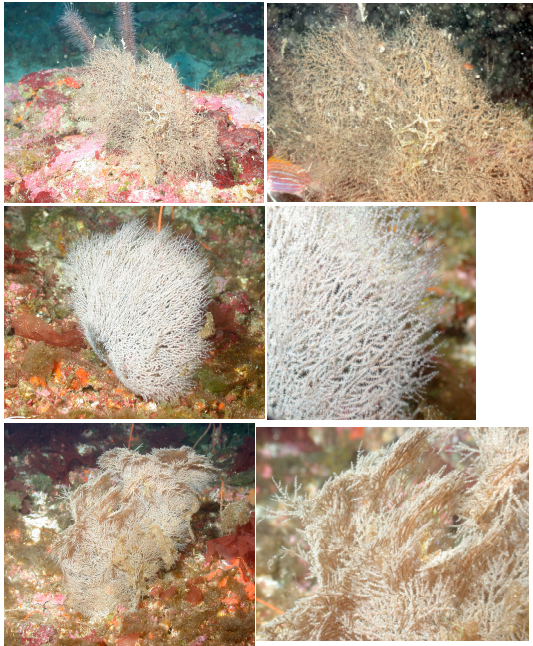
Collaborators: Dennis Opresko (Smithsonian Institute), Mary Wicksten (Texas A&M University), Kyle Byers and Douglas C. Weaver (NOAA/FGBNMS), Steve Cairns (Smithsonian Institute), Lance Horn, (National Undersea Research Center/University of North Carolina at Wilmington)

February, 2007

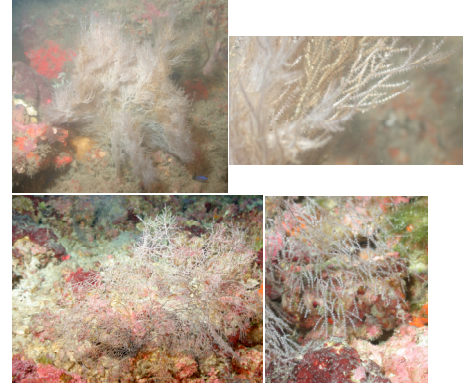


Phylum Cnidaria
Class Anthozoa
Order Antipatharia
Family Antipathidae

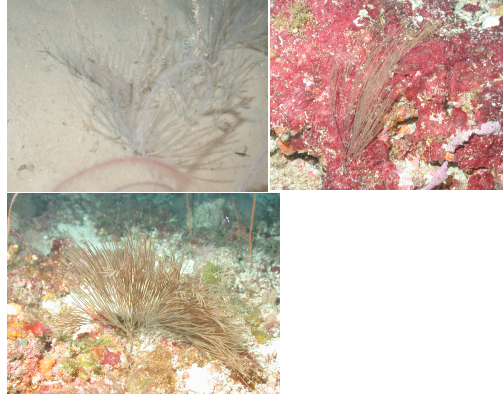
Antipathes atlantica



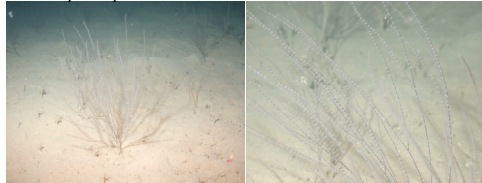
Possible ecological variant of *A. atlantica*



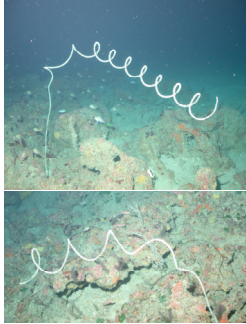
Antipathes furcata



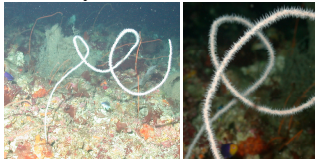
Antipathes sp.



Stichopathes sp.

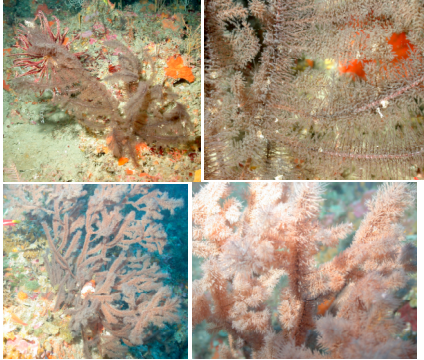


Stichopathes lutkeni



Family Myriopathidae

Tanacetipathes sp.



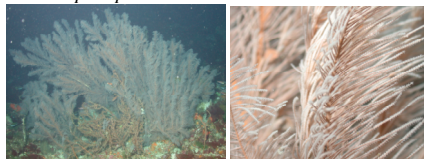
Tanacetipathes barbadensis



Tanacetipathes tanacetum

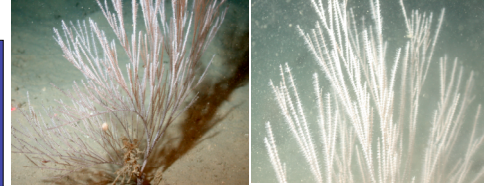


Plumapathes pennacea



Family Aphanipathidae

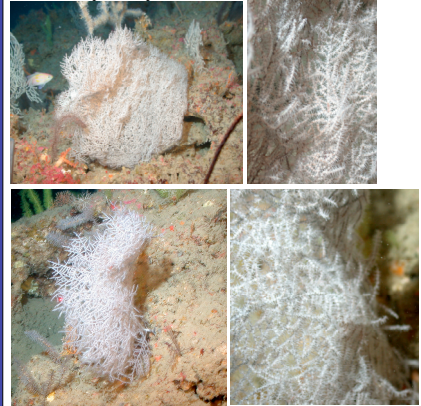
Aphanipathes pedata



Elatopathes abietina



Phanopathes expansa



Acanthopathes thyoidea



The majority of the antipatharians pictured were sampled at the Flower Garden Banks National Marine Sanctuary by remotely operated vehicle at depths between 158 feet and 431 feet.