

**APPROVED JURISDICTIONAL DETERMINATION FORM**  
**U.S. Army Corps of Engineers**

This form should be completed by following the instructions provided in Section IV of the JD Form Instructional Guidebook.

**SECTION I: BACKGROUND INFORMATION**

**I.A. REPORT COMPLETION DATE FOR APPROVED JURISDICTIONAL DETERMINATION (JD):** **Final 4 October, 2012**

**I.B. DISTRICT OFFICE, FILE NAME, AND NUMBER:** **Omaha District, NWO, 2012-00086-WEH, Bruning Wastewater Treatment Facilities.**

**I.C. PROJECT LOCATION AND BACKGROUND INFORMATION:**

State: **NE** County/parish/borough: **Thayer** City: **Rural**  
Center coordinates of site (lat/long in degree decimal format): Project Location - Lat. **40.327965°**  
Long. **-97.561311° WGS 1984** Universal Transverse Mercator: [ ] 13, [ ] 14, [ ] 15

Sites approximately: **WGS 1984**

**Site 1 – Isolated wetland 40.327965°, -97.561311° NE1/4 of SE1/4 in Section 8, Township 4 North, Range 2 West, Thayer County, Nebraska**

Name of nearest water body: **un-named tributary to Big Sandy Creek, reach code 10270206 000849**  
Name of nearest Traditional Navigable Water (TNW) into which the aquatic resource flows: **NA, Isolated.**  
Name of watershed or Hydrologic Unit Code (HUC): **10270206 Upper Little Blue**  
[ **X** ] Check if map/diagram of review area and/or potential jurisdictional areas is/are available upon request. **Attached.**  
[ ] Check if other sites (e.g., offsite mitigation sites, disposal sites, etc...) are associated with this action and are recorded on a different JD form.

**I.D. REVIEW PERFORMED FOR SITE EVALUATION (CHECK ALL THAT APPLY):**

[ **X** ] Office (Desk) Determination. Date: **5 September 2012**  
[ ] Field Determination. Date(s): **\_\_\_**

**SECTION II: SUMMARY OF FINDINGS**

**II.A. RHA SECTION 10 DETERMINATION OF JURISDICTION.**

There [ **X** ] **Are No** OR [ ] **Are** OR [ ] **Are and Are Not** OR [ ] **Appear to be No** OR [ ] **Appear to be** OR [ ] **Appear to be and Appear Not to be** **“navigable waters of the U.S.” within Rivers and Harbors Act (RHA) jurisdiction** (as defined by 33 CFR part 329) in the review area. [Required]

[ ] Waters subject to the ebb and flow of the tide.  
[ ] Waters are presently used, or have been used in the past, or may be susceptible for use to transport interstate or foreign commerce. Explain: **xx.**

**II.B. CWA SECTION 404 DETERMINATION OF JURISDICTION.**

There [ **X** ] **ARE NO** OR [ ] **ARE** OR [ ] **Are and Are Not** **“waters of the U.S.” within Clean Water Act (CWA) jurisdiction** (as defined by 33 CFR part 328) in the review area. [Required]

**II.B.1. Waters of the U.S.**

**a. Indicate presence of waters of U.S. in review area (check all that apply):<sup>1</sup>**

- TNWs, including territorial seas;
- Wetlands adjacent to TNWs;
- Relatively permanent waters<sup>2</sup> (RPWs) that flow directly or indirectly into TNWs [III.B.1]
- Non-RPWs that flow directly or indirectly into TNWs
- Wetlands directly abutting RPWs that flow directly or indirectly into TNWs [III.B.2]
- Wetlands adjacent to but not directly abutting RPWs that flow directly or indirectly into TNWs
- Wetlands adjacent to non-RPWs that flow directly or indirectly into TNWs
- Impoundments of jurisdictional waters
- Isolated (interstate or intrastate) waters, including isolated wetlands

**b. Identify (estimate) size of waters of the U.S. in the review area:**

Non-wetland waters: **(average at each site reviewed) 00** linear feet: **0-0** width (ft) and/or **00** acres.  
Wetlands:     .

- c. Limits (boundaries) of jurisdiction** based on:  Not Applicable;  1987 Delineation Manual;  Established by OHWM;  Established by Outer Continental Shelf limits;  Sea-ward limit of the territorial seas;  within 3-mile baseline;  Established by mean (average) high waters;  Established by Corps navigation study;  Not established at this time. Elevation of established OHWM (if known): **00**.

**II.B.2. Non-regulated waters/wetlands (check if applicable):<sup>3</sup>**

Potentially jurisdictional waters and/or wetlands were assessed within the review area and determined to be not jurisdictional. Explain: **This JD review area consists of a wastewater sewage lagoon with adjacent wetland approximately 0.03-acre in size. The wetland has resulted from the saturated conditions created by the lagoon cell structure. The wetlands are located in a depressed confined area with only limited seasonal discharge flows, when storm water pools and overflows the depressed area. Overland flows terminate in uplands and lack a defined hydrologic surface connection to any potential WOUS.**

**No interstate commerce is present because of the lack of public access to the public infrastructure facility. There is not any evidence to show that this wetland 1) is or could be used by interstate or foreign travelers for recreational or other purposes, 2) produces fish or shellfish which are or could be taken and sold in interstate or foreign commerce, or 3) is or could be used for industrial purposes by industries in interstate commerce.**

**Based upon these principle considerations, it is determined that the subject wetland is isolated and non-jurisdictional under the auspices of Section 404 of the Clean Water Act.**

**SECTION III: CWA ANALYSIS**

**III.A. TNWs AND WETLANDS ADJACENT TO TNWs**

**The agencies will assert jurisdiction over TNWs and wetlands adjacent to TNWs. If the aquatic resource is a TNW, complete Section III.A.1 and Section III.D.1. only; if the aquatic resource is a wetland adjacent to a TNW, complete Sections III.A.1 and 2 and Section III.D.1.; otherwise, see Section III.B below.**

**III.A.1. TNW**

Identify TNW: **NA.**

<sup>1</sup> Boxes checked below shall be supported by completing the appropriate sections in Section III below.

<sup>2</sup> For purposes of this form, an RPW is defined as a tributary that is not a TNW and that typically flows year-round or has continuous flow at least "seasonally" (e.g., typically 3 months).

<sup>3</sup> Supporting documentation is presented in Section III.F.

Summarize rationale supporting determination: **NA**.

### **III.A.2. Wetland adjacent to TNW**

Summarize rationale supporting conclusion that wetland is “adjacent”: **NA**.

## **III.B. CHARACTERISTICS OF TRIBUTARY (THAT IS NOT A TNW) AND ITS ADJACENT WETLANDS (IF ANY):**

This section summarizes information regarding characteristics of the tributary and its adjacent wetlands, if any, and it helps determine whether or whether not the standards for jurisdiction established under *Rapanos* have been met.

The agencies will assert jurisdiction over non-navigable tributaries of TNWs where the tributaries are “relatively permanent waters” (RPWs), i.e. tributaries that typically flow year-round or have continuous flow at least seasonally (e.g., typically 3 months). A wetland that directly abuts an RPW is also jurisdictional. If the aquatic resource is not a TNW, but has year-round (perennial) flow, skip to Section III.D.2. If the aquatic resource is a wetland directly abutting a tributary with perennial flow, skip to Section III.D.4.

A wetland that is adjacent to but that does not directly abut an RPW requires a significant nexus evaluation. Corps districts and EPA regions will include in the record any available information that documents the existence of a significant nexus between a relatively permanent tributary that is not perennial (and its adjacent wetlands if any) and a traditional navigable water, even though a significant nexus finding is not required as a matter of law.

If the waterbody<sup>4</sup> is not an RPW, or a wetland directly abutting an RPW, a JD will require additional data to determine if the waterbody has a significant nexus with a TNW. If the tributary has adjacent wetlands, the significant nexus evaluation must consider the tributary in combination with all of its adjacent wetlands. This significant nexus evaluation that combines, for analytical purposes, the tributary and all of its adjacent wetlands is used whether the review area identified in the JD request is the tributary, or its adjacent wetlands, or both. If the JD covers a tributary with adjacent wetlands, complete Section III.B.1 for the tributary, Section III.B.2 for any onsite wetlands, and Section III.B.3 for all wetlands adjacent to that tributary, both onsite and offsite. The determination whether a significant nexus exists is determined in Section III.C below.

### **III.B.1. Characteristics of non-TNWs that flow directly or indirectly into TNW**

#### **B.1.(i) General Area Conditions:**

Watershed size: **0** acres / ~~sq. miles~~ \_\_\_

Drainage area: **0** acres / ~~sq. miles~~ \_\_\_

Average annual rainfall: **00**-inches

Average annual snowfall: **00**-inches

#### **III.B.1.(ii) Physical Characteristics:**

##### **B.1.(ii)(a) Relationship with TNW:**

Tributary flows directly into TNW.

Tributary flows through [~~1, 2, 3, or 10~~] tributaries before entering TNW.

Project waters are [**0-0**] river miles from TNW.

Project waters are [~~1 or less, 1-2, 2-5, 5-10...~~] river miles from RPW.

---

<sup>4</sup> Note that the Instructional Guidebook contains additional information regarding swales, ditches, washes, and erosional features generally and in the arid West.



- vegetation matted down, bent, or absent       sediment sorting
- leaf litter disturbed or washed away       scour
- sediment deposition       multiple observed or predicted flow events
- water staining       abrupt change in plant community
- other (list):
- Discontinuous OHWM.<sup>7</sup> Explain: **NA.**

If factors other than the OHWM were used to determine lateral extent of CWA jurisdiction (check all that apply):

- High Tide Line indicated by:       Mean High Water Mark indicated by:
- oil or scum line along shore objects       survey to available datum;
- fine shell or debris deposits (foreshore)       physical markings;
- physical markings/characteristics       vegetation lines/changes in vegetation types.
- tidal gauges
- other (list):

**III.B.1.(iii) Chemical Characteristics:**

Characterize tributary (e.g., water color is clear, discolored, oily film; water quality; general watershed characteristics, etc.). Explain:           .

Identify specific pollutants, if known:           .

**III.B.1.(iv) Biological Characteristics. Channel supports (check all that apply):**

- Riparian corridor. Characteristics (type, average width):           .
- Wetland fringe. Characteristics:           .
- Habitat for:           .
- Federally Listed species. Explain findings:           .
- Fish/spawn areas. Explain findings:
- Other environmentally-sensitive species. Explain findings:           .
- Aquatic / wildlife diversity. Explain findings:           .

**III.B.2. Characteristics of wetlands adjacent to non-TNW that flow directly or indirectly into TNW**

**(i) Physical Characteristics:**

**(a) General Wetland Characteristics:**

Properties:           .

Wetland size: **varies - 0.00** acres

Wetland type. Explain:           .

Wetland quality. Explain:           .

Project wetlands cross or serve as state boundaries. Explain: **NA.**

**(b) General Flow Relationship with Non-TNW:**

Flow is:  Intermittent,  Ephemeral,  Perennial,  No Flow. Explain:           .

Surface flow is:  Discrete;  Confined;  Discrete & Confined;  Overland Sheetflow.  Not Present. Explain findings:           .

Subsurface flow:  Yes;  No;  Unknown. Explain findings:           .

Dye (or other) test performed:           .

**(c) Wetland Adjacency Determination with Non-TNW:**

Directly abutting

<sup>7</sup>Ibid.

- Not directly abutting
  - Discrete wetland hydrologic connection. Explain: \_\_.
  - Ecological connection. Explain: \_\_.
  - Separated by berm/barrier. Explain: \_\_.

(d) Proximity (Relationship) to TNW

Project wetlands are [~~1 or less, 1-2, 2-5, 5-10...~~**20-25**] river miles from TNW.  
 Project waters are [~~1 or less, 1-2, 2-5, 5-10...~~**20**] aerial (straight) miles from TNW.

Flow is from:  Wetlands to navigable waters;  Navigable waters to wetlands;  Wetland to / from navigable waters;  No Flow

Estimate approximate location of wetland as within the  2-yr or less;  2-5-yr;  00-00-yr;  100-500-yr. floodplain.

**III.B.2. (ii) Chemical Characteristics:**

Characterize wetland system (e.g., water color is clear, brown, oil film on surface; water quality; general watershed characteristics; etc.). Explain: \_\_.

Identify specific pollutants, if known: \_\_.

**III.B.2. (iii) Biological Characteristics. Wetland supports (check all that apply):**

- Riparian corridor. Characteristics (type, average width): \_\_.
- Wetland fringe. Characteristics: \_\_.
- Habitat for: \_\_.
  - Federally Listed species. Explain findings: \_\_.
  - Fish/spawn areas. Explain findings: \_\_
  - Other environmentally-sensitive species. Explain findings: \_\_.
  - Aquatic / wildlife diversity. Explain findings: \_\_.

**III.B.3. Characteristics of all wetlands adjacent to the tributary (if any)**

All wetland(s) being considered in the cumulative analysis: \_\_  
 Approximately ( **0.00** ) acres in total are being considered in the cumulative analysis.

For each wetland, specify the following:

Directly abuts?	(Y/N)	Size (in acres)	Directly abuts?	(Y/N)	Size (in acres)

Summarize overall biological, chemical and physical functions being performed: \_\_.

**III.C. SIGNIFICANT NEXUS DETERMINATION**

**A significant nexus analysis will assess the flow characteristics and functions of the tributary itself and the functions performed by any wetlands adjacent to the tributary to determine if they significantly affect the chemical, physical, and biological integrity of a TNW. For each of the following situations, a significant nexus exists if the tributary, in combination with all of its adjacent wetlands, has more than a speculative or insubstantial effect on the chemical, physical and/or biological integrity of a TNW. Considerations when evaluating significant nexus include, but are not**

limited to the volume, duration, and frequency of the flow of water in the tributary and its proximity to a TNW, and the functions performed by the tributary and all its adjacent wetlands. It is not appropriate to determine significant nexus based solely on any specific threshold of distance (e.g. between a tributary and its adjacent wetland or between a tributary and the TNW). Similarly, the fact an adjacent wetland lies within or outside of a floodplain is not solely determinative of significant nexus.

Draw connections between the features documented and the effects on the TNW, as identified in the *Rapanos* Guidance and discussed in the Instructional Guidebook. Factors to consider include, for example:

- Does the tributary, in combination with its adjacent wetlands (if any), have the capacity to carry pollutants or flood waters to TNWs, or to reduce the amount of pollutants or flood waters reaching a TNW?
- Does the tributary, in combination with its adjacent wetlands (if any), provide habitat and lifecycle support functions for fish and other species, such as feeding, nesting, spawning, or rearing young for species that are present in the TNW?
- Does the tributary, in combination with its adjacent wetlands (if any), have the capacity to transfer nutrients and organic carbon that support downstream food-webs?
- Does the tributary, in combination with its adjacent wetlands (if any), have other relationships to the physical, chemical, or biological integrity of the TNW?

Note: the above list of considerations is not inclusive and other functions observed or known to occur should be documented below:

**III.C.1. Significant nexus findings for non-RPW that has no adjacent wetlands and flows directly or indirectly into TNWs.** Explain \_

**III.C.2. Significant nexus findings for non-RPW and its adjacent wetlands, where the non-RPW flows directly or indirectly into TNWs.** Explain findings of presence or absence of significant nexus below, based on the tributary in combination with all of its adjacent wetlands, then go to Section III.D: \_.

**III.C.3. Significant nexus findings for wetlands adjacent to an RPW but that do not directly abut the RPW.** Explain findings of presence or absence of significant nexus below, based on the tributary in combination with all of its adjacent wetlands, then go to Section III.D: \_.

**III.D. DETERMINATIONS OF JURISDICTIONAL FINDINGS. THE SUBJECT WATERS/WETLANDS ARE (CHECK ALL THAT APPLY):**

**III.D.1. TNWs and Adjacent Wetlands.** Check all that apply and provide size estimates in review area:  
[ ] TNWs: **00** linear feet **00** width (ft), Or, **00** acres.  
[ ] Wetlands adjacent to TNWs: **00** acres.

**III.D.2. RPWs that flow directly or indirectly into TNWs.**

[ ] Tributaries of TNWs where tributaries typically flow year-round are jurisdictional. Provide data and rationale indicating that tributary is perennial: \_.

[ ] Tributaries of TNW where tributaries have continuous flow “seasonally” (e.g., typically three months each year) are jurisdictional. Data supporting this conclusion is provided at Section III.B. Provide rationale indicating that tributary flows seasonally: \_.

Provide estimates for jurisdictional waters in the review area (check all that apply):



- Tributary waters: \_\_\_ linear feet **x to xx** width (ft).
  - Other non-wetland waters: **00** acres.
- Identify type(s) of waters: \_\_\_\_\_.

**III.D.3. Non-RPWs<sup>8</sup> that flow directly or indirectly into TNWs.**

- Waterbody that is not a TNW or an RPW, but flows directly or indirectly into a TNW, and it has a significant nexus with a TNW is jurisdictional. Data supporting this conclusion is provided at Section III.C.

Provide estimates for jurisdictional waters within the review area (check all that apply):

- Tributary waters: **00** linear feet **0-0** width (ft).
  - Other non-wetland waters: **00** acres.
- Identify type(s) of waters: \_\_\_.

**III.D.4. Wetlands directly abutting an RPW that flow directly or indirectly into TNWs.**

- Wetlands directly abut RPW and thus are jurisdictional as adjacent wetlands.

- Wetlands directly abutting an RPW where tributaries typically flow year-round. Provide data and rationale indicating that tributary is perennial in Section III.D.2, above. Provide rationale indicating that wetland is directly abutting an RPW: \_\_\_.

- Wetlands directly abutting an RPW where tributaries typically flow “seasonally.” Provide data indicating that tributary is seasonal in Section III.B and rationale in Section III.D.2, above. Provide rationale indicating that wetland is directly abutting an RPW:

Provide acreage estimates for jurisdictional wetlands in the review area: **approximately 0.0** acres.

**III.D.5. Wetlands adjacent to but not directly abutting an RPW that flow directly or indirectly into TNWs.**

- Wetlands that do not directly abut an RPW, but when considered in combination with the tributary to which they are adjacent and with similarly situated adjacent wetlands, have a significant nexus with a TNW are jurisdictional. Data supporting this conclusion is provided at Section III.C.

Provide acreage estimates for jurisdictional wetlands in the review area: **00** acres.

**III.D.6. Wetlands adjacent / abutting to non-RPWs that flow directly or indirectly into TNWs.**

- Wetlands adjacent to such waters, and have when considered in combination with the tributary to which they are adjacent and with similarly situated adjacent wetlands, have a significant nexus with a TNW are jurisdictional. Data supporting this conclusion is provided at Section III.C.

Provide estimates for jurisdictional wetlands in the review area: **0.00 -** acres.

**III.D.7. Impoundments of jurisdictional waters.<sup>9</sup>**

As a general rule, the impoundment of a jurisdictional tributary remains jurisdictional.

- Demonstrate that impoundment was created from “waters of the U.S.,” or
- Demonstrate that water meets the criteria for one of the categories presented above (1-6), or
- Demonstrate that water is isolated with a nexus to commerce (see E below).

**III.E. ISOLATED [INTERSTATE OR INTRA-STATE] WATERS, INCLUDING ISOLATED WETLANDS, THE USE, DEGRADATION OR DESTRUCTION OF WHICH COULD AFFECT**

---

<sup>8</sup>See Footnote # 3.

<sup>9</sup>To complete the analysis refer to the key in Section III.D.6 of the Instructional Guidebook.



**INTERSTATE COMMERCE, INCLUDING ANY SUCH WATERS (CHECK ALL THAT APPLY):<sup>10</sup>**

- which are or could be used by interstate or foreign travelers for recreational or other purposes.
- from which fish or shellfish are or could be taken and sold in interstate or foreign commerce.
- which are or could be used for industrial purposes by industries in interstate commerce.
- Interstate isolated waters. Explain: \_\_.
- Other factors. Explain: \_\_.

**Identify water body and summarize rationale supporting determination:**

Provide estimates for jurisdictional waters in the review area (check all that apply):

- Tributary waters: **00** linear feet **00** width (ft).
- Other non-wetland waters: **00** acres.  
Identify type(s) of waters: \_\_.
- Wetlands: **00** acres.

**III.F. NON-JURISDICTIONAL WATERS, INCLUDING WETLANDS (CHECK ALL THAT APPLY):**

- If potential wetlands were assessed within the review area, these areas did not meet the criteria in the 1987 Corps of Engineers Wetland Delineation Manual and / or appropriate Regional Supplements.
- Review area included isolated waters with no substantial nexus to interstate (or foreign) commerce.
  - Prior to the Jan 2001 Supreme Court decision in “SWANCC,” the review area would have been regulated based solely on the “Migratory Bird Rule” (MBR).
- Waters do not meet the “Significant Nexus” standard, where such a finding is required for jurisdiction.  
Explain: **No interstate commerce is present because of the lack of public access to the public infrastructure facility. There is not any evidence to show that this wetland 1) is or could be used by interstate or foreign travelers for recreational or other purposes, 2) produces fish or shellfish which are or could be taken and sold in interstate or foreign commerce, or 3) is or could be used for industrial purposes by industries in interstate commerce.**
- Other: (explain, if not covered above):

Provide acreage estimates for non-jurisdictional waters in the review area, where the sole potential basis of jurisdiction is the MBR factors (i.e., presence of migratory birds, presence of endangered species, use of water for irrigated agriculture), using best professional judgment (check all that apply):

- Non-wetland waters (i.e., rivers, streams): **00** linear feet **00** width (ft).
- Lakes/ponds: **0.0** acres.
- Other non-wetland waters: **00** acres. List type of aquatic resource: \_\_.
- Wetlands: **0.03-acre PEMA depressional wetland.**

Provide acreage estimates for non-jurisdictional waters in the review area that do not meet the “Significant Nexus” standard, where such a finding is required for jurisdiction (check all that apply):

- Non-wetland waters (i.e., rivers, streams): **00** linear feet, **00** width (ft).
- Lakes/ponds: **00** acres.
- Other non-wetland waters: **00** acres. List type of aquatic resource: xx.
- Wetlands: **0.03-acre PEMA depressional wetland.**

**SECTION IV: DATA SOURCES.**

---

<sup>10</sup> Prior to asserting or declining CWA jurisdiction based solely on this category, Corps Districts will elevate the action to Corps and EPA HQ for review consistent with the process described in the Corps/EPA Memorandum Regarding CWA Act Jurisdiction Following Rapanos.

**A. SUPPORTING DATA. Data reviewed for JD (check all that apply - checked items shall be included in case file and, where checked and requested, appropriately reference sources below):**

- Maps, plans, plots or plat submitted by or on behalf of the applicant/consultant: \_\_\_.
- Data sheets prepared/submitted by or on behalf of the applicant/consultant.
  - Office concurs with data sheets/delineation report. **\_Consultant wetland determination\_.**
  - Office does not concur with data sheets/delineation report.
- Data sheets prepared by the Corps: \_\_\_.
- Corps navigable waters' study: \_\_\_.
- U.S. Geological Survey Hydrologic Atlas: **ArcGIS: Map Service.**
  - USGS NHD data. **08/2012 NHDH\_NE\_931v210** <ftp://nhdftp.usgs.gov/Datasets/Staged/states/fileGDB/Highresolution/>
  - USGS 8 and 12 digit HUC maps. **Server: <http://maps.dnr.ne.gov/arcgis/services> Name: **SingleLayers/huc12****
- U.S. Geological Survey map(s). Cite scale & quad name: **Server: <http://maps.dnr.ne.gov/arcgis/services>, Name: **SingleLayers/DRG; WMS Server: [http://raster.nationalmap.gov/ArcGIS/services/DRG/TNM\\_Digital\\_Raster\\_Graphics/MapServer/wmsserver?](http://raster.nationalmap.gov/ArcGIS/services/DRG/TNM_Digital_Raster_Graphics/MapServer/wmsserver?) Service Name: **TNM\_Digital\_Raster\_Graphics******
- USDA Natural Resources Conservation Service Soil Survey. Citation: **ArcGIS: Soil Map Service <http://sdmdataaccess.nrcs.usda.gov/Spatial/SDM.wms?VERSION=1.1.1&> service name: **NRCS Soil Data Mart Data Access Web Map Service 3825 Non Hydric****
- National wetlands inventory map(s). Cite name: **ArcGIS: [http://137.227.242.85/ArcGIS/services/FWS\\_Wetlands\\_GE/MapServer/](http://137.227.242.85/ArcGIS/services/FWS_Wetlands_GE/MapServer/) service name: **FWS\_Wetlands\_WMS and USACE Corporate GIS dataset****
- State/Local wetland inventory map(s): \_\_\_.
- FEMA/FIRM maps: \_\_\_.
- 100-year Floodplain Elevation is: **00** (National Geodetic {Vertical Datum of 1929})
- Photographs: **Consultant provided in Wetland delineation report.**
- Aerial (Name & Date): **Server: <http://maps.dnr.ne.gov/arcgis/services> Name: **SingleLayers/2010Imagery [1993, 1999, 2003, 2006, FSA\_09]****  
**[http://isse.cr.usgs.gov/arcgis/services/Combined\\_USGS\\_EDC\\_Ortho\\_NAIP/MapServer/WMServer?](http://isse.cr.usgs.gov/arcgis/services/Combined_USGS_EDC_Ortho_NAIP/MapServer/WMServer?) service name: **Combined\_USGS\_EDC\_Ortho\_NAIP and Google Earth Pro historic aerials.****  
OR  Other (Name & Date): \_\_\_.
- Previous determination(s). File no. and date of response letter: \_\_\_
- Applicable/supporting case law: \_\_\_.
- Applicable/supporting scientific literature: \_\_\_.
- Other information (please specify): \_\_\_.

**B. ADDITIONAL COMMENTS TO SUPPORT JD:**





Day Study Creek

11UG12-  
10270200776

ONWO-1995-50188 #1

QNWO-1979-50009 #1

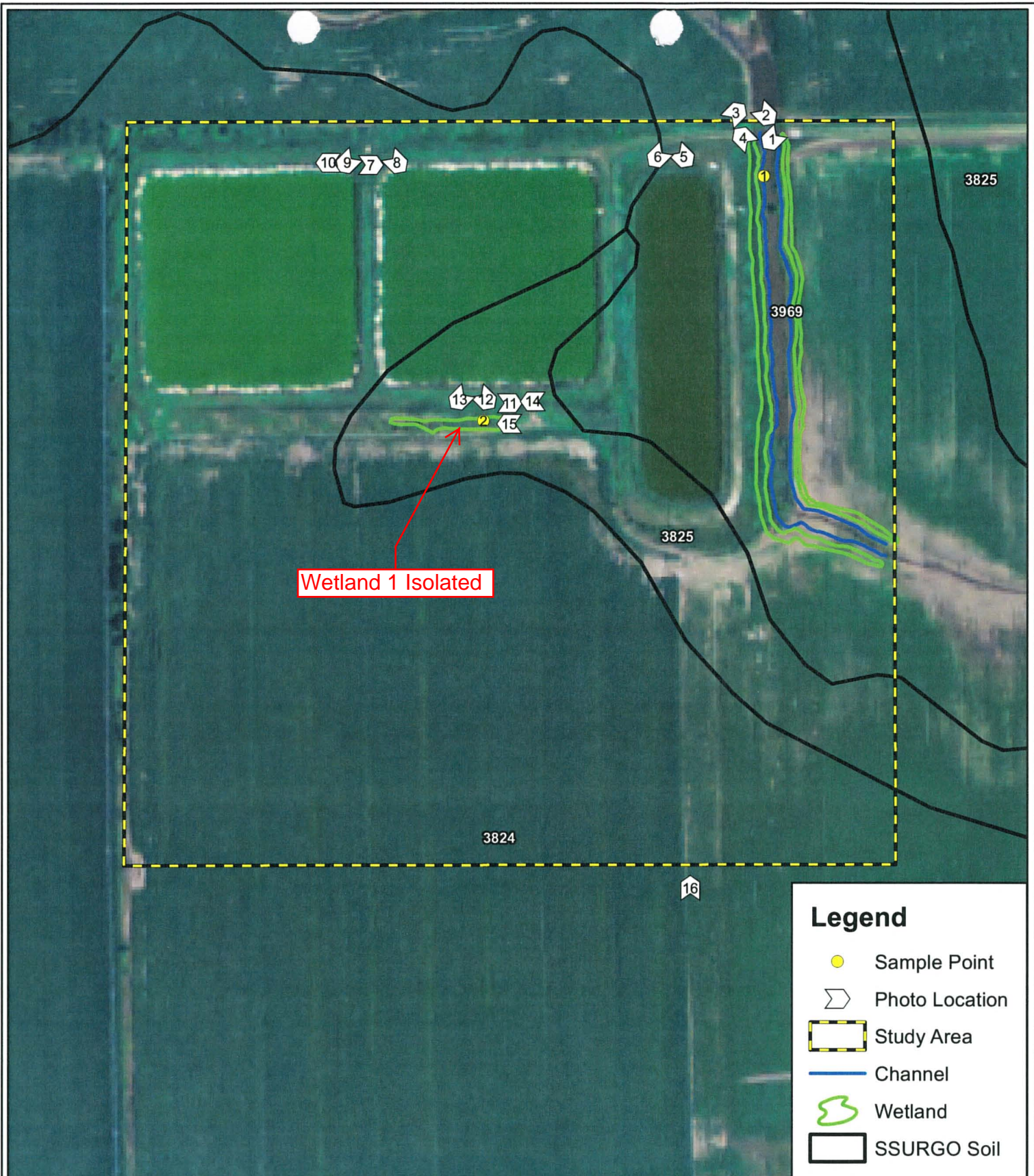
NWO-2012-00086

2012-00086\_Site1 Iso

11UG12-  
10270200776

NWO-1990-50118 #2





Data Source: 2010 NAIP Aerial Photograph, Thayer County

