



2005 Water Year MONTOUR RUN BASIN

03085956 Montour Run at Scott Station near Imperial, PA

Latitude: 40° 27 ' 23"

Longitude: 080° 10 ' 34"

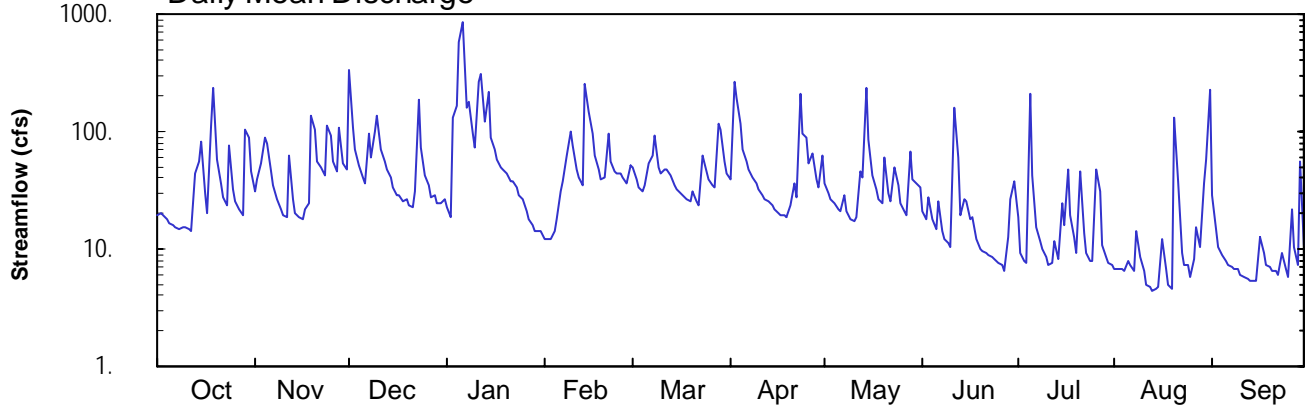
Hydrologic Unit Code: 05030101

Allegheny County

Datum: 850 feet

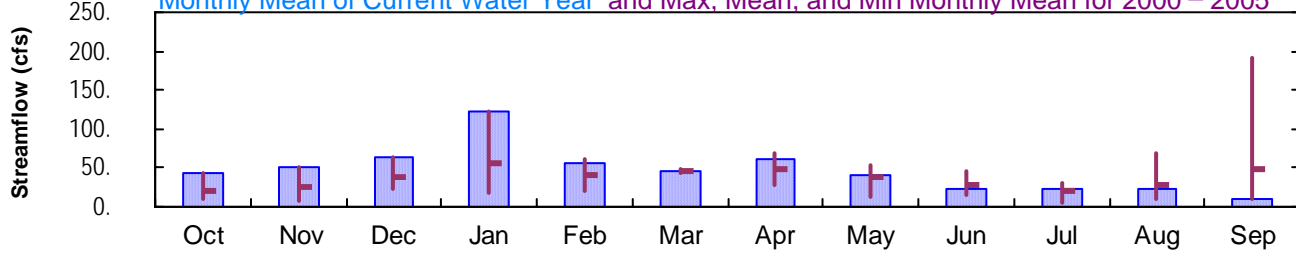
Drainage Area: 25.4 mi²

Daily Mean Discharge

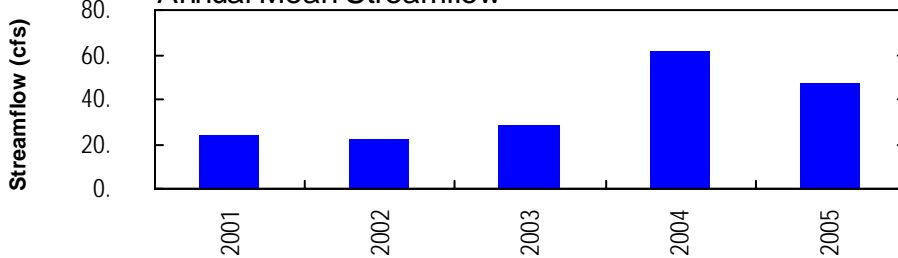


Monthly Statistics

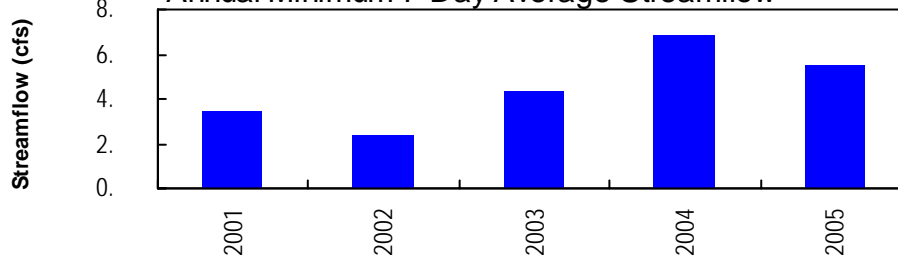
Monthly Mean of Current Water Year and Max, Mean, and Min Monthly Mean for 2000 – 2005



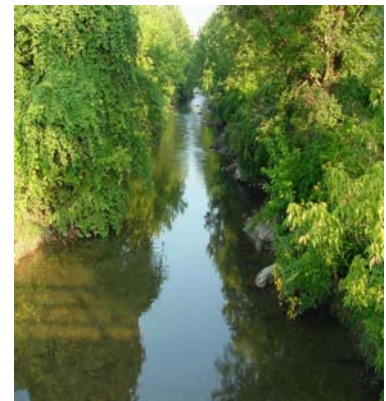
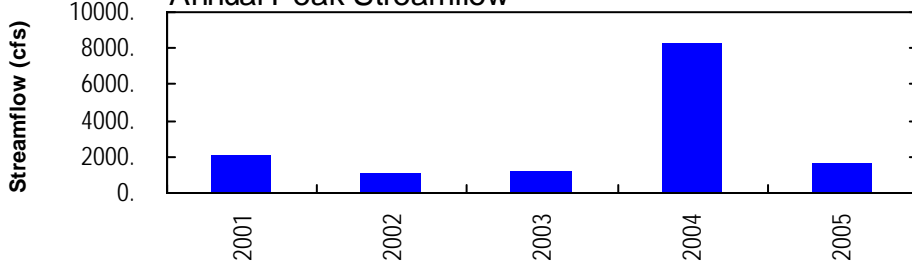
Annual Mean Streamflow



Annual Minimum 7-Day Average Streamflow



Annual Peak Streamflow



MONTOUR RUN BASIN

03085956 MONTOUR RUN AT SCOTT STATION NEAR IMPERIAL, PA

LOCATION.--Lat 40°27'23", long 80°10'34", Allegheny County, Hydrologic Unit 05030101, on left bank at upstream side of privately owned single span bridge on south side of Montour Run Road, SR3072, 0.3 mi downstream from McCalrens Run, and 0.9 mi upstream from Trout Run.

DRAINAGE AREA.--25.4 mi².

PERIOD OF RECORD.--August 2000 to current year.

GAGE.--Water-stage recorder. Datum of gage is 850.00 ft above National Geodetic Vertical Datum of 1929.

REMARKS.--Records good. Several measurements of water temperature were made during the year. Satellite telemetry at station.

PEAK DISCHARGES FOR CURRENT YEAR.--Peak discharges greater than a base discharge of 1,000 ft³/s and maximum (*):

Date	Time	Discharge ft ³ /s	Gage Height (ft)	Date	Time	Discharge ft ³ /s	Gage Height (ft)
Jan. 5	2330	*1,645	*7.45	July 5	1645	1,040	6.25
June 11	1900	1,545	7.27				

**DISCHARGE, CUBIC FEET PER SECOND, WATER YEAR OCTOBER 2004 TO SEPTEMBER 2005
DAILY MEAN VALUES**

DAY	OCT	NOV	DEC	JAN	FEB	MAR	APR	MAY	JUN	JUL	AUG	SEP
1	19	31	341	23	e12	50	40	37	21	19	6.9	29
2	20	39	109	19	e12	39	270	30	18	9.3	6.7	15
3	19	54	70	130	e12	33	191	27	28	8.0	6.7	10
4	18	91	52	167	e14	31	119	24	18	7.5	6.4	8.8
5	17	79	41	586	e18	35	72	22	15	212	7.8	7.9
6	16	46	36	855	e31	53	56	21	25	43	7.4	7.4
7	15	35	96	162	38	63	48	28	14	15	6.6	7.0
8	15	27	60	180	62	91	41	21	12	12	14	6.7
9	15	22	100	97	100	49	36	18	11	10	8.4	6.9
10	15	20	135	73	76	43	32	17	11	8.5	6.5	6.0
11	15	19	72	269	47	48	29	19	160	7.3	5.0	5.8
12	14	62	56	314	41	47	27	46	60	7.5	4.8	5.5
13	44	26	48	120	35	42	25	40	19	12	4.4	5.3
14	56	20	40	222	255	36	23	234	26	8.2	4.5	5.3
15	83	18	33	89	148	32	22	85	25	25	4.8	5.3
16	30	18	29	69	95	29	20	42	18	16	12	13
17	20	22	28	57	62	28	20	32	19	48	6.7	9.3
18	112	24	25	50	48	26	19	27	12	19	4.9	7.3
19	235	134	27	47	39	25	19	24	10	13	4.6	6.9
20	57	102	24	44	41	30	24	60	9.7	9.2	129	6.5
21	36	56	23	37	95	26	37	30	9.2	47	38	6.6
22	28	50	31	e37	56	23	27	25	8.9	14	9.4	6.0
23	24	42	189	e33	45	62	207	50	8.5	9.1	7.4	9.3
24	76	112	73	e29	44	54	96	35	8.2	8.0	7.2	6.8
25	32	91	43	e27	43	39	90	25	7.7	7.8	5.8	5.9
26	25	56	35	e21	41	34	53	21	7.3	48	8.1	22
27	21	46	27	e18	36	33	65	19	6.4	31	15	10
28	19	110	29	e16	52	116	39	67	13	11	10	7.2
29	104	53	25	e14	---	102	34	39	26	8.6	36	56
30	89	47	24	e14	---	55	63	36	38	7.7	57	11
31	46	---	27	e14	---	45	---	34	---	7.3	225	---
TOTAL	1335	1552	1948	3833	1598	1419	1844	1235	664.9	709.0	677.0	315.7
MEAN	43.1	51.7	62.8	124	57.1	45.8	61.5	39.8	22.2	22.9	21.8	10.5
MAX	235	134	341	855	255	116	270	234	160	212	225	56
MIN	14	18	23	14	12	23	19	17	6.4	7.3	4.4	5.3

STATISTICS OF MONTHLY MEAN DATA FOR WATER YEARS 2000 - 2005, BY WATER YEAR (WY)

MEAN	20.0	26.1	38.9	56.7	39.6	46.4	48.9	38.0	27.8	19.9	28.3	48.4
MAX	43.1	51.7	62.8	124	61.3	49.5	69.5	52.7	46.6	30.0	67.7	192
(WY)	2005	2005	2005	2005	2004	2002	2004	2004	2004	2004	2004	2004
MIN	10.2	7.01	22.2	17.4	19.3	44.1	28.2	13.9	15.6	5.58	9.17	9.21
(WY)	2002	2001	2003	2002	2002	2003	2003	2001	2001	2002	2002	2001

e Estimated.

OHIO RIVER MAIN STEM

03085956 MONTOUR RUN AT SCOTT STATION NEAR IMPERIAL, PA--Continued

SUMMARY STATISTICS	FOR 2004 CALENDAR YEAR		FOR 2005 WATER YEAR		WATER YEARS 2000 - 2005	
ANNUAL TOTAL	24401.4		17130.6			
ANNUAL MEAN	66.7		46.9		36.6	
HIGHEST ANNUAL MEAN					61.4	2004
LOWEST ANNUAL MEAN					22.4	2002
HIGHEST DAILY MEAN	2870	Sep 17	855	Jan 6	2870	Sep 17 2004
LOWEST DAILY MEAN	7.0	Jul 25	4.4	Aug 13	2.0	Aug 11 2002
ANNUAL SEVEN-DAY MINIMUM	10	Jul 19	5.5	Aug 9	2.4	Aug 8 2002
MAXIMUM PEAK FLOW			1640	Jan 5	a 8280	Sep 17 2004
MAXIMUM PEAK STAGE			7.45	Jan 5	15.58	Sep 17 2004
INSTANTANEOUS LOW FLOW			4.2	Aug 14,15	1.8	Aug 12 2002
10 PERCENT EXCEEDS	109		98		68	
50 PERCENT EXCEEDS	31		28		18	
90 PERCENT EXCEEDS	14		7.3		5.3	

a From rating curve extended above 4,600 ft³/s.

