



2005 Water Year  
YOUGHIOGHENY RIVER BASIN  
03082500 Youghiogheny River at Connellsville, PA

Latitude: 40° 01' 03"

Longitude: 079° 35' 38"

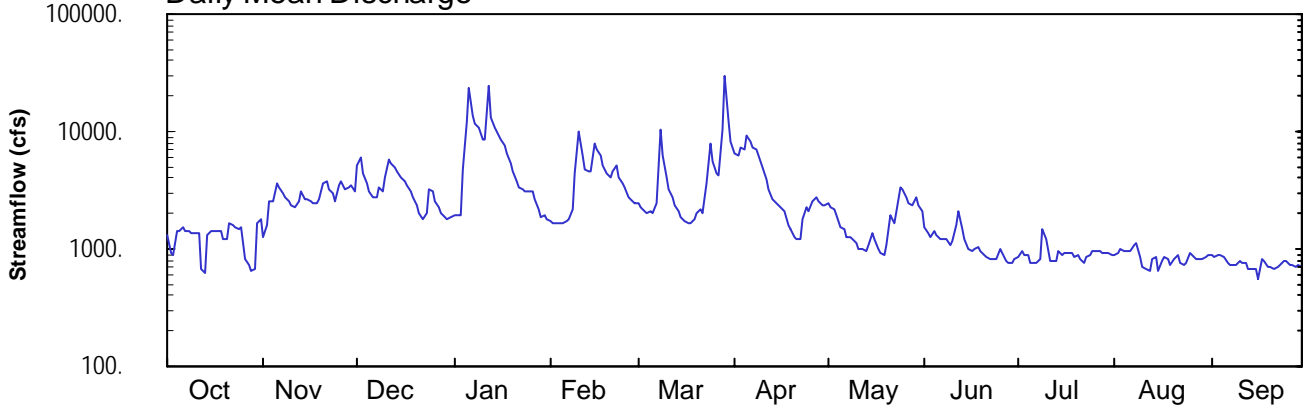
Hydrologic Unit Code: 05020006

Fayette County

Datum: 860.13 feet

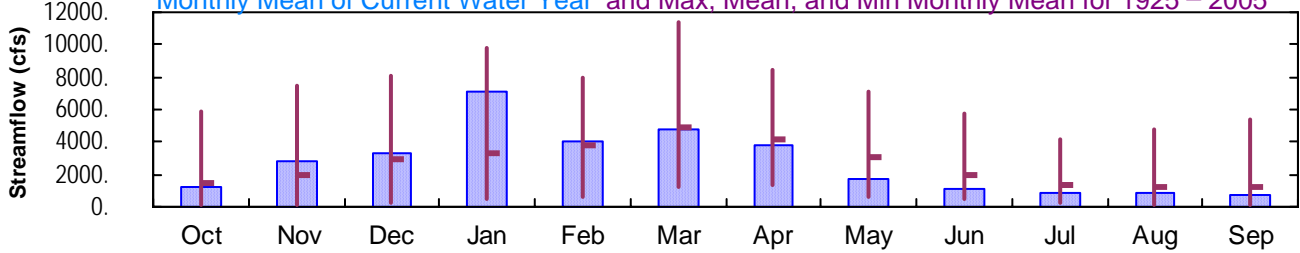
Drainage Area: 1326. mi<sup>2</sup>

### Daily Mean Discharge

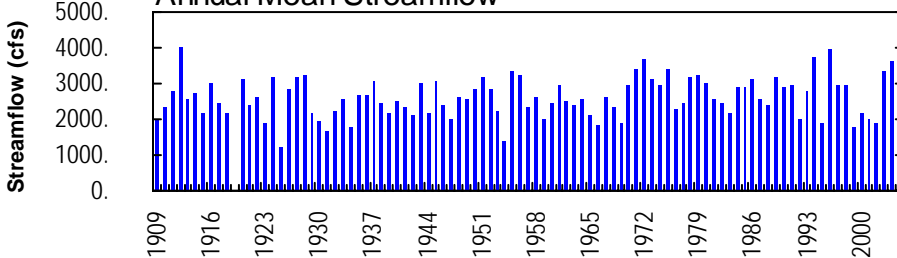


### Monthly Statistics

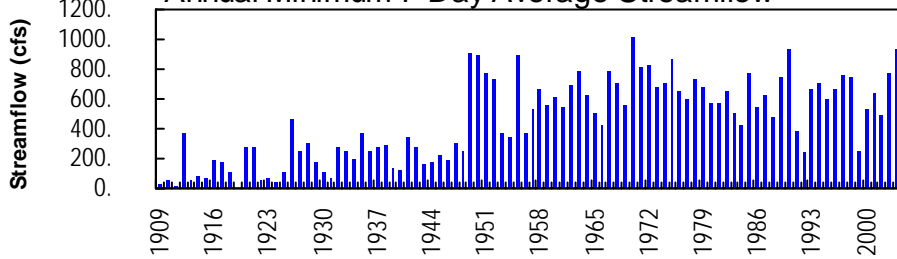
Monthly Mean of Current Water Year and Max, Mean, and Min Monthly Mean for 1925 – 2005



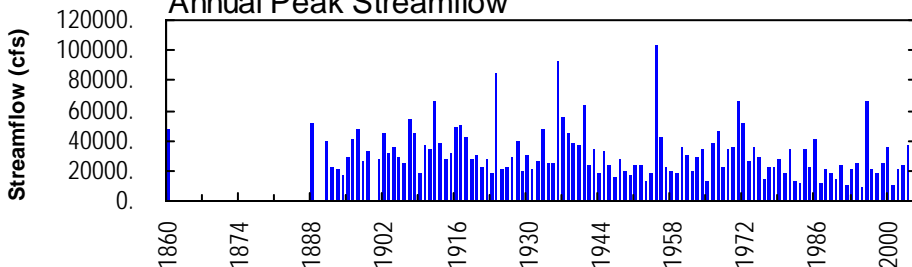
### Annual Mean Streamflow



### Annual Minimum 7-Day Average Streamflow



### Annual Peak Streamflow



**YOUGHIOGHENY RIVER BASIN**

**03082500 YOUGHIOGHENY RIVER AT CONNELLSVILLE, PA**

**LOCATION.**--Lat 40°01'03", long 79°35'38", Fayette County, Hydrologic Unit 05020006, on left bank at downstream side of Crawford Avenue bridge at Conneltsville, 1.2 mi upstream from Mounts Creek, at mile 44.0.

**DRAINAGE AREA.**--1,326 mi<sup>2</sup>.

**PERIOD OF RECORD.**--July 1908 to current year. Monthly discharge only for some periods, published in WSP 1305.

**REVISED RECORDS.**--WSP 743: Drainage area. WSP 1305: 1912 (M), 1914 (M), 1916-17 (M), 1918, 1922-25. WSP 1435: 1919-20. WSP 1725: 1916, 1932 (monthly, yearly summaries).

**GAGE.**--Water-stage recorder. Datum of gage is 860.13 ft above National Geodetic Vertical Datum of 1929. Prior to Aug. 15, 1928, nonrecording gage, and Aug. 15, 1928 to July 7, 1958, water-stage recorder at same site and datum. July 8, 1958 to Sept. 8, 1959, nonrecording gage at site 0.4 mi downstream at different datum.

**REMARKS.**--No estimated daily discharges. Records good. Flow regulated since January 1925 by Deep Creek Reservoir (station 03076000), since December 1942 by Youghiogheny River Lake (station 03077000) 29.4 mi upstream, and by several smaller reservoirs above station. Several measurements of water temperature were made during the year. U.S. Army Corps of Engineers satellite telemetry at station.

DISCHARGE, CUBIC FEET PER SECOND, WATER YEAR OCTOBER 2004 TO SEPTEMBER 2005  
DAILY MEAN VALUES

DAY	OCT	NOV	DEC	JAN	FEB	MAR	APR	MAY	JUN	JUL	AUG	SEP
1	1290	1270	5100	1950	1710	2440	6570	2430	1560	871	889	902
2	925	1580	5990	1940	1650	2290	6180	2300	1390	950	914	868
3	893	2500	4340	1960	1670	2120	7280	2200	1260	905	1010	897
4	1420	2550	3610	4700	1680	2000	6950	1910	1400	875	956	881
5	1400	3620	3120	11900	1670	2100	9330	1510	1300	750	951	856
6	1530	3400	2810	23200	1690	2040	8100	1470	1210	747	943	769
7	1420	2990	2810	13900	1790	2420	7300	1280	1240	762	1070	739
8	1400	2740	3360	11900	2220	10400	7090	1270	1220	833	1130	734
9	1380	2560	3120	10900	4340	6240	6170	1210	1100	1470	857	729
10	1380	2400	4040	8660	9850	4020	4940	1120	1150	1230	711	799
11	1350	2310	5800	8610	6160	3230	3950	982	1570	778	690	756
12	686	2560	5420	24400	4730	2740	3220	1020	2080	785	657	748
13	623	3130	4970	13000	4560	2380	2670	950	1480	806	819	672
14	1310	2630	4560	10600	4540	2100	2530	1080	1210	946	847	670
15	1410	2640	4110	10000	7840	1880	2400	1370	1010	878	656	673
16	1420	2540	3720	8410	7060	1750	2270	1230	973	934	800	550
17	1440	2480	3460	7560	6240	1660	2060	1010	1010	930	855	824
18	1450	2440	3150	6480	5150	1670	1570	927	1020	914	826	790
19	1200	2610	2770	5340	4350	1810	1470	878	949	846	746	716
20	1230	3630	2400	4570	4080	2000	1240	1100	896	898	816	706
21	1660	3700	2020	3720	4630	2140	1220	1920	851	817	876	670
22	1600	3260	1790	3370	5110	2000	1210	1660	829	756	774	705
23	1520	2970	1980	3230	4120	3670	1770	2080	838	852	731	718
24	1480	2570	3220	3100	3670	7890	2250	3330	812	880	774	790
25	1520	3420	3060	3120	3320	5500	2090	3190	983	946	910	801
26	834	3820	2580	3120	2740	4410	2550	2770	941	965	895	733
27	733	3220	2290	2650	2500	4240	2740	2460	787	954	817	718
28	641	3390	2030	2160	2450	10500	2520	2380	750	923	810	705
29	677	3470	1850	1870	---	29500	2400	2720	752	929	828	736
30	1640	3060	1820	1970	---	12400	2390	2390	821	918	844	713
31	1770	---	1900	1800	---	8360	---	2070	---	902	876	---
TOTAL	39232	85460	103200	220090	111520	147900	114430	54217	33392	27950	26278	22568
MEAN	1266	2849	3329	7100	3983	4771	3814	1749	1113	902	848	752
MAX	1770	3820	5990	24400	9850	29500	9330	3330	2080	1470	1130	902
MIN	623	1270	1790	1800	1650	1660	1210	878	750	747	656	550
(†)	-369	-165	+191	-73	+252	+1380	-431	+9.0	-195	-193	-618	-688

† Change in contents, equivalent in cubic feet per second, in Deep Creek Reservoir and Youghiogheny River Lake. Records of contents in Deep Creek Reservoir furnished by Reliant Energy. Records of contents in Youghiogheny River Lake furnished by U.S. Army Corps of Engineers.

YOUGHIOGHENY RIVER BASIN

03082500 YOUGHIOGHENY RIVER AT CONNELLSVILLE, PA--Continued

STATISTICS OF MONTHLY MEAN DATA FOR WATER YEARS 1925 - 2005, BY WATER YEAR (WY) (SINCE REGULATION)

	OCT	NOV	DEC	JAN	FEB	MAR	APR	MAY	JUN	JUL	AUG	SEP
MEAN	1423	1965	2944	3315	3793	4903	4162	3114	1926	1327	1268	1244
MAX (WY)	5938	7518	8050	9737	7916	11370	8463	7142	5805	4143	4772	5400
MIN (WY)	1955	1986	1973	1937	1939	1936	1993	1996	1941	1985	1956	1971
MIN (WY)	139	84.5	295	465	630	1189	1321	662	504	279	155	146
(WY)	1931	1931	1999	1925	1934	1990	1925	1926	1925	1930	1930	1925

SUMMARY STATISTICS FOR 2004 CALENDAR YEAR FOR 2005 WATER YEAR WATER YEARS 1925 - 2005

ANNUAL TOTAL	1177961		986237			
ANNUAL MEAN	3218	† +42	2702	† -74	2610	
HIGHEST ANNUAL MEAN					3944	1996
LOWEST ANNUAL MEAN					1223	1925
HIGHEST DAILY MEAN	24800	Sep 18	29500	Mar 29	58100	Mar 18 1936
LOWEST DAILY MEAN	623	Oct 13	550	Sep 16	39	Nov 16 1930
ANNUAL SEVEN-DAY MINIMUM	935	Jul 6	695	Sep 10	62	Nov 14 1930
MAXIMUM PEAK FLOW			37400	Mar 29	a103000	Oct 16 1954
MAXIMUM PEAK STAGE			14.11	Mar 29	21.96	Oct 16 1954
10 PERCENT EXCEEDS	6560		5880		5810	
50 PERCENT EXCEEDS	2240		1710		1630	
90 PERCENT EXCEEDS	1000		766		608	

STATISTICS OF MONTHLY MEAN DATA FOR WATER YEARS 1909 - 1924, BY WATER YEAR (WY) (PRIOR TO REGULATION)

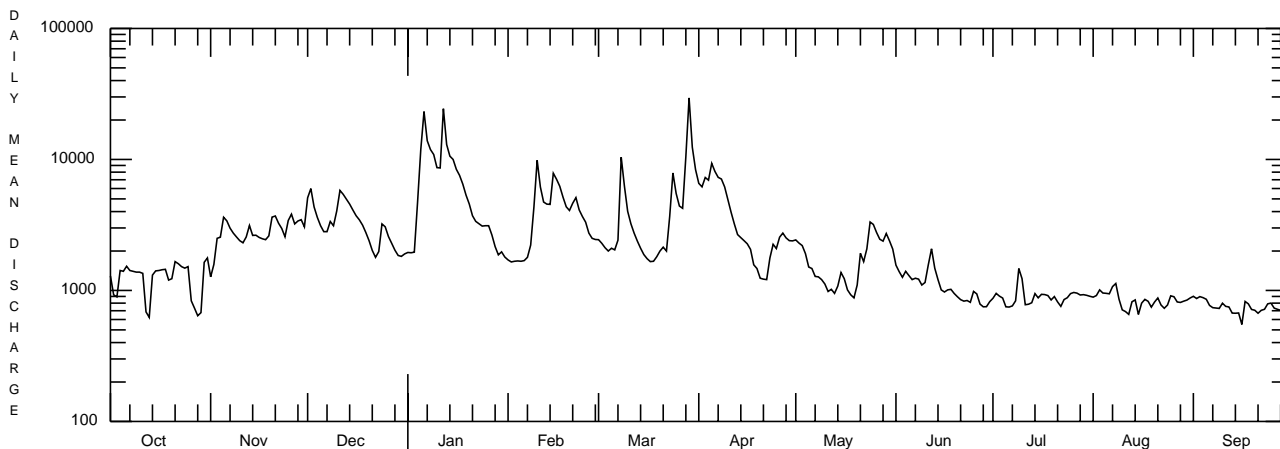
	OCT	NOV	DEC	JAN	FEB	MAR	APR	MAY	JUN	JUL	AUG	SEP
MEAN	1126	1653	2574	4697	4098	5490	3830	2696	2379	1110	764	1100
MAX (WY)	5117	4937	5795	8679	9354	9777	6572	6675	5224	5102	1904	5158
MIN (WY)	1912	1914	1922	1913	1918	1912	1914	1924	1910	1912	1912	1911
MIN (WY)	36.4	68.4	342	503	1589	1913	1335	1125	938	221	99.5	132
(WY)	1909	1909	1909	1918	1924	1915	1921	1911	1922	1918	1910	1922

SUMMARY STATISTICS WATER YEARS 1909 - 1924

ANNUAL MEAN	2620	
HIGHEST ANNUAL MEAN	3976	1912
LOWEST ANNUAL MEAN	1879	1923
HIGHEST DAILY MEAN	59200	Mar 21 1912
LOWEST DAILY MEAN	11	Oct 18 1910
ANNUAL SEVEN-DAY MINIMUM	14	Oct 15 1910
MAXIMUM PEAK FLOW	b65900	Mar 29 1924
MAXIMUM PEAK STAGE	c20.5	Mar 29 1924
INSTANTANEOUS LOW FLOW	11	Sep 23 1908d
ANNUAL RUNOFF (CFSM)	1.98	
ANNUAL RUNOFF (INCHES)	26.84	
10 PERCENT EXCEEDS	6200	
50 PERCENT EXCEEDS	1370	
90 PERCENT EXCEEDS	195	

† Change in contents, equivalent in cubic feet per second, in Deep Creek Reservoir and Youghiogheny River Lake. Records of contents in Deep Creek Reservoir furnished by Reliant Energy. Records of contents in Youghiogheny River Lake furnished by U.S. Army Corps of Engineers.

- a From rating curve extended above 55,000 ft<sup>3</sup>/s.
- b Estimated from hydrograph.
- c From graph based on gage readings.
- d Also Sept. 26, 27, 1908 and Oct. 18, 1910.



OCTOBER 1, 2004 TO SEPTEMBER 30, 2005