



2005 Water Year
KISKIMINETAS RIVER BASIN
03042500 Two Lick Creek at Graceton, PA

Latitude: 40° 31' 02"

Longitude: 079° 10' 19"

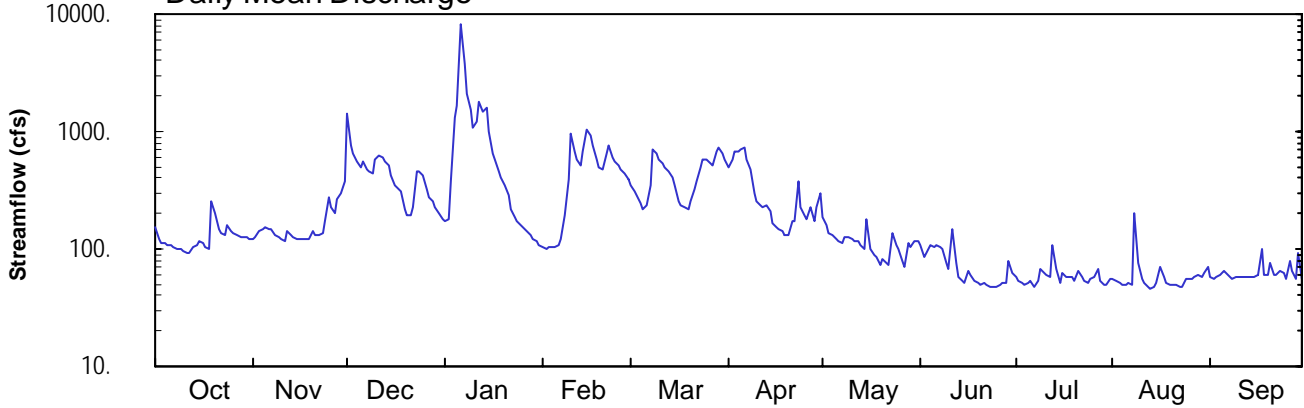
Hydrologic Unit Code: 05010007

Indiana County

Datum: 981.63 feet

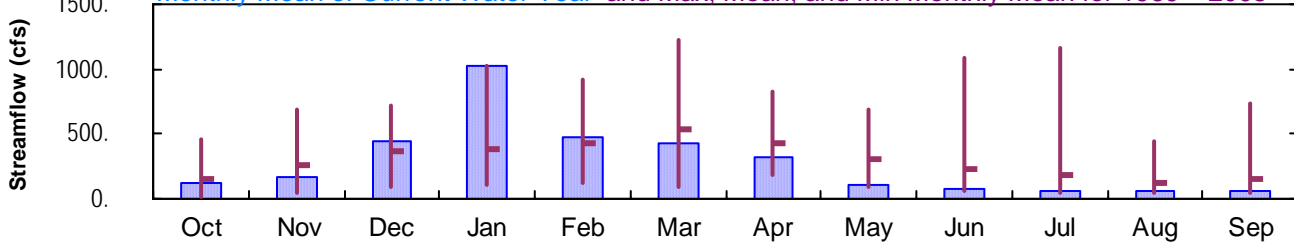
Drainage Area: 171. mi²

Daily Mean Discharge

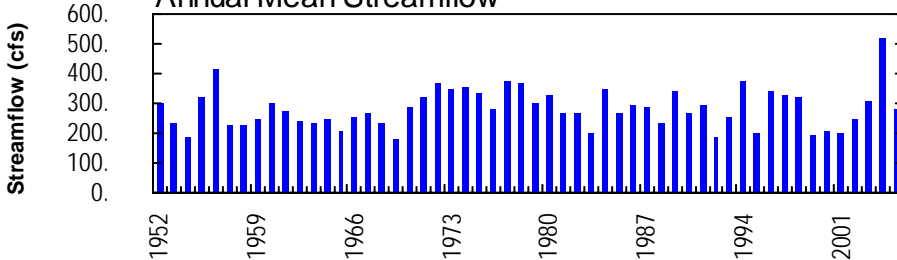


Monthly Statistics

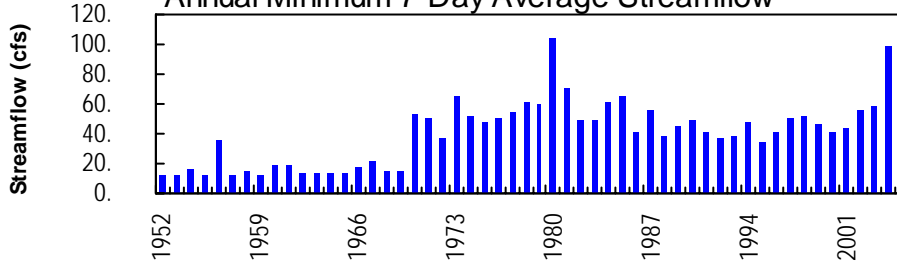
Monthly Mean of Current Water Year and Max, Mean, and Min Monthly Mean for 1969 – 2005



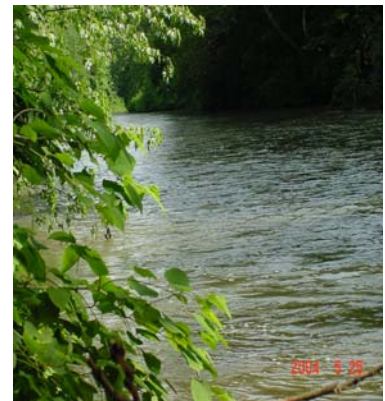
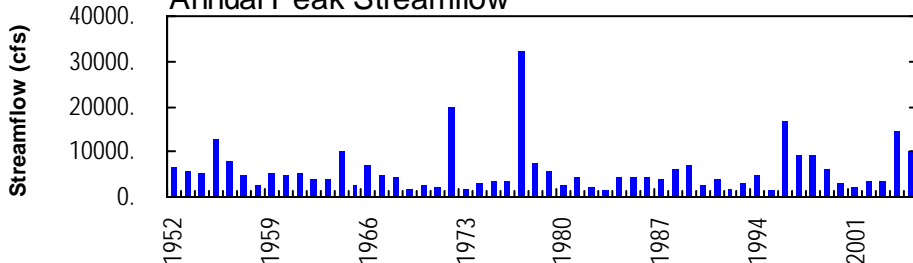
Annual Mean Streamflow



Annual Minimum 7-Day Average Streamflow



Annual Peak Streamflow



KISKIMINETAS RIVER BASIN

03042500 TWO LICK CREEK AT GRACETON, PA

LOCATION.--Lat 40°31'02", long 79°10'19", Indiana County, Hydrologic Unit 05010007, on right bank 0.8 mi upstream from highway bridge on road leading west from Graceton, 1.1 mi downstream from Tearing Run, 1.5 mi upstream from Cherry Run, and 8 mi northeast of Blairsville.

DRAINAGE AREA.--171 mi².

PERIOD OF RECORD.--September 1951 to current year.

GAGE.--Water-stage recorder. Datum of gage is 981.63 ft above National Geodetic Vertical Datum of 1929.

REVISED RECORDS.--WDR PA-78-3: 1977 (M).

REMARKS.--Records good except those for estimated daily discharges, which are poor. Diurnal fluctuation caused by mine pumpage and by sewage-disposal plant above station. Flow regulated since December 1968 by Two Lick Creek Reservoir 10 mi upstream, capacity, 16,240 acre-ft and since July 1971 by Yellow Creek Lake (station 03042260) 11 mi upstream. Several measurements of water temperature were made during the year. U.S. Army Corps of Engineers satellite telemetry at station.

DISCHARGE, CUBIC FEET PER SECOND, WATER YEAR OCTOBER 2004 TO SEPTEMBER 2005
DAILY MEAN VALUES

DAY	OCT	NOV	DEC	JAN	FEB	MAR	APR	MAY	JUN	JUL	AUG	SEP
1	153	121	1430	175	e105	353	499	186	110	57	55	57
2	121	124	776	178	e100	310	588	157	86	53	53	57
3	113	143	653	370	e102	287	684	137	92	51	51	58
4	112	145	556	1320	e105	246	676	130	110	49	50	60
5	106	155	505	1690	e105	214	709	122	104	51	49	64
6	106	150	552	8270	e110	235	742	118	110	53	51	61
7	103	148	475	3700	e120	348	579	113	105	48	50	57
8	101	131	466	2130	195	699	470	125	101	53	206	57
9	100	124	449	1540	393	640	298	126	76	68	77	58
10	97	123	581	1090	955	574	260	123	67	63	55	57
11	94	115	620	1210	675	534	232	116	151	60	51	57
12	92	143	605	1780	585	500	223	118	76	57	48	58
13	106	132	567	1470	510	458	235	110	58	107	46	58
14	109	126	519	1600	682	403	207	100	53	67	48	58
15	116	123	427	989	1060	346	167	178	51	51	51	58
16	113	120	352	654	915	251	154	100	65	63	72	60
17	102	120	331	570	756	239	147	89	61	57	57	99
18	100	121	305	e465	571	223	141	84	54	58	52	59
19	251	121	220	e410	499	219	130	73	52	57	50	59
20	204	140	194	e345	469	258	129	82	50	54	50	77
21	146	134	195	e290	650	321	174	75	51	66	50	61
22	135	132	230	e215	767	375	174	72	50	58	48	59
23	131	134	454	e190	601	497	381	134	48	53	49	66
24	160	174	457	e170	551	586	225	109	48	51	55	62
25	142	280	429	e160	510	577	192	98	47	55	55	56
26	136	224	323	e150	476	539	182	78	49	57	56	80
27	130	204	277	e140	441	510	226	70	51	67	59	65
28	127	267	257	e130	392	674	171	110	52	54	59	56
29	126	300	224	e120	---	739	227	104	80	49	57	92
30	128	382	201	e115	---	656	297	117	63	50	62	56
31	124	---	181	e110	---	571	---	116	---	56	72	---
TOTAL	3884	4856	13811	31746	13400	13382	9519	3470	2171	1793	1844	1882
MEAN	125	162	446	1024	479	432	317	112	72.4	57.8	59.5	62.7
MAX	251	382	1430	8270	1060	739	742	186	151	107	206	99
MIN	92	115	181	110	100	214	129	70	47	48	46	56
(†)	-16	+22	-19	-1.1	+8.1	+12	- .50	+1.7	-7.0	-21	-20	-40

† Change in contents, equivalent in cubic feet per second, in Yellow Creek Lake and Two Lick Creek Reservoir. Records of contents in Two Lick Creek Reservoir furnished by Midwest Generation.

e Estimated.

KISKIMINETAS RIVER BASIN

03042500 TWO LICK CREEK AT GRACETON, PA--Continued

STATISTICS OF MONTHLY MEAN DATA FOR WATER YEARS 1969 - 2005, BY WATER YEAR (WY) (SINCE REGULATION)

	OCT	NOV	DEC	JAN	FEB	MAR	APR	MAY	JUN	JUL	AUG	SEP
MEAN	147	258	362	380	429	529	431	308	228	184	125	153
MAX (WY)	1977	1998	1973	2005	1986	1994	1984	2002	1972	1977	2003	2004
MIN (WY)	1969	1992	1999	1983	1993	1969	1997	1986	1992	1993	1988	1995

SUMMARY STATISTICS FOR 2004 CALENDAR YEAR FOR 2005 WATER YEAR WATER YEARS 1969 - 2005

ANNUAL TOTAL	174442	101758	
ANNUAL MEAN	477	279	294
HIGHEST ANNUAL MEAN			522
LOWEST ANNUAL MEAN			178
HIGHEST DAILY MEAN	9610	Sep 18	21900
LOWEST DAILY MEAN	78	Sep 6	12
ANNUAL SEVEN-DAY MINIMUM	99	Sep 1	15
MAXIMUM PEAK FLOW			a32000
MAXIMUM PEAK STAGE			b18.65
INSTANTANEOUS LOW FLOW			12
10 PERCENT EXCEEDS	852	593	610
50 PERCENT EXCEEDS	320	126	180
90 PERCENT EXCEEDS	121	53	59

STATISTICS OF MONTHLY MEAN DATA FOR WATER YEARS 1952 - 1968, BY WATER YEAR (WY) (PRIOR TO REGULATION)

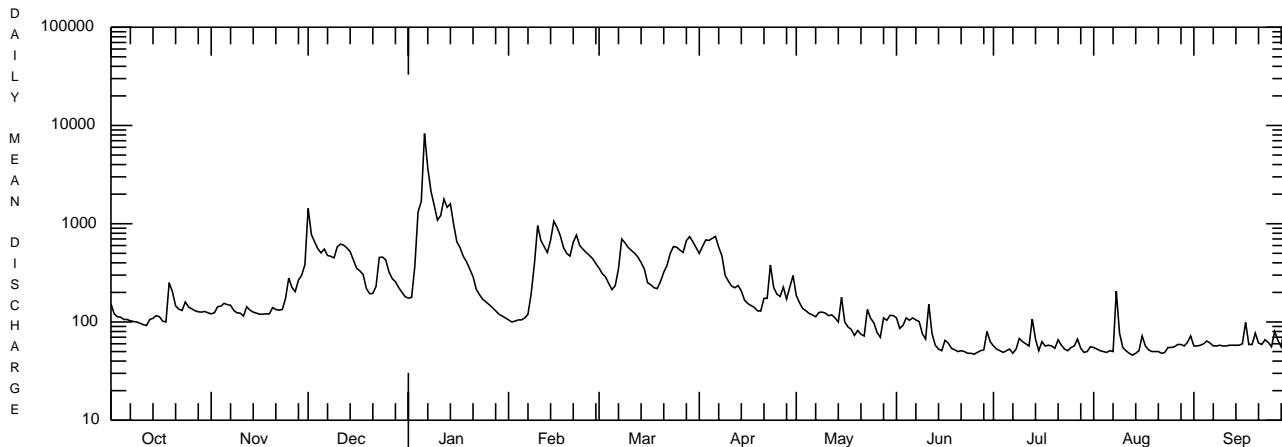
	OCT	NOV	DEC	JAN	FEB	MAR	APR	MAY	JUN	JUL	AUG	SEP
MEAN	101	139	256	367	444	604	472	346	130	100	90.6	61.1
MAX (WY)	1955	1960	1955	1952	1956	1963	1957	1966	1960	1956	1956	1962
MIN (WY)	1964	1954	1961	1956	1963	1957	1968	1955	1965	1962	1957	1952

SUMMARY STATISTICS WATER YEARS 1952 - 1968

ANNUAL MEAN	259
HIGHEST ANNUAL MEAN	415
LOWEST ANNUAL MEAN	185
HIGHEST DAILY MEAN	6800
LOWEST DAILY MEAN	8.7
ANNUAL SEVEN-DAY MINIMUM	12
MAXIMUM PEAK FLOW	c12900
MAXIMUM PEAK STAGE	12.71
INSTANTANEOUS LOW FLOW	11
ANNUAL RUNOFF (CFSM)	1.52
ANNUAL RUNOFF (INCHES)	20.67
10 PERCENT EXCEEDS	640
50 PERCENT EXCEEDS	118
90 PERCENT EXCEEDS	21

† Change in contents, equivalent in cubic feet per second, in Yellow Creek Lake and Two Lick Creek Reservoir. Records of contents in Two Lick Creek Reservoir furnished by Midwest Generation.

- a From rating curve extended above 7,800 ft³/s on basis of slope-area measurement of peak flow and contracted-opening measurement at gage height 12.71 ft at site 1.6 mi upstream from gage, adjusted to gage site.
- b From highwater mark.
- c From rating curve extended above 4,500 ft³/s on basis of contracted-opening measurement of peak flow at site 1.6 mi upstream from gage, adjusted to gage site.



OCTOBER 1, 2004 TO SEPTEMBER 30, 2005