



2005 Water Year
KISKIMINETAS RIVER BASIN
03042280 Yellow Creek near Homer City, PA

Latitude: 40° 34 ' 21"

Longitude: 079° 06 ' 13"

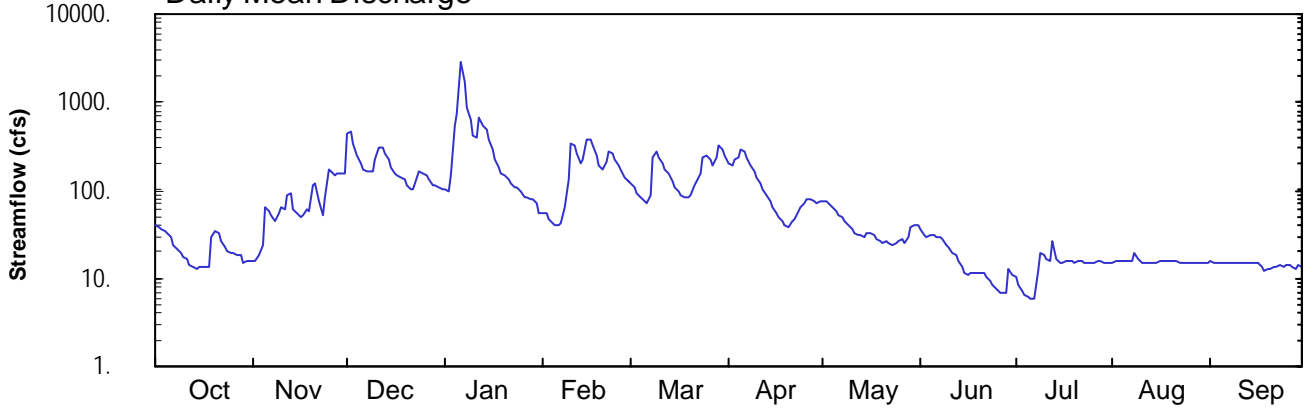
Hydrologic Unit Code: 05010007

Indiana County

Datum: 1140.00 feet

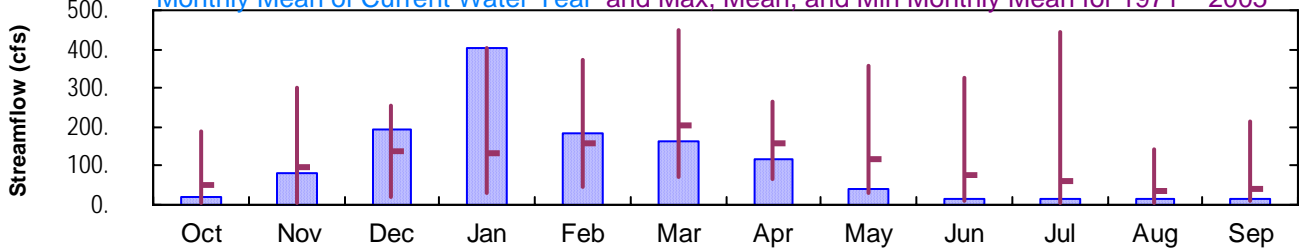
Drainage Area: 57.4 mi²

Daily Mean Discharge

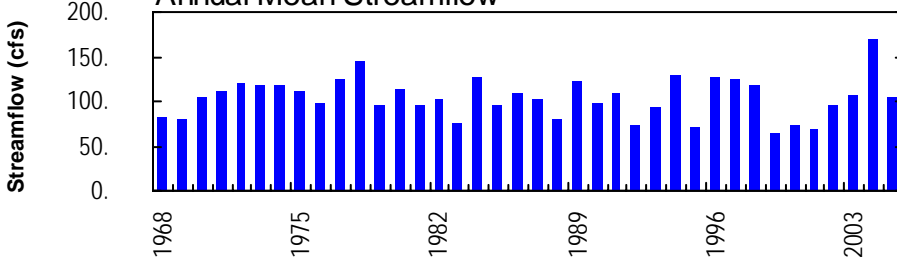


Monthly Statistics

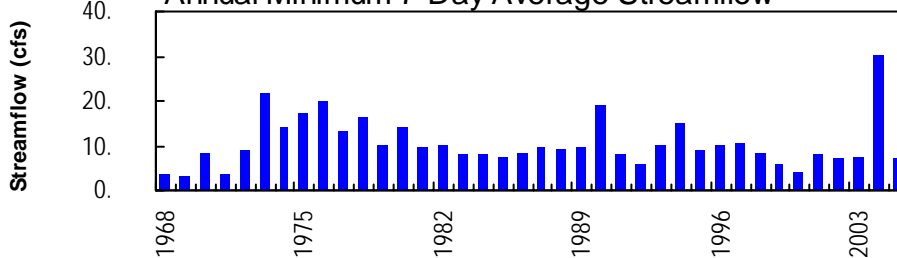
Monthly Mean of Current Water Year and Max, Mean, and Min Monthly Mean for 1971 – 2005



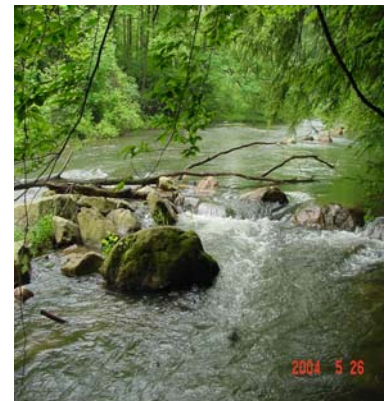
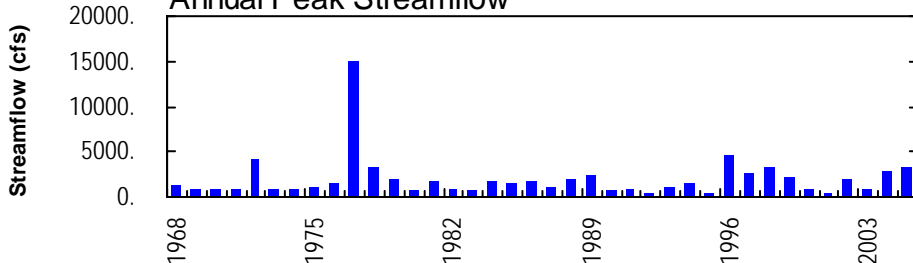
Annual Mean Streamflow



Annual Minimum 7-Day Average Streamflow



Annual Peak Streamflow



KISKIMINETAS RIVER BASIN

03042280 YELLOW CREEK NEAR HOMER CITY, PA

LOCATION.--Lat 40°34'21", long 79°06'13", Indiana County, Hydrologic Unit 05010007, on left bank 0.3 mi upstream from Central Indiana County Water Authority dam, 0.4 mi upstream from Ferrier Run, which has been diverted, and 3.5 mi northeast of Homer City.

DRAINAGE AREA.--57.4 mi², excludes that of Ferrier Run.

PERIOD OF RECORD.--October 1967 to current year.

REVISED RECORDS.--WDR PA-76-3: Drainage area.

GAGE.--Water-stage recorder. Elevation of gage is 1,140 ft above National Geodetic Vertical Datum of 1929, from topographic map.

REMARKS.--Records good except those for estimated daily discharges, which are poor. Flow regulated since July 1971 by Yellow Creek Lake (station 03042260) 4.2 mi upstream. Discharges between the months of November and March include flow diverted from Ferrier Run due to channel modifications on Ferrier Run. High water diversion upstream into station from Ferrier Run since November 2004. Several measurements of water temperature were made during the year. Satellite telemetry at station.

DISCHARGE, CUBIC FEET PER SECOND, WATER YEAR OCTOBER 2004 TO SEPTEMBER 2005
DAILY MEAN VALUES

DAY	OCT	NOV	DEC	JAN	FEB	MAR	APR	MAY	JUN	JUL	AUG	SEP
1	e40	16	446	102	55	118	197	77	37	10	15	16
2	e38	15	456	96	55	108	187	76	32	8.5	16	15
3	e36	19	345	151	46	94	227	70	30	7.2	16	15
4	e34	25	254	544	43	82	234	64	31	6.7	16	15
5	e32	64	199	752	41	78	287	59	30	6.1	16	15
6	e30	59	173	2800	40	72	271	53	30	5.9	16	15
7	24	51	166	1680	42	86	230	49	30	6.0	16	15
8	22	45	168	872	66	240	192	44	27	12	20	15
9	19	54	168	625	137	280	167	40	24	20	16	15
10	18	64	224	424	342	238	139	37	22	18	15	15
11	16	60	302	388	324	200	119	33	19	17	15	15
12	14	89	300	652	257	177	102	31	18	16	15	15
13	13	94	259	539	201	152	88	31	16	26	15	15
14	13	62	219	481	223	126	77	29	14	16	15	15
15	13	54	178	377	379	109	66	33	12	15	15	15
16	14	49	159	291	369	96	56	33	11	15	16	15
17	13	52	150	227	322	88	49	31	11	16	16	14
18	14	60	142	179	251	84	44	29	11	16	16	12
19	29	57	134	159	194	83	40	26	11	16	16	13
20	35	113	115	148	170	89	37	26	11	15	16	13
21	33	123	105	136	217	113	44	27	11	16	15	13
22	26	76	103	118	281	124	47	25	10	16	15	13
23	22	53	143	109	262	154	58	24	9.4	15	15	14
24	21	85	165	107	222	241	64	25	8.4	15	15	14
25	20	176	154	95	191	254	72	27	7.5	15	15	14
26	20	160	148	84	168	228	78	28	6.9	15	15	14
27	19	151	135	81	139	195	79	26	6.9	16	15	14
28	19	159	113	79	125	230	75	29	6.7	16	15	13
29	15	160	111	78	---	315	73	39	13	15	15	15
30	15	153	106	70	---	295	74	40	11	15	15	14
31	16	---	100	55	---	243	---	40	---	15	15	---
TOTAL	693	2398	5940	12499	5162	4992	3473	1201	517.8	437.4	482	431
MEAN	22.4	79.9	192	403	184	161	116	38.7	17.3	14.1	15.5	14.4
MAX	40	176	456	2800	379	315	287	77	37	26	20	16
MIN	13	15	100	55	40	72	37	24	6.7	5.9	15	12
CFSM	0.39	1.39	3.34	7.02	3.21	2.81	2.02	0.67	0.30	0.25	0.27	0.25
IN.	0.45	1.55	3.85	8.10	3.35	3.24	2.25	0.78	0.34	0.28	0.31	0.28

e Estimated.

KISKIMINETAS RIVER BASIN

03042280 YELLOW CREEK NEAR HOMER CITY, PA--Continued

STATISTICS OF MONTHLY MEAN DATA FOR WATER YEARS 1971 - 2005, BY WATER YEAR (WY) (SINCE REGULATION)

	OCT	NOV	DEC	JAN	FEB	MAR	APR	MAY	JUN	JUL	AUG	SEP
MEAN	52.0	96.1	136	133	159	203	159	116	76.8	60.0	34.4	43.1
MAX (WY)	186	303	254	403	374	447	264	358	324	443	144	216
MIN (WY)	1978	1998	1973	2005	1981	1994	2004	1978	1972	1977	2004	2004
MIN (WY)	6.10	6.85	21.1	32.1	44.4	70.8	68.8	28.5	12.2	5.95	5.46	8.02
(WY)	1992	1999	1999	2000	1993	1990	1997	2001	1999	1971	1971	2002

SUMMARY STATISTICS FOR 2004 CALENDAR YEAR FOR 2005 WATER YEAR WATER YEARS 1971 - 2005

ANNUAL TOTAL	56418	38226.2	
ANNUAL MEAN	154	105	105
HIGHEST ANNUAL MEAN			169
LOWEST ANNUAL MEAN			64.2
HIGHEST DAILY MEAN	2320	Sep 18	2800
LOWEST DAILY MEAN	13	Oct 13a	5.9
ANNUAL SEVEN-DAY MINIMUM	13	Oct 12	7.2
MAXIMUM PEAK FLOW			3370
MAXIMUM PEAK STAGE			7.05
ANNUAL RUNOFF (CFSM)	2.69		1.82
ANNUAL RUNOFF (INCHES)	36.56		24.77
10 PERCENT EXCEEDS	297	242	236
50 PERCENT EXCEEDS	104	40	60
90 PERCENT EXCEEDS	34	14	11

STATISTICS OF MONTHLY MEAN DATA FOR WATER YEARS 1968 - 1970, BY WATER YEAR (WY) (PRIOR TO REGULATION)

	OCT	NOV	DEC	JAN	FEB	MAR	APR	MAY	JUN	JUL	AUG	SEP
MEAN	24.6	72.0	119	113	146	136	160	148	51.0	39.6	39.9	26.9
MAX (WY)	51.8	105	142	148	210	199	243	212	74.7	75.4	63.0	66.6
MIN (WY)	1968	1968	1969	1969	1970	1970	1970	1968	1970	1969	1969	1970
MIN (WY)	7.87	43.9	102	90.8	112	46.4	62.7	103	25.5	7.11	13.0	5.34
(WY)	1969	1970	1968	1970	1969	1969	1968	1969	1969	1968	1968	1969

SUMMARY STATISTICS WATER YEARS 1968 - 1970

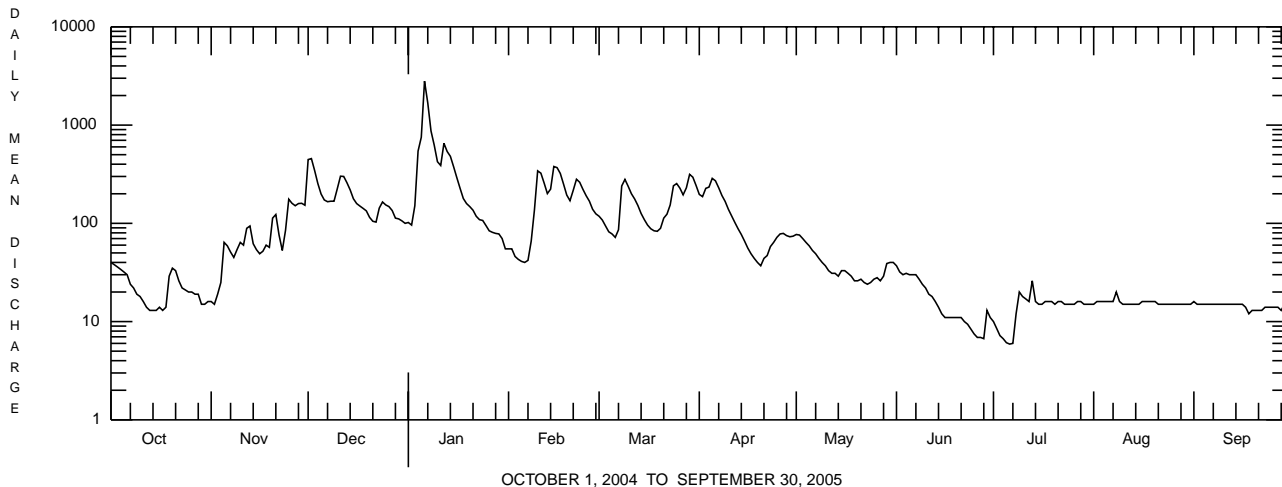
ANNUAL MEAN	89.4
HIGHEST ANNUAL MEAN	104
LOWEST ANNUAL MEAN	80.7
HIGHEST DAILY MEAN	1100
LOWEST DAILY MEAN	3.0
ANNUAL SEVEN-DAY MINIMUM	3.3
MAXIMUM PEAK FLOW	c1300
MAXIMUM PEAK STAGE	d7.83
INSTANTANEOUS LOW FLOW	1.4
ANNUAL RUNOFF (CFSM)	1.56
ANNUAL RUNOFF (INCHES)	21.16
10 PERCENT EXCEEDS	213
50 PERCENT EXCEEDS	50
90 PERCENT EXCEEDS	8.0

a Also Oct. 14, 15, 17.

b From rating curve extended above 4,100 ft³/s on basis of computation of peak flow over dam, gage height 7.46 ft.

c About.

d Backwater from ice.



OCTOBER 1, 2004 TO SEPTEMBER 30, 2005