



2005 Water Year
KISKIMINETAS RIVER BASIN
03042000 Blacklick Creek at Josephine, PA

Latitude: 40° 28 ' 24"

Longitude: 079° 11 ' 01"

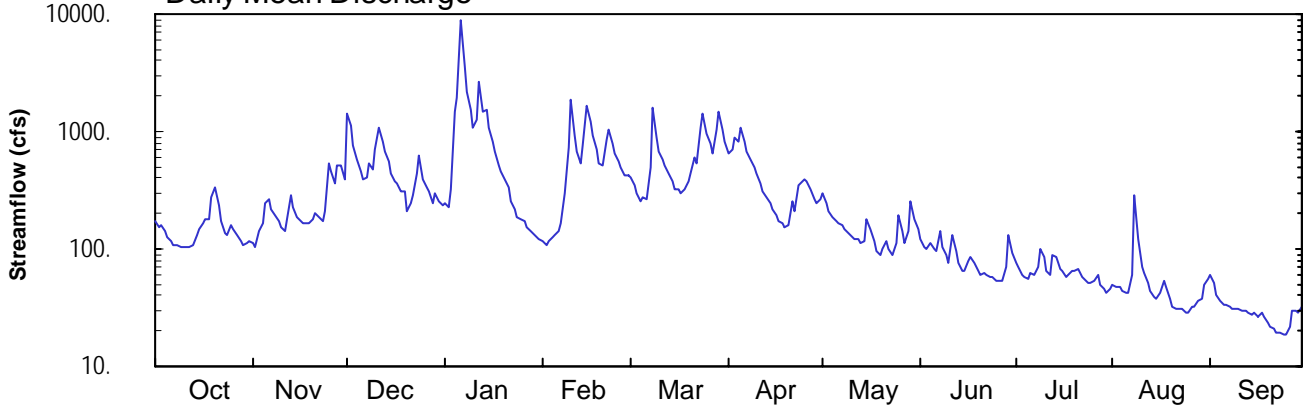
Hydrologic Unit Code: 05010007

Indiana County

Datum: 975.82 feet

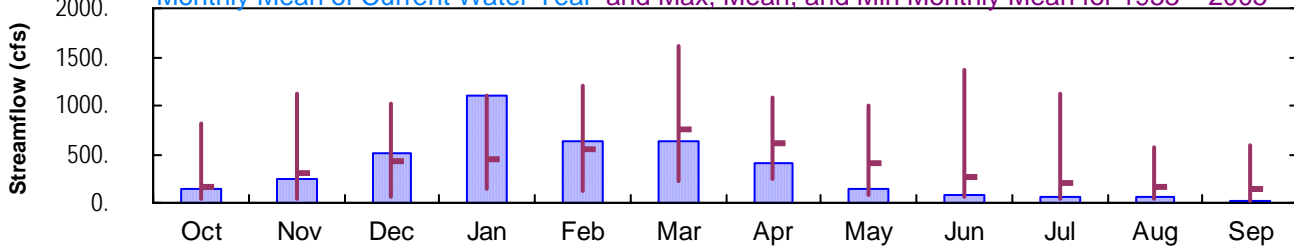
Drainage Area: 192. mi²

Daily Mean Discharge

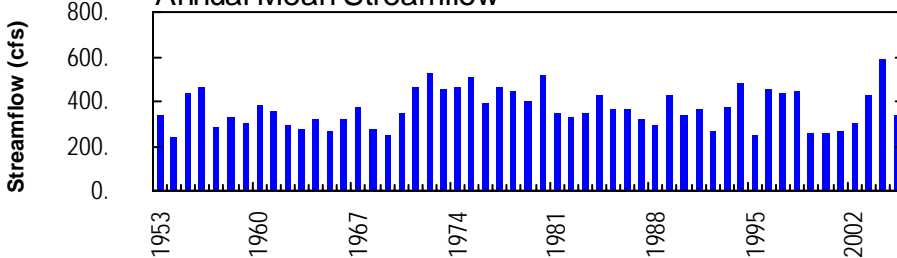


Monthly Statistics

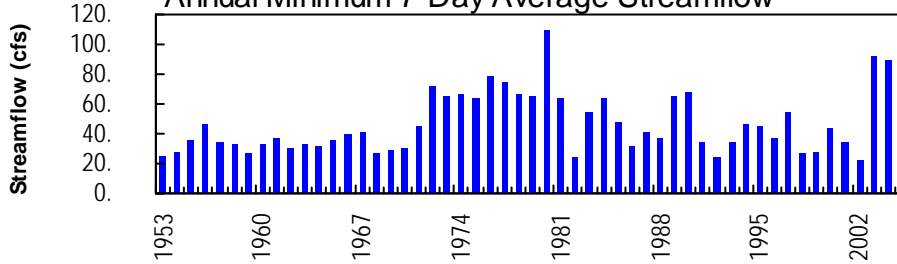
Monthly Mean of Current Water Year and Max, Mean, and Min Monthly Mean for 1953 – 2005



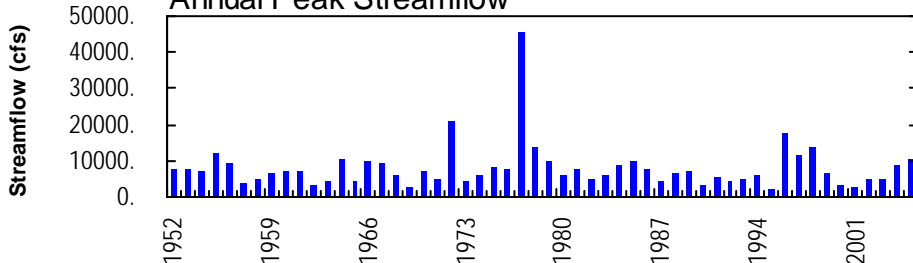
Annual Mean Streamflow



Annual Minimum 7-Day Average Streamflow



Annual Peak Streamflow



KISKIMINETAS RIVER BASIN

03042000 BLACKLICK CREEK AT JOSEPHINE, PA--Continued

SUMMARY STATISTICS	FOR 2004 CALENDAR YEAR		FOR 2005 WATER YEAR		WATER YEARS 1953 - 2005	
ANNUAL TOTAL	192925		123353			
ANNUAL MEAN	527		338		368	
HIGHEST ANNUAL MEAN					587	2004
LOWEST ANNUAL MEAN					242	1954
HIGHEST DAILY MEAN	7140	Jan 5	8750	Jan 6	22800	Jul 20 1977
LOWEST DAILY MEAN	e60	Sep 7	19	Sep 22-25	e15	Oct 13 1995
ANNUAL SEVEN-DAY MINIMUM	a89	Sep 1	20	Sep 20	20	Sep 20 2005
MAXIMUM PEAK FLOW			10600	Jan 6	b45700	Jul 20 1977
MAXIMUM PEAK STAGE			9.13	Jan 6	c19.89	Jul 20 1977
ANNUAL RUNOFF (CFSM)	2.75		1.76		1.92	
ANNUAL RUNOFF (INCHES)	37.38		23.90		26.07	
10 PERCENT EXCEEDS	1060		815		800	
50 PERCENT EXCEEDS	308		158		210	
90 PERCENT EXCEEDS	131		37		52	

a Computed using estimated daily discharges.

b From rating curve extended above 16,000 ft³/s on basis of contracted-opening measurement at gage height 11.35 ft in gage well, 12.67 ft from outside floodmark and slope-area measurement at gage height 10.93 ft.

c From floodmark in gage well.

e Estimated.

