



2005 Water Year
KISKIMINETAS RIVER BASIN
03041500 Conemaugh River at Seward, PA

Latitude: 40° 25 ' 09"

Longitude: 079° 01 ' 35"

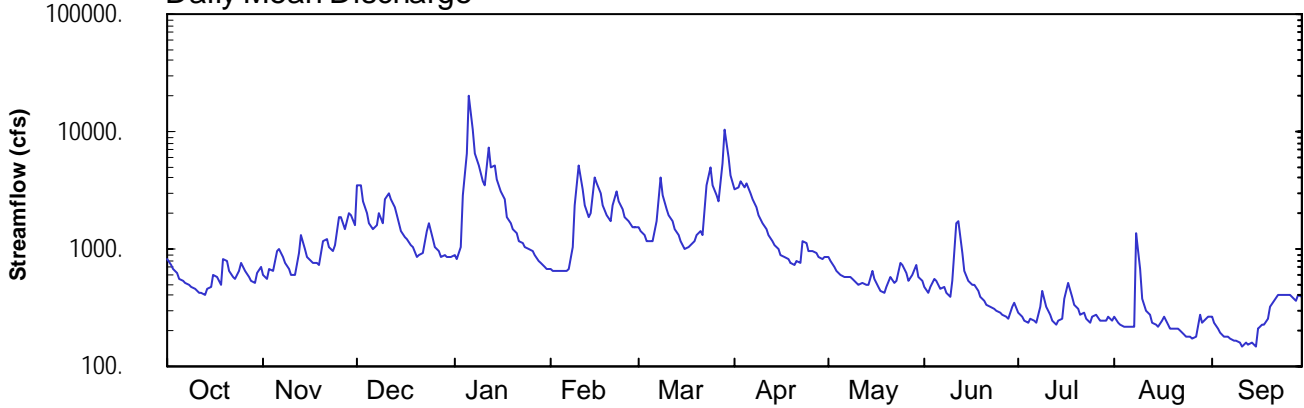
Hydrologic Unit Code: 05010007

Westmoreland County

Datum: 1076.01 feet

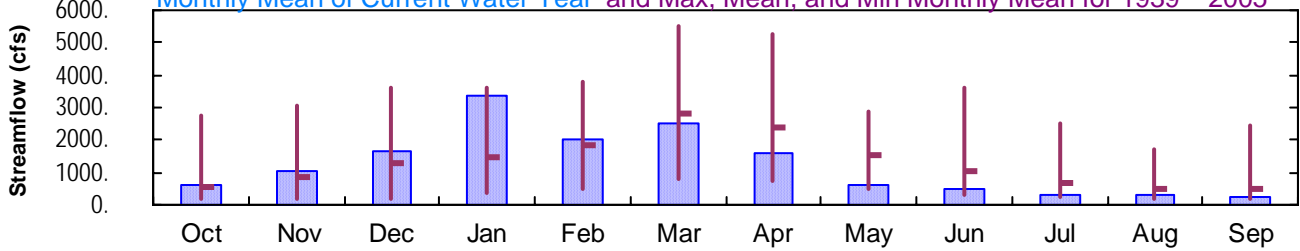
Drainage Area: 715. mi²

Daily Mean Discharge

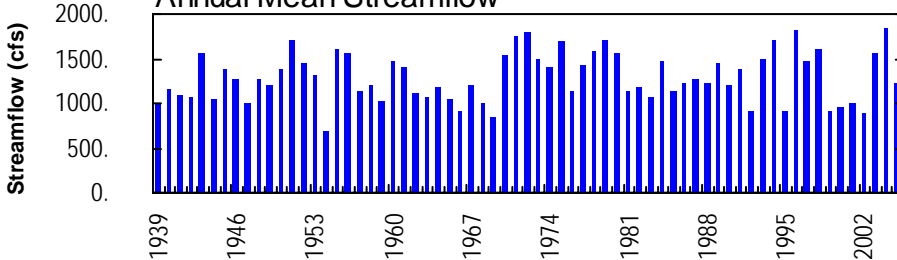


Monthly Statistics

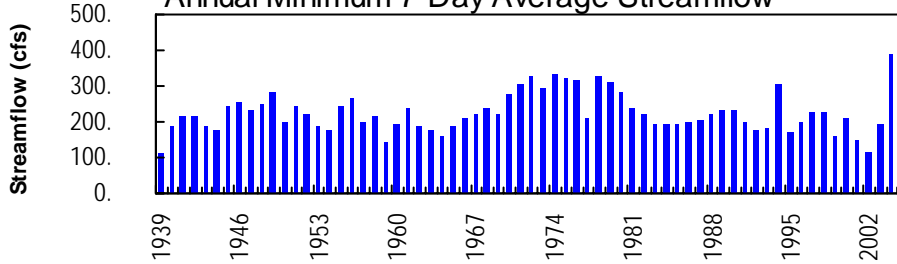
Monthly Mean of Current Water Year and Max, Mean, and Min Monthly Mean for 1939 – 2005



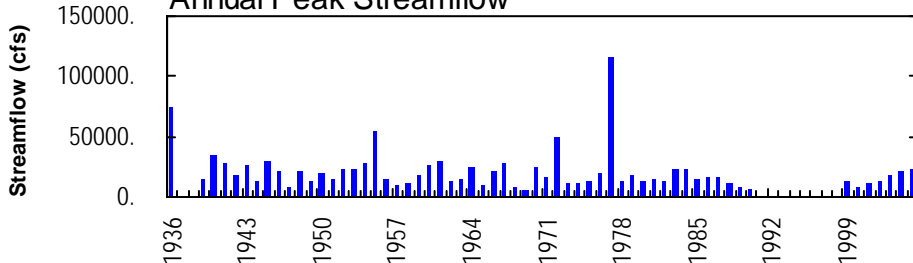
Annual Mean Streamflow



Annual Minimum 7-Day Average Streamflow



Annual Peak Streamflow



KISKIMINETAS RIVER BASIN

03041500 CONEMAUGH RIVER AT SEWARD, PA

LOCATION.--Lat 40°25'09", long 79°01'35", Westmoreland County, Hydrologic Unit 05010007, on left bank at upstream side of bridge on State Highway 56 at Seward, 2.0 mi downstream from Findley Run, and 9 mi northwest of Johnstown.

DRAINAGE AREA.--715 mi².

PERIOD OF RECORD.--May 1938 to current year.

REVISED RECORDS.--WDR PA-78-3: 1936 (M), 1977 (M).

GAGE.--Water-stage recorder. Datum of gage is 1,076.01 ft above National Geodetic Vertical Datum of 1929.

REMARKS.--Records fair except those for estimated daily discharges, which are poor. Flow regulated by steel mills and reservoirs above station; the eight most effective reservoirs have a combined capacity of 51,850 acre-ft. Several measurements of water temperature were made during the year. U.S. Army Corps of Engineers satellite telemetry at station.

EXTREMES OUTSIDE PERIOD OF RECORD.--Flood of Mar. 18, 1936 reached a stage of 26.4 ft, from floodmarks, discharge, about 75,000 ft³/s, by contracted-opening measurement at site 6.7 mi downstream, adjusted for inflow.

DISCHARGE, CUBIC FEET PER SECOND, WATER YEAR OCTOBER 2004 TO SEPTEMBER 2005
DAILY MEAN VALUES

DAY	OCT	NOV	DEC	JAN	FEB	MAR	APR	MAY	JUN	JUL	AUG	SEP
1	825	594	e3480	e880	e675	e1520	3220	869	e480	289	264	265
2	725	558	3490	e810	e660	e1400	3310	779	e430	268	238	239
3	679	683	2570	1040	e655	e1300	3760	704	e470	245	228	213
4	624	645	2030	2870	e650	e1150	3300	652	e550	237	219	191
5	558	974	1680	e6440	e655	e1180	3690	611	e530	255	216	183
6	539	987	1480	e20000	e660	e1190	3040	589	e460	242	216	179
7	516	857	1610	10200	e680	e1750	2600	583	e480	239	217	174
8	495	763	1980	6560	e1060	4100	2290	570	e430	322	e1390	168
9	480	667	1680	5240	e2390	2920	1940	548	e390	441	676	168
10	451	613	2620	3810	5160	2210	1660	517	e540	324	370	161
11	430	592	3030	3460	3210	1910	1460	499	e1650	271	299	150
12	417	935	2620	7300	2330	1730	1290	519	e1730	244	271	158
13	408	1300	2290	4960	1860	1500	1190	489	e930	230	238	155
14	455	1000	1960	5090	2030	1310	1080	489	e660	243	223	159
15	486	858	e1440	3860	4010	1160	988	641	e540	256	220	149
16	608	801	e1260	3050	3640	1010	907	550	e490	e380	241	209
17	577	e760	e1200	2640	2970	1030	851	482	e500	518	262	226
18	493	748	e1080	e1870	2380	1090	817	449	433	396	231	228
19	813	e730	e1060	e1660	1910	1180	773	424	392	333	212	260
20	794	e1160	e860	e1500	1720	1300	745	e470	365	306	207	324
21	652	e1230	e900	e1350	2330	1420	805	e580	337	272	211	368
22	587	e1040	e920	e1190	3160	1320	747	e510	328	281	203	407
23	550	e980	e1440	e1130	2550	3510	1160	e530	316	255	188	404
24	639	1090	e1650	e1040	2140	5030	1140	e750	300	236	178	413
25	759	1860	e1200	e985	1890	3520	971	e730	287	266	177	406
26	649	1850	e1060	e950	e1750	2840	959	e630	276	277	176	415
27	581	1490	e970	e880	e1560	2550	908	e540	269	248	183	388
28	545	2000	e860	e790	e1550	5390	841	e600	258	249	271	358
29	521	1940	e900	e750	---	10400	831	e730	321	247	232	408
30	634	e1610	e870	e710	---	6100	855	e590	348	e265	257	391
31	694	---	e870	e680	---	4190	---	e530	---	e250	261	---
TOTAL	18184	31315	51060	103695	56235	78210	48128	18154	15490	8885	8775	7917
MEAN	587	1044	1647	3345	2008	2523	1604	586	516	287	283	264
MAX	825	2000	3490	20000	5160	10400	3760	869	1730	518	1390	415
MIN	408	558	860	680	650	1010	745	424	258	230	176	149
CFSM	0.82	1.46	2.30	4.68	2.81	3.53	2.24	0.82	0.72	0.40	0.40	0.37
IN.	0.95	1.63	2.66	5.40	2.93	4.07	2.50	0.94	0.81	0.46	0.46	0.41

STATISTICS OF MONTHLY MEAN DATA FOR WATER YEARS 1939 - 2005, BY WATER YEAR (WY)

MEAN	566	880	1300	1470	1834	2793	2395	1546	1045	652	487	516
MAX	2746	3076	3620	3625	3816	5524	5288	2871	3594	2527	1690	2475
(WY)	1977	1986	1973	1952	1971	1994	1993	1960	1972	1977	1979	1996
MIN	169	189	212	389	493	779	739	512	325	242	204	169
(WY)	1964	1939	1999	2000	1993	1990	1946	1941	1999	1965	2002	1959

e Estimated.

KISKIMINETAS RIVER BASIN

03041500 CONEMAUGH RIVER AT SEWARD, PA--Continued

SUMMARY STATISTICS	FOR 2004 CALENDAR YEAR			FOR 2005 WATER YEAR			WATER YEARS 1939 - 2005		
ANNUAL TOTAL	613586			446048			1287		
ANNUAL MEAN	1676			1222			1838		
HIGHEST ANNUAL MEAN							2004		
LOWEST ANNUAL MEAN							1954		
HIGHEST DAILY MEAN	15600	Mar	6	e20000	Jan	6	40900	Jul	20 1977
LOWEST DAILY MEAN	326	Sep	6	149	Sep	15	105	Dec	28 1938a
ANNUAL SEVEN-DAY MINIMUM	388	Sep	1	157	Sep	9	111	Dec	26 1938
MAXIMUM PEAK FLOW				e23800	Jan	6	b115000	Jul	20 1977
MAXIMUM PEAK STAGE				Unknown			c27.06	Jul	20 1977
INSTANTANEOUS LOW FLOW				104	Sep	15	104	Sep	10 2002d
ANNUAL RUNOFF (CFSM)	2.34			1.71			1.80		
ANNUAL RUNOFF (INCHES)	31.92			23.21			24.46		
10 PERCENT EXCEEDS	3330			2890			2860		
50 PERCENT EXCEEDS	999			683			735		
90 PERCENT EXCEEDS	479			237			256		

- a Also Dec. 29, 31, 1938.
- b From rating curve extended above 23,000 ft³/s on basis of slope-area measurement of peak flow.
- c From highwater mark.
- d Also Sept. 15, 2005.
- e Estimated.

