



2005 Water Year  
KISKIMINETAS RIVER BASIN  
03041029 Conemaugh River at Minersville, PA

Latitude: 40° 20 ' 29"

Longitude: 078° 55 ' 34"

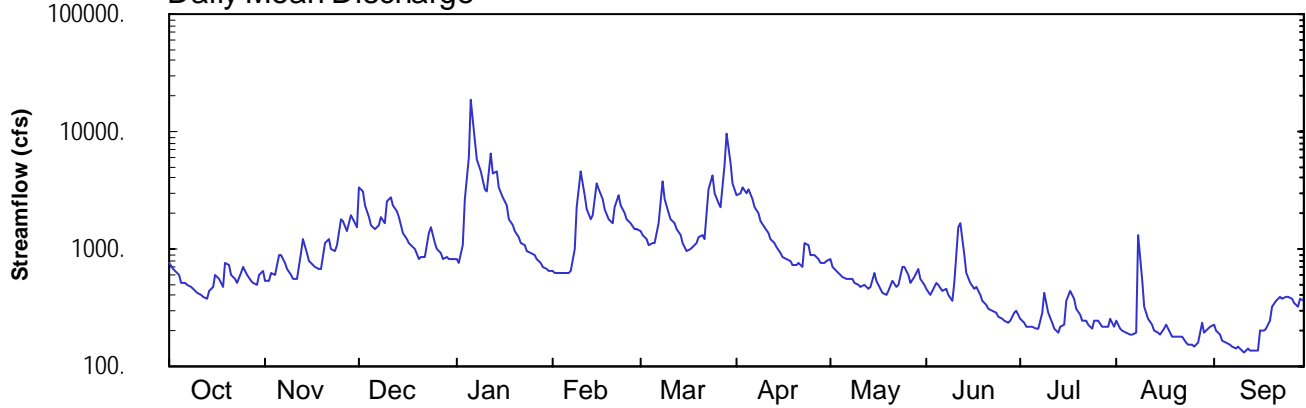
Hydrologic Unit Code: 05010007

Cambria County

Datum: 1140 feet

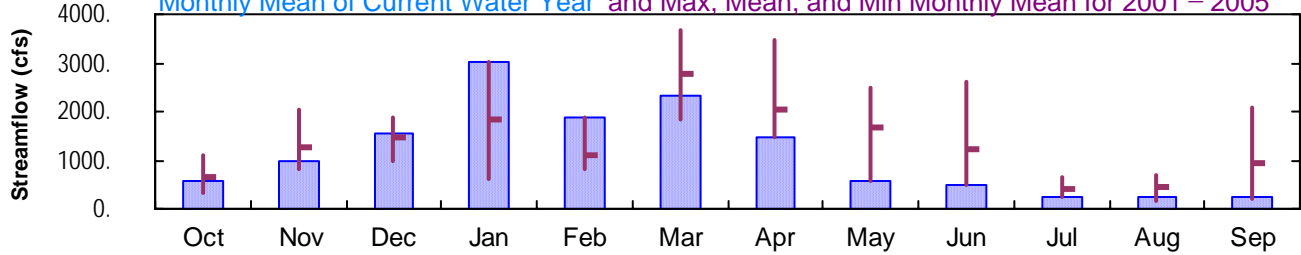
Drainage Area: 678. mi<sup>2</sup>

### Daily Mean Discharge

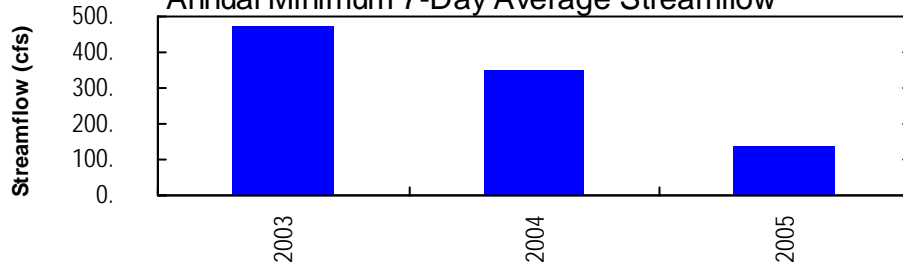


### Monthly Statistics

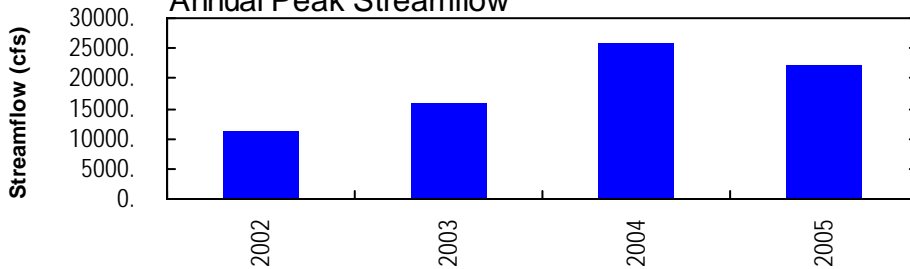
Monthly Mean of Current Water Year and Max, Mean, and Min Monthly Mean for 2001 – 2005



### Annual Minimum 7-Day Average Streamflow



### Annual Peak Streamflow



## KISKIMINETAS RIVER BASIN

## 03041029 CONEMAUGH RIVER AT MINERSVILLE, PA

**LOCATION.**--Lat 40°20'29", long 78°55'34", Cambria County, Hydrologic Unit 05010007, on right bank at upstream side of Fourth Avenue bridge at Minersville, 4,000 ft downstream from confluence of Little Conemaugh River and Stonycreek River.

**DRAINAGE AREA.**--678 mi<sup>2</sup>.

**PERIOD OF RECORD.**--December 2001 to current year.

**GAGE.**--Water-stage recorder. Datum of gage is 1,140 ft above National Geodetic Vertical Datum of 1929.

**REMARKS.**--Records good except those for estimated daily discharges, which are poor. Flow regulated by steel mills and reservoirs above station; the eight most effective reservoirs have a combined capacity of 51,850 acre-ft. Several measurements of water temperature were made during the year. Satellite telemetry at station.

DISCHARGE, CUBIC FEET PER SECOND, WATER YEAR OCTOBER 2004 TO SEPTEMBER 2005  
DAILY MEAN VALUES

| DAY   | OCT   | NOV   | DEC   | JAN    | FEB   | MAR   | APR   | MAY   | JUN   | JUL  | AUG  | SEP  |
|-------|-------|-------|-------|--------|-------|-------|-------|-------|-------|------|------|------|
| 1     | 755   | 545   | 3310  | e830   | e640  | 1440  | 2830  | 808   | 453   | 256  | 245  | 223  |
| 2     | 681   | 530   | 3140  | e770   | e625  | 1330  | 3000  | 715   | 410   | 236  | 209  | 202  |
| 3     | 641   | 621   | 2370  | 1080   | e620  | 1230  | 3320  | 661   | 446   | 216  | 202  | 184  |
| 4     | 592   | 591   | 1900  | 2670   | e615  | 1090  | 2930  | 616   | 518   | 214  | 193  | 164  |
| 5     | 525   | 897   | 1620  | e6130  | e620  | 1120  | 3220  | 575   | 502   | 220  | 189  | 160  |
| 6     | 516   | 891   | 1470  | e19000 | e625  | 1130  | 2660  | 560   | 435   | 213  | 188  | 156  |
| 7     | 491   | 771   | 1600  | 8530   | e640  | 1660  | 2290  | 558   | 451   | 207  | 192  | 149  |
| 8     | 473   | 688   | 1880  | 5680   | 1010  | 3800  | 2040  | 549   | 402   | 283  | 1320 | 145  |
| 9     | 456   | 610   | 1630  | 4510   | 2280  | 2630  | 1750  | 524   | 367   | 420  | 565  | 147  |
| 10    | 425   | 567   | 2520  | 3290   | 4570  | 2040  | 1540  | 495   | 516   | 283  | 318  | 137  |
| 11    | 403   | 549   | 2800  | 3120   | 2870  | 1810  | 1380  | 480   | 1560  | 233  | 256  | 130  |
| 12    | 388   | 935   | 2390  | 6520   | 2150  | 1650  | 1230  | 504   | 1640  | 212  | 225  | 140  |
| 13    | 383   | 1220  | 2100  | 4390   | 1780  | 1460  | 1130  | 466   | 879   | 196  | 201  | 135  |
| 14    | 436   | 923   | 1840  | 4510   | 1950  | 1290  | 1040  | 476   | 629   | 216  | 192  | 136  |
| 15    | 476   | 784   | e1360 | 3390   | 3610  | 1120  | 943   | 620   | 515   | 231  | 186  | 134  |
| 16    | 591   | 736   | e1200 | 2720   | 3260  | 959   | 864   | 527   | 463   | 358  | 211  | 198  |
| 17    | 553   | 697   | e1130 | 2360   | 2690  | 984   | 816   | 462   | 477   | 446  | 224  | 202  |
| 18    | 467   | 687   | e1020 | e1780  | 2200  | 1050  | 779   | 428   | 413   | 376  | 195  | 208  |
| 19    | 760   | 687   | e1000 | e1580  | 1820  | 1150  | 741   | 402   | 369   | 304  | 182  | 249  |
| 20    | 722   | 1130  | e810  | e1420  | 1690  | 1250  | 721   | 446   | 338   | 275  | 179  | 319  |
| 21    | 608   | 1200  | e850  | e1280  | 2280  | 1330  | 748   | 545   | 305   | 245  | 183  | 365  |
| 22    | 546   | 1020  | e870  | e1120  | 2890  | 1230  | 716   | 483   | 300   | 247  | 177  | 394  |
| 23    | 513   | 962   | e1370 | e1070  | 2370  | 3270  | 1140  | 501   | 284   | 225  | 163  | 383  |
| 24    | 616   | 1060  | e1560 | e980   | 2030  | 4260  | 1060  | 709   | 269   | 208  | 154  | 392  |
| 25    | 696   | 1790  | e1140 | e930   | 1820  | 3010  | 886   | 696   | 255   | 245  | 153  | 384  |
| 26    | 594   | 1720  | e1010 | e900   | 1660  | 2470  | 878   | 592   | 244   | 243  | 150  | 381  |
| 27    | 538   | 1430  | e920  | e830   | 1480  | 2290  | 827   | 508   | 237   | 216  | 159  | 349  |
| 28    | 507   | 1940  | e820  | e750   | 1470  | 5060  | 769   | 571   | 246   | 221  | 232  | 322  |
| 29    | 491   | 1820  | e860  | e710   | ---   | 9500  | 757   | 690   | 288   | 220  | 195  | 375  |
| 30    | 610   | 1550  | e820  | e670   | ---   | 5270  | 784   | 558   | 300   | 252  | 209  | 358  |
| 31    | 653   | ---   | e820  | e645   | ---   | 3650  | ---   | 503   | ---   | 220  | 219  | ---  |
| TOTAL | 17106 | 29551 | 48130 | 94165  | 52265 | 71533 | 43789 | 17228 | 14511 | 7937 | 7666 | 7221 |
| MEAN  | 552   | 985   | 1553  | 3038   | 1867  | 2308  | 1460  | 556   | 484   | 256  | 247  | 241  |
| MAX   | 760   | 1940  | 3310  | 19000  | 4570  | 9500  | 3320  | 808   | 1640  | 446  | 1320 | 394  |
| MIN   | 383   | 530   | 810   | 645    | 615   | 959   | 716   | 402   | 237   | 196  | 150  | 130  |

## STATISTICS OF MONTHLY MEAN DATA FOR WATER YEARS 2001 - 2005, BY WATER YEAR (WY)

|      | 2001 | 2002 | 2003 | 2004 | 2005 | 2006 | 2007 | 2008 | 2009 | 2010 | 2011 | 2012 |
|------|------|------|------|------|------|------|------|------|------|------|------|------|
| MEAN | 656  | 1282 | 1479 | 1839 | 1101 | 2769 | 2059 | 1658 | 1214 | 426  | 443  | 959  |
| MAX  | 1101 | 2030 | 1895 | 3038 | 1867 | 3678 | 3489 | 2486 | 2605 | 672  | 688  | 2092 |
| (WY) | 2004 | 2004 | 2004 | 2005 | 2005 | 2004 | 2004 | 2002 | 2003 | 2004 | 2004 | 2004 |
| MIN  | 315  | 829  | 991  | 615  | 828  | 1842 | 1460 | 556  | 484  | 252  | 181  | 210  |
| (WY) | 2003 | 2003 | 2003 | 2002 | 2003 | 2002 | 2005 | 2005 | 2005 | 2002 | 2002 | 2002 |

e Estimated.

## KISKIMINETAS RIVER BASIN

## 03041029 CONEMAUGH RIVER AT MINERSVILLE, PA--Continued

| SUMMARY STATISTICS       | FOR 2004 CALENDAR YEAR |        | FOR 2005 WATER YEAR |        | WATER YEARS 2001 - 2005 |             |
|--------------------------|------------------------|--------|---------------------|--------|-------------------------|-------------|
| ANNUAL TOTAL             | 582526                 |        | 411102              |        |                         |             |
| ANNUAL MEAN              | 1592                   |        | 1126                |        | 1428                    |             |
| HIGHEST ANNUAL MEAN      |                        |        |                     |        | 1753                    |             |
| LOWEST ANNUAL MEAN       |                        |        |                     |        | 1126                    |             |
| HIGHEST DAILY MEAN       | 17400                  | Sep 18 | e19000              | Jan 6  | e19000                  | Jan 6 2005  |
| LOWEST DAILY MEAN        | 285                    | Sep 6  | 130                 | Sep 11 | 127                     | Sep 9 2002  |
| ANNUAL SEVEN-DAY MINIMUM | 349                    | Sep 1  | 137                 | Sep 9  | 128                     | Sep 7 2002  |
| MAXIMUM PEAK FLOW        |                        |        | 22200               | Jan 6  | a25700                  | Sep 18 2004 |
| MAXIMUM PEAK STAGE       |                        |        | b11.55              | Jan 6  | 12.35                   | Sep 18 2004 |
| INSTANTANEOUS LOW FLOW   |                        |        | c89                 | Sep 15 | c89                     | Sep 15 2005 |
| 10 PERCENT EXCEEDS       | 3100                   |        | 2640                |        | 2970                    |             |
| 50 PERCENT EXCEEDS       | 946                    |        | 645                 |        | 878                     |             |
| 90 PERCENT EXCEEDS       | 454                    |        | 205                 |        | 305                     |             |

a From rating curve extended above 22,700 ft<sup>3</sup>/s.

b From outside gage (observed).

c Result of abnormal diversion. Unaffected minimum, 127 ft<sup>3</sup>/s, Sept. 9, 2002.

e Estimated.

