



2005 Water Year
MAHONING CREEK BASIN
03034500 Little Mahoning Creek at McCormick, PA

Latitude: 40° 50' 10"

Longitude: 079° 06' 37"

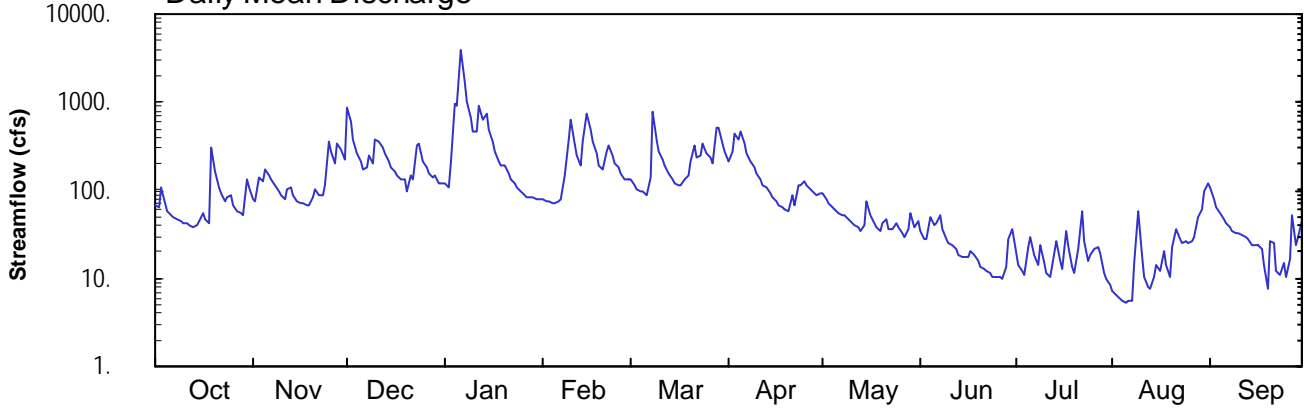
Hydrologic Unit Code: 05010006

Indiana County

Datum: 1164.88 feet

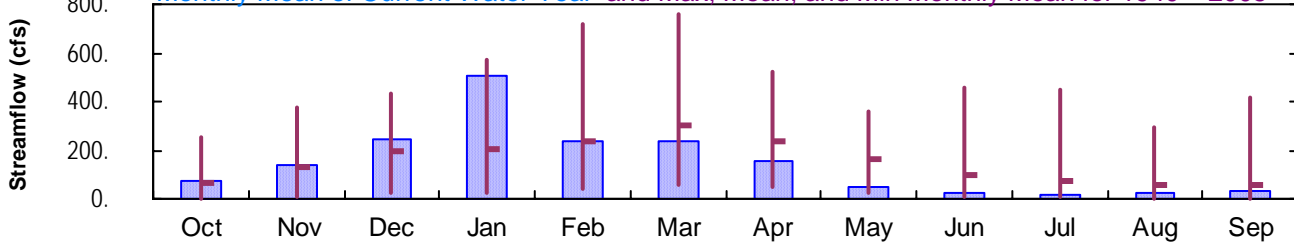
Drainage Area: 87.4 mi²

Daily Mean Discharge

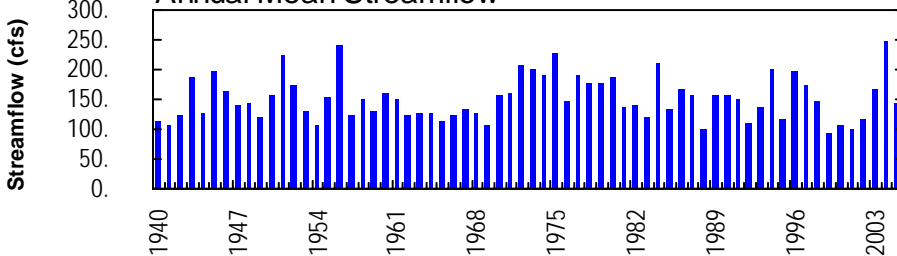


Monthly Statistics

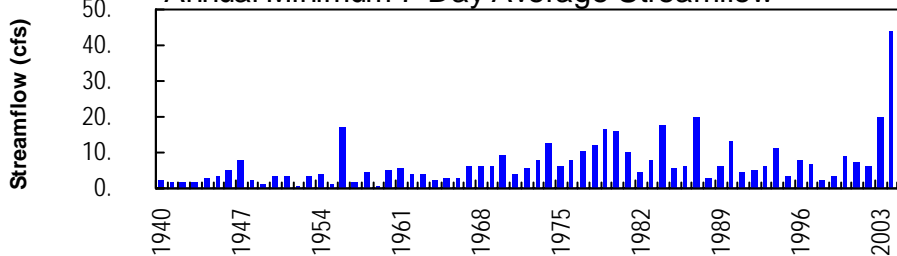
Monthly Mean of Current Water Year and Max, Mean, and Min Monthly Mean for 1940 – 2005



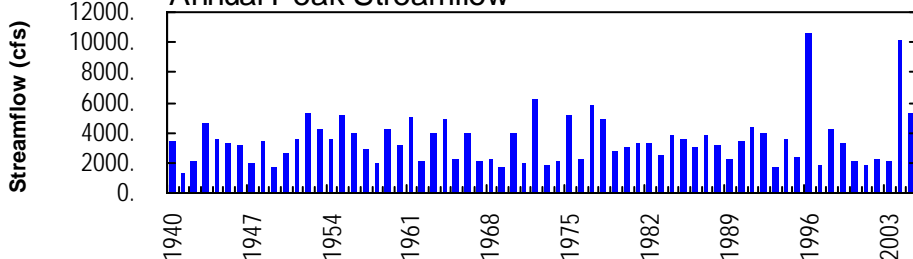
Annual Mean Streamflow



Annual Minimum 7-Day Average Streamflow



Annual Peak Streamflow



MAHONING CREEK BASIN

03034500 LITTLE MAHONING CREEK AT McCORMICK, PA

LOCATION.--Lat 40°50'10", long 79°06'37", Indiana County, Hydrologic Unit 05010006, on left bank 200 ft upstream from bridge on SR 4018 at McCormick, 1 mi west of Georgeville, 1.7 mi upstream from Ross Run, and 4 mi southeast of Smicksburg.

DRAINAGE AREA.--87.4 mi².

PERIOD OF RECORD.--October 1939 to current year.

GAGE.--Water-stage recorder. Datum of gage is 1,164.88 ft above National Geodetic Vertical Datum of 1929 (U.S. Army Corps of Engineers benchmark). Prior to May 10, 1940, nonrecording gage at site 200 ft upstream at same datum.

REMARKS.--Records good except those for estimated daily discharges, which are poor. Several measurements of water temperature were made during the year. U.S. Army Corps of Engineers satellite telemetry at station.

PEAK DISCHARGES FOR CURRENT YEAR.--Peak discharges greater than a base discharge of 2,000 ft³/s and maximum (*):

Date	Time	Discharge ft ³ /s	Gage Height (ft)	Date	Time	Discharge ft ³ /s	Gage Height (ft)
Jan. 6	1600	*5,340	*12.04	No other peak greater than base discharge.			

DISCHARGE, CUBIC FEET PER SECOND, WATER YEAR OCTOBER 2004 TO SEPTEMBER 2005
DAILY MEAN VALUES

DAY	OCT	NOV	DEC	JAN	FEB	MAR	APR	MAY	JUN	JUL	AUG	SEP
1	66	81	869	123	e78	133	216	92	34	19	7.3	106
2	63	73	594	106	e75	117	283	78	28	14	6.6	79
3	108	143	377	205	e74	102	437	71	28	12	5.9	63
4	71	128	265	964	e72	e98	373	65	49	11	5.7	54
5	58	173	209	920	e71	e98	459	59	40	23	5.4	47
6	52	149	175	3910	e77	e90	333	55	42	30	5.6	43
7	49	130	186	1740	e80	e137	263	53	53	18	5.7	38
8	46	112	245	999	e150	764	218	51	36	14	15	34
9	44	97	201	675	e386	381	178	46	29	24	57	32
10	43	87	373	461	e629	270	153	43	25	15	17	33
11	42	81	365	453	337	226	133	41	24	12	10	31
12	39	101	300	896	246	191	114	39	22	10	8.2	29
13	39	109	263	620	192	158	106	34	19	14	7.5	28
14	40	86	215	745	361	134	94	40	17	26	11	24
15	44	77	180	483	750	121	83	76	17	16	14	24
16	55	73	163	354	496	117	75	53	17	13	12	23
17	48	71	149	278	362	113	69	42	20	35	20	21
18	43	69	133	214	257	130	66	38	18	23	15	14
19	302	68	133	195	190	146	61	34	16	13	10	7.8
20	165	82	98	193	170	210	58	43	14	11	23	26
21	110	104	145	155	274	316	87	46	13	21	36	26
22	90	88	136	e135	319	238	68	37	12	59	28	12
23	77	90	317	e122	243	252	116	36	11	27	25	11
24	82	115	332	e109	205	347	116	41	11	15	26	15
25	86	363	210	e96	183	267	125	39	10	19	26	10
26	67	270	182	e89	159	231	114	33	10	21	27	17
27	59	206	154	e84	133	204	101	29	9.7	23	30	51
28	55	348	137	e83	134	515	92	36	13	20	49	24
29	52	290	148	e83	---	503	87	54	28	12	60	29
30	136	228	122	e80	---	347	91	38	37	10	97	44
31	106	---	118	e79	---	269	---	44	---	8.6	118	---
TOTAL	2337	4092	7494	15649	6703	7225	4769	1486	702.7	588.6	783.9	995.8
MEAN	75.4	136	242	505	239	233	159	47.9	23.4	19.0	25.3	33.2
MAX	302	363	869	3910	750	764	459	92	53	59	118	106
MIN	39	68	98	79	71	90	58	29	9.7	8.6	5.4	7.8
CFSM	0.86	1.56	2.77	5.78	2.74	2.67	1.82	0.55	0.27	0.22	0.29	0.38
IN.	0.99	1.74	3.19	6.66	2.85	3.08	2.03	0.63	0.30	0.25	0.33	0.42

STATISTICS OF MONTHLY MEAN DATA FOR WATER YEARS 1940 - 2005, BY WATER YEAR (WY)

MEAN	66.2	133	194	208	236	304	236	164	95.9	72.3	56.4	55.8
MAX	251	378	436	569	715	756	525	358	458	445	294	415
(WY)	1955	1986	1991	1952	1975	1963	1948	1956	1972	1977	1958	2004
MIN	3.39	9.36	21.8	26.2	42.7	59.0	48.7	20.5	9.10	4.71	3.85	2.33
(WY)	1964	1999	1961	1940	1993	1969	1946	1941	1949	1966	1957	1952

e Estimated.

MAHONING CREEK BASIN

03034500 LITTLE MAHONING CREEK AT McCORMICK, PA--Continued

SUMMARY STATISTICS	FOR 2004 CALENDAR YEAR		FOR 2005 WATER YEAR		WATER YEARS 1940 - 2005	
ANNUAL TOTAL	82871		52826.0			
ANNUAL MEAN	226		145		151	
HIGHEST ANNUAL MEAN					246	2004
LOWEST ANNUAL MEAN					92.2	1999
HIGHEST DAILY MEAN	5910	Sep 18	3910	Jan 6	5910	Sep 18 2004
LOWEST DAILY MEAN	33	Sep 7	5.4	Aug 5	0.40	Sep 28 1959
ANNUAL SEVEN-DAY MINIMUM	42	Oct 9	6.0	Aug 1	0.69	Sep 23 1959
MAXIMUM PEAK FLOW			5340	Jan 6	a 10600	Jul 19 1996
MAXIMUM PEAK STAGE			12.04	Jan 6	b 14.46	Jul 19 1996
INSTANTANEOUS LOW FLOW			5.3	Aug 5	0.30	Sep 28 1959
ANNUAL RUNOFF (CFSM)	2.59		1.66		1.73	
ANNUAL RUNOFF (INCHES)	35.27		22.48		23.55	
10 PERCENT EXCEEDS	440		335		356	
50 PERCENT EXCEEDS	120		76		75	
90 PERCENT EXCEEDS	51		14		9.4	

a From rating curve extended above 8,500 ft³/s.

b From peak-stage indicator.

