



2005 Water Year  
CLARION RIVER BASIN  
03028000 West Branch Clarion River at Wilcox, PA

Latitude: 41° 34' 31"

Longitude: 078° 41' 33"

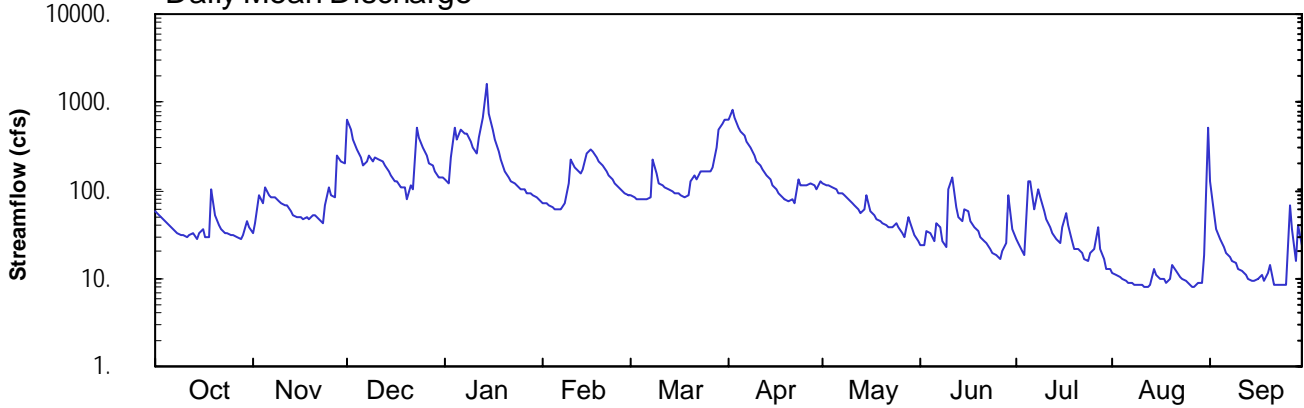
Hydrologic Unit Code: 05010005

Elk County

Datum: 1502.02 feet

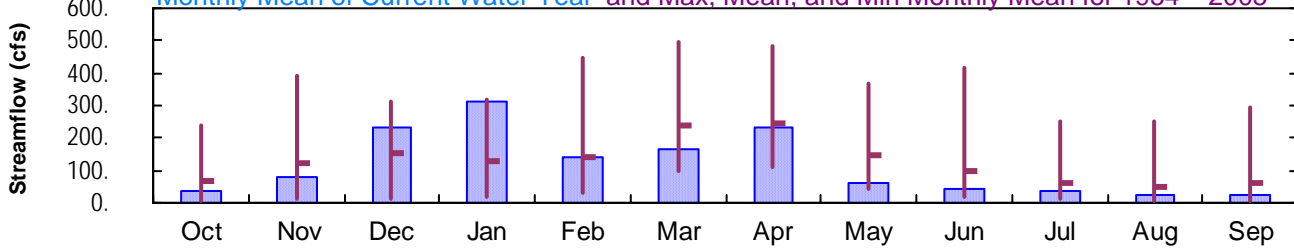
Drainage Area: 63. mi<sup>2</sup>

### Daily Mean Discharge

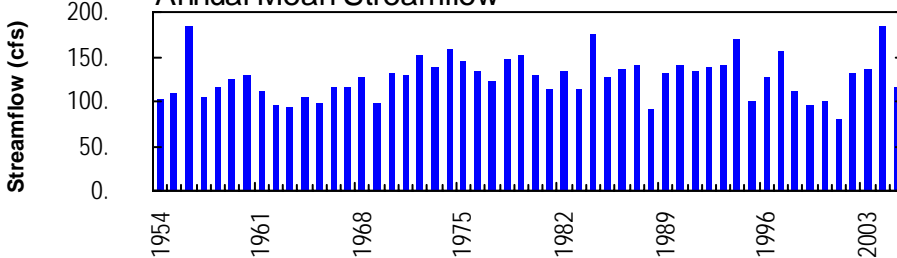


### Monthly Statistics

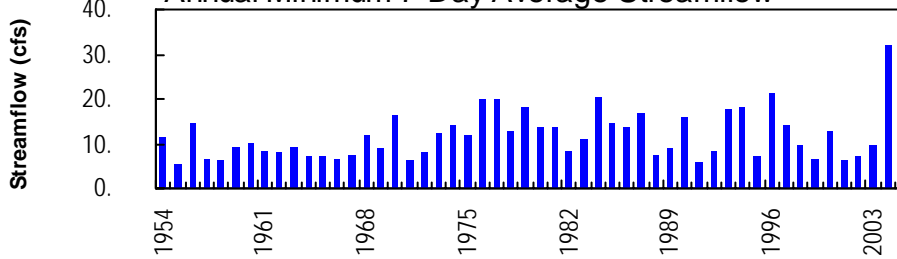
Monthly Mean of Current Water Year and Max, Mean, and Min Monthly Mean for 1954 – 2005



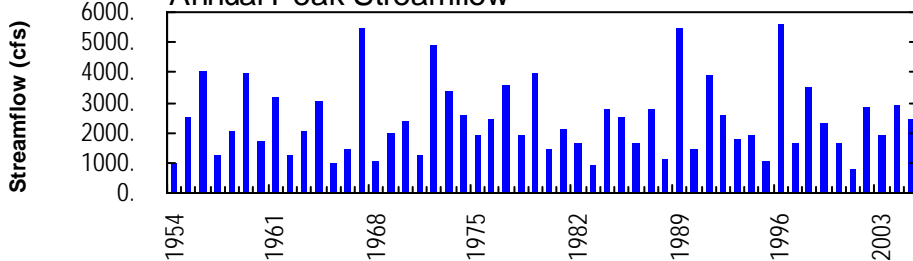
### Annual Mean Streamflow



### Annual Minimum 7-Day Average Streamflow



### Annual Peak Streamflow



## CLARION RIVER BASIN

## 03028000 WEST BRANCH CLARION RIVER AT WILCOX, PA

**LOCATION.**--Lat 41°34'31", long 78°41'33", Elk County, Hydrologic Unit 05010005, on right bank 20 ft downstream from bridge on Township Route 359 at Wilcox, 100 ft downstream from Wilson Run, and 0.1 mi upstream from Penn Central Railroad bridge.

**DRAINAGE AREA.**--63.0 mi<sup>2</sup>.

**PERIOD OF RECORD.**--October 1953 to current year.

**GAGE.**--Water-stage recorder. Datum of gage is 1,502.02 ft above National Geodetic Vertical Datum of 1929. Prior to Nov. 18, 1953, nonrecording gage at site 20 ft upstream at same datum. Nov. 18 to Dec. 8, 1953, nonrecording gage at same site and datum.

**REMARKS.**--Records good except those for estimated daily discharges, which are poor. Several measurements of water temperature were made during the year. U.S. Army Corps of Engineers satellite telemetry at station.

**PEAK DISCHARGES FOR CURRENT YEAR.**--Peak discharges greater than a base discharge of 1,000 ft<sup>3</sup>/s and maximum (\*):

Date	Time	Discharge ft <sup>3</sup> /s	Gage Height (ft)	Date	Time	Discharge ft <sup>3</sup> /s	Gage Height (ft)
Dec. 1	1200	1,140	4.41	Apr. 2	1400	1,190	4.48
Dec. 23	1600	1,140	4.41	Aug. 31	0600	1,240	4.56
Jan. 14	0600	*2,440	*6.26				

DISCHARGE, CUBIC FEET PER SECOND, WATER YEAR OCTOBER 2004 TO SEPTEMBER 2005  
DAILY MEAN VALUES

DAY	OCT	NOV	DEC	JAN	FEB	MAR	APR	MAY	JUN	JUL	AUG	SEP
1	58	33	641	136	e73	e86	647	122	24	29	12	126
2	53	41	498	121	e71	e82	827	116	24	25	11	55
3	49	87	386	240	e68	e78	660	116	34	21	10	36
4	45	71	294	510	e63	e78	528	109	33	19	10	28
5	42	106	236	387	e60	e78	465	102	27	128	9.5	23
6	39	89	196	492	e60	e78	410	94	42	125	8.9	19
7	36	85	215	446	e60	e82	361	91	39	62	e8.9	17
8	33	82	254	434	e72	218	306	87	26	101	e8.6	16
9	32	77	212	365	e119	156	253	80	23	82	e8.5	15
10	31	71	240	305	221	e121	217	71	101	56	e8.2	13
11	29	68	227	264	180	e115	193	67	142	46	e8.1	12
12	30	66	210	402	177	e108	169	60	66	39	e8.2	11
13	32	59	193	678	159	e102	149	54	49	32	e8.3	10
14	27	53	164	1580	172	e97	131	60	44	28	e13	9.5
15	32	50	146	727	263	e92	114	86	60	26	e11	9.3
16	36	49	129	487	294	93	105	58	59	39	e9.9	10
17	30	48	123	369	271	88	93	51	45	56	e9.7	11
18	30	48	110	278	241	85	85	48	39	40	e8.8	9.4
19	102	46	106	e222	215	88	78	44	34	27	e10	12
20	53	52	77	e165	195	127	75	41	29	21	e14	14
21	41	51	116	e141	e164	152	81	40	27	21	e12	e8.6
22	36	46	101	e127	e149	130	71	38	25	20	e11	e8.3
23	33	43	508	e119	e133	162	136	39	22	17	e9.9	e8.6
24	33	66	404	e111	e119	163	113	41	20	16	e9.3	e8.5
25	32	108	312	e104	e109	161	114	38	18	19	e8.8	e8.3
26	31	86	254	e100	e101	164	112	32	16	22	e8.1	67
27	29	82	200	e94	e94	178	119	29	21	38	e8.0	35
28	28	245	190	e91	e89	302	112	49	25	22	e8.8	15
29	31	207	162	e87	---	482	100	42	89	16	e9.1	39
30	44	197	137	e84	---	574	125	31	37	13	19	23
31	37	---	140	e78	---	646	---	26	---	13	509	---
TOTAL	1194	2412	7181	9744	3992	5166	6949	1962	1240	1219	809.6	677.5
MEAN	38.5	80.4	232	314	143	167	232	63.3	41.3	39.3	26.1	22.6
MAX	102	245	641	1580	294	646	827	122	142	128	509	126
MIN	27	33	77	78	60	78	71	26	16	13	8.0	8.3
CFSM	0.61	1.28	3.68	4.99	2.26	2.65	3.68	1.00	0.66	0.62	0.41	0.36
IN.	0.71	1.42	4.24	5.75	2.36	3.05	4.10	1.16	0.73	0.72	0.48	0.40

STATISTICS OF MONTHLY MEAN DATA FOR WATER YEARS 1954 - 2005, BY WATER YEAR (WY)

MEAN	69.8	125	154	132	143	241	246	145	95.5	58.4	51.4	58.7
MAX	236	390	311	319	448	494	483	369	417	252	249	294
(WY)	1982	1986	1978	1998	1976	1964	1970	2002	1972	1992	1956	2004
MIN	7.60	12.9	12.4	18.5	27.6	96.4	109	40.9	20.4	12.3	8.30	7.68
(WY)	1964	1965	1961	1961	1987	1969	1976	1985	1991	1955	1991	1955

e Estimated.

## CLARION RIVER BASIN

## 03028000 WEST BRANCH CLARION RIVER AT WILCOX, PA--Continued

SUMMARY STATISTICS	FOR 2004 CALENDAR YEAR		FOR 2005 WATER YEAR		WATER YEARS 1954 - 2005	
ANNUAL TOTAL	61066		42546.1			
ANNUAL MEAN	167		117		126	
HIGHEST ANNUAL MEAN					184	1956 <sup>a</sup>
LOWEST ANNUAL MEAN					80.4	2001
HIGHEST DAILY MEAN	1720	Sep 9	1580	Jan 14	2870	Jun 23 1972
LOWEST DAILY MEAN	27	Sep 6,7	<sup>e</sup> 8.0	Aug 27	4.5	Sep 21 1955
ANNUAL SEVEN-DAY MINIMUM	30	Oct 9	<sup>b</sup> 8.4	Aug 7	5.2	Sep 16 1955
MAXIMUM PEAK FLOW			2440	Jan 14	<sup>c</sup> 5590	Jan 19 1996
MAXIMUM PEAK STAGE			6.26	Jan 14	<sup>d</sup> 10.23	Jan 19 1996
INSTANTANEOUS LOW FLOW			Unknown		4.2	Sep 21 1955
ANNUAL RUNOFF (CFSM)	2.65		1.85		2.01	
ANNUAL RUNOFF (INCHES)	36.06		25.12		27.26	
10 PERCENT EXCEEDS	356		267		288	
50 PERCENT EXCEEDS	108		68		75	
90 PERCENT EXCEEDS	39		11		15	

<sup>a</sup> Also 2004.

<sup>b</sup> Computed using estimated daily discharges.

<sup>c</sup> From rating curve extended above 3,000 ft<sup>3</sup>/s.

<sup>d</sup> From peak-stage indicator.

<sup>e</sup> Estimated.

