



2005 Water Year  
CLARION RIVER BASIN  
03026500 Sevenmile Run near Rasselas, PA

Latitude: 41° 37' 52"

Longitude: 078° 34' 37"

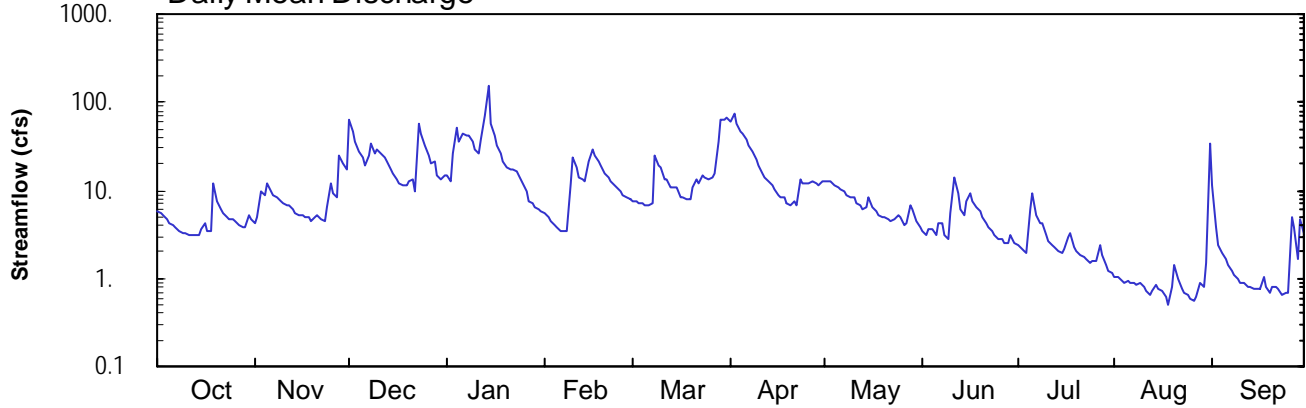
Hydrologic Unit Code: 05010005

Mckean County

Datum: 1690.73 feet

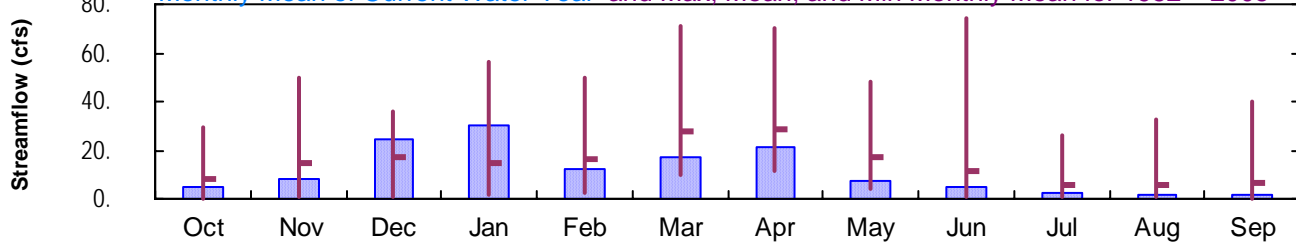
Drainage Area: 7.84 mi<sup>2</sup>

### Daily Mean Discharge

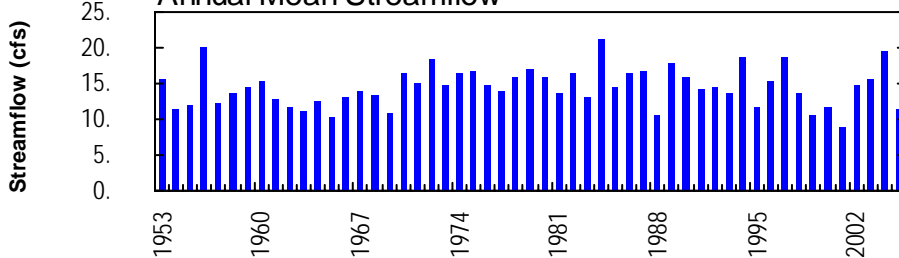


### Monthly Statistics

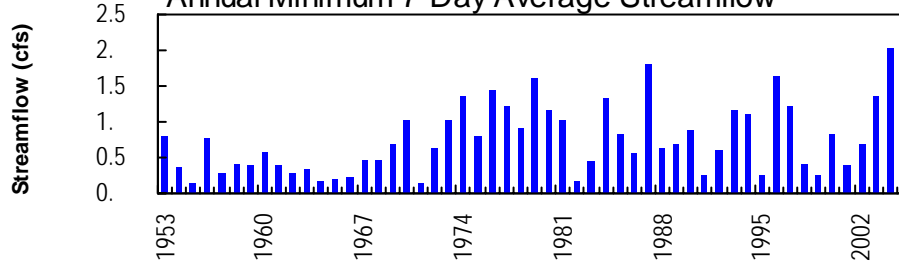
Monthly Mean of Current Water Year and Max, Mean, and Min Monthly Mean for 1952 – 2005



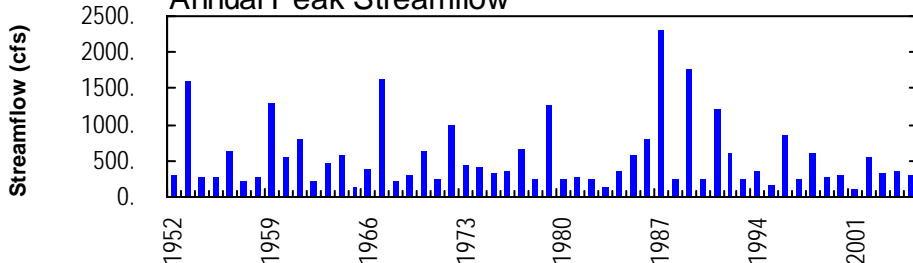
### Annual Mean Streamflow



### Annual Minimum 7-Day Average Streamflow



### Annual Peak Streamflow



## CLARION RIVER BASIN

## 03026500 SEVENMILE RUN NEAR RASSELAS, PA

**LOCATION.**--Lat 41°37'52", long 78°34'37", McKean County, Hydrologic Unit 05010005, on right bank 300 ft upstream from highway bridge, 600 ft upstream from Fivemile Run, and 3.2 mi northeast of Rasselas.

**DRAINAGE AREA.**--7.84 mi<sup>2</sup>.

**PERIOD OF RECORD.**--October 1951 to current year.

**GAGE.**--Water-stage recorder and concrete control. Datum of gage is 1,690.73 ft above National Geodetic Vertical Datum of 1929.

**REMARKS.**--Records good except those for estimated daily discharges, which are poor. Several measurements of water temperature were made during the year. U.S. Army Corps of Engineers satellite telemetry at station.

**PEAK DISCHARGES FOR CURRENT YEAR.**--Peak discharges greater than a base discharge of 200 ft<sup>3</sup>/s and maximum (\*):

Date	Time	Discharge ft <sup>3</sup> /s	Gage Height (ft)	Date	Time	Discharge ft <sup>3</sup> /s	Gage Height (ft)
Jan. 14	0400	*304	*4.17	No other peak greater than base discharge.			

DISCHARGE, CUBIC FEET PER SECOND, WATER YEAR OCTOBER 2004 TO SEPTEMBER 2005  
DAILY MEAN VALUES

DAY	OCT	NOV	DEC	JAN	FEB	MAR	APR	MAY	JUN	JUL	AUG	SEP
1	5.8	4.2	64	14	e5.4	e7.7	62	13	3.5	2.4	1.1	11
2	5.4	4.9	47	13	e4.9	e7.3	73	12	3.1	2.2	1.0	3.8
3	5.1	9.6	36	26	e4.5	e7.1	57	13	3.5	2.0	0.95	2.4
4	4.7	8.7	28	53	e4.1	e7.0	47	12	3.6	1.9	0.89	2.0
5	4.3	12	23	36	e3.8	e6.8	44	11	3.1	6.1	0.92	1.6
6	3.9	9.8	20	45	e3.5	e6.7	38	10	4.2	9.3	0.91	1.4
7	3.7	9.0	24	43	e3.4	e7.1	32	9.6	4.2	5.2	0.91	1.2
8	3.5	8.3	33	41	e3.4	25	27	9.0	3.1	4.2	0.86	1.1
9	3.3	7.7	26	35	e12	19	23	8.3	2.8	4.2	0.87	1.0
10	3.3	7.2	28	29	24	18	19	8.1	5.6	3.0	0.81	0.90
11	3.1	6.8	26	26	18	13	16	7.2	14	2.7	0.72	0.88
12	3.1	6.6	23	38	14	13	14	6.6	9.2	2.4	0.66	0.80
13	3.1	6.0	21	71	13	11	12	6.0	6.0	2.3	0.72	0.81
14	3.1	5.5	17	150	13	11	11	6.6	5.2	2.1	0.82	0.76
15	3.6	5.2	15	58	21	11	10	8.2	7.6	2.0	0.75	0.74
16	4.3	5.1	13	42	28	8.3	8.9	6.3	9.2	2.1	0.71	0.78
17	3.5	4.9	12	33	25	8.3	8.4	5.8	7.4	3.0	0.62	1.0
18	3.4	4.8	11	26	21	8.0	8.1	5.3	6.3	3.3	0.50	0.82
19	12	4.6	11	e21	19	7.9	7.1	5.0	5.7	2.3	0.81	0.70
20	7.6	5.0	13	e18	15	11	6.9	4.8	5.0	2.0	1.5	0.78
21	5.9	5.2	13	e18	e14	13	7.7	4.7	4.3	1.8	0.97	0.79
22	5.4	4.7	9.7	e17	e13	12	6.8	4.6	3.9	1.8	0.77	0.78
23	4.9	4.4	59	e16	e12	15	14	4.8	3.5	1.7	0.68	0.65
24	4.8	6.4	45	e14	e11	14	12	5.3	3.1	1.5	0.66	0.67
25	4.7	12	33	e12	e9.8	13	12	4.8	2.8	1.6	0.59	0.68
26	4.4	9.1	25	e9.8	e9.0	14	12	4.1	2.7	1.6	0.56	5.0
27	4.1	8.1	20	e7.5	e8.4	16	12	4.3	2.5	2.3	0.61	3.8
28	3.7	25	21	e7.0	e8.0	36	12	6.9	2.5	1.8	0.91	1.6
29	3.8	21	15	e6.5	---	63	11	6.0	3.2	1.4	0.79	4.8
30	5.2	17	13	e6.0	---	63	13	4.5	2.5	1.2	1.5	3.2
31	4.7	---	15	e5.9	---	68	---	3.9	---	1.2	33	---
TOTAL	141.4	248.8	759.7	937.7	341.2	541.2	636.9	221.7	143.3	82.6	58.07	56.44
MEAN	4.56	8.29	24.5	30.2	12.2	17.5	21.2	7.15	4.78	2.66	1.87	1.88
MAX	12	25	64	150	28	68	73	13	14	9.3	33	11
MIN	3.1	4.2	9.7	5.9	3.4	6.7	6.8	3.9	2.5	1.2	0.50	0.65
CFSM	0.58	1.06	3.13	3.86	1.55	2.23	2.71	0.91	0.61	0.34	0.24	0.24
IN.	0.67	1.18	3.60	4.45	1.62	2.57	3.02	1.05	0.68	0.39	0.28	0.27

STATISTICS OF MONTHLY MEAN DATA FOR WATER YEARS 1952 - 2005, BY WATER YEAR (WY)

	7.94	14.3	17.3	15.0	16.5	28.1	28.5	17.4	11.7	5.54	5.50	6.43
MEAN	7.94	14.3	17.3	15.0	16.5	28.1	28.5	17.4	11.7	5.54	5.50	6.43
MAX	29.7	49.5	35.9	56.4	49.9	70.8	70.6	47.8	74.0	26.0	32.8	39.7
(WY)	1971	1986	1978	1952	1976	1964	1970	1953	1989	1992	1956	1987
MIN	0.32	0.66	0.94	1.55	2.22	9.85	11.2	4.05	1.14	0.50	0.52	0.28
(WY)	1965	1965	1961	1961	1987	1993	1976	1985	1991	1991	1966	1964

e Estimated.

## CLARION RIVER BASIN

## 03026500 SEVENMILE RUN NEAR RASSELAS, PA--Continued

SUMMARY STATISTICS	FOR 2004 CALENDAR YEAR		FOR 2005 WATER YEAR		WATER YEARS 1952 - 2005	
ANNUAL TOTAL	6428.1		4169.01			
ANNUAL MEAN	17.6		11.4		14.5	
HIGHEST ANNUAL MEAN					21.1	1984
LOWEST ANNUAL MEAN					8.92	2001
HIGHEST DAILY MEAN	182	Sep 9	150	Jan 14	465	Jun 20 1989
LOWEST DAILY MEAN	1.4	Jul 11	0.50	Aug 18	0.07	Sep 21 1955
ANNUAL SEVEN-DAY MINIMUM	2.0	Jul 5	0.68	Aug 12	0.14	Sep 16 1955
MAXIMUM PEAK FLOW			304	Jan 14	a2300	Sep 13 1987
MAXIMUM PEAK STAGE			4.17	Jan 14	5.30	Sep 13 1987
INSTANTANEOUS LOW FLOW			0.35	Aug 25	0.07	Sep 21 1955
ANNUAL RUNOFF (CFSM)	2.24		1.46		1.84	
ANNUAL RUNOFF (INCHES)	30.50		19.78		25.06	
10 PERCENT EXCEEDS	37		26		32	
50 PERCENT EXCEEDS	11		6.4		8.2	
90 PERCENT EXCEEDS	3.7		0.91		1.0	

a From rating curve extended above 600 ft<sup>3</sup>/s on basis of slope-area measurement at gage height 4.60 ft and contracted-opening measurement at gage height 5.02 ft.

