



2005 Water Year
FRENCH CREEK BASIN
03024000 French Creek at Utica, PA

Latitude: 41° 26 ' 15"

Longitude: 079° 57 ' 22"

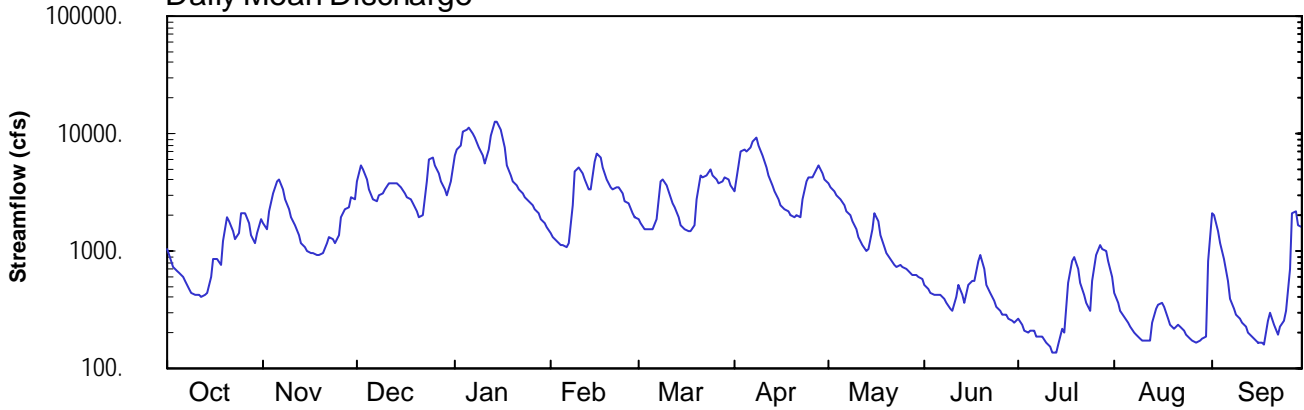
Hydrologic Unit Code: 05010004

Venango County

Datum: 1019.44 feet

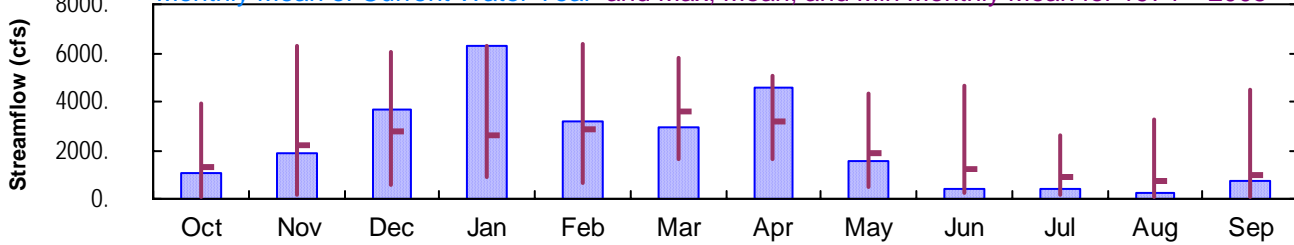
Drainage Area: 1028. mi²

Daily Mean Discharge

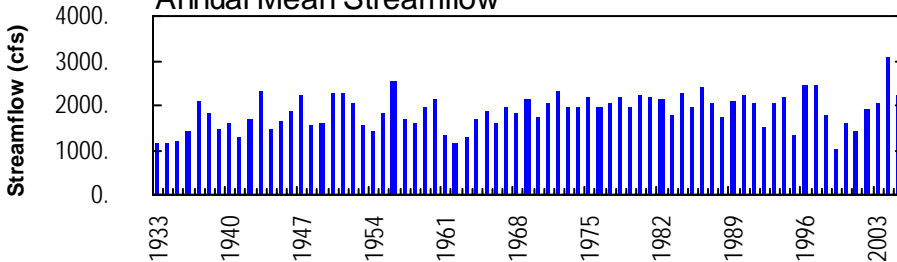


Monthly Statistics

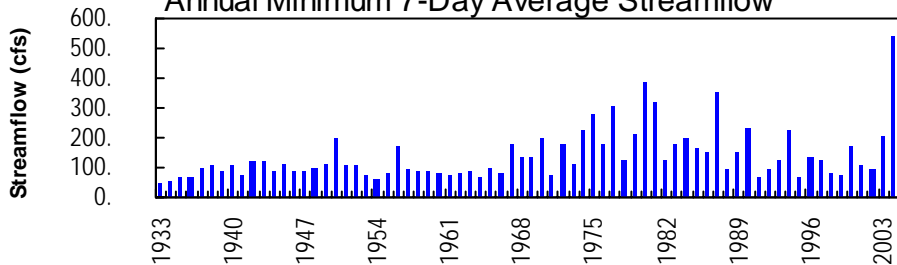
Monthly Mean of Current Water Year and Max, Mean, and Min Monthly Mean for 1974 – 2005



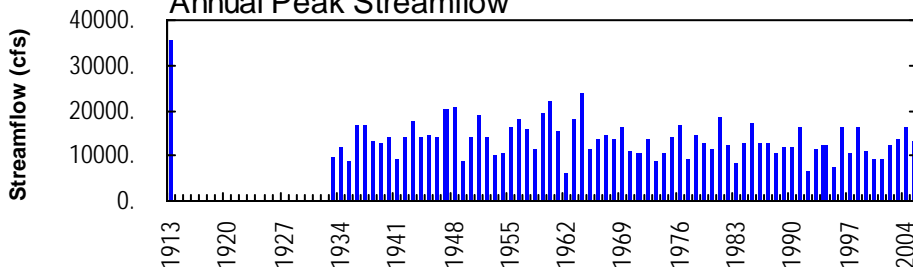
Annual Mean Streamflow



Annual Minimum 7-Day Average Streamflow



Annual Peak Streamflow



FRENCH CREEK BASIN

03024000 FRENCH CREEK AT UTICA, PA

LOCATION.--Lat 41°26'15", long 79°57'22", Venango County, Hydrologic Unit 05010004, on right bank at downstream side of bridge on SR 3017 at Utica and 2,000 ft upstream from Mill Creek.

DRAINAGE AREA.--1,028 mi².

PERIOD OF RECORD.--August 1932 to current year.

REVISED RECORDS.--WSP 743: Drainage area. WSP 823: 1936 (M). WSP 1275: 1933, 1936.

GAGE.--Water-stage recorder. Datum of gage is 1,019.44 ft above National Geodetic Vertical Datum of 1929. Prior to Nov. 27, 1933, nonrecording gage at same site and datum. Nov. 27, 1933 to Nov. 29, 2001, water-stage recorder at same site and datum. From Nov. 29, 2001, water-stage recorder 120 ft downstream at same datum.

REMARKS.--Records good except those for estimated daily discharges, which are poor. Flow regulated since July 1970 by Union City Reservoir (station 03021518) 50 mi upstream, serving as a retarding basin, and since January 1974 by Woodcock Creek Lake (station 03022550), 25 mi upstream. Several measurements of water temperature were made during the year. U.S. Army Corps of Engineers satellite telemetry at station.

EXTREMES OUTSIDE PERIOD OF RECORD.--Maximum stage since at least 1912, 15.7 ft in March 1913, discharge about 36,000 ft³/s.

DISCHARGE, CUBIC FEET PER SECOND, WATER YEAR OCTOBER 2004 TO SEPTEMBER 2005
DAILY MEAN VALUES

DAY	OCT	NOV	DEC	JAN	FEB	MAR	APR	MAY	JUN	JUL	AUG	SEP
1	1060	1720	3900	6400	e1430	1840	3280	3810	521	268	445	2060
2	813	1510	5350	7310	e1310	1700	5380	3490	483	241	369	2000
3	729	2220	4930	7840	e1210	1540	7010	3220	441	213	316	1460
4	687	3070	4120	10300	e1140	1540	7270	3030	419	200	279	1190
5	648	3900	3390	10700	e1110	1540	7150	2740	423	208	246	871
6	599	4080	2810	11300	e1090	1530	7720	2460	416	211	226	566
7	559	3420	2660	9970	e1150	1850	8700	2220	387	189	206	392
8	483	2770	2940	9270	2430	3850	9090	2030	359	184	191	324
9	447	2300	3050	7740	4720	4130	8010	1820	329	188	180	291
10	430	1960	3290	6400	5100	3570	6510	1570	309	165	172	260
11	418	1640	3710	5600	4560	3180	5240	1300	409	155	171	247
12	407	1380	3820	7460	4000	2590	4330	1130	518	137	172	226
13	427	1190	3800	9700	3330	2360	3660	992	422	138	241	199
14	444	1080	3710	12500	3350	1950	3170	1030	364	159	325	186
15	591	1000	3420	12600	5820	1690	2780	1550	510	220	343	175
16	860	964	3110	10800	6720	1520	2480	2110	546	202	368	167
17	866	973	2920	7610	6380	1460	2280	1770	567	543	332	165
18	755	942	2710	5370	5110	1490	2170	1370	834	808	270	160
19	1200	936	2550	4430	4040	1670	2060	1090	941	891	234	253
20	1930	974	2220	3970	3440	2730	1970	945	703	713	219	296
21	1830	1160	1920	3590	3330	4420	2030	841	519	530	235	237
22	1510	1330	2040	3330	3540	4290	1980	752	433	418	227	196
23	1240	1280	3920	3090	3440	4480	2720	734	383	358	213	228
24	1420	1180	6090	e2860	3080	4900	3970	749	341	313	197	253
25	2130	1390	6180	e2670	2660	4400	4180	719	313	554	181	311
26	2130	1980	5280	e2480	2530	4040	4280	705	290	942	170	715
27	1760	2270	4650	e2300	2100	3830	4900	666	291	1130	163	2080
28	1390	2360	3970	e2070	1920	3960	5280	630	263	1050	170	2200
29	1180	2850	3370	e1870	---	4280	4580	625	251	987	183	1670
30	1440	2710	2940	e1760	---	4060	4040	598	241	838	187	1630
31	1850	---	3890	e1590	---	3630	---	571	---	592	823	---
TOTAL	32233	56539	112660	194880	90040	90020	138220	47267	13226	13745	8054	21008
MEAN	1040	1885	3634	6286	3216	2904	4607	1525	441	443	260	700
MAX	2130	4080	6180	12600	6720	4900	9090	3810	941	1130	823	2200
MIN	407	936	1920	1590	1090	1460	1970	571	241	137	163	160
CFSM	1.01	1.83	3.54	6.12	3.13	2.82	4.48	1.48	0.43	0.43	0.25	0.68
IN.	1.17	2.05	4.08	7.05	3.26	3.26	5.00	1.71	0.48	0.50	0.29	0.76

e Estimated.

FRENCH CREEK BASIN

03024000 FRENCH CREEK AT UTICA, PA--Continued

STATISTICS OF MONTHLY MEAN DATA FOR WATER YEARS 1974 - 2005, BY WATER YEAR (WY) (SINCE REGULATION)

	OCT	NOV	DEC	JAN	FEB	MAR	APR	MAY	JUN	JUL	AUG	SEP
MEAN	1276	2220	2800	2621	2878	3580	3150	1850	1255	858	733	1015
MAX (WY)	3954	6309	6029	6286	6394	5778	5101	4326	4659	2629	3297	4504
MIN (WY)	1991	1986	1978	2005	1976	1977	1994	2004	1986	1987	1980	2004
MIN (WY)	121	176	583	869	629	1622	1655	452	209	192	112	71.7
(WY)	1992	1992	1999	1977	1987	2000	1976	1985	1991	1995	1991	1995

SUMMARY STATISTICS FOR 2004 CALENDAR YEAR FOR 2005 WATER YEAR WATER YEARS 1974 - 2005

ANNUAL TOTAL	1035103	817892	
ANNUAL MEAN	2828	2241	2014
HIGHEST ANNUAL MEAN			3065
LOWEST ANNUAL MEAN			1044
HIGHEST DAILY MEAN	15300	Sep 11	12600
LOWEST DAILY MEAN	406	Sep 7	137
ANNUAL SEVEN-DAY MINIMUM	437	Oct 8	161
MAXIMUM PEAK FLOW			13100
MAXIMUM PEAK STAGE			9.78
ANNUAL RUNOFF (CFSM)	2.75		2.18
ANNUAL RUNOFF (INCHES)	37.46		29.60
10 PERCENT EXCEEDS	5610	5160	4530
50 PERCENT EXCEEDS	2180	1510	1380
90 PERCENT EXCEEDS	702	224	238

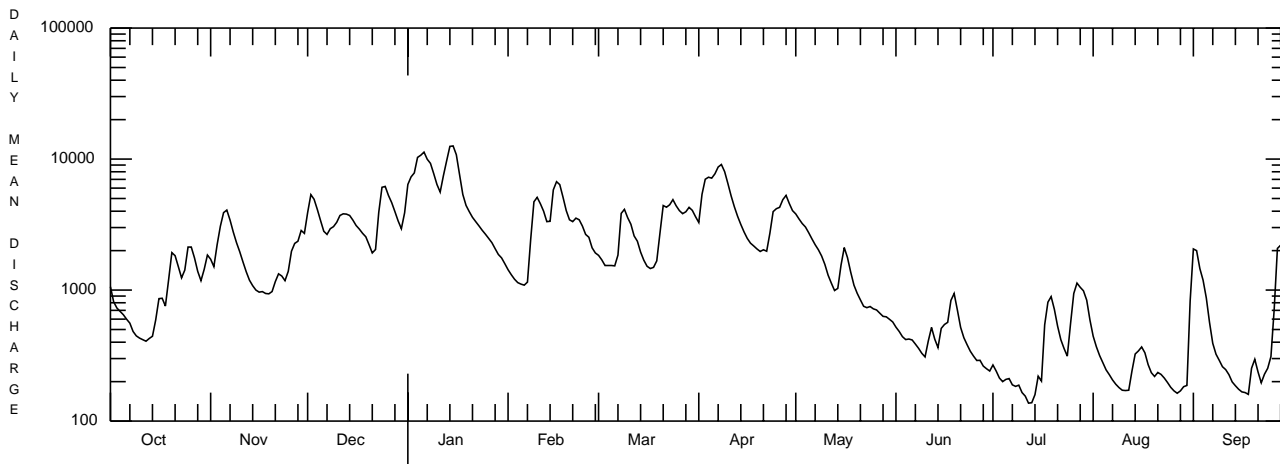
STATISTICS OF MONTHLY MEAN DATA FOR WATER YEARS 1933 - 1973, BY WATER YEAR (WY) (PRIOR TO REGULATION)

	OCT	NOV	DEC	JAN	FEB	MAR	APR	MAY	JUN	JUL	AUG	SEP
MEAN	695	1506	2238	2590	2713	3915	3147	1684	953	555	408	440
MAX (WY)	3744	3983	4471	7284	5894	7359	6688	4160	3717	2015	1907	2148
MIN (WY)	1946	1971	1951	1937	1938	1964	1947	1956	1947	1967	1956	1958
MIN (WY)	69.5	183	227	403	523	1768	575	349	124	77.1	77.8	80.4
(WY)	1964	1954	1961	1961	1934	1937	1946	1934	1934	1934	1954	1954

SUMMARY STATISTICS WATER YEARS 1933 - 1973

ANNUAL MEAN	1751
HIGHEST ANNUAL MEAN	2539
LOWEST ANNUAL MEAN	1146
HIGHEST DAILY MEAN	23000
LOWEST DAILY MEAN	45
ANNUAL SEVEN-DAY MINIMUM	48
MAXIMUM PEAK FLOW	a23800
MAXIMUM PEAK STAGE	b13.2
INSTANTANEOUS LOW FLOW	43
ANNUAL RUNOFF (CFSM)	1.70
ANNUAL RUNOFF (INCHES)	23.15
10 PERCENT EXCEEDS	4370
50 PERCENT EXCEEDS	940
90 PERCENT EXCEEDS	147

a From rating curve extended above 20,700 ft³/s.
 b From floodmark in gage well.



OCTOBER 1, 2004 TO SEPTEMBER 30, 2005