



2005 Water Year  
OSWAYO CREEK BASIN  
03010655 Oswayo Creek at Shinglehouse, PA

Latitude: 41° 57' 42"

Longitude: 078° 11' 54"

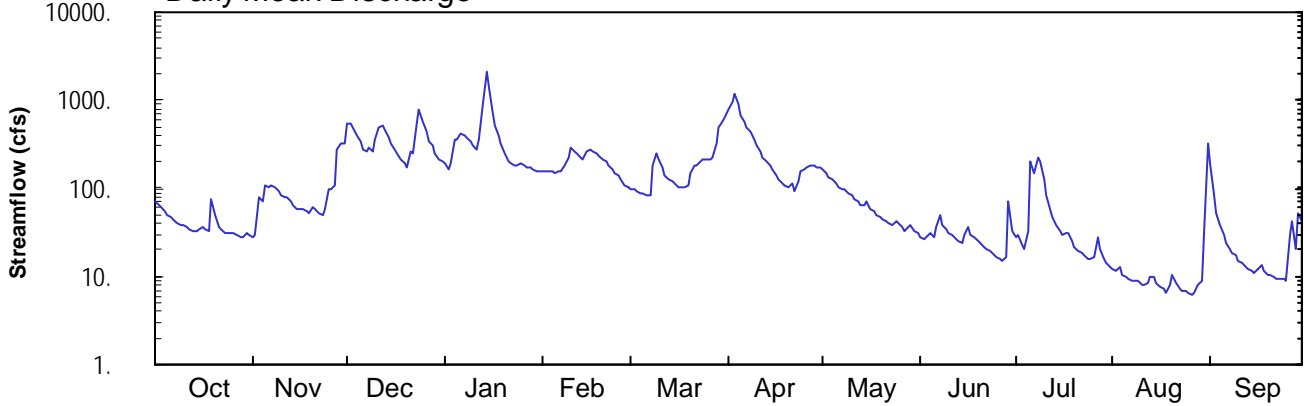
Hydrologic Unit Code: 05010001

Potter County

Datum: 1460.34 feet

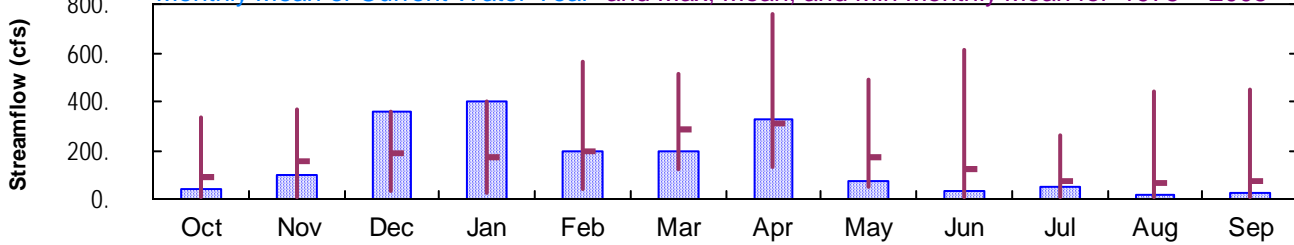
Drainage Area: 98.7 mi<sup>2</sup>

### Daily Mean Discharge

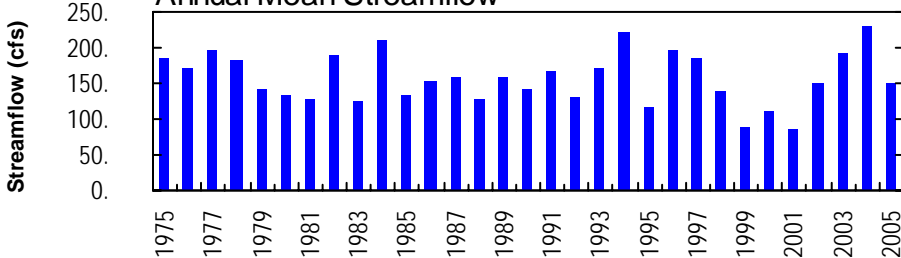


### Monthly Statistics

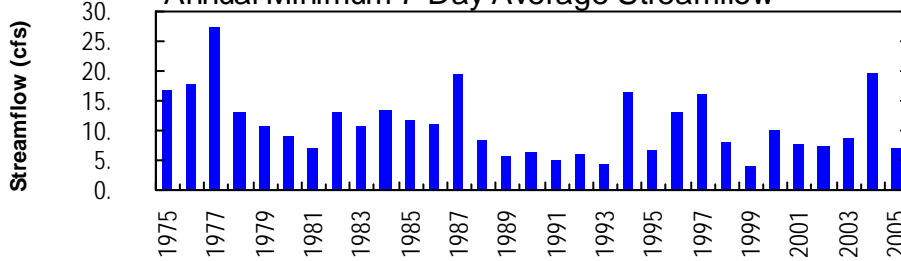
Monthly Mean of Current Water Year and Max, Mean, and Min Monthly Mean for 1975 – 2005



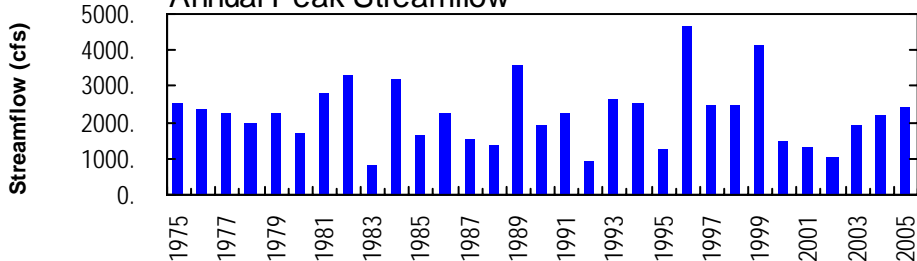
### Annual Mean Streamflow



### Annual Minimum 7-Day Average Streamflow



### Annual Peak Streamflow



## OSWAYO CREEK BASIN

## 03010655 OSWAYO CREEK AT SHINGLEHOUSE, PA

**LOCATION.**--Lat 41°57'42", long 78°11'54", Potter County, Hydrologic Unit 05010001, on right bank 200 ft upstream from bridge on State Highway 44 at Shinglehouse and 0.7 mi upstream from Honeoye Creek.

**DRAINAGE AREA.**--98.7 mi<sup>2</sup>.

**PERIOD OF RECORD.**--October 1974 to current year.

**GAGE.**--Water-stage recorder. Datum of gage is 1,460.34 ft above National Geodetic Vertical Datum of 1929 (U.S. Army Corps of Engineers benchmark).

**REMARKS.**--Records good except those for estimated daily discharges, which are poor. Several measurements of water temperature were made during the year. U.S. Army Corps of Engineers satellite telemetry at station.

**PEAK DISCHARGES FOR CURRENT YEAR.**--Peak discharges greater than a base discharge of 1,000 ft<sup>3</sup>/s and maximum (\*):

Date	Time	Discharge ft <sup>3</sup> /s	Gage Height (ft)	Date	Time	Discharge ft <sup>3</sup> /s	Gage Height (ft)
Dec. 23	2000	1,040	7.93	Apr. 3	0600	1,240	8.41
Jan. 14	1500	*2,440	*10.48				

DISCHARGE, CUBIC FEET PER SECOND, WATER YEAR OCTOBER 2004 TO SEPTEMBER 2005  
DAILY MEAN VALUES

DAY	OCT	NOV	DEC	JAN	FEB	MAR	APR	MAY	JUN	JUL	AUG	SEP
1	73	28	537	189	e156	e100	775	160	28	28	12	188
2	66	29	551	165	e154	e95	955	147	27	29	12	89
3	60	80	499	194	e154	e92	1210	136	28	23	13	53
4	55	72	400	360	e153	e89	906	126	32	20	11	38
5	51	106	334	367	e152	e86	683	113	28	33	9.9	29
6	47	103	275	411	e152	e85	560	104	e36	200	9.3	24
7	44	106	266	396	e154	e85	502	100	e50	148	8.7	21
8	40	101	290	368	e178	e182	432	95	e38	224	8.7	19
9	39	92	265	332	219	246	352	88	34	207	8.7	17
10	37	85	362	302	297	211	298	81	31	127	8.1	15
11	36	81	480	270	258	170	258	77	29	82	7.9	14
12	34	77	512	366	251	138	228	71	27	59	8.4	13
13	33	70	472	889	225	128	203	63	26	46	10	12
14	33	63	386	2120	211	120	182	64	24	38	9.9	12
15	34	59	320	1440	258	112	161	70	30	33	8.5	11
16	37	58	273	750	280	105	140	59	37	30	7.7	12
17	35	57	243	512	264	103	126	54	30	32	7.1	13
18	32	55	211	395	251	105	115	50	28	31	6.6	12
19	74	53	196	e321	233	108	106	46	26	25	8.2	11
20	49	59	176	e252	212	146	102	44	23	21	11	11
21	37	57	256	e207	205	184	111	42	22	20	8.6	10
22	35	53	247	e189	187	180	91	41	20	19	7.2	9.3
23	31	51	547	e187	168	202	121	38	19	18	6.9	9.6
24	31	57	782	e187	144	210	153	42	18	16	6.8	9.4
25	32	98	577	e189	141	216	161	40	17	15	6.5	8.7
26	30	99	433	e183	124	214	173	36	16	16	6.3	30
27	29	109	348	e173	e110	226	179	33	15	27	6.5	42
28	28	274	303	e171	e105	321	178	36	17	21	8.2	20
29	28	322	248	e164	---	483	171	38	73	16	9.0	53
30	30	331	214	e159	---	587	170	32	33	14	29	43
31	30	---	203	e157	---	633	---	30	---	13	325	---
TOTAL	1250	2885	11206	12365	5396	5962	9802	2156	862	1631	606.7	849.0
MEAN	40.3	96.2	361	399	193	192	327	69.5	28.7	52.6	19.6	28.3
MAX	74	331	782	2120	297	633	1210	160	73	224	325	188
MIN	28	28	176	157	105	85	91	30	15	13	6.3	8.7
CFSM	0.41	0.97	3.66	4.04	1.95	1.95	3.31	0.70	0.29	0.53	0.20	0.29
IN.	0.47	1.09	4.22	4.66	2.03	2.25	3.69	0.81	0.32	0.61	0.23	0.32

STATISTICS OF MONTHLY MEAN DATA FOR WATER YEARS 1975 - 2005, BY WATER YEAR (WY)

MEAN	90.2	152	188	168	194	283	310	173	122	72.6	65.8	75.7
MAX	331	371	361	399	561	517	755	489	612	264	437	452
(WY)	1991	1997	2005	2005	1976	1979	1993	1996	1989	2003	2003	1977
MIN	8.35	9.35	28.7	27.0	41.2	120	131	50.8	6.28	7.69	7.12	6.08
(WY)	1992	1999	1999	2001	1987	1981	1976	1993	1993	1993	1991	1991

e Estimated.

OSWAYO CREEK BASIN

03010655 OSWAYO CREEK AT SHINGLEHOUSE, PA--Continued

SUMMARY STATISTICS	FOR 2004 CALENDAR YEAR		FOR 2005 WATER YEAR		WATER YEARS 1975 - 2005	
ANNUAL TOTAL	76093		54970.7			
ANNUAL MEAN	208		151		157	
HIGHEST ANNUAL MEAN					231	2004
LOWEST ANNUAL MEAN					85.0	2001
HIGHEST DAILY MEAN	1890	Sep 18	2120	Jan 14	3270	Jun 21 1989
LOWEST DAILY MEAN	18	Jul 11	6.3	Aug 26	3.2	Sep 13 1989
ANNUAL SEVEN-DAY MINIMUM	20	Jul 6	6.9	Aug 22	4.1	Aug 31 1999
MAXIMUM PEAK FLOW			2440	Jan 14	<b>a</b> 4660	Jan 19 1996
MAXIMUM PEAK STAGE			10.48	Jan 14	<b>b</b> 12.74	Jan 19 1996
INSTANTANEOUS LOW FLOW			6.0	Aug 26,27	3.2	Sep 13 1989
ANNUAL RUNOFF (CFSM)	2.11		1.53		1.59	
ANNUAL RUNOFF (INCHES)	28.68		20.72		21.67	
10 PERCENT EXCEEDS	435		355		358	
50 PERCENT EXCEEDS	115		81		88	
90 PERCENT EXCEEDS	34		12		15	

**a** From rating curve extended above 2,600 ft<sup>3</sup>/s.  
**b** From peak-stage indicator.

