



2005 Water Year
OHIO RIVER BASIN
03007800 Allegheny River at Port Alleghany, PA

Latitude: 41° 49 ' 07"

Longitude: 078° 17 ' 35"

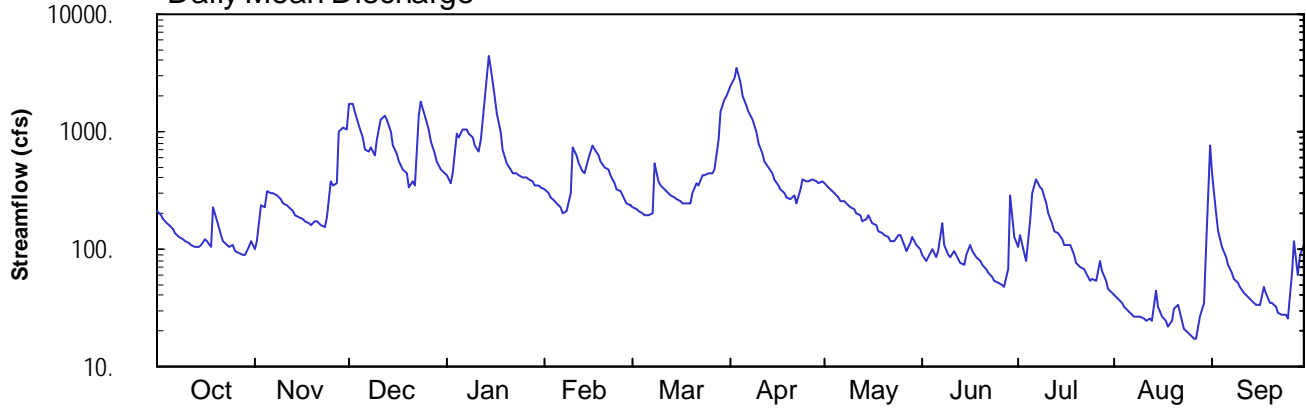
Hydrologic Unit Code: 05010001

Mckean County

Datum: 1454.88 feet

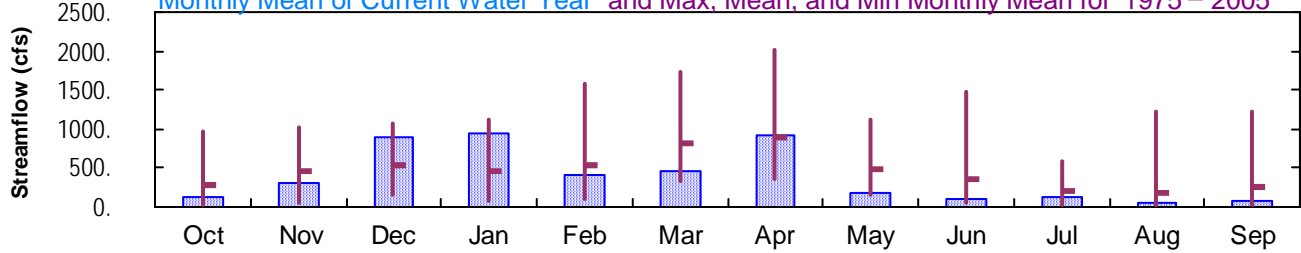
Drainage Area: 248. mi²

Daily Mean Discharge

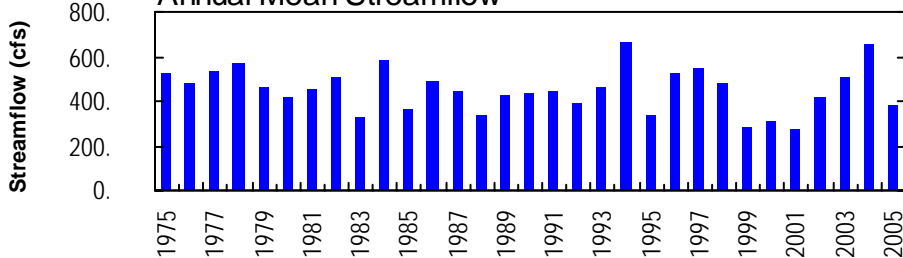


Monthly Statistics

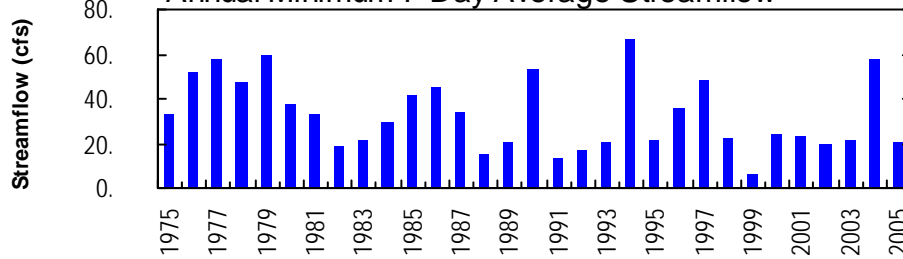
Monthly Mean of Current Water Year and Max, Mean, and Min Monthly Mean for 1975 – 2005



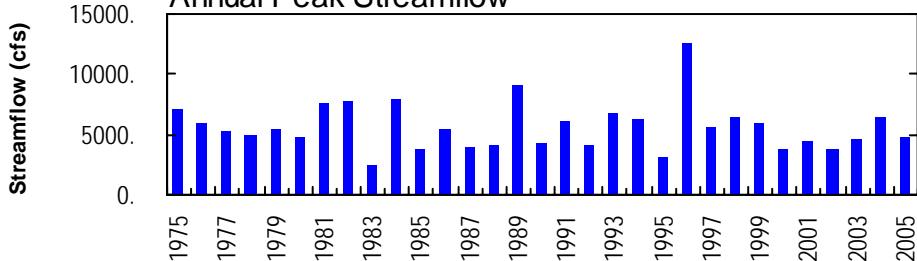
Annual Mean Streamflow



Annual Minimum 7-Day Average Streamflow



Annual Peak Streamflow



SURFACE-WATER STATION RECORDS

OHIO RIVER MAIN STEM

03007800 ALLEGHENY RIVER AT PORT ALLEGANY, PA

LOCATION.--Lat 41°49'07", long 78°17'35", McKean County, Hydrologic Unit 05010001, on right bank 40 ft upstream from bridge on U.S. Highway 6 at Port Allegany, 1.1 mi upstream from Twomile Creek, 1.4 mi downstream from Allegheny Portage Creek, at mile 285.5.

DRAINAGE AREA.--248 mi².

PERIOD OF RECORD.--October 1974 to current year. Discharge measurements obtained by U.S. Army Corps of Engineers March 1971 to October 1974.

GAGE.--Water-stage recorder. Datum of gage is 1,454.88 ft above National Geodetic Vertical Datum of 1929.

REMARKS.--Records good except those for estimated daily discharges, which are poor. Several measurements of water temperature were made during the year. U.S. Army Corps of Engineers satellite telemetry at station.

EXTREMES OUTSIDE PERIOD OF RECORD.--Flood of June 23, 1972 reached a stage of at least 17.5 ft, discharge, 21,700 ft³/s, from U.S. Army Corps of Engineers discharge measurement. Actual peak discharge may have been greater.

PEAK DISCHARGES FOR CURRENT YEAR.--Peak discharges greater than a base discharge of 2,500 ft³/s and maximum (*):

| Date | Time | Discharge ft ³ /s | Gage Height (ft) | Date | Time | Discharge ft ³ /s | Gage Height (ft) |
|---------|------|---------------------------------|---------------------|--------|------|---------------------------------|---------------------|
| Jan. 14 | 1700 | *4,730 | *11.24 | Apr. 3 | 0900 | 3,610 | 10.03 |

DISCHARGE, CUBIC FEET PER SECOND, WATER YEAR OCTOBER 2004 TO SEPTEMBER 2005
DAILY MEAN VALUES

| DAY | OCT | NOV | DEC | JAN | FEB | MAR | APR | MAY | JUN | JUL | AUG | SEP |
|-------|------|------|-------|-------|-------|-------|-------|------|------|------|------|------|
| 1 | 211 | 101 | 1750 | 421 | e321 | e228 | 2430 | 360 | 88 | 104 | 41 | 444 |
| 2 | 195 | 117 | 1750 | 363 | e297 | e217 | 2910 | 331 | 80 | 133 | 38 | 213 |
| 3 | 182 | 237 | 1500 | 442 | e277 | e208 | 3510 | 323 | 84 | 91 | 35 | 141 |
| 4 | 168 | 223 | 1130 | 978 | e253 | e200 | 2690 | 298 | 100 | 78 | 32 | 106 |
| 5 | 157 | 311 | 884 | 880 | e249 | e195 | 2020 | 272 | 86 | 181 | 30 | 86 |
| 6 | 146 | 301 | 698 | 1030 | e225 | e192 | 1640 | 257 | 97 | 295 | 28 | 72 |
| 7 | 135 | 303 | 682 | 1020 | e201 | e204 | 1470 | 251 | 166 | 395 | 26 | 63 |
| 8 | 128 | 290 | 740 | 962 | e209 | 539 | 1260 | 242 | 108 | 342 | 26 | 56 |
| 9 | 122 | 269 | 616 | 873 | e297 | 373 | 985 | 226 | 88 | 326 | 26 | 52 |
| 10 | 118 | 248 | 841 | 757 | 734 | e347 | 791 | 215 | 84 | 241 | 25 | 47 |
| 11 | 113 | 240 | 1260 | 665 | 616 | e323 | 658 | 205 | 98 | 198 | 24 | 43 |
| 12 | 108 | 231 | 1390 | 856 | 526 | e304 | 560 | 192 | 83 | 167 | 25 | 39 |
| 13 | 105 | 212 | 1260 | 1870 | 464 | e288 | 497 | 175 | 75 | 142 | 25 | 37 |
| 14 | 104 | 194 | 993 | 4360 | 437 | e273 | 442 | 180 | 72 | 137 | 44 | 35 |
| 15 | 106 | 183 | 776 | 3530 | 605 | 262 | 395 | 192 | 89 | 122 | 32 | 33 |
| 16 | 123 | 178 | 641 | 2050 | 767 | 256 | 349 | 168 | 109 | 108 | 27 | 33 |
| 17 | 115 | 171 | 554 | 1420 | 712 | 246 | 318 | 157 | 96 | 108 | 25 | 47 |
| 18 | 103 | 168 | 473 | 1010 | 629 | 247 | 294 | 145 | 86 | 109 | 22 | 42 |
| 19 | 227 | 161 | 439 | e699 | 549 | 248 | 273 | 135 | 81 | 90 | 25 | 35 |
| 20 | 172 | 171 | 332 | e534 | 486 | 304 | 261 | 130 | 72 | 77 | 31 | 34 |
| 21 | 129 | 175 | 370 | e470 | 468 | 357 | 285 | 127 | 67 | 69 | 33 | 32 |
| 22 | 119 | 160 | 348 | e445 | 417 | 351 | 245 | 118 | 62 | 67 | 25 | 29 |
| 23 | 108 | 154 | 1390 | e440 | 369 | 423 | 321 | 116 | 59 | 62 | 21 | 27 |
| 24 | 102 | 185 | 1800 | e430 | 321 | 423 | 385 | 132 | 53 | 55 | 20 | 27 |
| 25 | 107 | 370 | 1370 | e410 | 306 | 437 | 374 | 129 | 51 | 55 | 18 | 26 |
| 26 | 98 | 348 | 1040 | e400 | 286 | 443 | 372 | 108 | 49 | 54 | 17 | 63 |
| 27 | 93 | 363 | 815 | e385 | 249 | 480 | 388 | 98 | 48 | 80 | 17 | 115 |
| 28 | 89 | 994 | 653 | e375 | e235 | 853 | 381 | 111 | 69 | 65 | 27 | 60 |
| 29 | 88 | 1090 | 561 | e350 | --- | 1470 | 363 | 128 | 282 | 54 | 35 | 88 |
| 30 | 106 | 1030 | 475 | e345 | --- | 1850 | 371 | 106 | 128 | 47 | 98 | 108 |
| 31 | 116 | --- | 442 | e333 | --- | 2040 | --- | 98 | --- | 43 | 751 | --- |
| TOTAL | 3993 | 9178 | 27973 | 29103 | 11505 | 14581 | 27238 | 5725 | 2710 | 4095 | 1649 | 2233 |
| MEAN | 129 | 306 | 902 | 939 | 411 | 470 | 908 | 185 | 90.3 | 132 | 53.2 | 74.4 |
| MAX | 227 | 1090 | 1800 | 4360 | 767 | 2040 | 3510 | 360 | 282 | 395 | 751 | 444 |
| MIN | 88 | 101 | 332 | 333 | 201 | 192 | 245 | 98 | 48 | 43 | 17 | 26 |
| CFSM | 0.52 | 1.23 | 3.64 | 3.79 | 1.66 | 1.90 | 3.66 | 0.74 | 0.36 | 0.53 | 0.21 | 0.30 |
| IN. | 0.60 | 1.38 | 4.20 | 4.37 | 1.73 | 2.19 | 4.09 | 0.86 | 0.41 | 0.61 | 0.25 | 0.33 |

STATISTICS OF MONTHLY MEAN DATA FOR WATER YEARS 1975 - 2005, BY WATER YEAR (WY)

| | | | | | | | | | | | | |
|------|------|------|------|------|------|------|------|------|------|------|------|------|
| MEAN | 272 | 452 | 529 | 456 | 528 | 825 | 894 | 495 | 362 | 204 | 191 | 243 |
| MAX | 964 | 1018 | 1082 | 1119 | 1572 | 1730 | 2006 | 1127 | 1484 | 598 | 1230 | 1226 |
| (WY) | 1991 | 1997 | 1978 | 1998 | 1976 | 1979 | 1993 | 1996 | 1989 | 1977 | 2003 | 1977 |
| MIN | 31.2 | 39.7 | 150 | 78.2 | 98.0 | 326 | 359 | 142 | 48.5 | 28.5 | 15.0 | 20.7 |
| (WY) | 1983 | 1999 | 1999 | 1981 | 1980 | 1993 | 1976 | 1985 | 1991 | 1991 | 1999 | 1991 |

e Estimated.

OHIO RIVER MAIN STEM

03007800 ALLEGHENY RIVER AT PORT ALLEGANY, PA--Continued

| SUMMARY STATISTICS | FOR 2004 CALENDAR YEAR | | FOR 2005 WATER YEAR | | WATER YEARS 1975 - 2005 | |
|--------------------------|------------------------|--------|---------------------|-----------|-------------------------|-------------|
| ANNUAL TOTAL | 211236 | | 139983 | | | |
| ANNUAL MEAN | 577 | | 384 | | 453 | |
| HIGHEST ANNUAL MEAN | | | | | 670 | 1994 |
| LOWEST ANNUAL MEAN | | | | | 275 | 2001 |
| HIGHEST DAILY MEAN | 5880 | Sep 18 | 4360 | Jan 14 | 8860 | Jan 20 1996 |
| LOWEST DAILY MEAN | 47 | Jul 11 | 17 | Aug 26,27 | 5.4 | Sep 5 1999 |
| ANNUAL SEVEN-DAY MINIMUM | 58 | Jul 6 | 21 | Aug 22 | 6.4 | Aug 31 1999 |
| MAXIMUM PEAK FLOW | | | 4730 | Jan 14 | a 12600 | Jan 19 1996 |
| MAXIMUM PEAK STAGE | | | 11.24 | Jan 14 | b 15.37 | Jan 19 1996 |
| INSTANTANEOUS LOW FLOW | | | 16 | Aug 27 | 5.1 | Sep 6 1999 |
| ANNUAL RUNOFF (CFSM) | 2.33 | | 1.55 | | 1.83 | |
| ANNUAL RUNOFF (INCHES) | 31.69 | | 21.00 | | 24.83 | |
| 10 PERCENT EXCEEDS | 1380 | | 968 | | 1030 | |
| 50 PERCENT EXCEEDS | 316 | | 209 | | 250 | |
| 90 PERCENT EXCEEDS | 107 | | 36 | | 48 | |

a From rating curve extended above 6,700 ft³/s.

b From peak-stage indicator.

