

## Chapter 1: Study Area Description

Mary M. Rowland and Matthias Leu

*Abstract.* The boundary for the Wyoming Basins Ecoregional Assessment (WBEA) was largely determined by the co-occurrence of some of the largest tracts of intact sagebrush (*Artemisia* spp.) remaining in the western United States with areas of increasing resource extraction. The WBEA area includes two ecoregions in their entirety, Wyoming Basins and Utah-Wyoming Rocky Mountains, and portions of two others (Southern Rocky Mountains and Middle Rockies-Blue Mountains). Over half the study area is in Wyoming; the remainder includes parts of Colorado, Utah, Idaho, and Montana. Private landowners manage most (33.1%) of the land base in the WBEA, followed by the U.S. Forest Service (27.3%) and U.S. Bureau of Land Management (25.6%). Sagebrush is the dominant land cover type in the study area, totaling >130,000 km<sup>2</sup>; nearly half the sagebrush in the WBEA is managed by the U.S. Bureau of Land Management. Sagebrush in the WBEA faces many potential threats that also influence the broader sagebrush ecosystem. Climate change, drought, land-use practices (e.g., livestock grazing, oil and gas development), and human development have eliminated and fragmented the sagebrush ecosystem, altered fire regimes, and accelerated the invasion of exotic plants such as cheatgrass (*Bromus tectorum*). Less than 2% of sagebrush in the WBEA is permanently protected from land cover conversion.

*Key words:* ecoregional assessment, land cover, sagebrush, threats, Wyoming Basins.

Ecoregions have been widely adapted in conservation planning and are used by a variety of organizations and agencies such as The Nature Conservancy (TNC), World

Wildlife Fund, U.S. Environmental Protection Agency (EPA), U.S. Bureau of Land Management (BLM), U.S. Forest Service (FS), and the U.S. Natural Resources Conservation Service (NRCS). Applications include regional conservation planning, biodiversity analysis, sustainable development, and agricultural census (Groves et al. 2000, McMahon et al. 2001, Noss et al. 2001, Bailey 2002). Ecoregions are large areas of relatively uniform climate, within which sites with similar landforms, slope, soils, and drainage systems support similar ecosystems (Groves et al. 2000, Noss et al. 2001, Bailey 2002). Ecosystems in turn are areas of interacting biological and physical components such that changes in any one component effect change in other components and the system as a whole (Bailey 2002). Although an ecoregion may contain a diversity of ecosystems, characteristic patterns of sites recur predictably due to the overriding influence of climate (Bailey 2002).

Regional conservation planning in the sagebrush (*Artemisia* spp.) ecosystem is especially critical because this ecosystem faces many potential threats. Climate change, drought, land-use practices, and human development have altered fire cycles and accelerated the invasion of exotic plants such as cheatgrass (*Bromus tectorum*) (D'Antonio and Vitousek 1992, Tausch et al. 1993, Knight 1994, Miller and Eddleman 2000, Smith et al. 2000, Neilson et al. 2005). Woody species, such as juniper (*Juniperus* spp.) and Douglas-fir (*Pseudotsuga menziesii*), are encroaching into the sagebrush ecosystem due to changes in fire regimes (Miller et al. 2000, Tausch and Nowak 2000, Miller and Tausch 2001, Grove et al. 2005). Habitat loss, degradation, and fragmentation associated with

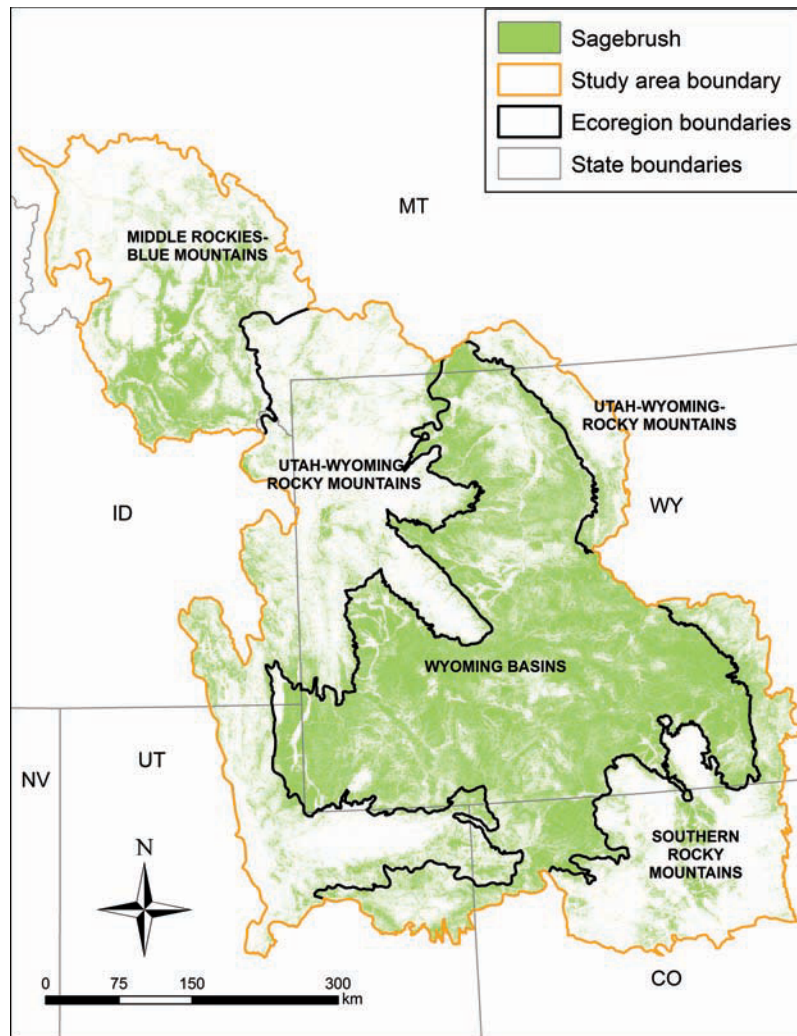


FIG. 1.1. Sagebrush plant communities within the Wyoming Basins Ecoregional Assessment study area. (See Appendix 1.1 for all sagebrush land cover types mapped as sagebrush). Ecoregion boundaries are those delineated by The Nature Conservancy, which are in turn a slightly modified version of ecoregions described by Bailey (1995); see Groves et al. (2000) and [http://gis.tnc.org/data/MapbookWebsite/map\\_page.php?map\\_id=9](http://gis.tnc.org/data/MapbookWebsite/map_page.php?map_id=9).

road development are increasing (Forman et al. 2003, Gelbard and Belnap 2003, Thomson et al. 2005). Energy development has accelerated across the sagebrush ecosystem, resulting in increasing rates of habitat fragmentation and disturbance to native wildlife, such as greater sage-grouse (*Centrocercus urophasianus*), pronghorn (*Antilocapra americana*), and mule deer (*Odocoileus hemionus*) (Weller et al. 2002,

Lyon and Anderson 2003, Holloran 2005, Thomson et al. 2005, Sawyer et al. 2006, Knick and Connelly 2011).

Wyoming and portions of adjacent states encompass some of the most expansive sagebrush plant communities remaining in North America (Fig. 1.1; Knick et al. 2003) as well as areas of rapidly increasing development, especially of oil and gas fields (Weller et al. 2002, Thom-

son et al. 2005, Ch. 3). We conducted our regional assessment in this area and refer to it in this book as the Wyoming Basins Ecoregional Assessment (WBEA) area. The assessment name is derived from the largest ecoregion of the four that are wholly or partially contained within its boundaries. This ecoregion, the Wyoming Basins (The Nature Conservancy 2008) – hereafter, “Wyoming Basins” refers to the WBEA area, and when specifically referring to the area defining the Wyoming Basins Ecoregion we use “Wyoming Basins Ecoregion” – ranks third among all ecoregions in the western United States in extent of sagebrush cover (88,300 km<sup>2</sup>), surpassed only by the Columbia Plateau (159,200 km<sup>2</sup>) and Great Basin (98,400 km<sup>2</sup>) ecoregions. The Utah-Wyoming Rocky Mountains Ecoregion contributes another 19,800 km<sup>2</sup> of sagebrush within the study area; sagebrush in this ecoregion and the Wyoming Basins Ecoregion, combined, comprises >20% of the sagebrush in the nation. Moreover, the percentage of the land base covered by sagebrush in the Wyoming Basins Ecoregion (60%) is greater than in any other ecoregion in the nation.

The Wyoming Basins Ecoregional Assessment was completed to provide information for developing strategies for conservation and management of sagebrush in this key area (Introduction). In this chapter, we describe: (1) rationale for selection of the study area boundary; (2) environmental and management conditions within the study area, including vegetation (emphasizing sagebrush ecosystems), wildlife, and land management status; and (3) potential threats to sagebrush ecosystems and associated habitats for species of concern in the WBEA.

## **DEFINING THE ASSESSMENT AREA BOUNDARIES**

Regional assessment boundaries can be ecological, administrative, or a combi-

nation, depending on objectives of the assessment. Boundary selection, in turn, influences application of the results in land management and conservation planning. Ecologically based evaluations provide a biologically meaningful spatial framework for resource management agencies and conservation organizations (Groves et al. 2000, McMahon et al. 2001). However, management based solely on ecological boundaries may not effectively consider information gathered at administrative scales, because of the mismatch of spatial extents. The boundary for the Wyoming Basins Ecoregional Assessment was largely determined by the co-occurrence of some of the largest tracts of intact sagebrush remaining in the western United States with areas of increasing resource extraction. That is, the assessment boundary was first derived ecologically and then expanded to include adjacent regions of management concern.

To capture their extensive sagebrush communities, the WBEA contains two entire ecoregions: Wyoming Basins and Utah-Wyoming Rocky Mountains (Fig. 1.1). We extended the study area beyond these two ecoregions to include: (1) a portion of the northern extent of the Southern Rocky Mountains Ecoregion in Colorado and Wyoming; and (2) portions of the Middle Rockies-Blue Mountains Ecoregion in southwestern Montana, primarily the Bitterroot Valley and Beaverhead Mountain sections. We included the northern reaches of the Southern Rocky Mountains Ecoregion specifically to assess ongoing and proposed energy development, primarily of oil and natural gas in this area. By contrast, we included southwestern Montana to incorporate sagebrush ecosystems and associated species omitted from the broad-scale assessment of the Interior Columbia Basin (Hann et al. 1997, Wisdom et al. 2000). Southwestern Montana supports some of the most extensive stands of sagebrush in Montana, and populations of greater sage-grouse in this area are of con-

cern due to long-term declines (Connelly and Braun 1997, Dusek et al. 2002, Roscoe 2002, Knick and Connelly 2011).

The WBEA complements other regional assessments in the Wyoming Basins area. The Nature Conservancy has developed conservation plans for all four ecoregions within the WBEA boundaries: Middle Rockies-Blue Mountains (The Nature Conservancy 2000); Southern Rocky Mountains (Neely et al. 2001); Utah-Wyoming Rocky Mountains (Noss et al. 2001); and Wyoming Basins (Freilich et al. 2001). The general objective of TNC plans is to identify a suite of conservation targets at multiple levels (e.g., species, communities) for long-term conservation of biodiversity. TNC plans and the WBEA share several common features: (1) a comprehensive and systematic approach, (2) a regional scope, (3) a scientific and ecoregional basis, (4) geographic area, (5) an identification of species of concern, and (6) a management and conservation focus. The WBEA differs from those developed by TNC; our assessment provides a broad-scale assessment of (1) anthropogenic disturbances and their effects explicitly focused on sagebrush communities and (2) sagebrush-associated vertebrates and plants in the Wyoming Basins.

Other conservation plans and assessments have been developed in this region. The Heart of the West Conservation Plan had boundaries similar to the WBEA and described a wildlands network incorporating the Wyoming Basins Ecoregion, Utah-Wyoming Rocky Mountains Ecoregion, and adjacent lands (Jones et al. 2004). Other work complementary to our assessment has been conducted within the sagebrush ecosystem across broader scales, such as the SAGE-MAP Project [<http://sagemap.wr.usgs.gov>] (U.S. Geological Survey 2001) and the range-wide conservation assessment of greater sage-grouse (Connelly et al. 2004).

Although the WBEA area includes areas of exceptional biodiversity and national significance, such as Rocky Mountain

and Yellowstone National Parks, our focus was on the sagebrush ecosystem and its management, with emphasis on lands managed by the BLM and FS. Thus, this book evaluates the current status of lower elevation shrublands and associated species in the WBEA area.

## STUDY AREA

### Overview

The WBEA area includes a diversity of habitat types, ranging from alpine tundra to arid shrublands, and a tremendous array of wildlife species. The Greater Yellowstone Ecosystem harbors populations of grizzly bears (*Ursus arctos horribilis*) and gray wolves (*Canis lupus*), as well as the entire suite of native ungulates of the Rocky Mountain West, including bighorn sheep (*Ovis canadensis*), moose (*Alces alces*), white-tailed (*Odocoileus virginianus*) and mule (*O. hemionus*) deer, Rocky Mountain elk (*Cervus elaphus*), bison (*Bison bison*), and pronghorn. Wyoming supports more pronghorn than any other state (Clark and Stromberg 1987); the Sublette herd unit alone has an estimated 48,000 animals, more than the entire population in most western states (WEST 2003). The WBEA area also contains some of the key strongholds for greater sage-grouse populations (Knick and Hanser 2011).

For further details on the flora, fauna, and abiotic environment of the study area as a whole, the reader is referred to: TNC plans that apply to the study area (The Nature Conservancy 2000, Freilich et al. 2001, Neely et al. 2001, Noss et al. 2001); a summary of terrestrial ecoregions of North America (Ricketts et al. 1999); and the synthesis of Wyoming landscapes found in Knight (1994). Additional descriptions of sagebrush-associated vascular plants and vertebrates of concern are provided in Chapter 2.

The WBEA area incorporates 345,300 km<sup>2</sup>, of which the majority (51.0%) is in Wyoming. The study area also includes

parts of southwestern Montana (21.1%), northern Colorado (12.6%), northeastern Utah (10.4%), and a small part of eastern Idaho (4.9%). Among TNC ecoregions in the study area, 38.7% of the study area is within the Wyoming Basins, 31.7% in the Utah-Wyoming Rocky Mountains, 16.4% in the Middle Rockies-Blue Mountains, and 13.2% in the Southern Rocky Mountains.

### Wyoming Basins

The Wyoming Basins Ecoregion encompasses 134,000 km<sup>2</sup> in five states (Fig. 1.1). The bulk (84%) of the ecoregion lies in Wyoming, with 15% in Utah and Colorado and only a trace in Montana and Idaho (1%; see Freilich et al. [2001] for further details). Climate is arid, with an average annual precipitation of 15-25 cm; the Wyoming Basins Ecoregion includes the most arid parts of the state of Wyoming (Freilich et al. 2001). Extremes of cold, wet winters and hot, dry summers in the region are typical of continental climate patterns.

Major river systems (including the North Platte, Bighorn, Upper Green, Yampa, and Sweetwater) support riparian corridors vital for maintaining biodiversity in the region. Although some mountain peaks exceed 3,300 m, most of the ecoregion lies between 1,800 m and 2,400 m. More than a dozen mountain ranges (e.g., Ferris and Pryor Mountains, Wyoming Range) dissect the ecoregion, forming "islands" in the surrounding sagebrush matrix (Freilich et al. 2001).

Vegetation communities in the Wyoming Basins Ecoregion are dominated by rolling sagebrush uplands, and Wyoming big sagebrush (*A. t. ssp. wyomingensis*) is the dominant sagebrush taxon. Black sagebrush (*A. nova*) reaches its easternmost extension in Wyoming, and large expanses of little sagebrush (*A. arbuscula*) are present. Salt desert shrubs, such as greasewood (*Sarcobatus vermiculatus*) and saltbush (*Atriplex* spp.), replace sagebrush in more arid sites.

Despite its vast size, this ecoregion remains one of the least densely populated areas in the United States. Laramie, Wyoming, is the largest city in the ecoregion (population 25,700 in 2006), and most people are located in isolated rural areas (Freilich et al. 2001).

### Utah-Wyoming Rocky Mountains

The Utah-Wyoming Rocky Mountains Ecoregion covers >42,100 km<sup>2</sup> in parts of five states: Colorado, Idaho, Montana, Utah, Wyoming (Fig. 1.1; Noss et al. 2001). Climate in this ecoregion is cold continental, with long winters and short summers (Noss et al. 2001). Precipitation is highly variable across the ecoregion, with some of the most arid portions of the region receiving <16 cm rainfall a year, contrasting with >200 cm in the southeastern portion of Yellowstone National Park (Noss et al. 2001). The ecoregion includes the Greater Yellowstone Ecosystem, along with much of the Beartooth Plateau in Montana, the Bighorn Mountains in eastern Wyoming, the Wasatch Range in Utah, and the Uinta Mountains in Colorado and Utah.

Shrub-grass communities dominate lower elevations in the ecoregion, whereas higher elevations, such as those in the Bighorn and Uinta Mountains, are forested. Common sagebrush species in lower elevation shrublands include basin big sagebrush (*A. t. ssp. tridentata*) and Wyoming big sagebrush, with mountain big sagebrush (*A. t. ssp. vaseyana*) found at somewhat higher elevations. Other high elevation sites support spiked sagebrush (*A. t. ssp. spiciformis*). Saltbush and greasewood shrublands also occur in lower elevations. Douglas-fir is the most abundant tree species in lower-elevation forests, whereas Englemann spruce (*Picea engelmanni*), lodgepole pine (*Pinus contorta*), and subalpine fir (*Abies lasiocarpa*) dominate mid-elevation forests. Alpine tundra occurs at the highest elevations, often >3,000 m.

Human populations in the Utah-Wyoming Rocky Mountain Ecoregion are

largely concentrated along the Wasatch Front in Utah; however, counties in the Greater Yellowstone Ecosystem have also seen rapid growth in recent decades, particularly Teton County in both Wyoming and in Idaho (Noss et al. 2001).

### **Southern Rocky Mountains**

The relatively small proportion of the Southern Rocky Mountains Ecoregion in the study area lies in Wyoming and Colorado (Fig. 1.1). Climate in this ecoregion is characterized as temperate semiarid steppe, with mean annual temperatures ranging from 1.7 to 7.2 C (Neely et al. 2001). Precipitation is generally higher in the northern portion of the ecoregion, reaching 140 cm annually in the Park Range. The Continental Divide is a dominant feature of the ecoregion. The many mountain ranges (including the Laramie Mountains, Medicine Bows, Front Range, Park Range, and Sierra Madres) and associated topographic relief greatly influence local weather patterns. Headwater watersheds of the Colorado, Mississippi, and Rio Grande rivers are located in the ecoregion (Neely et al. 2001).

This ecoregion includes large intermontane basins (e.g., North Park and Middle Park) that support extensive higher elevation sagebrush ecosystems of primarily mountain big sagebrush, little sagebrush, and silver sagebrush (*A. cana*) (Neely et al. 2001). Much of the research on greater sage-grouse in Colorado has been conducted in these parks (e.g., Petersen 1980, Remington and Braun 1985, Braun and Beck 1996, Johnson and Braun 1999, Zablan et al. 2003).

Major ecological zones range from lower montane-foothill, which includes more arid sagebrush ecosystems, pinyon (*Pinus edulis*)-juniper woodlands, and Douglas-fir/ponderosa pine (*Pinus ponderosa*) forests, to upper montane, subalpine, and alpine zones. Rates of human population increase are among the highest in the nation, with an average increase at the coun-

ty level of 31% from 1990–2000 (Neely et al. 2001).

### **Middle Rockies-Blue Mountains**

Two sections of the Middle Rockies-Blue Mountains Ecoregion are in the WBEA area – Beaverhead Mountains and Bitterroot Valley; both are in Montana (Fig. 1.1; The Nature Conservancy 2000). The climate here is characterized as cold, dry continental, with highly variable precipitation, falling primarily as snow in fall, winter, and spring. Elevation in the valleys ranges from 1,200 m to 2,100 m. This area is topographically complex, with steep, heavily glaciated mountains and intermontane valleys that have been widely developed for housing and other structures in the Bitterroot Valley. Rivers include the Bitterroot, Beaverhead, Blackfoot, and Clark Fork; major mountain ranges in this portion of the study area are the Anacosta Range, Centennial Mountains, and Madison Range (The Nature Conservancy 2000).

Sagebrush-grasslands are the dominant non-forest land cover type in this portion of the study area, with most of the sagebrush occurring in the southwestern corner of Montana (Fig. 1.1). Development of primary and secondary homes and resorts are considered major threats in this ecoregion (The Nature Conservancy 2000).

### **Land Management Status**

Private landowners in the WBEA area manage >114,000 km<sup>2</sup> (33.1%) of the study area, more than any other management entity (Table 1.1). Private lands were well distributed across the entire study area and formed a “checkerboard” pattern where they are intermingled with lands managed by BLM and state agencies, especially in a wide swath across southern Wyoming (Fig. 1.2). Two federal land management agencies, the FS and BLM, are responsible for the majority of the non-private lands; the FS manages 94,300 km<sup>2</sup> (27.3%) and the

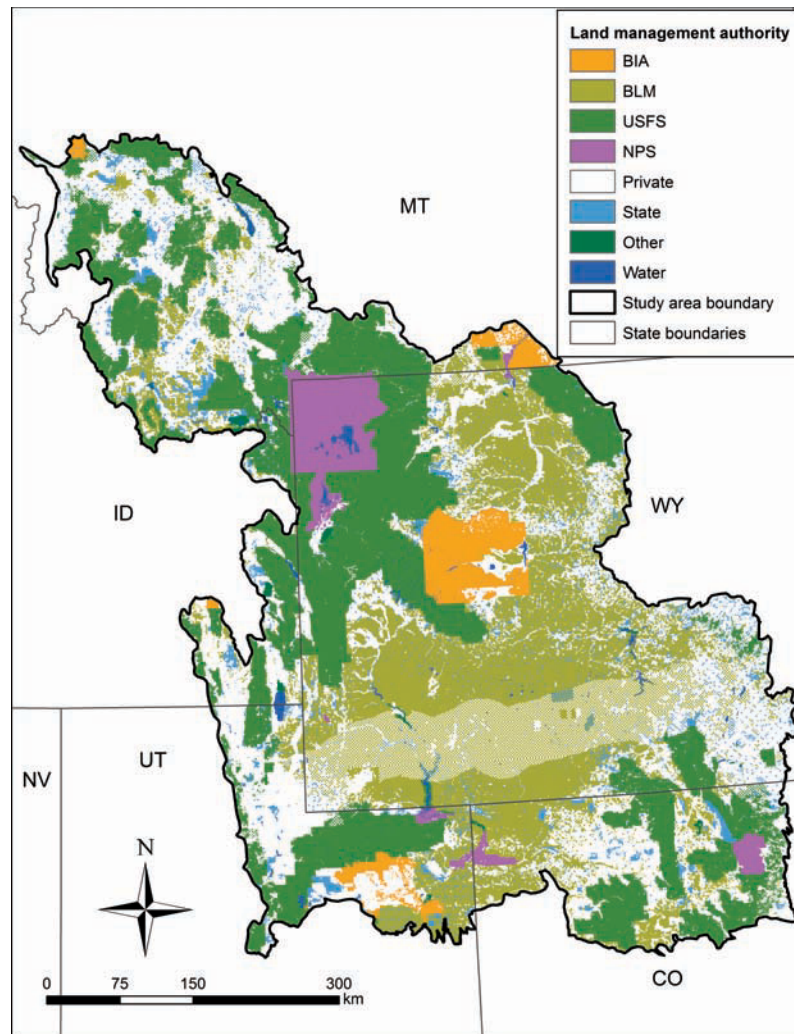


FIG. 1.2. Land management authority within the Wyoming Basins Ecoregional Assessment area.

BLM 88,300 km<sup>2</sup> (25.6%) within the study area. Most of the remaining land management authority rests with states (5.4%), the National Park Service (3.5%), and the Bureau of Indian Affairs (3.4%). The latter is comprised largely of the Wind River Indian Reservation in Wyoming (Fig. 1.2), whereas the majority of the National Park Service lands are in Yellowstone, Teton, and Rocky Mountain national parks.

Land stewardship patterns within the five states included in the WBEA differed somewhat from those for the study area

as a whole (Table 1.1). For example, although private land was the dominant category across the WBEA, at the state level this was only true for Colorado, Montana, and Utah. Wyoming had the smallest percentage (28.0%) of private land and the largest percentage (37.3%) of land managed by the BLM among the states in the study area; public lands under BLM management extended across 65,500 km<sup>2</sup> of the study area in Wyoming. The FS had management responsibility for a relatively large percentage of the land within the

TABLE 1.1. Land stewardship by state and agency within the Wyoming Basins Ecoregional Assessment area.

Agency	Colorado		Idaho		Montana		Utah		Wyoming		Total	
	km <sup>2</sup>	%	km <sup>2</sup>	%	km <sup>2</sup>	%	km <sup>2</sup>	%	km <sup>2</sup>	%	km <sup>2</sup>	%
BIA <sup>a</sup>	<1	0.0	131	0.8	2,109	2.9	2,030	5.6	7,331	4.2	11,601	3.4
BLM	10,108	23.2	955	5.6	6,243	8.6	5,477	15.2	65,537	37.3	88,320	25.6
NPS	1,683	3.9	142	0.8	786	1.1	528	1.5	8,824	5.0	11,963	3.5
Private	15,143	34.7	6,457	38.1	29,724	40.8	13,812	38.4	49,208	28.0	114,346	33.1
State	2,202	5.0	841	5.0	4,348	6.0	2,179	6.1	8,980	5.1	18,551	5.4
FS	14,361	32.9	7,961	47.0	28,854	39.6	9,135	25.4	33,986	19.3	94,297	27.3
Other <sup>b</sup>	120	0.3	468	2.8	828	1.1	2,825	7.9	1,981	1.1	6,222	1.8
Total	43,618	100.0	16,955	100.0	72,892	100.0	35,987	100.0	175,847	100.0	345,300	100.0

<sup>a</sup> BIA – Bureau of Indian Affairs; BLM – U.S. Bureau of Land Management; NPS – National Park Service; FS – U.S. Forest Service.

<sup>b</sup> Includes Bureau of Reclamation, Department of Defense, The Nature Conservancy, U.S. Fish and Wildlife Service, water, local ownerships, and miscellaneous federal lands.

study area in Idaho (47.0%) and Montana (39.6%) (Table 1.1).

## Land Cover

### Use of LANDFIRE

For all WBEA analyses based on land cover type, including sagebrush, we used the LANDFIRE existing vegetation type (EVT) data layer (LANDFIRE 2007). The LANDFIRE project was designed to produce consistent maps of vegetation, fuels, and fire regimes for wildland fire management across the United States (<http://www.landfire.gov/index.php>). To increase accuracy of mapped land cover types and meet study objectives, we reclassified the LANDFIRE EVT map from the original 102 land cover types that occurred in the study area to 24 more generalized types (Appendix 1.1). The resulting land cover map was used to model the distribution and/or abundance of wildlife and invasive plants in the study area (Ch. 5–10). For summary statistics presented in this chapter, we further collapsed the 24 land cover types to 14 (Appendix 1.1). The primary reclassification of this second step was within the shrubland cover types; all sagebrush land cover types were combined as “sagebrush,” and various shrub types (e.g., mountain mahogany [*Cercocarpus* spp.]) were reclassified as “mixed shrubland.”

### Sagebrush in the WBEA

Sagebrush is the dominant land cover in the WBEA area (38.1%; 131,600 km<sup>2</sup>; Table 1.2, Fig. 1.3). The overwhelming majority (67.8%) of sagebrush is in Wyoming (89,200 km<sup>2</sup>), but substantial amounts (37,400 km<sup>2</sup>) also are found in portions of southwestern Montana, northeastern Utah, and northwestern Colorado (Fig. 1.3).

The BLM has management authority for 43.5% (57,300 km<sup>2</sup>) of the sagebrush in the study area (Fig. 1.4), comparable to the 52% of sagebrush managed by BLM nationwide (Knick et al. 2003). This pattern varied, however, among states in the WBEA area.



For example, in Wyoming, BLM manages nearly 52% of the sagebrush vegetation (45,700 km<sup>2</sup>); by contrast, BLM manages only 10.9% (530 km<sup>2</sup>) of the sagebrush in the Idaho portion of the WBEA area (Fig. 1.4). Private landowners manage the second largest percentage (37.5%) of sagebrush in the study area, totaling 49,400 km<sup>2</sup> (Fig. 1.4). The remainder is evenly divided between the FS, state lands, and “other” management entities (e.g., National Park Service, Bureau of Indian Affairs).

The percentage of sagebrush on FS-managed lands in the WBEA (6.1%) is comparable to the percentage of sagebrush across the United States that is managed by the agency (9%; Wisdom et al. 2005). Relatively higher percentages of FS-managed sagebrush were found in Idaho, with considerably lower percentages in Colorado and Wyoming. Although a small percentage of sagebrush in the study area is managed by the FS, the majority of it is mountain big sagebrush. Management considerations for mountain big sagebrush and other sagebrush taxa found at higher elevations differ from those for sagebrush found at lower, warmer sites (U.S. Bureau of Land Management 2002, Miller et al. 2011). High elevation sagebrush types are often more resistant to fire, tend to occur within more diverse plant communities than sagebrush at lower elevations, and are often seasonally important for sagebrush-associated species of concern, such as providing late brood-rearing habitat for sage-grouse (Connelly et al. 2004).

#### *Protected status of sagebrush*

Only a small percentage of the sagebrush ecosystem is permanently protected (for example, in national parks or designated wilderness areas) from alteration or conversion (Wright et al. 2001, Knick et al. 2003, Knick et al. 2011). We evaluated the relative amount of sagebrush within the WBEA area by the four land status classes commonly used by TNC and the Gap Analysis Program (GAP) in assessing degree of

TABLE 1.2. Area contained within land cover classes of the Wyoming Basins Ecoregional Assessment area.

Land cover class <sup>a</sup>	km <sup>2</sup>	%
Agriculture	15,523	4.5
Aspen	11,311	3.3
Barren	9,275	2.7
Conifer forest	89,330	25.9
Developed	2,607	0.7
Grasslands	28,748	8.3
Greasewood	1,922	0.6
Juniper	5,387	1.6
Mixed shrubs	21,035	6.1
Riparian	12,637	3.7
Sagebrush	131,573	38.1
Salt desert shrubland	12,780	3.7
Water	2,633	0.8
Wetland	592	0.2
Total	345,354	100

<sup>a</sup> For crosswalk of land cover classes from the LANDFIRE existing vegetation types map see Appendix 1.1.

protection for conservation targets (Scott et al. 1993, Crist 2000). These categories are: class 1 – areas permanently protected from conversion of natural land cover, with natural disturbance events allowed to proceed; class 2 – permanently protected as above, but where management practices or uses may degrade the natural communities; class 3 – permanently protected from conversion, but subject to resource extraction (e.g., logging, mining) and protection offered to federally listed species; and class 4 – no known mandates, either public or private, to prevent conversion of natural vegetation types (Crist 2000).

The dominant land status class for sagebrush in the WBEA was class 3 (51.1% of sagebrush), followed by class 4 (45.8%) (Figs. 1.5, 1.6). By contrast, only 1.7% of the sagebrush in the WBEA was under permanent legal protection (i.e., status class 1); sagebrush in this class is located primarily within National Park Service lands in Yel-

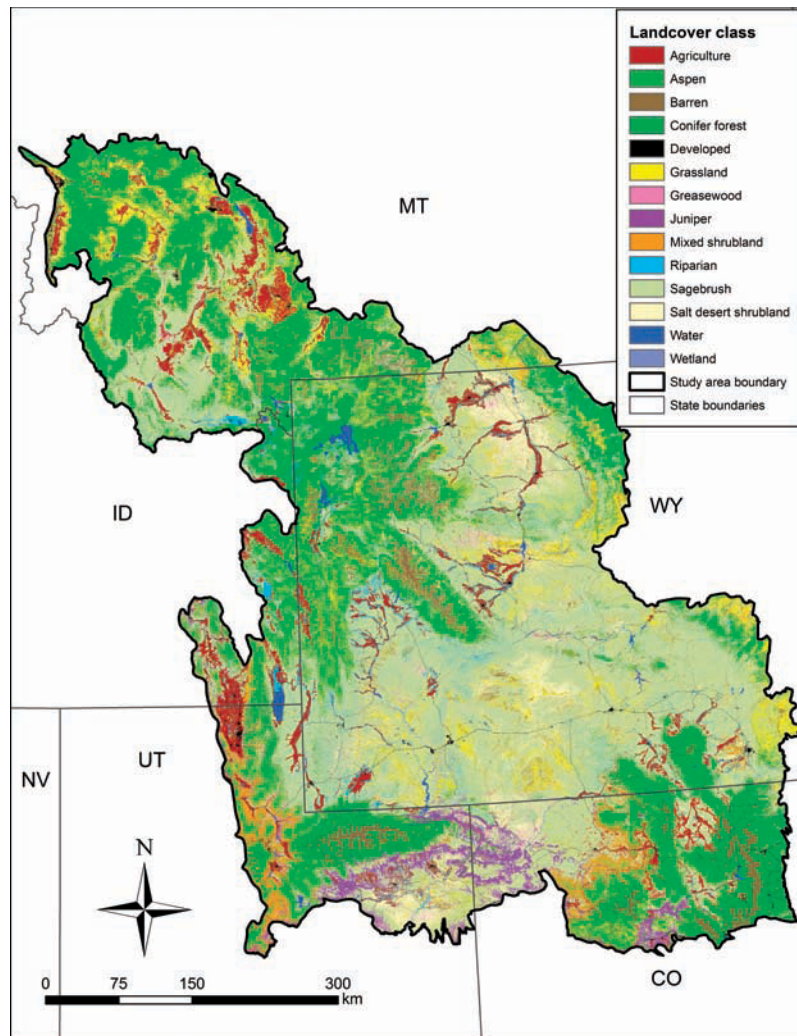


FIG. 1.3. Land cover classes within the Wyoming Basins Ecoregional Assessment area; cover types were modified from the existing vegetation type layer from LANDFIRE. See Appendix 1.1 for details on reclassification of the original map.

lowstone and Grand Teton National Parks, as well as in designated wilderness areas managed by the Forest Service (Fig. 1.6). This percentage is similar to that reported by Wright et al. (2001) for all sagebrush in the western United States. A similarly small fraction (1.4%) of sagebrush in the WBEA is in class 2. Compared to all land cover types within the study area, a disproportionately smaller percentage of sagebrush is protected (i.e., in status class 1 and

2; Fig. 1.5). Most of the sagebrush in class 4 is on privately owned lands or the Wind River Indian Reservation in central Wyoming. Therefore, multiple uses will likely continue to affect management policies related to sagebrush.

#### *Other land cover classes in the WBEA*

The second most common land cover class in the study area was “coniferous forest” (25.9%, or 89,300 km<sup>2</sup>; Table 1.2).

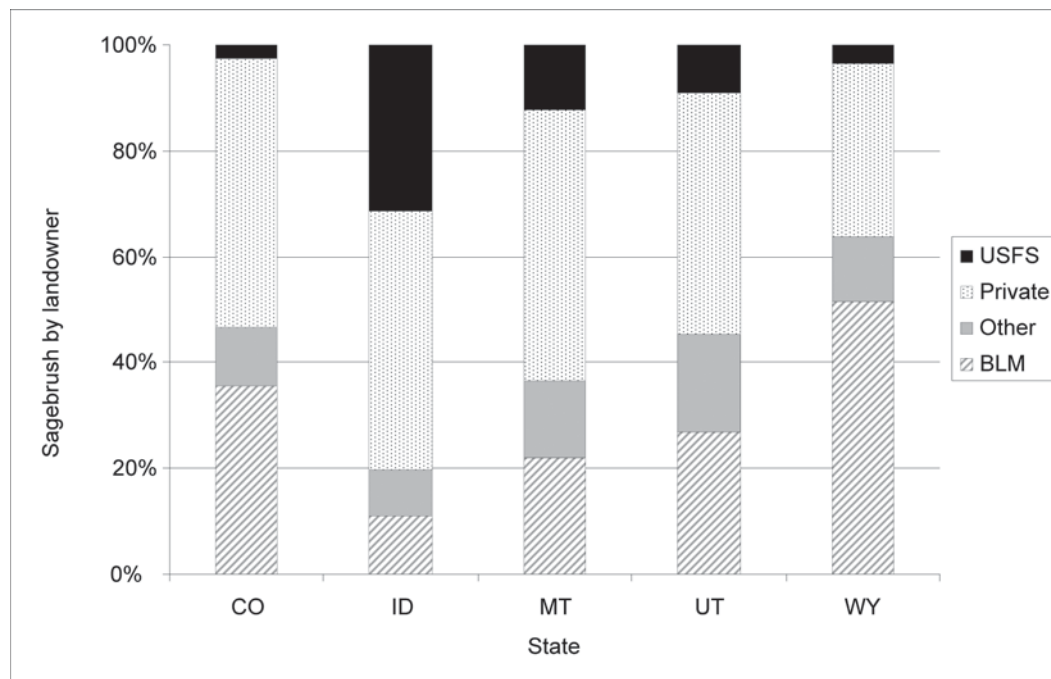


FIG. 1.4. Percentage of sagebrush by primary land management authority within states of the Wyoming Basins Ecoregional Assessment boundary.

Coniferous forest is found in mountainous and high elevation regions (e.g., Yellowstone National Park, FS wilderness areas in northeastern Utah and western Wyoming). No other land cover class spanned >10% of the study area (Table 1.2). Grasslands covered 8.3% (28,700 km<sup>2</sup>) of the study area and were most prevalent in eastern Wyoming and southwestern Montana (Fig. 1.3). The salt desert shrubland class encompassed 3.7% (12,800 km<sup>2</sup>) of the WBEA area, primarily in northcentral Wyoming, northeastern Utah, and northwestern Colorado. This class includes saltbush and a variety of other, primarily xeric, upland shrub types. Agricultural lands covered 4.5% (15,500 km<sup>2</sup>) of the WBEA area, with large blocks found in northcentral Wyoming, southeastern Idaho, and across southwestern Montana. Juniper occupied a small portion (1.6%, 5,400 km<sup>2</sup>) of the study area and was most common in Colorado, northeastern Utah, and north-

central Wyoming (Fig. 1.3). Only a small fraction (0.7%) of the study area was classified as “developed” (Table 1.2).

#### POTENTIAL THREATS TO SAGEBRUSH-ASSOCIATED SPECIES AND HABITATS IN THE WYOMING BASINS

Potential threats to habitats and species in the sagebrush ecosystem range from climate change and altered fire regimes to fragmentation by a multitude of anthropogenic disturbances (Knick et al. 2003, Connelly et al. 2004, Wisdom et al. 2005; Table 1.3). Threats previously identified within the WBEA area include: conversion of sagebrush to non-native perennial grasses, spread of exotic annual grasses, hard-rock mining, oil and gas exploration, inappropriate grazing by domestic livestock, logging, fire suppression, and expansion of recreational and residential developments (Ricketts et al. 1999, Freilich et al. 2001,

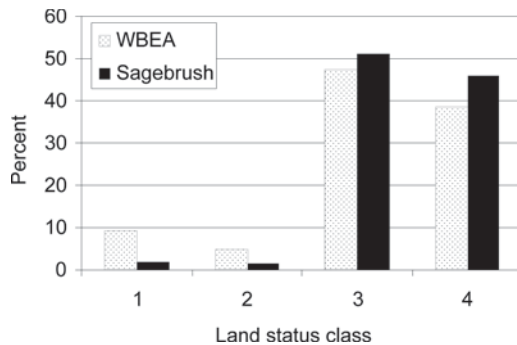


FIG. 1.5. Comparison of GAP land status class for all land cover types within the Wyoming Basins Ecoregional Assessment (WBEA) area versus only sagebrush. Land status was derived from standard GAP classifications (Crist 2000) and indicates the relative degree of protection from alteration.

Neely et al. 2001, Noss et al. 2001, Weller et al. 2002, U.S. Departments of the Interior, Agriculture, and Energy 2003). Although the level of risk posed by each threat varies geographically and temporally across the vast range of sagebrush, all of the threats listed in Table 1.3 have been documented to some extent within the WBEA. However, effects of many of these threats, especially anthropogenic disturbance, on sagebrush-associated wildlife have not been well quantified with empirical data (Freilich et al. 2001, WEST 2003). Furthermore, the synergistic effects of combined threats in the sagebrush ecosystem have not been fully investigated (Wisdom et al. 2005). The development and evaluation of predictive models to test hypotheses about cumulative effects of key threats in sagebrush ecosystems, as described in Chapters 4-10, will allow land managers to better address management actions that may influence the large landscapes of shrubland communities in the Wyoming Basins.

### Primary Threats in the Wyoming Basins Ecoregional Assessment Area

Decisions about which potential threats to address in a particular assessment may be based on any of several criteria, including: (1) spatial extent or pervasiveness of

the threat across the ecoregion, (2) capability to quantify and map the threat, (3) agreement among those conducting the assessment about the relative importance of the threat in the ecoregion, (4) available resources to address the threat, (5) timeframe required to implement effective treatments across the ecoregion, (6) costs versus benefits of addressing the threat, (7) significance of the threat in altering habitat or wildlife population dynamics, and (8) potential effects of addressing the threat on non-target species (Wisdom et al. 2005). We present below a brief summary of some of the key threats to sagebrush-associated species and their habitats in the WBEA.

#### *Climate change and drought*

There is increasing recognition of the effect of land cover change and human activities on global climate change (e.g., U.S. Environmental Protection Agency 1998, Schneider and Root 2002, Marland et al. 2003, Neilson et al. 2005, Parmesan 2006, Mawdsley et al. 2009). In Wyoming, mean temperature in Laramie has increased almost 1 C over the last 100 years, and precipitation levels have decreased by as much as 20% in parts of the state (U.S. Environmental Protection Agency 1998). Climate models for Wyoming predict an increasing frequency of extremely hot days in summer, continued increases in temperature during all seasons (e.g., 3.3 C in winter), and increasing fire frequencies (U.S. Environmental Protection Agency 1998). Estimates of future rainfall regimes are more variable, with slight decreases in summer rainfall, but increases in spring, fall, and winter precipitation (U.S. Environmental Protection Agency 1998). Precipitation in the Colorado River Basin, including southwestern Wyoming, is predicted to decrease slightly (1–6%) through the end of the century under a range of climate models (Christensen et al. 2004); however, model estimates for precipitation are highly variable, and regional patterns of precipitation may not follow more global models (Neil-

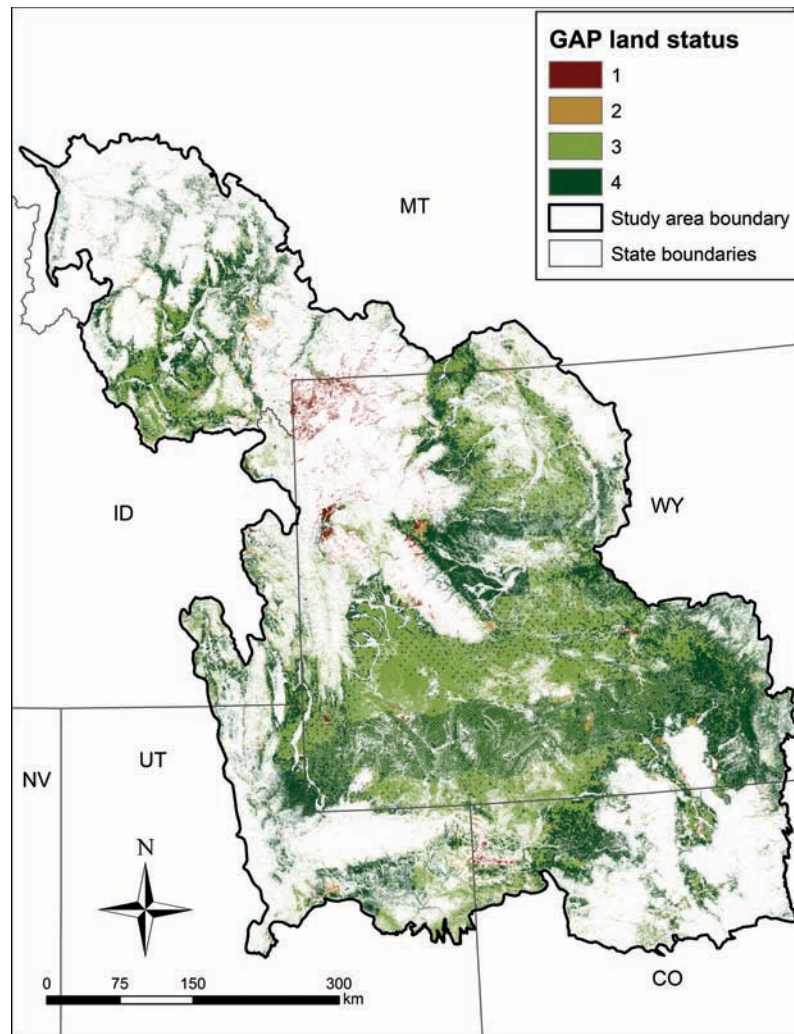


FIG. 1.6. Land status categories for sagebrush land cover types in the Wyoming Basins Ecoregional Assessment area based on the U.S. Geological Survey GAP program Protected areas database of the United States (PAS-US) <<http://gapanalysis.usgs.gov/data/padus-data/>>.

son et al. 2005). Shrublands and arid lands in the United States are predicted to decrease in spatial extent under a variety of climate change models and scenarios (e.g., Bachelet et al. 2001, Neilson et al. 2005). However, sagebrush in southwestern Wyoming is predicted to be the least affected by climate-induced losses of all sagebrush in the United States, and thus may represent a future stronghold for this ecosystem (Neilson et al. 2005). Although public lands management may have little effect

on climate change in the WBEA, awareness of the potential synergistic effects of climate change with other ecological processes and land management actions (e.g., invasions by exotic, warm-season annual grasses [Smith et al. 2000], livestock grazing) will lead to more informed decision making concerning shrublands in this area.

#### *Oil and gas development*

One threat of special urgency in the WBEA is resource extraction, especially

of natural gas and oil (Freilich et al. 2001, Neely et al. 2001, Weller et al. 2002, Thomson et al. 2005, Walker et al. 2007, Doherty et al. 2011; Ch. 3). Infrastructure associated with energy development was ranked second among threats confronting current populations of greater sage-grouse (U.S. Fish and Wildlife Service 2010). The area encompassed by the Wyoming Basins and Utah-Wyoming Rocky Mountains Ecoregions and surrounding areas in Colorado, Idaho, Montana, and Utah were identified as the center of the largest concentration of onshore oil and gas reserves in the contiguous 48 United States (U.S. Departments of the Interior, Agriculture, and Energy 2003). Moreover, the Greater Green River Basin, centered in southwestern Wyoming and northwestern Colorado (Fig. 3.1), holds the largest volume of oil and natural gas reserves among the key geologic basins inventoried for national oil and gas reserves (U.S. Departments of the Interior, Agriculture, and Energy 2003). The natural gas produced in the Intermountain West constitutes 20% of the nation's annual supply, and that region in turn holds 41% of the nation's gas reserves (Limerick et al. 2003).

Although oil, coal, and natural gas reserves in the WBEA have been tapped for decades (Weller et al. 2002, Connelly et al. 2004; Ch. 3), the development of advanced technologies to extract these reserves has led to an unprecedented proliferation of requests for permits to drill (Limerick et al. 2003, Walker et al. 2007, Kiesecker et al. 2009). Of particular concern in the WBEA is production of coal bed natural gas, also known as coal bed methane (CBM) (Braun et al. 2002, Gilbert 2002, Morton et al. 2002, Walker et al. 2007, Doherty et al. 2008). The development of technologies to profitably extract methane from water in coal bed seams has led to the drilling of thousands of wells in CBM fields, particularly in the Powder River Basin of northeastern Wyoming, which lies east of the study area boundary (Braun et al. 2002, U.S. Bureau

of Land Management 2003, Walker et al. 2007; Ch. 3). Potentially profitable CBM reserves have been identified in many other portions of the Rocky Mountain region, including eastern Utah and southwestern Wyoming (U.S. Departments of the Interior, Agriculture, and Energy 2003). The Greater Green River Basin (Fig. 3.1) is projected to contain eight times the CBM reserves of the Powder River Basin.

Among the potential environmental effects from development of oil and gas wells and associated facilities are: (1) temporary displacement of wildlife or range abandonment due to disturbance from vehicle traffic and noise associated with compressor stations and other well-related structures; (2) direct loss of habitat from road and well-pad construction; (3) habitat fragmentation from the pipelines, power lines, roads, and other facilities associated with field development; (4) invasion of exotic plant species facilitated by soil disturbance around structures and connecting corridors; (5) depletion of aquifers from the pumping and discharge of millions of gallons of water during the extraction of methane in CBM fields; (6) changes in local hydrologic regimes as water is discharged into ephemeral streams; and (7) the potential for diseases such as West Nile virus to infect both humans and wildlife, a result of the creation of hundreds of water storage ponds for discharge from CBM wells (Walker and Naugle 2010; Table 1.3).

Despite nearly a century of energy extraction amid some of the greatest concentrations of native wildlife populations – particularly ungulates – in the western United States, a paucity of published research was available on effects of these activities on native plant and animal communities in the Wyoming Basins when we began our assessment (but see Weller et al. 2002, Powell 2003, WEST 2003, Wyoming Game and Fish Department 2004, Thomson et al. 2005). Several research projects have now been initiated or completed that rigorously examine effects of oil and

TABLE 1.3. Potential threats and associated effects on habitats and species in the sagebrush ecosystem, with example references (adapted from Wisdom et al. 2005).<sup>a</sup>

Potential threat	Associated effects	Examples	Example references
Weather, climate change, and catastrophes	<i>Environmental</i> – habitat loss or degradation	Drought and more severe and frequent wildfires from increasing temperatures, escalating spread of invasive plants such as cheatgrass; drought years in close succession, leading to losses of key forbs used by sagebrush-associated species	Tausch et al. 1993, U.S. Environmental Protection Agency 1998, Bachelet et al. 2001, Miller and Eddleman 2000, Smith et al. 2000, Schneider and Root 2002, Neilson et al. 2005, Hunt et al. 2006
	<i>Population</i> – stochastic events	Catastrophic events such as floods and severe drought, contributing to extirpation of small populations	Burgman et al. 1993, Andelman et al. 2001, Morris and Doak 2002, Aldridge et al. 2008
	<i>Population</i> – altered communities	Altered phenology leading to mismatches in timing of migrant arrivals and prey availability, changes in productivity; shifts in animal and plant distributions	Walther et al. 2002
Roads, highways, and associated rights-of-way	<i>Environmental</i> – habitat loss	Direct loss of habitat from road construction	Forman et al. 1997, 2003; Forman 2000; Trombulak and Frissell 2000; Gucinski et al. 2001; Spellerberg 2002
	<i>Environmental</i> – habitat fragmentation and degradation	Fragmented habitats; accelerated spread of invasive plants	Forman et al. 1997, 2003; Braun 1998; Parendes and Jones 2000; Gucinski et al. 2001; Neely et al. 2001; Havlick 2002; Spellerberg 2002; Gaines et al. 2003; Gelbard and Belnap 2003; Gelbard and Harrison 2003; Munger et al. 2003
	<i>Population</i> – barrier to migration or road avoidance	Movement or migration barriers to less mobile species; animals may avoid traffic, other activities associated with roads	Mader 1984; Bennett 1991; Reijnen et al. 1997; Wisdom et al. 2000; Berger 2004; Spellerberg 2002; Forman et al. 2003; Gaines et al. 2003; Brock and Kelt 2004; Ingelfinger and Anderson 2004; Sawyer et al. 2005, 2007; Aldridge and Boyce 2007
	<i>Population</i> – direct and indirect mortality	Death or injury from collisions with vehicles; increased mortality from poaching due to improved access	Patterson 1952, Olendorff and Stoddart 1974, Blumton 1989, Wisdom et al. 2000, Todd 2001, Havlick 2002, Forman et al. 2003

TABLE 1.3. Continued

Potential threat	Associated effects	Examples	Example references
Intensive livestock grazing	<i>Environmental</i> – habitat degradation	Ecologically inappropriate grazing by domestic stock, especially cattle and sheep, leading to loss of native perennial grasses and forbs in understory (changes in composition and structure) and declines in forage and other habitat components for species of concern and their prey (e.g., invertebrates); trampling, leading to destruction of burrows (e.g., of burrowing owls, pygmy rabbits)	Bock et al. 1993, Saab et al. 1995, Guthrey 1996, Schroeder et al. 1999, Beck and Mitchell 2000, Miller and Eddleman 2000, Johnson and O'Neil 2001, Freilich et al. 2001, Noss et al. 2001, Holmes et al. 2003, Knick et al. 2003, Dobkin and Sauder 2004, Thines et al. 2004
Oil and natural gas field development	<i>Population</i> – direct mortality <i>Environmental</i> – habitat loss and fragmentation	Mortality from trampling of nests Fragmented habitat from pipelines, roads, well pads, and associated collection facilities; disruption of migration corridors; outright loss of habitat from roads and well pads, other facilities constructed for field development	Beck and Mitchell 2000, Holmes et al. 2003 Braun 1998, Braun et al. 2002, Weller et al. 2002, Berger 2004, Connelly et al. 2004, Sawyer et al. 2005, Thomson et al. 2005, Aldridge and Boyce 2007, Walker et al. 2007, Doherty et al. 2008
	<i>Population</i> – disturbance	Avoidance and potential abandonment of habitat due to vehicular traffic, other noise (e.g., compressor stations), and related human activity at well sites	Gillin 1989, Easterly et al. 1992, Bowles 1995, Warrick and Cypher 1998, Dyer 1999, Braun et al. 2002, Lyon and Anderson 2003, Powell 2003, Holloran 2005, Walker et al. 2007, Doherty et al. 2008
	<i>Environmental</i> – habitat degradation	Invasive species occupy disturbed sites (e.g., roadsides and well pads)	Zink et al. 1995, Parendes and Jones 2000, Trombulak and Frissell 2000, Forman et al. 2003, Gelbard and Belnap 2003, Bergquist et al. 2007
Fences	<i>Environmental</i> – habitat fragmentation	Fragmented habitats, interference with animal movement (e.g., pronghorn)	Braun 1998, Connelly et al. 2004, O'Gara and Yoakum 2004
	<i>Population</i> – direct mortality	Collisions or entanglement of animals with fences, leading to injury or death	Riddle and Oakley 1973, Fitzner 1975, Call and Maser 1985, Todd 2001, O'Gara and Yoakum 2004



TABLE 1.3. Continued

Potential threat	Associated effects	Examples	Example references
Expansion of juniper and other coniferous species in sagebrush communities	<i>Environmental</i> – habitat loss and degradation	Changes in climate and fire suppression leading to expansion of pinyon pine and juniper woodlands into sites previously occupied by sagebrush; especially mountain big sagebrush, Wyoming big sagebrush	Blackburn and Tueller 1970; Burkhardt and Tisdale 1976; Miller and Wigan 1994; Miller and Rose 1995, 1999; Commons et al. 1999; Miller and Eddleman 2000; Miller and Tausch 2001; Grove et al. 2005
Invasions of exotic plants	<i>Environmental</i> – habitat loss and degradation	Altered fire regimes and habitat degradation (e.g., from intensive livestock grazing), leading to increases in exotic plants (e.g., cheatgrass) in sagebrush ecosystems; noxious weeds accidentally introduced during reclamation of oil and gas well sites	Yensen 1981, Billings 1994, D'Antonio and Vitousek 1992, Knick 1999, West 1999, D'Antonio 2000, Miller and Eddleman 2000, Booth et al. 2003, Menakis et al. 2003, Dobkin and Sauder 2004, Bergquist et al. 2007
Reservoirs, dams, and other water developments	<i>Environmental</i> – habitat loss	Outright loss of habitat from construction of reservoirs	Braun 1998, Schroeder et al. 1999, Nachlinger et al. 2001
	<i>Environmental</i> – habitat degradation	Altered stream flows and hydrological regimes, degrading or altering habitat for aquatic and riparian species	Pierson et al. 2001, 2002, 2003
Herbicides	<i>Environmental</i> – habitat loss and fragmentation	Conversion and removal of sagebrush (especially prior to 1980), especially if native understory vegetation in relatively good condition	Best 1972; Braun and Beck 1977; Braun 1998; Connelly et al. 2000, 2004; Miller and Eddleman 2000
Power lines	<i>Environmental</i> – habitat degradation	Disturbance of vegetation and soils in power line corridors, leading to increased invasion of exotic species	Zink et al. 1995, Braun 1998
	<i>Population</i> – increased rates of predation	Poles and towers for transmission lines serving as perches or nest sites for corvids and raptors; increased potential for predation on sagebrush-associated species	Gilmer and Wiehe 1977, Knight and Kawashima 1993, Steenhof et al. 1993, Braun 1998, Boarman 2002
	<i>Population</i> – direct mortality	Collisions of birds and bats with power lines, resulting in injury or death; electrocution of perching raptors and other birds	O'Neil 1988, Harmata et al. 2001

TABLE 1.3. Continued

Potential threat	Associated effects	Examples	Example references
Communication towers	<i>Population</i> – direct mortality	Collisions of birds and bats with cell and radio towers, leading to injury and mortality	Evans and Manville 2000, Mabey and Paul 2007
Altered fire regimes	<i>Environmental</i> – habitat loss	Complete removal of sagebrush cover (i.e., type conversion), from increases in catastrophic wildfires, often related to invasions of cheatgrass, especially in Wyoming big sagebrush	Whisenant 1990, Billings 1994, D'Antonio and Vitousek 1992, Knick and Rotenberry 1997, Neely et al. 2001, Menakis et al. 2003
	<i>Environmental</i> – habitat degradation	Altered fire cycles in sagebrush ecosystems from fire suppression, resulting in changes in vegetation composition and structure, e.g. encroachment of woodlands into sagebrush	Schroeder et al. 1999, Miller and Eddleman 2000, Connelly et al. 2004
Loss of open space and housing development	<i>Environmental</i> – habitat loss	Direct loss of sagebrush from development of urban areas and “ranchettes” surrounding urban sites	Theobald et al. 1997, Braun 1998, Connelly et al. 2004, Hammer et al. 2007
	<i>Population</i> – human disturbance	Increasing human activities in urban and exurban areas, negatively affecting populations of sagebrush-associated species by displacement or abandonment; increases in predation rates on wildlife in sagebrush ecosystems from domestic dogs and cats in urban and rural settings, also from increased populations of predators (e.g., corvids) due to increased availability of food resources associated with human waste (e.g., garbage dumps).	Berry et al. 1998, Millsap and Bear 2000, Arrowood et al. 2001, Neely et al. 2001, Knick et al. 2003, Sawyer et al. 2005
Herbivory effects from wild ungulates	<i>Environmental</i> – habitat degradation	Localized, excessive herbivory by native ungulates, leading to degraded understory vegetation (e.g., changes in species composition and structure) and reduced sagebrush densities and canopy cover	McArthur et al. 1988, Singer and Renkin 1995, Wambolt and Sherwood 1999, Groves et al. 2000 (Appendix 20), Wisdom et al. 2006

TABLE 1.3. Continued

Potential threat	Associated effects	Examples	Example references
Disease transmission	<i>Population</i> – direct mortality	Disease transmission during winter season, exacerbated by human disturbance that causes concentrations of native ungulates on winter ranges; man-made water sources, esp. those changing from ephemeral to permanent, leading to increased transmission of mosquito-borne diseases such as West Nile virus	Naugle et al. 2004, 2005; Rowland 2004; Walker et al. 2004; U.S. Fish and Wildlife Service 2005, Walker and Naugle 2010
Brood parasitism by brown-headed cowbirds	<i>Population</i> – direct mortality	Parasitism from brown-headed cowbirds, a species that may increase in human-altered environments (e.g., livestock feedlots and overgrazed pastureland), affecting populations of some birds (e.g., lark and vesper sparrows)	Friedmann and Kiff 1985, Robinson et al. 1995, Shaffer et al. 2003
Recreation	<i>Environmental</i> – habitat degradation	Degraded habitats from off-road vehicle use, e.g., by increasing establishment of exotic annual grasses like cheatgrass	Berry 1980, Havlick 2002, Munger et al. 2003, Chin et al. 2004, The Wilderness Society 2006
	<i>Population</i> – disturbance	Negative response, such as displacement or nest abandonment, to recreation-related disturbance, e.g., off-road vehicles; recreational shooting of small mammals	Berry 1980, White and Thurow 1985, Braun 1987, Knight and Gutzwiller 1995, Schroeder et al. 1999, Havlick 2002, Munger et al. 2003, Wisdom et al. 2004, Barton and Holmes 2007
Conversion of sagebrush to cropland or tame pasture for livestock	<i>Environmental</i> – habitat loss	Direct removal of sagebrush cover (e.g., via brush-beating, chaining, disking, or burning) and planting with crops or non-native perennial grasses such as crested wheatgrass for livestock forage	Vale 1974, Dobler 1994, Fischer et al. 1997, Braun 1998, Knick 1999, Schroeder et al. 1999, West 1999, Miller and Eddleman 2000, Johnson and O'Neil 2001, Knick et al. 2003
	<i>Environmental</i> – habitat fragmentation	Fragmented habitats from removal of sagebrush, resulting in interference with animal movements, dispersal, or population fragmentation	Knick and Rotenberry 1995, 1997, 2000; Johnson and O'Neil 2001; Knick et al. 2003; Connelly et al. 2004
	<i>Population</i> – direct mortality	Nest and egg destruction, or directly mortality of animals, from mechanical or other methods used to remove sagebrush or cultivate lands adjacent to sagebrush	Patterson 1952

TABLE 1.3. Continued

Potential threat	Associated effects	Examples	Example references
Mine development	<i>Environmental</i> – habitat loss and fragmentation	Fragmentation and outright loss of habitat to surface mines and associated mine tailings and roads, especially coal mines	Braun 1998, Remington and Braun 1991, Ricketts et al. 1999, Neely et al. 2001
	<i>Population</i> – disturbance	Disturbance and potential abandonment of habitat due to traffic, noise, and related human activity at mine site	Bednarz 1984, Braun 1998
Pesticides	<i>Environmental</i> – habitat degradation	Decreased forage base by killing insects used as prey by sagebrush-associated species	Johnson 1987, Holmes et al. 2003
	<i>Population</i> – mortality	Direct mortality of birds and other vertebrates exposed to pesticides and indirect mortality through consumption of contaminated insects	Patterson 1952, Blus et al. 1989, Blus 1996
Saline-sodic water	<i>Environmental</i> – habitat degradation	Salinization of surrounding soils and aquatic systems from disposal of millions of barrels of water produced during coal bed methane (CBM) extraction; high mortality rates (up to 100%) in vegetation exposed to sodic water discharge	Groves et al. 2000 (Appendix 20), McBeth et al. 2003
Wind energy development	<i>Environmental</i> – habitat degradation	Increased noxious weeds in areas around turbines or along roads needed to access turbines; loss of habitat from road construction and turbine installation; avoidance by wildlife of area near turbines from association of structures with nests or perches of avian predators	Forman et al. 1997, 2003; Leddy et al. 1999; Gelbard and Belnap 2003; U.S. Bureau of Land Management 2005; Mabey and Paul 2007, Doherty et al. 2011
	<i>Population</i> – mortality	Deaths and injuries of birds and bats from collisions with wind turbines	Leddy et al. 1999, Erickson et al. 2001, Young et al. 2003, Johnson et al. 2004, Arnett et al. 2008
Collection of specimens for personal, commercial, or scientific uses	<i>Population</i> – loss of individuals from the wild	Collection of rare plants and animals, especially herpetiles such as midget faded rattlesnake, posing unknown risks to populations of these species	Wisdom et al. 2000, Freilich et al. 2001, Schlaepfer et al. 2005

TABLE 1.3. Continued

Potential threat	Associated effects	Examples	Example references
Groundwater depletion	<i>Environmental</i> – habitat degradation	Excessive groundwater withdrawal in well sites from pumping of water for CBM	Groves et al. 2000 (Appendix 20), Nachlinger et al. 2001
Grazing by feral horses	<i>Environmental</i> – habitat degradation	Loss of native perennial grasses and forbs in understory	U.S. Bureau of Land Management et al. 2000, Young and Sparks 2002, Beever 2003
Selenium and other environmental contaminants	<i>Population</i> – direct threat of mortality	Poisoning of animals from uptake of selenium in contaminated aquifers, primarily from agricultural runoff	Lemly 1997
Military training	<i>Environmental</i> – habitat fragmentation	Loss of shrubs from wildfire and destruction from tracked vehicles, leading to habitat fragmentation, from military training exercises in sagebrush ecosystems	Knick and Rotenberry 1997, Holmes and Humple 2000

<sup>a</sup> Threats are listed in order, from highest priority to lowest, based on rankings from BLM biologists working in the study area.

gas development on wildlife in sagebrush ecosystems, especially the Upper Green River Valley (contained within the WBEA area) and Powder River Basins in Wyoming. These projects incorporate radio telemetry and other techniques to evaluate potential impacts on wildlife, and include studies of greater sage-grouse (Lyon 2000, Lyon and Anderson 2003, Holloran 2005, Walker et al. 2007, Doherty et al. 2008), passerines (King and Holmes 2003, Gilbert and Chalfoun 2011), mule deer (Sawyer and Lindzey 2001, Sawyer et al. 2002, Sawyer et al. 2006), and pronghorn (Sawyer and Lindzey 2000, Sawyer et al. 2002). Long-distance migration of pronghorn in the Upper Green River Valley is severely compromised by existing and proposed development related to energy extraction in this area; furthermore, >75% of the traditional migration routes for this species in the Greater Yellowstone Ecosystem have been lost (Berger 2004).

#### *Roads and trails*

Roads, highways, trails, and off-highway vehicles affect wildlife habitats and biological systems in many ways; these effects have been succinctly described in reviews by Forman and Alexander (1998), Trombulak and Frissell (2000), Gucinski et al. (2001), Forman et al. (2003), and Gaines et al. (2003). Effects of roads and trails range from disturbance of wildlife due to vehicle traffic to the function of roads as conduits for invasive plants (see Table 1.3 for summaries of road effects in sagebrush ecosystems). Although past research focused largely on effects of roads and traffic on native ungulates, more recent research has demonstrated negative effects of roads and vehicles on a variety of taxa, such as sage-grouse (Oyler-McCance 1999, Braun et al. 2002, Lyon and Anderson 2003), passerines (Ingelfinger and Anderson 2004), small mammals (Brock and Kelt 2004), and snakes (Munger et al. 2003, Shine et al. 2004). Within the WBEA, the area affected by roads is increasing in part due to

development of oil and natural gas fields. For example, in developed well fields in Wyoming, well pads and associated roads have eliminated >200 km<sup>2</sup> of shrublands since 1900 (Ch. 3).

One analysis evaluated impacts of the transportation network in the Upper Green River Valley near Pinedale, Wyoming (Thomson et al. 2005). Extensive roading in the study area has resulted in highly fragmented habitats for species such as greater sage-grouse, elk, pronghorn, and mule deer. Within the Jonah Field, a high-density natural gas field within the analysis area, road densities exceeded 1.2 km/km<sup>2</sup> across >95% of the area. Within the entire 11,700 km<sup>2</sup> analysis area, no greater sage-grouse lek was >5 km from a road, and 80% of the crucial winter range for pronghorn had road densities >0.6 km/km<sup>2</sup> (Thomson et al. 2005).

The impacts of roads and other infrastructure associated with human activities, such as urban and exurban developments, pipelines, power lines, oil and gas wells, and compressor stations, combine to impose an “ecological footprint” on the landscape (Sanderson et al. 2002, Weller et al. 2002, Leu et al. 2008; Ch. 4). Quantification of this footprint at broad scales has been greatly advanced because of the advent of spatial analysis conducted in Geographic Information Systems (GIS) and will be an important component of future analyses of impacts of anthropogenic disturbance on native ecosystems (Leu et al. 2008).

#### *Invasive and noxious plants*

An increasingly pervasive threat to the sagebrush ecosystem in the Wyoming Basins and elsewhere is the spread of noxious and invasive plants (Hartman and Nelson 2000, The Nature Conservancy 2000, Connelly et al. 2004, Miller et al. 2011; Ch. 10). Effects of invasive plants range from displacement of native vegetation to the creation of dense stands of fine fuels that carry wildfires (Table 1.3). Fragmented and disturbed habitats, which

are increasing in the Wyoming Basins (Weller et al. 2002, Thomson et al. 2005, Ch. 3), are more susceptible to invasion by exotic plants (Pavek 1992; Knick and Rotenberry 1997, 2000; Pyke and Knick 2003).

In particular, the displacement of native sagebrush steppe by cheatgrass is one of the most dramatic changes observed in western landscapes (Billings 1994), and restoration of these communities will require tremendous resources (Knick 1999, Bunting et al. 2002, Hemstrom et al. 2002). It is estimated that greater than 50% of the sagebrush ecosystem in western North America has been invaded to some extent by cheatgrass (West 1999), with losses projected to accelerate in the future (Hemstrom et al. 2002, Suring et al. 2005, Miller et al. 2011). Cheatgrass invasion is most severe in Wyoming big sagebrush communities at lower elevations (Miller and Edelman 2000, Hemstrom et al. 2002) and is less common in cooler, more mesic regions such as Montana and Wyoming. However, increases in atmospheric CO<sub>2</sub> predicted by climate change models will benefit C<sub>3</sub> plants such as cheatgrass (Smith et al. 2000, Miller et al. 2011).

Although cheatgrass is not considered a noxious weed in Wyoming (Wyoming Weed and Pest Control 2004), it poses an increasing threat in the study area as it expands into sites where it was previously thought unable to persist, possibly a result of climate change and the high degree of phenotypic plasticity that the species demonstrates (Knight 1994, Kinter 2003). The colder climate of Wyoming compared to the Great Basin, where cheatgrass has invaded vast acreages (Young and Sparks 2002), coupled with the absence of fall precipitation in many parts of the state, may have prevented comparable spread to date (Smith 2006). Cheatgrass currently is widespread in Wyoming (Ch. 10) but is not often a monoculture. However, the Bighorn Basin and eastern Wyoming have experienced recent increases

in cheatgrass and other *Bromus* grasses (Smith 2006).

A compilation of invasive vascular plants in Wyoming listed 428 taxa, most of which originated outside North America (Hartman and Nelson 2000). The Wyoming Weed and Pest Council (2004) listed 24 plant species as noxious weeds. Knapweeds (*Centaurea* spp.), hardhead (synonym Russian knapweed) (*Acroptilon repens*), saltlover (synonym halogeton) (*Halogeton glomeratus*), slender Russian thistle (*Salsola collina*), and cheatgrass are of particular concern in Wyoming (Knight 1994, Wyoming Weed and Pest Council 2004).

#### *Other threats*

Livestock grazing is a pervasive management influence on the sagebrush ecosystem nationwide (Beck and Mitchell 2000, Crawford et al. 2004, Knick and Connelly 2011); however, we lacked consistent data on grazing seasons and stocking rates to conduct a formal analysis of its effects for our assessment. Grazing effects on sagebrush ecosystems are direct and indirect and include removal of nesting cover for birds, trampling of riparian vegetation, seeding of non-native grasses as livestock forage, increases in non-native annual grasses, and removal of sagebrush shrubs to increase forage production (Beck and Mitchell 2000, Crawford et al. 2004).

A variety of other threats impact the sagebrush ecosystem, such as transmission lines, fences, recreational use, urbanization and exurban expansion, encroachment of conifers, dams and reservoirs, and wind energy development (Table 1.3). Conversion of native shrub steppe in southwestern Montana to agriculture continues to remove habitat for sagebrush-associated species (The Nature Conservancy 2000, Dusek et al. 2002). An additional threat in this area is the encroachment of conifers, especially Douglas-fir, into mountain big sagebrush communities, resulting in reductions in sagebrush cover and habitat

for sagebrush-associated species (Grove et al. 2005).

Wind farms currently are uncommon in the WBEA area although the potential for vastly increased wind energy development exists (Doherty et al. 2011). Within the study area, wind potential (i.e., wind speed and density) is greatest in northcentral Colorado and much of western Wyoming (U.S. Bureau of Land Management 2005). Effects of wind energy development on wildlife include: (1) mortalities of bats and birds from collisions with wind turbines (Table 1.3), (2) habitat loss and fragmentation due to the infrastructure needed to develop the wind farms, (3) disturbance from human and vehicle activities at wind energy sites (Leddy et al. 1999, Erickson et al. 2001, Young et al. 2003, U.S. Bureau of Land Management 2005, Mabey and Paul 2007), (4) noise that might disrupt reproductive and foraging behaviors, and (5) habitat degradation through the introduction and spread of invasive plants.

#### LITERATURE CITED

- ALDRIDGE, C. L., AND M. S. BOYCE. 2007. Linking occurrence and fitness to persistence: a habitat-based approach for greater sage-grouse. *Ecological Applications* 17:508–526.
- ALDRIDGE, C. L., S. E. NIELSEN, H. L. BEYER, M. S. BOYCE, J. W. CONNELLY, S. T. KNICK, AND M. A. SCHROEDER. 2008. Range-wide patterns of greater sage-grouse persistence. *Diversity and distributions* 14:983–994.
- ANDELMAN, S. J., S. BEISSINGER, J. F. COCHRANE, L. GERBER, P. GOMEZ-PRIEGO, C. GROVES, J. HAUFLER, R. HOLTHAUSEN, D. LEE, L. MAGUIRE, B. NOON, K. RALLS, AND H. REGAN. 2001. Scientific standards for conducting viability assessments under the National Forest Management Act: report and recommendations of the NCEAS working group. National Center for Ecological Analysis and Synthesis, Santa Barbara, CA.
- ARNETT, E. B., W. K. BROWN, W. P. ERICKSON, J. K. FIEDLER, B. L. HAMILTON, T. H. HENRY, A. JAIN, G. D. JOHNSON, J. KERNS, R. R.

- KOFORD, C. P. NICHOLSON, T. J. O'CONNELL, M. D. PIORKOWSKI, AND R. D. TANKERSLEY. 2008. Patterns of bat fatalities at wind energy facilities in North America. *Journal of Wildlife Management* 72:61–78.
- ARROWOOD, P. L., C. A. FINLEY, AND B. C. THOMPSON. 2001. Analyses of burrowing owl populations in New Mexico. *Journal of Raptor Research* 35:362–370.
- BACHELET, D., R. P. NEILSON, J. M. LENIHAN, AND R. J. DRAPEK. 2001. Climate change effects on vegetation distribution and carbon budget in the United States. *Ecosystems* 4:164–185.
- BAILEY, R. G. 1995. Description of the ecoregions of the United States. Second edition. USDA Forest Service Miscellaneous Publication 1391.
- BAILEY, R. G. 2002. Ecoregion-based design for sustainability. Springer, New York, NY.
- BARTON, D. C., AND A.L. HOLMES. 2007. Off-highway vehicle trail impacts on breeding songbirds in northeastern California. *Journal of Wildlife Management* 71:1617–1620.
- BECK, J. L., AND D. L. MITCHELL. 2000. Influences of livestock grazing on sage-grouse habitat. *Wildlife Society Bulletin* 28:993–1002.
- BEDNARZ, J. C. 1984. The effect of mining and blasting on breeding prairie falcons (*Falco mexicanus*) in the Caballo Mountains, New Mexico. *Raptor Research* 18:16–19.
- BEEVER, E. A. 2003. Management implications of the ecology of free-roaming horses in semi-arid ecosystems of the western United States. *Wildlife Society Bulletin* 31:887–895.
- BENNETT, A. F. 1991. Roads, roadsides and wildlife conservation: a review. Pp. 99–118 in D. A. Saunders and R. J. Hobbs (editors). *Nature conservation 2: the role of corridors*. Surrey Beatty and Sons, Victoria, Australia.
- BERGER, J. 2004. The last mile: how to sustain long-distance migration in mammals. *Conservation Biology* 18:320–331.
- BERGQUIST, E., P. EVANGELISTA, T. J. STOHLGREN, AND N. ALLEY. 2007. Invasive species and coal bed methane development in the Powder River Basin, Wyoming. *Environmental Monitoring and Assessment* 128:381–394.
- BERRY, K. H. 1980. A review of the effects of off-road vehicles on birds and other vertebrates. Pp. 451–467 in R. DeGraff and N. Tilghman (editors). *Management of western forests and grasslands for nongame birds*. USDA Forest Service General Technical Report INT-86. USDA Forest Service Intermountain Research Station, Ogden, UT.
- BERRY, M. E., C. BOCK, AND S. L. HAIRE. 1998. Abundance of diurnal raptors on open space grasslands in an urbanized landscape. *Condor* 100:601–608.
- BEST, L. J. 1972. First year effects of sagebrush control on two sparrows. *Journal of Wildlife Management* 36:534–544.
- BILLINGS, W. D. 1994. Ecological impacts of cheatgrass and resultant fire on ecosystems in the western Great Basin. Pp. 22–30 in S. B. Monsen and S. G. Kitchen (editors). *Proceedings - ecology and management of annual rangelands*. USDA Forest Service General Technical Report INT-GTR-313. USDA Forest Service Intermountain Research Station, Ogden, UT.
- BLACKBURN, W. H., AND P. T. TUELLER. 1970. Pinyon and juniper invasion in black sagebrush communities in east-central Nevada. *Ecology* 51:841–848.
- BLUMTON, A. K. 1989. Factors affecting loggerhead shrike mortality in Virginia. M.S. Thesis, Virginia Polytechnic Institute and State University, Blacksburg, VA.
- BLUS, L. J. 1996. Effects of pesticides on owls in North America. *Journal of Raptor Research* 30:198–206.
- BLUS, L. J., C. S. STALEY, C. J. HENNY, G. W. PENDLETON, T. H. CRAIG, E. H. CRAIG, AND D. K. HALFORD. 1989. Effects of organophosphorus insecticides on sage-grouse in southeastern Idaho. *Journal of Wildlife Management* 53:1139–1146.
- BOARMAN, W. I., 2002. Reducing predation by common ravens on desert tortoises in the Mojave and Colorado Deserts. Prepared for the U.S. Bureau of Land Management by the U.S. Geological Survey, Western Ecological Research Center. Sacramento, CA.



- BOCK, C. E., V. A. SAAB, T. D. RICH, AND D. S. DOBKIN. 1993. Effects of livestock grazing on neotropical migratory landbirds in western North America. Pp. 296–309 in D. M. Finch and P. W. Stangel (editors). Status and management of neotropical migratory birds. USDA Forest Service General Technical Report RM-229. USDA Forest Service Rocky Mountain Research Station, Fort Collins, CO.
- BOOTH, M. S., M. M. CALDWELL, AND J. M. STARK. 2003. Overlapping resource use in three Great Basin species: implications for community invasibility and vegetation dynamics. *Journal of Ecology* 91:36–48.
- BOWLES, A. E. 1995. Responses of wildlife to noise. Pp. 109–156 in R. L. Knight and K. J. Gutzwiller (editors). *Wildlife and recreationists: coexistence through management and research*. Island Press, Washington, DC.
- BRAUN, C. E. 1987. Current issues in sage-grouse management. *Western Association of Fish and Wildlife Agencies Proceedings* 67:134–144.
- BRAUN, C. E. 1998. Sage-grouse declines in western North America: what are the problems? *Western Association of Fish and Wildlife Agencies Proceedings* 78:139–156.
- BRAUN, C. E., AND T. D. I. BECK. 1977. Effects of sagebrush spraying. *Colorado Game Research Review, 1975–1976*:33. Colorado Game, Fish, and Parks Department, Fort Collins, CO.
- BRAUN, C. E., AND T. D. I. BECK. 1996. Effects of research on sage grouse management. *Transactions of the North American Wildlife and Natural Resources Conference* 61:429–436.
- BRAUN, C. E., O. O. OEDEKOVEN, AND C. L. ALDRIDGE. 2002. Oil and gas development in western North America: effects on sagebrush steppe avifauna with particular emphasis on Sage Grouse. *Transactions of the North American Wildlife and Natural Resources Conference* 67:337–349.
- BROCK, R. E., AND D. A. KELT. 2004. Influence of roads on the endangered Stephens' kangaroo rat (*Dipodomys stephensi*): are dirt and gravel roads different? *Biological Conservation* 118:633–640.
- BUNTING, S. C., J. L. KINGERY, M. A. HEMSTROM, M. A. SCHROEDER, R. A. GRAVENMIER, AND W. J. HANN. 2002. Altered rangeland ecosystems in the interior Columbia Basin. USDA Forest Service General Technical Report PNW-GTR-553. USDA Forest Service Pacific Northwest Research Station, Portland, OR.
- BURGMAN, M. A., S. FERSON, AND H. R. AKÇAKAYA. 1993. *Risk assessment in conservation biology*. Chapman and Hall, London, UK.
- BURKHARDT, J. W., AND E. W. TISDALE. 1976. Causes of juniper invasion in southwestern Idaho. *Ecology* 76:472–484.
- CALL, M. W., AND C. MASER. 1985. *Wildlife habitats in managed rangelands - the Great Basin of southeastern Oregon*. Sage-grouse. USDA Forest Service General Technical Report PNW-GTR-187, USDA Forest Service Pacific Northwest Research Station, Portland, OR.
- CHIN, A., D. M. ROHRER, D. A. MARION, AND J. A. CLINGENPEEL. 2004. Effects of all-terrain vehicles on stream dynamics. Pp. 292–296 in J. M. Guldin (technical compiler). *Ouachita and Ozark Mountains symposium: ecosystem management research*. USDA Forest Service General Technical Report SRS-74. USDA Forest Service Southern Research Station, Asheville, NC.
- CHRISTENSEN, N. S., A. W. WOOD, N. VOISIN, D. P. LETTENMAIER, AND R. N. PALMER. 2004. The effects of climate change on the hydrology and water resources of the Colorado River Basin. *Climatic Change* 62:337–363.
- CLARK, T. W., AND M. R. STROMBERG. 1987. *Mammals in Wyoming*. Museum of Natural History, University of Kansas, Lawrence, KS.
- COMER, P., D. FABER-LANGENDOEN, R. EVANS, S. GAWLER, C. JOSSE, G. KITTEL, S. MENARD, M. PYNE, M. REID, K. SCHULZ, K. SNOW, AND J. TEAGUE. 2003. *Ecological systems of the United States: a working classification of U.S. terrestrial systems*. NatureServe, Arlington, VA.
- COMMONS, M. L., R. K. BAYDACK, AND C. E. BRAUN. 1999. Sage-grouse response to pinyon-juniper management. Pp. 238–239

- in S. B. Monsen and R. Stevens (editors). Proceedings - ecology and management of pinyon-juniper communities. USDA Forest Service Proceedings RMRS-P9. USDA Forest Service, Rocky Mountain Research Station, Fort Collins, CO.
- CONNELLY, J. W., AND C. E. BRAUN. 1997. Long-term changes in sage grouse *Centrocercus urophasianus* populations in western North America. *Wildlife Biology* 3:229–234.
- CONNELLY, J. W., S. T. KNICK, M. A. SCHROEDER, AND S. J. STIVER. 2004. Conservation assessment of greater sage-grouse and sagebrush. Western Association of Fish and Wildlife Agencies, Cheyenne, WY.
- CONNELLY, J. W., M. A. SCHROEDER, A. R. SANDS, AND C. E. BRAUN. 2000. Guidelines to manage sage grouse populations and their habitats. *Wildlife Society Bulletin* 28:967–985.
- CRAWFORD, J. A., R. A. OLSON, N. E. WEST, J. C. MOSLEY, M. A. SCHROEDER, T. D. WHITSON, R. F. MILLER, M. A. GREGG, AND C. S. BOYD. 2004. Synthesis paper: ecology and management of sage-grouse and sage-grouse habitat. *Journal of Range Management* 57:2–19.
- CRIST, P. 2000. Mapping and categorizing land stewardship. Version 2.1.1. <<http://www.gap.uidaho.edu/handbook/CompleteHandbook.pdf>> (20 September 2011).
- D'ANTONIO, C. M. 2000. Fire, plant invasions, and global changes. Pp. 65–93 in H. A. Mooney and R. J. Hobbs (editors). *Invasive species in a changing world*. Island Press, Washington, DC.
- D'ANTONIO, C. M., AND P. M. VITOUSEK. 1992. Biological invasions by exotic grasses, the grass/fire cycle, and global change. *Annual Review of Ecology and Systematics* 23:63–87.
- DOBKIN, D. S., AND J. D. SAUDER. 2004. Shrub-steppe landscapes in jeopardy. Distributions, abundances, and the uncertain future of birds and small mammals in the Intermountain West. High Desert Ecological Research Institute, Bend, OR.
- DOBLER, F. C. 1994. Washington State shrub-steppe ecosystem studies with emphasis on the relationship between nongame birds and shrub and grass cover densities. Pp. 149–161 in S. B. Monsen, and S. G. Kitchen (compilers). *Proceedings-ecology and management of annual rangelands*. USDA Forest Service General Technical Report INT-GTR-313. USDA Forest Service, Intermountain Research Station, Ogden, UT.
- DOHERTY, K. E., D. E. NAUGLE, H. COPELAND, A. POCIEWICZ, AND J. KIESECKER. 2011. Energy development and conservation trade-offs: systematic planning for greater sage-grouse in their eastern range. Pp. 505–516 in S. T. Knick and J. W. Connelly (editors). *Greater sage-grouse: ecology and conservation of a landscape species and its habitats*. *Studies in Avian Biology* 38. University of California Press, Berkeley, CA.
- DOHERTY, K. E., D. E. NAUGLE, B. L. WALKER, AND J. M. GRAHAM. 2008. Greater sage-grouse winter habitat selection and energy development. *Journal of Wildlife Management* 72:187–195.
- DUSEK, G. L., C. D. EUSTACE, AND J. G. PETERSON. 2002. The ecology and status of sage grouse in Montana. *Intermountain Journal of Science* 8:67–81.
- DYER, S. J. 1999. Movement and distribution of woodland caribou (*Rangifer tarandus caribou*) in response to industrial development in northeastern Alberta. M.S. Thesis, University of Alberta, Edmonton, AB.
- EASTERLY, T., A. WOOD, AND T. LITCHFIELD. 1992. Responses of pronghorn and mule deer to petroleum development on crucial winter range in the Rattlesnake Hills. Wyoming Game and Fish Department, Cheyenne, WY.
- ERICKSON, W. P., G. D. JOHNSON, M. D. STRICKLAND, D. P. YOUNG, JR., K. J. SERNKA, AND R. E. GOOD. 2001. Avian collisions with wind turbines: a summary of existing studies and comparisons to other sources of avian collision mortality in the United States. National Wind Coordinating Committee. Resource Document, WEST, Cheyenne, Wyoming, USA. <[http://www.west-inc.com/reports/avian\\_collisions.pdf](http://www.west-inc.com/reports/avian_collisions.pdf)> (20 September 2011).
- EVANS, W. R., AND A. M. MANVILLE, II (EDITORS). 2000. Avian mortality at communi-

- cation towers: a review of recent literature, research, and methodology. Transcripts of proceedings of the workshop on avian mortality at communication towers. Cornell University, Ithaca, NY. <<http://www.fws.gov/migratorybirds/currentbirdissues/hazards/towers/agenda.html>> (20 September 2011).
- FISCHER, R. A., W. L. WAKKINEN, K. P. REESE, AND J. W. CONNELLY. 1997. Effects of prescribed fire on movements of female sage grouse from breeding to summer ranges. *Wilson Bulletin* 109:82–91.
- FITZNER, R. E. 1975. Owl mortality on fences and utility lines. *Raptor Research* 9:55–57.
- FORMAN, R. T. T. 2000. Estimate of the area affected ecologically by the road system in the United States. *Conservation Biology* 14:31–35.
- FORMAN, R. T. T., AND L. E. ALEXANDER. 1998. Roads and their major ecological effects. *Annual Review of Ecology and Systematics* 29:207–231.
- FORMAN, R. T. T., D. S. FRIEDMAN, D. FITZHENRY, J. D. MARTIN, A. S. CHEN, AND L. E. ALEXANDER. 1997. Ecological effects of roads: towards three summary indices and an overview of North America. Pp. 40–54 in E. Canters, A. Piepers, and A. Hendriks-Heersma (editors). *Proceedings of the international conference on habitat fragmentation, infrastructure, and the role of ecological engineering*. The Netherlands Ministry of Transport, Public Works, and Water Management, Delft, NL.
- FORMAN, R. T. T., D. SPERLING, J. A. BISSONETTE, A. P. CLEVINGER, C. D. CUTSHALL, V. H. DALE, L. FAHRIG, R. FRANCE, C. R. GOLDMAN, K. HEANUE, J. A. JONES, F. J. SWANSON, T. TURRENTINE, AND T. C. WINTER. 2003. *Road ecology: science and solutions*. Island Press, Washington, DC.
- FREILICH, J., B. BUDD, T. KOHLEY, AND B. HAYDEN. 2001. Wyoming Basins ecoregional plan. The Nature Conservancy, Boulder, CO.
- FRIEDMANN, H., AND L. F. KIFF. 1985. The parasitic cowbirds and their hosts. *Proceedings of the Western Foundation of Vertebrate Zoology* 2:227–266.
- GAINES, W. L., P. H. SINGLETON, AND R. C. ROSS. 2003. Assessing the cumulative effects of linear recreation routes on wildlife habitats on the Okanogan and Wenatchee National Forests. USDA Forest Service General Technical Report PNW-GTR-586. U.S. Forest Service, Pacific Northwest Research Station, Portland, OR.
- GELBARD, J. L., AND J. BELNAP. 2003. Roads as conduits for exotic plant invasions in a semiarid landscape. *Conservation Biology* 17:420–432.
- GELBARD, J. L., AND S. HARRISON. 2003. Roadless habitats as refuges for native grasslands: interactions with soil, aspect, and grazing. *Ecological Applications* 13:404–415.
- GILBERT, M. M., AND A. D. CHALFOUN. 2011. Energy development affects populations of sagebrush songbirds in Wyoming. *Journal of Wildlife Management* 75:816–824.
- GILBERT, S. 2002. Coal bed methane: boom for industry, bane for wildlife. *Intermountain Journal of Sciences* 8:252.
- GILLIN, C. 1989. Response of elk to seismograph exploration in the Wyoming range, Wyoming. M.S. Thesis, University of Wyoming, Laramie, WY.
- GILMER, D. S., AND J. M. WIEHE. 1977. Nesting by ferruginous hawks and other raptors on high voltage powerline towers. *Prairie Naturalist* 9:1–10.
- GROVE, A. J., C. L. WAMBOLT, AND M. R. FRISINA. 2005. Douglas fir's effect on mountain big sagebrush wildlife habitats. *Wildlife Society Bulletin* 33:74–80.
- GROVES, C., L. VALUTIS, D. VOSICK, B. NEELY, K. WHEATON, J. TOUVAL, AND B. RUNNELS. 2000. Designing a geography of hope: a practitioner's handbook for ecoregional conservation planning. The Nature Conservancy, Arlington, VA. <<http://conserveonline.org/docs/2000/11/GOH2-v1.pdf>> (20 September 2011).
- GUCINSKI, H., M. H. BROOKS, M. J. FURNISS, AND R. R. ZIEMER. 2001. Forest roads: a synthesis of scientific information. U.S. Forest Service General Technical Report PNW-GTR-509. U.S. Forest Service, Pacific Northwest Research Station, Portland, OR.
- GUTHREY, F. S. 1996. Upland gamebirds. Pp. 59–69 in P. R. Krausman (editor). *Rangeland*

- wildlife. The Society for Range Management, Denver, CO.
- HAMMER, R. B., V. C. RADELOFF, J. S. FRIED, AND S. I. STEWART. 2007. Wildland-urban interface housing growth during the 1990s in California, Washington, and Oregon. *International Journal of Wildland Fire* 16:255–265.
- HANN, W. J., J. L. JONES, M. G. KARL, P. F. HESSBURG., R. E. KEANE, D. G. LONG, J. P. MENAKIS, C. H. MCNICOLL, S. G. LEONARD, R. A. GRAVENMIER, AND B. G. SMITH. 1997. Landscape dynamics of the basin. Pp. 337–1055 in T. M. Quigley and S. J. Arbelbide (technical editors). An assessment of ecosystem components in the interior Columbia basin and portions of the Klamath and Great Basins. USDA Forest Service General Technical Report PNW-GTR-405. U.S. Forest Service, Pacific Northwest Research Station, Portland, OR.
- HARMATA, A. R., M. RESTANI, G. J. MONTOPOLI, J. R. ZELENAK, J. T. ENSIGN, AND P. J. HARMATA. 2001. Movements and mortality of ferruginous hawks banded in Montana. *Journal of Field Ornithology* 72:389–398.
- HARTMAN, R. L., AND B. E. NELSON (EDITORS). 2000. Working list of invasive vascular plants of Wyoming, with vernacular names from major works. Unpublished document. University of Wyoming, Rocky Mountain Herbarium. On file: Forestry and Range Sciences Laboratory, 1401 Gekeler Lane, La Grande, OR.
- HAVLICK, D. G. 2002. No place distant: roads and motorized recreation on America's public lands. Island Press, Washington, DC.
- HEMSTROM, M. A., M. J. WISDOM, W. J. HANN, M. M. ROWLAND, B. C. WALES, AND R. A. GRAVENMIER. 2002. Sagebrush-steppe vegetation dynamics and restoration potential in the interior Columbia Basin, USA. *Conservation Biology* 16:1243–1255.
- HOLLORAN, M. J. 2005. Greater sage-grouse (*Centrocercus urophasianus*) population response to natural gas field development in western Wyoming. Ph.D. Dissertation, University of Wyoming, Laramie, WY.
- HOLMES, A. L., AND D. L. HUMPLE. 2000. After the fire: songbird monitoring at naval weapons system training facility, Boardman, Oregon. Progress report. Oregon Department of Fish and Wildlife, Heppner, OR.
- HOLMES, A. L., G. A. GREEN, R. L. MORGAN, AND K. B. LIVEZEY. 2003. Burrowing owl nest success and burrow longevity in north-central Oregon. *Western North American Naturalist* 63:244–250.
- HUNT, S., J. NEWMAN, AND G. OTIS. 2006. Threats and impacts of exotic pests under climate change: implications for Canada's forest ecosystems and carbon stocks. Biocap Research Integration Program Research Paper. University of Guelph, Guelph, ON.
- INGELFINGER, F. M., AND S. ANDERSON. 2004. Passerine response to roads associated with natural gas extraction in a sagebrush steppe habitat. *Western North American Naturalist* 64:385–395.
- JOHNSON, D. H., AND T. A. O'NEIL (MANAGING DIRECTORS). 2001. Wildlife habitat relationships in Oregon and Washington. Oregon State University Press, Corvallis, OR.
- JOHNSON, G. D. 1987. Effects of rangeland grasshopper control on sage-grouse in Wyoming. M.S. Thesis, University of Wyoming, Laramie, WY.
- JOHNSON, G. D., M. K. PERLIK, W. P. ERICKSON, AND M. D. STRICKLAND. 2004. Bat activity, composition, and collision mortality at a large wind plant in Minnesota. *Wildlife Society Bulletin* 32:1278–1288.
- JOHNSON, K. H., AND C. E. BRAUN. 1999. Viability and conservation of an exploited sage grouse population. *Conservation Biology* 13:77–84.
- JONES, A., J. CATLIN, T. LIND, J. FREILICH, K. ROBINSON, L. FLAHERTY, E. MOLVAR, J. KESSLER, AND K. DALY. 2004. Heart of the West conservation plan. Wild Utah Project, Salt Lake City, UT.
- KIESECKER, J. M., H. COPELAND, A. POCEWICZ, N. NIBBELINK, B. MCKENNEY, J. DAHLKE, M. HOLLORAN, AND D. STROUD. 2009. A framework for implementing biodiversity offsets: selecting sites and determining scale. *BioScience* 59:77–84.
- KING, A., AND A. L. HOLMES. 2003. Demographic monitoring of shrubsteppe songbirds

- in southwest Wyoming: a progress report of the 2003 field season. Point Reyes Bird Observatory, CA.
- KINTER, C. L. 2003. Comparative ecological genetics of *Bromus tectorum* (cheatgrass, downy brome) from native European, naturalized New Zealand, and invasive North American populations. Ph.D. Dissertation, Washington State University, Pullman, WA.
- KNICK, S. T. 1999. Requiem for a sagebrush ecosystem? *Northwest Science* 73:53–57.
- KNICK, S. T., AND J. W. CONNELLY (EDITORS). 2011. Greater sage-grouse: ecology and conservation of a landscape species and its habitats. *Studies in Avian Biology* 38. University of California Press, Berkeley, CA.
- KNICK, S. T., AND S. E. HANSER. 2011. Connecting pattern and process in Greater Sage-Grouse populations and sagebrush landscapes. Pp. 383–406 in S. T. Knick and J. W. Connelly (editors). Greater sage-grouse: ecology and conservation of a landscape species and its habitats. *Studies in Avian Biology* 38. University of California Press, Berkeley, CA.
- KNICK, S. T., AND J. T. ROTENBERRY. 1995. Landscape characteristics of fragmented shrubsteppe habitats and breeding passerine birds. *Conservation Biology* 9:1059–1071.
- KNICK, S. T., AND J. T. ROTENBERRY. 1997. Landscape characteristics of disturbed shrubsteppe habitats in southwestern Idaho (U.S.A.). *Landscape Ecology* 12:287–297.
- KNICK, S. T., AND J. T. ROTENBERRY. 2000. Ghosts of habitats past: contribution of landscape change to current habitats used by shrubland birds. *Ecology* 81:220–227.
- KNICK, S. T., D. S. DOBKIN, J. T. ROTENBERRY, M. A. SCHROEDER, W. M. VANDER HAEGEN, AND C. VAN RIPER, III. 2003. Teetering on the edge or too late? Conservation and research issues for avifauna of sagebrush habitats. *Condor* 105:611–634.
- KNICK, S. T., S. E. HANSER, R. F. MILLER, D. A. PYKE, M. J. WISDOM, S. P. FINN, E. T. RINKES, AND C. J. HENNY. 2011. Ecological influence and pathways of land use in sagebrush. Pp. 203–252 in S. T. Knick and J. W. Connelly (editors). Greater sage-grouse: ecology and conservation of a landscape species and its habitats. *Studies in Avian Biology* 38. University of California Press, Berkeley, CA.
- KNIGHT, D. H. 1994. Mountains and plains: the ecology of Wyoming landscapes. Yale University Press, New Haven, CT.
- KNIGHT, R. L., AND K. J. GUTZWILLER (EDITORS). 1995. Wildlife and recreationists: coexistence through management and research. Island Press, Washington, DC.
- KNIGHT, R. L., AND J. Y. KAWASHIMA. 1993. Responses of raven and red-tailed hawk populations to linear right-of-ways. *Journal of Wildlife Management* 57:266–271.
- LANDFIRE. 2007. LANDFIRE 1.0.0 existing vegetation type layer. U.S. Department of Interior, Geological Survey. <<http://landfire.cr.usgs.gov/viewer/>> (20 September 2011).
- LEDDY, K. L., K. F. HIGGINS, AND D. E. NAUGLE. 1999. Effects of wind turbines on upland nesting birds in Conservation Reserve Program grasslands. *Wilson Bulletin* 111:100–104.
- LEMELY, A. D. 1997. Environmental implications of excessive selenium: a review. *Biomedical and Environmental Sciences* 10:415–435.
- LEU, M., S. E. HANSER, AND S. T. KNICK. 2008. The human footprint in the West: a large-scale analysis of anthropogenic impacts. *Ecological Applications* 18:1119–1139.
- LIMERICK, P. N., C. PUSKA, A. HILDNER, AND E. SKOVSTED. 2003. What every westerner should know about energy. Report from the Center #4. Center of the American West, University of Colorado, Boulder, CO.
- LYON, A. G. 2000. The potential effects of natural gas development on sage-grouse near Pinedale, Wyoming. M.S. Thesis, University of Wyoming, Laramie, WY.
- LYON, A. G., AND S. H. ANDERSON. 2003. Potential gas development impacts on sage grouse nest initiation and movement. *Wildlife Society Bulletin* 31:486–491.
- MABEY, S. M., AND E. PAUL. 2007. Critical literature review: impact of wind energy and related human activities on grassland and shrubsteppe birds. The Ornithological Council, for the National Wind Coordinating Collaborative. <<http://www.nationalwind.org/asset.aspx?AssetId=164>> (17 September 2011).

- MADER, H. J. 1984. Animal habitat isolation by roads and agriculture fields. *Biological Conservation* 29:81–96.
- MARLAND, G., R. A. PIELKE, SR., M. APPS, R. AVISSAR, R. A. BETTS, K. J. DAVIS, P. C. FRUMHOFF, S. T. JACKSON, L. A. JOYCE, P. KAUPPI, J. KATZENBERGER, K. J. MACDICKEN, R. P. NEILSON, J. O. NILES, D. S. NIYOGI, R. J. NORBY, N. PENA, N. SAMPSON, AND Y. XUE. 2003. The climatic impacts of land surface change and carbon management, and the implications for climate-change mitigation policy. *Climate Policy* 3:149–157.
- MAWDSLEY, J. R., R. O'MALLEY, AND D. S. OJIMA. 2009. A review of climate-change adaptation strategies for wildlife management and biodiversity conservation. *Conservation Biology* 23:1080–1089.
- MCCARTHUR, E. D., A. C. BLAUER, AND S. C. SANDERSON. 1988. Mule deer-induced mortality of mountain big sagebrush. *Journal of Range Management* 41:114–117.
- MCBETH, I. H., K. J. REDDY, AND Q. D. SKINNER. 2003. Coalbed methane product water chemistry in three Wyoming watersheds. *Journal of the American Water Resources Association* 39:575–585.
- MCCMAHON, G., S. M. GREGONIS, S. W. WALTMAN, J. M. OMERNIK, T. D. THORSON, J. A. FREEOUF, A. H. RORICK, AND J. E. KEYS. 2001. Developing a spatial framework of common ecological regions for the conterminous United States. *Environmental Management* 28:293–316.
- MENAKIS, J. P., D. OSBORNE, AND M. MILLER. 2003. Mapping the cheatgrass-caused departure from historical natural fire regimes in the Great Basin, USA. Pp. 281–287 in P. N. Omi, and L. A. Joyce (technical editors). *Fire, fuel treatments, and ecological restoration: conference proceedings*. USDA Forest Service Proceedings RMRS-P-29. USDA Forest Service, Rocky Mountain Research Station, Fort Collins, CO.
- MILLER, R. F., AND L. L. EDDLEMAN. 2000. Spatial and temporal changes of sage-grouse habitat in the sagebrush biome. Oregon State University Agricultural Experiment Station Technical Bulletin 151. Oregon State University, Corvallis, OR.
- MILLER, R. F., AND J. A. ROSE. 1995. Historic expansion of *Juniperus occidentalis* (western juniper) in southeastern Oregon. *Great Basin Naturalist* 55:37–45.
- MILLER, R. F., AND J. A. ROSE. 1999. Fire history and western juniper encroachment in sagebrush steppe. *Journal of Range Management* 52:550–559.
- MILLER, R. F., AND R. J. TAUSCH. 2001. The role of fire in pinyon and juniper woodlands: a descriptive analysis. Pp. 15–30 in K. E. M. Galley and T. P. Wilson (editors). *Proceedings of the invasive species workshop: the role of fire in the control and spread of invasive species*. Tall Timbers Research Station Miscellaneous Publication 11.
- MILLER, R. F., AND P. E. WIGAND. 1994. Holocene changes in semiarid pinyon-juniper woodlands: responses to climate, fire, and human activities in the U.S. Great Basin. *BioScience* 44:465–474.
- MILLER, R. F., S. T. KNICK, D. A. PYKE, C. W. MEINKE, S. E. HANSER, M. J. WISDOM, AND A. L. HILD. 2011. Characteristics of sagebrush habitats and limitations to long-term conservation. Pp. 145–184 in S. T. Knick and J. W. Connelly (editors). *Greater sage-grouse: ecology and conservation of a landscape species and its habitats*. *Studies in Avian Biology* 38. University of California Press, Berkeley, CA.
- MILLER, R. F., T. SVEJCAR, AND J. A. ROSE. 2000. Western juniper succession in shrub steppe: impacts on community composition and structure. *Journal of Range Management* 53:574–585.
- MILLSAP, B. A., AND C. BEAR. 2000. Density and reproduction of burrowing owls along an urban development gradient. *Journal of Wildlife Management* 64:33–41.
- MORRIS, W. F., AND D. F. DOAK. 2002. Quantitative conservation biology: theory and practice of population viability analysis. Sinauer Associates, Sunderland, MA.
- MORTON, P., C. WELLER, AND J. THOMSON. 2002. Coal bed methane and public lands: how much and at what cost? Pp. 156–175 in G. Bryner (editor). *Coalbed methane development of the Intermountain West*. Natural

- Resources Law Center, University of Colorado Law School, Boulder, CO.
- MUNGER, J. C., B. R. BARNETT, S. J. NOVAK, AND A. A. AMES. 2003. Impacts of off-highway motorized vehicle trails on the reptiles and vegetation of the Owyhee Front. U.S. Bureau of Land Management Technical Bulletin No. 03-3. U.S. Bureau of Land Management, Idaho State Office, Boise, ID.
- NACHLINGER, J., K. SOCHI, P. COMER, G. KITTEL, AND D. DORFMAN. 2001. Great Basin: an ecoregion-based conservation blueprint. The Nature Conservancy, Reno, NV.
- NAUGLE, D. E., C. L. ALDRIDGE, B. L. WALKER, T. E. CORNISH, B. J. MOYNAHAN, M. J. HOLLORAN, K. BROWN, G. D. JOHNSON, E. T. SCHMIDTMANN, R. T. MAYER, C. Y. KATO, M. R. MATCHETT, T. J. CHRISTIANSEN, W. E. COOK, T. CREEKMORE, R. D. FALISE, E. T. RINKES, AND M. S. BOYCE. 2004. West Nile virus: pending crisis for greater sage-grouse. *Ecology Letters* 7:704–713.
- NAUGLE, D. E., C. L. ALDRIDGE, B. L. WALKER, K. E. DOHERTY, M. R. MATCHETT, J. MCINTOSH, T. E. CORNISH, AND M. S. BOYCE. 2005. West Nile virus and sage-grouse: what more have we learned? *Wildlife Society Bulletin* 33:616–623.
- NEELY, B., P. COMER, C. MORITZ, M. LAMMERT, R. RONDEAU, C. PAGUE, G. BELL, H. COPELAND, J. HUMKE, S. SPACKMAN, T. SCHULZ, D. THEOBALD, AND L. VALUTIS. 2001. Southern Rocky Mountains: an ecoregional assessment and conservation blueprint. The Nature Conservancy, USDA Forest Service, Rocky Mountain Region, Colorado Division of Wildlife, and U.S. Bureau of Land Management. Boulder, CO.
- NEILSON, R. P., J. M. LENIHAN, D. BACHELET, AND R. J. DRAPEK. 2005. Climate change implications for sagebrush ecosystem. *Transactions of the North American Wildlife and Natural Resources Conference* 70:145–159.
- NOSS, R., G. WUERHNER, K. VANCE-BORLAND, AND C. CARROLL. 2001. A biological conservation assessment for the Utah-Wyoming Rocky Mountains Ecoregion: a report to The Nature Conservancy. Conservation Science, Corvallis, OR.
- O’GARA, B. W., AND J. D. YOAKUM. 2004. Pronghorn ecology and management. University of Colorado Press, Boulder, CO.
- OLENDORFF, R. R., AND J. W. STODDART, JR. 1974. The potential for management of raptor populations in western grasslands. Pp. 44–48 in F. N. Hamerstrom, B. N. Harrell, and R. R. Olendorff (editors). *Management of raptors: proceedings of the conference on raptor conservation*, part 4. Raptor Research Report 2, Raptor Research Foundation, Vermillion, SD.
- O’NEIL, T. A. 1988. An analysis of bird electrocution in Montana. *Journal of Raptor Research* 22:27–28.
- OYLER-MCCANCE, S. J. 1999. Genetic and habitat factors underlying conservation strategies for Gunnison sage-grouse. Ph.D. Dissertation, Colorado State University, Fort Collins, CO.
- PARENDES, L. A., AND J. A. JONES. 2000. Role of light availability and dispersal in exotic plant invasion along roads and streams in the H. J. Andrews Experimental Forest, Oregon. *Conservation Biology* 14:64–75.
- PARMESAN, C. 2006. Ecological and evolutionary responses to recent climate change. *Annual Review of Ecology, Evolution, and Systematics* 37:637–669.
- PATTERSON, R. L. 1952. *The sage grouse in Wyoming*. Sage Books, Denver, CO.
- PAVEK, D. S. 1992. *Halogeton glomeratus*. In U.S. Forest Service, Rocky Mountain Research Station, Fire Sciences Laboratory (producer). *Fire Effects Information System*. <<http://www.fs.fed.us/database/feis>> (20 September 2011).
- PETERSEN, B. E. 1980. Breeding and nesting ecology of female sage grouse in North Park, Colorado. M.S. Thesis, Colorado State University, Fort Collins, CO.
- PIERSON, F. B., P. R. ROBICHAUD, AND K. E. SPAETH. 2001. Spatial and temporal effects of wildfire on the hydrology of a steep rangeland watershed. *Hydrology Proceedings* 15:2905–2916.
- PIERSON, F. B., P. R. ROBICHAUD, K. E. SPAETH, AND C. A. MOFFET. 2003. Impacts of fire on hydrology and erosion in steep mountain big

- sagebrush communities. Pp. 625–630 in K. E. Renard, S. A. McElroy, S. A. Gburek, W. J. Canfield, H. Evan, and R.L. Scott (editors). Proceedings of the First Interagency Conference on research in the Watersheds. USDA, Agricultural Research Service, Benson, AZ.
- PIERSON, F. B., K. E. SPAETH, M. E. WELTZ, AND D. H. CARLSON. 2002. Hydrologic response of diverse western rangelands. *Journal of Range Management* 55:558–570.
- POWELL, J. 2003. Distribution, habitat use patterns, and elk response to human disturbance in the Jack Morrow Hills, Wyoming. M.S. Thesis, University of Wyoming. Laramie, WY.
- PYKE, D. A., AND S. T. KNICK. 2003. Plant invaders, global change and landscape restoration. Pp. 278–288 in N. Allsopp, A. R. Palmer, S. J. Milton, K. P. Kirkman, G. I. H. Kerley, C. R. Hurt, and C. J. Brown (editors). Proceedings of the VII<sup>th</sup> International Rangeland Congress.
- REIJNEN, R., R. FOPPEN, AND G. VEEBAAS. 1997. Disturbance by traffic of breeding birds: evaluation of the effect and consideration in planning and managing road corridors. *Biodiversity and Conservation* 6:567–581.
- REMINGTON, T. E., AND C. E. BRAUN. 1985. Sage grouse food selection in winter, North Park, Colorado. *Journal of Wildlife Management* 49:1055–1061.
- REMINGTON, T. E., AND C. E. BRAUN. 1991. How surface coal mining affects sage grouse, North Park, Colorado. Proceedings of the Issues and Technology in the Management of Impacted Western Wildlife Symposium 5:128–132.
- RICKETTS, T. H., E. DINERSTEIN, D. M. OLSON, C. J. LOUCKS, W. EICHBAUM, D. DELLA SALA, K. KAVANAGH, P. HEDAO, P. T. HURLEY, K. M. CARNEY, R. ABELL, AND S. WALTERS. 1999. Terrestrial ecoregions of North America: a conservation assessment. Island Press, Washington, DC.
- RIDDLE, P., AND C. OAKLEY. 1973. The impact of a severe winter and fences on antelope mortality in southcentral Wyoming. Proceedings of the Western Association of State Game and Fish Commissioners 53:174–188.
- ROBINSON, S. K., S. I. ROTHSTEIN, M. C. BRITTINGHAM, L. J. PETIT, AND J. A. GRZYBOWSKI. 1995. Ecology and behavior of cowbirds and their impact on host populations. Pp. 428–460 in T. E. Martin and D. M. Finch (editors). Ecology and management of Neotropical migratory birds. Oxford University Press, NY.
- ROSCOE, J. W. 2002. Sage grouse movements in southwestern Montana. *Intermountain Journal of Science* 8:94–104.
- ROWLAND, M. M. 2004. Effects of management practices on grassland birds: greater sage-grouse. U.S. Geological Survey, Northern Prairie Wildlife Research Center, Jamestown, ND. <<http://www.npwrc.usgs.gov/resource/literatr/grasbird>> (20 September 2011).
- SAAB, V. A., C. E. BOCK, T. D. RICH, AND D. S. DOBKIN. 1995. Livestock grazing effects in western North America. Pp. 311–353 in T. E. Martin and D. M. Finch (editors). Ecology and management of Neotropical migratory birds: a synthesis and review of critical issues. Oxford University Press, New York, NY.
- SANDERSON, E. W., M. JAITEH, M. A. LEVY, K. H. REDFORD, A. V. WANNEBO, AND G. WOOLMER. 2002. The human footprint and the last of the wild. *BioScience* 52:891–904.
- SAWYER, H., AND F. LINDZEY. 2000. The Jackson Hole pronghorn study. Wyoming Cooperative Fish and Wildlife Research Unit, Laramie, WY.
- SAWYER, H., AND F. LINDZEY. 2001. Sublette mule deer study. Wyoming Cooperative Fish and Wildlife Research Unit, Laramie, WY.
- SAWYER, H., F. LINDZEY, AND D. MCWHIRTER. 2005. Mule deer and pronghorn migration in western Wyoming. *Wildlife Society Bulletin* 33:1266–1273.
- SAWYER, H., F. LINDZEY, D. MCWHIRTER, AND K. ANDREWS. 2002. Potential effects of oil and gas development on mule deer and pronghorn populations in western Wyoming. *Transactions of the North American Wildlife and Natural Resources Conference* 67:350–365.
- SAWYER, H., R. M. NIELSON, F. LINDZEY, AND L. L. McDONALD. 2006. Winter habitat selection of mule deer before and during de-



- velopment of a natural gas field. *Journal of Wildlife Management* 70:396–403.
- SAWYER, H., R. M. NIELSON, F. G. LINDZEY, L. KEITH, J. H. POWELL, AND A. A. ABRAHAM. 2007. Habitat selection of Rocky Mountain Elk in a nonforested environment. *Journal of Wildlife Management* 71:868–874.
- SCHLAEPFER, M. A., C. HOOVER, AND C. K. DODD, JR. 2005. Challenges in evaluating the impact of the trade in amphibians and reptiles on wild populations. *BioScience* 55:256–264.
- SCHNEIDER, S. H., AND T. L. ROOT (EDITORS). 2002. *Wildlife responses to climate change: North American case studies*. Island Press, Washington, DC.
- SCHROEDER, M. A., J. R. YOUNG, AND C. E. BRAUN. 1999. Sage-grouse (*Centrocercus urophasianus*). Account 425 in A. Poole, and F. Gill (editors). *The birds of North America*, The Academy of Natural Sciences, Philadelphia, PA, and The American Ornithologists' Union, Washington, DC.
- SCOTT, J. M., F. DAVIS, B. CSUTI, R. NOSS, B. BUTTERFIELD, C. GROVES, H. ANDERSON, S. CAICCO, F. D'ERCHIA, T. C. EDWARDS, JR., J. ULLIMAN, AND R. G. WRIGHT. 1993. Gap analysis: a geographic approach to protection of biological diversity. *Wildlife Monograph* No. 123.
- SHAFFER, J. A., C. M. GOLDADE, M. F. DINKINS, D. H. JOHNSON, L. D. IGL, AND B. R. EULISS. 2003. Brown-headed cowbirds in grasslands: their habitats, hosts, and response to management. *Prairie Naturalist* 35:145–186.
- SHINE, R., M. LEMASTER, M. WALL, T. LANGKILDE, AND R. MASON. 2004. Why did the snake cross the road? Effects of roads on movement and location of mates by garter snakes (*Thamnophis sirtalis parietalis*). *Ecology and Society* 9:9. <<http://www.ecologyandsociety.org/vol9/iss1/art9/>> (20 September 2011).
- SINGER, F. J., AND R. A. RENKIN. 1995. Effects of browsing by native ungulates on the shrubs in big sagebrush communities in Yellowstone National Park. *Great Basin Naturalist* 55:201–212.
- SMITH, M. A. 2006. Cheatgrass ecology and management in Wyoming. *WYO Range Facts* MP-111.06. University of Wyoming Cooperative Extension Service, Laramie, WY.
- SMITH, S. D., T. E. HUXMAN, S. F. ZITZER, T. N. CHARLET, D. C. HOUSMAN, J. S. COLEMAN, L. K. FENSTERMAKER, J. R. SEEMAN, AND R. S. NOWAK. 2000. Elevated CO<sub>2</sub> increases productivity and invasive species success in an arid ecosystem. *Nature* 408:79–82.
- SPELLERBERG, I. F. 2002. Ecological effects of roads. *Land Reconstruction and Management*, 2. Science Publishers, Enfield, NH.
- STEENHOF, K. M., N. KOCHERT, AND J. A. ROPPE. 1993. Nesting by raptors and common ravens on electrical transmission line towers. *Journal of Wildlife Management* 57:271–281.
- SURING, L. H., M. J. WISDOM, R. J. TAUSCH, R. F. MILLER, M. M. ROWLAND, L. SCHUECK, AND C. W. MEINKE. 2005. Modeling threats to sagebrush and other shrubland communities. Pp. 114–149 in M. J. Wisdom, M. M. Rowland, and L. H. Suring (editors). *Habitat threats in the sagebrush ecosystem: methods of regional assessment and applications in the Great Basin*. Alliance Communication Group, Lawrence, KS.
- TAUSCH, R. J., AND C. L. NOWAK. 2000. Influences of Holocene climate and vegetation changes on present and future community dynamics. *Journal of Arid Land Studies* 10S:5–8.
- TAUSCH, R. J., P. E. WIGAND, AND J. W. BURKHARDT. 1993. Viewpoint: plant community thresholds, multiple steady states, and multiple successional pathways; legacy of the Quaternary? *Journal of Range Management* 46:439–447.
- THE NATURE CONSERVANCY. 2000. Middle Rockies-Blue Mountains ecoregional conservation plan. Middle Rockies-Blue Mountains Planning Team. The Nature Conservancy, Arlington, VA.
- THE NATURE CONSERVANCY. 2008. TNC terrestrial ecoregions. Unpublished Data. The Nature Conservancy, Arlington, VA. <<http://conserveonline.org/workspaces/ecoregional.shapefile/>> (20 September 2011).
- THE WILDERNESS SOCIETY. 2006. Addressing the ecological effects of off-road vehicles (ORVs). *Science and Policy Brief* 3:1–16.

- THEOBALD, D. M., J. R. MILLER, AND N. T. HOBBS. 1997. Estimating the cumulative effects of development on wildlife habitat. *Landscape and Urban Planning* 39:25–36.
- THINES, N. J. S., L. A. SHIPLEY, AND R. D. SAYLER. 2004. Effects of cattle grazing on ecology and habitat of Columbia Basin pygmy rabbits (*Brachylagus idahoensis*). *Biological Conservation* 119:525–534.
- THOMSON, J. L., T. S. SCHAUB, N. W. CULVER, AND P. C. AENGST. 2005. Wildlife at a crossroads: energy development in western Wyoming. Effects of roads on habitat in the Upper Green River Valley. The Wilderness Society, Washington, DC.
- TODD, D. L. 2001. Dispersal patterns and post-fledging mortality of juvenile burrowing owls in Saskatchewan. *Journal of Raptor Research* 35:282–287.
- TROMBULAK, S. C., AND C. A. FRISSELL. 2000. Review of ecological effects of roads on terrestrial and aquatic communities. *Conservation Biology* 14:18–30.
- U.S. BUREAU OF LAND MANAGEMENT. 2002. Management considerations for sagebrush (*Artemisia*) in the western United States: a selective summary of current information about the ecology and biology of woody North American sagebrush taxa. U.S. Bureau of Land Management, Washington, DC.
- U.S. BUREAU OF LAND MANAGEMENT. 2003. Final Environmental Impact Statement and proposed plan amendment for the Powder River Basin oil and gas project, WY-070-02-065. U.S. Department of Interior, Bureau of Land Management, Buffalo Field Office, Buffalo, WY. BLM/WY/PL-03/004+1310.
- U.S. BUREAU OF LAND MANAGEMENT. 2005. Final Programmatic Environmental Impact Statement on wind energy development on BLM-administered lands in the western United States. FES-05-11. <<http://windeis.anl.gov/>> (20 September 2011).
- U.S. BUREAU OF LAND MANAGEMENT, U.S. FISH AND WILDLIFE SERVICE, U.S. FOREST SERVICE, OREGON DEPARTMENT OF FISH AND WILDLIFE, AND OREGON DEPARTMENT OF STATE LANDS. 2000. Greater sage-grouse and sagebrush-steppe ecosystems: management guidelines. U.S. Bureau of Land Management, Portland, OR.
- U.S. DEPARTMENTS OF THE INTERIOR, AGRICULTURE, AND ENERGY. 2003. Scientific inventory of onshore federal lands' oil and gas resources and reserves and the extent and nature of restrictions or impediments to their development. BLM/WO/GI-03/002+3100. In compliance with the Energy Policy and Conservation Act Amendments of 2000, P.L. 106-469 §604.
- U.S. ENVIRONMENTAL PROTECTION AGENCY. 1998. Climate change and Wyoming. EPA 236-F-98-007n.
- U.S. FISH AND WILDLIFE SERVICE. 2005. Endangered and threatened wildlife and plants; 12-month finding for petitions to list the Greater sage-grouse as threatened or endangered; proposed rule. *Federal Register* 70:2244–2282.
- UNITED STATES DEPARTMENT OF THE INTERIOR. 2010. Endangered and threatened wildlife and plants; 12-month findings for petitions to list the greater sage-grouse (*Centrocercus urophasianus*) as threatened or endangered. *Federal Register* 73:13910-14014.
- U.S. GEOLOGICAL SURVEY. 2001. SAGEMAP: a GIS database for sage-grouse and shrub-steppe management in the Intermountain West. <<http://SAGEMAP.wr.usgs.gov>> (20 September 2011).
- VALE, T. R. 1974. Sagebrush conversion projects: an element of contemporary environmental change in the western United States. *Biological Conservation* 6:274–284.
- WALKER, B. L., AND D. E. NAUGLE. 2011. West Nile Virus ecology in sagebrush habitat and impacts on greater sage-grouse populations. Pp. 127–146 in S. T. Knick and J. W. Connelly (editors). *Greater sage-grouse: ecology and conservation of a landscape species and its habitats*. *Studies in Avian Biology* 38. University of California Press, Berkeley, CA.
- WALKER, B. L., D. E. NAUGLE, AND K. E. DOHERTY. 2007. Greater sage-grouse population response to energy development and habitat loss. *Journal of Wildlife Management* 71:2644–2654.

- WALKER, B. L., D. E. NAUGLE, K. E. DOHERTY, AND T. E. CORNISH. 2004. From the field: outbreak of West Nile virus in greater sage-grouse and guidelines for monitoring, handling, and submitting dead birds. *Wildlife Society Bulletin* 32:1000–1006.
- WALTHER, G., E. POST, P. CONVEY, A. MENZEL, C. PARMESAN, T. J. C. BEEBEE, J. FROMENTIN, O. HOEGH-GULDBERG, AND F. BAIRLEIN. 2002. Ecological responses to recent climate change. *Nature* 416:389–395.
- WAMBOLT, C. L., AND H. W. SHERWOOD. 1999. Sagebrush response to ungulate browsing in Yellowstone. *Journal of Range Management* 52:363–369.
- WARRICK, G. D., AND B. L. CYPHER. 1998. Factors affecting the spatial distribution of San Joaquin kit foxes. *Journal of Wildlife Management* 62:707–717.
- WELLER, C., J. THOMSON, P. MORTON, AND G. APLET. 2002. Fragmenting our lands: the ecological footprint from oil and gas development. The Wilderness Society, Washington, DC. <<http://wilderness.org/content/fragmenting-our-lands>> (20 September 2011).
- WEST, N. E. 1999. Managing for biodiversity of rangelands. Pp. 101–126 in W. W. Collins and C. O. Qualset (editors). *Biodiversity in agroecosystems*. CRC Press, Boca Raton, FL.
- WEST. 2003. An evaluation of the 1988 BLM Pinedale Resource Management Plan, 2000 BLM Pinedale Anticline Final EIS, and recommendations for the current revision of the Pinedale Resource Management Plan. Final report. WEST, Laramie, WY.
- WHISENANT, S. G. 1990. Changing fire frequencies on Idaho's Snake River Plains: ecological and management implications. Pp. 4–10 in E. D. McArthur, E. M. Romney, S. D. Smith, and P. T. Tueller (compilers). *Proceedings - Cheatgrass invasion, shrub die-off, and other aspects of shrub biology and management*. USDA Forest Service General Technical Report INT-GTR-276. USDA Forest Service Intermountain Research Station, Ogden, UT.
- WHITE, C. M., AND T. L. THUROW. 1985. Reproduction of ferruginous hawks exposed to controlled disturbance. *Condor* 87:14–22.
- WISDOM, M. J., A. A. AGER, H. K. PREISLER, N. J. CIMON, AND B. K. JOHNSON. 2004. Effects of off-road recreation on mule deer and elk. *Transactions of the North American Wildlife and Natural Resources Conference* 69:531–550.
- WISDOM, M. J., R. S. HOLTHAUSEN, B. C. WALES, C. D. HARGIS, V. A. SAAB, D. C. LEE, W. J. HANN, T. D. RICH, M. M. ROWLAND, W. J. MURPHY, AND M. R. EAMES. 2000. Source habitats for terrestrial vertebrates of focus in the interior Columbia basin: broad-scale trends and management implications. USDA Forest Service General Technical Report PNW-GTR-485. USDA Forest Service, Pacific Northwest Research Station, Portland, OR.
- WISDOM, M. J., M. M. ROWLAND, AND L. H. SURRING (EDITORS). 2005. *Habitat threats in the sagebrush ecosystem: methods of regional assessment and applications in the Great Basin*. Alliance Communications Group, Lawrence, KS.
- WISDOM, M. J., M. VAVRA, J. M. BOYD, M. A. HEMSTROM, A. A. AGER, AND B. K. JOHNSON. 2006. Understanding ungulate herbivory – episodic disturbance effects on vegetation dynamics: knowledge gaps and management needs. *Wildlife Society Bulletin* 34:283–292.
- WRIGHT, R. G., J. M. SCOTT, S. MANN, AND M. MURRAY. 2001. Identifying unprotected and potentially at risk plant communities. *Biological Conservation* 98:97–106.
- WYOMING GAME AND FISH DEPARTMENT. 2004. *Recommendations for development of oil and gas resources within crucial and important wildlife habitats*. Wyoming Game and Fish Department, Cheyenne, WY.
- WYOMING WEED AND PEST COUNCIL. 2004. Wyoming Weed and Pest Control Act designated list. <<http://www.wyoweed.org>> (20 September 2011).
- YENSEN, D. L. 1981. The 1900 invasion of alien plants into southern Idaho. *Great Basin Naturalist* 41:176–183.
- YOUNG, D. P., JR., W. P. ERICKSON, R. E. GOOD, M. D. STICKLAND, AND G. D. JOHNSON. 2003. Final report: avian and bat mortality associated with the initial phase of the Foote Creek

Rim Windpower Project, Carbon County, Wyoming. Western Ecosystems Technology, Cheyenne, WY.

YOUNG, J. A., AND B. A. SPARKS. 2002. Cattle in the cold desert: expanded version. University of Nevada Press, Reno, NV.

ZABLAN, M. A., C. E. BRAUN, AND G. C. WHITE. 2003. Estimation of greater sage-grouse survival in North Park, Colorado. *Journal of Wildlife Management* 67:144–154.

ZINK, T. A., M. F. ALLEN, B. HEINDL-TENBUREN, AND E. B. ALLEN. 1995. The effect of a disturbance corridor on an ecological reserve. *Restoration Ecology* 3:304–310.

## **APPENDIX 1.1**

Crosswalk between existing vegetation types (mapped as ecological systems [Comer et al. 2003]) in LANDFIRE existing vegetation type (LANDFIRE 2007) and: (1) vegetation maps used to develop Wyoming Basins Ecoregional Assessment (WBEA) wildlife and invasive species models; (2) summary maps used for Chapter 1 tables and figures; and (3) vegetation maps used for Chapter 3 tables and figures. This appendix is archived electronically and can be downloaded at the following URL: <http://sagemap.wr.usgs.gov/wbea.aspx>.