

FINAL REPORT OF THE  
WESTWARD FLEET COOPERATIVE  
YEAR 2010

PREPARED FOR:

NORTH PACIFIC FISHERY MANAGEMENT COUNCIL

JANUARY 26, 2011

PREPARED BY:

NATURAL RESOURCES CONSULTANTS, INC.  
SEATTLE, WASHINGTON

POINT OF CONTACT:

STEVE HUGHES (206) 285-3480

**FINAL REPORT OF THE  
WESTWARD FLEET COOPERATIVE  
YEAR 2010**

**Presented to the  
North Pacific Fishery Management Council  
JANUARY 26, 2011**

## TABLE OF CONTENTS

	Page
INTRODUCTION .....	1
WESTWARD FLEET MEMBER VESSELS AND CO-OP MANAGEMENT.....	1
WFC BERING SEA POLLOCK ALLOCATION, TRANSFERS AND CATCH .....	3
OUTSIDE WESTWARD PROCESSOR DELIVERIES.....	4
BYCATCH IN THE BERING SEA POLLOCK FISHERY .....	4
SIDEBOARD LIMITATIONS, ALLOCATIONS AND CATCHES .....	5
DIRECTED BERING SEA COD AND GULF POLLOCK FISHERY .....	6
CATCHES BY GULF SIDEBOARD EXEMPT MEMBER VESSELS.....	6
WFC PROHIBITED SPECIES CATCH TOTALS .....	7
WFC MONITORING AND ENFORCEMENT .....	7
EXHIBITS .....	8-20
ATTACHMENT 1	

## LIST OF EXHIBITS

	<b>Page</b>
Exhibit 1. Schematic of Westward Fleet Cooperative operations, 2010.....	8
Exhibit 2. Percent distribution of 2010 Bering Sea “inshore pollock allocation” between the seven inshore AFA pollock cooperatives.....	9
Exhibit 3. Westward Fleet Cooperative member vessel initial pollock allocations expressed as a percentage of the co-op total, as a percentage of the Bering Sea inshore directed pollock fishery, and in metric tons for 2010. ....	10
Exhibit 4. Westward Fleet Cooperative member vessel final Bering Sea directed pollock allocations for 2010 after within co-op transfers and trades.....	11
Exhibit 5. Comparison of Westward Fleet Cooperative member vessels directed Bering Sea pollock catches with final allocations, 2010. ....	12
Exhibit 6. Directed pollock fishing catch and bycatch and PSC's for the Westward Fleet Cooperative member vessels, 2010.....	13
Exhibit 7. BSAI sideboard limits and aggregate catch by the Westward Fleet Cooperative member vessels, 2010. ....	14
Exhibit 8. GOA sideboard limits and aggregate catch by the Westward Fleet Cooperative member vessels, 2010. ....	15
Exhibit 9. Comparison of Westward Fleet Cooperative member vessels directed Bering Sea Pacific cod catches with final allocations, 2010. ....	16
Exhibit 10. Directed Pacific cod fishing catch and bycatch for the Westward Fleet Cooperative member vessels, 2010. ....	17
Exhibit 11. Transfers of Westward Fleet Cooperative Gulf of Alaska pollock sideboard limits to other catcher vessel co-ops, 2010. ....	18
Exhibit 12. Westward Fleet Cooperative vessel-by-vessel prohibited species catch, 2010. ....	19
Exhibit 13. Westward Fleet Cooperative vessel-by-vessel total groundfish catch (landed and discarded), 2010.....	20

**FINAL REPORT OF THE  
WESTWARD FLEET COOPERATIVE  
YEAR 2010**

**Presented to the  
North Pacific Fishery Management Council  
January 26, 2011**

INTRODUCTION

Westward Fleet Cooperative (WFC) is pleased to submit this document and results of their 2010 Bering Sea fishery to the North Pacific Fishery Management Council (NPFMC) in compliance with annual reporting requirements of the 1998 American Fisheries Act (AFA).

Year 2010 was the eleventh year of WFC operations under the AFA. The Westward fleet was managed and operated during 2010 following the successful model established during the previous ten year's fisheries—basically without change. This document format and 13 exhibits herein reporting WFC co-op members, management, allocations, catches, sideboard limits, prohibited species catches and enforcement is also consistent with WFC's earlier years reporting to the NPFMC. We believe this reporting format and detail is both in keeping with AFA reporting requirements and provides easy comparison to the prior year results.

WESTWARD FLEET MEMBER VESSELS AND CO-OP MANAGEMENT

Managing members representing 11 catcher vessels signed their WFC co-op membership agreement addendum for the 2010 fishing year on December 1, 2009, which enabled them to operate under the laws of the AFA in a fishery cooperative delivering pollock to Westward Seafood Inc., through the 2010 fishing season (Attachment 1) under terms of these agreements. The 2010 managing member owners and their respective vessels are listed below:

F. Gregory Baker, Managing Member

- Viking Limited Partnership F/V *Viking* 130 ft LOA
- Alaskan Command LLC, F/V *Alaskan Command* 185 ft LOA
- Westward Limited Partnership, F/V *Westward I* 127 ft LOA
- Pacific Knight LLC, F/V *Pacific Knight* 165 ft LOA
- Ocean Dynasty Limited Partnership, F/V *Chelsea K* 149 ft LOA

John and Robert Dooley, Managing Member

- Pacific Prince LLC, F/V *Pacific Prince* 148 ft LOA
- Caitlin Ann LLC, F/V *Caitlin Ann* 104 ft LOA

Donald Johnson, Managing Member, Hickory Wind LLC

- F/V *Hickory Wind* 104 ft LOA

Dan Green, Managing Member, Wa'atch, Inc.

- F/V *Alyeska* 125 ft LOA

Bob Desautel, Managing Member, Dona Martita LLC

- F/V *Arctic Wind* 123 ft LOA
- F/V *Dona Martita* 165 ft LOA

Co-op management and administration continued during 2010 basically unchanged from management and administration of the prior co-op years (Exhibit 1). Mr. Robert Dooley continued to serve as the president of WFC and Mr. Tim Cusick served as the co-op coordinator. Coordination of information on allocations, transfers, pollock catches, sideboard catches and prohibited species catches between the Westward plant in Dutch Harbor, the member vessels, Sea State, the Inter co-op Manager and the National Marine Fisheries Service all continued during 2010 as established in year 2000 and as conducted in 2001 through 2009.

## WFC BERING SEA POLLOCK ALLOCATION, TRANSFERS AND CATCH

In 2010, the initial pollock allocation to WFC represented 18.488% of the AFA inshore-directed pollock allocation. WFC was the third largest tonnage co-op of the seven AFA inshore co-ops (Exhibit 2). WFC's 11 member vessels received AFA Bering Sea pollock allocations that totaled 66,350 mt. This co-op allocation was distributed among the 11 member vessels. Exhibit 3 provides details of the 11 vessel's initial pollock allocations. Individual vessel Bering Sea pollock allocations are expressed in tonnage, expressed as a percentage of the WFC total allocation and expressed as a percentage of the 2010 inshore directed pollock fishery.

Within the WFC, 10 of the 11 member vessels transferred pollock allocations among themselves. Two member vessels, *F/V Pacific Knight*, and *F/V Alyeska* transferred essentially all of their allocation to other member vessels and remained inactive in the Bering pollock fishery during 2010. Exhibit 4 identifies the transfers of Bering Sea pollock within the co-op by member vessel and the resulting final allocations to member vessels after transfers were completed. The final allocations shown in Exhibit 4 represented tonnages of Bering Sea pollock available to member vessels for harvesting during the 2010 fishing seasons.

Individual WFC member vessels directed Bering Sea pollock catches by the nine vessels that operated are provided in Exhibit 5 and are compared to their respective final pollock allocations. The WFC total directed Bering Sea pollock catch of their co-op's allocation totaled 66,337.216 mt. Of this total catch, 59,616.424 mt was delivered by WFC vessels and 5,720.792 mt was delivered by two non-WFC vessels (Amendment 69 contract delivery). WFC total pollock deliveries were 99.9% of WFC pollock allocation.

## OUTSIDE WESTWARD PROCESSOR DELIVERIES

Member vessels delivered all WFC pollock catch to the co-op's affiliated processor--Westward Seafoods, Inc. Accordingly, WFC member vessels were in compliance with AFA Section (210)(b)(6), which provides that up to 10% of the pollock harvested within a co-op, can be delivered to processors other than the co-op's affiliated processor.

## BYCATCH IN THE BERING SEA POLLOCK FISHERY

Bycatch of other groundfish, herring, halibut, crab and salmon from the directed Bering Sea pollock fishery is detailed by member vessel in Exhibit 6. Pollock represented 99.1% of the catch of pollock plus all other groundfish.

Further detail of salmon bycatch in the directed Bering Sea pollock fishery is reported for WFC in 2010 to meet additional reporting requirements implemented in 2008 under Amendment 84 (salmon bycatch ICA). Specifically, Exhibit 6 summarizes the seasonal (A and B) catches of Chinook and chum salmon (other salmon), and the number of appearances of each vessel on the "dirty 20" lists for both salmon species. To appear on the "dirty 20" list, a vessel must have exceeded the salmon bycatch base rate for that weekly period and have been among the top 20 vessels with the highest salmon bycatch rate for that weekly period.

We have been advised of a new reporting requirement that continues into 2010 which deals with estimated numbers of salmon avoided by vessels as a result of vessels relocating fishing effort away from salmon savings areas. We understand that this salmon savings analysis will be calculated by industry sector and presented in the Inter-coop Report rather than in each individual cooperative report.



Regarding the new compliance audit reporting requirement dealing with vessels violating the rolling hotspot closures for salmon bycatch, we are not aware of any WFC member violations, but we have been advised that the required third party audit of vessel VMS data is not concluded. That report from the separate third party audit will be provided to the NPFMC when it is available.

#### SIDEBOARD LIMITATIONS, ALLOCATIONS AND CATCHES

The laws of the AFA place limits on AFA qualified catcher vessels whereby their harvest of groundfish other than Bering Sea pollock is limited to historic levels. Halibut bycatch (PSC) is also limited through the co-op sideboard allocations. By AFA definition, all catch of groundfish sideboard species made by non-exempt AFA catcher vessels, whether as targeted catch or incidental catch, are to be deducted from the sideboard limits. These are reported in the final harvest specifications (Table 13, 75 FR 11778) and are intended to be a cap on all catches of these species.

Initial BSAI sideboard limits for all AFA CV cooperatives totaled 44,889 mt for all sideboard species. Of this total, only BSAI Pacific cod was allocated further to AFA co-ops and the allocation to WFC vessels totaled 2,118 mt where 123 mt was transferred from WFC to other co-ops leaving 1,995 mt of Pacific cod sideboard for WFC vessels. A total of 1,893 mt of BSAI sideboard species were caught by WFC vessels and 659 mt of WFC allocated sideboards were left unharvested (Exhibit 7). Aggregate differences between catch and sideboard limits for all AFA CV cooperatives will be reported in the interco-op report.

Initial GOA sideboard limits for all AFA CV cooperatives totaled 32,352 mt for all sideboard species. Primarily pollock and Pacific cod were allocated further to AFA co-ops and this allocation to WFC vessels totaled 4,261 mt where 1,471 mt was transferred from WFC to other co-ops leaving 2,719 mt of sideboard for WFC vessels (Exhibit 8). WFC member vessels did not conduct fisheries for

pollock or for other species of groundfish in the GOA management region and all GOA sideboard limits were left unharvested.

#### DIRECTED BERING SEA COD AND GULF POLLOCK FISHERY

WFC's directed Bering Sea Pacific cod allocations, transfers and catches for 2010 are presented in Exhibit 9 by member vessel. Member vessel directed Bering Sea Pacific cod allocations totaled 1,606.02 mt of which 1,153.96 mt were harvested by WFC co-op vessels. Only two member vessels participated in the WFC directed Bering Sea Pacific cod harvest. A total of 452.06 mt of the final WFC cod allocation remained unharvested.

Bycatch of other groundfish, halibut, herring, crab and salmon in the WFC directed Bering Sea cod fishery is detailed in Exhibit 10. Cod comprised 91.0% of the cod plus other groundfish catch in WFC's directed Bering Sea cod fishery.

As earlier noted in Exhibit 8, WFC's sideboard Gulf of Alaska allocations totaled 3,198 mt of Area 610 pollock, 278 mt of Area 620 pollock, 133 mt of Area 630 pollock and 183 mt of Area 640 pollock. All areas Gulf of Alaska pollock allocation for WFC vessels totaled 3,792 mt. Of this total, there were 1,348 mt transferred to other co-ops as reported in Exhibit 11. WFC member vessels did not fish Gulf of Alaska pollock in 2010 leaving 2,444 mt of Gulf of Alaska pollock un-harvested and un-transferred to other co-ops.

#### CATCHES BY GULF SIDEBOARD EXEMPT MEMBER VESSELS

One WFC member vessel (*Hickory Wind*) is Gulf of Alaska sideboard exempt. WFC operated within co-op guidelines and did not lease any of their Bering Sea pollock or cod.

## WFC PROHIBITED SPECIES AND ALL GROUND FISH CATCH TOTALS

WFC member vessel prohibited species catch totals for halibut, herring, Bristol Bay red king crab, *bairdi* Tanner crab, other Tanner crab, Chinook salmon and other salmon are provided in Exhibit 12. WFC member vessels total catch (landings and discards) by groundfish species, area and vessel is shown in Exhibit 13.

## WFC MONITORING AND ENFORCEMENT

All WFC directed Bering Sea pollock and cod catches, as well as sideboard catches and the halibut PSC were successfully managed and did not exceed allocations. The co-op was accordingly not required to take any enforcement actions.

Exhibit 1. Schematic of Westward Fleet Cooperative operations, 2010.

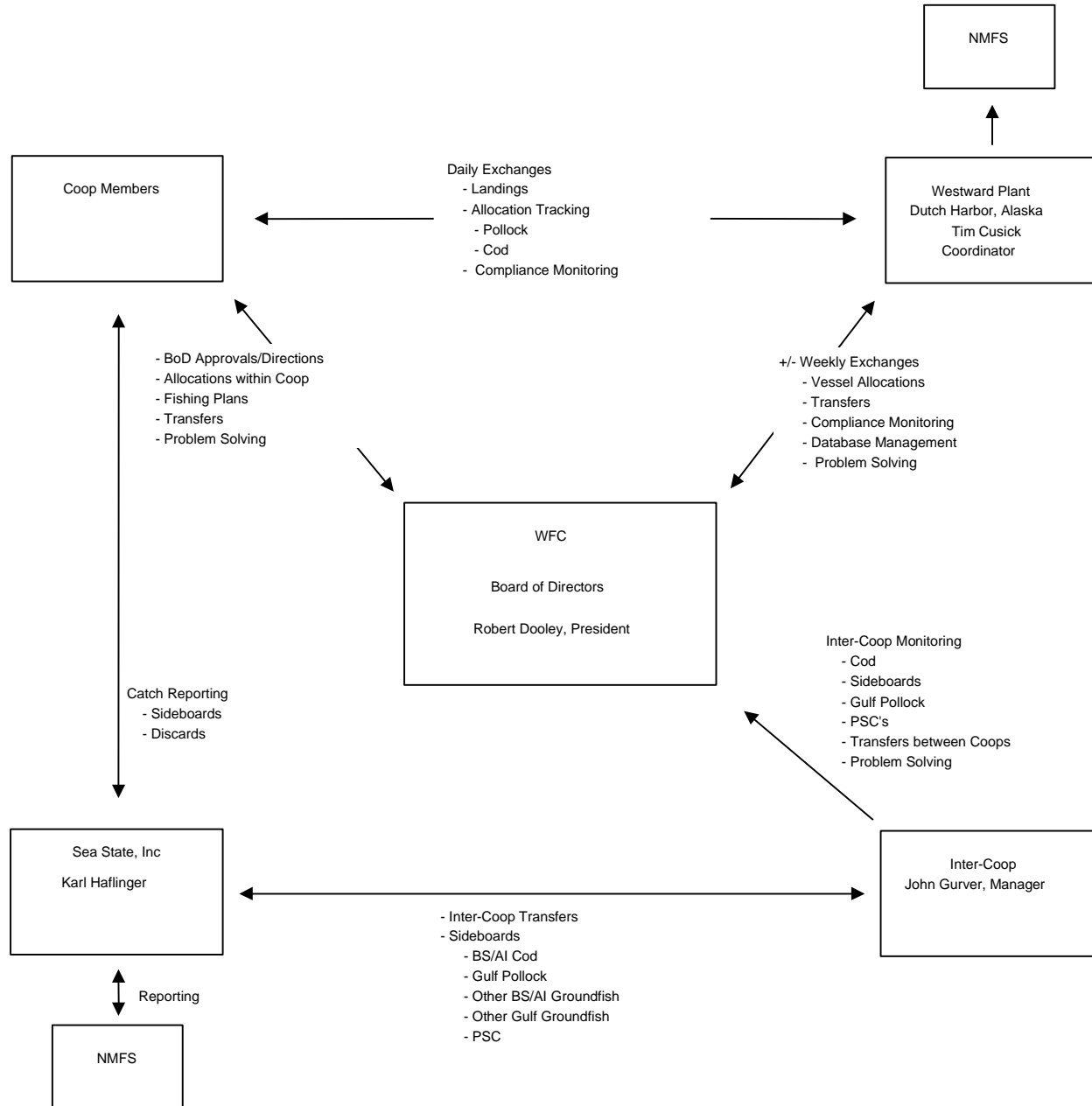


Exhibit 2. Percent distribution of 2010 Bering Sea "inshore pollock allocation" between the seven inshore AFA pollock cooperatives.

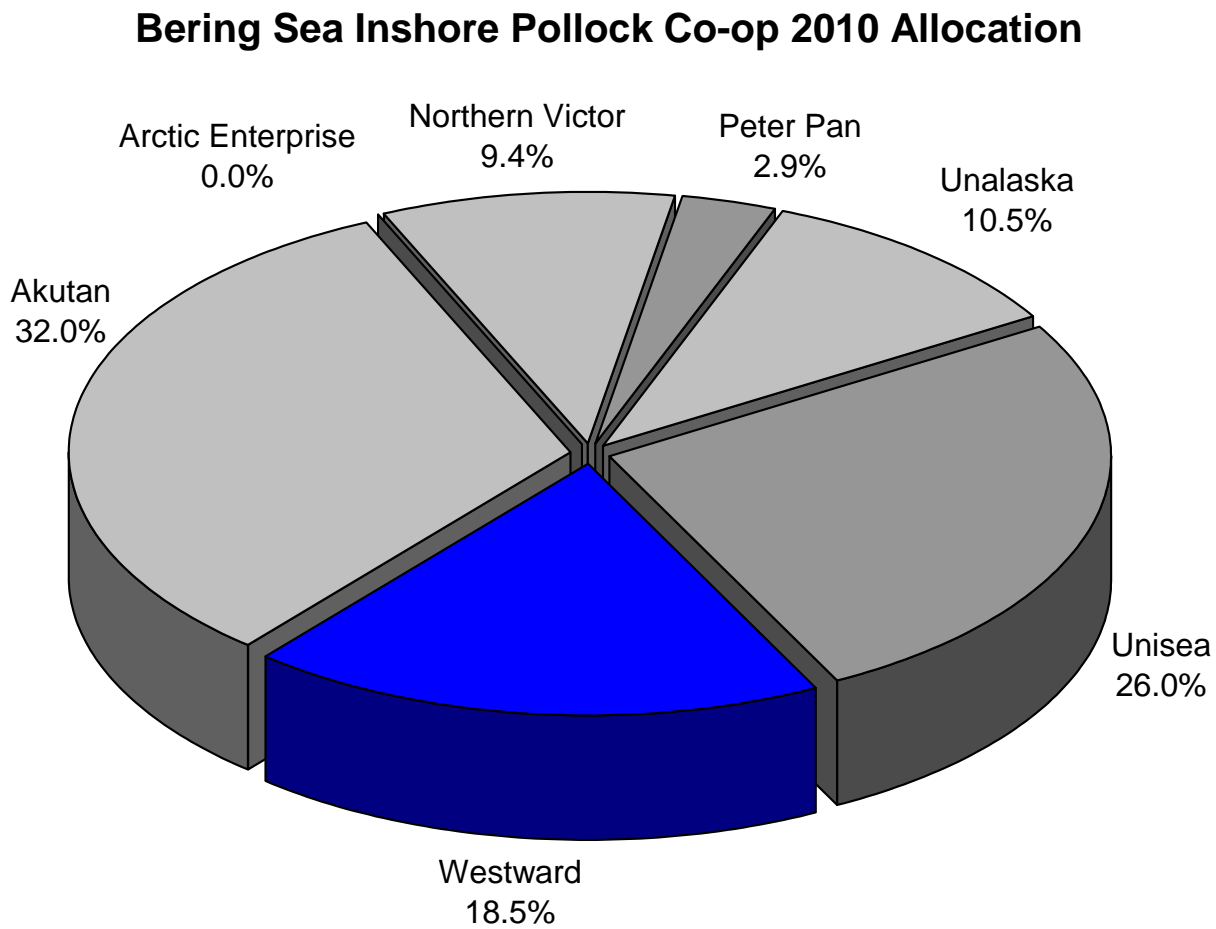


Exhibit 3. Westward Fleet Cooperative member vessel initial pollock allocations expressed as a percentage of the co-op total, as a percentage of the Bering Sea inshore directed pollock fishery, and in metric tons for 2010.

Company Name	Member Vessels	% of Co-op Allocation	% of AFA Inshore Directed Pollock Fishery	Annual Allocation (MT)
Alaskan Command LLC	Alaskan Command	2.012%	0.372%	1,314.842
Wa'atch, Inc.	Alyeska	6.547%	1.210%	4,278.465
Dona Martita LLC	Arctic Wind	5.983%	1.106%	3,909.891
Caitlin Ann LLC	Caitlin Ann	5.183%	0.958%	3,387.091
Ocean Dynasty Limited Partnership	Chelsea K	25.194%	4.658%	16,464.279
Dona Martita LLC	Dona Martita	11.398%	2.107%	7,448.593
Hickory Wind LLC	Hickory Wind	1.557%	0.288%	1,017.500
Pacific Knight LLC	Pacific Knight	11.824%	2.186%	7,726.984
Pacific Prince LLC	Pacific Prince	12.888%	2.383%	8,422.308
Viking Limited Partnership	Viking	8.984%	1.661%	5,871.044
Westward Limited Partnership	Westward 1	8.429%	1.558%	5,508.352
Cooperative Total		1.000%	18.488%	65,350.000 *

\* Some totals are rounded. Vessel percentages are as published in cooperative harvest schedule and final allocations are derived using harvest schedule percentages and the final cooperative pollock allocation posted in 75 FR 54792, September 9, 2010.

Exhibit 4. Westward Fleet Cooperative member vessel final Bering Sea directed pollock allocations for 2010 after within co-op transfers and trades.

Company Name	Member Vessels	Annual Allocation (MT)	Within Co-op Net Transfer In (+) MT & Out (-) MT	Within Co-op Trades In (+) MT & Out (-) MT	Final Pollock Allocation (MT)
Alaskan Command LLC	Alaskan Command	1,314.842	+9,794.851	0.000	11,109.693
Wa'atch, Inc.	Alyeska	4,278.465	-4,278.355	0.000	0.109
Dona Martita LLC	Arctic Wind	3,909.891	+1,806.654	0.000	5,716.545
Caitlin Ann LLC	Caitlin Ann	3,387.091	-455.389	0.000	2,931.702
Ocean Dynasty Limited Partnership	Chelsea K	16,464.279	-93.981	0.000	16,370.298
Dona Martita LLC	Dona Martita	7,448.593	-1,727.740	0.000	5,720.853
Hickory Wind LLC	Hickory Wind	1,017.500	0.000	0.000	1,017.500
Pacific Knight LLC	Pacific Knight	7,726.984	-7,726.526	0.000	0.458
Pacific Prince LLC	Pacific Prince	8,422.308	+325.122	0.000	8,747.430
Viking Limited Partnership	Viking	5,871.044	+1,463.715	0.000	7,334.759
Westward Limited Partnership	Westward 1	5,508.352	+891.649	0.000	6,400.000
Cooperative Total		65,350.000	0.000	0.000	65,350.000 *

\* Some totals are rounded.

Exhibit 5. Comparison of Westward Fleet Cooperative member vessels directed Bering Sea pollock catches with final allocations, 2010.

Company Name	Member Vessels	Final Pollock Allocation (MT)	Directed Bering Sea Pollock Catch by Vessel (MT)	Difference Over (+) Under (-)
Alaskan Command LLC	Alaskan Command	11,109.693	11,109.775	0.082
Wa'atch, Inc.	Alyeska	0.109	0.000	-0.109
Dona Martita LLC	Arctic Wind	5,716.545	5,715.982	-0.562
Caitlin Ann LLC	Caitlin Ann	2,931.702	2,931.644	-0.057
Ocean Dynasty Limited Partnership	Chelsea K	16,370.298	16,369.005	-1.293
Dona Martita LLC	Dona Martita	5,720.853	5,720.792 *	-0.061
Hickory Wind LLC	Hickory Wind	1,017.500	1,008.886	-8.614
Pacific Knight LLC	Pacific Knight	0.458	0.000	-0.458
Pacific Prince LLC	Pacific Prince	8,747.430	8,747.044	-0.386
Viking Limited Partnership	Viking	7,334.759	7,334.424	-0.335
Westward Limited Partnership	Westward 1	6,400.000	6,399.664	-0.336
Cooperative Total		65,350.000	65,337.216	-12.131

\* Directed catch includes Amendment 69 contractual fishing amounts as reported by the Co-op where 5,720.792 mt of F/V Dona Martita allocation was delivered by two non-WFC vessels. Some totals are rounded



Exhibit 6. Directed pollock fishing catch and bycatch and PSC's for the Westward Fleet Cooperative member vessels, 2010.

Company Name	Member Vessels	Directed Bering Sea Pollock Catch by Vessel (MT)	Other Groundfish (MT)	Herring (MT)	Halibut Mortality (MT)	Red King Crab (#)	<i>Bairdi</i> Tanner Crab (#)	<i>Other</i> Tanner Crab (#)	A Season*		B Season*	
									Chinook Salmon # (D2)	Other Salmon # (D2)	Chinook Salmon # (D2)	Other Salmon # (D2)
Alaskan Command LLC	Alaskan Command	11,109.775	70.806	0	1	0	8	16	90 (3)	0 (0)	3 (0)	21 (0)
Wa'atch, Inc.	Alyeska	0.000	0.000	0	0	0	0	0	0 (0)	0 (0)	0 (0)	0 (0)
Dona Martita LLC	Arctic Wind	5,715.982	70.976	5	0	0	6	11	41 (0)	1 (0)	1 (0)	12 (1)
Caitlin Ann LLC	Caitlin Ann	2,931.644	42.226	0	0	0	3	5	7 (1)	0 (0)	4 (0)	17 (3)
Ocean Dynasty Limited Partnership	Chelsea K	16,369.005	117.974	46	1	0	14	40	61 (0)	1 (0)	2 (0)	126 (2)
Dona Martita LLC	Dona Martita*	5,720.792	54.553	10	0	0	4	19	2 (0)	0 (0)	6 (0)	298 (0)
Hickory Wind LLC	Hickory Wind	1,008.886	26.105	0	0	0	3	2	0 (0)	0 (0)	5 (0)	35 (2)
Pacific Knight LLC	Pacific Knight	0.000	0.000	0	0	0	0	0	0 (0)	0 (0)	0 (0)	0 (0)
Pacific Prince LLC	Pacific Prince	8,747.044	131.181	0	1	1	10	16	228 (0)	0 (0)	3 (0)	8 (0)
Viking Limited Partnership	Viking	7,334.424	55.487	0	0	0	9	13	19 (1)	0 (0)	0 (0)	23 (0)
Westward Limited Partnership	Westward 1	6,399.664	55.356	1	0	0	5	16	30 (2)	1 (0)	4 (0)	28 (0)
Cooperative Total		65,337.216	624.665	63	4	1	62	137	478	3	28	568

Directed pollock catch totals are from Westward. All other PSCs and Other Groundfish are from Seastate.

\* All F/V Dona Martita catches are from Amendment 69 contractual fishing by two other vessels.

Exhibit 7. BSAI sideboard limits and aggregate catch by the Westward Fleet Cooperative member vessels, 2010.

BSAI Sideboard Species Limits from 2010 Final Specs Table 13 Area/ Species/ Season	Total AFA CV Sideboard Limit (mt)	Initial WFC** Sideboard Limit (mt)	Inter-Co-op Sideboard Transfer (mt)	Final Sideboard Limit (mt)***	WFC Co-op Catch (mt)	Difference Over "+" (mt) Under "-" (mt)
BSAI Pacific cod	28,675	2,118	-123	1,995	1,336	-659
BS Sablefish	107	NA	NA	NA	0	NA
AI Sablefish	28	NA	NA	NA	0	NA
Eastern BSAI Atka mackerel	68	NA	NA	NA	0	NA
Central AI Atka mackerel	4	NA	NA	NA	0	NA
Western AI Atka mackerel	0	NA	NA	NA	0	NA
BSAI yellowfin sole	NA *	NA	NA	NA	13	NA
BSAI rock sole	2,741	NA	NA	NA	96	NA
BS Greenland turbot	231	NA	NA	NA	0	NA
AI Greenland turbot	33	NA	NA	NA	0	NA
BSAI arrowtooth flounder	4,399	NA	NA	NA	51	NA
BSAI Alaska plaice	1,874	NA	NA	NA	2	NA
BSAI other flatfish	648	NA	NA	NA	45	NA
BS Pacific ocean perch	326	NA	NA	NA	1	NA
Eastern AI Pacific ocean perch	29	NA	NA	NA	0	NA
Central AI Pacific ocean perch	10	NA	NA	NA	0	NA
Western AI Pacific ocean perch	0	NA	NA	NA	0	NA
BSAI northern rockfish	61	NA	NA	NA	0	NA
BSAI shortraker rockfish	1	NA	NA	NA	0	NA
BSAI roughey rockfish	2	NA	NA	NA	0	NA
BS other rockfish	2	NA	NA	NA	0	NA
AI other rockfish	4	NA	NA	NA	0	NA
BSAI squid	641	NA	NA	NA	0	NA
BSAI other species	2,299	NA	NA	NA	119	NA
BSAI flathead sole	2,706	NA	NA	NA	230	NA
Co-op All Species Sideboard Total	44,889	NA	-123	NA	1,893	-659

PSC limited halibut for Bering Sea  
Directed cod fishery

33

Note: Some totals are rounded. Catch totals are from Seastate data

\* Exempted by 679.64(b)(6) as posted in 75 FR 11778 Table 13.

\*\* WFC sideboard allocations are made from total AFA CV sideboard limit when a directed fishery may occur - for 2010 this was for Pacific cod only as directed fishing is prohibited (see Table 16, 75 FR 11778) for all BSAI sideboard species except Pacific cod and yellowfin sole (see note\* above).

\*\*\* Final sideboard limit totals may also include amounts withheld for bycatch requirements.

## Exhibit 8. GOA sideboard limits and aggregate catch by the Westward Fleet Cooperative member vessels, 2010.

GOA Sideboard Species Limits from 2010 Final Specs Table 16 Area/Species/Season	Total AFA CV Sideboard Limit (mt)	Initial WFC* Sideboard Limit (mt)	Inter-Co-op Sideboard Transfer (mt)	Final Sideboard Limit (mt)**	WFC Co-op Catch (mt)	Difference Over "+" (mt) Under "-" (mt)
Area 610 "A" season pollock	3,357	676	-562	114	0	-114
Area 620 "A" season pollock	982	83	-83	0	0	0
Area 630 "A" season pollock	893	31	-31	0	0	0
Area 610 "B" season pollock	3,357	676	-471	205	0	-205
Area 620 "B" season pollock	1,158	98	-98	0	0	0
Area 630 "B" season pollock	586	20	-20	0	0	0
Area 640 "B" season pollock	710	183	0	183	0	-183
Area 610 "C" season pollock	4,582	923	0	923	0	-923
Area 620 "C" season pollock	569	48	0	48	0	-48
Area 630 "C" season pollock	1,199	41	-41	0	0	0
Area 610 "D" season pollock	4,582	923	0	923	0	-923
Area 620 "D" season pollock	569	48	0	48	0	-48
Area 630 "D" season pollock	1,199	41	-41	0	0	0
Western GOA Pacific cod	2,550	202	0	202	0	-202
Central GOA Pacific cod	2,280	196	-123	73	0	-73
Eastern GOA Pacific cod	14	NA	NA	NA	0	NA
Western GOA deep-water flatfish	0	NA	NA	NA	0	NA
Central GOA deep-water flatfish	185	10	NA	NA	0	NA
Eastern GOA deep-water flatfish	36	NA	NA	NA	0	NA
Western GOA rex sole	1	NA	NA	NA	0	NA
Central GOA rex sole	246	13	NA	NA	0	NA
Eastern GOA rex sole	5	NA	NA	NA	0	NA
Western GOA flathead sole	7	NA	NA	NA	0	NA
Central GOA flathead sole	107	0	NA	NA	0	NA
Eastern GOA flathead sole	3	NA	NA	NA	0	NA
Western GOA shallow-water flatfish	70	NA	NA	NA	0	NA
Central GOA shallow-water flatfish	763	2	NA	NA	0	NA
Eastern GOA shallow-water flatfish	32	NA	NA	NA	0	NA
Western GOA arrowtooth flounder	17	NA	NA	NA	0	NA
Central GOA arrowtooth flounder	840	45	NA	NA	0	NA
Eastern GOA arrowtooth flounder	1	NA	NA	NA	0	NA
Western GOA sablefish	0	NA	NA	NA	0	NA
Central GOA sablefish	58	NA	NA	NA	0	NA
Eastern GOA sablefish	9	NA	NA	NA	0	NA
Western GOA Pacific ocean perch	7	NA	NA	NA	0	NA
Central GOA Pacific ocean perch	803	NA	NA	NA	0	NA
Eastern GOA Pacific ocean perch	184	NA	NA	NA	0	NA
Western GOA shortraker rockfish	0	NA	NA	NA	0	NA
Central GOA shortraker rockfish	7	NA	NA	NA	0	NA
Eastern GOA shortraker rockfish	5	NA	NA	NA	0	NA
Western GOA rougheye rockfish	0	NA	NA	NA	0	NA
Central GOA rougheye rockfish	20	NA	NA	NA	0	NA
Eastern GOA rougheye rockfish	4	NA	NA	NA	0	NA
Western GOA other rockfish	1	NA	NA	NA	0	NA
Central GOA other rockfish	86	NA	NA	NA	0	NA
Eastern GOA other rockfish	0	NA	NA	NA	0	NA
Western GOA northern rockfish	1	NA	NA	NA	0	NA
Central GOA northern rockfish	66	NA	NA	NA	0	NA
Western GOA pelagic shelf rockfish	0	NA	NA	NA	0	NA
Central GOA pelagic shelf rockfish	0	NA	NA	NA	0	NA
Eastern GOA pelagic shelf rockfish	8	NA	NA	NA	0	NA
Western GOA thornyhead rockfish	12	NA	NA	NA	0	NA
Central GOA thornyhead rockfish	18	NA	NA	NA	0	NA
Eastern GOA thornyhead rockfish	20	NA	NA	NA	0	NA
Western GOA big skates	4	NA	NA	NA	0	NA
Central GOA big skates	13	NA	NA	NA	0	NA
Eastern GOA big skates	4	NA	NA	NA	0	NA
Western GOA longnose skates	0	NA	NA	NA	0	NA
Central GOA longnose skates	13	NA	NA	NA	0	NA
Eastern GOA longnose skates	5	NA	NA	NA	0	NA
GOA other skates	13	NA	NA	NA	0	NA
SEO GOA demersal shelf rockfish	1	NA	NA	NA	0	NA
GOA Atka mackerel	62	NA	NA	NA	0	NA
GOA other	28	NA	NA	NA	0	NA
<b>Co-op All Species Sideboard Total</b>	<b>32,352</b>	<b>4,261</b>	<b>-1,471</b>	<b>2,719</b>	<b>0</b>	<b>-2,719</b>

Note: Some totals are rounded. Catch totals are from Westward & Seastate data.

\* WFC sideboard allocations are made from total AFA CV sideboard limit when a directed fishery may occur.

\*\* Final sideboard limit totals may also include amounts withheld for bycatch requirements.

Exhibit 9. Comparison of Westward Fleet Cooperative member vessels directed Bering Sea Pacific cod catches with final allocations, 2010.

Company Name	Member Vessels	Initial Coop Cod Allocation (MT)	Within Coop Net Transfer In (+) & Out (-)	InterCoop Transfers (MT) In (+), Out (-)	Westward Coop Final Adjusted Cod Allocation (MT)	Directed Bering Sea Cod Catch by Vessel (MT)	Difference Over (+) Under (-)
Alaskan Command LLC	Alaskan Command	0.00	0.00	0.00	0.00	0.00	0.00
Wa'atch, Inc.	Alyeska	0.00	0.00	0.00	0.00	0.00	0.00
Dona Martita LLC	Arctic Wind	250.88	+367.89	0.00	618.77	438.88	-179.89
Caitlin Ann LLC	Caitlin Ann	256.35	+658.03	0.00	914.38	715.08	-199.30
Ocean Dynasty Limited Partnership	Chelsea K	45.93	-45.93	0.00	0.00	0.00	0.00
Dona Martita LLC	Dona Martita	223.18	-223.18	0.00	0.00	0.00	0.00
Hickory Wind LLC	Hickory Wind	72.87	0.00	0.00	72.87	0.00	-72.87
Pacific Knight LLC	Pacific Knight	98.78	-98.78	0.00	0.00	0.00	0.00
Pacific Prince LLC	Pacific Prince	238.00	-238.00	0.00	0.00	0.00	0.00
Viking Limited Partnership	Viking	217.01	-217.01	0.00	0.00	0.00	0.00
Westward Limited Partnership	Westward 1	203.02	-203.02	0.00	0.00	0.00	0.00
Coop Total		1,606.02	0.00	0.00	1,606.02	1,153.96	-452.06

Exhibit 10. Directed Pacific cod fishing catch and bycatch for the Westward Fleet Cooperative member vessels, 2010.

Company Name	Member Vessels	Directed Bering Sea Cod Catch by Vessel (MT)	Other Groundfish Catch (MT)	Halibut Mortality (MT)	Herring Catch (MT)	Red King Catch (#)	<i>Bairdi</i> Tanner Catch (#)	Other Tanner Catch (#)	Chinook Salmon (#)	Other Salmon (#)
Alaskan Command LLC	Alaskan Command	0.000	0.000	0	0	0	0	0	0	0
Wa'atch, Inc.	Alyeska	0.000	0.000	0	0	0	0	0	0	0
Dona Martita LLC	Arctic Wind	438.880	61.881	9	0	0	601	153	3	0
Caitlin Ann LLC	Caitlin Ann	715.080	51.764	11	0	0	1,511	335	0	9
Ocean Dynasty Limited Partnership	Chelsea K	0.000	0.000	0	0	0	0	0	0	0
Dona Martita LLC	Dona Martita	0.000	0.000	0	0	0	0	0	0	0
Hickory Wind LLC	Hickory Wind	0.000	0.000	0	0	0	0	0	0	0
Pacific Knight LLC	Pacific Knight	0.000	0.000	0	0	0	0	0	0	0
Pacific Prince LLC	Pacific Prince	0.000	0.000	0	0	0	0	0	0	0
Viking Limited Partnership	Viking	0.000	0.000	0	0	0	0	0	0	0
Westward Limited Partnership	Westward 1	0.000	0.000	0	0	0	0	0	0	0
Coop Total		1,153.960	113.645	20	0	0	2,112	488	3	9

Pacific cod catch totals are from Westward. All other PSCs and Other Groundfish are from Seastate.

Exhibit 11. Transfers of Westward Fleet Cooperative Gulf of Alaska pollock sideboard limits to other catcher vessel co-ops, 2010.

Gulf Area/Season	Transfers To	Transfer Amount (MT)
610 A Season	Unalaska Co-op	598.530
610 B Season	Unalaska Co-op	501.615
620 A Season	Unalaska Co-op	88.791
620 B Season	Unalaska Co-op	104.705
630 A Season	Unalaska Co-op	32.621
630 B Season	Unalaska Co-op	21.406
CGOA Cod A Season	Unalaska Co-op	122.999
Total GOA Transfers		1,470.666

Exhibit 12. Westward Fleet Cooperative vessel-by-vessel prohibited species catch, 2010.

Company Name	Member Vessels	Total Halibut Mortality (MT)	Total Herring Catch (MT)	Total Red King Crab (#)	Total Bairdi Tanner Crab (#)	Total Other Tanner Crab (#)	Total Chinook Salmon (#)	Total Other Salmon (#)
Alaskan Command LLC	Alaskan Command	1	0	0	8	16	90	21
Wa'atch, Inc.	Alyeska	0	0	0	0	0	0	0
Dona Martita LLC	Arctic Wind	9	5	0	607	164	44	12
Caitlin Ann LLC	Caitlin Ann	12	0	0	1,514	340	7	26
Ocean Dynasty Limited Partnership	Chelsea K	1	46	0	14	40	61	126
Dona Martita LLC	Dona Martita	0	10	0	4	19	2	298
Hickory Wind LLC	Hickory Wind	0	0	0	3	2	0	35
Pacific Knight LLC	Pacific Knight	0	0	0	0	0	0	0
Pacific Prince LLC	Pacific Prince	1	0	1	10	16	228	8
Viking Limited Partnership	Viking	0	0	0	9	13	19	23
Westward Limited Partnership	Westward 1	0	1	0	5	16	30	28
<b>Coop Total</b>		<b>24</b>	<b>63</b>	<b>1</b>	<b>2,174</b>	<b>625</b>	<b>481</b>	<b>577</b>

Exhibit 13. Westward Fleet Cooperative vessel-by-vessel total groundfish catch (landed and discarded mt), 2010.

	GF Sp/Area	AK Command	Alyeska	Arctic Wind	Caitlin Ann	Chelsea K	Dona Martita*	Hickory Wind	Pacific Knight	Pacific Prince	Viking	Westward I	WFC Total
Landed Catch (mt)	Pollock BS	11,110	0	5,728	2,972	16,369	5,712	1,009	0	8,747	7,334	6,391	65,371
	Pcod BSAI	26	0	464	691	34	21	11	0	40	17	22	1,327
	Flathead BSAI	23	0	26	19	48	25	2	0	40	18	21	221
	Otherspec BSAI	8	0	16	8	14	3	6	0	13	6	5	78
	Rocksole BSAI	7	0	17	3	16	3	5	0	11	2	1	66
	Oflats BSAI	1	0	2	9	3	0	0	0	15	9	3	42
	Arrowtooth BSAI	5	0	3	1	3	2	1	0	3	3	3	23
	Yellowfin BSAI	0	0	3	0	1	0	0	0	9	0	0	13
	POP BS	0	0	0	0	0	0	1	0	0	0	0	1
	Turbot BS	0	0	0	0	0	0	0	0	0	0	0	0
	AKPlaice BSAI	0	0	0	0	0	0	0	0	0	0	0	0
	Squid BSAI	0	0	0	0	0	0	0	0	0	0	0	0
	Mackerel BS/541	0	0	0	0	0	0	0	0	0	0	0	0
	Northern BSAI	0	0	0	0	0	0	0	0	0	0	0	0
	ORockfish BS	0	0	0	0	0	0	0	0	0	0	0	0
Discarded Catch (mt)	Pollock BS	14	0	72	54	23	10	0	0	10	12	9	204
	Pcod BSAI	0	0	3	5	0	0	0	0	0	0	0	9
	Flathead BSAI	0	0	3	6	0	0	0	0	0	0	0	9
	Otherspec BSAI	0	0	15	25	0	0	0	0	0	0	0	41
	Rocksole BSAI	0	0	7	23	0	0	0	0	0	0	0	30
	Oflats BSAI	0	0	1	2	0	0	0	0	0	0	0	3
	Arrowtooth BSAI	0	0	12	17	0	0	0	0	0	0	0	29
	Yellowfin BSAI	0	0	0	0	0	0	0	0	0	0	0	1
	POP BS	0	0	0	0	0	0	0	0	0	0	0	0
	Turbot BS	0	0	0	0	0	0	0	0	0	0	0	0
	AKPlaice BSAI	0	0	0	0	0	0	0	0	0	0	0	0
	Squid BSAI	0	0	0	0	0	0	0	0	0	0	0	0
	Mackerel BS/541	0	0	0	0	0	0	0	0	0	0	0	0
	Northern BSAI	0	0	0	0	0	0	0	0	0	0	0	0
	ORockfish BS	0	0	0	0	0	0	0	0	0	0	0	0

\* fished by two other vessels under Amendment 69 contract.

Note:

Total landings and discards by vessel are provided by Seastate and may not include adjustments from final NMFS observer data and represent all directed or incidental catch of both landings and discards taken in all WFC fishing in 2010.



## ATTACHMENT 1

WFC MEMBERSHIP AGREEMENT 2010 ADDENDUM

WESTWARD FLEET COOPERATIVE

MEMBERSHIP AGREEMENT

2010 ADDENDUM

Each of the undersigned hereby acknowledges and agrees that the terms and conditions of the Westward Fleet Cooperative Membership Agreement dated as of December 23, 1999, as amended by that First Amendment to Membership Agreement dated as of January 15, 2004, and that Membership Agreement Addendum dated as of January 12, 2006 shall be in full force and effect among the undersigned for the year 2010, and that Exhibit A attached hereto supersedes Exhibit A to the Membership Agreement and to all prior amendments and addenda thereto.

In addition, each of the undersigned hereby certifies that the vessel on behalf of which it is executing this Addendum: (i) delivered more pollock to Westward Seafoods, Inc. than to any other AFA inshore processor in the last year in which the vessel engaged in directed fishing for pollock in the BSAI for delivery to the inshore sector; (ii) is a qualified catcher vessel; (iii) is otherwise eligible to fish for groundfish in the BSAI; (iv) has an AFA catcher vessel permit with an inshore endorsement; and (v) has no permit sanctions or other type of sanctions against it that would prevent it from fishing for groundfish in the BSAI.

Dated effective as of December 1, 2009.

F/V ALASKAN COMMAND  
Alaskan Command L.L.C.

By:   
Its: Erik Madsen

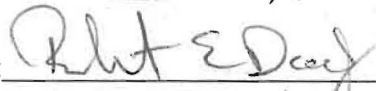
F/V ALYESKA  
Wa'atch, Inc.

By:   
Its: PofA

F/V ARCTIC WIND  
Dona Martita LLC

By:   
Its: Managing Member

F/V CAITLIN ANN  
Caitlin Ann, LLC

By:   
Its: managing partner

[SIGNATURES CONTINUE ON PAGE 2]

F/V CHELSEA K  
Ocean Dynasty Limited Partnership

By: [Signature]  
Its: ENG MANAGER

F/V DONA MARTITA  
Dona Martita LLC

By: [Signature]  
Its: Managing Member

F/V HICKORY WIND  
Hickory Wind, LLC

By: [Signature]  
Its: Managing Member

F/V PACIFIC KNIGHT  
Pacific Knight LLC

By: [Signature]  
Its: ENGINEERING MANAGER

F/V PACIFIC PRINCE  
Pacific Prince, LLC

By: [Signature]  
ITS: managing partner

F/V VIKING  
Viking Limited Partnership

By: [Signature]  
Its: ENG MANAGER

F/V WESTWARD 1  
Westward Limited Partnership

By: [Signature]  
Its: ENG MANAGER

WESTWARD FLEET COOPERATIVE

By: [Signature]  
Its: president

WESTWARD FLEET COOPERATIVE  
EXHIBIT A TO 2010 ADDENDUM

BERING SEA/ALEUTIAN ISLANDS POLLOCK FISHERY  
HARVEST SCHEDULE

<i>Member</i>	<i>Vessel</i>	<i>Percentage of Allocation</i>
Alaskan Command L.L.C.	ALASKAN COMMAND	2.012
Wa'atch, Inc.	ALYESKA	6.547
Dona Martita LLC	ARCTIC WIND	5.983
Caitlin Ann, LLC	CAITLIN ANN	5.183
Ocean Dynasty Limited Partnership	CHELSEA K	25.194
Dona Martita LLC	DONA MARTITA	11.398
Hickory Wind, LLC	HICKORY WIND	1.557
Pacific Knight LLC	PACIFIC KNIGHT	11.824
Pacific Prince, LLC	PACIFIC PRINCE	12.888
Viking Limited Partnership	VIKING	8.984
Westward Limited Partnership	WESTWARD 1	8.429
<b>TOTAL</b>		100.000%