

**FINAL REPORT OF THE
WESTWARD FLEET COOPERATIVE
YEAR 2009**

PREPARED FOR:

NORTH PACIFIC FISHERY MANAGEMENT COUNCIL

JANUARY 12, 2010

PREPARED BY:

**NATURAL RESOURCES CONSULTANTS, INC.
SEATTLE, WASHINGTON**

POINT OF CONTACT:

STEVE HUGHES (206) 285-3480

**FINAL REPORT OF THE
WESTWARD FLEET COOPERATIVE
YEAR 2009**

**Presented to the
North Pacific Fishery Management Council
JANUARY 12, 2010**

TABLE OF CONTENTS

	Page
INTRODUCTION	1
WESTWARD FLEET MEMBER VESSELS AND CO-OP MANAGEMENT	1
WFC BERING SEA POLLOCK ALLOCATION, TRANSFERS AND CATCH	3
OUTSIDE WESTWARD PROCESSOR DELIVERIES	4
BYCATCH IN THE BERING SEA POLLOCK FISHERY.....	4
SIDEBOARD LIMITATIONS, ALLOCATIONS AND CATCHES	5
DIRECTED BERING SEA COD AND GULF POLLOCK FISHERY	6
CATCHES BY GULF SIDEBOARD EXEMPT MEMBER VESSELS	6
WFC PROHIBITED SPECIES CATCH TOTALS	7
WFC MONITORING AND ENFORCEMENT	7
EXHIBITS.....	8-20
ATTACHMENT 1	
ATTACHMENT 2	

LIST OF EXHIBITS

	Page
Exhibit 1. Schematic of Westward Fleet Cooperative operations, 2009.....	8
Exhibit 2. Percent distribution of 2009 Bering Sea "inshore pollock allocation" between the seven inshore AFA pollock cooperatives.....	9
Exhibit 3. Westward Fleet Cooperative member vessel initial pollock allocations expressed as a percentage of the co-op total, as a percentage of the Bering Sea inshore directed pollock fishery, and in metric tons for 2009.	10
Exhibit 4. Westward Fleet Cooperative member vessel final Bering Sea directed pollock allocations for 2009 after within co-op transfers and trades.....	11
Exhibit 5. Comparison of Westward Fleet Cooperative member vessels directed Bering Sea pollock catches with final allocations, 2009.	12
Exhibit 6. Directed pollock fishing catch and bycatch and PSC's for the Westward Fleet Cooperative member vessels, 2009.	13
Exhibit 7. BSAI sideboard limits and aggregate catch by the Westward Fleet Cooperative member vessels, 2009.....	14
Exhibit 8. GOA sideboard limits and aggregate catch by the Westward Fleet Cooperative member vessels, 2009.....	15
Exhibit 9. Comparison of Westward Fleet Cooperative member vessels directed Bering Sea Pacific cod catches with final allocations, 2009.	16
Exhibit 10. Directed Pacific cod fishing catch and bycatch for the Westward Fleet Cooperative member vessels, 2009.	17
Exhibit 11. Transfers of Westward Fleet Cooperative Gulf of Alaska pollock sideboard limits to other catcher vessel co-ops, 2009.	18
Exhibit 12. Westward Fleet Cooperative vessel-by-vessel prohibited species catch, 2009.	19
Exhibit 13. Westward Fleet Cooperative vessel-by-vessel total groundfish catch (landed and discarded), 2009.	20

**FINAL REPORT OF THE
WESTWARD FLEET COOPERATIVE
YEAR 2009**

**Presented to the
North Pacific Fishery Management Council
January 12, 2010**

INTRODUCTION

Westward Fleet Cooperative (WFC) is pleased to submit this document and results of their 2009 Bering Sea fishery to the North Pacific Fishery Management Council (NPFMC) in compliance with annual reporting requirements of the 1998 American Fisheries Act (AFA).

Year 2009 was the tenth year of WFC operations under the AFA. The Westward fleet was managed and operated during 2009 following the successful model established during the previous nine years fisheries—basically without change. This document format and 13 exhibits herein reporting WFC co-op members, management, allocations, catches, sideboard limits, prohibited species catches and enforcement is also consistent with WFC's earlier years reporting to the NPFMC. We believe this reporting format and detail is both in keeping with AFA reporting requirements and provides easy comparison to the prior year results.

WESTWARD FLEET MEMBER VESSELS AND CO-OP MANAGEMENT

Managing members representing 12 catcher vessels signed their eighth year co-op membership agreement on December 1, 2008, which enabled them to operate under the laws of the AFA in a fishery cooperative delivering pollock to Westward Seafood Inc., through the 2009 fishing season (Attachment 1 and 2) under terms of these agreements. The 2009 managing member owners and their respective vessels are listed below:

F. Gregory Baker, Managing Member

- Viking Limited Partnership F/V *Viking* 130 ft LOA
- Alaskan Command LLC, F/V *Alaskan Command* 185 ft LOA
- Westward Limited Partnership, F/V *Westward I* 127 ft LOA
- Pacific Knight LLC, F/V *Pacific Knight* 165 ft LOA
- Ocean Dynasty Limited Partnership, F/V *Chelsea K* 149 ft LOA

John and Robert Dooley, Managing Member

- Pacific Prince LLC, F/V *Pacific Prince* 148 ft LOA
- Caitlin Ann LLC, F/V *Caitlin Ann* 104 ft LOA

Donald Johnson, Managing Member, Hickory Wind LLC

- F/V *Hickory Wind* 104 ft LOA

Michael Faris, Managing Member, Ocean Hope 3 LLC

- F/V *Ocean Hope 3* 112 ft LOA

Dan Green, Managing Member, Wa'atch, Inc.

- F/V *Alyeska* 125 ft LOA

Bob Desautel, Managing Member, Dona Martita LLC

- F/V *Arctic Wind* 123 ft LOA
- F/V *Dona Martita* 165 ft LOA

Co-op management and administration continued during 2009 basically unchanged from management and administration of the eight prior co-op years (Exhibit 1). Mr. Robert Dooley continued to serve as the president of WFC and Mr. Tim Cusick served as the co-op coordinator. Coordination of information on allocations, transfers, pollock catches, sideboard catches and prohibited species catches between the Westward plant in Dutch Harbor, the member vessels, Sea State, the Inter co-op Manager and the National Marine Fisheries Service all

continued during 2009 as established in year 2000 and as conducted in 2001 through 2008.

WFC BERING SEA POLLOCK ALLOCATION, TRANSFERS AND CATCH

In 2009, the initial pollock allocation to WFC represented 18.906% of the AFA inshore-directed pollock allocation. WFC was the third largest tonnage co-op of the seven AFA inshore co-ops (Exhibit 2). WFC's 12 member vessels received AFA Bering Sea pollock allocations that totaled 66,563 mt. This co-op allocation was distributed among the 12 member vessels. Exhibit 3 provides details of the 12 vessel's initial pollock allocations. Individual vessel Bering Sea pollock allocations are expressed in tonnage, expressed as a percentage of the WFC total allocation and expressed as a percentage of the 2009 inshore directed pollock fishery.

Within the WFC, 10 of the 12 member vessels transferred pollock allocations among themselves. Two member vessels, *F/V Pacific Knight*, and *F/V Alyeska* transferred essentially all of their allocation to other member vessels and remained inactive in the Bering pollock fishery during 2009. Exhibit 4 identifies the transfers of Bering Sea pollock within the co-op by member vessel and the resulting final allocations to member vessels after transfers were completed. The final allocations shown in Exhibit 4 represented tonnages of Bering Sea pollock available to member vessels for harvesting during the 2009 fishing seasons.

Individual WFC member vessels directed Bering Sea pollock catches by the nine vessels that operated are provided in Exhibit 5 and are compared to their respective final pollock allocations. The WFC total directed Bering Sea pollock catch of their co-op's allocation totaled 66,181.884 mt. Of this total catch, 61,519.888 mt was delivered by WFC vessels and 4,570.081 mt was delivered by two non-WFC vessels (Amendment 69 contract delivery). WFC total pollock deliveries were 99.3% of WFC pollock allocation.

OUTSIDE WESTWARD PROCESSOR DELIVERIES

Member vessels delivered 98.89% of the WFC pollock catch to the co-op's affiliated processor--Westward Seafoods, Inc. Only one vessel, the Ocean Hope 3, made deliveries to a non-affiliated processor which was arranged after a mid-season sale of the vessel. Accordingly, WFC member vessels were in compliance with AFA Section (210)(b)(6), which provides that up to 10% of the pollock harvested within a co-op, can be delivered to processors other than the co-op's affiliated processor.

BYCATCH IN THE BERING SEA POLLOCK FISHERY

Bycatch of other groundfish, herring, halibut, crab and salmon from the directed Bering Sea pollock fishery is detailed by member vessel in Exhibit 6. Pollock represented 97.4% of the catch of pollock plus all other groundfish.

Further detail of salmon bycatch in the directed Bering Sea pollock fishery is reported for WFC in 2009 to meet additional reporting requirements implemented in 2008 under Amendment 84 (salmon bycatch ICA). Specifically, Exhibit 6 summarizes the seasonal (A and B) catches of Chinook and chum salmon (other salmon), and the number of appearances of each vessel on the "dirty 20" lists for both salmon species. To appear on the "dirty 20" list, a vessel must have exceeded the salmon bycatch base rate for that weekly period and have been among the top 20 vessels with the highest salmon bycatch rate for that weekly period.

We have been advised of a new reporting requirement that continues into 2009 which deals with estimated numbers of salmon avoided by vessels as a result of vessels relocating fishing effort away from salmon savings areas. We understand that this salmon savings analysis will be calculated by industry

sector and presented in the Inter-coop Report rather than in each individual cooperative report.

Regarding the new compliance audit reporting requirement dealing with vessels violating the rolling hotspot closures for salmon bycatch, we are not aware of any WFC member violations, but we have been advised that the required third party audit of vessel VMS data is not concluded. That report from the separate third party audit will be provided to the NPFMC when it is available.

SIDEBOARD LIMITATIONS, ALLOCATIONS AND CATCHES

The laws of the AFA place limits on AFA qualified catcher vessels whereby their harvest of groundfish other than Bering Sea pollock is limited to historic levels. Halibut bycatch (PSC) is also limited through the co-op sideboard allocations. By AFA definition, all catch of groundfish sideboard species made by non-exempt AFA catcher vessels, whether as targeted catch or incidental catch, are to be deducted from the sideboard limits. These are reported in the final harvest specifications (Table 13, 74 FR 7359) and are intended to be a cap on all catches of these species.

Initial BSAI sideboard limits for all AFA CV cooperatives totaled 55,737 mt for all sideboard species. Of this total, only BSAI Pacific cod was allocated further to AFA co-ops and the allocation to WFC vessels totaled 2,214 mt where 495 mt was transferred from WFC to other co-ops leaving 1,719 mt of Pacific cod sideboard for WFC vessels. A total of 2,336 mt of BSAI sideboard species were caught by WFC vessels and 812 mt of WFC allocated sideboards were left unharvested (Exhibit 7). Aggregate differences between catch and sideboard limits for all AFA CV cooperatives will be reported in the interco-op report.

Initial GOA sideboard limits for all AFA CV cooperatives totaled 20,844 mt for all sideboard species. Only pollock and Pacific cod were allocated further to AFA co-ops and this allocation to WFC vessels totaled 2,492 mt where 74 mt was

transferred from WFC to other co-ops leaving 2,440 mt of sideboard for WFC vessels (Exhibit 8). WFC member vessels did not conduct fisheries for pollock or for other species of groundfish in the GOA management region and all GOA sideboard limits were left unharvested.

DIRECTED BERING SEA COD AND GULF POLLOCK FISHERY

WFC's directed Bering Sea Pacific cod allocations, transfers and catches for 2009 are presented in Exhibit 9 by member vessel. Member vessel directed Bering Sea Pacific cod allocations totaled 1,677.02 mt of which 495.01 mt were transferred by inter co-op agreements to other co-ops and 452.07 mt were harvested by WFC co-op vessels. Only one member vessel participated in the WFC directed Bering Sea Pacific cod harvest. A total of 729.94 mt of the final WFC cod allocation remained unharvested.

Bycatch of other groundfish, halibut, herring, crab and salmon in the WFC directed Bering Sea cod fishery is detailed in Exhibit 10. Cod comprised 71.1% of the cod plus other groundfish catch in WFC's directed Bering Sea cod fishery.

As earlier noted in Exhibit 8, WFC's sideboard Gulf of Alaska allocations totaled 1,857 mt of Area 610 pollock, 140 mt of Area 620 pollock, 77 mt of Area 630 pollock and 109 mt of Area 640 pollock. All areas Gulf of Alaska pollock allocation for WFC vessels totaled 2,183 mt. Of this total, there were 74 mt transferred to other co-ops as reported in Exhibit 11. WFC member vessels did not fish Gulf of Alaska pollock in 2009 leaving 2,109 mt of Gulf of Alaska pollock un-harvested and un-transferred to other co-ops.

CATCHES BY GULF SIDEBOARD EXEMPT MEMBER VESSELS

Two WFC member vessels (*Hickory Wind* and *Ocean Hope 3*) are Gulf of Alaska sideboard exempt. Both vessels operated within co-op guidelines and did not lease any of their Bering Sea pollock or cod.

WFC PROHIBITED SPECIES AND ALL GROUND FISH CATCH TOTALS

WFC member vessel prohibited species catch totals for halibut, herring, Bristol Bay red king crab, *bairdi* Tanner crab, other Tanner crab, Chinook salmon and other salmon are provided in Exhibit 12. WFC member vessels total catch (landings and discards) by groundfish species, area and vessel is shown in Exhibit 13.

WFC MONITORING AND ENFORCEMENT

All WFC directed Bering Sea pollock and cod catches, as well as sideboard catches and the halibut PSC were successfully managed and did not exceed allocations. The co-op was accordingly not required to take any enforcement actions.

Exhibit 1. Schematic of Westward Fleet Cooperative operations, 2009.

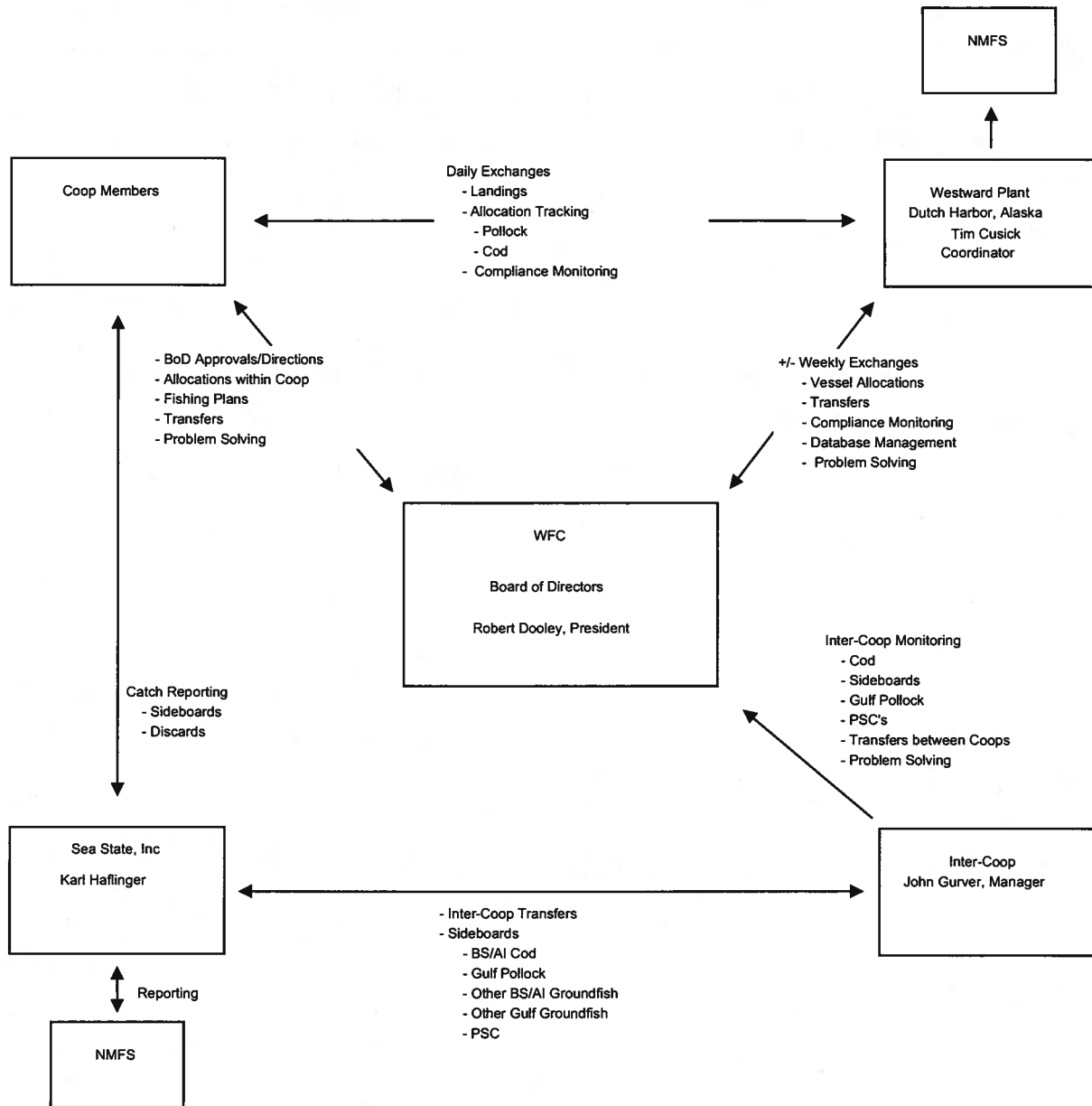


Exhibit 2. Percent distribution of 2009 Bering Sea "inshore pollock allocation" between the seven inshore AFA pollock cooperatives.

Bering Sea Inshore Pollock Co-op 2009 Allocation

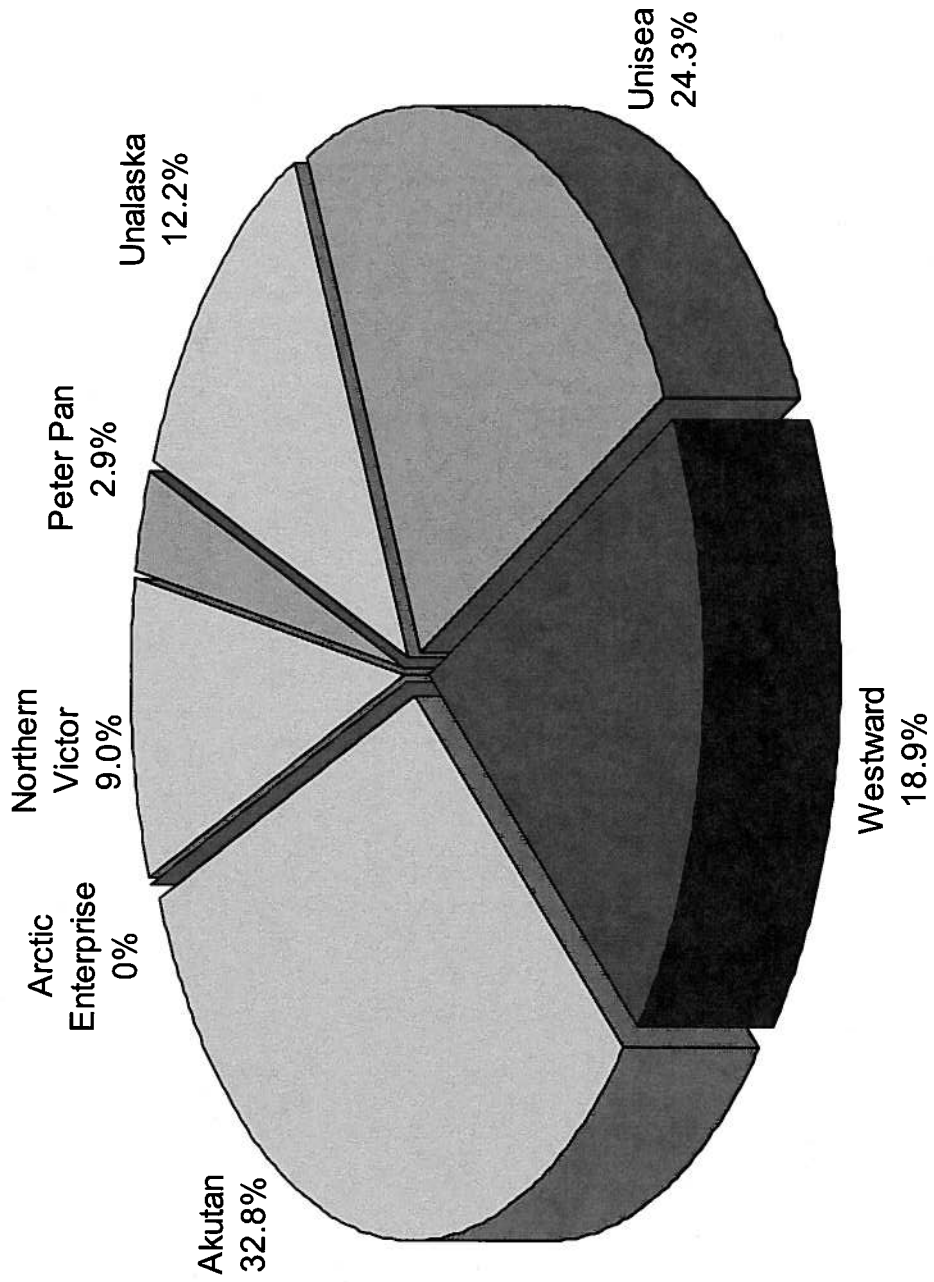


Exhibit 3. Westward Fleet Cooperative member vessel initial pollock allocations expressed as a percentage of the co-op total, as a percentage of the Bering Sea inshore directed pollock fishery, and in metric tons for 2009.

Company Name	Member Vessels	% of Co-op Allocation	% of AFA Inshore Directed Pollock Fishery	Year 2009 Allocation (MT)
Alaskan Command LLC	Alaskan Command	1.960%	0.371%	1,304.777
Wa'atch, Inc.	Alyeska	6.378%	1.206%	4,245.557
Dona Martita LLC	Arctic Wind	5.829%	1.102%	3,880.232
Caitlin Ann LLC	Caitlin Ann	5.050%	0.955%	3,361.368
Ocean Dynasty Limited Partnership	Chelsea K	24.546%	4.641%	16,338.732
Dona Martita LLC	Dona Martita	11.105%	2.100%	7,392.013
Hickory Wind LLC	Hickory Wind	1.517%	0.287%	1,009.872
Ocean Hope 3 LLC	Ocean Hope 3	2.571%	0.486%	1,711.479
Pacific Knight LLC	Pacific Knight	11.520%	2.178%	7,668.003
Pacific Prince LLC	Pacific Prince	12.557%	2.374%	8,358.296
Viking Limited Partnership	Viking	8.753%	1.655%	5,826.110
Westward Limited Partnership	Westward 1	8.213%	1.553%	5,466.562
Cooperative Total		100.000%	18.906%	66,563.000 *

* Some totals are rounded. Vessel percentages are as published in cooperative harvest schedule and final allocations are derived using harvest schedule percentages and the final cooperative pollock allocation posted in 74 FR 7359, February 18, 2009.

Exhibit 4. Westward Fleet Cooperative member vessel final Bering Sea directed pollock allocations for 2009 after within co-op transfers and trades.

Company Name	Member Vessels	Year 2009 Allocation (MT)	Within Co-op Net Transfer In (+) MT & Out (-) MT	Within Co-op Trades In (+) MT & Out (-) MT	Final Pollock Allocation (MT)
Alaskan Command LLC	Alaskan Command	1,304.777	+10,690.054	0.000	11,994.831
Wa'atch, Inc.	Alyeska	4,245.557	-4,245.557	0.000	0.000
Dona Martita LLC	Arctic Wind	3,880.232	+2,748.226	0.000	6,628.457
Caitlin Ann LLC	Caitlin Ann	3,361.368	-214.406	0.000	3,146.962
Ocean Dynasty Limited Partnership	Chelsea K	16,338.732	-1,281.025	0.000	15,057.707
Dona Martita LLC	Dona Martita	7,392.013	-2,821.932	0.000	4,570.081
Hickory Wind LLC	Hickory Wind	1,009.872	0.000	0.000	1,009.872
Ocean Hope 3 LLC	Ocean Hope 3	1,711.479	0.000	0.000	1,711.479
Pacific Knight LLC	Pacific Knight	7,668.003	-7,668.003	0.000	0.000
Pacific Prince LLC	Pacific Prince	8,358.296	+145.163	0.000	8,503.458
Viking Limited Partnership	Viking	5,826.110	+1,436.911	0.000	7,263.021
Westward Limited Partnership	Westward 1	5,466.562	+1,210.569	0.000	6,677.131
Cooperative Total		66,563.000	0.000	0.000	66,563.000 *

* Some totals are rounded.

Exhibit 5. Comparison of Westward Fleet Cooperative member vessels directed Bering Sea pollock catches with final allocations, 2009.

Company Name	Member Vessels	Final Pollock Allocation (MT)	Directed Bering Sea Pollock Catch by Vessel (MT)	Difference Over (+) Under (-)
Alaskan Command LLC	Alaskan Command	11,994.831	12,005.163	10.331
Wa'atch, Inc.	Alyeska	0.000	0.000	0.000
Dona Martita LLC	Arctic Wind	6,628.457	6,629.004	0.547
Caitlin Ann LLC	Caitlin Ann	3,146.962	3,151.974	+5.012
Ocean Dynasty Limited Partnership	Chelsea K	15,057.707	15,110.995	53.288
Dona Martita LLC	Dona Martita	4,570.081	4,571.814 *	1.733
Hickory Wind LLC	Hickory Wind	1,009.872	1,005.838	-4.034
Ocean Hope 3 LLC	Ocean Hope 3	1,711.479	1,243.042	-468.437
Pacific Knight LLC	Pacific Knight	0.000	0.000	0.000
Pacific Prince LLC	Pacific Prince	8,503.458	8,511.396	7.938
Viking Limited Partnership	Viking	7,263.021	7,269.160	6.139
Westward Limited Partnership	Westward 1	6,677.131	6,683.499	6.367
Cooperative Total		66,563.000	66,181.884	-381.116

* Directed catch includes Amendment 69 contractual fishing amounts as reported by the Co-op where F/V Dona Martita allocation of 4,571.814 mt was delivered by two non WFC vessels.

Exhibit 6. Directed pollock fishing catch and bycatch and PSC's for the Westward Fleet Cooperative member vessels, 2009.

Company Name	Member Vessels	Directed Bering Sea Pollock Catch by Vessel (MT)	Other Groundfish (MT)	Herring (MT)	Halibut Mortality (MT)	Red King Crab (#)	Bairdi		Other Tanner Crab (#)	A Season*			B Season*			
							Tanner Crab (#)	Crab (#)		Chinook #	Salmon (D2)	Other Salmon (D2)	Chinook #	Salmon (D2)	Other Salmon (D2)	
Alaskan Command LLC	Alaskan Command	12,005.163	372.054	0	2	0	7	45	82	(2)	1	(0)	8	(0)	84	(0)
Waatch, Inc.	Alyeska	0.000	0.000	0	0	0	0	0	0	(0)	0	(0)	0	(0)	0	(0)
Dona Martita LLC	Arctic Wind	6,629.004	226.215	0	1	0	6	28	45	(2)	0	(0)	4	(0)	47	(1)
Caitlin Ann LLC	Caitlin Ann	3,151.974	64.113	0	1	0	2	13	11	(1)	0	(0)	3	(0)	51	(0)
Ocean Dynasty Limited Partnership	Chelsea K	15,110.995	447.696	0	3	1	12	55	53	(0)	1	(0)	17	(0)	78	(0)
Dona Martita LLC	Dona Martita*	4,571.814	23.199	0	0	0	3	9	18	(0)	0	(0)	4	(0)	28	(0)
Hickory Wind LLC	Hickory Wind	1,005.838	4.445	0	0	0	2	0	13	(1)	0	(0)	1	(0)	16	(0)
Ocean Hope 3 LLC	Ocean Hope 3	1,243.042	72.323	7	1	0	2	0	9	(1)	0	(0)	1	(0)	85	(1)
Pacific Knight LLC	Pacific Knight	0.000	0.000	0	0	0	0	0	0	(0)	0	(0)	0	(0)	0	(0)
Pacific Prince LLC	Pacific Prince	8,511.396	106.908	0	2	1	11	29	86	(2)	1	(0)	4	(0)	77	(1)
Viking Limited Partnership	Viking	7,269.160	233.359	0	1	1	8	29	30	(0)	0	(0)	11	(0)	418	(0)
Westward Limited Partnership	Westward 1	6,683.499	230.773	0	2	1	7	29	67	(2)	0	(0)	3	(0)	171	(1)
Cooperative Total		66,181.884	1,781.085	7	13	5	60	238	414	3	3	56	1,055			

Directed pollock catch totals are from Westward. All other PSCs and Other Groundfish are from Seastate.
 * All FV Dona Martita catches are from Amendment 69 contractual fishing by two other vessels.

Exhibit 7. BSAI sideboard limits and aggregate catch by the Westward Fleet Cooperative member vessels, 2009.

BSAI Sideboard Species Limits from 2009 Final Specs Table 13 Area/ Species/ Season	Total AFA CV Sideboard Limit (mt)	Initial WFC** Sideboard Limit (mt)	Inter-Co-op Sideboard Transfer (mt)	Final Sideboard Limit (mt)***	WFC Co-op Catch (mt)	Difference Over "+" (mt) Under "-" (mt)
BSAI Pacific cod	38,094	2,214	-495	1,719	908	-812
BS Sablefish	1,071	NA	NA	NA	0	NA
AI Sablefish	429	NA	NA	NA	0	NA
Eastern BSAI Atka mackerel	78	NA	NA	NA	0	NA
Central AI Atka mackerel	1	NA	NA	NA	0	NA
Western AI Atka mackerel	0	NA	NA	NA	0	NA
BSAI yellowfin sole	NA *	NA	NA	NA	32	NA
BSAI rock sole	2,741	NA	NA	NA	710	NA
BS Greenland turbot	279	NA	NA	NA	0	NA
AI Greenland turbot	40	NA	NA	NA	0	NA
BSAI arrowtooth flounder	4,399	NA	NA	NA	75	NA
BSAI Alaska plaice	1,874	NA	NA	NA	2	NA
BSAI other flatfish	652	NA	NA	NA	11	NA
BS Pacific ocean perch	325	NA	NA	NA	2	NA
Eastern AI Pacific ocean perch	29	NA	NA	NA	0	NA
Central AI Pacific ocean perch	10	NA	NA	NA	0	NA
Western AI Pacific ocean perch	0	NA	NA	NA	0	NA
BSAI northern rockfish	60	NA	NA	NA	0	NA
BSAI shortraker rockfish	1	NA	NA	NA	0	NA
BSAI roughey rockfish	2	NA	NA	NA	0	NA
BS other rockfish	2	NA	NA	NA	1	NA
AI other rockfish	4	NA	NA	NA	0	NA
BSAI squid	641	NA	NA	NA	1	NA
BSAI other species	2,299	NA	NA	NA	283	NA
BSAI flathead sole	2,706	NA	NA	NA	313	NA
Co-op All Species Sideboard Total	55,737	NA	-495	NA	2,336	-812
PSC limited halibut for Bering Sea Directed cod fishery		26				

Note: Some totals are rounded. Catch totals are from Seastate data

* Exempted by 679.64(b)(6) as posted in 74 FR 7359 Table 13.

** WFC sideboard allocations are made from total AFA CV sideboard limit when a directed fishery may occur - for 2009 this was for Pacific cod only as directed fishing is prohibited (see Table 16, 74 FR 7359) for all BSAI sideboard species except Pacific cod and yellowfin sole (see note* above).

*** Final sideboard limit totals may also include amounts withheld for bycatch requirements.

Exhibit 8. GOA sideboard limits and aggregate catch by the Westward Fleet Cooperative member vessels, 2009.

GOA Sideboard Species Limits from 2009 Final Specs Table 15 Area/ Species/ Season	Total AFA CV Sideboard Limit (mt)	Initial WFC* Sideboard Limit (mt)	Inter-Co-op Sideboard Transfer (mt)	Final Sideboard Limit (mt)**	WFC Co-op Catch (mt)	Difference Over "+" (mt) Under "-" (mt)
Area 610 "A" season pollock	1,956	394	0	394	0	-394
Area 620 "A" season pollock	509	43	0	43	0	-43
Area 630 "A" season pollock	508	17	-15	3	0	-3
Area 610 "B" season pollock	1,955	394	0	394	0	-394
Area 620 "B" season pollock	632	54	0	54	0	-54
Area 630 "B" season pollock	295	10	-10	0	0	0
Area 640 "B" season pollock	425	109	0	109	0	-109
Area 610 "C" season pollock	2,655	535	0	535	0	-535
Area 620 "C" season pollock	252	21	0	21	0	-21
Area 630 "C" season pollock	720	25	-25	0	0	0
Area 610 "D" season pollock	2,655	535	0	535	0	-535
Area 620 "D" season pollock	252	21	0	21	0	-21
Area 630 "D" season pollock	720	25	-25	47	0	-47
Western GOA Pacific cod	1,987	158	0	158	0	-158
Central GOA Pacific cod	1,466	126	0	126	0	-126
Eastern GOA Pacific cod	14	NA	NA	NA	0	NA
Western GOA deep-water flatfish	0	NA	NA	NA	0	NA
Central GOA deep-water flatfish	448	24	NA	NA	0	NA
Eastern GOA deep-water flatfish	20	NA	NA	NA	0	NA
Western GOA rex sole	1	NA	NA	NA	0	NA
Central GOA rex sole	255	0	NA	NA	0	NA
Eastern GOA rex sole	4	NA	NA	NA	0	NA
Western GOA flathead sole	7	NA	NA	NA	0	NA
Central GOA flathead sole	107	0	NA	NA	0	NA
Eastern GOA flathead sole	4	NA	NA	NA	0	NA
Western GOA shallow-water flatfish	70	NA	NA	NA	0	NA
Central GOA shallow-water flatfish	763	0	NA	NA	0	NA
Eastern GOA shallow-water flatfish	60	NA	NA	NA	0	NA
Western GOA arrowtooth flounder	17	NA	NA	NA	0	NA
Central GOA arrowtooth flounder	840	0	NA	NA	0	NA
Eastern GOA arrowtooth flounder	1	NA	NA	NA	0	NA
Western GOA sablefish	0	NA	NA	NA	0	NA
Central GOA sablefish	64	NA	NA	NA	0	NA
Eastern GOA sablefish	10	NA	NA	NA	0	NA
Western GOA Pacific ocean perch	9	NA	NA	NA	0	NA
Central GOA Pacific ocean perch	617	NA	NA	NA	0	NA
Eastern GOA Pacific ocean perch	147	NA	NA	NA	0	NA
Western GOA shortraker rockfish	0	NA	NA	NA	0	NA
Central GOA shortraker rockfish	7	NA	NA	NA	0	NA
Eastern GOA shortraker rockfish	5	NA	NA	NA	0	NA
Western GOA rougheye rockfish	0	NA	NA	NA	0	NA
Central GOA rougheye rockfish	20	NA	NA	NA	0	NA
Eastern GOA rougheye rockfish	4	NA	NA	NA	0	NA
Western GOA other rockfish	1	NA	NA	NA	0	NA
Central GOA other rockfish	97	NA	NA	NA	0	NA
Eastern GOA other rockfish	0	NA	NA	NA	0	NA
Western GOA northern rockfish	1	NA	NA	NA	0	NA
Central GOA northern rockfish	64	NA	NA	NA	0	NA
Western GOA pelagic shelf rockfish	0	NA	NA	NA	0	NA
Central GOA pelagic shelf rockfish	0	NA	NA	NA	0	NA
Eastern GOA pelagic shelf rockfish	4	NA	NA	NA	0	NA
Western GOA thornyhead rockfish	7	NA	NA	NA	0	NA
Central GOA thornyhead rockfish	24	NA	NA	NA	0	NA
Eastern GOA thornyhead rockfish	22	NA	NA	NA	0	NA
Western GOA big skates	4	NA	NA	NA	0	NA
Central GOA big skates	13	NA	NA	NA	0	NA
Eastern GOA big skates	4	NA	NA	NA	0	NA
Western GOA longnose skates	0	NA	NA	NA	0	NA
Central GOA longnose skates	13	NA	NA	NA	0	NA
Eastern GOA longnose skates	5	NA	NA	NA	0	NA
GOA other skates	13	NA	NA	NA	0	NA
SEO GOA demersal shelf rockfish	1	NA	NA	NA	0	NA
GOA Atka mackerel	62	NA	NA	NA	0	NA
GOA other	28	NA	NA	NA	0	NA
Co-op All Species Sideboard Total	20,844	2,492	-74	2,440	0	-2,440

Note: Some totals are rounded. Catch totals are from Westward & Seastate data

* WFC sideboard allocations are made from total AFA CV sideboard limit when a directed fishery may occur.

** Final sideboard limit totals may also include amounts withheld for bycatch requirements.

Exhibit 9. Comparison of Westward Fleet Cooperative member vessels directed Bering Sea Pacific cod catches with final allocations, 2009.

Company Name	Member Vessels	Initial Coop Cod Allocation (MT) For Year 2008	Within Coop Net Transfer In (+) & Out (-)	InterCoop Transfers (MT) In (+), Out (-)	Westward Coop		Directed Bering Sea Cod Catch by Vessel (MT)	Difference Over (+) Under (-)
					Adjusted Cod Allocation (MT)	Final		
Alaskan Command LLC	Alaskan Command	0.00	0.00	0.00	0.00	0.00	0.00	0.00
Watch, Inc.	Alyeska	0.00	0.00	0.00	0.00	0.00	0.00	0.00
Dona Martita LLC	Arctic Wind	261.97	0.00	-261.97	0.00	0.00	0.00	0.00
Caitlin Ann LLC	Caitlin Ann	267.68	0.00	0.00	267.68	452.07	184.39	184.39
Ocean Dynasty Limited Partnership	Chelsea K	47.96	0.00	0.00	47.96	0.00	-47.96	-47.96
Dona Martita LLC	Dona Martita	233.05	0.00	-233.05	0.00	0.00	0.00	0.00
Hickory Wind LLC	Hickory Wind	76.09	0.00	0.00	76.09	0.00	-76.09	-76.09
Ocean Hope 3 LLC	Ocean Hope 3	0.00	0.00	0.00	0.00	0.00	0.00	0.00
Pacific Knight LLC	Pacific Knight	103.15	0.00	0.00	103.15	0.00	-103.15	-103.15
Pacific Prince LLC	Pacific Prince	248.52	0.00	0.00	248.52	0.00	-248.52	-248.52
Viking Limited Partnership	Viking	226.60	0.00	0.00	226.60	0.00	-226.60	-226.60
Westward Limited Partnership	Westward 1	211.99	0.00	0.00	211.99	0.00	-211.99	-211.99
Coop Total		1,677.02	0.00	-495.01	1,182.01	452.07	-729.94	-729.94

Exhibit 10. Directed Pacific cod fishing catch and bycatch for the Westward Fleet Cooperative member vessels, 2009.

Company Name	Member Vessels	Directed Bering Sea Cod Catch by Vessel (MT)	Other Groundfish Catch (MT)	Haiibut Mortality (MT)	Herring Catch (MT)	Red King Catch (#)	Bairdi Tanner Catch (#)	Other Tanner Catch (#)	Chinook Salmon (#)	Other Salmon (#)
Alaskan Command LLC	Alaskan Command	0.000	0.000	0	0	0	0	0	0	0
Waatch, Inc.	Alyeska	0.000	0.000	0	0	0	0	0	0	0
Dona Maritita LLC	Arctic Wind	0.000	0.000	0	0	0	0	0	0	0
Caitlin Ann LLC	Caitlin Ann	452.070	183.712	4	0	0	470	264	0	0
Ocean Dynasty Limited Partnership	Chelsea K	0.000	0.000	0	0	0	0	0	0	0
Dona Maritita LLC	Dona Maritita	0.000	0.000	0	0	0	0	0	0	0
Hickory Wind LLC	Hickory Wind	0.000	0.000	0	0	0	0	0	0	0
Ocean Hope 3 LLC	Ocean Hope 3	0.000	0.000	0	0	0	0	0	0	0
Pacific Knight LLC	Pacific Knight	0.000	0.000	0	0	0	0	0	0	0
Pacific Prince LLC	Pacific Prince	0.000	0.000	0	0	0	0	0	0	0
Viking Limited Partnership	Viking	0.000	0.000	0	0	0	0	0	0	0
Westward Limited Partnership	Westward 1	0.000	0.000	0	0	0	0	0	0	0
Coop Total		452.070	183.712	4	0	0	470	264	0	0

Pacific cod catch totals are from Westward. All other PSCs and Other Groundfish are from Seastate.

Exhibit 11. Transfers of Westward Fleet Cooperative Gulf of Alaska pollock sideboard limits to other catcher vessel co-ops, 2009.

Gulf Area/Season	Transfers To	Transfer Amount (MT)
630 D Season	Unalaska Co-op	74.253
Total GOA Transfers		74.253

Exhibit 12. Westward Fleet Cooperative vessel-by-vessel prohibited species catch, 2009.

Company Name	Member Vessels	Total Halibut Mortality (MT)	Total Herring Catch (MT)	Total Red King Crab (#)	Total Bairdi Tanner Crab (#)	Total Other Tanner Crab (#)	Total Chinook Salmon (#)	Total Other Salmon (#)
Alaskan Command LLC	Alaskan Command	2	0	0	7	45	82	84
Wa'tch, Inc.	Alyeska	0	0	0	0	0	0	0
Dona Martita LLC	Arctic Wind	1	0	0	6	28	45	47
Caitlin Ann LLC	Caitlin Ann	5	0	0	472	277	11	51
Ocean Dynasty Limited Partnership	Chelsea K	3	0	1	12	55	53	78
Dona Martita LLC	Dona Martita	0	0	0	3	9	18	28
Hickory Wind LLC	Hickory Wind	0	0	0	2	0	13	16
U.S. Marine Corporation	Ocean Hope 3	1	7	0	2	0	9	85
Pacific Knight LLC	Pacific Knight	0	0	0	0	0	0	0
Pacific Prince LLC	Pacific Prince	2	0	1	11	29	86	77
Viking Limited Partnership	Viking	1	0	1	8	29	30	418
Westward Limited Partnership	Westward 1	2	0	1	7	29	67	171
Coop Total		18	7	5	529	502	414	1,055

Exhibit 13. Westward Fleet Cooperative vessel-by-vessel total groundfish catch (landed and discarded), 2009.

GF Sp/Area	AK Command	Alyeska	Arctic Wind	Caitlin Ann	Chelsea K	Dona Martilia	Hick Wind	Ocean Hope 3	Pacific Prince	Viking	Westward I	WFC Total
Landed Catch (mt)												
Pollock BS	11,995	0	6,512	3,248	15,058	4,570	1,006	1,243	8,503	7,263	6,677	66,074
Pcod BSAI	82	0	63	474	102	11	2	21	53	41	49	897
Rocksole BSAI	153	0	90	54	164	5	0	23	7	93	87	676
Flathead BSAI	55	0	28	14	74	5	0	9	36	35	43	299
Otherspec BSAI	39	0	28	13	55	3	0	9	18	43	30	240
Pollock AI	0	0	117	0	0	0	0	0	0	0	0	117
Arrowtooth BSAI	16	0	4	3	16	0	0	4	5	8	8	64
Yellowfin BSAI	1	0	2	22	4	0	0	0	0	0	2	32
Oflats BSAI	2	0	0	0	5	0	0	1	0	1	1	10
POP BS	0	0	0	0	0	0	0	2	0	0	0	2
AKPlaiice BSAI	0	0	0	0	0	0	0	0	0	0	0	2
Squid BSAI	0	0	0	0	0	0	0	0	0	0	0	1
ORockfish BS	0	0	0	0	0	0	0	1	0	0	0	1
Mackeral BS/541	0	0	0	0	0	0	0	0	0	0	0	0
Turbot BS	0	0	0	0	0	0	0	0	0	0	0	0
Northern BSAI	0	0	0	0	0	0	0	0	0	0	0	0
Shortraker BSAI	0	0	0	0	0	0	0	0	0	0	0	0
Turbot AI	0	0	0	0	0	0	0	0	0	0	0	0
POP 541	0	0	0	0	0	0	0	0	0	0	0	0
POP 542	0	0	0	0	0	0	0	0	0	0	0	0
POP 543	0	0	0	0	0	0	0	0	0	0	0	0
Pollock BS	11	0	6	93	53	2	0	0	8	7	6	186
Pcod BSAI	1	0	1	2	5	1	0	0	1	0	0	10
Rocksole BSAI	3	0	2	16	6	0	0	1	2	2	2	34
Flathead BSAI	2	0	1	5	3	0	0	0	1	1	1	14
Otherspec BSAI	6	0	2	17	7	0	1	2	5	2	2	43
Pollock AI	0	0	0	0	10	0	0	0	0	0	0	10
Arrowtooth BSAI	1	0	0	8	1	0	0	0	0	0	0	11
Yellowfin BSAI	0	0	0	0	0	0	0	0	0	0	0	0
Oflats BSAI	0	0	0	0	0	0	0	0	0	0	0	1
POP BS	0	0	0	0	0	0	0	0	0	0	0	0
AKPlaiice BSAI	0	0	0	0	0	0	0	0	0	0	0	0
Squid BSAI	0	0	0	0	0	0	0	0	0	0	0	0
ORockfish BS	0	0	0	0	0	0	0	0	0	0	0	0
Mackeral BS/541	0	0	0	0	0	0	0	0	0	0	0	0
Turbot BS	0	0	0	0	0	0	0	0	0	0	0	0
Northern BSAI	0	0	0	0	0	0	0	0	0	0	0	0
Shortraker BSAI	0	0	0	0	0	0	0	0	0	0	0	0
Turbot AI	0	0	0	0	0	0	0	0	0	0	0	0
POP 541	0	0	0	0	0	0	0	0	0	0	0	0
POP 542	0	0	0	0	0	0	0	0	0	0	0	0
POP 543	0	0	0	0	0	0	0	0	0	0	0	0
Discarded Catch (mt)												

* fished by two other vessels under Amendment 69 contract

Note:

Total landings and discards by vessel are provided by Seastate including any adjustments from final NMFS observer data and represent all directed or incidental catch of both landings and discards taken in all WFC fishing in 2009. Discards of non-sideboard species are accounted for by MRA compliance primarily during the directed cod fishing.

ATTACHMENT 1

WFC MEMBERSHIP AGREEMENT 2009 ADDENDUM

WESTWARD FLEET COOPERATIVE

MEMBERSHIP AGREEMENT

2009 ADDENDUM

Each of the undersigned hereby acknowledges and agrees that the terms and conditions of the Westward Fleet Cooperative Membership Agreement dated as of December 23, 1999, as amended by that First Amendment to Membership Agreement dated as of January 15, 2004, and that Membership Agreement Addendum dated as of January 12, 2006 shall be in full force and effect among the undersigned for the year 2009, and that Exhibit A attached hereto supersedes Exhibit A to the Membership Agreement and to all prior amendments and addenda thereto.

In addition, each of the undersigned hereby certifies that the vessel on behalf of which it is executing this Addendum: (i) delivered more pollock to Westward Seafoods, Inc. than to any other AFA inshore processor in the last year in which the vessel engaged in directed fishing for pollock in the BSAI for delivery to the inshore sector; (ii) is a qualified catcher vessel; (iii) is otherwise eligible to fish for groundfish in the BSAI; (iv) has an AFA catcher vessel permit with an inshore endorsement; and (v) has no permit sanctions or other type of sanctions against it that would prevent it from fishing for groundfish in the BSAI.

Dated effective as of December 1, 2008.

F/V ALASKAN COMMAND
Alaskan Command L.L.C.

By: [Signature]
Its: ENIC MANAGER

F/V ALYESKA
Wa'atch, Inc.

By: [Signature]
Its: POA

F/V ARCTIC WIND
Dona Martita LLC

By: _____
Its: _____

F/V CAITLIN ANN
Caitlin Ann, LLC

By: [Signature]
Its: member

[SIGNATURES CONTINUED ON PAGE 2]

WESTWARD FLEET COOPERATIVE

MEMBERSHIP AGREEMENT

2009 ADDENDUM

Each of the undersigned hereby acknowledges and agrees that the terms and conditions of the Westward Fleet Cooperative Membership Agreement dated as of December 23, 1999, as amended by that First Amendment to Membership Agreement dated as of January 15, 2004, and that Membership Agreement Addendum dated as of January 12, 2006 shall be in full force and effect among the undersigned for the year 2009, and that Exhibit A attached hereto supersedes Exhibit A to the Membership Agreement and to all prior amendments and addenda thereto.

In addition, each of the undersigned hereby certifies that the vessel on behalf of which it is executing this Addendum: (i) delivered more pollock to Westward Seafoods, Inc. than to any other AFA inshore processor in the last year in which the vessel engaged in directed fishing for pollock in the BSAI for delivery to the inshore sector; (ii) is a qualified catcher vessel; (iii) is otherwise eligible to fish for groundfish in the BSAI; (iv) has an AFA catcher vessel permit with an inshore endorsement; and (v) has no permit sanctions or other type of sanctions against it that would prevent it from fishing for groundfish in the BSAI.

Dated effective as of December 1, 2008.

F/V ALASKAN COMMAND
Alaskan Command L.L.C.


F/V ALYESKA
Wa'atch, Inc.

By: _____
Its: _____

By: _____
Its: _____

F/V ARCTIC WIND
Dona Martita LLC

F/V CAITLIN ANN
Caitlin Ann, LLC

By: 
Its: Mgr. Member

By: _____
Its: _____

[SIGNATURES CONTINUED ON PAGE 2]

F/V CHELSEA K
Ocean Dynasty Limited Partnership

By: [Signature]
Its: ENG MANAGER

F/V DONA MARTITA
Dona Martita LLC

By: _____
Its: _____

F/V HICKORY WIND
Hickory Wind, LLC

By: [Signature]
Its: manager

F/V OCEAN HOPE 3
Ocean Hope 3 LLC

By: _____
Its: _____

F/V PACIFIC KNIGHT
Pacific Knight LLC

By: [Signature]
Its: ENG MANAGER

F/V PACIFIC PRINCE
Pacific Prince, LLC

By: [Signature]
Its: member

F/V VIKING
Viking Limited Partnership

By: [Signature]
Its: ENG MANAGER

F/V WESTWARD 1
Westward Limited Partnership

By: [Signature]
Its: ENG MANAGER

WESTWARD FLEET COOPERATIVE

By: [Signature]
Its: EXECUTIVE DIRECTOR

F/V CHELSEA K
Ocean Dynasty Limited Partnership

By: _____
Its: _____

F/V DONA MARTITA
Dona Martita LLC

By: _____
Its: _____

F/V HICKORY WIND
Hickory Wind, LLC

By: _____
Its: _____

F/V OCEAN HOPE 3
Ocean Hope 3 LLC

By: *MF* MICHAEL FARIS
Its: MANAGER

F/V PACIFIC KNIGHT
Pacific Knight LLC

By: _____
Its: _____

F/V PACIFIC PRINCE
Pacific Prince, LLC

By: _____
Its: _____

F/V VIKING
Viking Limited Partnership

By: _____
Its: _____

F/V WESTWARD 1
Westward Limited Partnership

By: _____
Its: _____

WESTWARD FLEET COOPERATIVE

By: _____
Its: _____

F/V CHELSEA K
Ocean Dynasty Limited Partnership

By: _____
Its: _____

F/V DONA MARTITA
Dona Martita LLC

By: _____
Its: _____
[Handwritten signature]

F/V HICKORY WIND
Hickory Wind, LLC

By: _____
Its: _____

F/V OCEAN HOPE 3
Ocean Hope 3 LLC

By: _____
Its: _____

F/V PACIFIC KNIGHT
Pacific Knight LLC

By: _____
Its: _____

F/V PACIFIC PRINCE
Pacific Prince, LLC

By: _____
Its: _____

F/V VIKING
Viking Limited Partnership

By: _____
Its: _____

F/V WESTWARD 1
Westward Limited Partnership

By: _____
Its: _____

WESTWARD FLEET COOPERATIVE

By: _____
Its: _____

F/V CHELSEA K
Ocean Dynasty Limited Partnership

By: [Signature]
Its: ENG MANAGER

F/V DONA MARTITA
Dona Martita LLC

By: _____
Its: _____

F/V HICKORY WIND
Hickory Wind, LLC

By: _____
Its: _____

F/V OCEAN HOPE 3
Ocean Hope 3 LLC

By: _____
Its: _____

F/V PACIFIC KNIGHT
Pacific Knight LLC

By: [Signature]
Its: ENG MANAGER

F/V PACIFIC PRINCE
Pacific Prince, LLC

By: [Signature]
Its: member

F/V VIKING
Viking Limited Partnership

By: [Signature]
Its: ENG MANAGER

F/V WESTWARD 1
Westward Limited Partnership

By: [Signature]
Its: ENG MANAGER

WESTWARD FLEET COOPERATIVE

By: [Signature]
Its: EXECUTIVE DIRECTOR

WESTWARD FLEET COOPERATIVE
EXHIBIT A TO 2009 ADDENDUM

BERING SEA/ALEUTIAN ISLANDS POLLOCK FISHERY
HARVEST SCHEDULE

<i>Member</i>	<i>Vessel</i>	<i>Percentage of Allocation</i>
Alaskan Command L.L.C.	ALASKAN COMMAND	1.960%
Wa'atch, Inc.	ALYESKA	6.378%
Dona Martita LLC	ARCTIC WIND	5.829%
Caitlin Ann, LLC	CAITLIN ANN	5.050%
Ocean Dynasty Limited Partnership	CHELSEA K	24.546%
Dona Martita LLC	DONA MARTITA	11.105%
Hickory Wind, LLC	HICKORY WIND	1.517%
Ocean Hope 3 LLC	OCEAN HOPE 3	2.571%
Pacific Knight LLC	PACIFIC KNIGHT	11.520%
Pacific Prince, LLC	PACIFIC PRINCE	12.557%
Viking Limited Partnership	VIKING	8.753%
Westward Limited Partnership	WESTWARD 1	8.213%
TOTAL		100.000%

ATTACHMENT 2

AMENDMENT TO MEMBERSHIP AGREEMENT

**NOTICE OF ASSIGNMENT OF MEMBERSHIP INTEREST
AND ADHEREANCE AGREEMENT**

THIS NOTICE OF TRANSFER OF MEMBERSHIP INTEREST AND ADHEREANCE AGREEMENT ("Agreement") is entered into as of this 23rd day of July 2008, by U.S. MARINE CORPORATION, a Delaware corporation ("U.S. Marine"), and OCEAN HOPE 3 LLC, a Washington limited liability company ("Ocean Hope") with respect to the following:

A. On the basis of ownership of the vessel OCEAN HOPE 3, Official No. 652397 (the "Vessel"), U.S. Marine has been a member of the Westward Fleet Cooperative (the "Cooperative").

B. Pursuant to that certain U.S. Coast Guard Bill of Sale dated July 23, 2008, and that certain Bill of Sale and Assignment of Fishing Rights of even date therewith, U.S. Marine transferred the Vessel and associated fishing rights to Ocean Hope.

C. By this Agreement, Ocean Hope provides notice of its ownership of the Vessel and associated fishing rights, and assumes U.S. Marine's obligations under that certain Westward Fleet Cooperative Membership Agreement dated as of December 23, 1999 (as amended or restated from time to time, the "Membership Agreement").


NOW, THEREFORE, for good and valuable consideration, the sufficiency and receipt of which is hereby acknowledged, the parties agree as follows:

1. Ocean Hope hereby provides notice to the Cooperative that ownership of the Vessel and associated fishing rights, including the right to participate in the Cooperative, has been transferred to Ocean Hope.

2. In accordance with Section 6 of the Membership Agreement, Ocean Hope hereby assumes all rights and obligations of U.S. Marine under the Membership Agreement. It is Ocean Hope's intent that execution of this Agreement be deemed for all purposes to have the same legal effect as direct execution of the Membership Agreement by Ocean Hope and all existing members of the Cooperative.

EXECUTED as of the day and year first set forth above.

U.S. MARINE CORPORATION

By: 
Name: R. Michael Runyon
Title: President

OCEAN HOPE 3 LLC

By: 
Name: Michael J. Faris
Title: Manager