

FINAL REPORT OF THE
WESTWARD FLEET COOPERATIVE
YEAR 2002

PREPARED FOR:

NORTH PACIFIC FISHERY MANAGEMENT COUNCIL

JANUARY 24, 2003

PREPARED BY:

NATURAL RESOURCES CONSULTANTS, INC.
SEATTLE, WASHINGTON

FINAL REPORT OF THE
WESTWARD FLEET COOPERATIVE
YEAR 2002

Presented to the
North Pacific Fishery Management Council
January 24, 2003

TABLE OF CONTENTS

	Page
INTRODUCTION.....	1
WESTWARD FLEET MEMBER VESSELS AND CO-OP MANAGEMENT.....	1
WFC BERING SEA POLLOCK ALLOCATION TRANSFERS AND CATCH	3
SIDEBOARD LIMITATIONS, ALLOCATIONS AND CATCHES.....	4
DIRECTED BERING SEA COD AND GULF POLLOCK FISHERY	5
DIRECTED CRAB FISHING.....	5
CATCHES BY GULF SIDEBOARD EXEMPT MEMBER VESSELS	6
WFC PROHIBITED SPECIES CATCH TOTALS, 2002.....	6
WFC MONITORING AND ENFORCEMENT	6
EXHIBITS	7-17

LIST OF EXHIBITS

	Page
Exhibit 1. Schematic of Westward Fleet Cooperative Operations, year 2002.	7
Exhibit 2. Westward Fleet Cooperative member vessel initial pollock allocations expressed as a percentage of the co-op total, as a percentage of the Bering Sea directed pollock fishery, and in metric tons for the year 2002.	8
Exhibit 3. Westward Fleet Cooperative member vessel final Bering Sea directed pollock allocations for the year 2002.....	9
Exhibit 4. Comparison of Westward Fleet Cooperative member vessels directed Bering Sea pollock catches with final allocations, year 2002.	10
Exhibit 5. Directed pollock fishing catch and bycatch and PSC's for the Westward Fleet Cooperative member vessels, year 2002.	11
Exhibit 6. Sideboard limits and aggregate catch for the Westward Fleet Cooperative member vessels, year 2002.	12
Exhibit 7. Comparison of Westward Fleet Cooperative member vessels directed Bering Sea Pacific cod catches with final allocations, year 2002.	13
Exhibit 8. Directed Pacific cod fishing catch and bycatch for the Westward Fleet Cooperative member vessels, year 2002.	14
Exhibit 9. Transfers of Westward Fleet Cooperative Gulf of Alaska pollock sideboard limits to other catcher vessel co-ops, year 2002.	15
Exhibit 10. Directed crab fishing landed catch by Westward Fleet Cooperative member vessels which were qualified to harvest Bering Sea crab, year 2002.	16
Exhibit 11. Westward Fleet Cooperative vessel-by-vessel prohibited species catch, year 2002.	17

FINAL REPORT OF THE
WESTWARD FLEET COOPERATIVE
YEAR 2002

Presented to the
North Pacific Fishery Management Council
January 24, 2003

INTRODUCTION

Westward Fleet Cooperative (WFC) is pleased to submit this document and results of their 2002 Bering Sea fishery to the North Pacific Fishery Management Council (NPFMC) in compliance with annual reporting requirements of the 1998 American Fisheries Act (AFA).

Year 2002 was the third year of WFC operations under the AFA. The Westward fleet was managed and operated during 2002 following the successful model established during the 2000 and 2001 fisheries—basically without change. This document format and 11 exhibits herein reporting WFC co-op members, management, allocations, catches, sideboard limits, prohibited species catches and enforcement is also consistent with WFC's earlier years reporting to the NPFMC. We believe this reporting format and detail is both in keeping with AFA reporting requirements and provides easy comparison to the prior year results.

WESTWARD FLEET MEMBER VESSELS AND CO-OP MANAGEMENT

Eleven individual members representing 15 catcher vessels signed their third year co-op membership agreement on December 1, 2001, which enabled them to operate under the laws of the AFA in a fishery cooperative delivering pollock to Westward Seafood Inc., during the 2002 fishing season (Attachment 1).

There were three vessel changes in the 2002 Westward fleet from the year before resulting in a net increase of one vessel. New members were the 122-ft F/V Starward, formerly with the UniSea Co-operative and the 165-ft F/V Dona Martita, formally with the Akutan Co-operative. The 104-ft F/V Pacific Challenger of Chetna Inc., which was a WFC member in 2001, opted out of the WFC in 2002.

WFC year 2002 member owners and their vessels are listed below:

F. Gregory Baker, Managing Member

- F/V Viking 130 ft LOA
- F/V Chelsea K 149 ft LOA
- F/V Westward 1 127 ft LOA
- F/V Alaskan Command 185 ft LOA
- F/V Pacific Knight 165 ft LOA

John Dooley and Robert Dooley, Pacific Prince General Partnership

- F/V Pacific Prince 148 ft LOA

John Dooley and Robert Dooley

- F/V Caitlin Ann 104 ft LOA

Donald Johnson, Hickory Wind LLC

- F/V Hickory Wind 104 ft LOA

Neal Anderson, AJ LLC

- F/V AJ 138 ft LOA

Rick Mezich, Mezich Allegiance, Inc.

- F/V Fierce Allegiance 167 ft LOA

Matt Daugherty, U.S. Marine Corp.

- F/V Ocean Hope 3 112 ft LOA

Dan Green, Wa'atch, Inc.

- F/V Alyeska 125 ft LOA

Cary Swasand, Arctic Wind LLC

- F/V Arctic Wind 123 ft LOA

Cary Swasand and Aleutian Spray Fisheries, Inc.

- F/V Starward 122 ft LOA

Bob Desautel, Dona Martita, LLC

- F/V Dona Martita 165 ft LOA

Co-op management and administration continued during 2002 basically unchanged from management and administration of the two prior co-op years (Exhibit 1). Mr. Robert Dooley continued to serve as the president of Westward Fleet Cooperative and Mr. Steven Whitman continued to serve as the coordinator. Coordination of information on allocations, transfers, pollock catches, sideboard catches and prohibited species catches between the Westward plant in Dutch Harbor, the member vessels, Sea State, the Inter co-op Manager and the National Marine Fisheries Service all continued during 2002 as established in year 2000 and as conducted in 2001.

WFC BERING SEA POLLOCK ALLOCATION TRANSFERS AND CATCH

In 2002, WFC's 15 member vessels received initial AFA Bering Sea pollock allocations that totaled 139,087.951 mt and represented 10.840% of the Bering Sea directed pollock fishery. Each of the 15 vessel's initial pollock allocations are identified in Exhibit 2 showing their tonnage, each vessel's percentage of the WFC total allocation and each vessel's percentage of the 2002 directed pollock fishery total.

These initial pollock allocations were adjusted upward by 1,044.231 mt from release of pollock bycatch reserves during the 2002 season resulting in a WFC final pollock allocation of 140,132.182 mt. The release of bycatch reserves plus the initial allocations increased each vessel's pollock allocation as detailed in Exhibit 3. Next, within the co-op, several transfers of pollock allocations occurred between member vessels, also detailed in Exhibit 3, resulting in the final 2002 pollock allocations. Four of co-op member vessels, Pacific Knight, AJ, Alyeska and Dona Martita transferred all of their pollock allocations to other WFC member vessels, reducing the WFC fleet to 11 operating vessels.

Individual WFC member vessels directed Bering Sea pollock catches by the 11 vessels that operated are provided in Exhibit 4 and are compared to their respective final allocations. The WFC total directed Bering Sea pollock catch totaled 140,014.695 mt, 117.487 mt under quota, representing 99.92% quota utilization during 2002. A total of 99.527% of these deliveries were made to their affiliated processing plant, Westward Seafoods, Inc. in Dutch Harbor, Alaska.

Bycatch of other groundfish, herring, halibut, crab and salmon from the directed Bering Sea pollock fishery is detailed by member vessel in Exhibit 5. Pollock represented 99.2% of the catch of pollock plus all other groundfish.

SIDEBOARD LIMITATIONS, ALLOCATIONS AND CATCHES

Sideboard limits for the WFC vessels totaled 9,007.000 mt and were managed to a catch of 904.700 mt, about 10% of the allocation (Exhibit 6). No individual species/area sideboard allocation was exceeded. A total of 3,922.9 mt of sideboard species allocations were transferred from WFC to other co-ops, also as detailed in Exhibit 6.

DIRECTED BERING SEA COD AND GULF POLLOCK FISHERY

WFC's directed Bering Sea Pacific cod allocations, transfers and catches for 2002 are presented in Exhibit 7 by member vessel. Only three WFC members conducted directed Bering Sea cod fisheries for a total catch of 904.663 mt. These vessels operated only during the cod A/B season. Each of the three vessels cod catches was less than their cod allocation. Several transfers of WFC cod allocation were made to other co-ops, still leaving a balance of un-harvested WFC sideboard cod.

Bycatch of other groundfish, halibut, herring, crab and salmon in the WFC directed Bering Sea cod fishery is detailed in Exhibit 8. Cod comprised 87.7% of the total groundfish catch in WFC's directed Bering Sea cod fishery.

WFC's sideboard Gulf of Alaska allocations totaled 2,316 mt of Area 610 pollock, 278 mt of Area 620 pollock and 105 mt of Area 640 pollock. All areas Gulf of Alaska pollock allocation for WFC vessels totaled 2,699 mt. Of this total, 2,140.00 mt was transferred to other co-ops as reported in Exhibit 9. WFC member vessels did not fish Gulf of Alaska pollock in 2002.

DIRECTED CRAB FISHING

Two WFC member vessels (Arctic Wind and Fierce Allegiance), both of which were License Limitation Program (LLP) qualified to harvest crab, fished the 2002 opilio Tanner crab fishery and the 2002 Bristol Bay red king crab fishery. A third member vessel, Starward, was LLP qualified to fish Bristol Bay red king crab and did so. The three vessels' catches totaled 278,124 pounds of opilio Tanner and 95,881 pounds of red king crab (Exhibit 10).

CATCHES BY GULF SIDEBOARD EXEMPT MEMBER VESSELS

Two WFC member vessels (Hickory Wind and Ocean Hope 3) are Gulf of Alaska sideboard exempt. Both vessels operated within co-op guidelines and did not lease any of their Bering Sea pollock or cod.

WFC PROHIBITED SPECIES CATCH TOTALS

WFC member vessel prohibited species catch totals for herring, Bristol Bay red king crab, bairdi Tanner crab, other Tanner crab, chinook salmon and other salmon are provided in Exhibit 11.

WFC MONITORING AND ENFORCEMENT

All WFC directed Bering Sea pollock and cod catches, as well as sideboard catches and the halibut PSC were successfully managed and did not exceed allocations. The co-op was accordingly not required to take any enforcement actions.

Exhibit 1. Schematic of Westward Fleet Cooperative Operations, year 2002.

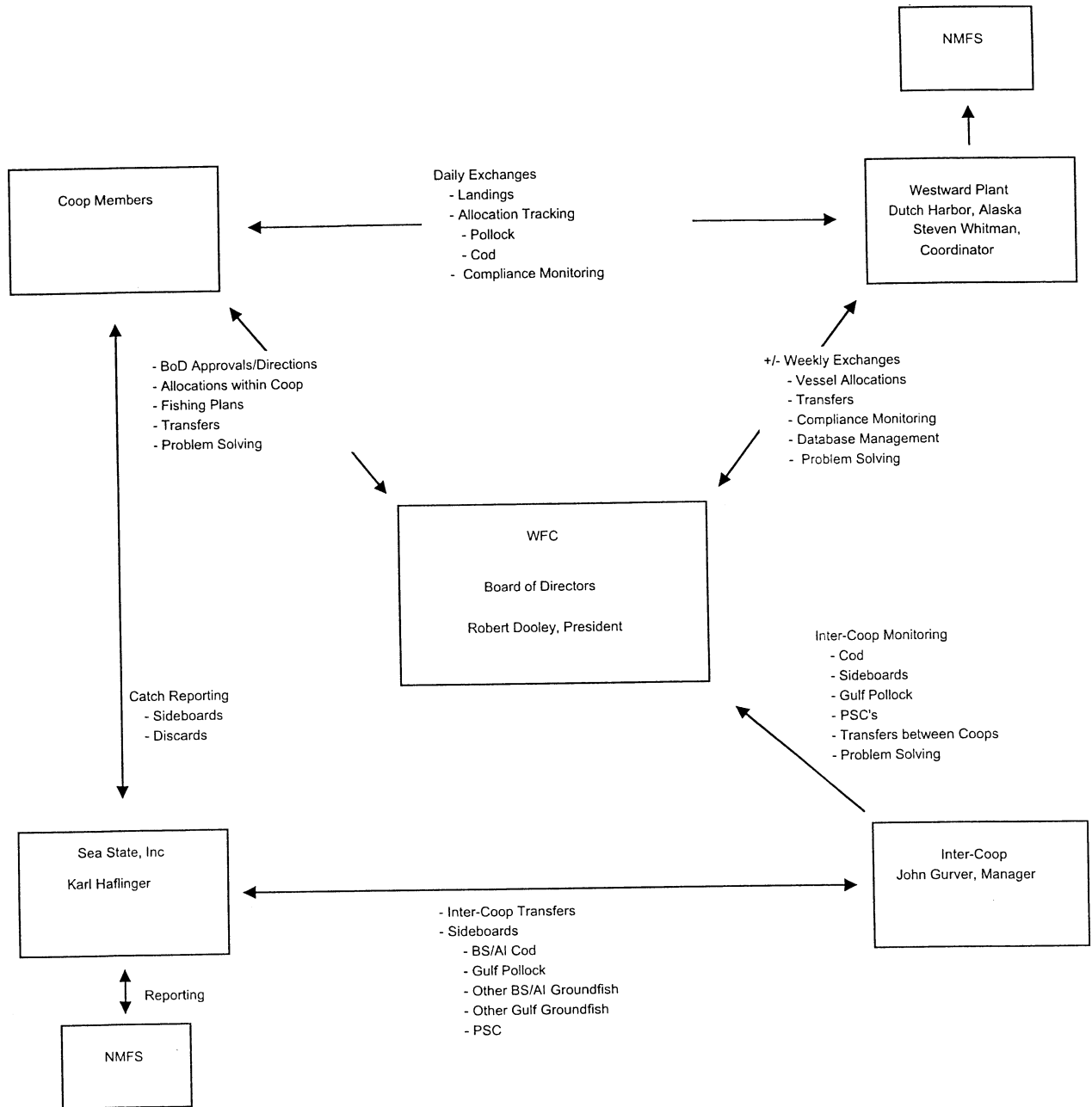


Exhibit 2. Westward Fleet Cooperative member vessel initial pollock allocations expressed as a percentage of the co-op total, as a percentage of the Bering Sea directed pollock fishery, and in metric tons for the year 2002.

Company Name	Member Vessels	% of Coop Allocation	% of AFA Directed Pollock Fishery	Year 2002 Allocation (MT)
Viking Limited Partnership	Viking	7.612%	0.825%	10,587.307
Ocean Dynasty Limited Partnership	Chelsea K	21.346%	2.314%	29,690.166
Westward Limited Partnership	Westward 1	7.142%	0.774%	9,933.458
Alaskan Command LLC	Alaskan Command	1.705%	0.185%	2,370.951
Pacific Knight LLC	Pacific Knight	10.022%	1.086%	13,939.820
Pacific Prince General Partnership	Pacific Prince	10.920%	1.184%	15,188.659
John Dooley & Robert Dooley	Caitlin Ann	4.412%	0.478%	6,136.616
Hickory Wind LLC	Hickory Wind	1.320%	0.143%	1,836.161
AJ LLC	AJ	3.088%	0.335%	4,294.981
Mezich Allegiance, Inc.	Fierce Allegiance	4.308%	0.467%	5,991.309
U.S. Marine Corporation	Ocean Hope 3	2.238%	0.243%	3,113.307
Wa'tach, Inc.	Alyeska	5.588%	0.606%	7,771.940
Arctic Wind LLC	Arctic Wind	5.070%	0.550%	7,051.664
Aleutian Spray Fisheries LLC	Starward	5.568%	0.604%	7,744.112
Dona Martita LLC	Dona Martita	9.661%	1.047%	13,437.500
Coop Total		100.000%	10.840%	139,087.951

Exhibit 3. Westward Fleet Cooperative member vessel final Bering Sea directed pollock allocations for the year 2002.

Company Name	Member Vessels	Year 2002* Allocation (MT)	Within Coop Net Transfer In & Out (MT)	Within Coop Trades	Final Pollock Allocation (MT)
Viking Limited Partnership	Viking	10,664.807	3,799.421	0	14,464.228
Ocean Dynasty Limited Partnership	Chelsea K	29,909.147	-1,697.519	0	28,211.628
Westward Limited Partnership	Westward 1	10,005.289	2,571.938	0	12,577.227
Alaskan Command LLC	Alaskan Command	2,400.618	19,486.240	0	21,886.858
Pacific Knight LLC	Pacific Knight	14,043.865	-14,043.865	0	0.000
Pacific Prince General Partnership	Pacific Prince	15,299.598	3,898.381	0	19,197.979
John Dooley & Robert Dooley	Caitlin Ann	6,182.121	4,091.494	0	10,273.615
Hickory Wind LLC	Hickory Wind	1,853.419	19.284	0	1,872.703
AJ LLC	AJ	4,319.529	-4,319.529	0	0.000
Mezich Allegiance, Inc.	Fierce Allegiance	6,042.350	3,826.778	0	9,869.128
U.S. Marine Corporation	Ocean Hope 3	3,138.319	-19.284	0	3,119.035
Wa'atch, Inc.	Alyeska	7,831.673	-7,831.673	0	0.000
Arctic Wind LLC	Arctic Wind	7,100.461	1,779.122	0	8,879.583
Aleutian Spray Fisheries LLC	Starward	7,802.854	1,977.345	0	9,780.199
Dona Martita LLC	Dona Martita	13,538.132	-13,538.132	0	0.000
Coop Total		140,132.182	0.000	0.000	140,132.182

*Allocation includes initial allocation plus a 2nd allocation from the release of by-catch reserves from other groundfish fisheries in the C/D season.

Exhibit 4. Comparison of Westward Fleet Cooperative member vessels directed Bering Sea pollock catches with final allocations, year 2002.

Company Name	Member Vessels	Final Pollock Allocation (MT)	Directed Bering Sea Pollock Catch by Vessel (MT)	Difference Over (+) Under (-)
Viking Limited Partnership	Viking	12,657.986	14,464.228	1,806.242
Ocean Dynasty Limited Partnership	Chelsea K	35,495.068	28,133.499	-7,361.569
Westward Limited Partnership	Westward 1	11,877.298	12,577.227	699.929
Alaskan Command LLC	Alaskan Command	19,144.577	21,886.858	2,742.281
Pacific Knight LLC	Pacific Knight	0.000	0.000	0.000
Pacific Prince General Partnership	Pacific Prince	17,410.169	19,268.897	1,858.728
John Dooley & Robert Dooley	Caitlin Ann	10,840.616	10,188.803	-651.813
Hickory Wind LLC	Hickory Wind	1,872.702	1,870.671	-2.031
AJ LLC	AJ	0.000	0.000	0.000
Mezich Allegiance, Inc.	Fierce Allegiance	9,289.496	9,869.128	579.632
U.S. Marine Corporation	Ocean Hope 3	3,119.035	3,095.602	-23.433
Wa'atch, Inc.	Alyeska	0.000	0.000	0.000
Arctic Wind LLC	Arctic Wind	8,614.972	8,879.583	264.611
Aleutian Spray Fisheries LLC	Starward	9,810.263	9,780.199	-30.064
Dona Martita LLC	Dona Martita	0.000	0.000	0.000
Coop Total		140,132.182	140,014.695	-117.487

Exhibit 5. Directed pollock fishing catch and bycatch and PSC's for the Westward Fleet Cooperative member vessels, year 2002.

Company Name	Member Vessels	Directed Bering Sea Pollock Catch by Vessel (MT)	Other Groundfish (MT)	Herring (MT)	Halibut (MT)	Red King Crab (#)	Bairdi Tanner Crab (#)	Tanner Crab (#)	Other Crab (#)	Chinook Salmon (#)	Other Salmon (#)
Viking Limited Partnership	Viking	14,464.228	135.184	0.154	1	0	0	0	0	624	1,370
Ocean Dynasty Limited Partnership	Chelsea K	28,133.499	171.277	0.460	2	0	0	0	0	773	2,301
Westward Limited Partnership	Westward 1	12,577.227	138.352	0.080	1	0	1	6	6	144	1,262
Alaskan Command LLC	Alaskan Command	21,886.858	154.768	5.166	2	0	2	1	1	701	2,510
Pacific Knight LLC	Pacific Knight	0.000	0.000	0.000	0	0	0	0	0	0	0
Pacific Prince General Partnership	Pacific Prince	19,268.897	124.110	0.559	2	0	0	1	1	361	1,799
John Dooley & Robert Dooley	Caitlin Ann	10,188.803	129.287	0.342	1	0	0	2	2	187	711
Hickory Wind LLC	Hickory Wind	1,870.671	8.715	0.063	0	0	0	0	0	51	203
AJ LLC	AJ	0.000	0.000	0.000	0	0	0	0	0	0	0
Mezich Allegiance, Inc.	Fierce Allegiance	9,869.128	84.274	0.105	1	0	7	28	28	197	1,713
U.S. Marine Corporation	Ocean Hope 3	3,095.602	28.038	0.689	1	0	1	0	0	69	170
Wa'tch, Inc.	Alyeska	0.000	0.000	0.000	0	0	0	0	0	0	0
Arctic Wind LLC	Arctic Wind	8,879.583	89.858	0.029	1	0	6	1	1	110	718
Aleutian Spray Fisheries LLC	Starward	9,760.199	73.450	0.040	1	0	0	0	0	192	859
Dona Martita LLC	Dona Martita	0.000	0.000	0.000	0	0	0	0	0	0	0
Coop Total		140,014.695	1,137.315	7.688	13	0	17	39	39	3,409	13,616

Exhibit 6. Sideboard limits and aggregate catch for the Westward Fleet Cooperative member vessels, year 2002.

Species/Area	Initial Westward Sideboard Limit (MT)	InterCoop Sideboard Transfer (MT)	Final Sideboard Limit (MT)	Coop Catch (MT)	Difference Over "+" (MT) Under "-" (MT)
BSAI Pacific Cod		3,350.000	2,084.000	904.700	-1,179.300
A/B Season Cod Balance	1,179.300				
BSAI P.Cod Allocation after 6/10/02	879.000				
BSAI P.Cod available for harvest 6/10/02	2,058.300	-516.900	1,541.400	0.000	-1,541.400
BSAI Yellowfin Sole	799.000	0.000	799.000	0.000	-799.000
BSAI Rock Sole	528.000	0.000	528.000	0.000	-528.000
Western GOA Pacific Cod "A" Season	103.000	0.000	103.000	0.000	-103.000
Central GOA Pacific Cod "A" Season	83.000	0.000	83.000	0.000	-83.000
Western GOA Pacific Cod "B" Season	68.000	0.000	68.000	0.000	-68.000
Central GOA Pacific Cod "B" Season	55.000	0.000	55.000	0.000	-55.000
Area 610 "A" season Pollock	381.000	-381.000	0.000	0.000	0.000
Area 620 "A" season Pollock	104.000	0.000	104.000	0.000	-104.000
Area 630 "A" season Pollock	9.000	0.000	9.000	0.000	-9.000
Shelikof "A" season Pollock	0.000	0.000	0.000	0.000	0.000
Area 610 "B" season Pollock	381.000	0.000	381.000	0.000	-381.000
Area 620 "B" season Pollock	104.000	0.000	104.000	0.000	-104.000
Area 630 "B" season Pollock	9.000	0.000	9.000	0.000	-9.000
Shelikof "B" season Pollock	0.000	0.000	0.000	0.000	0.000
Area 610 "C" season Pollock	777.000	-688.000	89.000	0.000	-89.000
Area 620 "C" season Pollock	35.000	0.000	35.000	0.000	-35.000
Area 630 "C" season Pollock	32.000	0.000	32.000	0.000	-32.000
Area 610 "D" season Pollock	777.000	-688.000	89.000	0.000	-89.000
Area 620 "D" season Pollock	35.000	0.000	35.000	0.000	-35.000
620 "A" Season Roll Over	104				
620 "B" Season Roll Over	104				
620 "C" Season Roll Over	35				
Total Available for Harvest for Area 620	278.000	-278.000	0.000	0.000	0.000
Area 630 "D" season Pollock	32.000	0.000	32.000	0.000	-32.000
Eastern GOA Pollock 640	105.000	-105.000	0.000	0.000	0.000
WGOA shallow-water flatfish	2.000	0.000	2.000	0.000	-2.000
CGOA shallow-water flatfish	225.000	0.000	225.000	0.000	-225.000
EGOA shallow-water flatfish	0.000	0.000	0.000	0.000	0.000
CGOA deep-water flatfish	0.000	0.000	0.000	0.000	0.000
CGOA Northern Rockfish	10.000	0.000	10.000	0.000	-10.000
CGOA Pacific Ocean Perch	114.000	0.000	114.000	0.000	-114.000
EGOA Pacific Ocean Perch	10.000	0.000	10.000	0.000	-10.000
Coop All Species Sideboard Total	9,007.000	-3,922.900	4,179.400	904.700	-4,179.400

PSC limited halibut for Bering Sea
Directed Pacific Cod fishery

88.000 Metric Tons up to June 10, 2002.
59.000 Metric Tons available after June 10, 2002.

Exhibit 7. Comparison of Westward Fleet Cooperative member vessels directed Bering Sea Pacific cod catches with final allocations, year 2002.

Company Name	Member Vessels		Initial Coop Cod Allocation (MT) "A/B" Season	InterCoop Transfers (MT) In (+), Out (-)	Westward Final Adjusted Cod Allocation (MT)	Directed Bering Sea Cod Catch by Vessel (MT)	Difference Over (+) Under (-) Rolled Over to C/D Season	Coop Cod Allocation (MT) "C/D" Season With Roll Over	InterCoop Transfers (MT) In (+), Out (-)	Westward Final Adjusted Cod Allocation (MT)	Directed Bering Sea Cod Catch by Vessel (MT)	Difference Over (+) Under (-)
	Alaskan Command	Other										
Alaskan Command LLC	Alaskan Command		0.000	0.000	0.000	0.000	0.000	0.000	0.000	0.000	0.000	0.000
Ocean Dynasty Limited Partnership	Chelsea K		66.332	0.000	66.332	0.000	-66.332	83.737	-83.737	0.000	0.000	0.000
Pacific Knight LLC	Pacific Knight		142.653	-142.653	0.000	0.000	0.000	37.430	-37.430	0.000	0.000	0.000
Viking Limited Partnership	Viking		313.388	-313.388	0.000	0.000	0.000	82.229	-82.229	0.000	0.000	0.000
Westward Limited Partnership	Westward 1		293.183	-293.183	0.000	0.000	0.000	76.928	-76.928	0.000	0.000	0.000
Pacific Prince General Partnership	Pacific Prince		343.700	-200.000	143.700	0.000	-143.700	233.883	0.000	233.883	0.000	-233.883
John Dooley & Robert Dooley	Caillin Ann		370.196	0.000	370.196	330.273	-39.923	137.058	0.000	137.058	0.000	-137.058
Hickory Wind LLC	Hickory Wind		105.234	0.000	105.234	0.000	-105.234	132.846	-1.660	131.186	0.000	-131.186
AJ LLC	AJ		311.039	-157.776	153.263	0.000	-153.263	234.876	-234.876	0.000	0.000	0.000
Mezich Allegiance, Inc.	Fierce Allegiance		224.169	0.000	224.169	0.000	-224.169	282.988	0.000	282.988	0.000	-282.988
U.S. Marine Corporation	Ocean Hope 3		0.000	0.000	0.000	0.000	0.000	0.000	0.000	0.000	0.000	0.000
Waatch, Inc.	Alyeska		0.000	0.000	0.000	0.000	0.000	0.000	0.000	0.000	0.000	0.000
Aleutian Spray Fisheries LLC	Starward		495.517	0.000	495.517	430.679	-64.838	194.856	0.000	194.856	0.000	-194.856
Arctic Wind LLC	Arctic Wind		362.293	-159.000	203.293	143.711	-59.583	154.644	0.000	154.644	0.000	-154.644
Dona Maritla LLC	Dona Maritla		322.297	0.000	322.297	0.000	-322.297	406.864	0.000	406.864	0.000	-406.864
Coop Total			3,350.000	-1,266.000	2,084.000	904.663	-1,179.338	2,058.339	-516.860	1,541.479	0.000	-1,541.479

* There were no transfers within Westward Fleet Cooperative for year 2002.

InterCoop Transfers Source & Destinations Shown Below:

Season	FROM	TO	TOTAL P. COD TRANSFERRED	P. COD TRANSFERRED IN MTs
A/B	WESTWARD FISHING	NORTHERN VICTOR	1,999,572	907,000
A/B	ARCTIC WIND LLC	AKUTAN COOP	360,531	159,000
A/B	PACIFIC PRINCE	HIGH SEAS COOP	440,920	200,000
TOTAL TRANSFERRED DURING A/B SEASON			2,791,024	1,266,000
C/D	WESTWARD FISHING	NORTHERN VICTOR	1,139,470	516,860
TOTAL TRANSFERRED DURING C/D SEASON			1,139,470	516.86

Exhibit 8. Directed Pacific cod fishing catch and bycatch for the Westward Fleet Cooperative member vessels, year 2002.

Company Name	Member Vessels	Directed Bering Sea Cod Catch by Vessel (MT)	Other Groundfish* Catch (MT)	Hailbut Mortality (MT)	Herring Catch (MT)	Red King Crab (#)	Bairdi Tanner Crab (#)	Other Tanner Crab (#)	Chinook Salmon (#)	Other Salmon (#)
Viking Limited Partnership	Viking	0.000	0.000	0.000	0.000	0	0	0	0	0
Ocean Dynasty Limited Partnership	Chelsea K	0.000	0.000	0.000	0.000	0	0	0	0	0
Westward Limited Partnership	Westward 1	0.000	0.000	0.000	0.000	0	0	0	0	0
Alaskan Command LLC	Alaskan Command	0.000	0.000	0.000	0.000	0	0	0	0	0
Pacific Knight LLC	Pacific Knight	0.000	0.000	0.000	0.000	0	0	0	0	0
Pacific Prince General Partnership	Pacific Prince	0.000	0.000	0.000	0.000	0	0	0	0	0
John Dooley & Robert Dooley	Caitlin Ann	330.273	30.540	5.600	0.000	0	50	29	0	0
Hickory Wind LLC	Hickory Wind	0.000	0.000	0.000	0.000	0	0	0	0	0
AJ LLC	AJ	0.000	0.000	0.000	0.000	0	0	0	0	0
Mezich Allegiance, Inc.	Fierce Allegiance	0.000	0.000	0.000	0.000	0	0	0	0	0
U.S. Marine Corporation	Ocean Hope 3	0.000	0.000	0.000	0.000	0	0	0	0	0
Wa'tach, Inc.	Alyeska	0.000	0.000	0.000	0.000	0	0	0	0	0
Arctic Wind LLC	Arctic Wind	143.711	20.481	2.650	0.000	0	0	0	2	0
Aleutian Spray Fisheries LLC	Starward	430.679	76.077	6.600	0.000	0	20	0	0	0
Dona Martita LLC	Dona Martita	0.000	0.000	0.000	0.000	0	0	0	0	0
Coop Total		904.663	127.098	14.850	0.000	0	70	29	2	0

Exhibit 9. Transfers of Westward Fleet Cooperative Gulf of Alaska pollock sideboard limits to other catcher vessel co-ops, year 2002.

Gulf Area/Season	Transfers To	Transfer Amount (MT)
610 A	Northern Victor Coop	381.000
610 B		0.000
610 C	Norther Victor Coop	688.000
610 D	Norther Victor Coop	688.000
620 D	Norther Victor Coop	278.000
640	Akutan Catcher Vessel Association	105.000
Total GOA Transfers		2,140.000

Exhibit 10. Directed crab fishing landed catch by Westward Fleet Cooperative member vessels which were qualified to harvest Bering Sea crab, year 2002.

Company Name	Member Vessel	Bristol Bay Red King Crab		Bering Sea <i>Opilio</i> Tanner Crab	
		*Pounds	*Numbers	Pounds	Numbers
Arctic Wind, LLC	Arctic Wind	27,661	4,395	128,940	99,185
Mezich Allegiance, Inc.	Fierce Allegiance	39,020	6,294	149,184	106,560
Aleutian Spray Fisheries, LLC	Starward	29,200	4,358	0	0
Coop Total		95,881	15,047	278,124	205,745

* Total Pounds and Numbers of crab include crab that was not sold but for personal use, a total of 500 lbs (82 ea) for Arctic Wind, zero (0) for Fierce Allegiance and 300 lbs (46 ea) for Starward. The Total Pounds and Numbers also include any deadloss.

Exhibit 11. Westward Fleet Cooperative vessel-by-vessel prohibited species catch, year 2002.

Company Name	Member Vessels	Halibut PSC		Total Herring Catch (MT)	Total Red King Crab (#)	Total Bairdi Tanner Crab (#)		Total Other Tanner (#)	Total Chinook Salmon (#)	Total Other Salmon (#)
		In P. Cod Fishery (MT)	In Pollock Fishery (MT)			Tanner Crab (#)	Bairdi Tanner Crab (#)			
Viking Limited Partnership	Viking	0	1	0.154	0	0	0	0	624	1,370
Ocean Dynasty Limited Partnership	Chelsea K	0	2	0.460	0	0	0	0	773	2,301
Westward Limited Partnership	Westward 1	0	1	0.080	0	1	6	1	144	1,262
Alaskan Command LLC	Alaskan Command	0	2	5.166	0	2	1	1	701	2,510
Pacific Knight LLC	Pacific Knight	0	0	0.000	0	0	0	0	0	0
Pacific Prince General Partnership	Pacific Prince	0	2	0.559	0	0	1	1	361	1,799
John Dooley & Robert Dooley	Caitlin Ann	6	1	0.342	0	50	31	0	187	711
Hickory Wind LLC	Hickory Wind	0	0	0.063	0	0	0	0	51	203
AJ LLC	AJ	0	0	0.000	0	0	0	0	0	0
Mezich Allegiance, Inc.	Fierce Allegiance	0	1	0.105	0	7	28	0	197	1,713
U.S. Marine Corporation	Ocean Hope 3	0	1	0.689	0	1	0	0	69	170
Wa'tach, Inc.	Alyeska	0	0	0.000	0	0	0	0	0	0
Arctic Wind LLC	Arctic Wind	3	1	0.029	0	6	1	1	110	718
Aleutian Spray Fisheries LLC	Starward	7	1	0.040	0	20	0	0	192	859
Dona Maritita LLC	Dona Maritita	0	0	0.000	0	0	0	0	0	0
Coop Total		15	13	7.688	0	87	68	0	3,409	13,616

ATTACHMENT 1

WFC MEMBERSHIP AGREEMENT 2002 ADDENDUM

WESTWARD FLEET COOPERATIVE

MEMBERSHIP AGREEMENT

2002 ADDENDUM

Each of the undersigned hereby acknowledges and agrees that the terms and conditions of the Westward Fleet Cooperative Membership Agreement dated as of December 23, 1999 shall be in full force and effect among the undersigned for the year 2002, and that Amended Exhibit A attached hereto supersedes Exhibit A to the Membership Agreement and Exhibit A to the 2001 Addendum.

In addition, each of the undersigned hereby certifies that the vessel on behalf of which it is executing this Addendum: (i) delivered more pollock to Westward Seafoods, Inc. than to any other AFA inshore processor in the last year in which the vessel engaged in directed fishing for pollock in the BSAI for delivery to the inshore sector; (ii) agrees to fish under terms authorized under an AFA catcher vessel permit with an inshore endorsement; and (iii) that such vessel has no permit sanctions or other type of sanctions against it that would prevent it from fishing for groundfish in the BSAI.

Dated effective as of the 1st day of December, 2001.

F/V AJ
AJ LLC

F/V ALASKAN COMMAND
Alaskan Command L.L.C.

By: _____
Its: _____

By: *[Signature]*
Its: ENGINEERING MANAGER

F/V ALYESKA
Wa'atch, Inc.

F/V ARCTIC WIND
F/V Arctic Wind LLC

By: _____
Its: _____

By: _____
Its: _____

Signatures continued on page 2

F/V CAITLIN ANN

John Dooley

F/V CAITLIN ANN

Robert Dooley
Robert Dooley

F/V CHELSEA K
Ocean Dynasty Limited Partnership

By: [Signature]
Its: ENGINEERING MANAGER

F/V DONA MARTITA
Dona Martita LLC

By: _____
Its: _____

F/V FIERCE ALLEGIANCE
Mezich Allegiance, Inc.

By: _____
Its: _____

F/V HICKORY WIND
HICKORY WIND, LLC

By: _____
Its: _____

F/V OCEAN HOPE 3
U.S. Marine Corp.

By: _____
Its: _____

F/V PACIFIC KNIGHT
Pacific Knight LLC

By: [Signature]
Its: ENGINEERING MANAGER

F/V PACIFIC PRINCE
Fishing Vessel Pacific Prince General
Partnership

By: [Signature]
Its: Partner

F/V STARWARD
Aleutian Spray Fisheries, Inc.

By: _____
Its: _____

Signatures continued on page 3

F/V VIKING
Viking Limited Partnership

F/V WESTWARD 1
Westward Limited Partnership

By: [Signature]
Its: ENGINEERING MANAGER

By: [Signature]
Its: ENGINEERING MANAGER

WESTWARD FLEET COOPERATIVE

By: Robert E. Dooly
Its: President

AMENDED EXHIBIT A

WESTWARD FLEET COOPERATIVE

BERING SEA/ALEUTIAN ISLANDS POLLOCK FISHERY
HARVEST SCHEDULE

<i>Member</i>	<i>Vessel</i>	<i>Percentage of Allocation</i>
AJ LLC	AJ	3.088%
Alaskan Command L.L.C.	ALASKAN COMMAND	1.705%
Wa'atch, Inc.	ALYESKA	5.588%
F/V Arctic Wind LLC	ARCTIC WIND	5.070%
John & Robert Dooley	CAITLIN ANN	4.412%
Ocean Dynasty Limited Partnership	CHELSEA K	21.346%
Dona Martita LLC	DONA MARTITA	9.662%
Mezich Allegiance, Inc.	FIERCE ALLEGIANCE	4.308%
Hickory Wind, LLC	HICKORY WIND	1.320%
U.S. Marine Corp.	OCEAN HOPE 3	2.238%
Pacific Knight LLC	PACIFIC KNIGHT	10.022%
Pacific Prince General Partnership	PACIFIC PRINCE	10.920%
Aleutian Spray Fisheries, Inc.	STARWARD	5.568%
Viking Limited Partnership	VIKING	7.612%
Westward Limited Partnership	WESTWARD 1	7.142%
Total		100.00%

MUNDT MACGREGOR L.L.P.
ATTORNEYS AT LAW

Jay H. Zulauf
Wm. Paul MacGregor
J. David Stahl
Matthew L. Fick
Joseph M. Sullivan
Joe B. Stansell
John H. Chun

999 Third Avenue · Suite 4200
Seattle, Washington · 98104-4082

Telephone (206) 624-5950
Facsimile (206) 624-5469

December 23, 2002

R. Shawn Griggs
Christopher J. Kerkering
Duncan R. McIntosh
Christopher S. McNulty
Elizabeth Poh
Mark A. Wilner
Christopher T. Wion

OF COUNSEL
Janet H. Cheetham

Mr. Chris Oliver
Executive Director
North Pacific Fishery Management Council
605 West Fourth, Suite 306
Anchorage, Alaska 99501-2252

SENT VIA FEDERAL EXPRESS

Re: Westward Fleet Cooperative

Dear Chris:

Enclosed please find the following documents related to the above-referenced cooperative:

- Agreement to Process dated as of December 1, 2002; and
- 2003 Addendum to Membership Agreement.

To the best of our knowledge there have been no amendments to the Membership Agreement on file with the Council.

Sincerely yours,

MUNDT MacGREGOR L.L.P.



Antonetta S. Cornwell
Paralegal

Enclosures

cc: Mr. Marcus Alden (w/out encl.)
Mr. Joseph M. Sullivan (w/out encl.)
Ms. Sue Salvesson (w/out encl.)

AGREEMENT TO PROCESS

THIS AGREEMENT TO PROCESS is entered into as of December 1, 2002 by WESTWARD SEAFOODS, INC., an Alaskan corporation ("Westward"), with reference to the following facts:

A. The American Fisheries Act (the "Act") authorizes the Secretary of Commerce to reserve portions of the Bering Sea/ Aleutian Islands ("BS/ AI") pollock inshore directed fishing allowance for harvesting only by members of qualifying fishery cooperatives.

B. Under the Act, a contract implementing a qualifying fishery cooperative must specify that (i) other than as permitted under Section 210(b)(6) of the Act, the cooperative's catcher vessels will deliver pollock in the BS/ AI directed pollock fishery only to the processor to which such vessels delivered the predominant amount of their shoreside pollock catch in the prior year, and (ii) such processor has agreed to process such pollock.

C. The owners of eighty percent (80%) of the catcher vessels that delivered more pollock to the Westward plant in Dutch Harbor, Alaska (the "Plant") in the last year in which the vessels engaged in directed fishing for pollock for delivery to the inside sector have agreed, subject to the provisions of Section 210(b)(6) of the Act and related provisions in the Westward Fleet Cooperative (the "Cooperative") Membership Agreement, to deliver pollock from the BS/ AI directed pollock fishery only to the Plant.

D. Westward is willing to agree to process the BS/ AI directed pollock fishery harvest of the Cooperative's members' vessels, to enable the Cooperative to obtain an allocation of BS/ AI pollock under Section 210 of the Act.

NOW, THEREFORE, Westward hereby agrees to purchase and process pollock harvested in the BS/ AI directed pollock fishery by the Cooperative's members' catcher vessels, on terms and conditions to be agreed upon by and between Westward and such vessels' owners. Westward hereby acknowledges and agrees that, pursuant to Section 210(b)(6) of the Act, such vessels may deliver up to ten percent (10%) of the Cooperative's BS/ AI pollock allocation to qualified shoreside processors other than Westward.

WESTWARD SEAFOODS, INC.

By J. Gregory Baker
Its President

WESTWARD FLEET COOPERATIVE

MEMBERSHIP AGREEMENT


2003 ADDENDUM

Each of the undersigned hereby acknowledges and agrees that the terms and conditions of the Westward Fleet Cooperative Membership Agreement dated as of December 23, 1999 shall be in full force and effect among the undersigned for the year 2003, and that Exhibit A attached hereto supersedes Exhibit A to the Membership Agreement and to all prior addenda thereto.


In addition, each of the undersigned hereby certifies that the vessel on behalf of which it is executing this Addendum: (i) delivered more pollock to Westward Seafoods, Inc. than to any other AFA inshore processor in the last year in which the vessel engaged in directed fishing for pollock in the BSAI for delivery to the inshore sector; (ii) agrees to fish under terms authorized under an AFA catcher vessel permit with an inshore endorsement; and (iii) that such vessel has no permit sanctions or other type of sanctions against it that would prevent it from fishing for groundfish in the BSAI.

Dated effective as of the 1st day of December, 2002.


F/V AJ
AJ LLC

By: 
Its: ATTORNEY-IN-FACT

F/V ALASKAN COMMAND
Alaskan Command L.L.C.

By: 
Its: ENGINEERING MANAGER

F/V ALYESKA
Wa'atch, Inc.

By: 
Its: ATTORNEY-IN-FACT

F/V ARCTIC WIND
F/V Arctic Wind LLC

By: _____
Its: _____

Signatures continued on page 2

WESTWARD FLEET COOPERATIVE

MEMBERSHIP AGREEMENT

2003 ADDENDUM

Each of the undersigned hereby acknowledges and agrees that the terms and conditions of the Westward Fleet Cooperative Membership Agreement dated as of December 23, 1999 shall be in full force and effect among the undersigned for the year 2003, and that Exhibit A attached hereto supersedes Exhibit A to the Membership Agreement and to all prior addenda thereto.

In addition, each of the undersigned hereby certifies that the vessel on behalf of which it is executing this Addendum: (i) delivered more pollock to Westward Seafoods, Inc. than to any other AFA inshore processor in the last year in which the vessel engaged in directed fishing for pollock in the BSAI for delivery to the inshore sector; (ii) agrees to fish under terms authorized under an AFA catcher vessel permit with an inshore endorsement; and (iii) that such vessel has no permit sanctions or other type of sanctions against it that would prevent it from fishing for groundfish in the BSAI.

Dated effective as of the 1st day of December, 2002.

F/V AJ
AJ LLC

F/V ALASKAN COMMAND
Alaskan Command L.L.C.

By: _____
Its: _____

By: _____
Its: _____

F/V ALYESKA
Wa'atch, Inc.

F/V ARCTIC WIND
F/V Arctic Wind LLC

By: _____
Its: _____

By: Cary K. Swanson
Its: Pres ASF

Signatures continued on page 2

F/V CAITLIN ANN

John A. Dooley
John Dooley

F/V CAITLIN ANN

Robert E. Dooley
Robert Dooley

F/V CHELSEA K
Ocean Dynasty Limited Partnership

By: _____
Its: _____

F/V DONA MARTITA
Dona Martita LLC

By: _____
Its: _____

F/V FIERCE ALLEGIANCE
Mezich Allegiance, Inc.

By: _____
Its: _____

F/V HICKORY WIND
HICKORY WIND, LLC

By: _____
Its: _____

F/V OCEAN HOPE 3
U.S. Marine Corp.

By: _____
Its: _____

F/V PACIFIC KNIGHT
Pacific Knight LLC

By: _____
Its: _____

F/V PACIFIC PRINCE
Fishing Vessel Pacific Prince General
Partnership

By: Robert E. Dooley
Its: partner

F/V STARWARD
Aleutian Spray Fisheries, Inc.

By: _____
Its: _____

Signatures continued on page 3

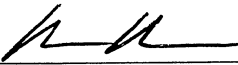
F/V CAITLIN ANN

John Dooley

F/V CAITLIN ANN

Robert Dooley

F/V CHELSEA K
Ocean Dynasty Limited Partnership

By: 
Its: ENGINEERING MANAGER

F/V DONA MARTITA
Dona Martita LLC

By: _____
Its: _____

F/V FIERCE ALLEGIANCE
Mezich Allegiance, Inc.

By: _____
Its: _____

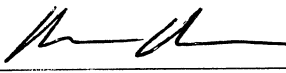
F/V HICKORY WIND
HICKORY WIND, LLC

By: _____
Its: _____

F/V OCEAN HOPE 3
U.S. Marine Corp.

By: _____
Its: _____

F/V PACIFIC KNIGHT
Pacific Knight LLC

By: 
Its: ENGINEERING MANAGER

F/V PACIFIC PRINCE
Fishing Vessel Pacific Prince General
Partnership

By: _____
Its: _____

F/V STARWARD
Aleutian Spray Fisheries, Inc.

By: _____
Its: _____

Signatures continued on page 3

F/V CAITLIN ANN

F/V CAITLIN ANN

John Dooley

Robert Dooley

F/V CHELSEA K
Ocean Dynasty Limited Partnership

F/V DONA MARTITA
Dona Martita LLC

By: _____
Its: _____

By: Kathy Shepard
Its: Member Offices

F/V FIERCE ALLEGIANCE
Mezich Allegiance, Inc.

F/V HICKORY WIND
HICKORY WIND, LLC

By: _____
Its: _____

By: _____
Its: _____

F/V OCEAN HOPE 3
U.S. Marine Corp.

F/V PACIFIC KNIGHT
Pacific Knight LLC

By: _____
Its: _____

By: _____
Its: _____

F/V PACIFIC PRINCE
Fishing Vessel Pacific Prince General
Partnership

F/V STARWARD
Aleutian Spray Fisheries, Inc.

By: _____
Its: _____

By: _____
Its: _____

Signatures continued on page 3

F/V CAITLIN ANN

John Dooley

F/V CAITLIN ANN

Robert Dooley

F/V CHELSEA K
Ocean Dynasty Limited Partnership

By: _____
Its: _____

F/V DONA MARTITA
Dona Martita LLC

By: _____
Its: _____

F/V FIERCE ALLEGIANCE
Mezich Allegiance, Inc.

By: *Dale Mezich*
Its: President

F/V HICKORY WIND
HICKORY WIND, LLC

By: _____
Its: _____

F/V OCEAN HOPE 3
U.S. Marine Corp.

By: _____
Its: _____

F/V PACIFIC KNIGHT
Pacific Knight LLC

By: _____
Its: _____

F/V PACIFIC PRINCE
Fishing Vessel Pacific Prince General
Partnership

By: _____
Its: _____

F/V STARWARD
Aleutian Spray Fisheries, Inc.

By: _____
Its: _____

Signatures continued on page 3

F/V CAITLIN ANN

F/V CAITLIN ANN

John Dooley

Robert Dooley

F/V CHELSEA K
Ocean Dynasty Limited Partnership

F/V DONA MARTITA
Dona Martita LLC

By: _____
Its: _____

By: _____
Its: _____

F/V FIERCE ALLEGIANCE
Mezich Allegiance, Inc.

F/V HICKORY WIND
HICKORY WIND, LLC

By: _____
Its: _____

By: *Donald A. Johnson*
Its: *Owner/manager*

F/V OCEAN HOPE 3
U.S. Marine Corp.

F/V PACIFIC KNIGHT
Pacific Knight LLC

By: _____
Its: _____

By: _____
Its: _____

F/V PACIFIC PRINCE
Fishing Vessel Pacific Prince General
Partnership

F/V STARWARD
Aleutian Spray Fisheries, Inc.

By: _____
Its: _____

By: _____
Its: _____

Signatures continued on page 3

Affa,
Manus Alden

F/V CAITLIN ANN

John Dooley

F/V CAITLIN ANN

Robert Dooley

F/V CHELSEA K
Ocean Dynasty Limited Partnership

By: _____
Its: _____

F/V DONA MARTITA
Dona Martita LLC

By: _____
Its: _____

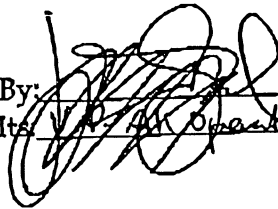
F/V FIERCE ALLEGIANCE
Mezich Allegiance, Inc.

By: _____
Its: _____

F/V HICKORY WIND
HICKORY WIND, LLC

By: _____
Its: _____

F/V OCEAN HOPE 3
U.S. Marine Corp.

By:  _____
Its: *for Operations* _____

F/V PACIFIC KNIGHT
Pacific Knight LLC

By: _____
Its: _____

F/V PACIFIC PRINCE
Fishing Vessel Pacific Prince General
Partnership

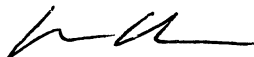
By: _____
Its: _____

F/V STARWARD
Aleutian Spray Fisheries, Inc.

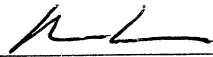
By: _____
Its: _____

Signatures continued on page 3

F/V VIKING
Viking Limited Partnership

By: 
Its: ENGINEERING MANAGER

F/V WESTWARD 1
Westward Limited Partnership

By: 
Its: ENGINEERING MANAGER

F/V PACIFIC CHALLENGER

Chester T. Peterson

WESTWARD FLEET COOPERATIVE

By: _____
Its: _____

5-24-1997 9:57PM
Nov 22 02 09:51a

FROM
Chris & Melody Peterson 253-856-1241

P. 2
P. 2

F/V VIKING
Viking Limited Partnership

F/V WESTWARD 1
Westward Limited Partnership

By: _____
Its: _____

By: _____
Its: _____

F/V PACIFIC CHALLENGER


Chester T. Peterson

WESTWARD FLEET COOPERATIVE

By: _____
Its: _____

F/V VIKING
Viking Limited Partnership

F/V WESTWARD 1
Westward Limited Partnership

By: _____
Its: _____

By: _____
Its: _____

F/V PACIFIC CHALLENGER

Chester T. Peterson

WESTWARD FLEET COOPERATIVE

By: Robert E. Dooly
Its: president

EXHIBIT A

WESTWARD FLEET COOPERATIVE

BERING SEA/ ALEUTIAN ISLANDS POLLOCK FISHERY
HARVEST SCHEDULE

<i>Member</i>	<i>Vessel</i>	<i>Percentage of Allocation</i>
AJ LLC	AJ	%
Alaskan Command L.L.C.	ALASKAN COMMAND	%
Wa'atch, Inc.	ALYESKA	%
F/V Arctic Wind LLC	ARCTIC WIND	%
John & Robert Dooley	CAITLIN ANN	%
Ocean Dynasty Limited Partnership	CHELSEA K	%
Dona Martita LLC	DONA MARTITA	%
Mezich Allegiance, Inc.	FIERCE ALLEGIANCE	%
Hickory Wind, LLC	HICKORY WIND	%
U.S. Marine Corp.	OCEAN HOPE 3	%
Pacific Knight LLC	PACIFIC KNIGHT	%
Pacific Prince General Partnership	PACIFIC PRINCE	%
Aleutian Spray Fisheries, Inc.	STARWARD	%
Viking Limited Partnership	VIKING	%
Westward Limited Partnership	WESTWARD 1	%
Chester T. Peterson	PACIFIC CHALLENGER	%
Total		100.00%