

**FINAL REPORT OF THE  
UNISEA FLEET COOPERATIVE  
YEAR 2001**

**Presented to the  
North Pacific Fishery Management Council  
January 30, 2002**



## TABLE OF CONTENTS

	Page
INTRODUCTION.....	1
UNISEA FLEET MEMBER VESSELS AND CO-OP MANAGEMENT.....	1
UFC BERING SEA POLLOCK ALLOCATION TRASFERS AND CATCH.....	3
OUTSIDE UNISEA PROCESSOR DELIVERIES.....	3
SIDEBOARD LIMITATIONS AND CATCHES.....	4
DIRECTED BERING SEA COD AND GULF POLLOCK FISHERY.....	4
DIRECTED CRAB FISHING.....	4
UFC PROHIBITED SPECIES CATCH TOTALS, 2001.....	5
UFC MONITORING AND ENFORCEMENT.....	5
EXHIBITS 6-18	
ATTACHMENT	

## LIST OF EXHIBITS

Exhibit 1.	Schematic of UniSea Fleet Cooperative Operations, year 2001.....	6
Exhibit 2.	UniSea Fleet Cooperative member vessel initial pollock allocations expressed as a percentage of the co-op total, as a percentage of the Bering Sea directed pollock fishery, and in metric tons for the year 2001.....	7
Exhibit 3.	UniSea Fleet Cooperative year 2001 Bering Sea pollock allocations after purchase of F/V <i>Pacific Monarch</i> . ....	8
Exhibit 4.	UniSea Fleet Cooperative member vessel final Bering Sea directed pollock allocations for the year 2001. ....	9
Exhibit 5.	Comparison of UniSea Fleet Cooperative member vessels directed Bering Sea pollock catches with final allocations, year 2001. ....	10
Exhibit 6.	Directed pollock fishing catch and bycatch and PSC's for the UniSea Fleet Cooperative member vessels, year 2001.....	11
Exhibit 8.	Sideboard limits and aggregate catch for the UniSea Fleet Cooperative member vessels, year 2001. ....	13
Exhibit 9.	Comparison of UniSea Fleet Cooperative member vessels directed Bering Sea Pacific cod catches with final allocations, year 2001. ....	14
Exhibit 10.	Directed Pacific cod fishing catch and bycatch for the UniSea Fleet Cooperative member vessels, year 2001. ....	15
Exhibit 11.	Transfers of UniSea Fleet Cooperative Gulf of Alaska pollock sideboard limits to other catcher vessel co-ops, year 2001.....	16
Exhibit 12.	Directed crab fishing landed catch by UniSea Fleet Cooperative member vessels which were qualified to harvest Bering Sea crab.....	17
Exhibit 13.	UniSea Fleet Cooperative vessel-by-vessel prohibited species catch, year 2001.....	18

**FINAL REPORT OF THE  
UNISEA FLEET COOPERATIVE  
YEAR 2001**

**Presented to the  
North Pacific Fishery Management Council  
January 30, 2002**

**INTRODUCTION**

UniSea Fleet Cooperative (UFC) is pleased to submit this document and results of their 2001 Bering Sea fishery to the North Pacific Fishery Management Council (NPFMC) in compliance with annual reporting requirements of the 1998 American Fisheries Act (AFA).

Year 2001 was the second year of UFC operations under the AFA. The UniSea fleet was managed and operated during 2001 following the successful model established during the 2000 fishery—basically without change. This document format and 13 exhibits herein reporting UFC co-op members, management, allocations, catches, sideboard limits, prohibited species catches and enforcement is also consistent with UFC's year 2000 reporting to the NPFMC. We believe this reporting format and detail is both in keeping with AFA reporting requirements and provides easy comparison to the prior year results.

**UNISEA FLEET MEMBER VESSELS AND CO-OP MANAGEMENT**

Seven individual members representing 13 catcher vessels signed their second year's co-op membership agreement on December 1, 2000, which continued the original December 14, 1999, agreement and enabled them to operate under the laws of the AFA in a fishery cooperative delivering pollock to UniSea Inc. during the 2001 fishing season. One provision of this agreement "section 12 Distribution of Open Market Percentage" was changed by amendment to the membership agreement on May 10, 2001 (Attachment 1).

UFC 2001 member owners and their vessels are listed below:

Margaret Hall, General Manager, Rondy's, Inc.

- F/V *Alsea* 124 ft LOA
- F/V *Argosy* 124 ft LOA

Reidar Tynes, President, Tynes Enterprises, Inc.

- F/V *American Eagle* 120 ft LOA

Jeff Hendricks, Manager, Auriga/Aurora General Partnership

- F/V *Auriga* 193 ft LOA
- F/V *Aurora* 193 ft LOA

Barry Ohai, Manager, F/V *Defender* Limited Partnership

- F/V *Defender* 195 ft LOA

Barry Ohai, Authorized Agent, Pacmon LLC

- F/V *Pacific Monarch* 165 ft LOA

Gunnar Ildhuso, Jr., President, Ildhuso Fisheries, Inc.

- F/V *Gun-Mar* 164 ft LOA

Cary Swasand, President, Aleutian Spray Fisheries, Inc.

- F/V *Starfish* 123 ft LOA
- F/V *Starlite* 123 ft LOA
- F/V *Starward* 123 ft LOA

Cary Swasand, Blue Boat Corporation

- F/V *Nordic Star* 123 ft LOA

Fred Yeck, President, FY Fisheries, Inc.

- F/V *Sea Dawn* 124 ft LOA

Co-op management and administration continued during 2001 basically unchanged from 2000 (Exhibit 1). Mr. Jeff Hendricks continued to serve as the president of UniSea Fleet Cooperative and Mr. Pete Maloney continued to serve as the coordinator. Coordination of information on allocations, transfers, pollock catches, sideboard catches and prohibited species catches between the UniSea plant in Dutch Harbor, the member vessels, Sea State, the Inter co-op Manager and the National Marine Fisheries Service all continued during 2001 as established the prior year.

#### UFC BERING SEA POLLOCK ALLOCATION TRANSFERS AND CATCH

UFC's received an initial 2001 AFA Bering Sea pollock allocation of 147,640 mt, which in turn was allocated among their 13 member vessels (Exhibits 2 and 3). The initial allocation to UFC was adjusted upward by 1,464 mt in September 2001 due to unused pollock bycatch in other Bering Sea fisheries to a final allocation of 149,104 mt. Exhibit 4 summarizes final individual vessel directed Bering Sea pollock allocations after adjustment for the September release, after adjustment for within co-op transfers and after adjustment for outside co-op transfers. Exhibit 5 compares UFC member vessel final directed Bering Sea pollock allocations with their respective directed pollock catches. Directed Bering Sea pollock catches totaled 149,013 mt or 91 mt less than the final allocation, which provided for 99.94% utilization. Bycatch of other groundfish, herring, halibut, crab and salmon from the directed Bering Sea pollock fishery are detailed by member vessel in Exhibit 6.

#### OUTSIDE UNISEA PROCESSOR DELIVERIES

One UFC member vessel (*Starward*) delivered 7,097.221 mt of directed Bering Sea pollock to a non-affiliated inshore processor (*Westward*). These deliveries comprised 4.76% of the UFC directed Bering Sea pollock allocation, well below the AFA 10% limit on transfers to non-affiliated processors (Exhibit 7).

## SIDEBOARD LIMITATIONS AND CATCHES

Sideboard limits for the UFC co-op vessels totaled 12,484 mt as detailed by species/area in Exhibit 8. By comparison, sideboard catches totaled only 1,327 mt and no individual species/area sideboard limits were exceeded.

The UFC halibut mortality bycatch sideboard limit for the Bering Sea directed cod fishery totaled 46.212 mt compared to a halibut bycatch mortality of 19.523 mt, which resulted from this cod fishery.

## DIRECTED BERING SEA COD AND GULF POLLOCK FISHERY

UFC's directed Bering Sea Pacific cod allocations and catches are presented in Exhibit 9 by member vessel. Directed Bering Sea UFC cod catches totaled 1,149 mt, which was 528 mt below the co-op's final cod allocation. Bycatch of other groundfish, halibut, herring, crab and salmon in the UFC directed Bering cod fishery is detailed in Exhibit 10.

UFC's directed Gulf of Alaska pollock sideboard limits by Gulf regulatory area and season totaled 4202 mt as earlier noted in Exhibit 8. A total of 228 mt of this limit was transferred to other co-ops (Exhibit 11), but UFC member vessels conducted no directed pollock fishery in the Gulf of Alaska.

## DIRECTED CRAB FISHING

Nine UFC member vessels, all of which were License Limitation Program qualified to harvest crab, participated in the 2001 Bristol Bay red king crab fishery and three of these same nine vessels (*Aalsea*, *Argosy* and the *American Eagle*) also fished *opilio* Tanner crab. Their catches totaled 201,511 pounds of red king crab and 163,189 pounds of *opilio* (Exhibit 12).



## UFC PROHIBITED SPECIES CATCH TOTALS, 2001

Member vessel prohibited species catch totals for herring, Bristol Bay red king crab, *bairdi* Tanner crab, other Tanner crab, chinook salmon and other salmon are provided in Exhibit 13.

## UFC MONITORING AND ENFORCEMENT

All UFC directed Bering Sea pollock and cod catches, as well as sideboard catches and the halibut PSC were managed successfully and did not exceed allocations. The co-op was accordingly not required to take any enforcement actions.

Exhibit 1. Schematic of UniSea Fleet Cooperative Operations, year 2001.

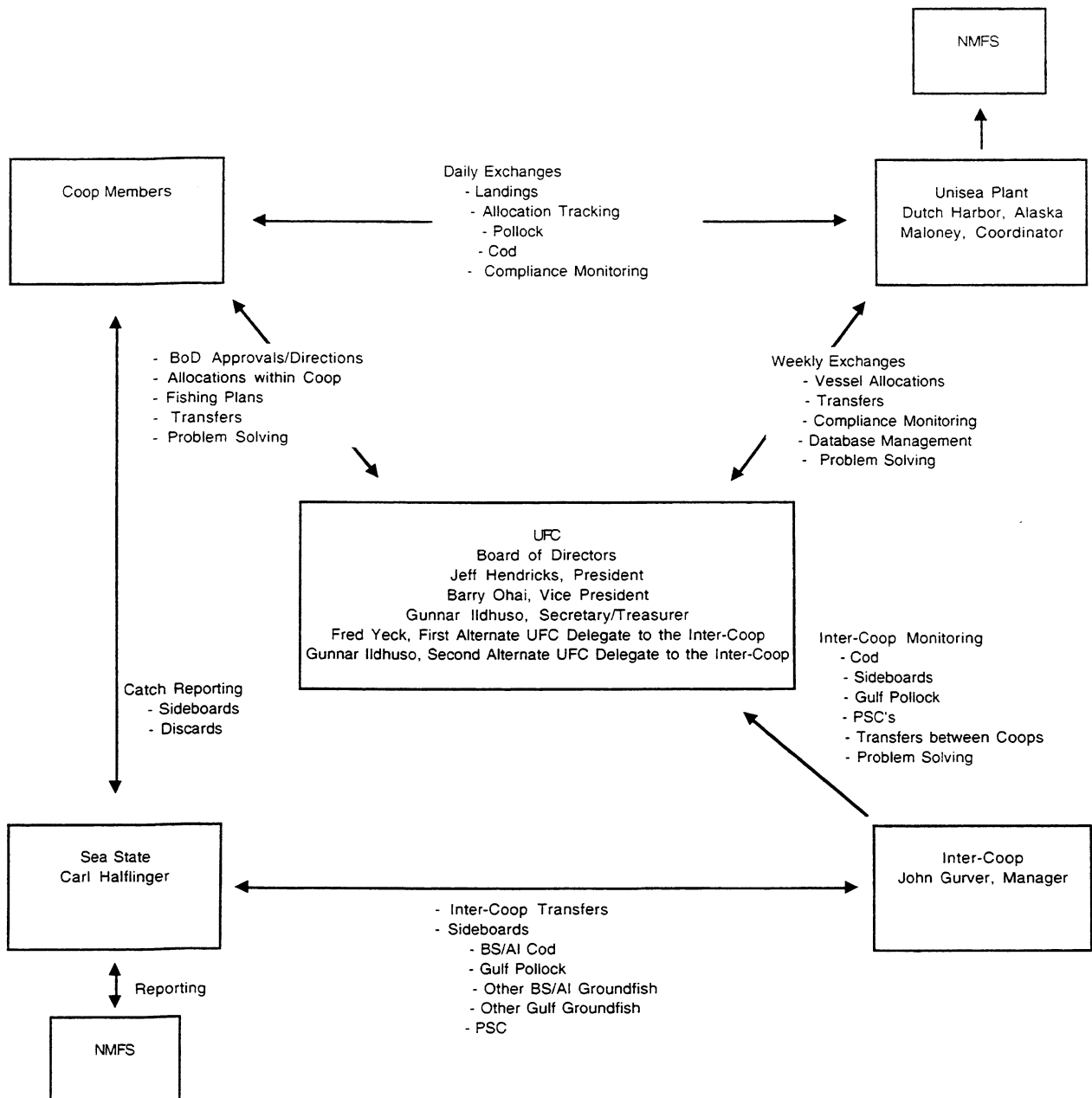


Exhibit 2. UniSea Fleet Cooperative member vessel initial pollock allocations expressed as a percentage of the co-op total, as a percentage of the Bering Sea directed pollock fishery, and in metric tons for the year 2001.

Initial Allocation		Initial Pollock Allocations		
147,640.000		% Co-op Allocation	% Directed Pollock Fishery	Year 2001 Allocation (mt)
Company Name	Member Vessels			
Rondy's, Inc.	Alsea	6.89%	0.84%	10,169.149
Rondy's, Inc.	Argosy	6.76%	0.83%	9,982.560
Tynes Enterprises, Inc.	American Eagle	4.42%	0.54%	6,530.080
Aurora/Auriga General Partnership	Auriga	12.07%	1.47%	17,816.773
Aurora/Auriga General Partnership	Aurora	13.59%	1.66%	20,068.469
F/V Defender Limited Partnership	Defender	14.34%	1.75%	21,170.357
Ilduhuso Fisheries, Inc.	GunMar	9.19%	1.12%	13,571.435
Blue Boat Corporation	Nordic Star	4.18%	0.51%	6,176.270
Aleutian Spray Fisheries, Inc.	Starfish	6.16%	0.75%	9,093.583
Aleutian Spray Fisheries, Inc.	Starlite	5.07%	0.62%	7,489.773
Aleutian Spray Fisheries, Inc.	Starward	4.98%	0.61%	7,355.626
FY Fisheries, Inc.	SeaDawn	5.73%	0.70%	8,453.770
PacMon LLC	Pacific Monarch	6.61%	0.81%	9,762.154
Co-op Total		100.00%	12.21%	147,640.000

Exhibit 3. UniSea Fleet Cooperative year 2001 Bering Sea pollock allocations after purchase of F/V *Pacific Monarch*.

Total Season Initial Allocation:					
147,640		Initial	PacMon	Pacific Monarch	
Company Name	Member Vessels	% Co-op Allocation	Pollock Allocation Transfer	Adjusted Pollock Allocation Percent	Metric Tons
Rondys, Inc.	Alsea	6.8878%	0.5198%	7.4076%	10,936.566
Rondys, Inc.	Argosy	6.7614%	0.5103%	7.2717%	10,736.004
Tynes Enterprises, Inc.	American Eagle	4.4230%	0.3336%	4.7566%	7,022.671
Aurora/Auriga General Partnership	Auriga	12.0677%	0.9102%	12.9779%	19,160.627
Aurora/Auriga General Partnership	Aurora	13.5928%	1.0254%	14.6182%	21,582.343
F/V Defender Limited Partnership	Defender	14.3392%	1.0814%	15.4206%	22,766.911
Ildhuso Fisheries, Inc.	GunMar	9.1922%	0.6933%	9.8856%	14,595.047
Blue Boat Corporation	Nordic Star	4.1833%	0.3155%	4.4988%	6,642.077
Aleutian Spray Fisheries, Inc.	Starfish	6.1593%	0.4646%	6.6239%	9,779.484
Aleutian Spray Fisheries, Inc.	Starlite	5.0730%	0.3825%	5.4555%	8,054.564
Aleutian Spray Fisheries, Inc.	Starward	4.9821%	0.3754%	5.3576%	7,909.937
FY Fisheries, Inc.	Seadawn	5.7259%	0.0000%	5.7259%	8,453.770
PacMon LLC	Pacific Monarch	6.6121%	-6.2367%	0.0000%	0.000
PacMon Quota Transfer to Aleutian Spray - see transfers		-	-0.3754%	-0.3754%	0.000 *
Co-op Total		100.0000%	0.0000%	99.6246%	147,640.000

\* 215.881 metric tons of pollock transferred from F/V Starward to Aleutian Spray Fisheries - see Transfers

Exhibit 4. UniSea Fleet Cooperative member vessel final Bering Sea directed pollock allocations for the year 2001.

Pollock Transfers & Final Allocation		Year 2001	Within Co-op	Outside Co-op	Year 2001	Final
Company Name	Member Vessels	Initial Pollock Allocation (mt)	Net Transfer In & Out (mt)	Net Transfer In & Out (mt)	Additional Pollock Allocation (mt)	Pollock Allocation (mt)
Rondys, Inc.	Alsea	10,936.566	-98.047	-	108.447	10,946.966
Rondys, Inc.	Argosy	10,736.004	-31.589	-	106.458	10,810.873
Tynes Enterprises, Inc.	American Eagle	7,022.671	-30.626	-	69.637	7,061.682
Aurora/Auriga General Partnership	Auriga	19,160.627	112.403	-	189.997	19,463.027
Aurora/Auriga General Partnership	Aurora	21,582.343	-120.816	-	214.011	21,675.537
F/V Defender Limited Partnership	Defender	22,766.911	-51.378	-	225.757	22,941.290
Ilduhuso Fisheries, Inc.	GunMar	14,595.047	-15.048	-	144.725	14,724.723
Blue Boat Corporation	Nordic Star	6,642.077	-35.340	-	65.863	6,672.600
Aleutian Spray Fisheries, Inc.	Starfish	9,779.484	222.926	-	96.973	10,099.383
Aleutian Spray Fisheries, Inc.	Starlite	8,054.564	-3.493	-	79.869	8,130.940
Aleutian Spray Fisheries, Inc.	Starward	7,909.937	221.058	-215.881 *	78.435	7,993.549
FY Fisheries, Inc.	SeaDawn	8,453.770	45.831	-	83.828	8,583.429
Co-op Totals		147,640.000	215.881	-215.881	1,464.000	149,104.000

\* 215.881 metric tons of pollock transferred from F/V Starward to Aleutian Spray Fisheries

Exhibit 5. Comparison of UniSea Fleet Cooperative member vessels directed Bering Sea pollock catches with final allocations, year 2001.

Final Pollock Allocation v. Catch  
Unisea Co-op Vessels, BS 2001

Company Name	Member Vessels	Final Pollock Allocation (mt)	Directed Bering Sea Pollock Catch by Vessel (mt)	Difference Over (+) Under (-)
Rondy's, Inc.	Aalsea	10,946.966	10,946.739	-0.227
Rondy's, Inc.	Argosy	10,810.873	10,810.649	-0.224
Tynes Enterprises, Inc.	American Eagle	7,061.682	7,027.749	-33.933
Aurora/Auriga General Partnership	Auriga	19,463.027	19,460.358	-2.669
Aurora/Auriga General Partnership	Aurora	21,675.537	21,623.281	-52.256
F/V Defender Limited Partnership	Defender	22,941.290	22,940.815	-0.475
Ilduhso Fisheries, Inc.	GunMar	14,724.723	14,724.417	-0.306
Blue Boat Corporation	Nordic Star	6,672.600	6,672.459	-0.141
Aleutian Spray Fisheries, Inc.	Starfish	10,099.383	10,099.176	-0.207
Aleutian Spray Fisheries, Inc.	Starlite	8,130.940	8,130.769	-0.171
Aleutian Spray Fisheries, Inc.	Starward	7,993.549	7,993.380	-0.169
FY Fisheries, Inc.	SeaDawn	8,583.429	8,583.252	-0.177
Co-op Total		149,104.000	149,013.045	-90.954

Exhibit 6. Directed pollock fishing catch and bycatch and PSC's for the UniSea Fleet Cooperative member vessels, year 2001.

Company Name	Member Vessels	Directed Bering Sea Pollock Landed Catch (mt)	Other Groundfish Catch (mt)	Halibut Mortality Catch (mt)	Herring Catch (mt)	Red King Crab (#)	<i>bairdi</i> Tanner Crab (#)	Other Tanner Crab (#)	Chinook Salmon (#)	Other Salmon (#)
Rondy's, Inc.	Alesia	10,947	106	2	5	0	0	0	168	131
Rondy's, Inc.	Argosy	10,811	112	0	4	0	0	1	106	510
Tynes Enterprises, Inc.	American Eagle	7,028	43	0	1	0	0	2	78	397
Aurora/Auriga General Partnership	Auriga	19,460	208	5	1	0	0	0	155	223
Aurora/Auriga General Partnership	Aurora	21,623	218	7	1	0	1	0	289	125
F/V Defender Limited Partnership	Defender	22,941	314	2	1	0	17	4	215	387
Iiduhuso Fisheries, Inc.	GunMar	14,724	159	1	1	0	0	0	129	405
Blue Boat Corporation	Nordic Star	6,672	92	1	1	0	0	2	106	567
Aleutian Spray Fisheries, Inc.	Starfish	10,099	111	0	1	0	0	0	109	563
Aleutian Spray Fisheries, Inc.	Starlite	8,131	52	0	3	0	0	0	105	603
Aleutian Spray Fisheries, Inc.	Starward	7,993	85	0	1	0	0	0	112	376
FY Fisheries, Inc.	SeaDawn	8,583	73	0	1	0	0	0	85	569
Co-op Total*		149,013	1,573	21	15	0	18	9	1,657	4,856

\* Some totals are rounded to nearest metric ton or # of animals  
 Note: Catch totals are from Unisea & Seastate data

**Exhibit 7. UniSea Fleet Cooperative member vessel delivery of Bering Sea pollock to non-affiliated inshore processor, year 2001.**

**Pollock Transfers Outside the Co-op**

<u>Company Name</u>	<u>Transfer From</u>	<u>Transfer To</u>	<u>Transfer Amount (mt)</u>	<u>% Co-op Total</u>
Aleutian Spray Fisheries, Inc.	Starward	Westward Seafoods	7,097.221	4.76%
<b>Transfer Totals</b>			<b>7,097.221</b>	<b>4.76%</b>



Exhibit 8. Sideboard limits and aggregate catch for the UniSea Fleet Cooperative member vessels, year 2001.

Species/Area	Initial UFC Sideboard Limit (mt)	Inter-Co-op Sideboard Transfer (mt)	Final Sideboard Limit (mt)	Co-op Catch (mt)	Difference Over "+" (mt) Under "-" (mt)
BSAI Pacific cod	4,092	-45	4,047	1,149	-2,898
BSAI yellowfin sole	3,752	0	3,752	67	-3,685
BSAI rock sole	216	0	216	111	-105
Western GOA Pacific cod	222	0	222	0	-222
Central GOA Pacific cod	0	0	0	0	0
Area 610 "A" season pollock	900	0	900	0	-900
Area 620 "A" season pollock	0	0	0	0	0
Area 630 "A" season pollock	39	-39	0	0	0
Shelikof "A" season pollock	219	0	219	0	-219
Area 610 "B" season pollock	450	0	450	0	-450
Area 620 "B" season pollock	0	0	0	0	0
Area 630 "B" season pollock	19	-19	0	0	0
Shelikof "B" season pollock	109	-109	0	0	0
Area 610 "C" season pollock	1,284	0	1,284	0	-1,284
Area 620 "C" season pollock	0	0	0	0	0
Area 630 "C" season pollock	61	-61	0	0	0
Area 610 "D" season pollock	1,070	0	1,070	0	-1,070
Area 620 "D" season pollock	0	0	0	0	0
Area 630 "D" season pollock	51	0	51	0	-51
WGOA shallow-water flatfish	0	0	0	0	0
CGOA shallow-water flatfish	0	0	0	0	0
EGOA shallow-water flatfish	0	0	0	0	0
CGOA deep-water flatfish	0	0	0	0	0
CGOA northern rockfish	0	0	0	0	0
CGOA Pacific ocean perch	0	0	0	0	0
EGOA Pacific ocean perch	0	0	0	0	0
<b>Co-op All Species Sideboard Total</b>	<b>12,484</b>	<b>-273</b>	<b>12,211</b>	<b>1,327</b>	<b>-10,884</b>
PSC limited halibut for Bering Sea Directed cod fishery	46			19	

Note: Catch totals are from Unisea & Seastate data

Exhibit 9. Comparison of UniSea Fleet Cooperative member vessels directed Bering Sea Pacific cod catches with final allocations, year 2001.

Company Name	Member Vessels	Initial		Pacific		UFC PacMon		UFC		UFC Final		Directed Bering Sea Cod Catch by Vessel (mt)	Difference Over (+) Under (-)
		Co-op Cod Allocation (mt)	Allocation (mt)	Monarch Cod Allocation (mt)	Adjusted Cod Allocation (mt)	In (+), Out (-) Transfers (mt)	Adjusted Cod Allocation (mt)	Adjusted Cod Allocation (mt)					
Rondys, Inc.	Aalsea	144	7		151		-135	16	0	0	-16		
Rondys, Inc.	Argosy	159	7		166		-148	18	0	0	-18		
Tynes Enterprises, Inc.	American Eagle	393	5		398		0	398	116	116	-281		
Aurora/Auriga General Partnership	Auriga	3	13		16		0	16	0	0	-16		
Aurora/Auriga General Partnership	Aurora	3	14		18		0	18	0	0	-18		
F/V Defender Limited Partnership	Defender	11	15		25		0	25	0	0	-25		
Ildhuso Fisheries, Inc.	GunMar	135	10		145		0	145	0	0	-145		
Blue Boat Corporation	Nordic Star	371	4		375		0	375	269	269	-106		
PacMon LLC	Pacific Monarch	0	0		0		0	0	0	0	0		
FY Fisheries, Inc.	Seadawn	353	0		353		0	353	315	315	-38		
Aleutian Spray Fisheries, Inc.	Starfish	199	6		205		0	205	89	89	-116		
Aleutian Spray Fisheries, Inc.	Starward	0	5		5		0	5	0	0	-5		
Aleutian Spray Fisheries, Inc.	Starlite	95	5		100		0	100	357	357	257		
Co-op Total		1,865	91		1,956		-194	1,674	1,149	1,149	-528		

Note: Some totals may not add due to rounding.  
Catch totals are from Unisea data.

Exhibit 10. Directed Pacific cod fishing catch and bycatch for the UniSea Fleet Cooperative member vessels, year 2001.

Company Name	Member Vessels	Directed Bering Sea Pacific cod Landed Catch (mt)	Other Groundfish Catch (mt)	Halibut Mortality Catch (mt)	Herring Catch (mt)	Red King Crab (#)	bairdi Tanner Crab (#)	Other Tanner Crab (#)	Chinook Salmon (#)	Other Salmon (#)
Rondy's, Inc.	Aisea	0	0	0	0	0	0	0	0	0
Rondy's, Inc.	Argosy	0	0	0	0	0	0	0	0	0
Tynes Enterprises, Inc.	American Eagle	116	12	6	0	0	269	48	25	0
Aurora/Auriga General Partnership	Auriga	0	0	0	0	0	0	0	0	0
Aurora/Auriga General Partnership	Aurora	0	0	0	0	0	0	0	0	0
F/V Defender Limited Partnership	Defender	0	0	0	0	0	0	0	0	0
Ilduhuso Fisheries, Inc.	GunMar	0	0	0	0	0	0	0	0	0
Blue Boat Corporation	Nordic Star	269	6	8	0	0	288	130	49	0
Aleutian Spray Fisheries, Inc.	Starfish	89	2	1	0	0	34	34	14	0
Aleutian Spray Fisheries, Inc.	Starlite	357	11	7	0	0	223	286	87	0
Aleutian Spray Fisheries, Inc.	Starward	0	43	6	0	0	219	293	85	0
FY Fisheries, Inc.	SeaDawn	315	48	9	0	0	361	198	65	0
Co-op Total*		1,149	123	37	15	0	1,394	989	325	0

\* Some totals are rounded to nearest metric ton or # of animals  
Note: Catch and PSC totals are from Unisea & Seastate data

Exhibit 11. Transfers of UniSea Fleet Cooperative Gulf of Alaska pollock sideboard limits to other catcher vessel co-ops, year 2001.

Gulf Area/Season	Transfers To	Transfer Amount (mt)
630 A	Unalaska	39
Shelikof B	Unalaska	109
630 C	Unalaska	80
Total GOA Transfers		228

Exhibit 12. Directed crab fishing landed catch by UniSea Fleet Cooperative member vessels which were qualified to harvest Bering Sea crab, 2001.

Company Name	Member Vessel	Bristol Bay	Bering Sea
		Red King Crab Pounds	<i>opilio</i> Tanner Crab Pounds
Rondy's, Inc.	Alsa	15,960	41,864
Rondy's, Inc.	Argosy	32,560	78,647
Tynes Enterprises, Inc.	American Eagle	10,907	42,678
Aurora/Auriga General Partnership	Auriga	0	0
Aurora/Auriga General Partnership	Aurora	0	0
F/V Defender Limited Partnership	Defender	0	0
Ilduhso Fisheries, Inc.	GunMar	28,789	0
Blue Boat Corporation	Nordic Star	28,755	0
Aleutian Spray Fisheries, Inc.	Starfish	26,459	0
Aleutian Spray Fisheries, Inc.	Starlite	15,756	0
Aleutian Spray Fisheries, Inc.	Starward	19,835	0
FY Fisheries, Inc.	SeaDawn	22,490	0
Co-op Total		201,511	163,189

Note: Catch totals from Unisea data

Exhibit 13. UniSea Fleet Cooperative vessel-by-vessel prohibited species catch, year 2001.

Company Name	Member Vessel	Halibut Mortality (mt)	Herring Catch (mt)	Red King Crab (#)	<i>bairdi</i> Tanner (#)	Other Tanner (#)	Chinook Salmon (mt)	Other Salmon (mt)
Rondy's, Inc.	Alsea	2	5	0	0	0	168	131
Rondy's, Inc.	Argosy	0	4	0	0	1	106	510
Tynes Enterprises, Inc.	American Eagle	6	1	0	269	50	103	397
Aurora/Auriga General	Partine Auriga	5	1	0	0	0	155	223
Aurora/Auriga General	Partine Aurora	7	1	0	1	0	289	125
F/V Defender Limited	Partners Defender	2	1	0	17	4	215	387
Iduhuso Fisheries, Inc.	GunMar	1	1	0	0	0	129	405
Blue Boat Corporation	Nordic Star	9	1	0	288	132	155	567
Aleutian Spray Fisheries, Inc.	Starfish	1	1	0	34	34	123	563
Aleutian Spray Fisheries, Inc.	Starlite	7	3	0	223	286	192	603
Aleutian Spray Fisheries, Inc.	Starward	6	1	0	219	293	197	376
FY Fisheries, Inc.	SeaDawn	9	1	0	361	198	150	569
Co-op Total*		58	21	0	1,412	998	1,982	4,856

\* Some totals are rounded to nearest metric ton or # of animals.

Note: Catch totals from Unisea & Seastate data

ATTACHMENT 1





## FIRST AMENDMENT TO MEMBERSHIP AGREEMENT

This FIRST AMENDMENT TO MEMBERSHIP AGREEMENT is entered into as of May 10, 2001 by and among the entities and vessels listed on Exhibit A hereto, and any other members admitted pursuant to this Agreement (together, the "Members") and UNISEA FLEET COOPERATIVE, a Washington nonprofit corporation (the "Cooperative").

### RECITALS

A. The Members and the Cooperative are parties to that certain Membership Agreement dated as of December 14, 1999 (the "Membership Agreement"), the 2001 Addendum dated as of December 1, 2000, and the 2001 Amended Addendum dated as of December 28, 2000.

B. The Members and the Cooperative wish to delete the text of Section 12 of the Membership Agreement in its entirety and replace it with a new Section 12.

### AGREEMENT

Now, therefore, the members agree as follows:

1. Deletion of Provision. The members agree to delete Section 12 in its entirety and replace it with the following:

"12. Distribution of Open Market Percentage. The Members acknowledge that under the Act up to ten percent (10%) of the Allocation may be delivered to any duly qualified BS/AI shoreside pollock processor. The Members have agreed that the Cooperative is not authorized to act as a marketing association on their behalf. Therefore, the Members and the Cooperative hereby agree that each Member shall have the right to deliver up to ten percent (10%) of such Member's Harvest Schedule percentage to any duly qualified BS/AI shoreside pollock processor(s), on such terms and conditions as the Member or its duly qualified marketing agent and such processor(s) may agree."

2. Other Provisions. Each of the undersigned hereby acknowledges and agrees that the terms and conditions of the UniSea Fleet Cooperative Membership Agreement dated as of December 14, 1999 shall remain in full force and effect among the undersigned.

3. Counterparts and Fax. This Amendment may be signed in counterparts which, when taken together, shall have the same effect as a fully executed original. Delivery of a signed copy of the Amendment by telefacsimile transmission shall have the effectiveness of delivering a signed original.

Dated as of the date first set forth above.

F/V ALSEA  
by Rondys, Inc.

By Margaret Hall

Margaret Hall, General Mgr.

F/V ARGOSY  
by Rondys, Inc.

By Margaret Hall

Margaret Hall, General Mgr.

F/V AMERICAN EAGLE  
by Tynes Enterprises, Inc.

By Reidar Tynes

Reidar Tynes, President

F/V AURIGA  
F/V AURORA  
by Auriga/Aurora General Partnership

By Jeff Hendricks

Jeff Hendricks, Manager

F/V DEFENDER  
by F/V Defender Limited Partnership

By Barry Ohai

Barry Ohai, Mgr.

F/V GUN-MAR  
by Ildhuso Fisheries, Inc.

By Gunnar Ildhuso, Jr.

Gunnar Ildhuso, Jr., President

F/V NORDIC STAR  
by Blue Boat Corporation

By Barry Ohai

PACIFIC MONARCH  
by PacMon LLC

By Barry Ohai

Barry Ohai, Authorized Agent

Signatures continued on next page



**AMENDED EXHIBIT A**  
**UNISEA FLEET COOPERATIVE**  
**BERING SEA POLLOCK FISHERY**  
**HARVEST SCHEDULE**

**This Harvest Schedule is based on the best information available to the Members at the time of its preparation. It will be amended from time to time pursuant to the terms of the Cooperative's Membership Agreement.**

<b>MEMBER</b>	<b>VESSEL(S)</b>	<b>PERCENTAGE OF "ALLOCATION"</b>
Rondys, Inc.	ALSEA - ON 626517 ARGOSY - ON 611365	6.888% 6.761%
Tynes Enterprises, Inc.	AMERICAN EAGLE - ON 558605	4.423%
Aurora/Auriga General Partnership	AURIGA - ON 639547 AURORA - ON 636919	12.068% 13.593%
F/V Defender Limited Partnership	DEFENDER - ON 554030	14.339%
Ildhuso Fisheries, Inc.	GUN-MAR - ON 640130	9.192%
Blue Boat Corporation	NORDIC STAR - ON 584684	4.183%

<p><b>Aleutian Spray Fisheries, Inc.</b></p>	<p><b>STARFISH - ON 561651 STARLITE - ON 597065 STARWARD - ON 617807</b></p>	<p><b>6.159% 5.073% 4.982%</b></p>
<p><b>FY Fisheries, Inc.</b></p>	<p><b>SEADAWN - ON 548685</b></p>	<p><b>5.726%</b></p>
<p><b>PacMon LLC</b></p>	<p><b>PACIFIC MONARCH - ON 557467</b></p>	<p><b>6.612%</b></p>

