

## ***FORT HOOD FIXED WING TARGETS***

### **1. General Information:**

- 1.1. Referenced by AFI 13-212 ACC SUP FORT HOOD ADDENDUM A in chapters 2 and 3 which can be found at ..... *(This addendum is still being written and has not been published yet.)*
- 1.2. Target list is developed and approved by Fort Hood Range Safety.
- 1.3. For official use only. To be used in conjunction with all Fort Hood Range regulations and applicable Air Force Instructions, publications and unit directives.
- 1.4. Any combination of target, ordnance, aircraft and parameters not included in this list must be submitted to and approved by Fort Hood Range Safety.
- 1.5. Point of contact regarding questions or updates to this target list or AFI 13-212 ACC SUP FORT HOOD ADDENDUM A is 3 ASOG / ADO at DSN 738-3334.

### **2. Target List Columns:**

- 2.1. Name: Self Explanatory.
- 2.2. Description: Self Explanatory.
- 2.3. Lat / Long: Given in degrees, minutes, decimal minutes (DD° MM.MMM') using WGS 84 datum.
- 2.4. MGRS: Uses WGS 84 datum.
- 2.5. Elev: Given in feet above mean sea level (' MSL).
- 2.6. Aircraft: Targets were verified using the shown aircraft with the given parameters. Other aircraft must be verified through Fort Hood Range Safety before being approved.
- 2.7. Ordnance: Targets were verified using the shown ordnance with the given parameters. Other ordnance must be verified through Fort Hood Range Safety before being approved. Any target approved with a live weapon may be struck with the inert version. Conical Fin = CF. High Drag = HD. Low Drag = LD.
- 2.8. Airspeed: Given in knots.
- 2.9. Altitude: Given in feet above ground level (' AGL).
- 2.10. Heading: Given in degrees magnetic (° mag).
- 2.11. Method: Loft, toss, level or dive within the parameters given in the angle column. Loft and toss deliveries require coordination with Fort Hood Range Safety.
- 2.12. Angle: Given in degrees the nose of the aircraft is in relation to the horizon. Positive is nose up. Negative is nose down.

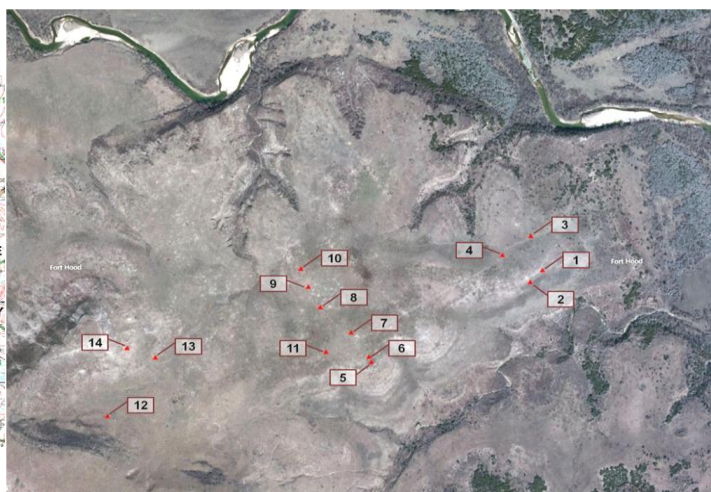
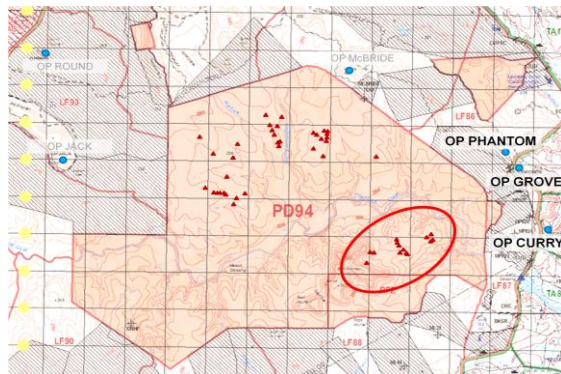
### **3. Table of Contents**

Target Area "CUAVN" -- OP Curry, OP Grove, OP Phantom ... ..	2
Target Area "McBride" -- OP McBride ... ..	5
Target Area "Jack/Round" -- OP Jack, OP Round ... ..	12

Target Area "CUAVN" center grid - 14R PV 26741 53792											
OP Curry - 14R PV 30392 54249 /// OP Grove - 14R PV 29661 55895 /// OP Phantom - 14R PV 29333 56314											
Name	Desc.	Lat / Long	MGRS	Elev (' MSL)	Aircraft	Ordnance	Airspeed (knots)	Altitude (' AGL)	Heading (' mag)	Method	Angle
CUAVN 1	Tank	N 31.12.761 W 97.39.647	14R PV 27570 53945	715'	A-10	30mm	300 - 450	3K - 18K	Any	Dive	-5 thru -45
						BDU-33	300 - 450	3K - 10K	250 - 280	Level / Dive	0 thru -45
					F-16	20mm	300 - 450	3K - 18K	220 - 000	Dive	-10 thru -45
						BDU-33	300 - 450	3K - 18K	Any	Loft / Toss / Level / Dive	15 thru -45
						BDU-50 HD	300 - 450	3K - 18K	250 - 280	Dive	-30 thru -45
Mk-82 CF / BDU-50 CF	300 - 450	3K - 10K	250 - 280	Dive	-20 thru -45						
CUAVN 2	Tank	N 31.12.734 W 97.39.676	14R PV 27524 53896	715'	A-10	30mm	300 - 450	3K - 18K	Any	Dive	-5 thru -45
						BDU-33	300 - 450	3K - 10K	250 - 280	Level / Dive	0 thru -45
					F-16	20mm	300 - 450	3K - 18K	220 - 000	Dive	-10 thru -45
						BDU-33	300 - 450	3K - 18K	Any	Loft / Toss / Level / Dive	15 thru -45
						BDU-50 HD	300 - 450	3K - 18K	250 - 280	Dive	-30 thru -45
Mk-82 CF / BDU-50 CF	300 - 450	3K - 10K	250 - 280	Dive	-20 thru -45						
CUAVN 3	Tank	N 31.12.838 W 97.39.673	14R PV 27526 54088	712'	A-10	30mm	300 - 450	3K - 18K	Any	Dive	-5 thru -45
						BDU-33	300 - 450	3K - 10K	250 - 280	Level / Dive	0 thru -45
					F-16	20mm	300 - 450	3K - 18K	220 - 000	Dive	-10 thru -45
						BDU-33	300 - 450	3K - 18K	Any	Loft / Toss / Level / Dive	15 thru -45
						BDU-50 HD	300 - 450	3K - 18K	250 - 280	Dive	-30 thru -45
Mk-82 CF / BDU-50 CF	300 - 450	3K - 10K	250 - 280	Dive	-20 thru -45						
CUAVN 4	Tank	N 31.12.795 W 97.39.740	14R PV 27420 54007	722'	A-10	30mm	300 - 450	3K - 18K	Any	Dive	-5 thru -45
						BDU-33	300 - 450	3K - 10K	250 - 280	Level / Dive	0 thru -45
					F-16	20mm	300 - 450	3K - 18K	220 - 000	Dive	-10 thru -45
						BDU-33	300 - 450	3K - 18K	Any	Loft / Toss / Level / Dive	15 thru -45
						BDU-50 HD	300 - 450	3K - 18K	250 - 280	Dive	-30 thru -45
Mk-82 CF / BDU-50 CF	300 - 450	3K - 10K	250 - 280	Dive	-20 thru -45						
CUAVN 5	Tank	N 31.12.559 W 97.40.052	14R PV 26931 53566	751'	A-10	30mm	300 - 450	3K - 18K	Any	Dive	-5 thru -45
						BDU-33	300 - 450	3K - 10K	250 - 280	Level / Dive	0 thru -45
					F-16	20mm	300 - 450	3K - 18K	220 - 000	Dive	-10 thru -45
						BDU-33	300 - 450	3K - 18K	Any	Loft / Toss / Level / Dive	15 thru -45
						BDU-50 HD	300 - 450	3K - 18K	250 - 280	Dive	-30 thru -45
GBU-12 inert	300 - 450	3K - 10K	250 - 280	Dive	-20 thru -45						
CUAVN 6	Tank	N 31.12.571 W 97.40.057	14R PV 26922 53587	754'	A-10	30mm	300 - 450	3K - 18K	Any	Dive	-5 thru -45
						BDU-33	300 - 450	3K - 10K	250 - 280	Level / Dive	0 thru -45
					F-16	20mm	300 - 450	3K - 18K	220 - 000	Dive	-10 thru -45
						BDU-33	300 - 450	3K - 18K	Any	Loft / Toss / Level / Dive	15 thru -45
						BDU-50 HD	300 - 450	3K - 18K	250 - 280	Dive	-30 thru -45
GBU-12 inert	300 - 450	3K - 10K	250 - 280	Dive	-20 thru -45						
CUAVN 7	Tank	N 31.12.626 W 97.40.098	14R PV 26856 53688	761'	A-10	30mm	300 - 450	3K - 18K	Any	Dive	-5 thru -45
						BDU-33	300 - 450	3K - 10K	250 - 280	Level / Dive	0 thru -45
						Mk-82 HD / BDU-50 HD	300 - 450	3K - 10K	250 - 280	Dive	-30 thru -45
					F-16	20mm	300 - 450	3K - 18K	220 - 000	Dive	-10 thru -45
						BDU-33	300 - 450	3K - 18K	Any	Loft / Toss / Level / Dive	15 thru -45
						BDU-50 HD	300 - 450	3K - 18K	250 - 280	Dive	-30 thru -45
GBU-12 inert	300 - 450	3K - 10K	250 - 280	Dive	-20 thru -45						
Mk-82 CF / BDU-50 CF	300 - 450	3K - 10K	250 - 280	Dive	-20 thru -45						

Target Area "CUAVN" – OP Curry, OP Grove, OP Phantom – continued...											
Name	Desc.	Lat / Long	MGRS	Elev ('MSL)	Aircraft	Ordnance	Airspeed (knots)	Altitude ('AGL)	Heading ('mag)	Method	Angle
CUAVN 8	Tank	N 31.12.683 W 97.40.170	14R PV 26741 53792	751'	A-10	30mm	300 - 450	3K - 18K	Any	Dive	-5 thru -45
						BDU-33	300 - 450	3K - 10K	250 - 280	Level / Dive	0 thru -45
						Mk-82 HD / BDU-50 HD	300 - 450	3K - 10K	250 - 280	Dive	-30 thru -45
					F-16	20mm	300 - 450	3K - 18K	220 - 000	Dive	-10 thru -45
						BDU-33	300 - 450	3K - 18K	Any	Loft / Toss / Level / Dive	15 thru -45
						BDU-50 HD	300 - 450	3K - 18K	250 - 280	Dive	-30 thru -45
						GBU-12 inert	300 - 450	3K - 10K	250 - 280	Dive	-20 thru -45
Mk-82 CF / BDU-50 CF	300 - 450	3K - 10K	250 - 280	Dive	-20 thru -45						
CUAVN 9	Tank	N 31.12.729 W 97.40.197	14R PV 26696 53877	748'	A-10	30mm	300 - 450	3K - 18K	Any	Dive	-5 thru -45
						BDU-33	300 - 450	3K - 10K	250 - 280	Level / Dive	0 thru -45
						Mk-82 HD / BDU-50 HD	300 - 450	3K - 10K	250 - 280	Dive	-30 thru -45
					F-16	20mm	300 - 450	3K - 18K	220 - 000	Dive	-10 thru -45
						BDU-33	300 - 450	3K - 18K	Any	Loft / Toss / Level / Dive	15 thru -45
						BDU-50 HD	300 - 450	3K - 18K	250 - 280	Dive	-30 thru -45
						GBU-12 inert	300 - 450	3K - 10K	250 - 280	Dive	-20 thru -45
Mk-82 CF / BDU-50 CF	300 - 450	3K - 10K	250 - 280	Dive	-20 thru -45						
CUAVN 10	Tank	N 31.12.769 W 97.40.214	14R PV 26668 53950	745'	A-10	30mm	300 - 450	3K - 18K	Any	Dive	-5 thru -45
						BDU-33	300 - 450	3K - 10K	250 - 280	Level / Dive	0 thru -45
						Mk-82 HD / BDU-50 HD	300 - 450	3K - 10K	250 - 280	Dive	-30 thru -45
					F-16	20mm	300 - 450	3K - 18K	220 - 000	Dive	-10 thru -45
						BDU-33	300 - 450	3K - 18K	Any	Loft / Toss / Level / Dive	15 thru -45
						BDU-50 HD	300 - 450	3K - 18K	250 - 280	Dive	-30 thru -45
						GBU-12 inert	300 - 450	3K - 10K	250 - 280	Dive	-20 thru -45
Mk-82 CF / BDU-50 CF	300 - 450	3K - 10K	250 - 280	Dive	-20 thru -45						
CUAVN 11	Tank	N 31.12.583 W 97.40.158	14R PV 26762 53607	754'	A-10	30mm	300 - 450	3K - 18K	Any	Dive	-5 thru -45
						BDU-33	300 - 450	3K - 10K	250 - 280	Level / Dive	0 thru -45
						Mk-82 HD / BDU-50 HD	300 - 450	3K - 10K	250 - 280	Dive	-30 thru -45
					F-16	20mm	300 - 450	3K - 18K	220 - 000	Dive	-10 thru -45
						BDU-33	300 - 450	3K - 18K	Any	Loft / Toss / Level / Dive	15 thru -45
						BDU-50 HD	300 - 450	3K - 18K	250 - 280	Dive	-30 thru -45
						GBU-12 inert	300 - 450	3K - 10K	250 - 280	Dive	-20 thru -45
Mk-82 CF / BDU-50 CF	300 - 450	3K - 10K	250 - 280	Dive	-20 thru -45						
CUAVN 12	Tank	N 31.12.444 W 97.40.673	14R PV 25947 53341	817'	A-10	30mm	300 - 450	3K - 18K	Any	Dive	-5 thru -45
						BDU-33	300 - 450	3K - 10K	250 - 280	Level / Dive	0 thru -45
						Mk-82 HD / BDU-50 HD	300 - 450	3K - 10K	250 - 280	Dive	-30 thru -45
					F-16	20mm	300 - 450	3K - 18K	220 - 000	Dive	-10 thru -45
						BDU-33	300 - 450	3K - 18K	Any	Loft / Toss / Level / Dive	15 thru -45
						BDU-50 HD	300 - 450	3K - 18K	250 - 280	Dive	-30 thru -45
						GBU-12 inert	300 - 450	3K - 10K	250 - 280	Dive	-20 thru -45
Mk-82 CF / BDU-50 CF	300 - 450	3K - 10K	250 - 280	Dive	-20 thru -45						

Target Area "CUAVN" – OP Curry, OP Grove, OP Phantom – continued...											
Name	Desc.	Lat / Long	MGRS	Elev (' MSL)	Aircraft	Ordnance	Airspeed (knots)	Altitude (' AGL)	Heading (' mag)	Method	Angle
CUAVN 13	Tank	N 31.12.575 W 97.40.559	14R PV 26126 53584	777'	A-10	30mm	300 - 450	3K - 18K	Any	Dive	-5 thru -45
						BDU-33	300 - 450	3K - 10K	250 - 280	Level / Dive	0 thru -45
						Mk-82 HD / BDU-50 HD	300 - 450	3K - 10K	250 - 280	Dive	-30 thru -45
					F-16	20mm	300 - 450	3K - 18K	220 - 000	Dive	-10 thru -45
						BDU-33	300 - 450	3K - 18K	Any	Loft / Toss / Level / Dive	15 thru -45
						BDU-50 HD	300 - 450	3K - 18K	250 - 280	Dive	-30 thru -45
						GBU-12 inert	300 - 450	3K - 10K	250 - 280	Dive	-20 thru -45
CUAVN 14	Tank	N 31.12.596 W 97.40.625	14R PV 26020 53623	830'	A-10	30mm	300 - 450	3K - 18K	Any	Dive	-5 thru -45
						BDU-33	300 - 450	3K - 10K	250 - 280	Level / Dive	0 thru -45
						Mk-82 HD / BDU-50 HD	300 - 450	3K - 10K	250 - 280	Dive	-30 thru -45
					F-16	20mm	300 - 450	3K - 18K	220 - 000	Dive	-10 thru -45
						BDU-33	300 - 450	3K - 18K	Any	Loft / Toss / Level / Dive	15 thru -45
						BDU-50 HD	300 - 450	3K - 18K	250 - 280	Dive	-30 thru -45
						GBU-12 inert	300 - 450	3K - 10K	250 - 280	Dive	-20 thru -45
Mk-82 CF / BDU-50 CF	300 - 450	3K - 10K	250 - 280	Dive	-20 thru -45						



Target Area "McBride" center grid - 14R PV 24355 56751												
OP McBride - 14R PV 25232 58489												
Name	Desc.	Lat / Long	MGRS	Elev (' MSL)	Aircraft	Ordnance	Airspeed (knots)	Altitude (' AGL)	Heading (° mag)	Method	Angle	
McBride 1	Truck	N 31 13.963 W 97 40.511	14R PV 26170 56149	731'	A-10	2.75 inert	300 - 450	3K - 10K	Any	Dive	-30 thru -45	
						30mm	300 - 450	3K - 18K	Any	Level / Dive	0 thru -45	
						BDU-33	300 - 450	3K - 18K	Any	Level / Dive	0 thru -45	
						Mk-82 CF / BDU-50 CF	300 - 450	3K - 8K	250 - 270	Dive	-30 thru -45	
						Mk-82 HD / BDU-50 HD	300 - 450	3K - 8K	250 - 280 / 070 - 100	Dive	-30 thru -45	
						Mk-83 CF/LD/HD live/inert	300 - 450	3K - 8K	Any	Dive	-30 thru -45	
					B-52	Mk-84 LD / BDU-56 LD	300 - 450	3K - 8K	Any	Dive	-30 thru -45	
						BDU-38	300 - 450	3K - 30K	250 - 280	Level	0	
						M117 CF inert	300 - 450	3K - 10K	250 - 280 / 070 - 100	Level	0	
					F-16	BDU-50 CF	300 - 450	3K - 15K	250 - 280	Level	0	
						20mm	300 - 450	3K - 18K	Any	Level / Dive	0 thru -45	
						BDU-33	300 - 450	3K - 18K	Any	Loft / Toss / Level / Dive	45 thru -45	
GBU-12 inert	300 - 450	3K - 10K	250 - 280 / 070 - 100	Dive		-20 thru -45						
Mk-82 CF / BDU-50 CF	300 - 450	3K - 10K	Any	Dive		-30 thru -45						
Mk-84 HD / BDU-56 HD	300 - 450	3K - 8K	Any	Dive	-30 thru -45							
McBride 4	Tank	N 31 14.342 W 97 41.312	14R PV 24891 56835	771'	A-10	30mm	300 - 450	3K - 18K	Any	Level / Dive	0 thru -45	
					F-16	20mm	300 - 450	3K - 18K	Any	Level / Dive	0 thru -45	
						GBU-12 inert	300 - 450	3K - 10K	250 - 280 / 070 - 100	Dive	-20 thru -45	
McBride 5	Tank	N 31 14.289 W 97 41.426	14R PV 24711 56736	774'	A-10	30mm	300 - 450	3K - 18K	Any	Level / Dive	0 thru -45	
						Mk-82 HD / BDU-50 HD	300 - 450	3K - 8K	250 - 280	Dive	-30 thru -45	
					F-16	20mm	300 - 450	3K - 18K	Any	Level / Dive	0 thru -45	
						GBU-12 inert	300 - 450	3K - 10K	250 - 280 / 070 - 100	Dive	-20 thru -45	
McBride 6	Artillery	N 31 14.317 W 97 41.470	14R PV 24640 56786	771'	A-10	30mm	300 - 450	3K - 18K	Any	Level / Dive	0 thru -45	
						Mk-82 HD / BDU-50 HD	300 - 450	3K - 8K	250 - 280	Dive	-30 thru -45	
					F-16	20mm	300 - 450	3K - 18K	Any	Level / Dive	0 thru -45	
						BDU-33	300 - 450	3K - 18K	Any	Loft / Toss / Level / Dive	45 thru -45	
						GBU-12 inert	300 - 450	3K - 10K	250 - 280 / 070 - 100	Dive	-20 thru -45	
McBride 7	Tank	N 31 14.338 W 97 41.257	14R PV 24979 56830	761'	A-10	30mm	300 - 450	3K - 18K	Any	Level / Dive	0 thru -45	
					F-16	20mm	300 - 450	3K - 18K	Any	Level / Dive	0 thru -45	
						GBU-12 inert	300 - 450	3K - 10K	250 - 280 / 070 - 100	Dive	-20 thru -45	
McBride 8	Artillery	N 31 14.298 W 97 41.267	14R PV 24964 56754	761'	A-10	30mm	300 - 450	3K - 18K	Any	Level / Dive	0 thru -45	
						Mk-82 HD / BDU-50 HD	300 - 450	3K - 8K	250 - 280	Dive	-30 thru -45	
					F-16	20mm	300 - 450	3K - 18K	Any	Level / Dive	0 thru -45	
						GBU-12 inert	300 - 450	3K - 10K	250 - 280 / 070 - 100	Dive	-20 thru -45	
McBride 9	Truck	N 31 14.255 W 97 41.265	14R PV 24967 56675	758'	A-10	30mm	300 - 450	3K - 18K	Any	Level / Dive	0 thru -45	
						Mk-82 HD / BDU-50 HD	300 - 450	3K - 8K	250 - 280	Dive	-30 thru -45	
					F-16	B-52	M117 CF inert	300 - 450	3K - 10K	250 - 280 / 070 - 100	Level	0
						20mm	300 - 450	3K - 18K	Any	Level / Dive	0 thru -45	
						BDU-33	300 - 450	3K - 18K	Any	Loft / Toss / Level / Dive	45 thru -45	
						GBU-12 inert	300 - 450	3K - 10K	250 - 280 / 070 - 100	Dive	-20 thru -45	

Target Area "McBride" – OP McBride – continued...											
Name	Desc.	Lat / Long	MGRS	Elev (' MSL)	Aircraft	Ordnance	Airspeed (knots)	Altitude (' AGL)	Heading (' mag)	Method	Angle
McBride 10	POL	N 31 14.192 W 97 41.274	14R PV 24955 56558	758'	A-10	30mm	300 - 450	3K - 18K	Any	Level / Dive	0 thru -45
						Mk-82 CF/LD / BDU-50 CF/LD	300 - 450	3K - 8K	250 - 270	Dive	-30 thru -45
						Mk-82 HD / BDU-50 HD	300 - 450	3K - 8K	250 - 280 / 070 - 100	Dive	-30 thru -45
					B-52	BDU-38	300 - 450	3K - 30K	250 - 280	Level	0
						M117 CF inert	300 - 450	3K - 10K	250 - 280 / 070 - 100	Level	0
					F-16	20mm	300 - 450	3K - 18K	Any	Level / Dive	0 thru -45
						BDU-33	300 - 450	3K - 18K	Any	Loft / Toss / Level / Dive	45 thru -45
						GBU-12 inert	300 - 450	3K - 10K	250 - 280 / 070 - 100	Dive	-20 thru -45
						Mk-82 CF / BDU-50 CF	300 - 450	3K - 10K	Any	Dive	-30 thru -45
Mk-82 LD / BDU-50 LD	300 - 450	3K - 8K	250 - 270	Dive		-30 thru -45					
McBride 11	POL	N 31 14.223 W 97 41.359	14R PV 24819 56615	771'	A-10	30mm	300 - 450	3K - 18K	Any	Level / Dive	0 thru -45
						Mk-82 CF/LD / BDU-50 CF/LD	300 - 450	3K - 8K	250 - 270	Dive	-30 thru -45
						Mk-82 HD / BDU-50 HD	300 - 450	3K - 8K	250 - 280 / 070 - 100	Dive	-30 thru -45
					B-52	BDU-38	300 - 450	3K - 30K	250 - 280	Level	0
						M117 CF inert	300 - 450	3K - 10K	250 - 280 / 070 - 100	Level	0
					F-16	20mm	300 - 450	3K - 18K	Any	Level / Dive	0 thru -45
						BDU-33	300 - 450	3K - 18K	Any	Loft / Toss / Level / Dive	45 thru -45
						GBU-12 inert	300 - 450	3K - 10K	250 - 280 / 070 - 100	Dive	-20 thru -45
						Mk-82 CF / BDU-50 CF	300 - 450	3K - 10K	Any	Dive	-30 thru -45
McBride 12	Truck	N 31 14.087 W 97 41.482	14R PV 24626 56361	771'	A-10	2.75 inert	300 - 450	3K - 10K	Any	Dive	-30 thru -45
						30mm	300 - 450	3K - 18K	Any	Level / Dive	0 thru -45
						BDU-33	300 - 450	3K - 18K	Any	Level / Dive	0 thru -45
						Mk-82 CF/LD / BDU-50 CF/LD	300 - 450	3K - 8K	250 - 270	Dive	-30 thru -45
						Mk-82 HD / BDU-50 HD	300 - 450	3K - 8K	250 - 280 / 070 - 100	Dive	-30 thru -45
						Mk-83 CF/LD/HD live/inert	300 - 450	3K - 8K	Any	Dive	-30 thru -45
					B-52	Mk-84 LD / BDU-56 LD	300 - 450	3K - 8K	Any	Dive	-30 thru -45
						BDU-38	300 - 450	3K - 30K	250 - 280 / 070 - 100	Level	0
						M117 CF inert	300 - 450	3K - 10K	250 - 280 / 070 - 100	Level	0
						BDU-50 CF	300 - 450	3K - 15K	250 - 280 / 070 - 100	Level	0
					F-16	BDU-56 CF	300 - 450	3K - 15K	250 - 280	Level	0
						20mm	300 - 450	3K - 18K	Any	Level / Dive	0 thru -45
						BDU-33	300 - 450	3K - 18K	Any	Loft / Toss / Level / Dive	45 thru -45
						GBU-12 inert	300 - 450	3K - 10K	250 - 280 / 070 - 100	Dive	-20 thru -45
						Mk-82 CF / BDU-50 CF	300 - 450	3K - 10K	Any	Dive	-30 thru -45
						Mk-82 LD / BDU-50 LD	300 - 450	3K - 8K	250 - 270	Dive	-30 thru -45
					Mk-84 HD / BDU-56 HD	300 - 450	3K - 8K	Any	Dive	-30 thru -45	

Target Area "McBride" – OP McBride – continued...											
Name	Desc.	Lat / Long	MGRS	Elev ('MSL)	Aircraft	Ordnance	Airspeed (knots)	Altitude ('AGL)	Heading ('mag)	Method	Angle
McBride 13	Truck	N 31 13.981 W 97 41.329	14R PV 24872 56168	758'	A-10	2.75 inert	300 - 450	3K - 10K	Any	Dive	-30 thru -45
						30mm	300 - 450	3K - 18K	Any	Level / Dive	0 thru -45
						BDU-33	300 - 450	3K - 18K	Any	Level / Dive	0 thru -45
						Mk-82 CF/LD / BDU-50 CF/LD	300 - 450	3K - 8K	250 - 270	Dive	-30 thru -45
						Mk-82 HD / BDU-50 HD	300 - 450	3K - 8K	250 - 280 / 070 - 100	Dive	-30 thru -45
						Mk-83 CF/LD/HD live/inert	300 - 450	3K - 8K	Any	Dive	-30 thru -45
						Mk-84 LD / BDU-56 LD	300 - 450	3K - 8K	Any	Dive	-30 thru -45
					B-52	BDU-38	300 - 450	3K - 30K	250 - 280 / 070 - 100	Level	0
						M117 CF inert	300 - 450	3K - 10K	250 - 280 / 070 - 100	Level	0
						BDU-50 CF	300 - 450	3K - 15K	250 - 280 / 070 - 100	Level	0
						BDU-56 CF	300 - 450	3K - 15K	250 - 280	Level	0
					F-16	20mm	300 - 450	3K - 18K	Any	Level / Dive	0 thru -45
						BDU-33	300 - 450	3K - 18K	Any	Loft / Toss / Level / Dive	45 thru -45
						GBU-12 inert	300 - 450	3K - 10K	250 - 280 / 070 - 100	Dive	-20 thru -45
						Mk-82 CF / BDU-50 CF	300 - 450	3K - 10K	Any	Dive	-30 thru -45
						Mk-82 LD / BDU-50 LD	300 - 450	3K - 8K	250 - 270	Dive	-30 thru -45
						Mk-84 HD / BDU-56 HD	300 - 450	3K - 8K	Any	Dive	-30 thru -45
					McBride 14	Truck	N 31 14.413 W 97 42.033	14R PV 23745 56952	754'	A-10	2.75 inert
30mm	300 - 450	3K - 18K	Any	Level / Dive							0 thru -45
BDU-33	300 - 450	3K - 18K	Any	Level / Dive							0 thru -45
Mk-82 CF/LD / BDU-50 CF/LD	300 - 450	3K - 8K	250 - 270	Dive							-30 thru -45
Mk-82 HD / BDU-50 HD	300 - 450	3K - 8K	250 - 280 / 070 - 100	Dive							-30 thru -45
Mk-83 CF/LD/HD live/inert	300 - 450	3K - 8K	Any	Dive							-30 thru -45
B-52	BDU-38	300 - 450	3K - 30K	250 - 280						Level	0
	M117 CF inert	300 - 450	3K - 10K	250 - 280 / 070 - 100						Level	0
	BDU-50 CF	300 - 450	3K - 15K	250 - 280						Level	0
F-16	20mm	300 - 450	3K - 18K	Any						Level / Dive	0 thru -45
	BDU-33	300 - 450	3K - 18K	Any						Loft / Toss / Level / Dive	45 thru -45
	GBU-12 inert	300 - 450	3K - 10K	250 - 280 / 070 - 100						Dive	-20 thru -45
	Mk-82 CF / BDU-50 CF	300 - 450	3K - 10K	Any						Dive	-30 thru -45
	Mk-82 LD / BDU-50 LD	300 - 450	3K - 8K	250 - 270						Dive	-30 thru -45

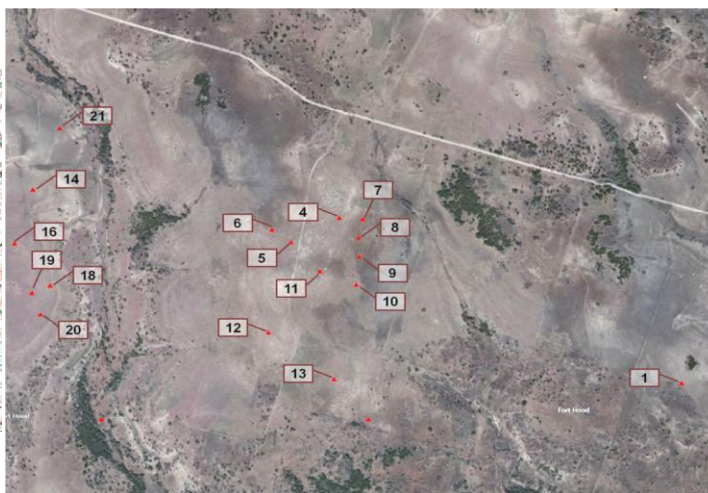
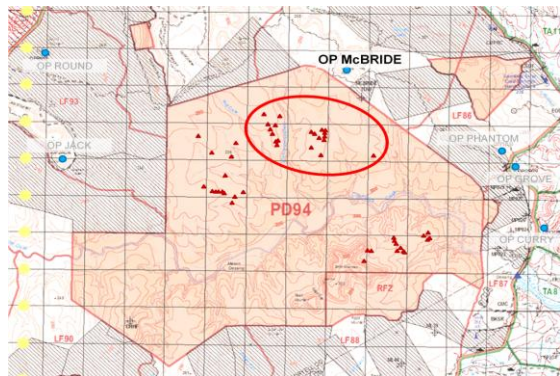
Target Area "McBride" – OP McBride – continued...											
Name	Desc.	Lat / Long	MGRS	Elev (' MSL)	Aircraft	Ordnance	Airspeed (knots)	Altitude (' AGL)	Heading (' mag)	Method	Angle
McBride 15	Truck	N 31 14.361 W 97 42.118	14R PV 23612 56855	764'	A-10	2.75 inert	300 - 450	3K - 10K	Any	Dive	-30 thru -45
						30mm	300 - 450	3K - 18K	Any	Level / Dive	0 thru -45
						BDU-33	300 - 450	3K - 18K	Any	Level / Dive	0 thru -45
						Mk-82 CF/LD / BDU-50 CF/LD	300 - 450	3K - 8K	250 - 270	Dive	-30 thru -45
						Mk-82 HD / BDU-50 HD	300 - 450	3K - 8K	250 - 280 / 070 - 100	Dive	-30 thru -45
						Mk-83 CF/LD/HD live/inert	300 - 450	3K - 8K	Any	Dive	-30 thru -45
						Mk-84 LD / BDU-56 LD	300 - 450	3K - 8K	Any	Dive	-30 thru -45
					B-52	BDU-38	300 - 450	3K - 30K	250 - 280 / 070 - 100	Level	0
						M117 CF inert	300 - 450	3K - 10K	250 - 280 / 070 - 100	Level	0
						BDU-50 CF	300 - 450	3K - 15K	250 - 280	Level	0
						BDU-56 CF	300 - 450	3K - 15K	250 - 280	Level	0
					F-16	20mm	300 - 450	3K - 18K	Any	Level / Dive	0 thru -45
						BDU-33	300 - 450	3K - 18K	Any	Loft / Toss / Level / Dive	45 thru -45
						GBU-12 inert	300 - 450	3K - 10K	250 - 280 / 070 - 100	Dive	-20 thru -45
						Mk-82 CF / BDU-50 CF	300 - 450	3K - 10K	Any	Dive	-30 thru -45
						Mk-82 LD / BDU-50 LD	300 - 450	3K - 8K	250 - 270	Dive	-30 thru -45
Mk-84 HD / BDU-56 HD	300 - 450	3K - 8K	Any	Dive		-30 thru -45					
McBride 16	Truck	N 31 14.294 W 97 42.078	14R PV 23676 56732	764'	A-10	2.75 inert	300 - 450	3K - 10K	Any	Dive	-30 thru -45
						30mm	300 - 450	3K - 18K	Any	Level / Dive	0 thru -45
						BDU-33	300 - 450	3K - 18K	Any	Level / Dive	0 thru -45
						Mk-82 CF/LD / BDU-50 CF/LD	300 - 450	3K - 8K	250 - 270	Dive	-30 thru -45
						Mk-82 HD / BDU-50 HD	300 - 450	3K - 8K	250 - 280 / 070 - 100	Dive	-30 thru -45
						Mk-83 CF/LD/HD live/inert	300 - 450	3K - 8K	Any	Dive	-30 thru -45
						Mk-84 LD / BDU-56 LD	300 - 450	3K - 8K	Any	Dive	-30 thru -45
					B-52	BDU-38	300 - 450	3K - 30K	250 - 280 / 070 - 100	Level	0
						M117 CF inert	300 - 450	3K - 10K	250 - 280 / 070 - 100	Level	0
						BDU-50 CF	300 - 450	3K - 15K	250 - 280 / 070 - 100	Level	0
						BDU-56 CF	300 - 450	3K - 15K	250 - 280	Level	0
					F-16	20mm	300 - 450	3K - 18K	Any	Level / Dive	0 thru -45
						BDU-33	300 - 450	3K - 18K	Any	Loft / Toss / Level / Dive	45 thru -45
						GBU-12 inert	300 - 450	3K - 10K	250 - 280 / 070 - 100	Dive	-20 thru -45
						Mk-82 CF / BDU-50 CF	300 - 450	3K - 10K	Any	Dive	-30 thru -45
						Mk-82 LD / BDU-50 LD	300 - 450	3K - 8K	250 - 270	Dive	-30 thru -45
Mk-84 HD / BDU-56 HD	300 - 450	3K - 8K	Any	Dive		-30 thru -45					



Target Area "McBride" – OP McBride – continued...											
Name	Desc.	Lat / Long	MGRS	Elev (' MSL)	Aircraft	Ordnance	Airspeed (knots)	Altitude (' AGL)	Heading (' mag)	Method	Angle
McBride 17	Truck	N 31 14.431 W 97 42.143	14R PV 23570 56984	771'	A-10	2.75 inert	300 - 450	3K - 10K	Any	Dive	-30 thru -45
						30mm	300 - 450	3K - 18K	Any	Level / Dive	0 thru -45
						BDU-33	300 - 450	3K - 18K	Any	Level / Dive	0 thru -45
						Mk-82 CF/LD / BDU-50 CF/LD	300 - 450	3K - 8K	250 - 270	Dive	-30 thru -45
						Mk-82 HD / BDU-50 HD	300 - 450	3K - 8K	250 - 280 / 070 - 100	Dive	-30 thru -45
						Mk-83 CF/LD/HD live/inert	300 - 450	3K - 8K	Any	Dive	-30 thru -45
						Mk-84 LD / BDU-56 LD	300 - 450	3K - 8K	Any	Dive	-30 thru -45
					B-52	BDU-38	300 - 450	3K - 30K	250 - 280	Level	0
						M117 CF inert	300 - 450	3K - 10K	250 - 280 / 070 - 100	Level	0
						BDU-50 CF	300 - 450	3K - 15K	250 - 280	Level	0
					F-16	20mm	300 - 450	3K - 18K	Any	Level / Dive	0 thru -45
						BDU-33	300 - 450	3K - 18K	Any	Loft / Toss / Level / Dive	45 thru -45
						GBU-12 inert	300 - 450	3K - 10K	250 - 280 / 070 - 100	Dive	-20 thru -45
						Mk-82 CF / BDU-50 CF	300 - 450	3K - 10K	Any	Dive	-30 thru -45
						Mk-82 LD / BDU-50 LD	300 - 450	3K - 8K	250 - 270	Dive	-30 thru -45
Mk-84 HD / BDU-56 HD	300 - 450	3K - 8K	Any	Dive		-30 thru -45					
McBride 18	Truck	N 31 14.197 W 97 41.996	14R PV 23809 56555	751'	A-10	2.75 inert	300 - 450	3K - 10K	Any	Dive	-30 thru -45
						30mm	300 - 450	3K - 18K	Any	Level / Dive	0 thru -45
						BDU-33	300 - 450	3K - 18K	Any	Level / Dive	0 thru -45
						Mk-82 CF/LD / BDU-50 CF/LD	300 - 450	3K - 8K	250 - 270	Dive	-30 thru -45
						Mk-82 HD / BDU-50 HD	300 - 450	3K - 8K	250 - 280 / 070 - 100	Dive	-30 thru -45
						Mk-83 CF/LD/HD live/inert	300 - 450	3K - 8K	Any	Dive	-30 thru -45
						Mk-84 LD / BDU-56 LD	300 - 450	3K - 8K	Any	Dive	-30 thru -45
					B-52	BDU-38	300 - 450	3K - 30K	250 - 280 / 070 - 100	Level	0
						M117 CF inert	300 - 450	3K - 10K	250 - 280 / 070 - 100	Level	0
						BDU-50 CF	300 - 450	3K - 15K	250 - 280 / 070 - 100	Level	0
						BDU-56 CF	300 - 450	3K - 15K	250 - 280	Level	0
					F-16	20mm	300 - 450	3K - 18K	Any	Level / Dive	0 thru -45
						BDU-33	300 - 450	3K - 18K	Any	Loft / Toss / Level / Dive	45 thru -45
						GBU-12 inert	300 - 450	3K - 10K	250 - 280 / 070 - 100	Dive	-20 thru -45
						Mk-82 CF / BDU-50 CF	300 - 450	3K - 10K	Any	Dive	-30 thru -45
Mk-82 LD / BDU-50 LD	300 - 450	3K - 8K	250 - 270	Dive		-30 thru -45					
Mk-84 HD / BDU-56 HD	300 - 450	3K - 8K	Any	Dive		-30 thru -45					

Target Area "McBride" – OP McBride – continued...											
Name	Desc.	Lat / Long	MGRS	Elev (' MSL)	Aircraft	Ordnance	Airspeed (knots)	Altitude (' AGL)	Heading (' mag)	Method	Angle
McBride 19	Truck	N 31 14.181 W 97 42.038	14R PV 23742 56525	761'	A-10	2.75 inert	300 - 450	3K - 10K	Any	Dive	-30 thru -45
						30mm	300 - 450	3K - 18K	Any	Level / Dive	0 thru -45
						BDU-33	300 - 450	3K - 18K	Any	Level / Dive	0 thru -45
						Mk-82 CF/LD / BDU-50 CF/LD	300 - 450	3K - 8K	250 - 270	Dive	-30 thru -45
						Mk-82 HD / BDU-50 HD	300 - 450	3K - 8K	250 - 280 / 070 - 100	Dive	-30 thru -45
						Mk-83 CF/LD/HD live/inert	300 - 450	3K - 8K	Any	Dive	-30 thru -45
						Mk-84 LD / BDU-56 LD	300 - 450	3K - 8K	Any	Dive	-30 thru -45
					B-52	BDU-38	300 - 450	3K - 30K	250 - 280 / 070 - 100	Level	0
						M117 CF inert	300 - 450	3K - 10K	250 - 280 / 070 - 100	Level	0
						BDU-50 CF	300 - 450	3K - 15K	250 - 280 / 070 - 100	Level	0
						BDU-56 CF	300 - 450	3K - 15K	250 - 280	Level	0
					F-16	20mm	300 - 450	3K - 18K	Any	Level / Dive	0 thru -45
						BDU-33	300 - 450	3K - 18K	Any	Loft / Toss / Level / Dive	45 thru -45
						GBU-12 inert	300 - 450	3K - 10K	250 - 280 / 070 - 100	Dive	-20 thru -45
						Mk-82 CF / BDU-50 CF	300 - 450	3K - 10K	Any	Dive	-30 thru -45
						Mk-82 LD / BDU-50 LD	300 - 450	3K - 8K	250 - 270	Dive	-30 thru -45
						Mk-84 HD / BDU-56 HD	300 - 450	3K - 8K	Any	Dive	-30 thru -45
					McBride 20	Truck	N 31 14.133 W 97 42.019	14R PV 23773 56435	758'	A-10	2.75 inert
30mm	300 - 450	3K - 18K	Any	Level / Dive							0 thru -45
BDU-33	300 - 450	3K - 18K	Any	Level / Dive							0 thru -45
Mk-82 CF/LD / BDU-50 CF/LD	300 - 450	3K - 8K	250 - 270	Dive							-30 thru -45
Mk-82 HD / BDU-50 HD	300 - 450	3K - 8K	250 - 280 / 070 - 100	Dive							-30 thru -45
Mk-83 CF/LD/HD live/inert	300 - 450	3K - 8K	Any	Dive							-30 thru -45
Mk-84 LD / BDU-56 LD	300 - 450	3K - 8K	Any	Dive							-30 thru -45
B-52	BDU-38	300 - 450	3K - 30K	250 - 280 / 070 - 100						Level	0
	M117 CF inert	300 - 450	3K - 10K	250 - 280 / 070 - 100						Level	0
	BDU-50 CF	300 - 450	3K - 15K	250 - 280 / 070 - 100						Level	0
	BDU-56 CF	300 - 450	3K - 15K	250 - 280						Level	0
F-16	20mm	300 - 450	3K - 18K	Any						Level / Dive	0 thru -45
	BDU-33	300 - 450	3K - 18K	Any						Loft / Toss / Level / Dive	45 thru -45
	GBU-12 inert	300 - 450	3K - 10K	250 - 280 / 070 - 100						Dive	-20 thru -45
	Mk-82 CF / BDU-50 CF	300 - 450	3K - 10K	Any						Dive	-30 thru -45
	Mk-82 LD / BDU-50 LD	300 - 450	3K - 8K	250 - 270						Dive	-30 thru -45
	Mk-84 HD / BDU-56 HD	300 - 450	3K - 8K	Any						Dive	-30 thru -45

Target Area "McBride" - OP McBride - continued...											
Name	Desc.	Lat / Long	MGRS	Elev (' MSL)	Aircraft	Ordnance	Airspeed (knots)	Altitude (' AGL)	Heading (' mag)	Method	Angle
McBride 21	Truck	N 31 14.550 W 97 41.968	14R PV 23846 57208	738'	A-10	30mm	300 - 450	3K - 18K	Any	Level / Dive	0 thru -45
						Mk-82 CF / BDU-50 CF	300 - 450	3K - 8K	250 - 270	Dive	-30 thru -45
						Mk-82 HD / BDU-50 HD	300 - 450	3K - 8K	250 - 280	Dive	-30 thru -45
					F-16	20mm	300 - 450	3K - 18K	Any	Level / Dive	0 thru -45
						BDU-33	300 - 450	3K - 18K	Any	Loft / Toss / Level / Dive	45 thru -45
						GBU-12 inert	300 - 450	3K - 10K	070 - 100	Dive	-20 thru -45
McBride 22	Truck	N 31 14.582 W 97 42.210	14R PV 23460 57262	777'	A-10	2.75 inert	300 - 450	3K - 10K	Any	Dive	-30 thru -45
						30mm	300 - 450	3K - 18K	Any	Level / Dive	0 thru -45
						BDU-33	300 - 450	3K - 18K	Any	Level / Dive	0 thru -45
						Mk-82 CF/LD / BDU-50 CF/LD	300 - 450	3K - 8K	250 - 270	Dive	-30 thru -45
						Mk-82 HD / BDU-50 HD	300 - 450	3K - 8K	250 - 280	Dive	-30 thru -45
						Mk-83 CF/LD/HD live/inert	300 - 450	3K - 8K	Any	Dive	-30 thru -45
					B-52	BDU-38	300 - 450	3K - 30K	250 - 280	Level	0
						M117 CF inert	300 - 450	3K - 10K	250 - 280 / 070 - 100	Level	0
						BDU-50 CF	300 - 450	3K - 15K	250 - 280	Level	0
					F-16	20mm	300 - 450	3K - 18K	Any	Level / Dive	0 thru -45
						BDU-33	300 - 450	3K - 18K	Any	Loft / Toss / Level / Dive	45 thru -45
						GBU-12 inert	300 - 450	3K - 10K	250 - 280 / 070 - 100	Dive	-20 thru -45
Mk-82 CF / BDU-50 CF	300 - 450	3K - 10K	Any	Dive		-30 thru -45					
Mk-82 LD / BDU-50 LD	300 - 450	3K - 8K	250 - 270	Dive		-30 thru -45					
Mk-84 HD / BDU-56 HD	300 - 450	3K - 8K	Any	Dive		-30 thru -45					



Target Area "Jack/Round" center grid - 14R PV 22479 55771											
OP Jack - 14R PV 18432 55973 /// OP Round - 14R PV 17986 58855											
Name	Desc.	Lat / Long	MGRS	Elev ('MSL)	Aircraft	Ordnance	Airspeed (knots)	Altitude ('AGL)	Heading ('mag)	Method	Angle
Jack 1	Tank	N 31 14.281 W 97 43.245	14R PV 21825 56686	797'	A-10	30mm	300 - 450	3K - 18K	Any	Level / Dive	0 thru -45
						BDU-33	300 - 450	3K - 10K	140 - 200	Dive	-10 thru -45
					F-16	20mm	300 - 450	3K - 18K	Any	Level / Dive	0 thru -45
						BDU-50 CF/HD	300 - 450	3K - 10K	140 - 200	Dive	-30 thru -45
Jack 10	Truck	N 31 13.547 W 97 43.160	14R PV 21975 55331	794'	A-10	30mm	300 - 450	3K - 18K	Any	Level / Dive	0 thru -45
						BDU-33	300 - 450	3K - 18K	140 - 200	Level / Dive	0 thru -45
					F-16	BDU-50 CF/HD	300 - 450	3K - 10K	140 - 200	Dive	-30 thru -45
						BDU-56 HD	300 - 450	3K - 15K	140 - 200	Dive	-30 thru -45
Jack 11	Tank	N 31 13.476 W 97 43.026	14R PV 22189 55204	790'	A-10	30mm	300 - 450	3K - 18K	Any	Level / Dive	0 thru -45
						BDU-33	300 - 450	3K - 10K	140 - 200	Dive	-10 thru -45
					F-16	20mm	300 - 450	3K - 18K	Any	Level / Dive	0 thru -45
						BDU-33	300 - 450	3K - 18K	140 - 200	Level / Dive	0 thru -45
Jack 12	Tank	N 31 13.471 W 97 42.977	14R PV 22267 55195	787'	A-10	30mm	300 - 450	3K - 18K	Any	Level / Dive	0 thru -45
						BDU-33	300 - 450	3K - 10K	140 - 200	Dive	-10 thru -45
					F-16	20mm	300 - 450	3K - 18K	Any	Level / Dive	0 thru -45
						BDU-33	300 - 450	3K - 18K	140 - 200	Level / Dive	0 thru -45
Jack 13	Tank	N 31 13.466 W 97 42.933	14R PV 22337 55186	787'	A-10	30mm	300 - 450	3K - 18K	Any	Level / Dive	0 thru -45
						BDU-33	300 - 450	3K - 10K	140 - 200	Dive	-10 thru -45
					F-16	20mm	300 - 450	3K - 18K	Any	Level / Dive	0 thru -45
						BDU-33	300 - 450	3K - 18K	140 - 200	Level / Dive	0 thru -45
Jack 14	Tank	N 31 13.459 W 97 42.876	14R PV 22427 55174	784'	A-10	30mm	300 - 450	3K - 18K	Any	Level / Dive	0 thru -45
						BDU-33	300 - 450	3K - 10K	140 - 200	Dive	-10 thru -45
					F-16	20mm	300 - 450	3K - 18K	Any	Level / Dive	0 thru -45
						BDU-33	300 - 450	3K - 18K	140 - 200	Level / Dive	0 thru -45
Jack 15	Tank	N 31 13.448 W 97 42.850	14R PV 22468 55155	784'	A-10	30mm	300 - 450	3K - 18K	Any	Level / Dive	0 thru -45
						BDU-33	300 - 450	3K - 10K	140 - 200	Dive	-10 thru -45
					F-16	20mm	300 - 450	3K - 18K	Any	Level / Dive	0 thru -45
						BDU-33	300 - 450	3K - 18K	140 - 200	Level / Dive	0 thru -45
Jack 16	Truck	N 31 13.401 W 97 42.678	14R PV 22744 55070	784'	A-10	30mm	300 - 450	3K - 18K	Any	Level / Dive	0 thru -45
						BDU-33	300 - 450	3K - 10K	140 - 200	Dive	-10 thru -45
					F-16	20mm	300 - 450	3K - 18K	Any	Level / Dive	0 thru -45
						BDU-33	300 - 450	3K - 18K	140 - 200	Level / Dive	0 thru -45
Jack 17-19	POL	N 31 13.309 W 97 42.716	14R PV 22684 54900	768'	A-10	30mm	300 - 450	3K - 18K	Any	Level / Dive	0 thru -45
						BDU-33	300 - 450	3K - 10K	140 - 200	Dive	-10 thru -45
					F-16	20mm	300 - 450	3K - 18K	Any	Level / Dive	0 thru -45
						BDU-33	300 - 450	3K - 18K	140 - 200	Level / Dive	0 thru -45
Jack 20	Artillery	N 31 13.458 W 97 42.547	14R PV 22950 55179	771'	A-10	30mm	300 - 450	3K - 18K	Any	Level / Dive	0 thru -45
						BDU-33	300 - 450	3K - 10K	140 - 200	Dive	-10 thru -45
					F-16	20mm	300 - 450	3K - 18K	Any	Level / Dive	0 thru -45
						BDU-33	300 - 450	3K - 18K	140 - 200	Level / Dive	0 thru -45
F-16	BDU-50 CF/HD	300 - 450	3K - 10K	140 - 200	Dive	-30 thru -45					
	BDU-56 HD	300 - 450	3K - 15K	140 - 200	Dive	-30 thru -45					

Target Area "Jack/Round" – OP Jack, OP Round – continued...											
Name	Desc.	Lat / Long	MGRS	Elev (' MSL)	Aircraft	Ordnance	Airspeed (knots)	Altitude (' AGL)	Heading (' mag)	Method	Angle
Jack Intersection South	South end of Convoy	N 31 13.701 W 97 42.824	14R PV 22505 55623	735'	A-10	30mm	300 - 450	3K - 18K	Any	Level / Dive	0 thru -45
						BDU-33	300 - 450	3K - 10K	140 - 200	Dive	-10 thru -45
					F-16	20mm	300 - 450	3K - 18K	Any	Level / Dive	0 thru -45
						BDU-33	300 - 450	3K - 18K	140 - 200	Level / Dive	0 thru -45
Jack Intersection North	North end of Convoy	N 31 14.162 W 97 42.653	14R PV 22767 56477	768'	A-10	30mm	300 - 450	3K - 18K	Any	Level / Dive	0 thru -45
						BDU-33	300 - 450	3K - 10K	140 - 200	Dive	-10 thru -45
					F-16	20mm	300 - 450	3K - 18K	Any	Level / Dive	0 thru -45
						BDU-33	300 - 450	3K - 18K	140 - 200	Level / Dive	0 thru -45
Jack Intersection West	West end of Convoy	N 31 14.027 W 97 43.035	14R PV 22162 56222	784'	A-10	30mm	300 - 450	3K - 18K	Any	Level / Dive	0 thru -45
						BDU-33	300 - 450	3K - 10K	140 - 200	Dive	-10 thru -45
					F-16	20mm	300 - 450	3K - 18K	Any	Level / Dive	0 thru -45
						BDU-33	300 - 450	3K - 18K	140 - 200	Level / Dive	0 thru -45
Jack Intersection Center	Center of Convoy	N 31 13.974 W 97 42.723	14R PV 22659 56128	768'	A-10	30mm	300 - 450	3K - 18K	Any	Level / Dive	0 thru -45
						BDU-33	300 - 450	3K - 10K	140 - 200	Dive	-10 thru -45
					F-16	20mm	300 - 450	3K - 18K	Any	Level / Dive	0 thru -45
						BDU-33	300 - 450	3K - 18K	140 - 200	Level / Dive	0 thru -45
Jack Intersection Center	Center of Convoy	N 31 13.974 W 97 42.723	14R PV 22659 56128	768'	A-10	BDU-50 CF/HD	300 - 450	3K - 10K	140 - 200	Dive	-30 thru -45
						BDU-56 HD	300 - 450	3K - 15K	140 - 200	Dive	-30 thru -45
					F-16	BDU-50 CF/HD	300 - 450	3K - 10K	140 - 200	Dive	-30 thru -45
						BDU-56 HD	300 - 450	3K - 15K	140 - 200	Dive	-30 thru -45

