

FINAL REPORT OF THE  
WESTWARD FLEET COOPERATIVE  
YEAR 2008

PREPARED FOR:

NORTH PACIFIC FISHERY MANAGEMENT COUNCIL

JANUARY 29, 2009

PREPARED BY:

NATURAL RESOURCES CONSULTANTS, INC.  
SEATTLE, WASHINGTON

POINT OF CONTACT:

STEVE HUGHES (206) 285-3480

**FINAL REPORT OF THE  
WESTWARD FLEET COOPERATIVE  
YEAR 2008**

**Presented to the  
North Pacific Fishery Management Council  
JANUARY 29, 2009**

## TABLE OF CONTENTS

	Page
INTRODUCTION .....	1
WESTWARD FLEET MEMBER VESSELS AND CO-OP MANAGEMENT .....	1
WFC BERING SEA POLLOCK ALLOCATION, TRANSFERS AND CATCH .....	3
OUTSIDE WESTWARD PROCESSOR DELIVERIES .....	4
BYCATCH IN THE BERING SEA POLLOCK FISHERY.....	4
SIDEBOARD LIMITATIONS, ALLOCATIONS AND CATCHES .....	5
DIRECTED BERING SEA COD AND GULF POLLOCK FISHERY .....	5
CATCHES BY GULF SIDEBOARD EXEMPT MEMBER VESSELS .....	6
WFC PROHIBITED SPECIES CATCH TOTALS .....	6
WFC MONITORING AND ENFORCEMENT .....	6
EXHIBITS.....	7-17
ATTACHMENT 1	
ATTACHMENT 2	

## LIST OF EXHIBITS

	<b>Page</b>
Exhibit 1. Schematic of Westward Fleet Cooperative operations, 2008. ....	7
Exhibit 2. Percent distribution of 2008 Bering Sea “inshore pollock allocation” between the seven inshore AFA pollock cooperatives. ....	8
Exhibit 3. Westward Fleet Cooperative member vessel initial pollock allocations expressed as a percentage of the co-op total, as a percentage of the Bering Sea inshore directed pollock fishery, and in metric tons for 2008.....	9
Exhibit 4. Westward Fleet Cooperative member vessel final Bering Sea directed pollock allocations for 2008 after within co-op transfers and trades. ....	10
Exhibit 5. Comparison of Westward Fleet Cooperative member vessels directed Bering Sea pollock catches with final allocations, 2008. ....	11
Exhibit 6. Directed pollock fishing catch and bycatch and PSC's for the Westward Fleet Cooperative member vessels, 2008. ....	12
Exhibit 7. Sideboard limits and aggregate catch of non-Bering Sea pollock by the Westward Fleet Cooperative member vessels, 2008. ....	13
Exhibit 8. Comparison of Westward Fleet Cooperative member vessels directed Bering Sea Pacific cod catches with final allocations, 2008. ....	14
Exhibit 9. Directed Pacific cod fishing catch and bycatch for the Westward Fleet Cooperative member vessels, 2008. ....	15
Exhibit 10. Transfers of Westward Fleet Cooperative Gulf of Alaska pollock sideboard limits to other catcher vessel co-ops, 2008. ....	16
Exhibit 11. Westward Fleet Cooperative vessel-by-vessel prohibited species catch, 2008. ....	17

**FINAL REPORT OF THE  
WESTWARD FLEET COOPERATIVE  
YEAR 2008**

**Presented to the  
North Pacific Fishery Management Council  
January 29, 2009**

**INTRODUCTION**

Westward Fleet Cooperative (WFC) is pleased to submit this document and results of their 2008 Bering Sea fishery to the North Pacific Fishery Management Council (NPFMC) in compliance with annual reporting requirements of the 1998 American Fisheries Act (AFA).

Year 2008 was the ninth year of WFC operations under the AFA. The Westward fleet was managed and operated during 2008 following the successful model established during the previous eight years fisheries—basically without change. This document format and 11 exhibits herein reporting WFC co-op members, management, allocations, catches, sideboard limits, prohibited species catches and enforcement is also consistent with WFC's earlier years reporting to the NPFMC. We believe this reporting format and detail is both in keeping with AFA reporting requirements and provides easy comparison to the prior year results.

**WESTWARD FLEET MEMBER VESSELS AND CO-OP MANAGEMENT**

Managing members representing 12 catcher vessels signed their eighth year co-op membership agreement on December 1, 2007, which enabled them to operate under the laws of the AFA in a fishery cooperative delivering pollock to Westward Seafood Inc., through the 2008 fishing season (Attachment 1 and 2) under terms of these agreements.

There was one change to the Agreement Addendum from the Addendum signed one year before; the Ocean Hope 3 changed ownership structure from U.S.

Marine Corp. to Ocean Hope 3 LLC and remained in WFC. With this change, the 2008 managing member owners and their respective vessels are listed below:

F. Gregory Baker, Managing Member

- Viking Limited Partnership F/V *Viking* 130 ft LOA
- Alaskan Command LLC, F/V *Alaskan Command* 185 ft LOA
- Westward Limited Partnership, F/V *Westward I* 127 ft LOA
- Pacific Knight LLC, F/V *Pacific Knight* 165 ft LOA
- Ocean Dynasty Limited Partnership, F/V *Chelsea K* 149 ft LOA

John and Robert Dooley, Managing Member

- Pacific Prince LLC, F/V *Pacific Prince* 148 ft LOA
- Caitlin Ann LLC, F/V *Caitlin Ann* 104 ft LOA

Donald Johnson, Managing Member, Hickory Wind LLC

- F/V *Hickory Wind* 104 ft LOA

Michael Faris, Managing Member, Ocean Hope 3 LLC

- F/V *Ocean Hope 3* 112 ft LOA

Dan Green, Managing Member, Wa'atch, Inc.

- F/V *Alyeska* 125 ft LOA

Bob Desautel, Managing Member, Dona Martita LLC

- F/V *Arctic Wind* 123 ft LOA
- F/V *Dona Martita* 165 ft LOA

Co-op management and administration continued during 2008 basically unchanged from management and administration of the eight prior co-op years (Exhibit 1). Mr. Robert Dooley continued to serve as the president of WFC. Mr. Steven Whitman and Mr. Tim Cusick served as the co-op coordinators. Coordination of information on allocations, transfers, pollock catches, sideboard

catches and prohibited species catches between the Westward plant in Dutch Harbor, the member vessels, Sea State, the Inter co-op Manager and the National Marine Fisheries Service all continued during 2008 as established in year 2000 and as conducted in 2001 through 2007.

#### WFC BERING SEA POLLOCK ALLOCATION, TRANSFERS AND CATCH

In 2008, the initial pollock allocation to WFC represented 18.906% of the AFA inshore-directed pollock allocation. WFC was the third largest tonnage co-op of the seven AFA inshore co-ops (Exhibit 2). WFC's 12 member vessels received AFA Bering Sea pollock allocations that totaled 82,098 mt. This co-op allocation was distributed among the 12 member vessels. Exhibit 3 provides details of the 12 vessel's initial pollock allocations. Individual vessel Bering Sea pollock allocations are expressed in tonnage, expressed as a percentage of the WFC total allocation and expressed as a percentage of the 2008 inshore directed pollock fishery.

Within the WFC, 10 of the 12 member vessels transferred pollock allocations among themselves. Three member vessels, *F/V Dona Martita*, *F/V Pacific Knight*, and *F/V Alyeska* transferred essentially all of their allocation to other member vessels and remained inactive in the Bering pollock fishery during 2008. Exhibit 4 identifies the transfers of Bering Sea pollock within the co-op by member vessel and the resulting final allocations to member vessels after transfers were completed. The final allocations shown in Exhibit 4 represented tonnages of Bering Sea pollock available to member vessels for harvesting during the 2008 fishing seasons.

Individual WFC member vessels directed Bering Sea pollock catches by the nine vessels that operated are provided in Exhibit 5 and are compared to their respective final pollock allocations. The WFC total directed Bering Sea pollock catch of their co-op's allocation totaled 81,092.897 mt. Of this total catch, 80,781.960 mt was delivered by WFC vessels and 310.938 mt was delivered by

a non-WFC vessel (Amendment 69 contract delivery). WFC total pollock deliveries were 98.8% of WFC pollock allocation.

#### OUTSIDE WESTWARD PROCESSOR DELIVERIES

Member vessels delivered 99.94% of the WFC pollock catch to the co-op's affiliated processor--Westward Seafoods, Inc. Only one delivery of 111,052 lbs from the *Hickory Wind* was made to a different processor (Peter Pan), on July 17, 2008. Accordingly, WFC member vessels were in compliance with AFA Section (210)(b)(6), which provides that up to 10% of the pollock harvested within a co-op, can be delivered to processors other than the co-op's affiliated processor.

#### BYCATCH IN THE BERING SEA POLLOCK FISHERY

Bycatch of other groundfish, herring, halibut, crab and salmon from the directed Bering Sea pollock fishery is detailed by member vessel in Exhibit 6. Pollock represented 98.4% of the catch of pollock plus all other groundfish.

Further detail of salmon bycatch in the directed Bering Sea pollock fishery is reported for WFC in 2008 to meet additional reporting requirements under Amendment 84 (salmon bycatch ICA). Specifically, Exhibit 6 summarizes the seasonal (A and B) catches of Chinook and chum salmon (other salmon), and the number of appearances of each vessel on the "dirty 20" lists for both salmon species. To appear on the "dirty 20" list, a vessel must have exceeded the salmon bycatch base rate for that weekly period and have been among the top 20 vessels with the highest salmon bycatch rate for that weekly period.

We have been advised of a new reporting requirement for 2008 which deals with estimated numbers of salmon avoided by vessels as a result of vessels relocating fishing effort away from salmon savings areas. We understand that



this salmon savings analysis will be calculated by industry sector and presented in the Inter-coop Report rather than in each individual cooperative report.

Regarding the new compliance audit reporting requirement dealing with vessels violating the rolling hotspot closures for salmon bycatch, we are not aware of any WFC member violations, but we have been advised that the required third party audit of vessel VMS data is not concluded. That report from the separate third party audit will be provided to the NPFMC when it is available.

#### SIDEBOARD LIMITATIONS, ALLOCATIONS AND CATCHES

Initial sideboard limits for the WFC vessels totaled 6,137.114 mt. Of this total, 665.393 mt of sideboard species allocations were transferred from WFC to other co-ops, 1,812.152 mt of sideboard species allocations were harvested by WFC member vessels and 3,659.569 mt of sideboard species allocations remained unused (Exhibit 7).

No individual species/area sideboard allocation was exceeded. WFC member vessels did not conduct fisheries for pollock or for other species of groundfish in the Gulf of Alaska management region.

#### DIRECTED BERING SEA COD AND GULF POLLOCK FISHERY

WFC's directed Bering Sea Pacific cod allocations, transfers and catches for 2008 are presented in Exhibit 8 by member vessel. Member vessel directed Bering Sea Pacific cod allocations totaled 2,136.98 mt of which 498.39 mt were transferred by inter co-op agreements to other co-ops and 843.04 mt were harvested by WFC co-op vessels. Only two member vessels participated in the WFC directed Bering Sea Pacific cod harvest. A total of 795.54 mt of the final WFC cod allocation remained unharvested.

Bycatch of other groundfish, halibut, herring, crab and salmon in the WFC directed Bering Sea cod fishery is detailed in Exhibit 9. Cod comprised 66.9% of the cod plus other groundfish catch in WFC's directed Bering Sea cod fishery.

As earlier noted in Exhibit 7, WFC's sideboard Gulf of Alaska allocations totaled 2,298 mt of Area 610 pollock, 233 mt of Area 620 pollock, 114 mt of Area 630 pollock and 137 mt of Area 640 pollock. All areas Gulf of Alaska pollock allocation for WFC vessels totaled 2,782 mt. Of this total, 167 mt was transferred to other co-ops as reported in Exhibit 10. WFC member vessels did not fish Gulf of Alaska pollock in 2008 leaving 2,615 mt of Gulf of Alaska pollock un-harvested and un-transferred to other co-ops.

#### CATCHES BY GULF SIDEBOARD EXEMPT MEMBER VESSELS

Two WFC member vessels (*Hickory Wind* and *Ocean Hope 3*) are Gulf of Alaska sideboard exempt. Both vessels operated within co-op guidelines and did not lease any of their Bering Sea pollock or cod.

#### WFC PROHIBITED SPECIES CATCH TOTALS

WFC member vessel prohibited species catch totals for halibut, herring, Bristol Bay red king crab, *bairdi* Tanner crab, other Tanner crab, Chinook salmon and other salmon are provided in Exhibit 11.

#### WFC MONITORING AND ENFORCEMENT

All WFC directed Bering Sea pollock and cod catches, as well as sideboard catches and the halibut PSC were successfully managed and did not exceed allocations. The co-op was accordingly not required to take any enforcement actions.

Exhibit 1. Schematic of Westward Fleet Cooperative operations, 2008.

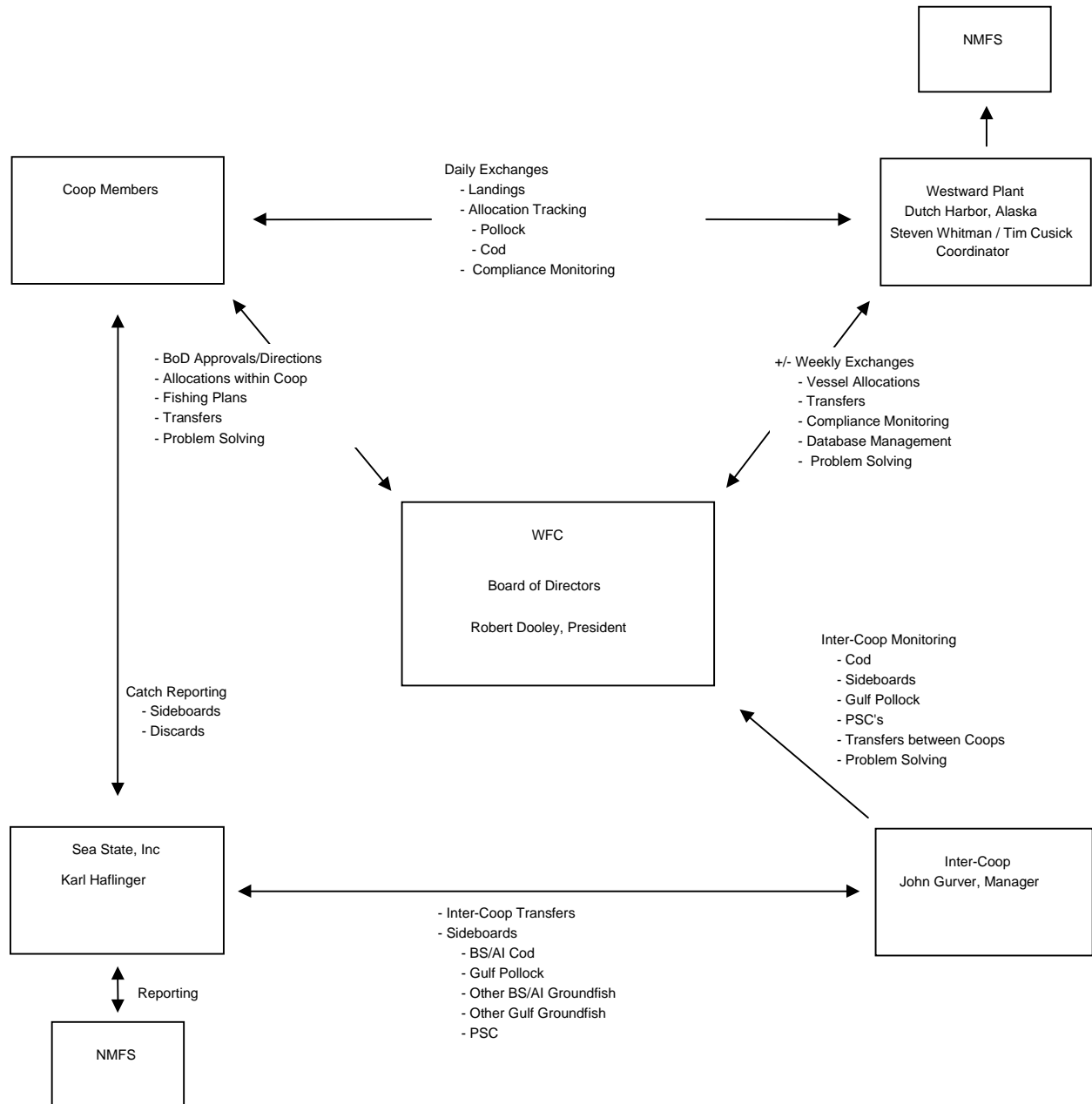


Exhibit 2. Percent distribution of 2008 Bering Sea "inshore pollock allocation" between the seven inshore AFA pollock cooperatives.

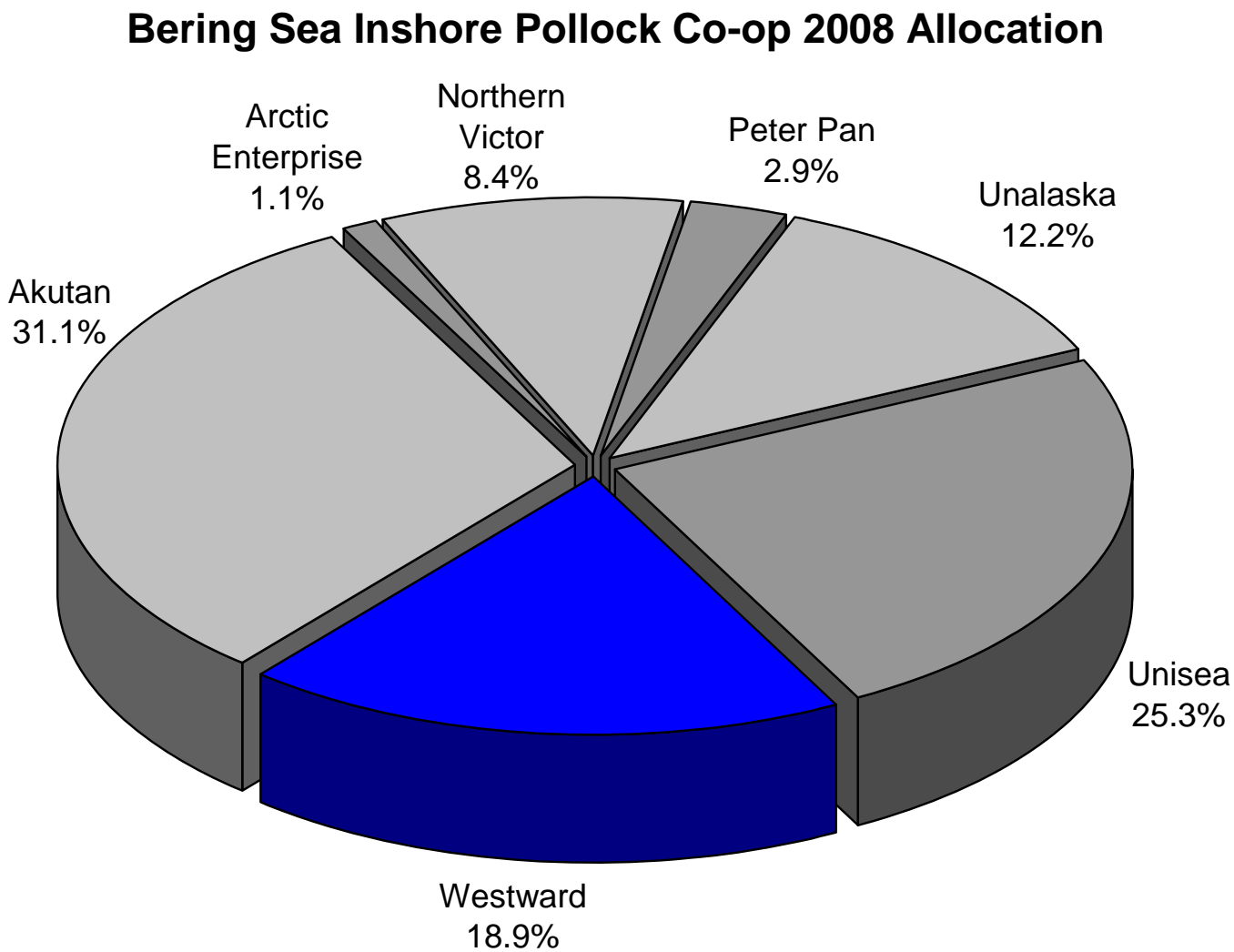


Exhibit 3. Westward Fleet Cooperative member vessel initial pollock allocations expressed as a percentage of the co-op total, as a percentage of the Bering Sea inshore directed pollock fishery, and in metric tons for 2008.

Company Name	Member Vessels	% of Co-op Allocation	% of AFA Inshore Directed Pollock Fishery	Year 2007 Allocation (MT)
Alaskan Command LLC	Alaskan Command	1.960%	0.371%	1,609.296
Wa'atch, Inc.	Alyeska	6.378%	1.206%	5,236.418
Dona Martita LLC	Arctic Wind	5.829%	1.102%	4,785.831
Caitlin Ann LLC	Caitlin Ann	5.050%	0.955%	4,145.871
Ocean Dynasty Limited Partnership	Chelsea K	24.546%	4.641%	20,151.994
Dona Martita LLC	Dona Martita	11.105%	2.100%	9,117.219
Hickory Wind LLC	Hickory Wind	1.517%	0.287%	1,245.564
Ocean Hope 3 LLC	Ocean Hope 3	2.571%	0.486%	2,110.918
Pacific Knight LLC	Pacific Knight	11.520%	2.178%	9,457.623
Pacific Prince LLC	Pacific Prince	12.557%	2.374%	10,309.021
Viking Limited Partnership	Viking	8.753%	1.655%	7,185.853
Westward Limited Partnership	Westward 1	8.213%	1.553%	6,742.392
Cooperative Total		100.000%	18.906%	82,098.000 *

\* Some totals are rounded. Vessel percentages are as published in cooperative harvest schedule and final allocations are derived using harvest schedule percentages and the final cooperative pollock allocation posted in 73 FR 10165, February 26, 2008.

Exhibit 4. Westward Fleet Cooperative member vessel final Bering Sea directed pollock allocations for 2008 after within co-op transfers and trades.

Company Name	Member Vessels	Year 2007 Allocation (MT)	Within Co-op Net Transfer In (+) MT & Out (-) MT	Within Co-op Trades In (+) MT & Out (-) MT	Final Pollock Allocation (MT)
Alaskan Command LLC	Alaskan Command	1,609.296	+14,200.717	0.000	15,810.014
Wa'atch, Inc.	Alyeska	5,236.418	-5,236.418	0.000	0.000
Dona Martita LLC	Arctic Wind	4,785.831	+3,125.486	0.000	7,911.317
Caitlin Ann LLC	Caitlin Ann	4,145.871	-1,235.750	0.000	2,910.121
Ocean Dynasty Limited Partnership	Chelsea K	20,151.994	+2,425.350	0.000	22,577.345
Dona Martita LLC	Dona Martita	9,117.219	-9,117.219	0.000	0.000
Hickory Wind LLC	Hickory Wind	1,245.564	0.000	0.000	1,245.564
Ocean Hope 3 LLC	Ocean Hope 3	2,110.918	0.000	0.000	2,110.918
Pacific Knight LLC	Pacific Knight	9,457.623	-9,457.622	0.000	0.000
Pacific Prince LLC	Pacific Prince	10,309.021	+1,698.310	0.000	12,007.330
Viking Limited Partnership	Viking	7,185.853	+2,029.155	0.000	9,215.008
Westward Limited Partnership	Westward 1	6,742.392	+1,567.991	0.000	8,310.383
Cooperative Total		82,098.000	0.000	0.000	82,098.000 *

\* Some totals are rounded.

Exhibit 5. Comparison of Westward Fleet Cooperative member vessels directed Bering Sea pollock catches with final allocations, 2008.

Company Name	Member Vessels	Final Pollock Allocation (MT)	Directed Bering Sea Pollock Catch by Vessel (MT)	Difference Over (+) Under (-)
Alaskan Command LLC	Alaskan Command	15,810.014	14,912.907	-897.107
Wa'atch, Inc.	Alyeska	0.000	0.000	0.000
Dona Martita LLC	Arctic Wind	7,911.317	7,972.805	61.488
Caitlin Ann LLC	Caitlin Ann	2,910.121	4,368.324	+1,458.203
Ocean Dynasty Limited Partnership	Chelsea K	22,577.345	22,670.991	+93.646
Dona Martita LLC	Dona Martita	0.000	0.000	0.000
Hickory Wind LLC	Hickory Wind	1,245.564	1,242.965	-2.599
Ocean Hope 3 LLC	Ocean Hope 3	2,110.918	1,328.527	-782.391
Pacific Knight LLC	Pacific Knight	0.000	0.000	0.000
Pacific Prince LLC	Pacific Prince	12,007.330	10,553.853	-1,453.478
Viking Limited Partnership	Viking	9,215.008	9,924.331	+709.322
Westward Limited Partnership	Westward 1	8,310.383	8,118.196	-192.187
Cooperative Total		82,098.000	81,092.897 *	-1,005.103

\* Directed catch includes Amendment 69 contractual fishing amounts as reported by the Co-op for one vessel - the Arctic Wind at 310.938 mt.

Exhibit 6. Directed pollock fishing catch and bycatch and PSC's for the Westward Fleet Cooperative member vessels, 2008.

Company Name	Member Vessels	Directed Bering Sea Pollock Catch by Vessel (MT)	Other Groundfish (MT)	Herring (MT)	Halibut Mortality (MT)	Red King Crab (#)	Bairdi Tanner Crab (#)	Other Tanner Crab (#)	A Season*		B Season*					
									Chinook Salmon # (D2)	Other Salmon # (D2)	Chinook Salmon # (D2)	Other Salmon # (D2)				
Alaskan Command LLC	Alaskan Command	14,912.907	189.769	1	2	0	1	7	380	(3)	14	(0)	52	(1)	141	(2)
Wa'atch, Inc.	Alyeska	0.000	0.000	0	0	0	0	0	0	(0)	0	(0)	0	(0)	0	(0)
Dona Martita LLC	Arctic Wind	7,972.805	232.601	0	1	0	6	122	130	(2)	2	(0)	4	(1)	22	(1)
Caitlin Ann LLC	Caitlin Ann	4,368.324	55.909	0	0	0	1	25	0	(0)	0	(0)	18	(1)	65	(1)
Ocean Dynasty Limited Partnership	Chelsea K	22,670.991	302.213	1	3	0	12	45	379	(2)	0	(0)	32	(0)	168	(2)
Dona Martita LLC	Dona Martita	0.000	0.000	0	0	0	0	0	0	(0)	0	(0)	0	(0)	0	(0)
Hickory Wind LLC	Hickory Wind	1,242.965	4.909	0	0	0	2	0	0	(0)	0	(0)	1	(0)	120	(4)
Ocean Hope 3 LLC	Ocean Hope 3	1,328.527	12.276	0	0	0	0	0	13	(2)	1	(0)	3	(0)	138	(3)
Pacific Knight LLC	Pacific Knight	0.000	0.000	0	0	0	0	0	0	(0)	0	(0)	0	(0)	0	(0)
Pacific Prince LLC	Pacific Prince	10,553.853	199.026	0	2	0	0	39	213	(1)	0	(0)	5	(0)	22	(1)
Viking Limited Partnership	Viking	9,924.331	151.241	0	2	0	0	3	170	(1)	2	(0)	9	(0)	24	(0)
Westward Limited Partnership	Westward 1	8,118.196	203.862	0	1	0	11	98	133	(2)	0	(0)	1	(0)	26	(0)
Cooperative Total		81,092.897	1,351.806	4	13	0	33	339	1,418		19		125		726	

Directed pollock catch totals are from Westward. All other PSCs and Other Groundfish are from Seastate.  
\* Reporting requirements for 2008 showing season split of chinook and other salmon PSC catches and the number of appearances on the weekly "Dirty 20" (D2) bycatch lists for chinook and other salmon by season.



Exhibit 7. Sideboard limits and aggregate catch of non-Bering Sea pollock by the Westward Fleet Cooperative member vessels, 2008.

Species/Area	Initial Westward Sideboard Limit (MT)	InterCoop Sideboard Transfer (MT)	Final Sideboard Limit (MT)	Coop Catch (MT)	Difference Over "+" (MT) Under "-" (MT)
BSAI Pacific Cod	2,137.000	498.393	1,638.607	1,542.483	-96.124
BSAI Yellowfin Sole*	NA	NA	NA	NA	NA
BSAI Rock Sole	862.000	0.000	862.000	269.670	-592.330
BSAI Flathead Sole**	NA	NA	NA	NA	NA
Western GOA Pacific Cod "A" Season	118.474	0.000	118.474	0.000	-118.474
Central GOA Pacific Cod "A" Season	95.177	0.000	95.177	0.000	-95.177
Western GOA Pacific Cod "B" Season	78.983	0.000	78.983	0.000	-78.983
Central GOA Pacific Cod "B" Season	63.480	0.000	63.480	0.000	-63.480
Area 610 "A" season Pollock	434.000	0.000	434.000	0.000	-434.000
Area 620 "A" season Pollock	75.000	75.000	0.000	0.000	0.000
Area 630 "A" season Pollock	26.000	0.000	26.000	0.000	-26.000
Shelikof "A" season Pollock	0.000	0.000	0.000	0.000	0.000
Area 610 "B" season Pollock	434.000	0.000	434.000	0.000	-434.000
Area 620 "B" season Pollock	92.000	92.000	0.000	0.000	0.000
Area 630 "B" season Pollock	14.000	0.000	14.000	0.000	-14.000
Shelikof "B" season Pollock	0.000	0.000	0.000	0.000	0.000
Area 610 "C" season Pollock	715.000	0.000	715.000	0.000	-715.000
Area 620 "C" season Pollock	33.000	0.000	33.000	0.000	-33.000
Area 630 "C" season Pollock	37.000	0.000	37.000	0.000	-37.000
Area 610 "D" season Pollock	715.000	0.000	715.000	0.000	-715.000
Area 620 "D" season Pollock	33.000	0.000	33.000	0.000	-33.000
Area 630 "D" season Pollock	37.000	0.000	37.000	0.000	-37.000
Eastern GOA Pollock 640	137.000	0.000	137.000	0.000	-137.000
WGOA shallow-water flatfish	0.000	0.000	0.000	0.000	0.000
CGOA shallow-water flatfish	0.000	0.000	0.000	0.000	0.000
EGOA shallow-water flatfish	0.000	0.000	0.000	0.000	0.000
CGOA deep-water flatfish	0.000	0.000	0.000	0.000	0.000
CGOA Northern Rockfish	0.000	0.000	0.000	0.000	0.000
CGOA Pacific Ocean Perch	0.000	0.000	0.000	0.000	0.000
EGOA Pacific Ocean Perch	0.000	0.000	0.000	0.000	0.000

Coop All Species Sideboard Total 6,137.114 665.393 5,471.721 1,812.152 -3,659.569

PSC limited halibut for Bering Sea  
 Directed Pacific Cod fishery → 37.000

Note - total catch above includes directed fishing (if any) plus incidental landings.

\* BSAI yellowfin sole had no sideboard limit in 2008 - the WFC catch of 26.45 mt of yellowfin sole is not included in the above table.

\*\* BSAI flathead sole is a sideboard species in 2008. Sideboard limit amount was not available, WFC catch of 431.43 is reported from Seastate and is not included in the table above.

Exhibit 8. Comparison of Westward Fleet Cooperative member vessels directed Bering Sea Pacific cod catches with final allocations, 2008.

Company Name	Member Vessels	Initial Coop Cod Allocation (MT) For Year 2008	Within Coop Net Transfer In (+) & Out (-)	InterCoop Transfers (MT) In (+), Out (-)	Westward Coop Final Adjusted Cod Allocation (MT)	Directed Bering Sea Cod Catch by Vessel (MT)	Difference Over (+) Under (-)
Alaskan Command LLC	Alaskan Command	0.00	0.00	0.00	0.00	0.00	0.00
Wa'atch, Inc.	Alyeska	0.00	0.00	0.00	0.00	0.00	0.00
Dona Martita LLC	Arctic Wind	333.82	+123.71	-240.41	217.11	72.34	-144.77
Caitlin Ann LLC	Caitlin Ann	341.10	+900.31	0.00	1,241.41	770.70	-470.71
Ocean Dynasty Limited Partnership	Chelsea K	61.12	-57.50	-3.61	0.00	0.00	0.00
Dona Martita LLC	Dona Martita	296.96	0.00	-213.87	83.10	0.00	-83.10
Hickory Wind LLC	Hickory Wind	96.96	0.00	0.00	96.96	0.00	-96.96
Ocean Hope 3 LLC	Ocean Hope 3	0.00	0.00	0.00	0.00	0.00	0.00
Pacific Knight LLC	Pacific Knight	131.44	-123.71	-7.74	0.00	0.00	0.00
Pacific Prince LLC	Pacific Prince	316.68	-316.68	0.00	0.00	0.00	0.00
Viking Limited Partnership	Viking	288.76	-271.82	-16.93	0.00	0.00	0.00
Westward Limited Partnership	Westward 1	270.14	-254.30	-15.84	0.00	0.00	0.00
Coop Total		2,136.98	0.00	-498.39	1,638.58	843.04	-795.54

Exhibit 9. Directed Pacific cod fishing catch and bycatch for the Westward Fleet Cooperative member vessels, 2008.

Company Name	Member Vessels	Directed Bering Sea Cod Catch by Vessel (MT)	Other Groundfish Catch (MT)	Halibut Mortality (MT)	Herring Catch (MT)	Red King Catch (#)	<i>Bairdi</i> Tanner Catch (#)	Other Tanner Catch (#)	Chinook Salmon (#)	Other Salmon (#)
Alaskan Command LLC	Alaskan Command	0.000	0.000	0	0	0	0	0	0	0
Wa'atch, Inc.	Alyeska	0.000	0.000	0	0	0	0	0	0	0
Dona Martita LLC	Arctic Wind	72.343	113.000	5	0	0	503	40	0	0
Caitlin Ann LLC	Caitlin Ann	770.699	304.346	17	0	70	1,679	878	0	2
Ocean Dynasty Limited Partnership	Chelsea K	0.000	0.000	0	0	0	0	0	0	0
Dona Martita LLC	Dona Martita	0.000	0.000	0	0	0	0	0	0	0
Hickory Wind LLC	Hickory Wind	0.000	0.000	0	0	0	0	0	0	0
Ocean Hope 3 LLC	Ocean Hope 3	0.000	0.000	0	0	0	0	0	0	0
Pacific Knight LLC	Pacific Knight	0.000	0.000	0	0	0	0	0	0	0
Pacific Prince LLC	Pacific Prince	0.000	0.000	0	0	0	0	0	0	0
Viking Limited Partnership	Viking	0.000	0.000	0	0	0	0	0	0	0
Westward Limited Partnership	Westward 1	0.000	0.000	0	0	0	0	0	0	0
<b>Coop Total</b>		<b>843.043</b>	<b>417.346</b>	<b>21</b>	<b>0</b>	<b>70</b>	<b>2,182</b>	<b>918</b>	<b>0</b>	<b>2</b>

Pacific cod catch totals are from Westward. All other PSCs and Other Groundfish are from Seastate.

Exhibit 10. Transfers of Westward Fleet Cooperative Gulf of Alaska pollock sideboard limits to other catcher vessel co-ops, 2008.

Gulf Area/Season	Transfers To	Transfer Amount (MT)
620 A	Unalaska Coop	75.000
620 B	Unalaska Coop	92.000
Total GOA Transfers		167.000

Exhibit 11. Westward Fleet Cooperative vessel-by-vessel prohibited species catch, 2008.

Company Name	Member Vessels	Total Halibut Mortality (MT)	Total Herring Catch (MT)	Total Red King Crab (#)	Total Bairdi Tanner Crab (#)	Total Other Tanner Crab (#)	Total Chinook Salmon (#)	Total Other Salmon (#)
Alaskan Command LLC	Alaskan Command	2	1	0	1	7	380	141
Wa'atch, Inc.	Alyeska	0	0	0	0	0	0	0
Dona Martita LLC	Arctic Wind	6	0	0	509	162	130	22
Caitlin Ann LLC	Caitlin Ann	17	0	70	1,680	903	0	67
Ocean Dynasty Limited Partnership	Chelsea K	3	1	0	12	45	379	168
Dona Martita LLC	Dona Martita	0	0	0	0	0	0	0
Hickory Wind LLC	Hickory Wind	0	0	0	2	0	0	120
U.S. Marine Corporation	Ocean Hope 3	0	0	0	0	0	13	138
Pacific Knight LLC	Pacific Knight	0	0	0	0	0	0	0
Pacific Prince LLC	Pacific Prince	2	0	0	0	39	213	22
Viking Limited Partnership	Viking	2	0	0	0	3	170	24
Westward Limited Partnership	Westward 1	1	0	0	11	98	133	26
<b>Coop Total</b>		<b>35</b>	<b>4</b>	<b>70</b>	<b>2,215</b>	<b>1,257</b>	<b>1,418</b>	<b>728</b>

## ATTACHMENT 1

WFC MEMBERSHIP AGREEMENT 2008 ADDENDUM

WESTWARD FLEET COOPERATIVE

MEMBERSHIP AGREEMENT


2008 ADDENDUM

Each of the undersigned hereby acknowledges and agrees that the terms and conditions of the Westward Fleet Cooperative Membership Agreement dated as of December 23, 1999, as amended by that First Amendment to Membership Agreement dated as of January 15, 2004, and that Membership Agreement Addendum dated as of January 12, 2006 shall be in full force and effect among the undersigned for the year 2008, and that Exhibit A attached hereto supersedes Exhibit A to the Membership Agreement and to all prior amendments and addenda thereto.

In addition, each of the undersigned hereby certifies that the vessel on behalf of which it is executing this Addendum: (i) delivered more pollock to Westward Seafoods, Inc. than to any other AFA inshore processor in the last year in which the vessel engaged in directed fishing for pollock in the BSAI for delivery to the inshore sector; (ii) is a qualified catcher vessel; (iii) is otherwise eligible to fish for groundfish in the BSAI; (iv) has an AFA catcher vessel permit with an inshore endorsement; and (v) has no permit sanctions or other type of sanctions against it that would prevent it from fishing for groundfish in the BSAI.

Dated effective as of December 1, 2007.

F/V ALASKAN COMMAND  
Alaskan Command L.L.C.

By:   
Its: ENGINEERING MANAGER

F/V ALYESKA  
Wa'atch, Inc.

By:   
Its: POA

F/V ARCTIC WIND  
Dona Martita LLC

By: \_\_\_\_\_  
Its: \_\_\_\_\_

F/V CAITLIN ANN  
Caitlin Ann, LLC

By: \_\_\_\_\_  
Its: \_\_\_\_\_

[SIGNATURES CONTINUED ON PAGE 2]

WESTWARD FLEET COOPERATIVE

MEMBERSHIP AGREEMENT

2008 ADDENDUM

Each of the undersigned hereby acknowledges and agrees that the terms and conditions of the Westward Fleet Cooperative Membership Agreement dated as of December 23, 1999, as amended by that First Amendment to Membership Agreement dated as of January 15, 2004, and that Membership Agreement Addendum dated as of January 12, 2006 shall be in full force and effect among the undersigned for the year 2008, and that Exhibit A attached hereto supersedes Exhibit A to the Membership Agreement and to all prior amendments and addenda thereto.

In addition, each of the undersigned hereby certifies that the vessel on behalf of which it is executing this Addendum: (i) delivered more pollock to Westward Seafoods, Inc. than to any other AFA inshore processor in the last year in which the vessel engaged in directed fishing for pollock in the BSAI for delivery to the inshore sector; (ii) is a qualified catcher vessel; (iii) is otherwise eligible to fish for groundfish in the BSAI; (iv) has an AFA catcher vessel permit with an inshore endorsement; and (v) has no permit sanctions or other type of sanctions against it that would prevent it from fishing for groundfish in the BSAI.

Dated effective as of December 1, 2007.

F/V ALASKAN COMMAND  
Alaskan Command LLC

By: [Signature]  
Its: Executive Director

F/V ALYESKA  
Wa'atch, Inc.

By: [Signature]  
Its: POA

F/V ARCTIC WIND  
Dora Martita LLC

By: [Signature]  
Its: Mgt

F/V CAITLIN ANN  
Caitlin Ann, LLC

By: \_\_\_\_\_  
Its: \_\_\_\_\_

[SIGNATURES CONTINUED ON PAGE 2]



WESTWARD FLEET COOPERATIVE

MEMBERSHIP AGREEMENT

2008 ADDENDUM

Each of the undersigned hereby acknowledges and agrees that the terms and conditions of the Westward Fleet Cooperative Membership Agreement dated as of December 23, 1999, as amended by that First Amendment to Membership Agreement dated as of January 15, 2004, and that Membership Agreement Addendum dated as of January 12, 2006 shall be in full force and effect among the undersigned for the year 2008, and that Exhibit A attached hereto supersedes Exhibit A to the Membership Agreement and to all prior amendments and addenda thereto.

In addition, each of the undersigned hereby certifies that the vessel on behalf of which it is executing this Addendum: (i) delivered more pollock to Westward Seafoods, Inc. than to any other AFA inshore processor in the last year in which the vessel engaged in directed fishing for pollock in the BSAI for delivery to the inshore sector; (ii) is a qualified catcher vessel; (iii) is otherwise eligible to fish for groundfish in the BSAI; (iv) has an AFA catcher vessel permit with an inshore endorsement; and (v) has no permit sanctions or other type of sanctions against it that would prevent it from fishing for groundfish in the BSAI.

Dated effective as of December 1, 2007.

F/V ALASKAN COMMAND  
Alaskan Command L.L.C.

By: [Signature]  
Its: Alaskan Command L.L.C.

F/V ALYESKA  
Wa'atch, Inc.

By: [Signature]  
Its: Wa'atch, Inc.

F/V ARCTIC WIND  
Dona Martita LLC

By: \_\_\_\_\_  
Its: \_\_\_\_\_

F/V CAITLIN ANN  
Caitlin Ann, LLC

By: [Signature]  
Its: member

[SIGNATURES CONTINUED ON PAGE 2]

F/V CHELSEA K  
Ocean Dynasty Limited Partnership

By: [Signature]  
Its: ENGINEERING MANAGER

F/V DONA MARTITA  
Dona Martita LLC

By: \_\_\_\_\_  
Its: \_\_\_\_\_

F/V HICKORY WIND  
Hickory Wind, LLC

By: \_\_\_\_\_  
Its: \_\_\_\_\_

F/V OCEAN HOPE 3  
U.S. Marine Corp.

By: \_\_\_\_\_  
Its: \_\_\_\_\_

F/V PACIFIC KNIGHT  
Pacific Knight LLC

By: [Signature]  
Its: ENGINEERING MANAGER

F/V PACIFIC PRINCE  
Pacific Prince, LLC

By: \_\_\_\_\_  
Its: \_\_\_\_\_

F/V VIKING  
Viking Limited Partnership

By: [Signature]  
Its: ENGINEERING MANAGER

F/V WESTWARD 1  
Westward Limited Partnership

By: [Signature]  
Its: ENGINEERING MANAGER

WESTWARD FLEET COOPERATIVE

By: \_\_\_\_\_  
Its: \_\_\_\_\_

F/V CHELSEA K  
Ocean Dynasty Limited Partnership

By: [Signature]  
Its: General Partner

F/V DONA MARTITA  
Dona Martita LLC

By: [Signature]  
Its: myb

F/V HICKORY WIND  
Hickory Wind, LLC

By: \_\_\_\_\_  
Its: \_\_\_\_\_

F/V OCEAN HOPE 3  
U.S. Marine Corp.

By: \_\_\_\_\_  
Its: \_\_\_\_\_

F/V PACIFIC KNIGHT  
Pacific Knight LLC

By: [Signature]  
Its: General Partner

F/V PACIFIC PRINCE  
Pacific Prince, LLC

By: \_\_\_\_\_  
Its: \_\_\_\_\_

F/V VIKING  
Viking Limited Partnership

By: [Signature]  
Its: General Partner

F/V WESTWARD 1  
Westward Limited Partnership

By: [Signature]  
Its: General Partner

WESTWARD FLEET COOPERATIVE

By: \_\_\_\_\_  
Its: \_\_\_\_\_

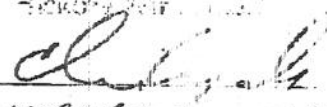
F/V OMBELDUK  
Ocean Dynasty Limited Partnership

By: \_\_\_\_\_  
Its: \_\_\_\_\_

F/V DONA MARTHA  
Jona Martha LLC

By: \_\_\_\_\_  
Its: \_\_\_\_\_

F/V HICKORY WIND  
Hickory Wind LLC

By:   
Its: \_\_\_\_\_

F/V OCEAN HOPE 3  
O.S. Marine Corp.

By: \_\_\_\_\_  
Its: \_\_\_\_\_

F/V PACIFIC WIND  
Pacific Wind LLC

By: \_\_\_\_\_  
Its: \_\_\_\_\_

F/V PACIFIC PRINCE  
Pacific Prince, LLC

By: \_\_\_\_\_  
Its: \_\_\_\_\_

F/V VIKING  
Viking Limited Partnership

By: \_\_\_\_\_  
Its: \_\_\_\_\_

F/V WESTWARD 1  
Westward Limited Partnership

By: \_\_\_\_\_  
Its: \_\_\_\_\_

WESTWARD FLEET COOPERATIVE

By: \_\_\_\_\_  
Its: \_\_\_\_\_

FROM : Ocean Peace, Inc.

FAX NO. : 206 282 6103

Nov. 15 2007 02:54PM P3

F/V CHELSEA K  
Ocean Dynasty Limited Partnership

By: [Signature]  
Its: ENGINEERING MANAGER

F/V DONA MARTITA  
Dona Martita LLC

By: \_\_\_\_\_  
Its: \_\_\_\_\_

F/V HICKORY WIND  
Hickory Wind, LLC

By: \_\_\_\_\_  
Its: \_\_\_\_\_

F/V OCEAN HOPE 3  
U.S. Marine Corp.

By: [Signature]  
Its: EVP

F/V PACIFIC KNIGHT  
Pacific Knight LLC

By: [Signature]  
Its: ENGINEERING MANAGER

F/V PACIFIC PRINCE  
Pacific Prince, LLC

By: \_\_\_\_\_  
Its: \_\_\_\_\_

F/V VIKING  
Viking Limited Partnership

By: [Signature]  
Its: ENGINEERING MANAGER

F/V WESTWARD 1  
Westward Limited Partnership

By: [Signature]  
Its: ENGINEERING MANAGER

WESTWARD FLEET COOPERATIVE

By: \_\_\_\_\_  
Its: \_\_\_\_\_

F/V CHELSEA K  
Ocean Dynasty Limited Partnership

By: [Signature]  
Its: General Manager

F/V DONA MARTITA  
Dona Martita LLC

By: \_\_\_\_\_  
Its: \_\_\_\_\_

F/V HICKORY WIND  
Hickory Wind, LLC

By: \_\_\_\_\_  
Its: \_\_\_\_\_

F/V OCEAN HOPE 3  
U.S. Marine Corp.

By: \_\_\_\_\_  
Its: \_\_\_\_\_

F/V PACIFIC KNIGHT  
Pacific Knight LLC

By: [Signature]  
Its: General Manager

F/V PACIFIC PRINCE  
Pacific Prince, LLC

By: [Signature]  
Its: member

F/V VIKING  
Viking Limited Partnership

By: [Signature]  
Its: General Manager

F/V WESTWARD 1  
Westward Limited Partnership

By: [Signature]  
Its: General Manager

WESTWARD FLEET COOPERATIVE

By: [Signature]  
Its: president

WESTWARD FLEET COOPERATIVE  
EXHIBIT A TO 2008 ADDENDUM

BERING SEA/ ALEUTIAN ISLANDS POLLOCK FISHERY  
HARVEST SCHEDULE

<i>Member</i>	<i>Vessel</i>	<i>Percentage of Allocation</i>
Alaskan Command L.L.C.	ALASKAN COMMAND	1.960
Wa'atch, Inc.	ALYESKA	6.378
Dona Martita LLC	ARCTIC WIND	5.829
Caitlin Ann, LLC	CAITLIN ANN	5.050
Ocean Dynasty Limited Partnership	CHELSEA K	24.546
Dona Martita LLC	DONA MARTITA	11.105
Hickory Wind, LLC	HICKORY WIND	1.517
U.S. Marine Corp.	OCEAN HOPE 3	2.571
Pacific Knight LLC	PACIFIC KNIGHT	11.520
Pacific Prince, LLC	PACIFIC PRINCE	12.557
Viking Limited Partnership	VIKING	8.753
Westward Limited Partnership	WESTWARD 1	8.213
<b>TOTAL</b>		<b>100.00%</b>

## ATTACHMENT 2

AMENDMENT TO MEMBERSHIP AGREEMENT



**NOTICE OF ASSIGNMENT OF MEMBERSHIP INTEREST  
AND ADHEREANCE AGREEMENT**

THIS NOTICE OF TRANSFER OF MEMBERSHIP INTEREST AND ADHEREANCE AGREEMENT ("Agreement") is entered into as of this 23<sup>rd</sup> day of July 2008, by U.S. MARINE CORPORATION, a Delaware corporation ("U.S. Marine"), and OCEAN HOPE 3 LLC, a Washington limited liability company ("Ocean Hope") with respect to the following:

A. On the basis of ownership of the vessel OCEAN HOPE 3, Official No. 652397 (the "Vessel"), U.S. Marine has been a member of the Westward Fleet Cooperative (the "Cooperative").

B. Pursuant to that certain U.S. Coast Guard Bill of Sale dated July 23, 2008, and that certain Bill of Sale and Assignment of Fishing Rights of even date therewith, U.S. Marine transferred the Vessel and associated fishing rights to Ocean Hope.

C. By this Agreement, Ocean Hope provides notice of its ownership of the Vessel and associated fishing rights, and assumes U.S. Marine's obligations under that certain Westward Fleet Cooperative Membership Agreement dated as of December 23, 1999 (as amended or restated from time to time, the "Membership Agreement").

NOW, THEREFORE, for good and valuable consideration, the sufficiency and receipt of which is hereby acknowledged, the parties agree as follows:

1. Ocean Hope hereby provides notice to the Cooperative that ownership of the Vessel and associated fishing rights, including the right to participate in the Cooperative, has been transferred to Ocean Hope.

2. In accordance with Section 6 of the Membership Agreement, Ocean Hope hereby assumes all rights and obligations of U.S. Marine under the Membership Agreement. It is Ocean Hope's intent that execution of this Agreement be deemed for all purposes to have the same legal effect as direct execution of the Membership Agreement by Ocean Hope and all existing members of the Cooperative.

EXECUTED as of the day and year first set forth above.

U.S. MARINE CORPORATION

OCEAN HOPE 3 LLC

By: 

By: 

Name: R. Michael Runyon

Name: Michael J. Faris

Title: President

Title: Manager