

**PRELIMINARY REPORT OF THE
WESTWARD FLEET COOPERATIVE
YEAR 2001**

**Presented to the
North Pacific Fishery Management Council
January 30, 2002**

TABLE OF CONTENTS

	Page
INTRODUCTION.....	1
WESTWARD FLEET CO-OP MANAGEMENT.....	1
WFC BERING SEA POLLOCK ALLOCATION TRANSFERS AND CATCH	3
SIDEBOARD LIMITATIONS, ALLOCATIONS AND CATCHES.....	3
DIRECTED BERING SEA COD AND GULF POLLOCK FISHERY	4
DIRECTED CRAB FISHING.....	4
CATCHES BY GULF SIDEBOARD EXEMPT MEMBER VESSELS	4
WFC PROHIBITED SPECIES CATCH TOTALS, 2001.....	4
WFC MONITORING AND ENFORCEMENT	5
EXHIBITS 6-18	

LIST OF EXHIBITS

	Page
Exhibit 1.	Schematic of Westward Fleet Cooperative Operations, year 2001..... 6
Exhibit 2.	Westward Fleet Cooperative member vessel initial pollock allocations expressed as a percentage of the co- op total, as a percentage of the Bering Sea directed pollock fishery, and in metric tons for the year 2001..... 7
Exhibit 3.	Westward Fleet Cooperative member vessel final Bering Sea directed pollock allocations for the year 2001..... 8
Exhibit 4.	Comparison of Westward Fleet Cooperative member vessels directed Bering Sea pollock catches with final allocations, year 2001..... 9
Exhibit 5.	Directed pollock fishing catch and bycatch and PSC's for the Westward Fleet Cooperative member vessels, year 2001..... 10
Exhibit 6.	Sideboard limits and aggregate catch for the Westward Fleet Cooperative member vessels, year 2001..... 11
Exhibit 7.	Comparison of Westward Fleet Cooperative member vessels directed Bering Sea Pacific cod catches with final allocations, year 2001. 12
Exhibit 8.	Directed Pacific cod fishing catch and bycatch for the Westward Fleet Cooperative member vessels, year 2001..... 13
Exhibit 9.	Directed Gulf of Alaska Pollock fishing catch, bycatch and PSC's for the Westward Fleet Cooperative member vessels for Area 610, year 2001..... 14
Exhibit 10.	Transfers of Westward Fleet Cooperative Gulf of Alaska pollock sideboard limits to other catcher vessel co-ops, year 2001. 15
Exhibit 11.	Directed crab fishing landed catch by Westward Fleet Cooperative member vessels which were qualified to harvest Bering Sea crab..... 16

Exhibit 12. Directed Gulf of Alaska Pollock catches by Westward Fleet Cooperative member vessels qualified as Gulf of Alaska exempt vessels. 17

Exhibit 13. Westward Fleet Cooperative vessel-by-vessel prohibited species catch, year 2001..... 18

**PRELIMINARY REPORT OF THE
WESTWARD FLEET COOPERATIVE
YEAR 2001**

**Presented to the
North Pacific Fishery Management Council
January 30, 2002**

INTRODUCTION

Westward Fleet Cooperative (WFC) is pleased to submit this document and results of their 2001 Bering Sea fishery to the North Pacific Fishery Management Council (NPFMC) in compliance with annual reporting requirements of the 1998 American Fisheries Act (AFA).

Year 2001 was the second year of WFC operations under the AFA. The Westward fleet was managed and operated during 2001 following the successful model established during the 2000 fishery—basically without change. This document format and 13 exhibits herein reporting WFC co-op members, management, allocations, catches, sideboard limits, prohibited species catches and enforcement is also consistent with WFC's year 2000 reporting to the NPFMC. We believe this reporting format and detail is both in keeping with AFA reporting requirements and provides easy comparison to the prior year results.

WESTWARD FLEET MEMBER VESSELS AND CO-OP MANAGEMENT

Nine individual members representing 14 catcher vessels signed their second year's co-op membership agreement on December 1, 2000, which enabled them to operate under the laws of the AFA in a fishery cooperative delivering pollock to Westward Seafood Inc. during the 2001 fishing season.

WFC member owners and their vessels are listed below:

F. Gregory Baker, Managing Member

- F/V *Viking* 130 ft LOA
- F/V *Chelsea K* 149 ft LOA
- F/V *Westward 1* 127 ft LOA
- F/V *Alaskan Command* 185 ft LOA
- F/V *Pacific Knight* 165 ft LOA

John Dooley and Robert Dooley, Pacific Prince General Partnership

- F/V *Pacific Prince* 148 ft LOA

John Dooley and Robert Dooley

- F/V *Caitlin Ann* 104 ft LOA

Donald Johnson, Hickory Wind LLC

- F/V *Hickory Wind* 104 ft LOA

Neal Anderson, AJ LLC

- F/V *AJ* 138 ft LOA

Rick Mezich, Mezich Allegiance, Inc.

- F/V *Fierce Allegiance* 167 ft LOA

Matt Daugherty, U.S. Marine Corp.

- F/V *Ocean Hope 3* 112 ft LOA

Dan Green, Wa'atch, Inc.

- F/V *Alyeska* 125 ft LOA

Cary Swasand, Arctic Wind LLC

- F/V *Arctic Wind* 123 ft LOA

Chester Peterson, Chetna Inc.

- *F/V Pacific Challenger* 104 ft LOA

Co-op management and administration continued during 2001 basically unchanged from 2000 (Exhibit 1). Mr. Robert Dooley continued to serve as the president of Westward Fleet Cooperative and Mr. Steven Whitman continued to serve as the coordinator. Coordination of information on allocations, transfers, pollock catches, sideboard catches and prohibited species catches between the Westward plant in Dutch Harbor, the member vessels, Sea State, the Inter co-op Manager and the National Marine Fisheries Service all continued during 2001 as established the prior year.

WFC BERING SEA POLLOCK ALLOCATION TRANSFERS AND CATCH

WFC's 14 member vessels received an initial AFA Bering Sea pollock allocation of 111,286 mt (Exhibit 2) that was later adjusted upward to a final allocation of 112,385.553 mt. Directed Bering Sea pollock allocations for WFC relative to directed pollock catches by individual member vessel are detailed in Exhibits 3 and 4. Directed Bering Sea pollock catches totaled 111,818.401 mt or 567.152 mt less than the final allocation, which provided for 99.5% utilization. Bycatch of other groundfish, herring, halibut, crab and salmon from the directed Bering Sea pollock fishery are detailed by member vessel in Exhibit 5.

SIDEBOARD LIMITATIONS, ALLOCATIONS AND CATCHES

Sideboard limits for the WFC co-op vessels totaled 7,656.000 mt and were managed to a catch of 1,757.937 mt or 4,883.886 mt below allocation (Exhibit 6). No species/area sideboard allocation was exceeded.

DIRECTED BERING SEA COD AND GULF POLLOCK FISHERY

WFC's directed Bering Sea Pacific cod allocations and catches are presented in Exhibit 7 by member vessel. Directed cod catches totaled 498.924 mt, which was 949.899 mt below the co-op's final cod allocation. Bycatch of other groundfish, halibut, herring, crab and salmon in the WFC directed Bering Sea cod fishery is detailed in Exhibit 8.

WFC's directed Gulf of Alaska pollock catch totaled 1,101.345 mt, which was well below their allocation. Bycatches associated with this directed fishery are in Exhibit 9 and record of WFC's single transfer of Gulf pollock to another co-op is in Exhibit 10.

DIRECTED CRAB FISHING

Two WFC member vessels, both of which were License Limitation Program qualified to harvest crab, fished the 2001 *opilio* Tanner crab fishery and the 2001 Bristol Bay red king crab fishery. Their catches totaled 351,354 pounds of *opilio* and 80,150 pounds of red king crab (Exhibit 11).

CATCHES BY GULF SIDEBOARD EXEMPT MEMBER VESSELS

Two WFC member vessels are Gulf of Alaska sideboard exempt. Both vessels operated within co-op guidelines and they did not lease any of their Bering Sea pollock or cod. Their Gulf pollock and bycatches are provided in Exhibit 12.

WFC PROHIBITED SPECIES CATCH TOTALS, 2001

Member vessel prohibited species catch totals for herring, Bristol Bay red king crab, *bairdi* Tanner crab, other Tanner crab, chinook salmon and other salmon are provided in Exhibit 13.

WFC MONITORING AND ENFORCEMENT

All WFC directed Bering Sea pollock and cod catches, as well as sideboard catches and the halibut PSC were managed successfully managed and did not exceed allocations. The co-op was accordingly not required to take any enforcement actions.

Exhibit 1. Schematic of Westward Fleet Cooperative Operations, year 2001.

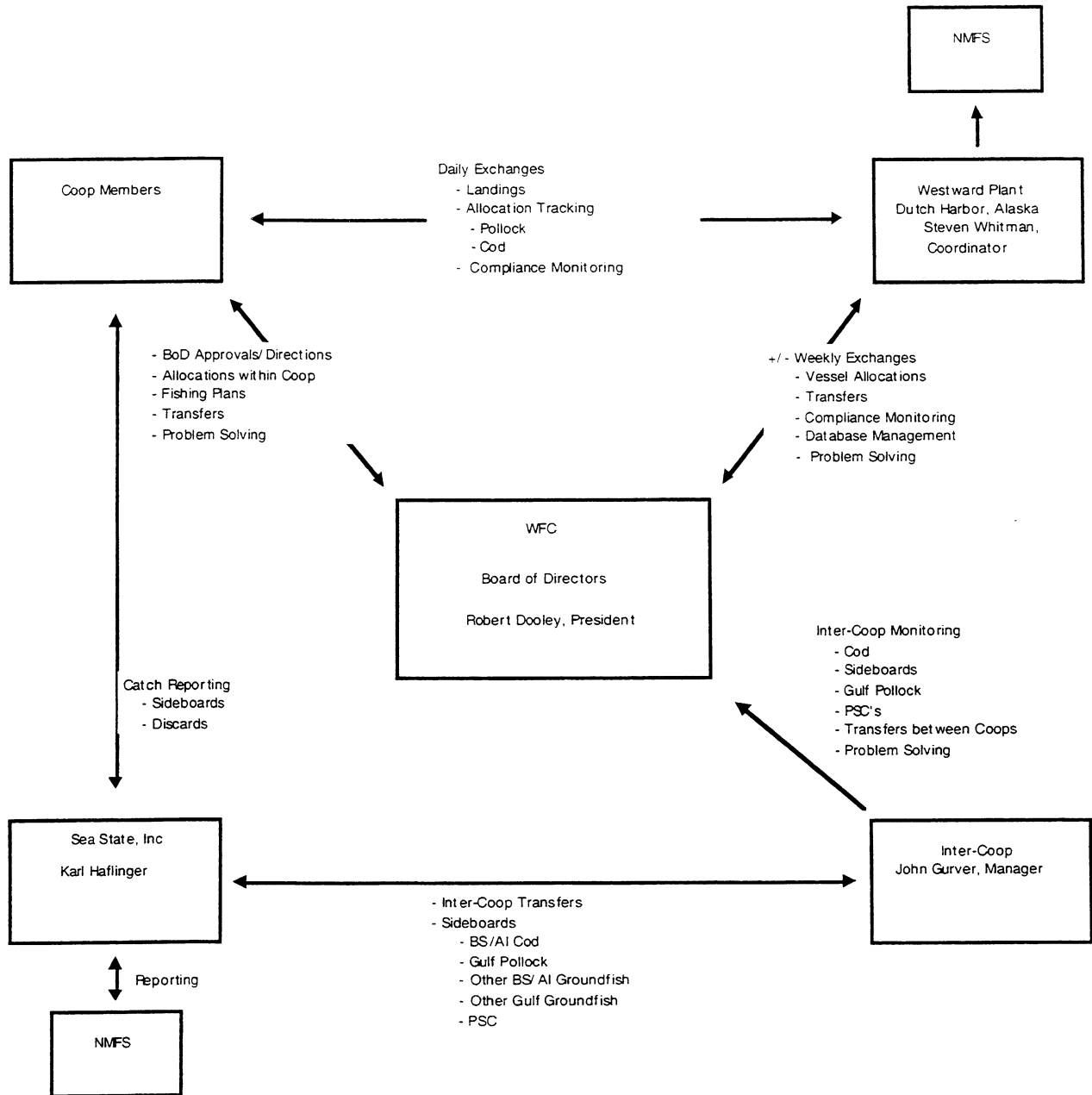


Exhibit 2. Westward Fleet Cooperative member vessel initial pollock allocations expressed as a percentage of the co-op total, as a percentage of the Bering Sea directed pollock fishery, and in metric tons for the year 2001.

Company Name	Member Vessels	% of Co-op Allocation	% of AFA Directed Pollock Fishery	Year 2001 Allocation (MT)
Alaskan Command LLC	Alaskan Command	2.008%	0.185%	2,235.031
Ocean Dynasty Limited Partnership	Chelsea K	25.150%	2.314%	27,988.111
Pacific Knight LLC	Pacific Knight	11.808%	1.086%	13,140.689
Viking Limited Partnership	Viking	8.968%	0.825%	9,980.367
Westward Limited Partnership	Westward 1	8.414%	0.774%	9,364.001
Pacific Prince General Partnership	Pacific Prince	12.866%	1.184%	14,317.935
John Dooley & Robert Dooley	Caitlin Ann	5.198%	0.478%	5,784.820
Hickory Wind LLC	Hickory Wind	1.555%	0.143%	1,730.898
AJ LLC	AJ	3.638%	0.335%	4,048.762
Mezich Allegiance, Inc.	Fierce Allegiance	5.075%	0.467%	5,647.844
U.S. Marine Corporation	Ocean Hope 3	2.637%	0.243%	2,934.829
Wa'atch, Inc.	Alyeska	6.583%	0.606%	7,326.397
Arctic Wind LLC	Arctic Wind	5.973%	0.550%	6,647.411
Chetna, Inc.	Pacific Challenger	0.125%	0.011%	138.904
Co-op Total		100.000%	9.200%	111,286.000

Exhibit 3. Westward Fleet Cooperative member vessel final Bering Sea directed pollock allocations for the year 2001.

Company Name	Member Vessels	Year 2001* Allocation (MT)	Within Co-op Net Transfer In & Out (MT)	Within Co-op Trades	Final Pollock Allocation (MT)
Alaskan Command LLC	Alaskan Command	2,271.983	18,804.790	0	21,076.773 **
Ocean Dynasty Limited Partnership	Chelsea K	28,260.747	681.590		28,942.337
Pacific Knight LLC	Pacific Knight	13,270.236	-13,270.236		0.000
Viking Limited Partnership	Viking	10,076.747	3,120.302	-6.301	13,190.748
Westward Limited Partnership	Westward 1	9,453.421	2,140.403		11,593.824
Pacific Prince General Partnership	Pacific Prince	14,454.573	-8.913	-89.013	14,356.647
John Dooley & Robert Dooley	Caitlin Ann	5,838.328	8.913	-190.064	5,657.177
Hickory Wind LLC	Hickory Wind	1,759.573		432.237	2,191.810
AJ LLC	AJ	4,079.272	-4,079.272		0.000
Mezich Allegiance, Inc.	Fierce Allegiance	5,709.320	-61.047	-128.013	5,520.260
U.S. Marine Corporation	Ocean Hope 3	2,965.984	-1.241		2,964.743
Wa'atch, Inc.	Alyeska	7,400.783	-7,400.783		0.000
Arctic Wind LLC	Arctic Wind	6,707.829	61.047	-18.846	6,750.030
Chetna, Inc.	Pacific Challenger	141.206			141.206
Co-op Total		112,390.000	-4.447	0.000	112,385.553

*Allocation includes initial allocation plus a 2nd allocation from the release of by-catch reserves from other groundfish fisheries in the C/D season.

** A total of 4.447 metric tons was subtracted from the F/V Alaskan Command's C/D season allocation to cover an overage made in the 2001 A/B season.

Exhibit 4. Comparison of Westward Fleet Cooperative member vessels directed Bering Sea pollock catches with final allocations, year 2001.

Company Name	Member Vessels	Final Pollock Allocation (MT)	Directed Bering Sea Pollock Catch by Vessel (MT)	Difference Over (+) Under (-)
Alaskan Command LLC	Alaskan Command	21,076.773	21,076.773	0.000
Ocean Dynasty Limited Partnership	Chelsea K	28,942.337	28,984.696	42.359
Pacific Knight LLC	Pacific Knight	0.000	0.000	0.000
Viking Limited Partnership	Viking	13,190.748	13,197.049	6.301
Westward Limited Partnership	Westward 1	11,593.824	11,593.824	0.000
Pacific Prince General Partnership	Pacific Prince	14,356.647	14,445.660	89.013
John Dooley & Robert Dooley	Caitlin Ann	5,657.177	5,858.434	201.257
Hickory Wind LLC	Hickory Wind	2,191.810	1,451.204	-740.606
AJ LLC	AJ	0.000	0.000	0.000
Mezich Allegiance, Inc.	Fierce Allegiance	5,520.260	5,648.273	128.013
U.S. Marine Corporation	Ocean Hope 3	2,964.743	2,791.686	-173.057
Wa'atch, Inc.	Alyeska	0.000	0.000	0.000
Arctic Wind LLC	Arctic Wind	6,750.030	6,770.802	20.772
Chetna, Inc.	Pacific Challenger	141.206	0.000	-141.206
Co-op Total		112,385.553	111,818.401	-567.152

Exhibit 5. Directed pollock fishing catch and bycatch and PSC's for the Westward Fleet Cooperative member vessels, year 2001.

Company Name	Member Vessels	Directed Bering Sea Pollock Catch by Vessel (MT)	Other Groundfish (MT)	Herring (MT)	Hallbut (#)	Red King Crab (#)	Bairdi Tanner Crab (#)	Other Tanner Crab (#)	Chinook Salmon (#)	Other Salmon (#)
Alaskan Command LLC	Alaskan Command	21,076.773	84.672	3,339	763	0	0	1	376	598
Ocean Dynasty Limited Partnership	Chelsea K	28,984.696	127,405	23,716	708	0	0	0	520	909
Pacific Knight LLC	Pacific Knight	0.000	0.000	0.000	0	0	0	0	0	0
Viking Limited Partnership	Viking	13,197.049	116,564	2,328	637	0	0	0	189	228
Westward Limited Partnership	Westward 1	11,593.824	117,236	7.26	789	0	1	2	228	154
Pacific Prince General Partnership	Pacific Prince	14,445.660	101,325	0.136	596	1	4	3	95	360
John Dooley & Robert Dooley	Caillin Ann	5,858.434	97,404	0.035	515	2	0	0	49	347
Hickory Wind LLC	Hickory Wind	1,451.204	9.69	9,765	8	0	0	0	1	98
AJ LLC	AJ	0.000	0.000	0.000	0	0	0	0	0	0
Mezich Allegiance, Inc.	Fierce Allegiance	5,648.273	42,242	0.42	116	0	0	26	191	133
U.S. Marine Corporation	Ocean Hope 3	2,791.686	17,754	8,601	92	0	0	0	43	193
Waratch, Inc.	Alyeska	0.000	0.000	0.000	0	0	0	0	0	0
Arctic Wind LLC	Arctic Wind	6,770.802	39,993	2,455	124	0	0	0	62	529
Chelma, Inc.	Pacific Challenger	0.000	0.000	0.000	0	0	0	0	0	0
Co-op Total		111,818.401	754,285	58,055	4,348	3	5	32	1,754	3,549

Exhibit 6. Sideboard limits and aggregate catch for the Westward Fleet Cooperative member vessels, year 2001.

Species/Area	Initial Westward Sideboard Limit (MT)	InterCoop Sideboard Transfer (MT)	Final Sideboard Limit (MT)	Co-op Catch (MT)	Difference Over "+" (MT) Under "-" (MT)
BSAI Pacific Cod	2,714.000	-88.177	2,625.823	498.923	-2,126.900
BSAI Yellowfin Sole	793.000	0.000	793.000	5.108	-787.892
BSAI Rock Sole	197.000	0.000	197.000	152.561	-44.439
Western GOA Pacific Cod	22.000	0.000	22.000	0.000	-22.000
Central GOA Pacific Cod	2.000	0.000	2.000	0.000	-2.000
Area 610 "A" season Pollock	926.000	-926.000	0.000	0.000	0.000
Area 620 "A" season Pollock	5.000	0.000	5.000	0.000	-5.000
Area 630 "A" season Pollock	0.000	0.000	0.000	0.000	0.000
Shelikof "A" season Pollock	0.000	0.000	0.000	0.000	0.000
Area 610 "B" season Pollock	463.000	0.000	463.000	0.000	-463.000
Area 620 "B" season Pollock	2.000	0.000	2.000	0.000	-2.000
Area 630 "B" season Pollock	0.000	0.000	0.000	0.000	0.000
Shelikof "B" season Pollock	0.000	0.000	0.000	0.000	0.000
Area 610 "C" season Pollock	1,322.000	0.000	1,322.000	0.000	-1,322.000
Area 620 "C" season Pollock	58.000	0.000	58.000	0.000	-58.000
Area 630 "C" season Pollock	0.000	0.000	0.000	0.000	0.000
Area 610 "D" season Pollock	1,102.000	0.000	1,102.000	1,101.345	-0.655
Area 620 "D" season Pollock	48.000	0.000	48.000	0.000	-48.000
Area 630 "D" season Pollock	0.000	0.000	0.000	0.000	0.000
WGOA shallow-water flatfish	1.000	0.000	1.000	0.000	-1.000
CGOA shallow-water flatfish	1.000	0.000	1.000	0.000	-1.000
EGOA shallow-water flatfish	0.000	0.000	0.000	0.000	0.000
CGOA deep-water flatfish	0.000	0.000	0.000	0.000	0.000
CGOA Northern Rockfish	0.000	0.000	0.000	0.000	0.000
CGOA Pacific Ocean Perch	0.000	0.000	0.000	0.000	0.000
EGOA Pacific Ocean Perch	0.000	0.000	0.000	0.000	0.000
Co-op All Species Sideboard Total	7,656.000	-1,014.177	6,641.823	1,757.937	-4,883.886
PSC limited halibut for Bering Sea Directed Pacific Cod fishery	56.000			6.240	

Exhibit 7. Comparison of Westward Fleet Cooperative member vessels directed Bering Sea Pacific cod catches with final allocations, year 2001.

Company Name	Member Vessels	Initial Co-op Cod Allocation (MT)	Westward Co-op Transfers (MT)		InterCo-op Transfers (MT)		Westward Final Adjusted Cod Allocation (MT)	Directed Bering Sea Cod Catch by Vessel (MT)	Difference Over (+) Under (-)
			In (+), Out (-)	In (+), Out (-)	In (+), Out (-)	In (+), Out (-)			
Alaskan Command LLC	Alaskan Command	0.000	0.000	0.000	0.000	0.000	0.000	0.000	0.000
Ocean Dynasty Limited Partnership	Chelsea K	40.323	0.000	0.000	0.000	40.323	0.000	-40.323	-40.323
Pacific Knight LLC	Pacific Knight	86.575	0.000	0.000	0.000	86.575	0.000	-86.575	-86.575
Viking Limited Partnership	Viking	189.753	0.000	0.000	0.000	189.753	42.213	-147.540	-147.540
Westward Limited Partnership	Westward 1	177.893	0.000	0.000	0.000	177.893	44.046	-133.847	-133.847
Pacific Prince General Partnership	Pacific Prince	208.729	0.000	0.000	0.000	208.729	0.000	-208.729	-208.729
John Dooley & Robert Dooley	Caitlin Ann	225.332	0.000	0.000	0.000	225.332	190.846	-34.486	-34.486
Hickory Wind LLC	Hickory Wind	64.042	0.000	0.000	0.000	64.042	0.000	-64.042	-64.042
AJ LLC	AJ	188.567	0.000	0.000	0.000	188.567	0.000	-188.567	-188.567
Mezich Allegiance, Inc.	Fierce Allegiance	136.385	0.000	0.000	0.000	136.385	98.979	-37.406	-37.406
U.S. Marine Corporation	Ocean Hope 3	0.000	0.000	0.000	0.000	0.000	0.000	0.000	0.000
Watch, Inc.	Alyeska	0.000	0.000	0.000	0.000	0.000	0.000	0.000	0.000
Arctic Wind LLC	Arctic Wind	219.402	0.000	0.000	-88.177	131.225	122.840	-8.385	-8.385
Cheina, Inc.	Pacific Challenger	0.000	0.000	0.000	0.000	0.000	0.000	0.000	0.000
Co-op Total		1,537.000	0.000	0.000	-88.177	1,448.823	498.924	-949.899	-949.899

Exhibit 8. Directed Pacific cod fishing catch and bycatch for the Westward Fleet Cooperative member vessels, year 2001.

Company Name	Member Vessels	Directed Bering Sea Cod Catch by Vessel (MT)	Other Groundfish* Catch (MT)	Hallbut Mortality (MT)	Herring Catch (MT)	Red King Crab (#)	Bairdi Tanner Crab (#)	Other Tanner Crab (#)	Chinook Salmon (#)	Other Salmon (#)
Alaskan Command LLC	Alaskan Command	0.000	0.000	0	0.000	0	0	0	0	0
Ocean Dynasty Limited Partnership	Chelisea K	0.000	0.000	0	0.000	0	0	0	0	0
Pacific Knight LLC	Pacific Knight	0.000	0.000	0	0.000	0	0	0	0	0
Viking Limited Partnership	Viking	42.213	24.374	1.2	0.000	0	0	0	1	0
Westward Limited Partnership	Westward 1	44.046	13.482	1.31	0.000	0	0	27	18	0
Pacific Prince General Partnership	Pacific Prince	0.000	0.000	0	0.000	0	0	0	0	0
John Dooley & Robert Dooley	Caitlin Ann	190.846	4.496	1.35	0.000	1	0	0	0	0
Hickory Wind LLC	Hickory Wind	0.000	0.000	0	0.000	0	0	0	0	0
AJ LLC	AJ	0.000	0.000	0	0.000	0	0	0	0	0
Mezich Allegiance, Inc.	Fierce Allegiance	98.979	0.111	0.04	0.000	0	0	0	0	0
U.S. Marine Corporation	Ocean Hope 3	0.000	0.000	0	0.000	0	0	0	0	0
Waatch, Inc.	Alyeska	0.000	0.000	0	0.000	0	0	0	0	0
Arctic Wind LLC	Arctic Wind	122.840	11.499	2.34	0.000	0	0	0	7	0
Chelna, Inc.	Pacific Challenger	0.000	0.000	0	0.000	0	0	0	0	0
Co-op Total		498.924	53.962	6.240	0.000	1	0	27	26	0

Exhibit 9. Directed Gulf of Alaska Pollock fishing catch, bycatch and PSC's for the Westward Fleet Cooperative member vessels for Area 610, year 2001.

Company Name	Member Vessels	Directed Gulf of Alaska Total Pollock Catch	Other Groundfish Catch	Herring (MT)	Halibut (#)	Red King Crab (#)	Bairdi Tanner Crab (#)	Opilio Tanner Crab (#)	Chinook Salmon (#)	Other Salmon (#)
Chelna, Inc.	Pacific Challenger	1,101.345	0.901	0	3	0	0	0	29	26

Exhibit 10. Transfers of Westward Fleet Cooperative Gulf of Alaska pollock sideboard limits to other catcher vessel co-ops, year 2001.

Gulf Area/Season	Transfers To	Transfer Amount (MT)
610 A	High Seas Coop	923
Total GOA Transfers		923

Exhibit 11. Directed crab fishing landed catch by Westward Fleet Cooperative member vessels which were qualified to harvest Bering Sea crab.

Company Name	Member Vessel	Bristol Bay Red King Crab		Bering Sea <i>Opilio</i> Tanner Crab	
		*Pounds	*Numbers	Pounds	Numbers
Arctic Wind, LLC	Arctic Wind	28,775	4,290	177,861	136,816
Mezich Allegiance, Inc.	Fierce Allegiance	51,930	8,113	173,493	133,456
Co-op Total		80,705	12,403	351,354	270,272

* Total Pounds and Numbers of crab include crab that was not sold but for personal use, a total of 150 lbs (22 ea) and 405 lbs (63 ea) respectively.

Exhibit 12. Directed Gulf of Alaska Pollock catches by Westward Fleet Cooperative member vessels qualified as Gulf of Alaska exempt vessels.

Company Name	Member Vessels	Directed Gulf of Alaska Pollock Catch by Vessel (MT)	Other Groundfish (MT)	Herring (MT)	Halibut (#)	Red King Crab (#)	Bairdi Tanner Crab (#)	Other Tanner Crab (#)	Chinook Salmon (#)	Other Salmon (#)
Hickory Wind LLC	Hickory Wind	527.253	45.429	0	12	0	0	0	73	20
U.S. Marine Corporation	Ocean Hope 3	192.230	11.119	0	2	0	0	0	9	0
Co-op Total		719.483	56.548	0	14	0	0	0	82	20

Exhibit 13. Westward Fleet Cooperative vessel-by-vessel prohibited species catch, year 2001.

Company Name	Member Vessels	Habitat Mortality Rate In P. Cod Fishery (MT)	Habitat PSC In Pollock Fishery (MT)	Total Herring Catch (MT)	Total Red King Crab (#)	Total Bairdi Tanner Crab (#)	Total Other Tanner (#)	Total Chinook Salmon (#)	Total Other Salmon (#)
Alaskan Command LLC	Alaskan Command	0	763	3,339	0	0	1	376	598
Ocean Dynasty Limited Partnership	Chelsea K	0	708	23,716	0	0	0	520	909
Pacific Knight LLC	Pacific Knight	0	0	0	0	0	0	0	0
Viking Limited Partnership	Viking	1.2	637	2,328	0	0	0	190	228
Westward Limited Partnership	Westward 1	1.31	789	7,26	0	1	29	246	154
Pacific Prince General Partnership	Pacific Prince	0	596	0,136	1	4	3	95	360
John Dooley & Robert Dooley	Caitlin Ann	1.35	515	0,035	3	0	0	49	347
Hickory Wind LLC	Hickory Wind	0	8	9,765	0	0	0	1	98
AJ LLC	AJ	0	0	0	0	0	0	0	0
Mezich Allegiance, Inc.	Fierce Allegiance	0.04	116	0,42	0	0	26	191	133
U.S. Marine Corporation	Ocean Hope 3	0	92	8,601	0	0	0	43	193
Watch, Inc.	Alyeska	0	0	0	0	0	0	0	0
Arctic Wind LLC	Arctic Wind	2.34	124	2,455	0	0	0	69	529
Chetna, Inc.	Pacific Challenger	0	0	0	0	0	0	0	0
Co-op Total		6.24	4,348	58,055	4	5	59	1,780	3,549