

Arrow crab, *Stenorhynchus seticornis*. Photo taken at 9m water depth.

HI-A595-D



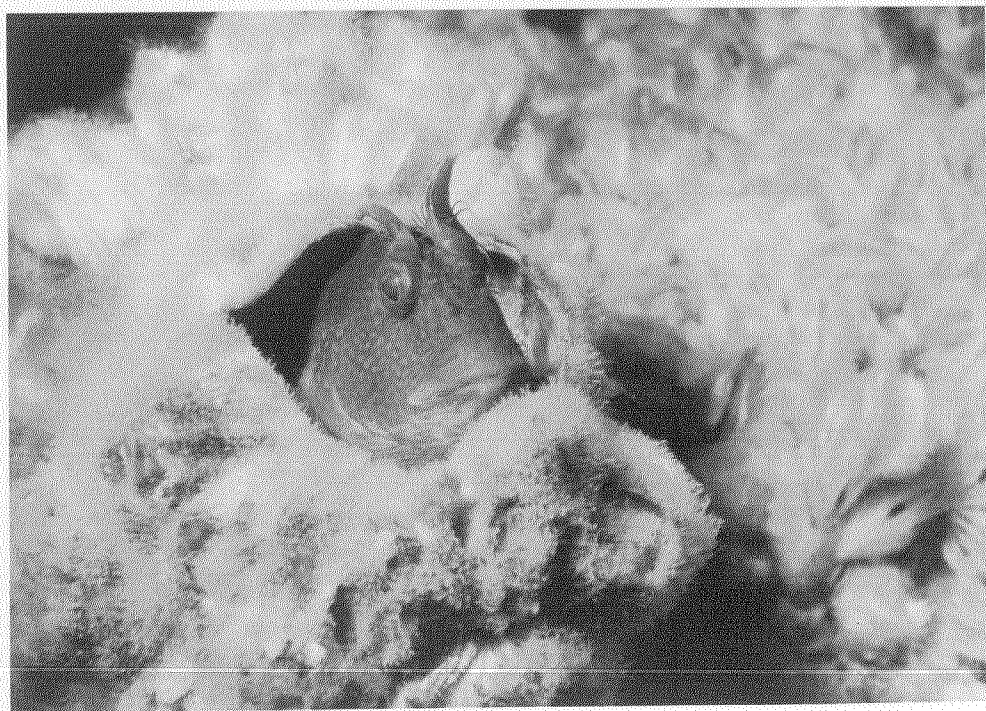
Arms of brittle stars in sponge mat. *Ophiothrix* or *Ophiactis* sp. Photo taken at 2m water depth. LGL file photo.

ST-128A



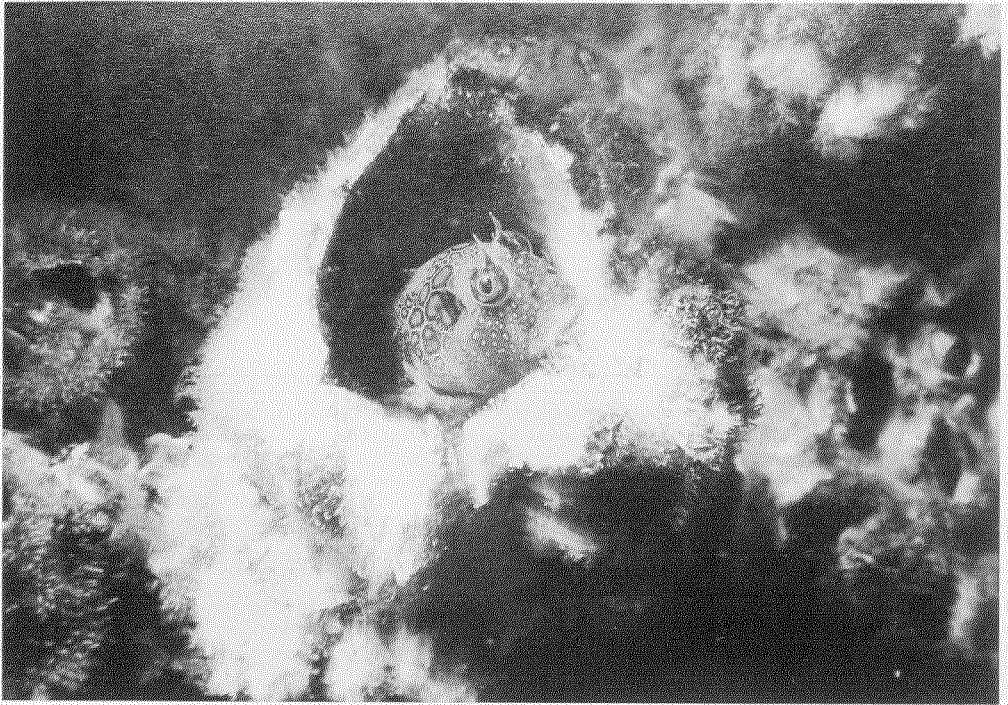
Molly Miller, *Blennius cristatus*. Photo taken at 1m water depth.

GA-296-B



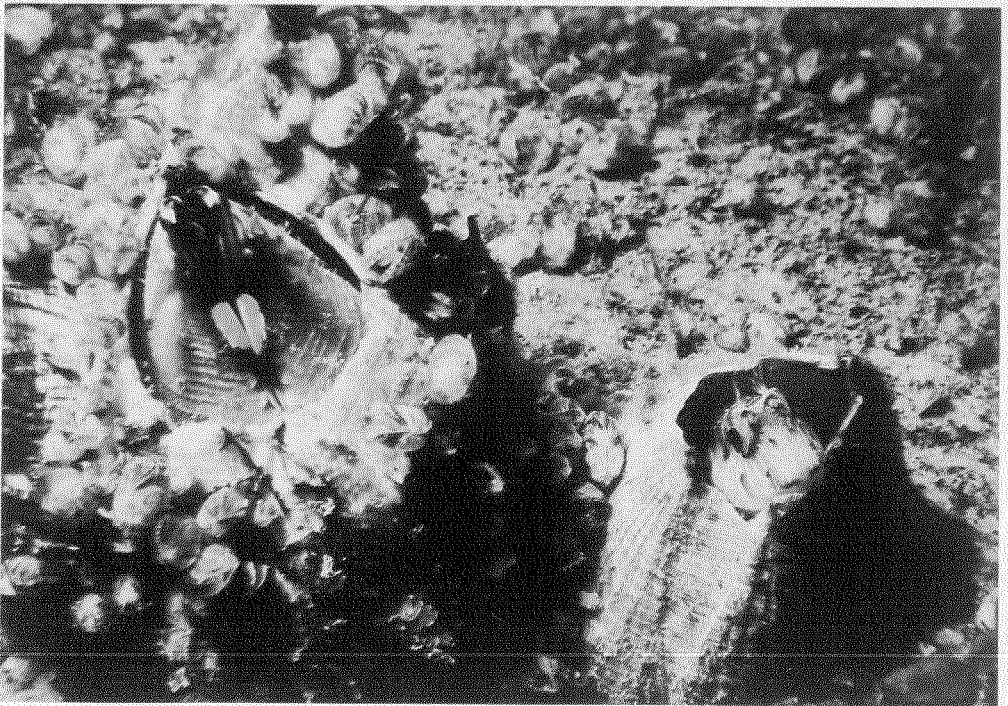
Crested blenny, *Hypleurochilus geminatus*. Photo taken at 2m water depth.

WC-333-A



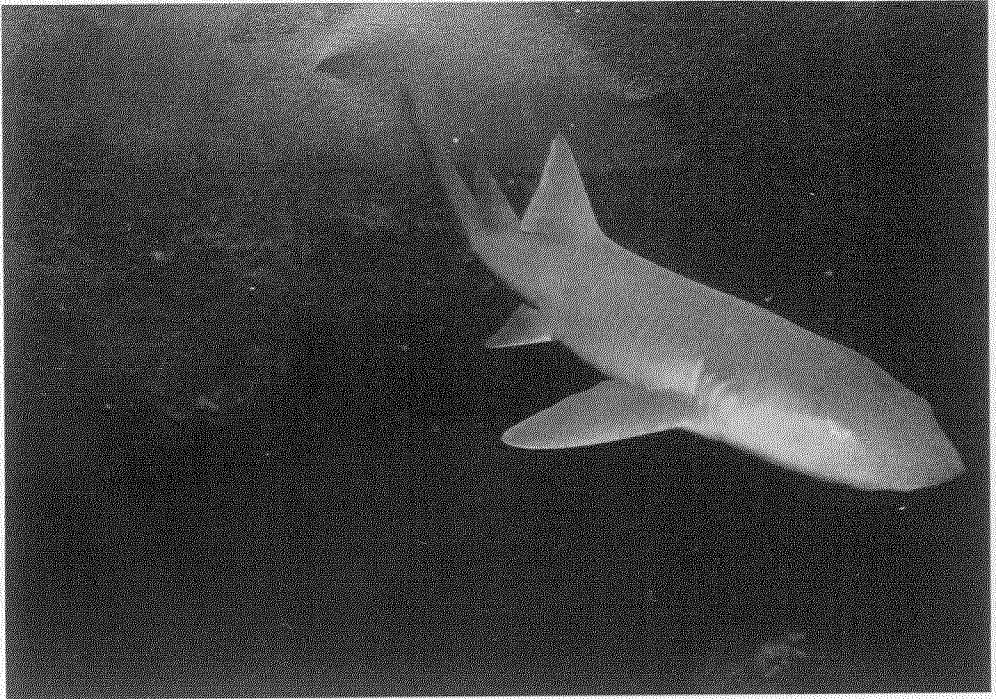
Orangespotted blenny, *Hypsoblennius invemar*. Photo taken at 2m water depth.

WC-333-A



Seaweed blenny, *Blennius marmoratus*. Photo taken at 2m water depth.

NPI-A42-A



Nurse shark, *Ginglymostoma cirratum*. Photo taken at 14m water depth.

ST-128A



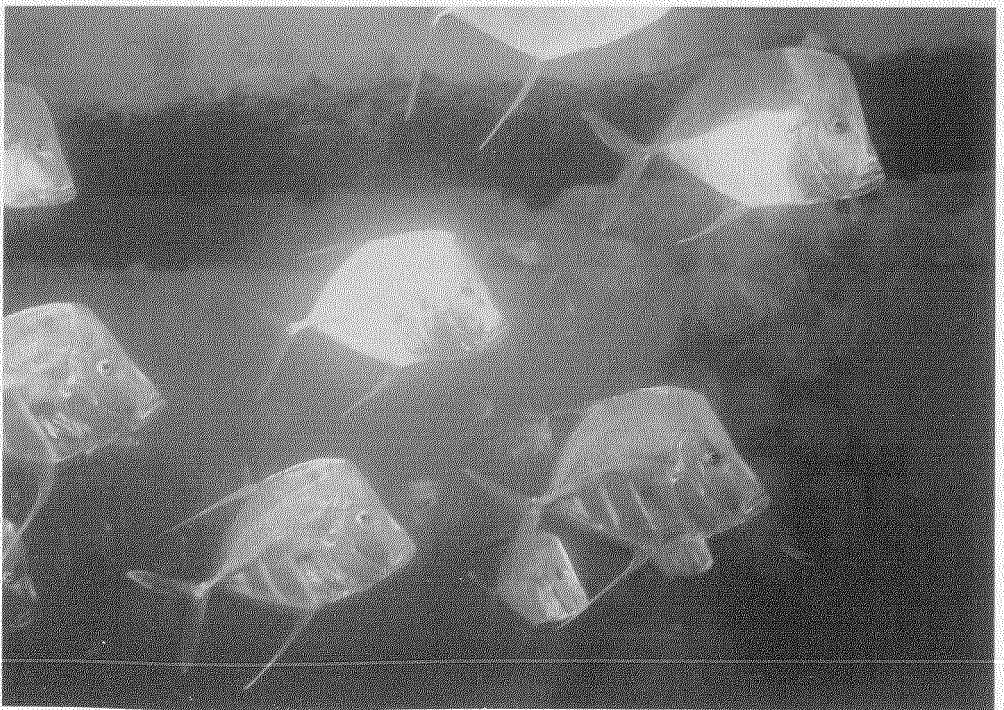
Greater amberjack, *Seriola dumerili*. Photo taken at 20m water depth.

EHI-334-B



Blue runner, *Caranx crysos*. Photo taken at 10m water depth.

HI-595-D



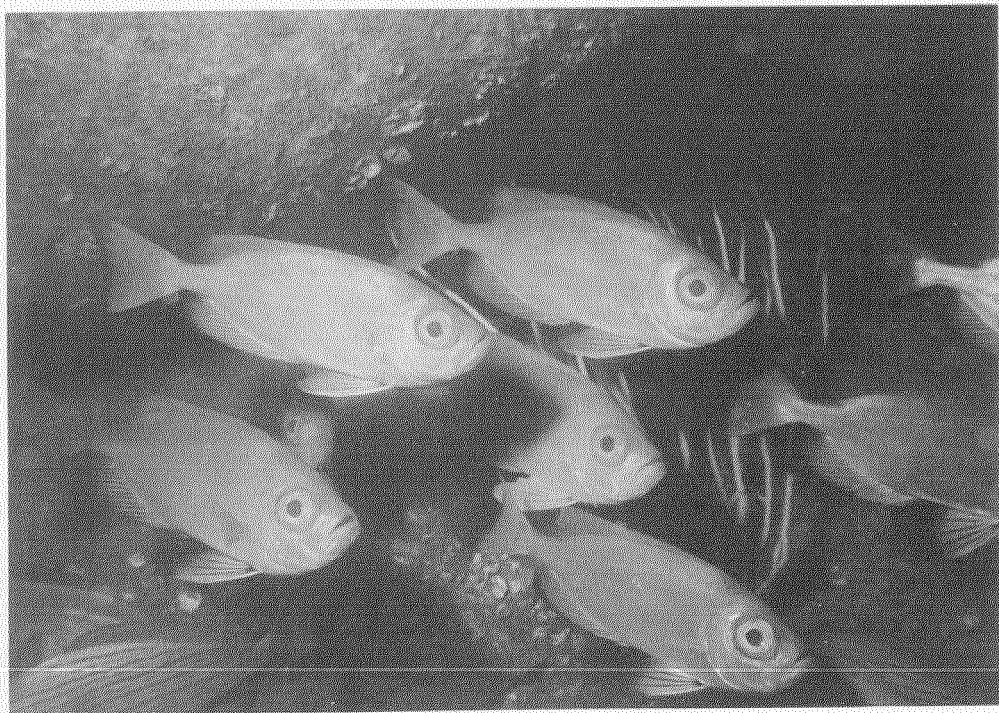
Lookdown, *Selene vomer*. Photo taken at 15m water depth.

ST-128A



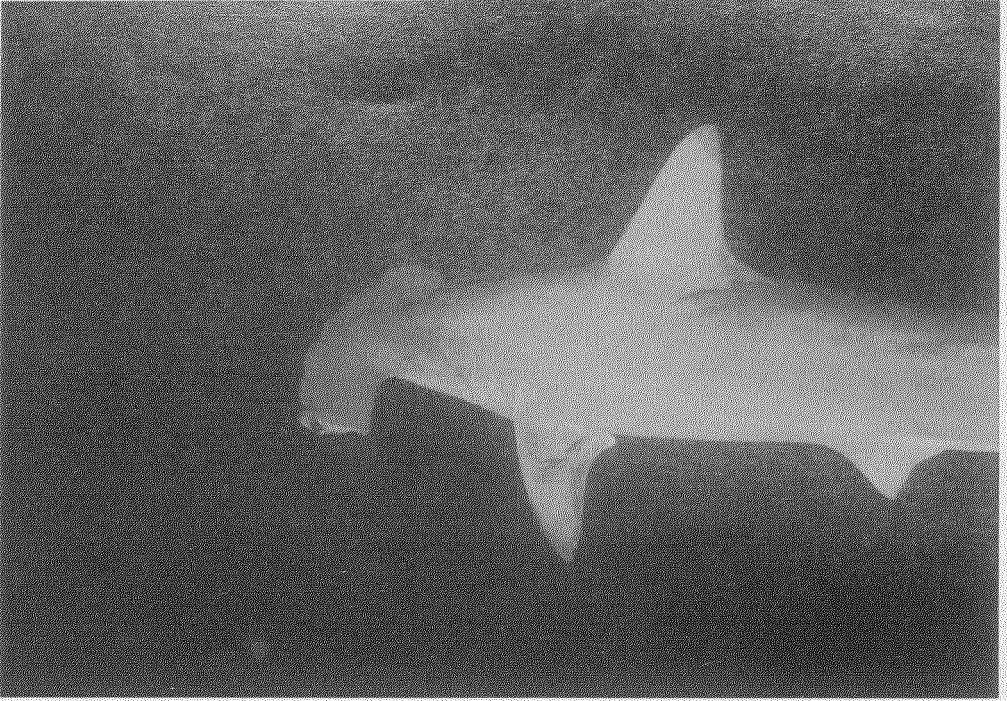
School of primarily tomtate, *Haemulon aurolineatum*

GA-296-6



Bigeye *Priacanthus arenatus*

SPI-1048L



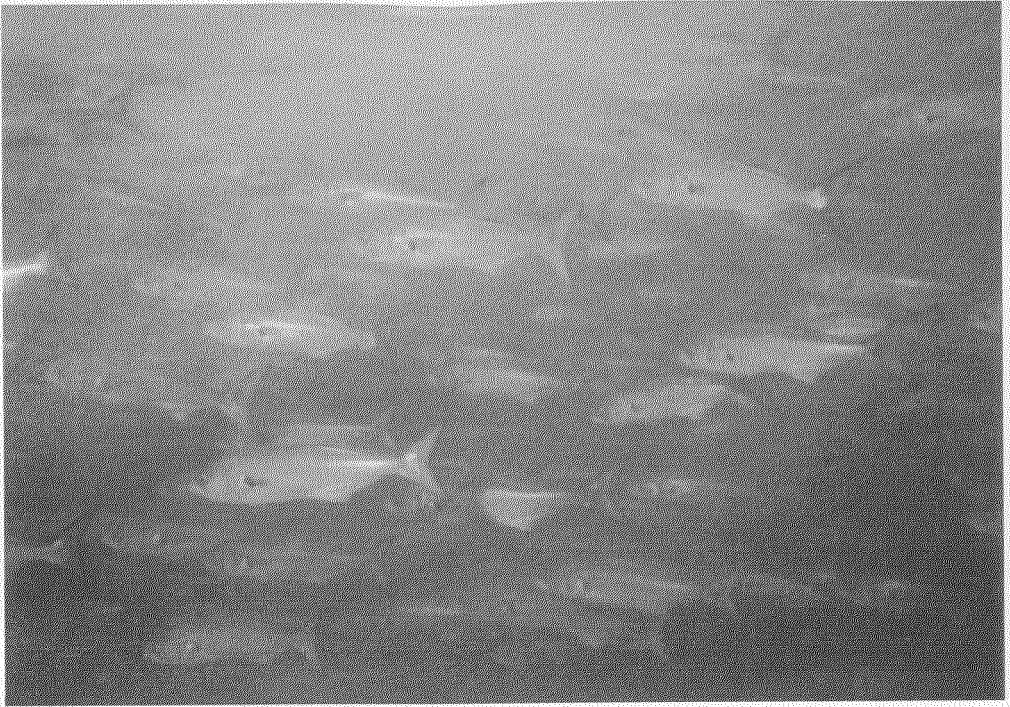
Scalloped hammerhead, *Sphyrna lewini*. Photo taken at 5m water depth.

GA-296-B



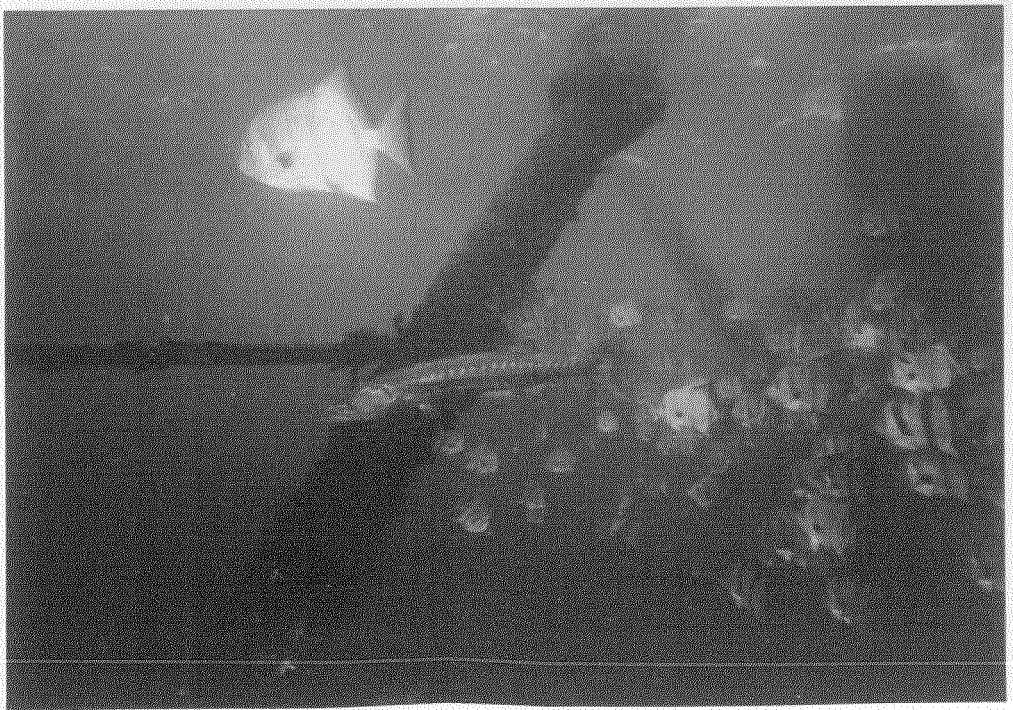
Almaco jack, *Seriola rivoliana*. Photo taken at 20m water depth.

EHI-334-B



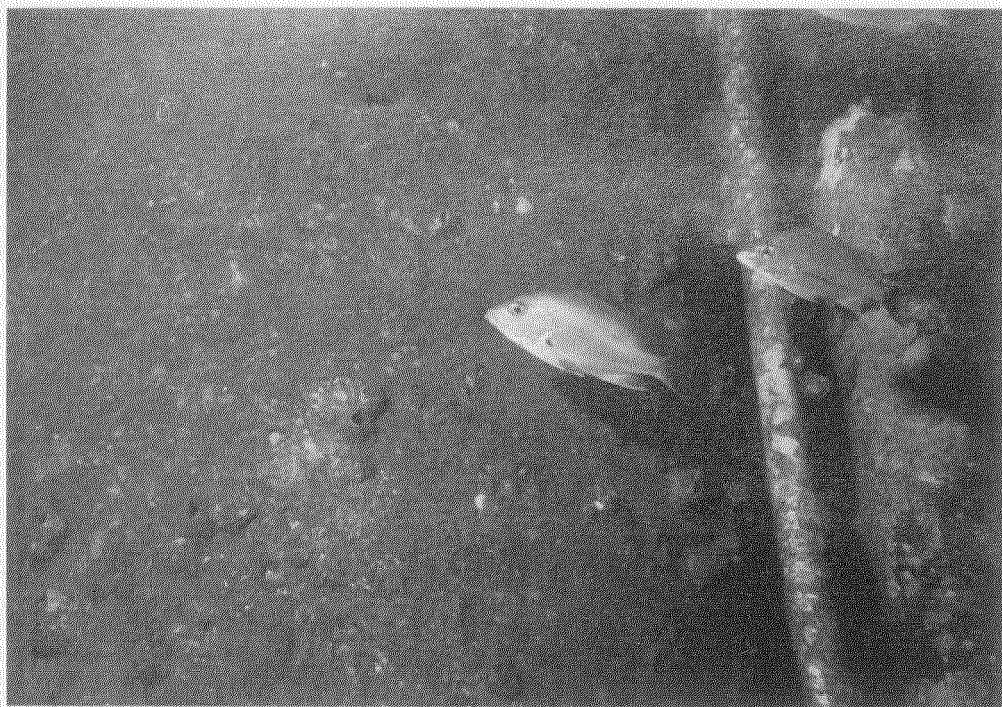
Bluefish, *Pomatomus saltatrix*. Photo taken at 10m water depth.

ST-128A



Great barracuda, *Sphyræna barracuda*, and spadefish, *Chaetodipterus faber*. Photo taken at 2m water depth.

ST-161A



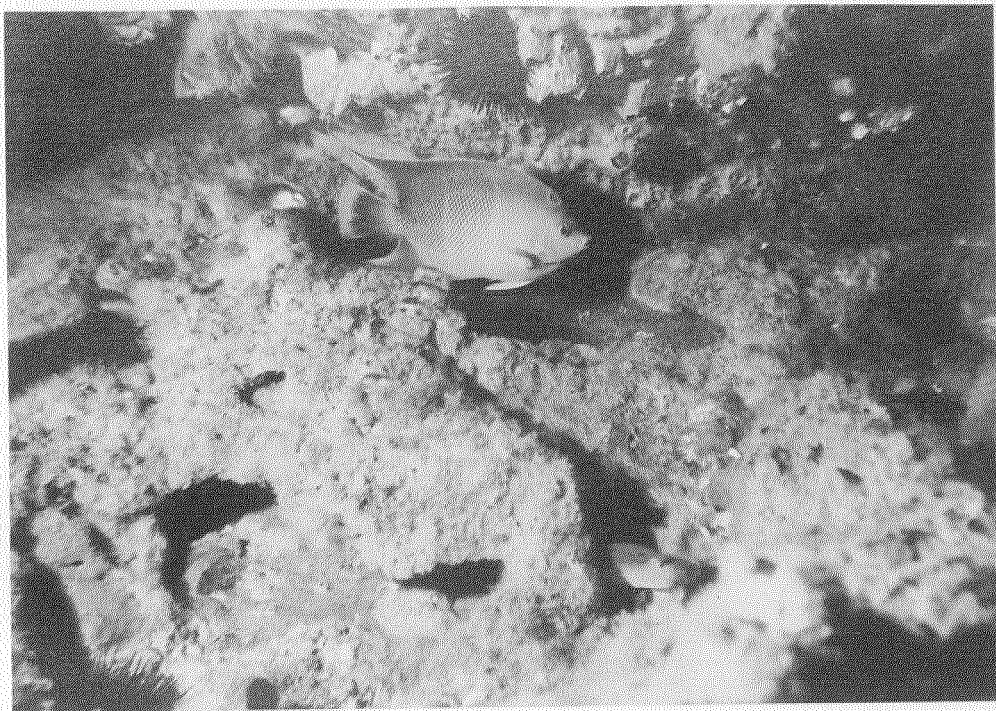
Red snapper, *Lutjanus campechanus*. Photo taken at 20m water depth.

GA-296B



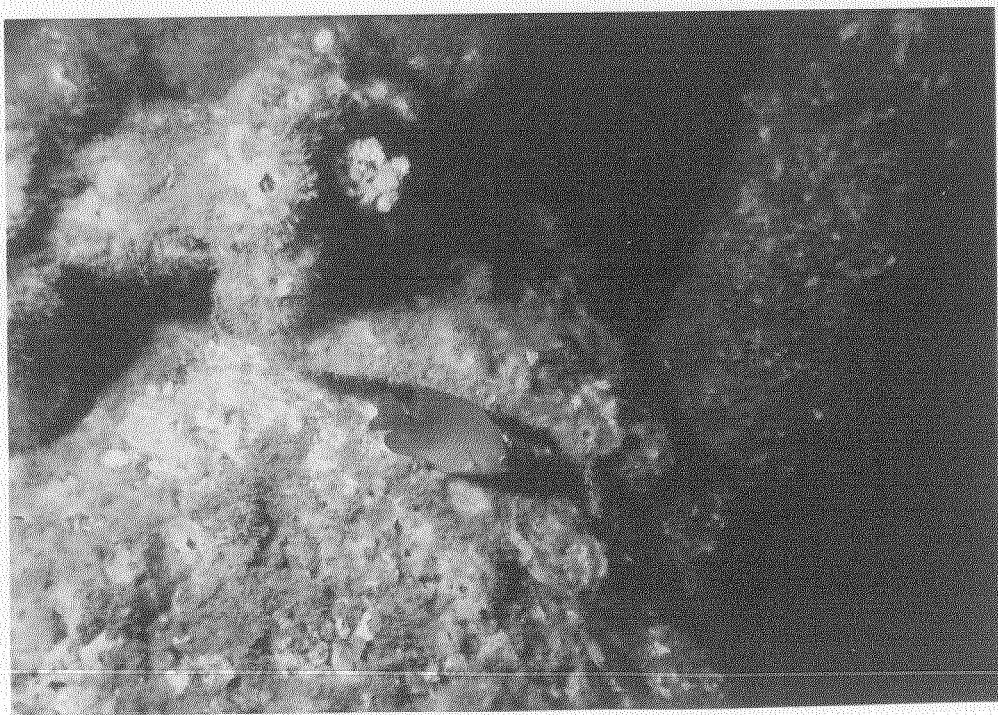
Grey snapper, *Lutjanus griseus*. Photo taken at 5m water depth.

ST-161A



Queen angelfish, *Holacanthus ciliaris*. Photo taken at 10m water depth.

WC-333-A



Cocoa damsel, *Pomacentrus variabilis*. Photo taken at 3m water depth.

WD-32A



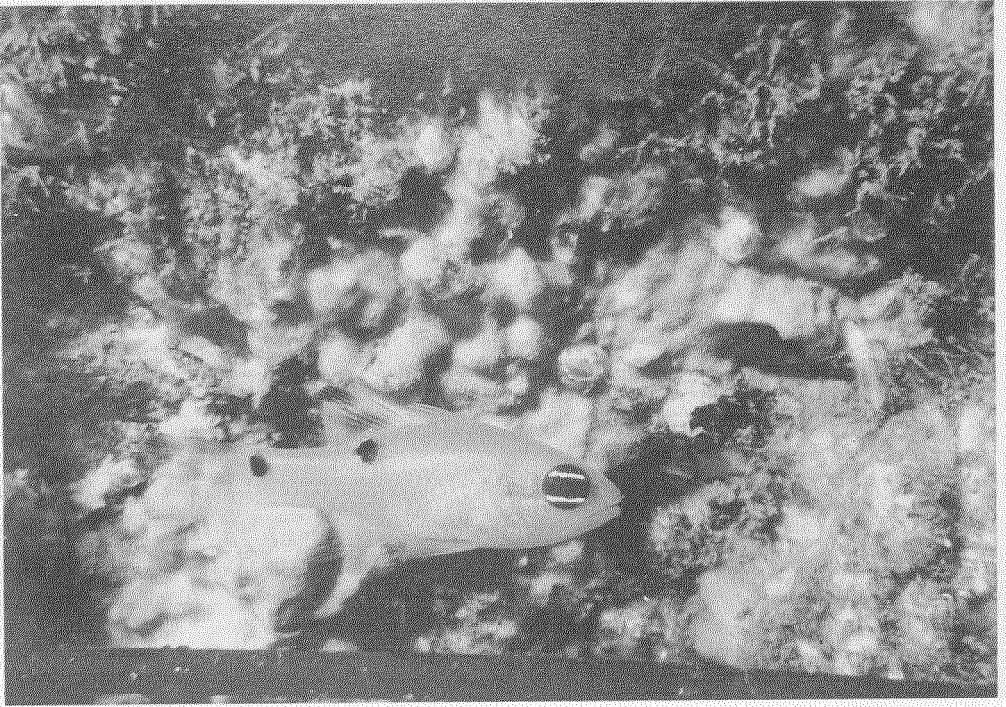
Spotfin butterflyfish, *Chaetodon ocellatus*. Photo taken at 5m water depth.

GA-296-B



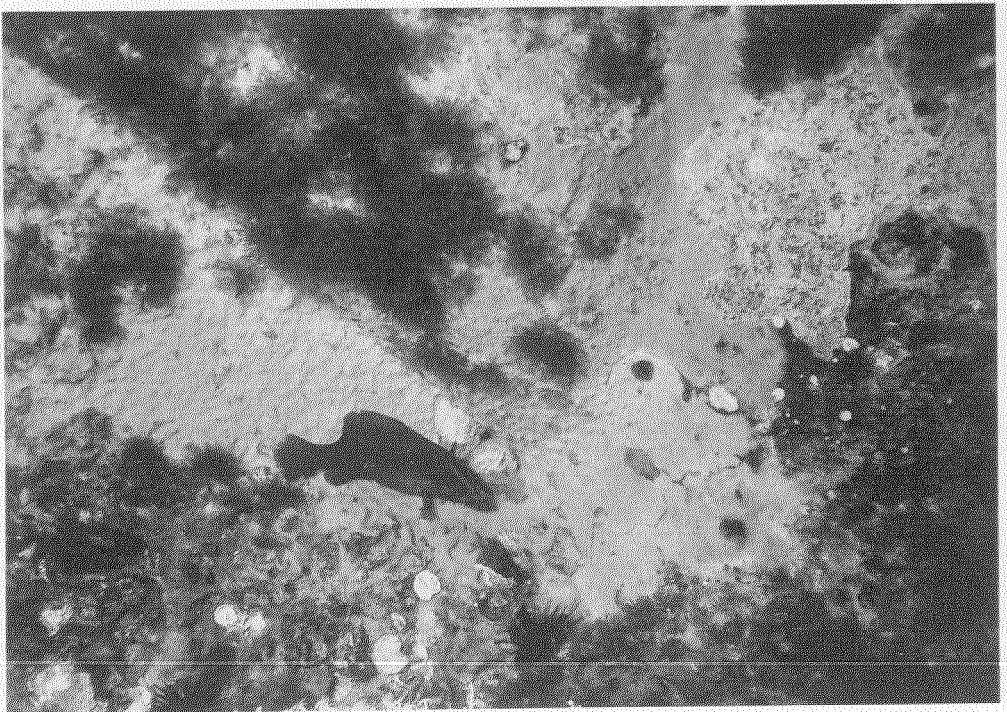
Blue tang, *Acanthurus coeruleus*, and sergeant major, *Abudefduf saxatilis*. Photo taken at 1m water depth.

HI-A595-D



Flamefish, *Apogon maculatus*. Photo taken at 10m water depth.

WD-32A



Whitespotted soapfish, *Rypiticus maculatus*. Photo taken at 5m water depth.

ST-161A



Sheepshead, *Archosargus probatocephalus*. Photo taken at 20m water depth.

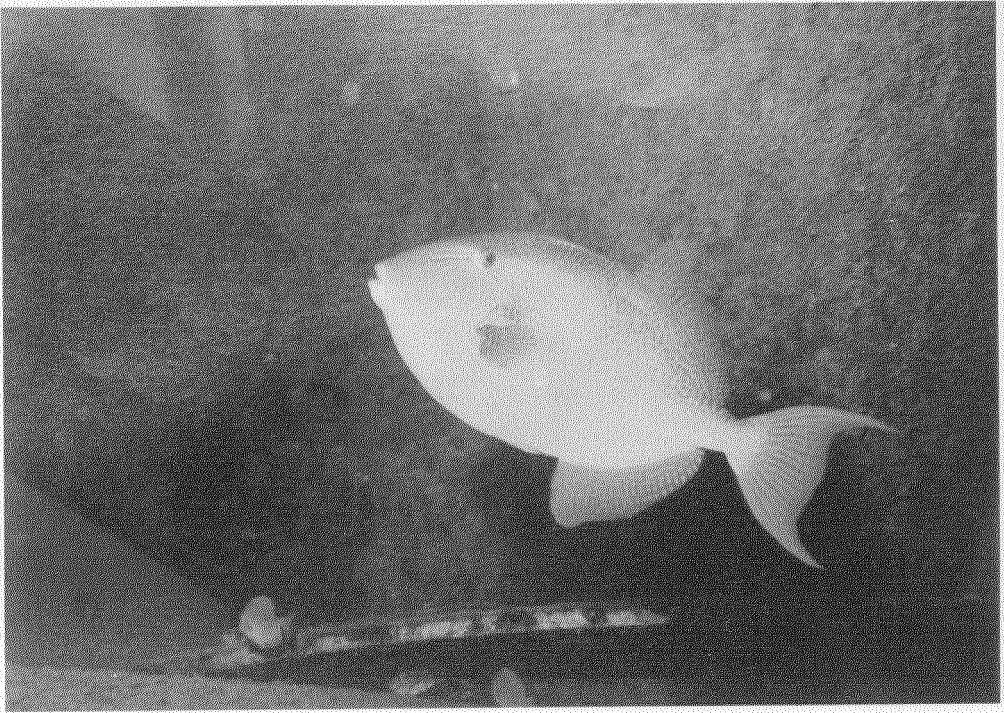
ST-161A



Chub, *Kyphosus* sp. Photo taken at 2m water depth.

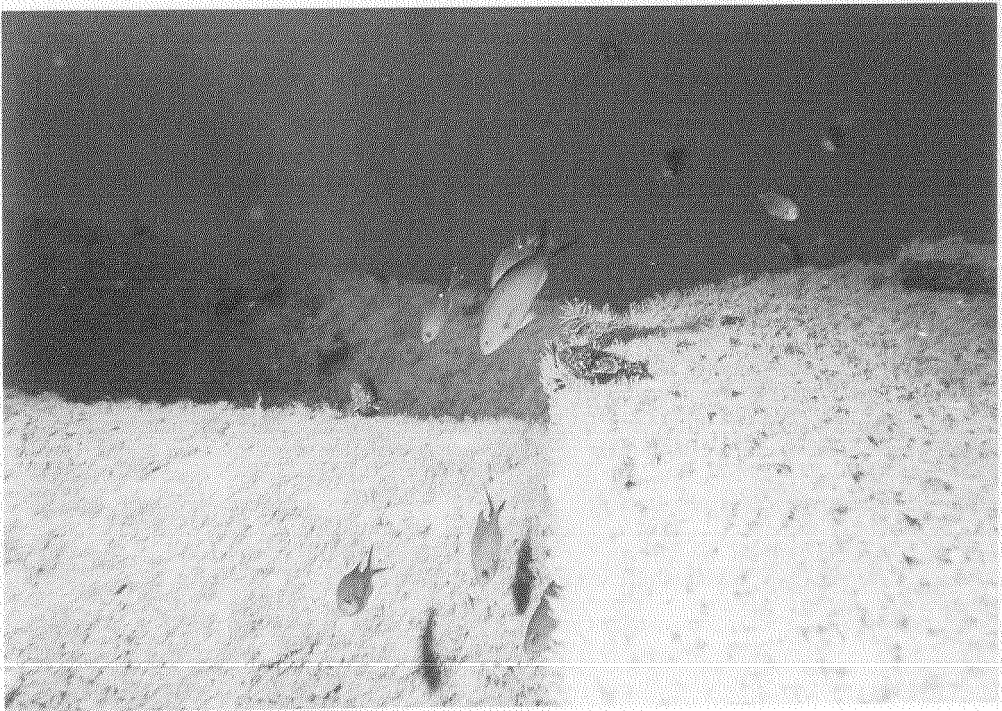
GA-296-B

FISHES



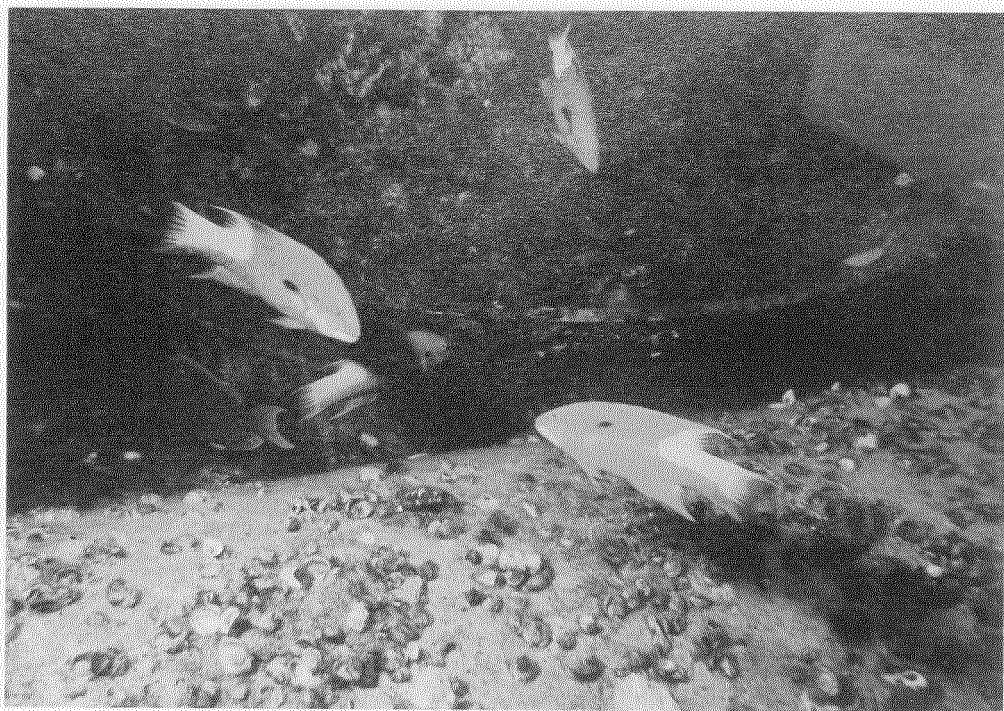
Grey triggerfish, *Balistes capriscus*. Photo taken at 10m water depth.

HI-A595-D



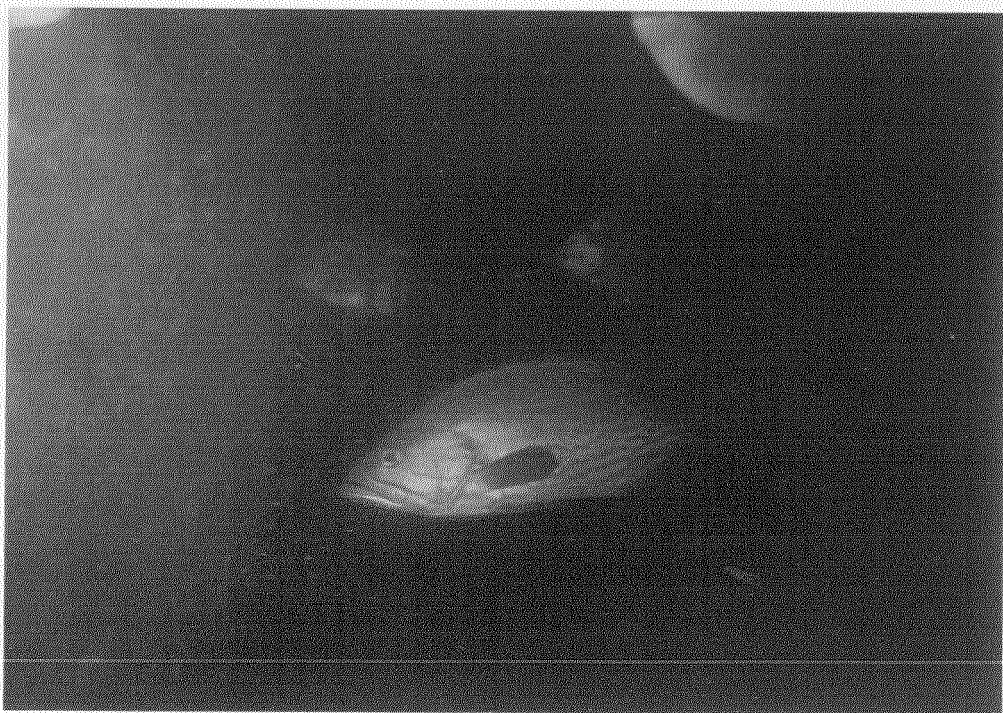
Creole fish, *Paranthias furcifer*, and brown chromis, *Chromis multilineatus*. Photo taken at 10m water depth.

HI-A595-D



Spotfin hogfish, *Bodianus pulchellus*. Photo taken at 10m water depth.

HI-573-A



Comb grouper, *Mycteroperca rubra*. Photo taken at 10m water depth.

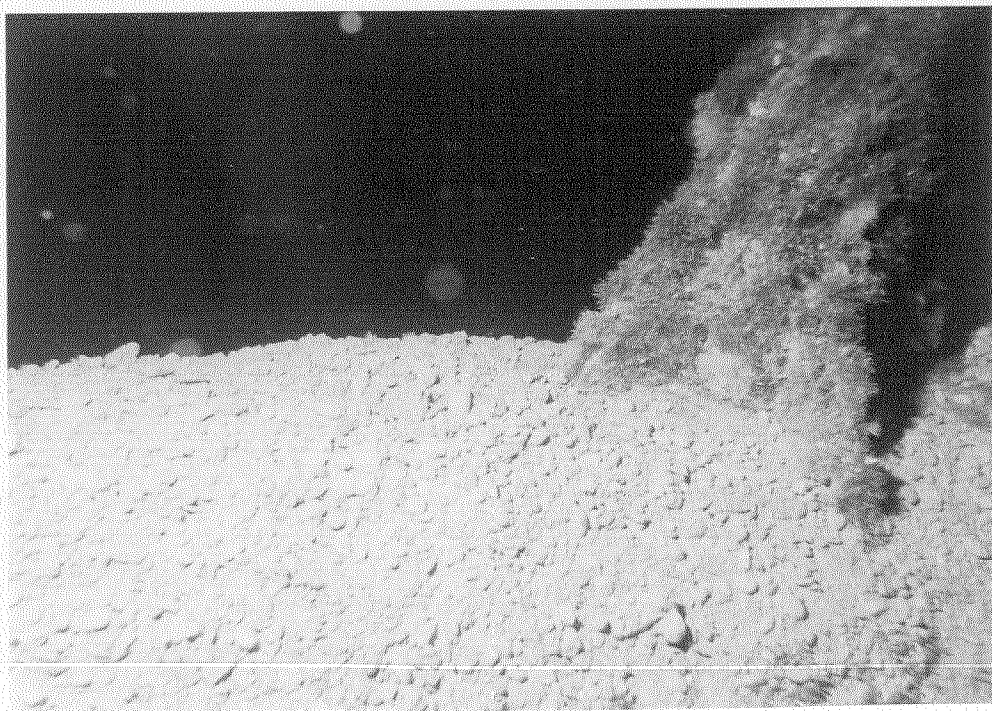
BM-3KN

DRILL CUTTINGS



Drill cuttings deposited on horizontal cross-members. Photo taken at 11m water depth.

NPI-A42-A



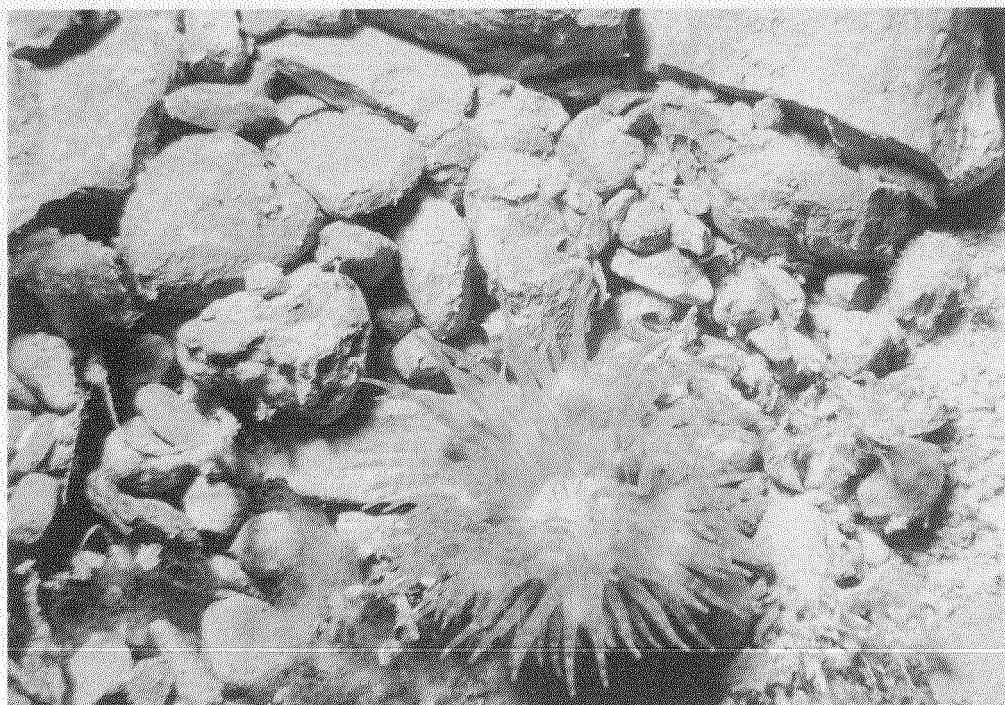
Drill cuttings on individual horizontal cross member. Photo taken at 11m water depth.

NPI-A42-A



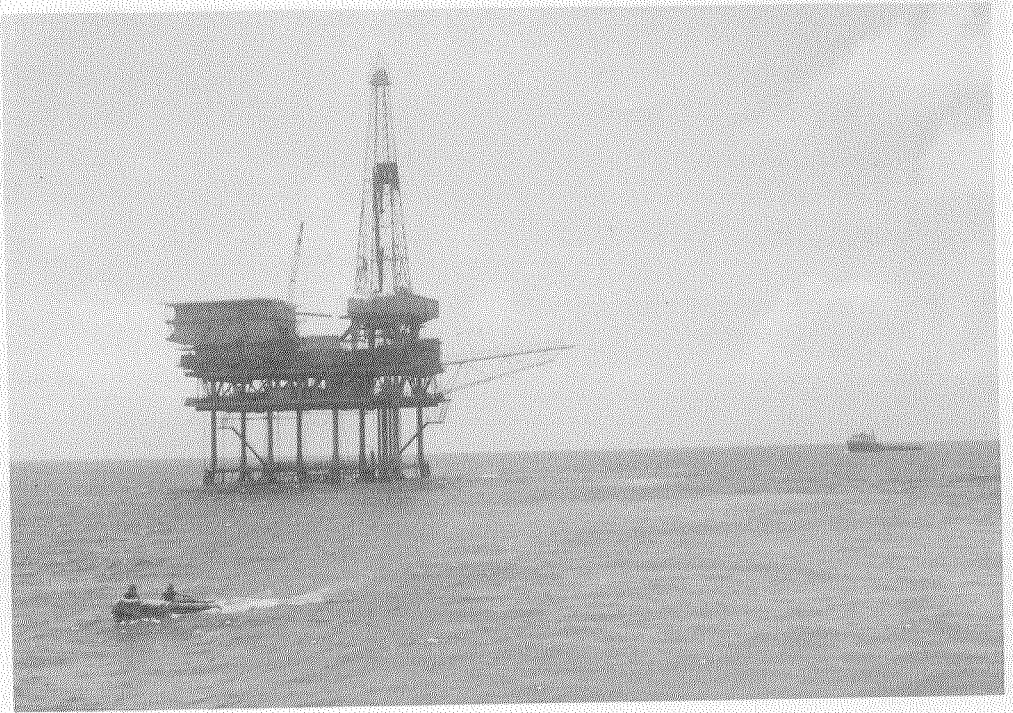
Drill cuttings utilized for habitat by whitespotted soapfish and rock hinds. Photo taken at 11m water depth.

NPI-A42-A



Anemone living at edge of drill cutting pile. Photo taken at 11m water depth.

NPI-A42-A



Periodic above-water mud discharges moving with current.

HI-A595-D



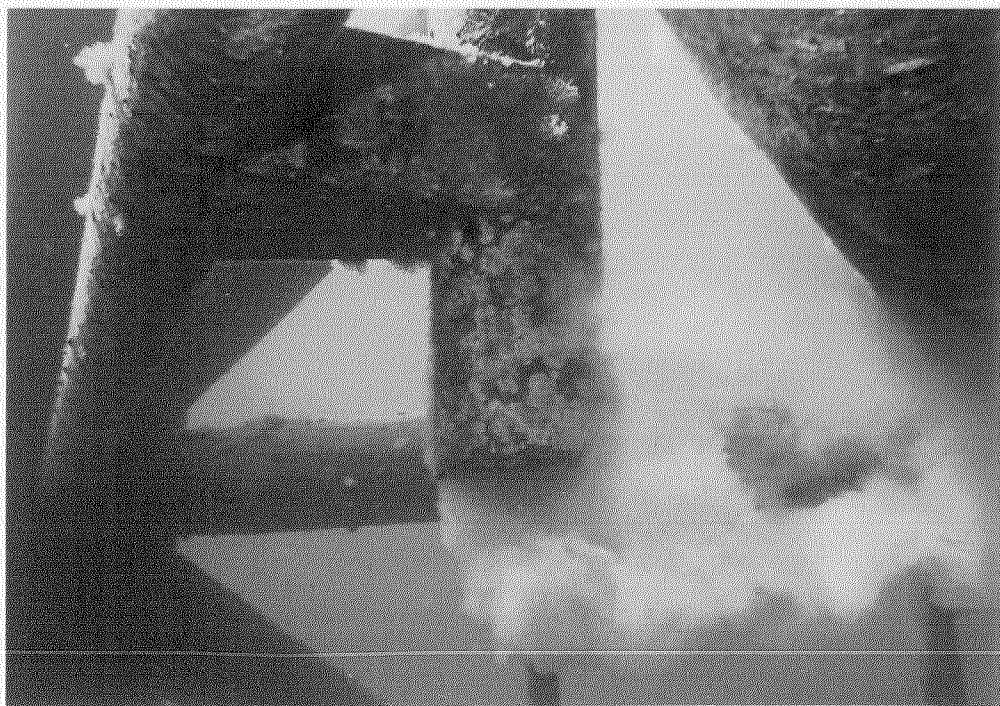
Mud discharge contacting surface near platform.

HI-A595-D



View of previous mud discharge from underwater. Photo taken at 2m water depth.

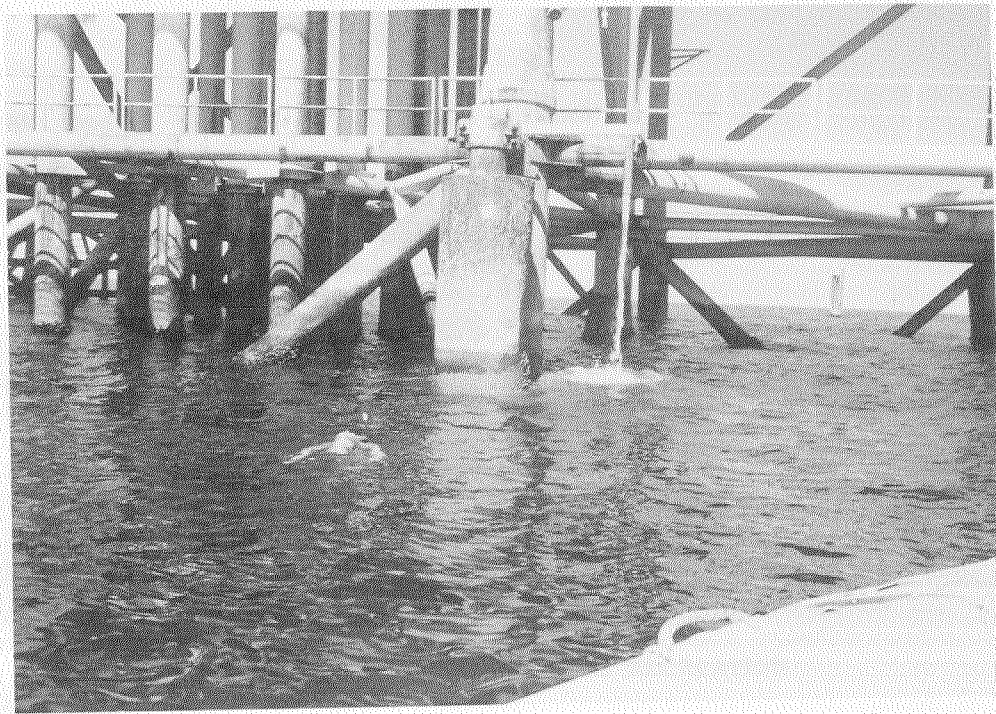
HI-A595-D



Small subsurface mud discharge. Photo taken at 2m water depth.

HI-A595-D

PRODUCED WATER DISCHARGE



Produced water discharge just above surface.

GA-296-B

