

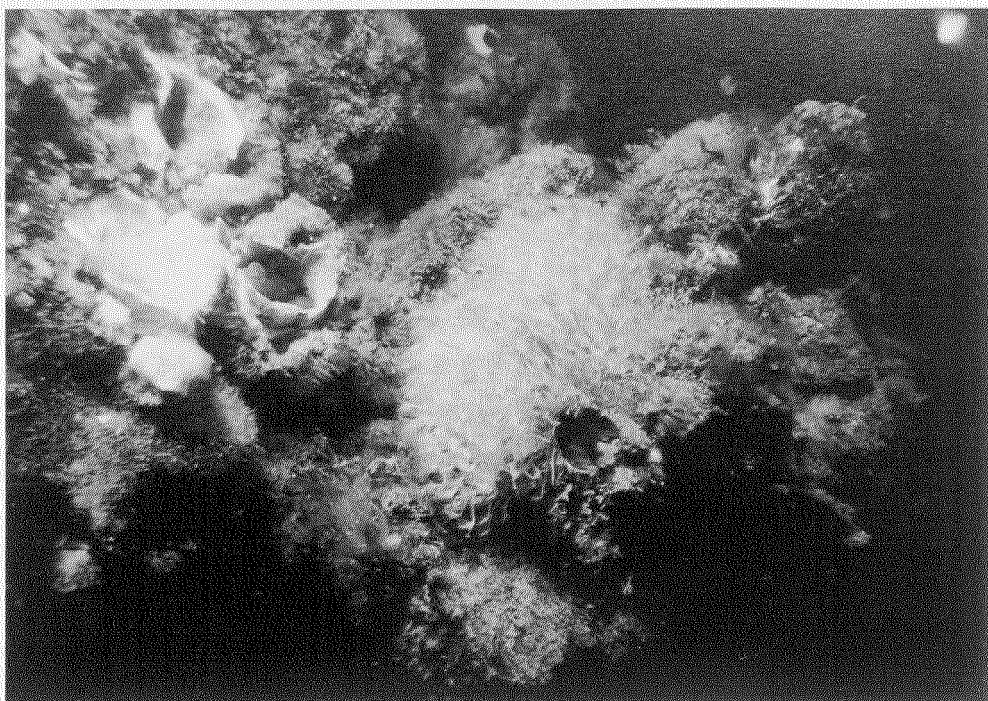
Algal mat primarily, *Derbesia*. Photo taken at 1m water depth.

ST-128A



Filamentous green algae on barnacle shell. Primarily *Enteromorpha* sp. and *Cladophora* sp. Photo taken at 1m water depth.

WC-333-A



Dense stalks of hydroid *Tubularia crocea* (February).
Photo taken at 2m water depth.

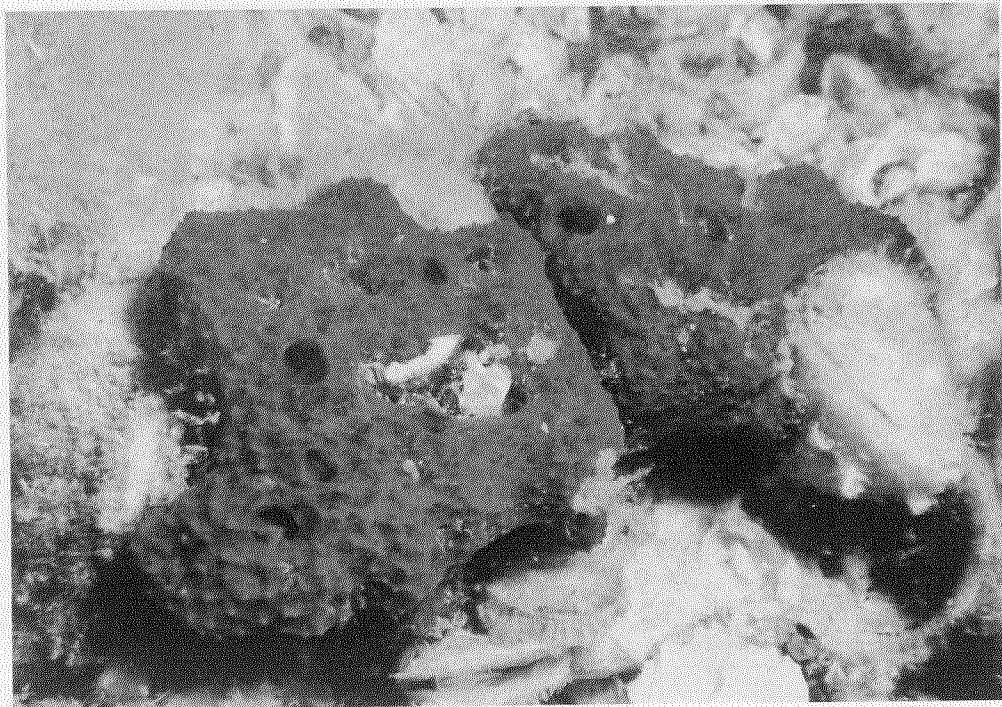
GA-296-B



Unidentified feather hydroid near surface. Photo taken at 1m
water depth.

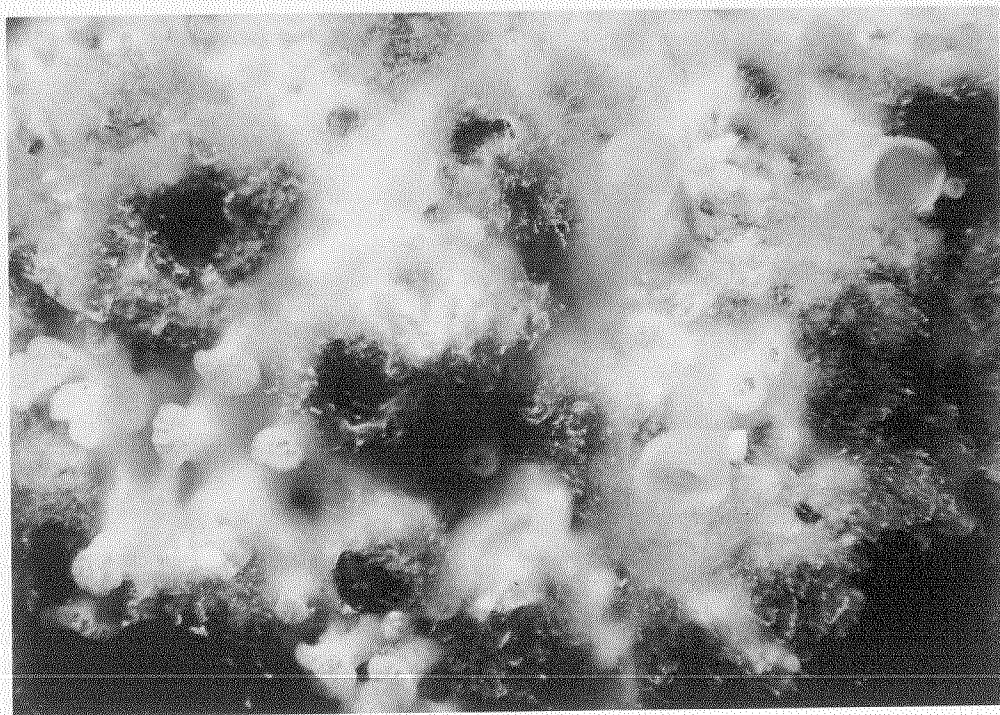
HI-A595-D

SPONGES



Massive sponge, probably *Ircinia* sp. Photo taken at 5m water depth.

GA-296-B



Unidentified encrusting yellow sponge with filamentous green algae. Photo taken at 3m water depth.

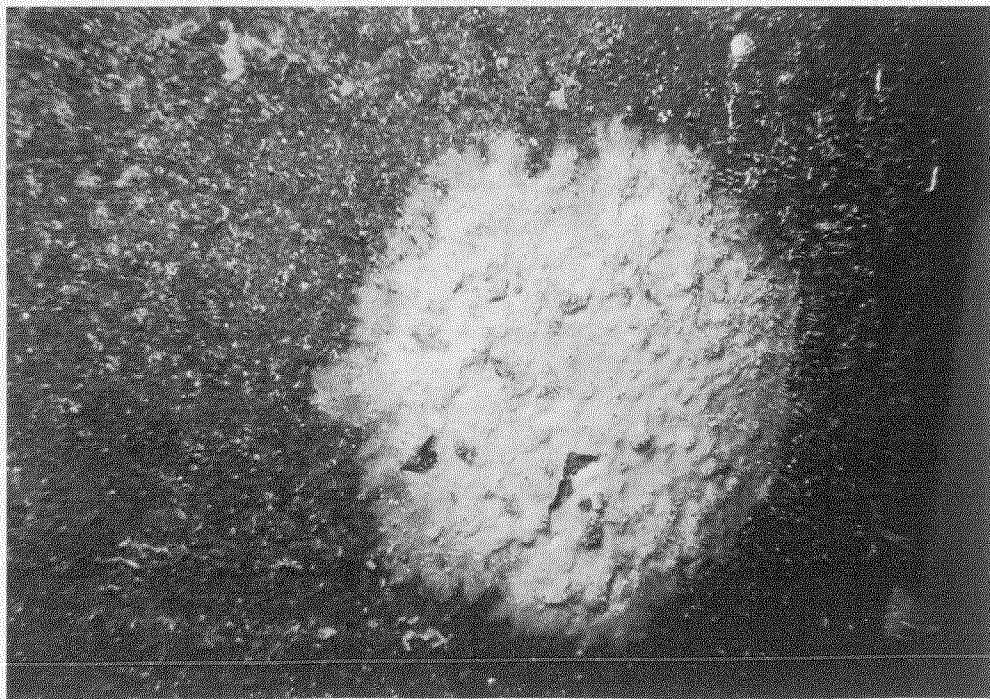
SPI-1048L

SPONGES



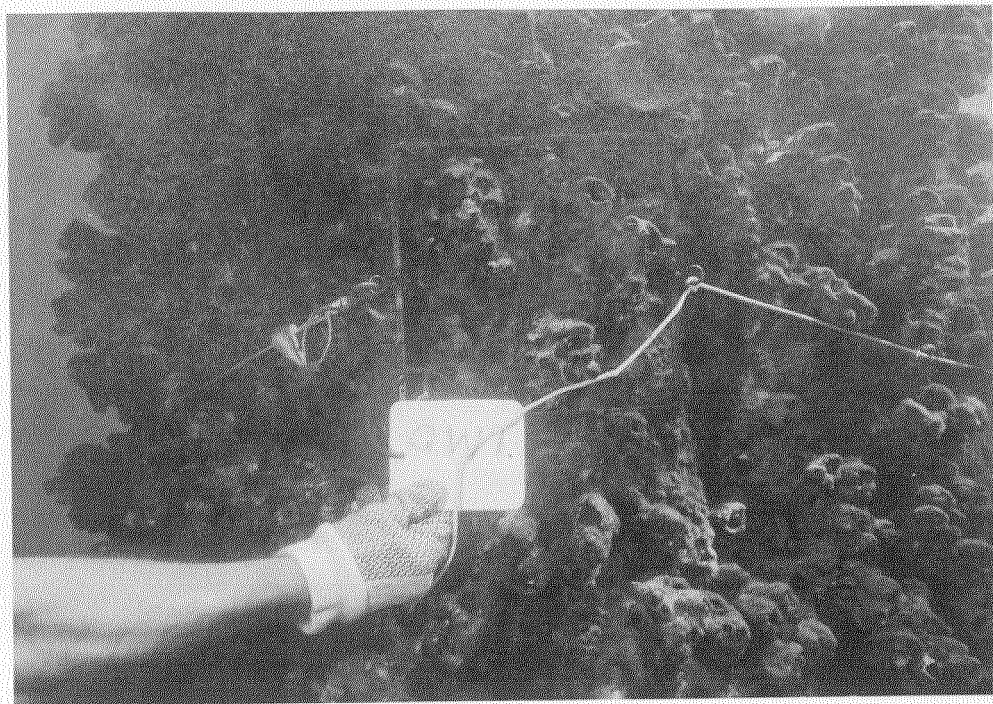
Unidentified encrusting orange sponge on oysters. Photo taken at 5m water depth.

GA-296-B



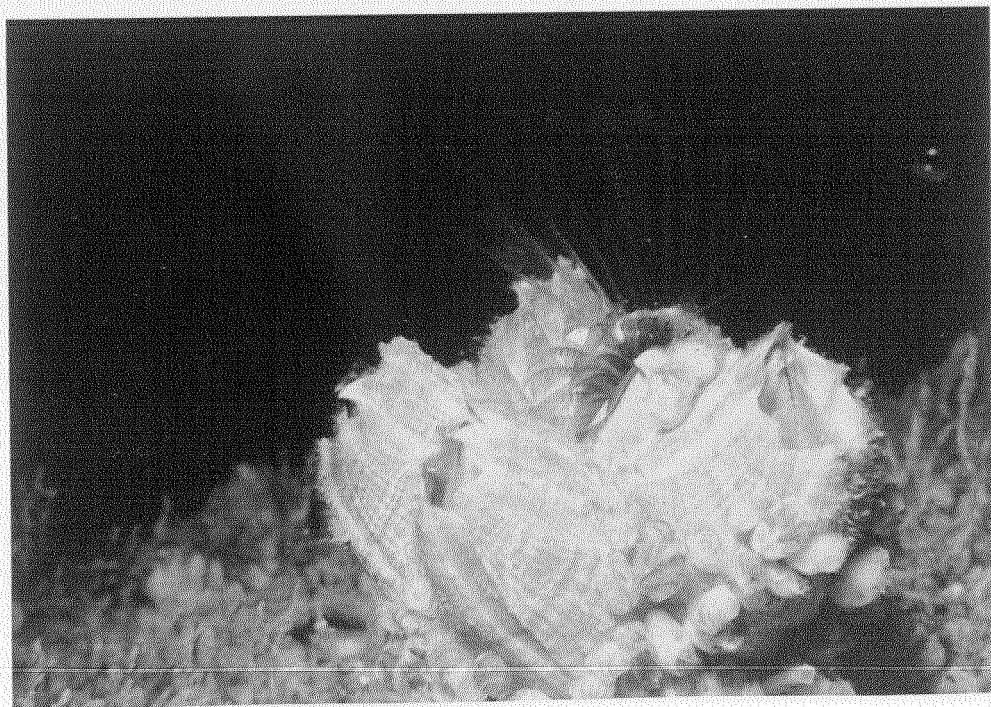
Unidentified encrusting purple sponge on vertical leg. Photo taken at 10m water depth.

HI-A595-D



High relief community of primarily *Balanus tintinnabulum* barnacle clusters. Photo taken at 1m water depth.

GA-296-B



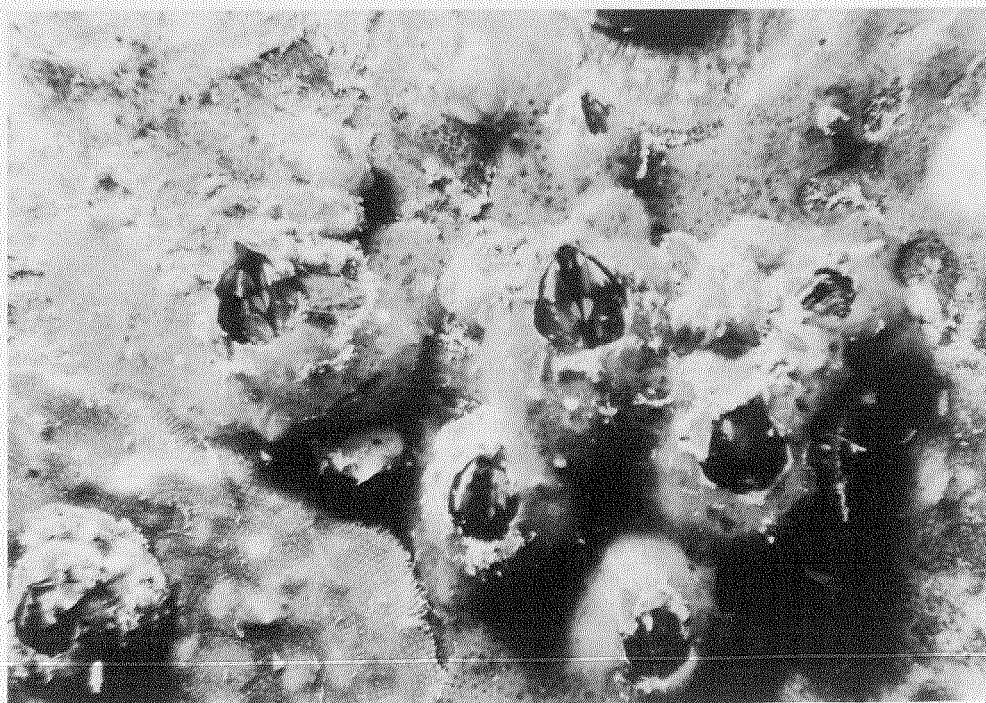
Cluster of *Balanus tintinnabulum* barnacles with legs extended for feeding. Photo taken at 2m water depth.

NPI-A42-A



The acorn barnacle *Balanus amphitrite niveus*. Photo taken at 5m water depth.

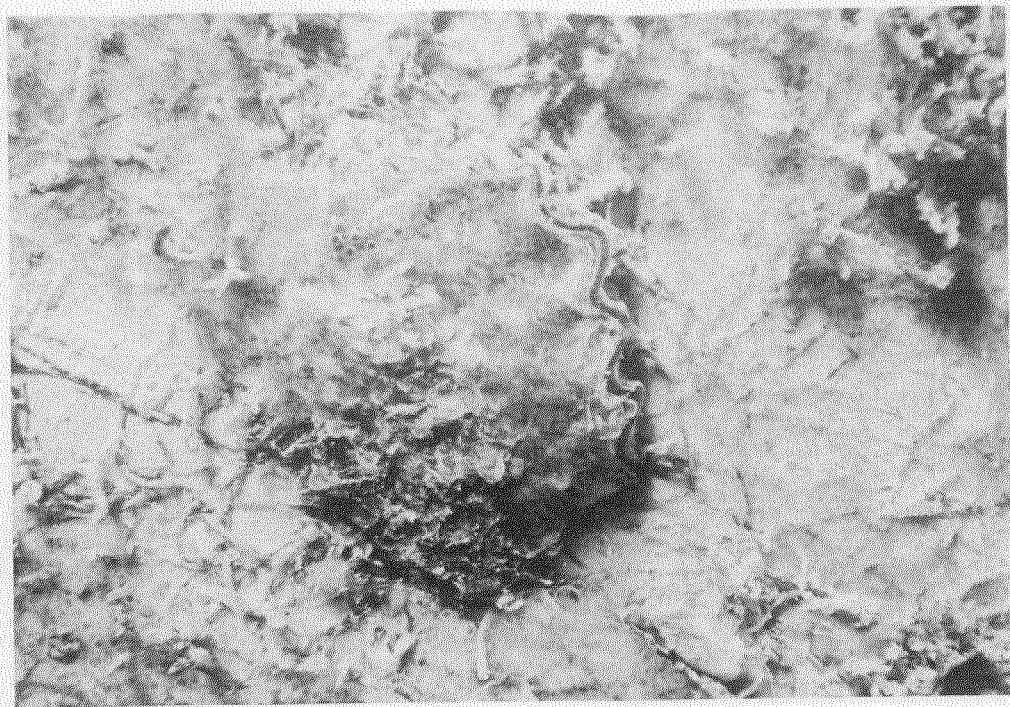
WC-333-A



Sparse *Balanus* barnacles on bluewater platform. Photo taken at 2m water depth.

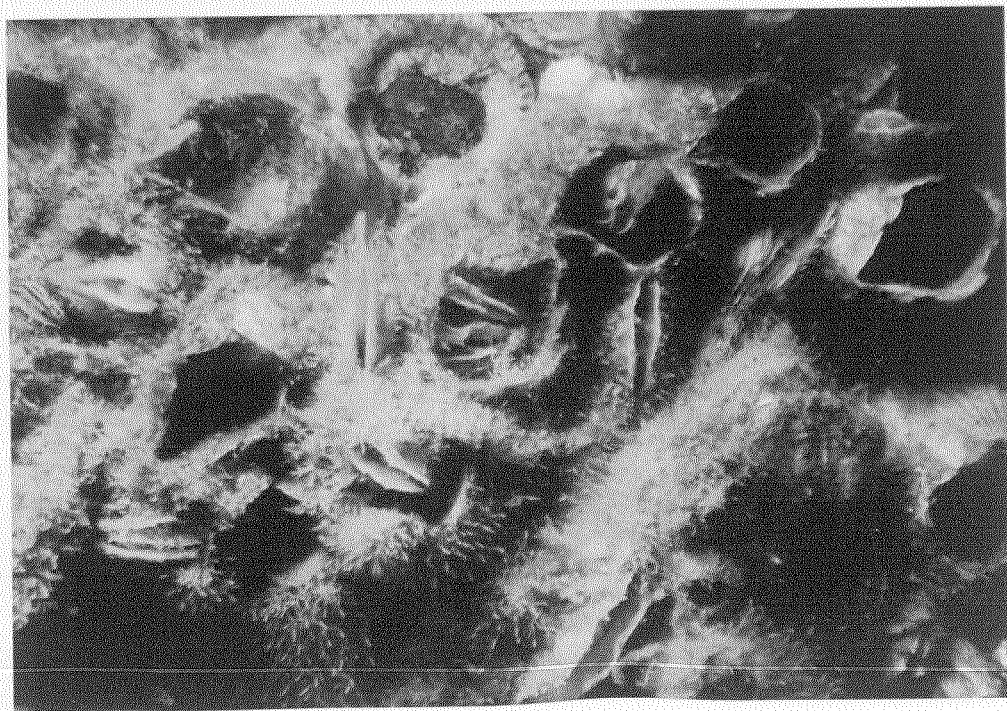
NPI-A42-A

BIVALVES



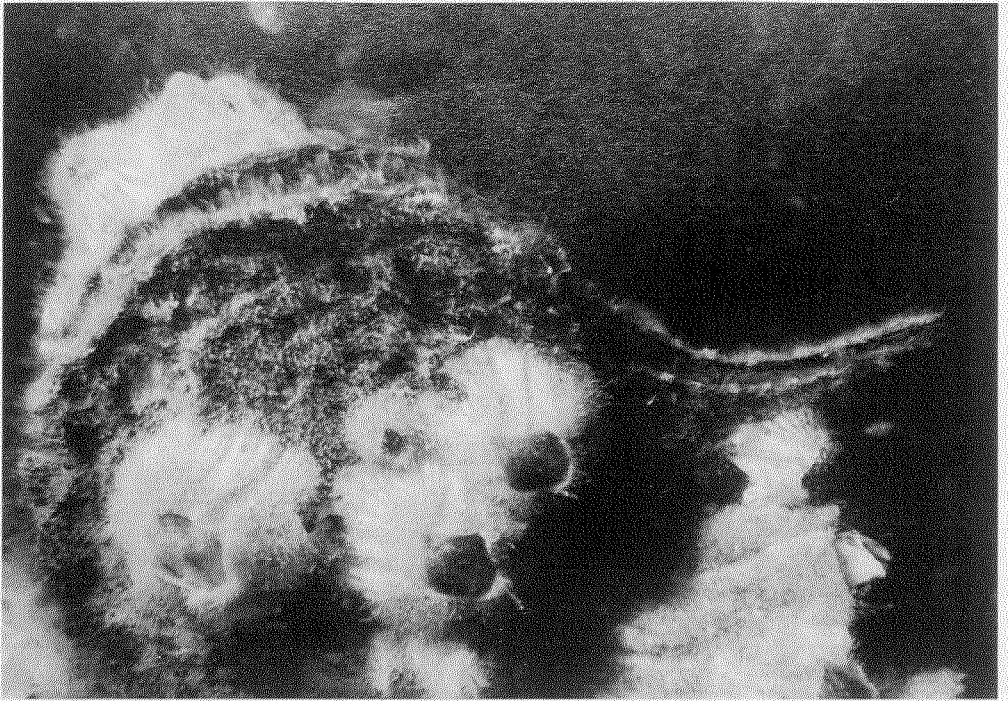
Small oyster, probably *Lopha frons*. Photo taken at 10m water depth.

NPI-A42-A



Tree oysters, *Isognomon bicolor* between *Balanus* barnacles. Photo taken at 1m water depth.

GA-296-B



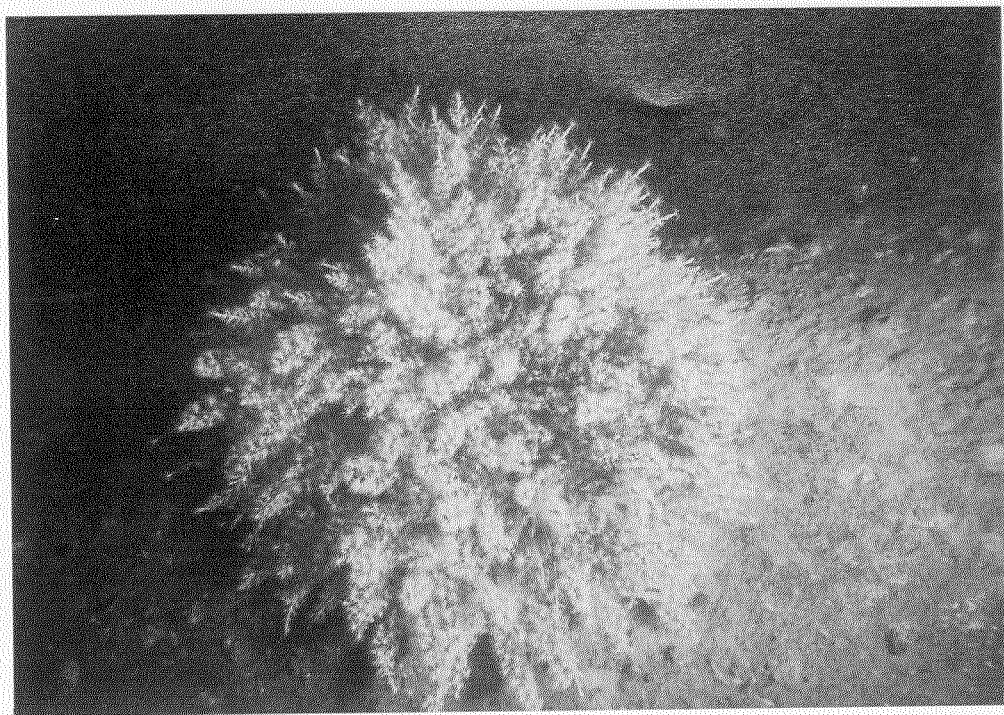
Atlantic winged oyster, *Pteria colymbus*, encrusted with *Balanus* barnacles. Photo taken at 5m water depth.

GA-296-B



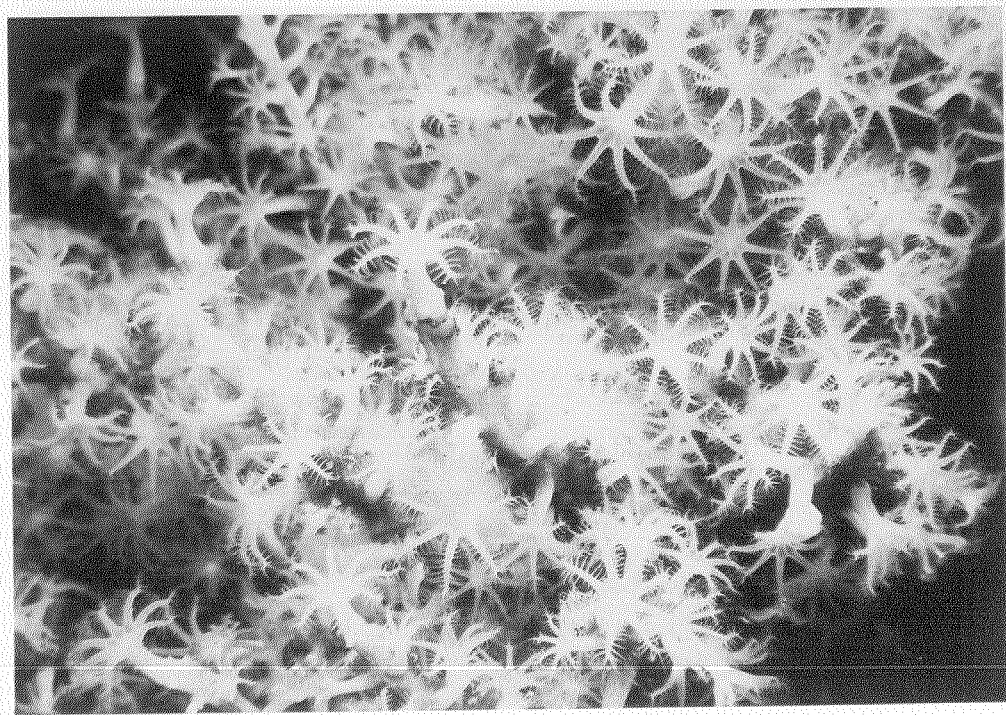
Pen shells, *Pinna carnea*. Photo taken at 1m water depth.

HI-A595-D



Large colony of *Teleso riisei* on horizontal cross member. Photo taken at 18m water depth.

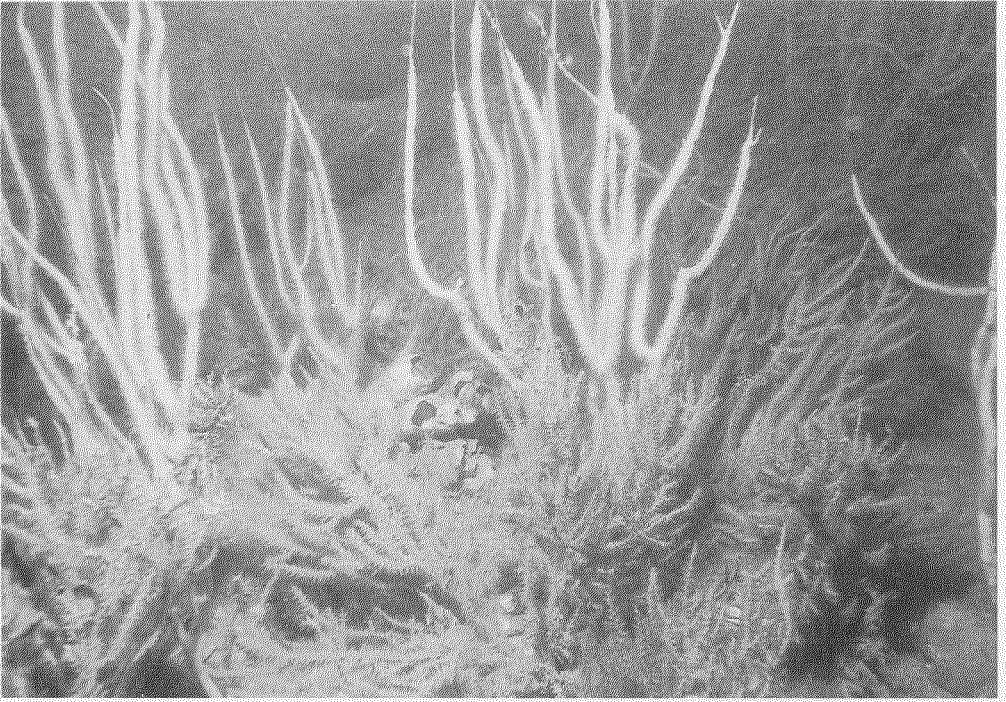
SPI-1048L



Close-up of *Teleso riisei*. Photo taken at 18m water depth.

SPI-1048L

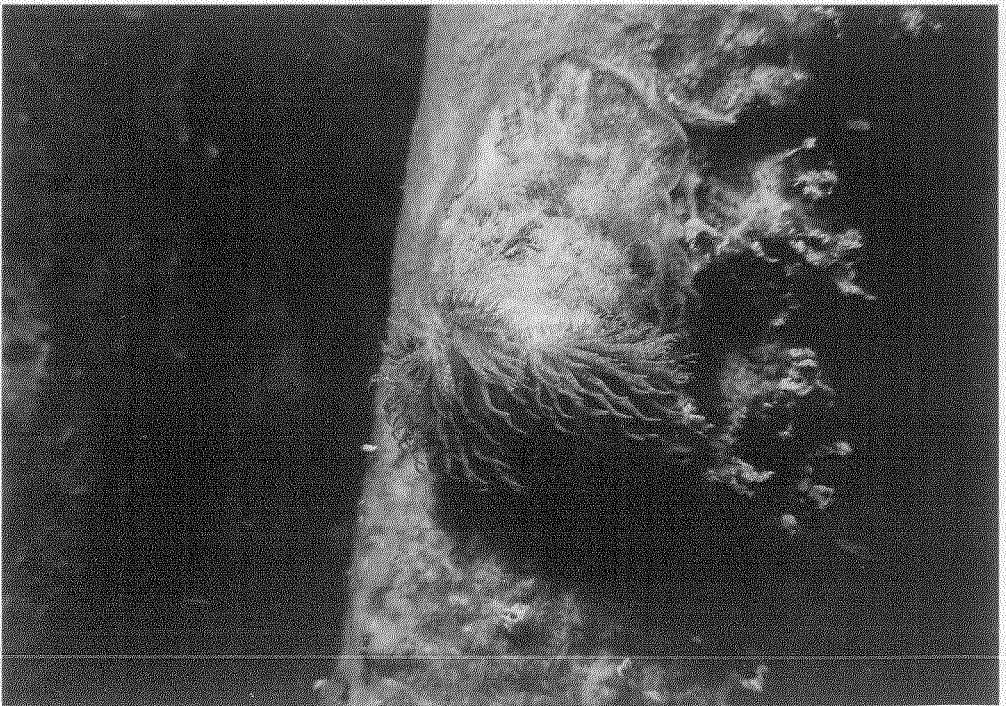
OCTOCORALS



Two species of gorgonian octocoral *Leptogorgia virgulata* and the smaller red *Lophogorgia hebes*. Photo taken at 18m water depth.

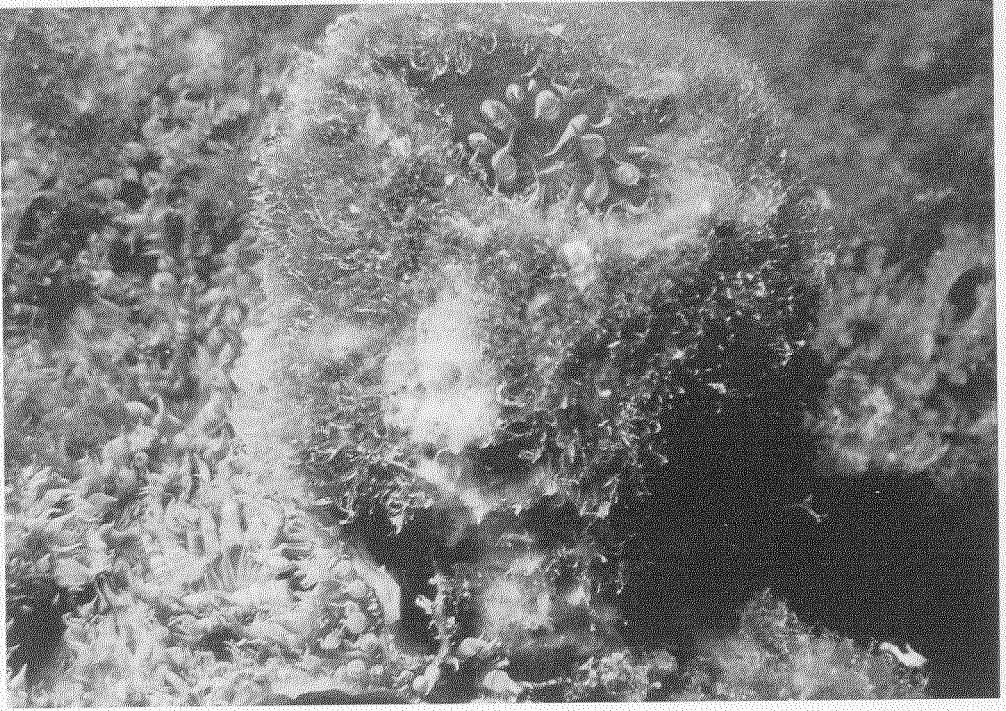
SPI-1048L

ANEMONES



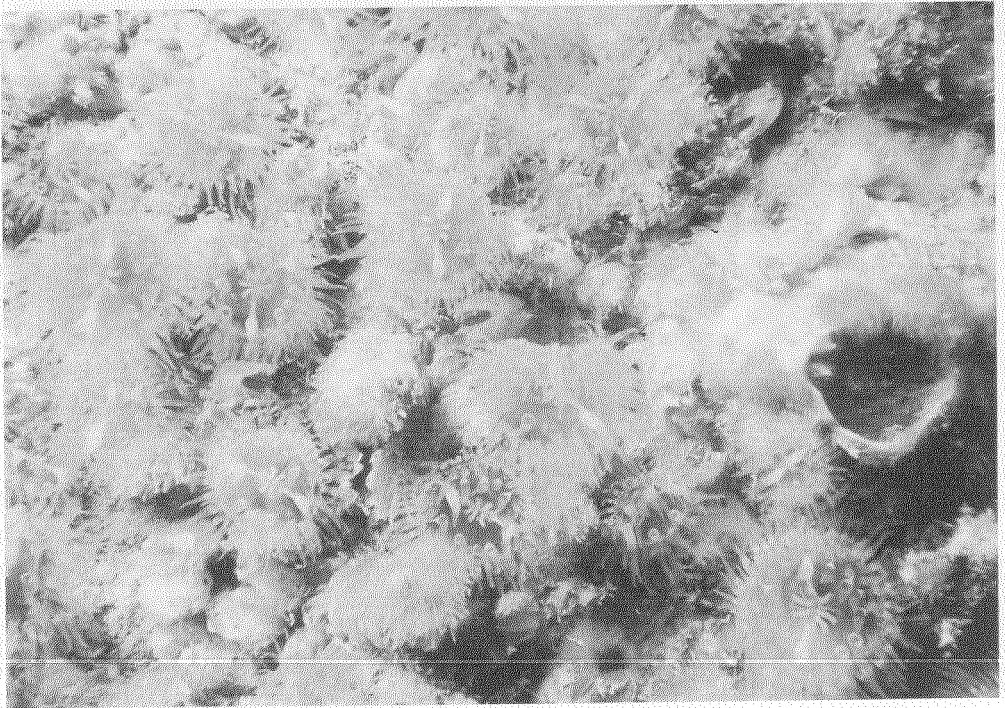
Unidentified pair of anemones on vertical leg. Photo taken at 10m water depth.

NPI-A42-A



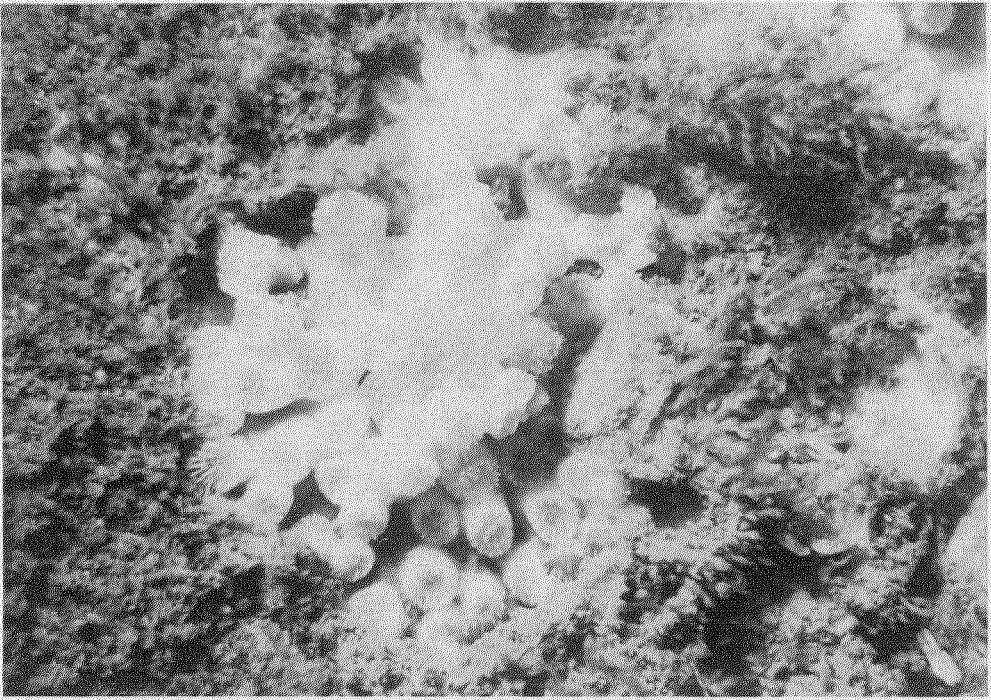
Unidentified anemones in and around dead barnacle shell. Photo taken at 9m water depth.

SPI-1048L



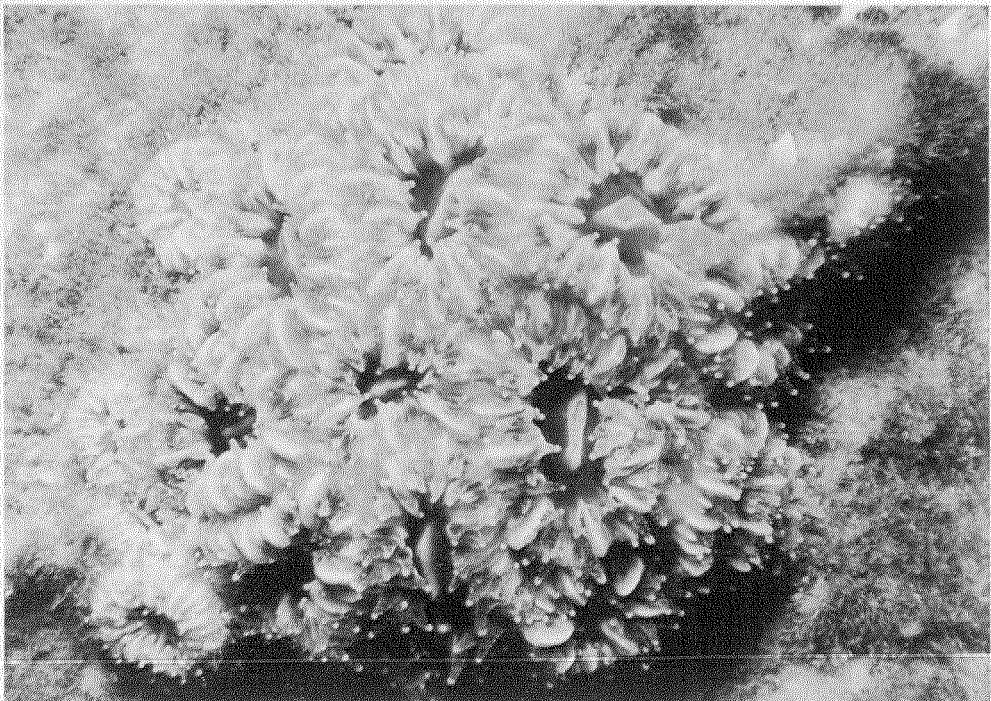
Group of unidentified actinarian anemones. Photo taken at 2m water depth.

NPI-A42-A



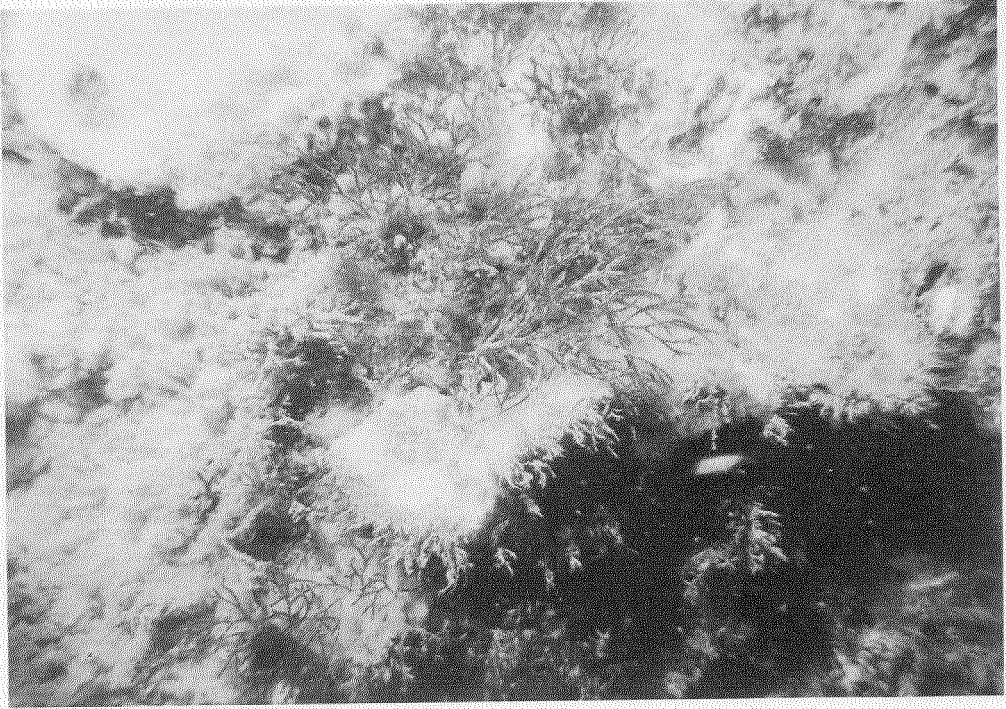
Ivory bush coral, *Oculina diffusa*, near bottom on horizontal cross members. Photo taken at 21m water depth.

GA-296-B



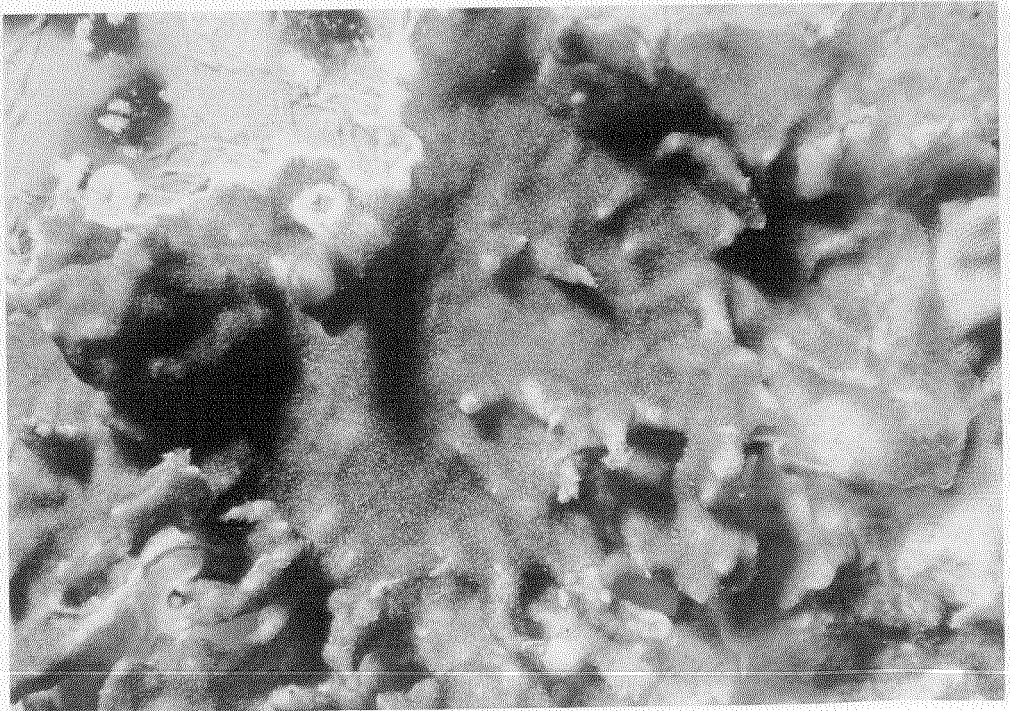
Phyllangia americana on vertical leg. Photo taken at 20m water depth.

GA-296-B



Branching bryozoan, *Bugula neritina*. Photo taken at 12m water depth.

MU-749L-1



Unidentified red encrusting bryozoan. Photo taken at 2m water depth.

NPI-A42-A



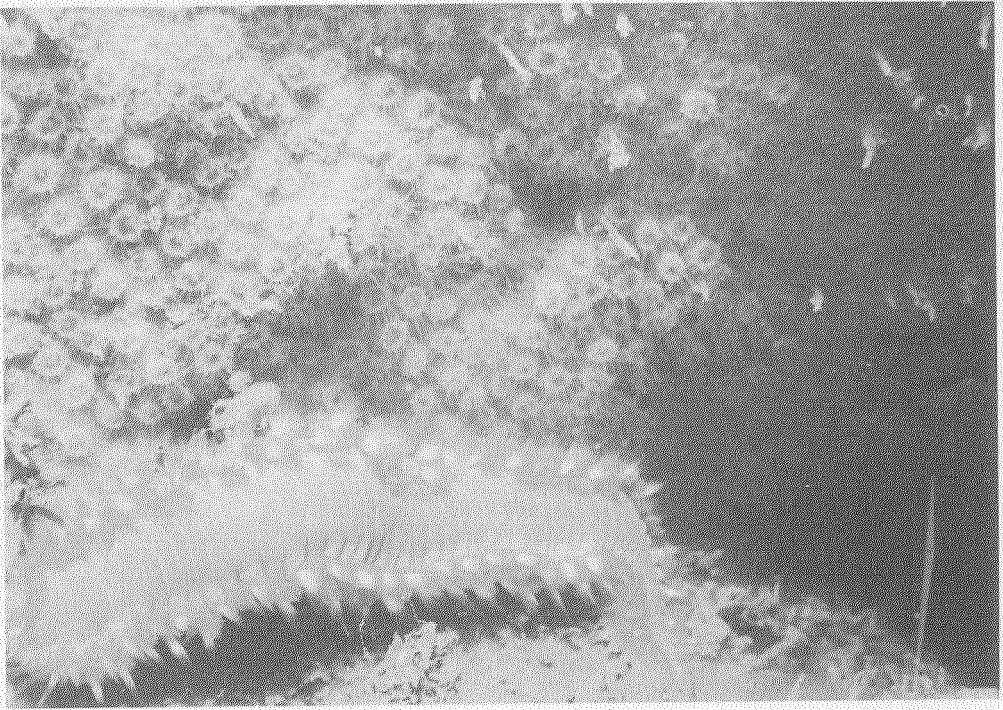
Unidentified foliaceous bryozoan. Photo taken at 1m water depth.

HI-A595-D



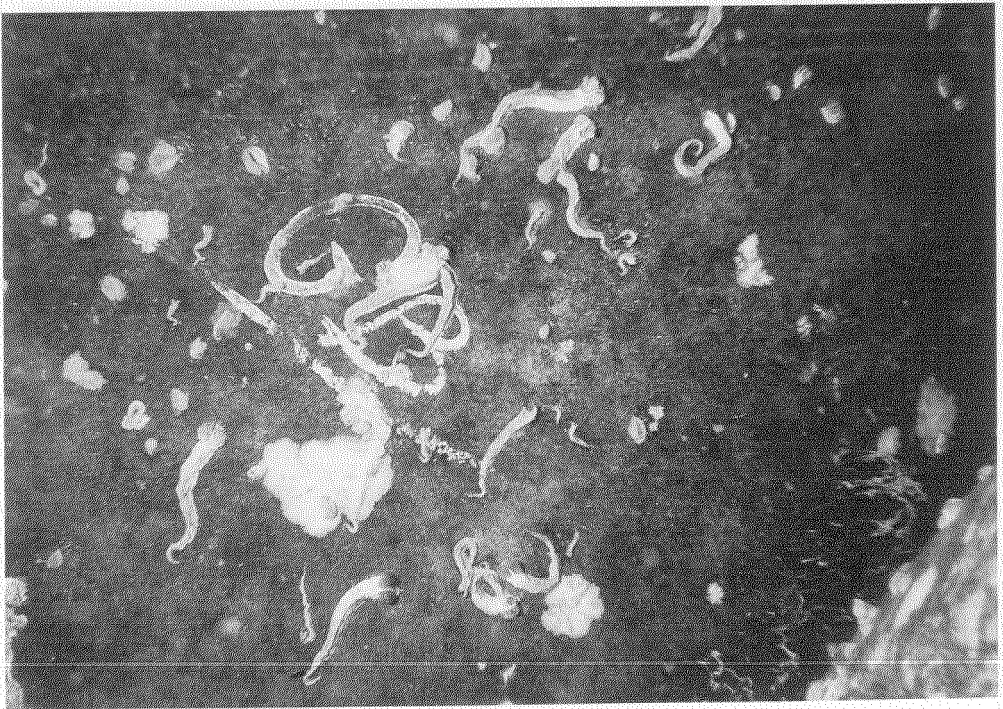
Foliaceous bryozoan with drill cuttings deposited on surface.
Photo taken at 11m water depth.

NPI-A42-A



Fireworm, *Hermodice carunculata*, on colonial anemones. Photo taken at 9m water depth.

ST-128A



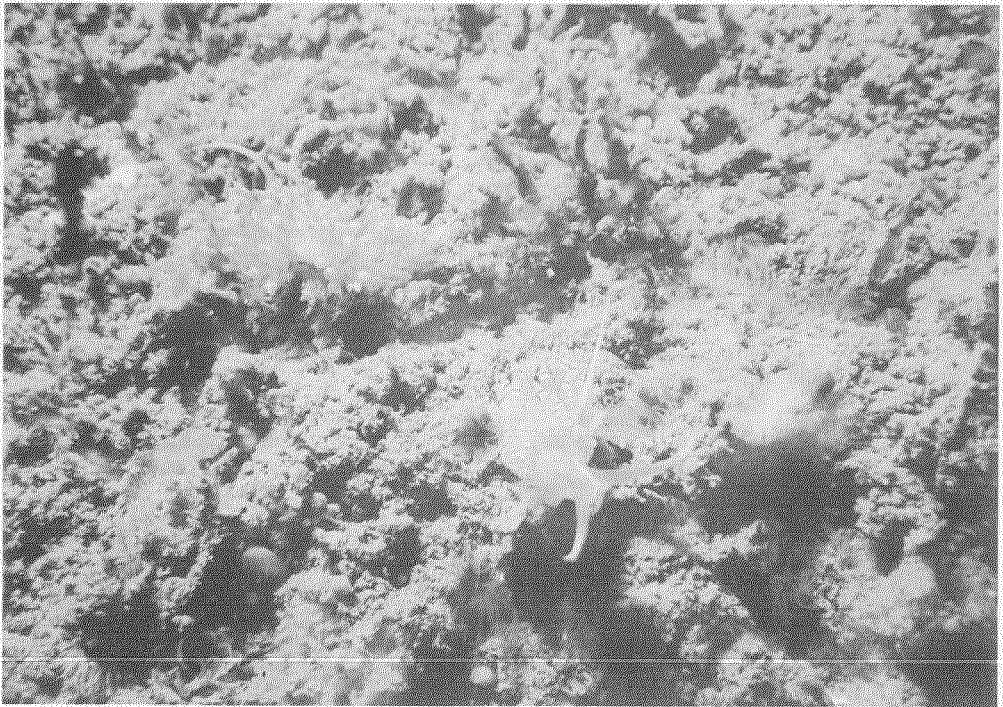
Feather duster worms and tubes, *Spirobranchus giganteus*. Photo taken at 20m water depth. (Non-motile but common polychaete)

EHI-334-B



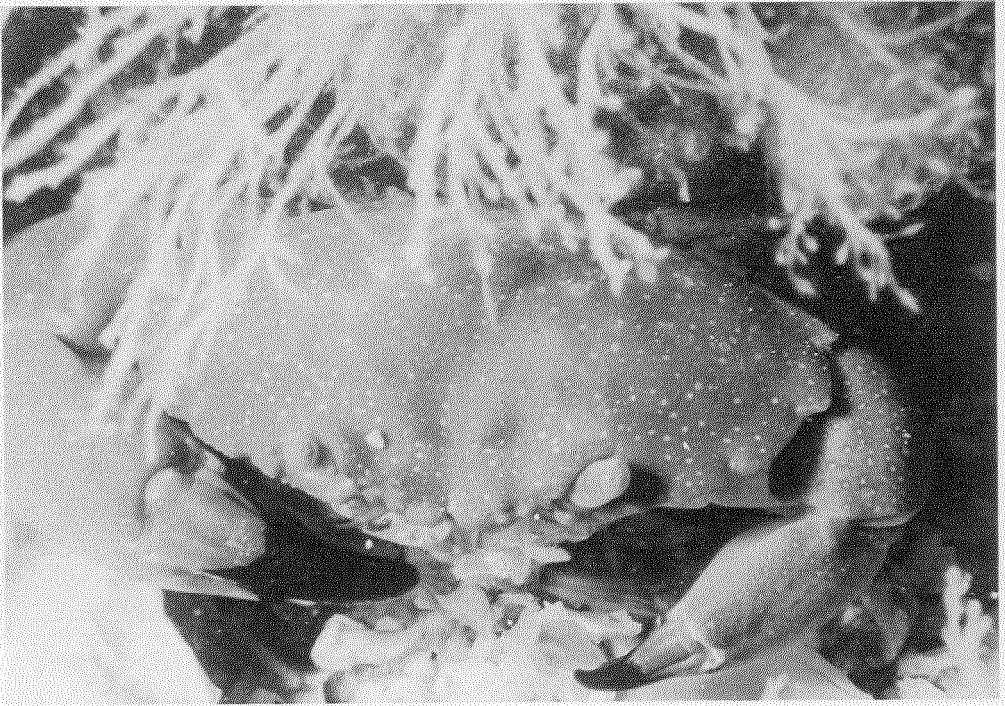
Rock shell, *Thais haemastoma*. Photo taken at 2m water depth.

WC-333-A



Unidentified nudibranchs. LGL file photo.

ST-128A



Stone crab, *Menippe mercenaria*. Photo taken at 6m water depth.

GA-296-B



Swimming crab, probably *Portunus ordwayi*. Photo taken at 9m water depth.

HI-A595-D