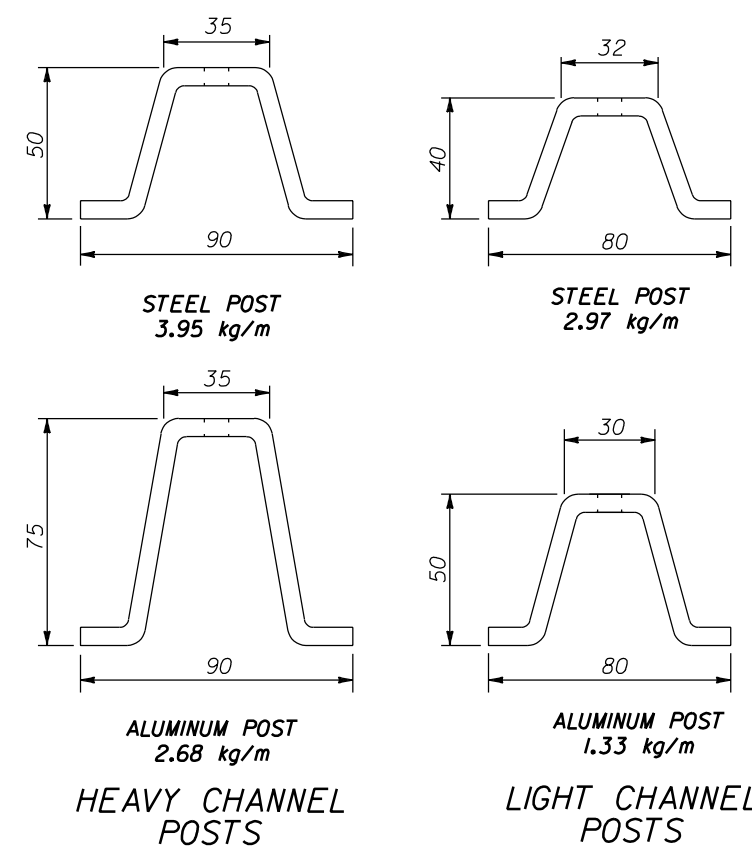
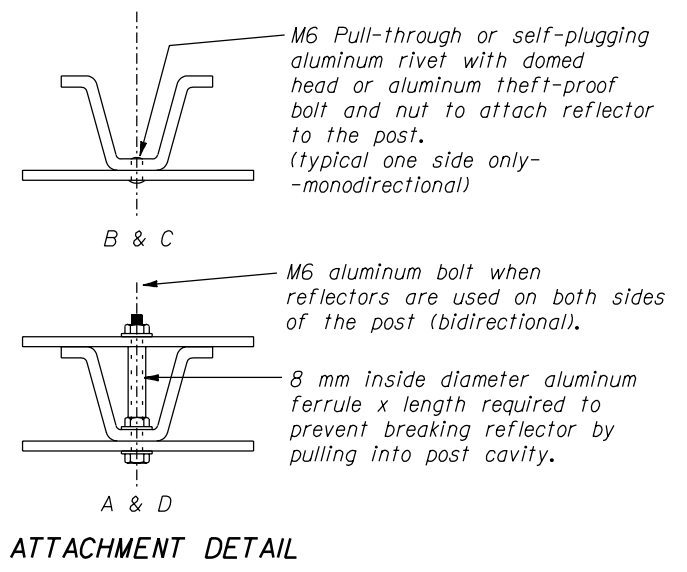


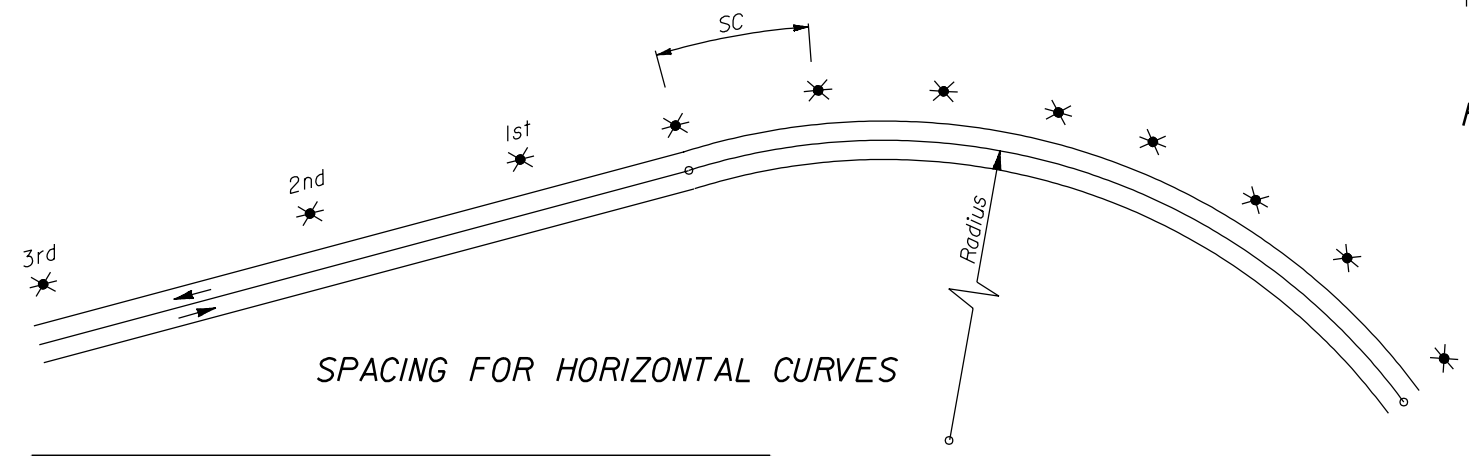
REFLECTOR DETAILS

DELINEATION MARKER REFLECTOR		
TYPE	COLOR OF REFLECTOR	REFLECTORIZED
A	White	Front & Rear
B	White	Front
C	Yellow	Front
D	Yellow	Front & Rear



NOTE:

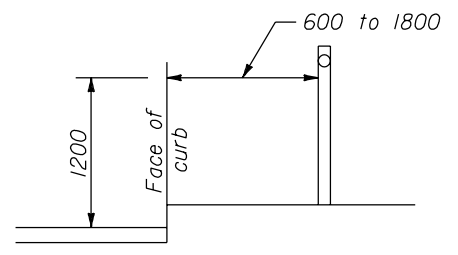
- Dimensions not labeled are in millimeters.
- Vary the post spacing up to 1/8 of the spacing to clear driveways, cross roads, intersections or ramps. Eliminate the post if the variation is exceeded.
- Dimensions of channel posts shown indicate general design only and may vary slightly among the manufacturers.
- Rectangular 75 x 150 mm reflectors may be used in lieu of double disk if required.
- Offset delineators 600 mm unless otherwise shown.
- Delineator reflector colors shall be as shown on the plans.
- Spacing on tangents should be 150 m±. Maximum spacing is 160 m.
- When the contract does not provide for the construction of the ultimate pavement, allow for the thickness of base and pavement to be placed later when establishing the elevation of the traffic delineators.
- On two way roads, stagger markers on opposite sides of the road.
- Furnish hardware in the metric sizes shown. Equivalent imperial sizes may be used when metric sizes are not available.



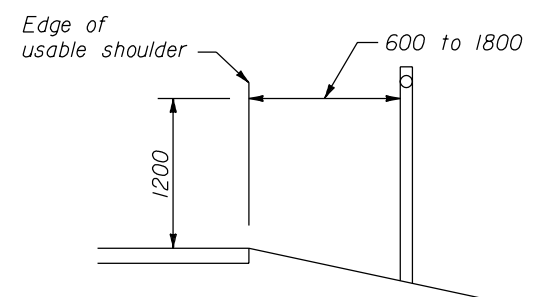
SPACING FOR HORIZONTAL CURVES

RADIUS OF CURVE IN METERS	HORIZONTAL CURVES			
	SPACING ON EACH SIDE OF ROADWAY IN METERS			
	ON CURVE *	IN ADVANCE OF & BEYOND CURVE		
		1st SPACE	2nd SPACE	3rd SPACE
3000	90	90	90	90
1500	64	90	90	90
1200	57	90	90	90
900	49	90	90	90
600	40	80	90	90
300	28	56	84	90
270	26	52	78	90
240	25	50	75	90
210	23	46	69	90
180	22	44	66	90
150	19	38	57	90
120	17	34	51	90
90	14	28	42	84
75	13	26	39	78
60	11	22	33	66
45	9	18	27	54
30	6	12	18	36
25	6	12	18	36

* Spacing for specific radii not shown may be interpolated from the formula: Spacing = 1.65 √R-15. The minimum spacing should be 6 m and not exceed 90 m.

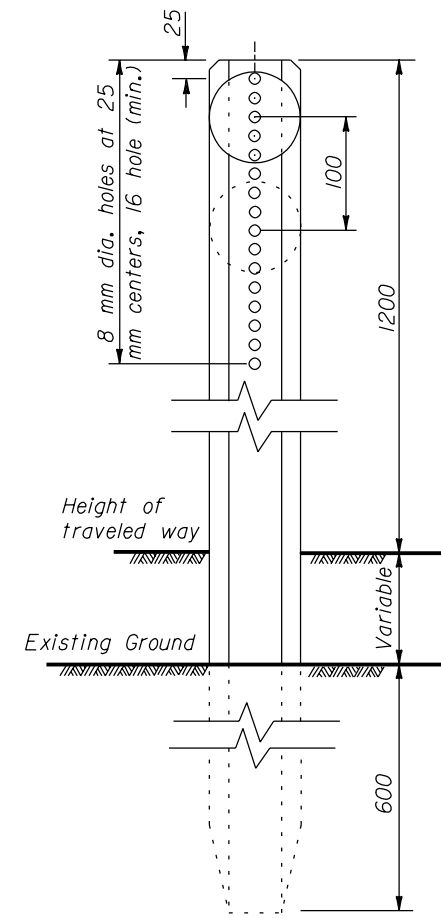


WITH CURB

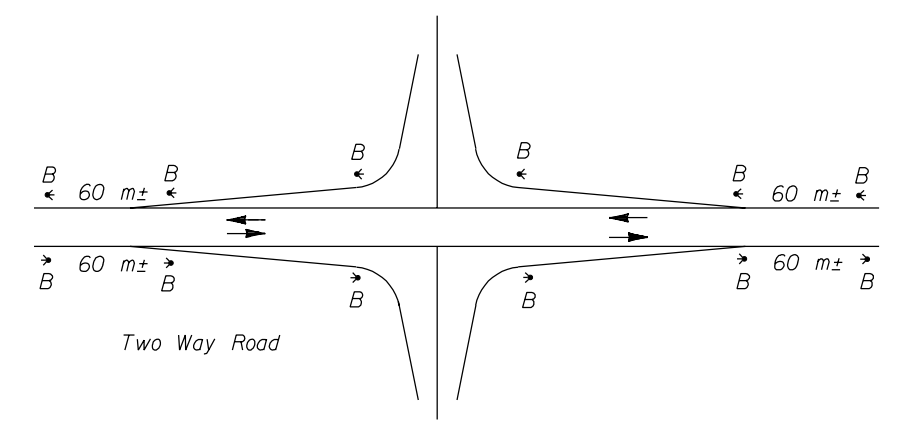


WITHOUT CURB

TYPICAL INSTALLATION



POST DETAIL



ROAD INTERSECTIONS

U.S. DEPARTMENT OF TRANSPORTATION
 FEDERAL HIGHWAY ADMINISTRATION
 WESTERN FEDERAL LANDS HIGHWAY DIVISION

METRIC DETAIL

**TRAFFIC DELINEATORS
 ALASKA PROJECTS**

DETAIL APPROVED FOR USE 3/1996

REVISIONS:

DETAIL
WM633-1

NO SCALE