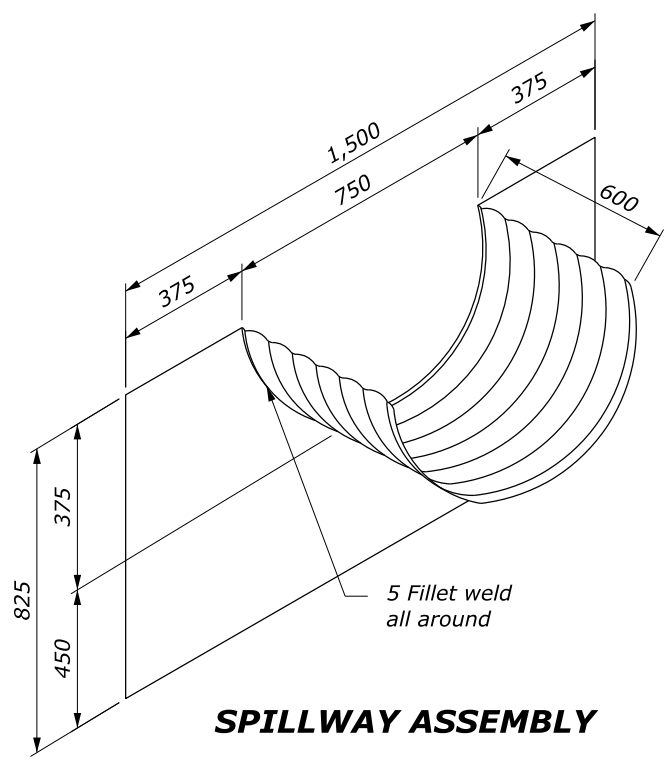
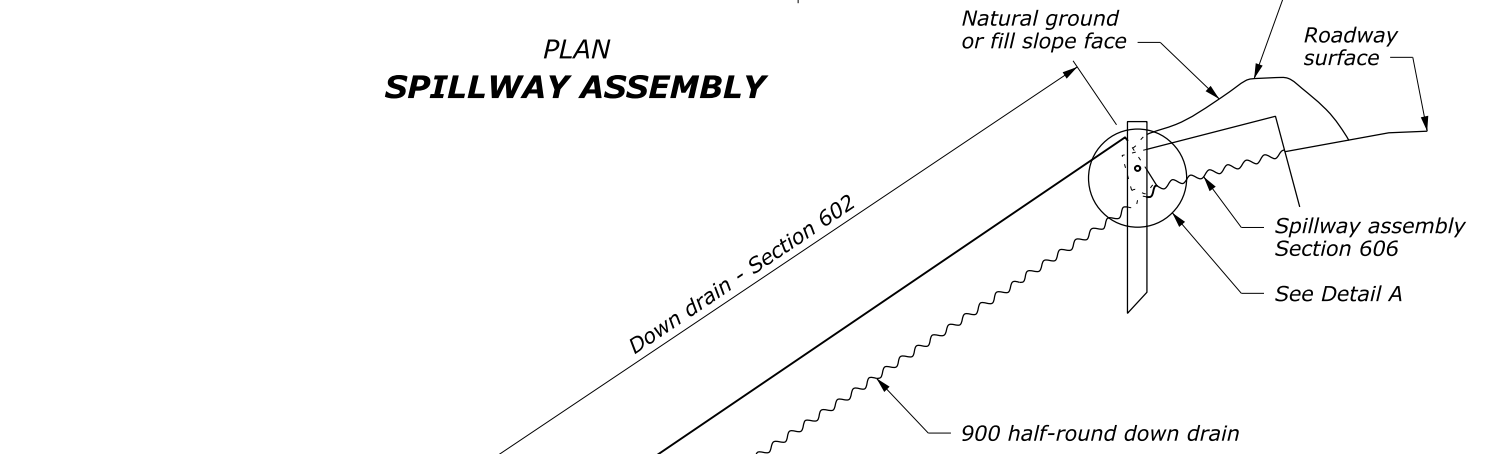


**PLAN
SPILLWAY ASSEMBLY**

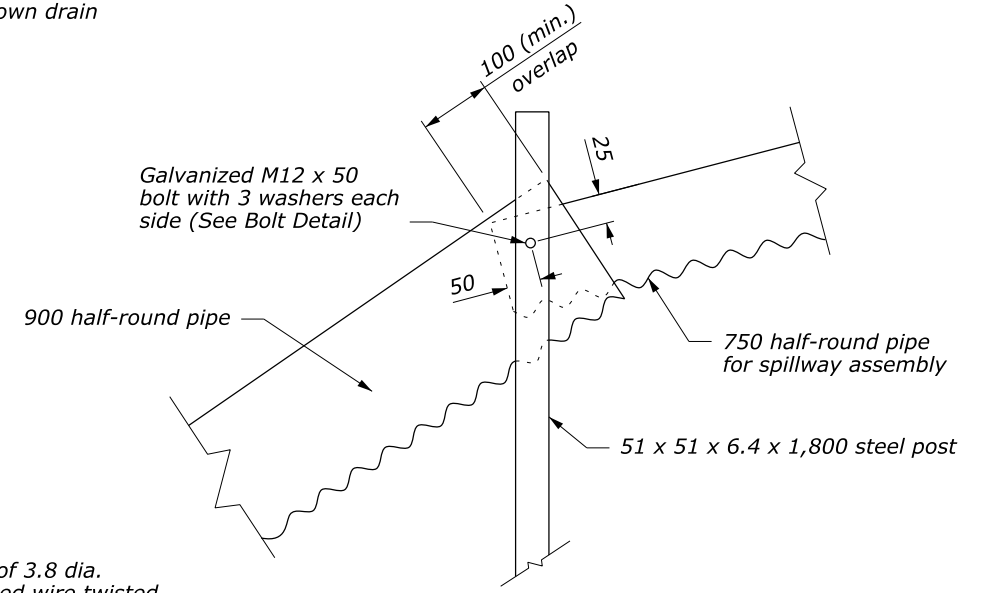
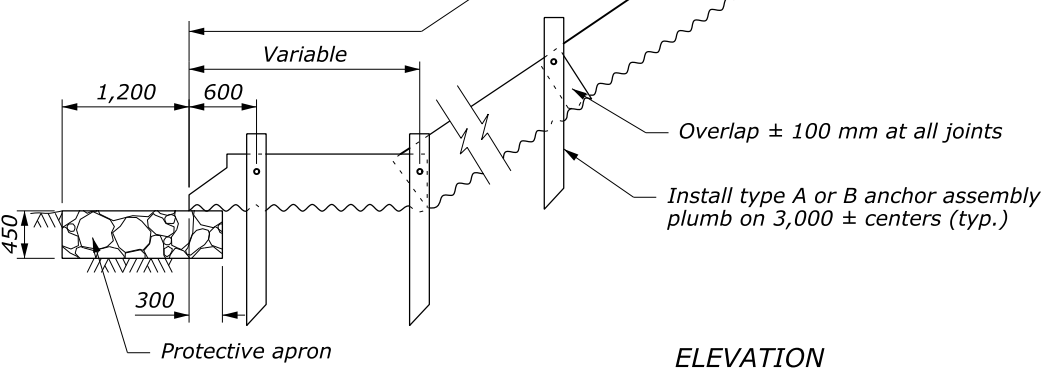


SPILLWAY ASSEMBLY

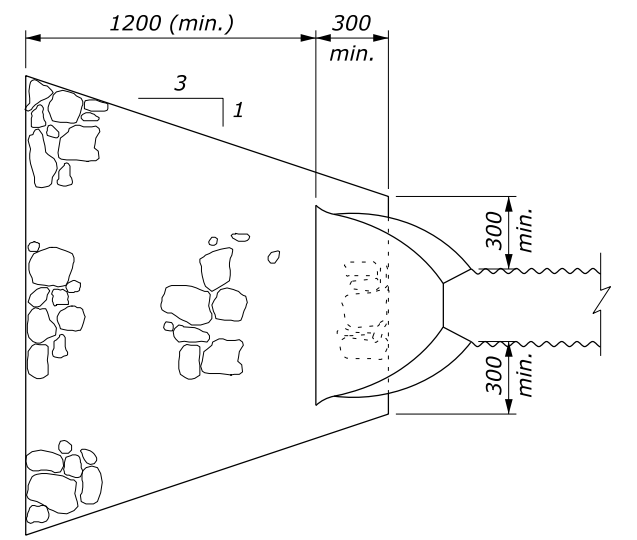
- NOTE:**
1. Fabricate spillway assembly from 1.6 mm thick galvanized steel or 1.5 mm aluminum.
 2. Place Class 2 riprap conforming to Section 251 for protective apron.
 3. Construct down drain from annular corrugated pipe, or from helically corrugated pipe with factory annular or flanged reformed ends.
 4. Approved alternate designs may be used.
 5. Furnish hardware in the metric sizes shown. Equivalent US Customary sizes may be used when metric sizes are not available.
 6. Dimensions without units are millimeters.



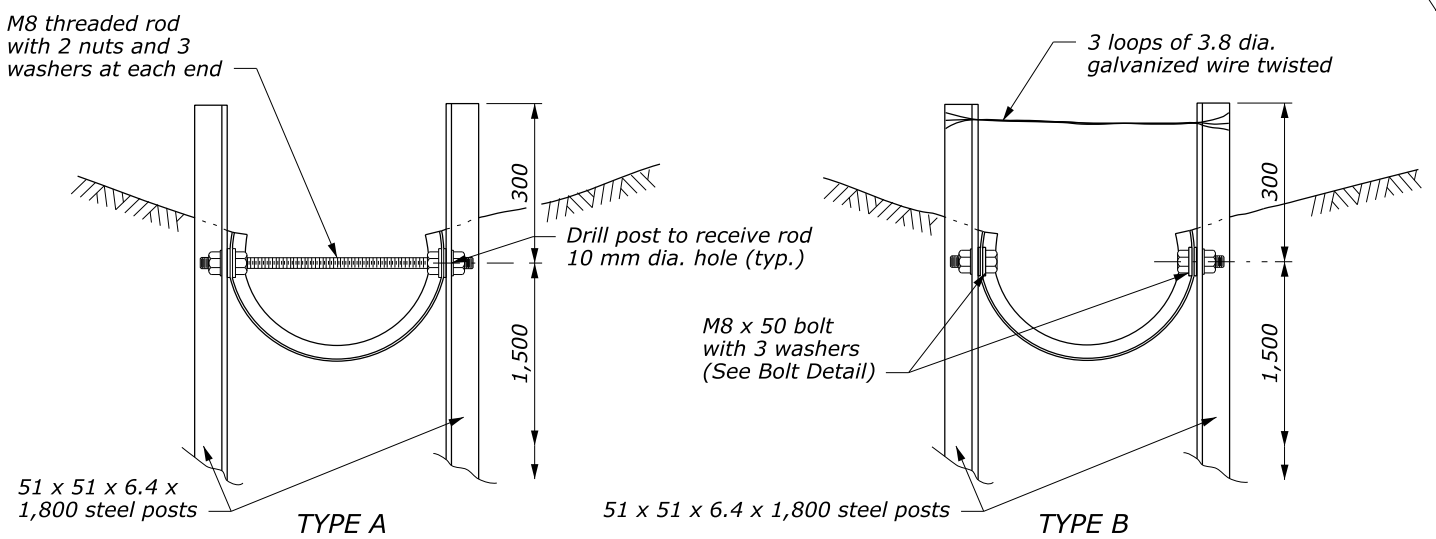
**ELEVATION
SPILLWAY ASSEMBLY AND DOWN DRAIN**



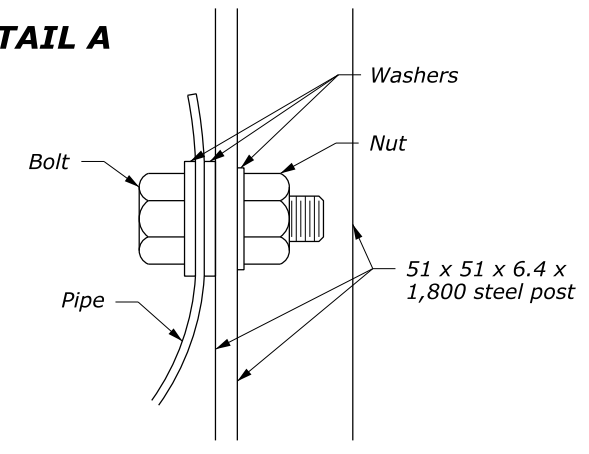
DETAIL A



**PLAN
PROTECTIVE APRON**



ANCHOR ASSEMBLY



BOLT DETAIL

NO SCALE

U.S. DEPARTMENT OF TRANSPORTATION FEDERAL HIGHWAY ADMINISTRATION WESTERN FEDERAL LANDS HIGHWAY DIVISION	
METRIC DETAIL	
SPILLWAY ASSEMBLY WITH HALF-ROUND DOWN DRAIN	
DETAIL APPROVED FOR USE 10/2009	DETAIL
REVISED:	WM606-12

30 September 2011 8:09 AM c:\myfiles\pw_production\dms43141\w60612.dgn [Metric]