

County Economic Status and Number of Distressed Areas in Appalachian Pennsylvania, Fiscal Year 2013

*Counties in **Bold** Contain Distressed Areas*

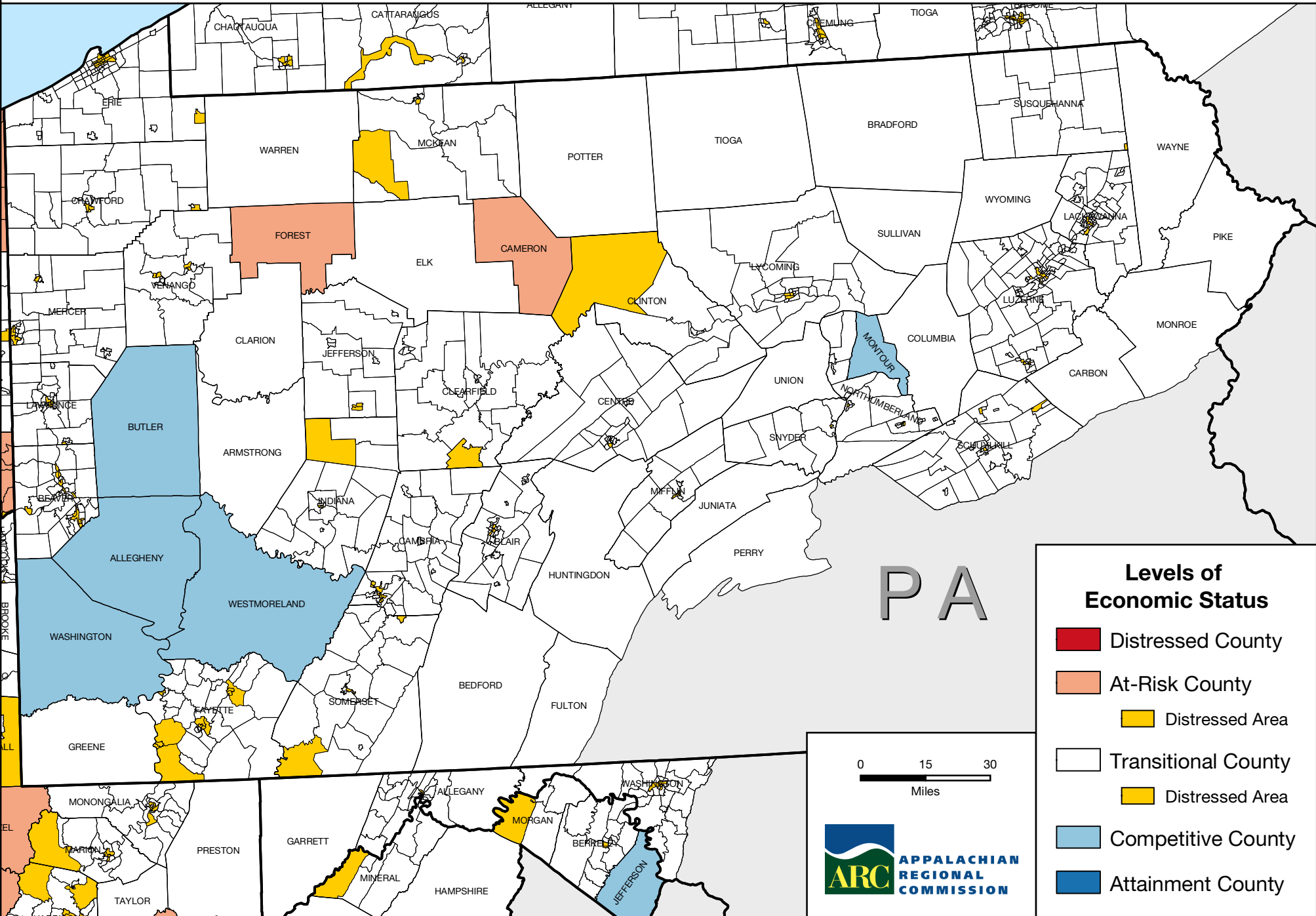
<i>County</i>	<i>Economic Status</i>	<i>Number of Distressed Areas</i>	<i>County</i>	<i>Economic Status</i>	<i>Number of Distressed Areas</i>
Allegheny	Competitive		McKean	Transitional	2
Armstrong	Transitional		Mercer	Transitional	6
Beaver	Transitional	11	Mifflin	Transitional	2
Bedford	Transitional		Monroe	Transitional	
Blair	Transitional	4	Montour	Competitive	
Bradford	Transitional		Northumberland	Transitional	2
Butler	Competitive		Perry	Transitional	
Cambria	Transitional	8	Pike	Transitional	
Cameron	At-Risk		Potter	Transitional	
Carbon	Transitional		Schuylkill	Transitional	3
Centre	Transitional	2	Snyder	Transitional	1
Clarion	Transitional		Somerset	Transitional	3
Clearfield	Transitional	1	Sullivan	Transitional	
Clinton	Transitional	1	Susquehanna	Transitional	1
Columbia	Transitional		Tioga	Transitional	
Crawford	Transitional	3	Union	Transitional	
Elk	Transitional		Venango	Transitional	3
Erie	Transitional	17	Warren	Transitional	
Fayette	Transitional	11	Washington	Competitive	
Forest	At-Risk		Wayne	Transitional	
Fulton	Transitional		Westmoreland	Competitive	
Greene	Transitional		Wyoming	Transitional	
Huntingdon	Transitional				
Indiana	Transitional	2			
Jefferson	Transitional	2			
Juniata	Transitional				
Lackawanna	Transitional	6			
Lawrence	Transitional	4			
Luzerne	Transitional	9			
Lycoming	Transitional	3			

Distressed Areas in Appalachian Pennsylvania, Fiscal Year 2013

<i>County</i>	<i>Census Tract ID Number</i>	<i>County</i>	<i>Census Tract ID Number</i>
Beaver	6011	Erie	8
Beaver	6012	Erie	9
Beaver	6013	Erie	12
Beaver	6028	Erie	13
Beaver	6035	Erie	14
Beaver	6040	Erie	15
Beaver	6041	Erie	16
Beaver	6042	Erie	17
Beaver	6045	Erie	18
Beaver	6054	Erie	19
Beaver	6057	Erie	20
Blair	1003	Erie	119
Blair	1007	Fayette	2606
Blair	1016	Fayette	2607
Blair	1019	Fayette	2608
Cambria	2	Fayette	2612
Cambria	3	Fayette	2617
Cambria	5	Fayette	2618
Cambria	6	Fayette	2619
Cambria	12	Fayette	2623
Cambria	134	Fayette	2629
Cambria	135	Fayette	2630
Cambria	136	Fayette	2631
Centre	125	Indiana	9602
Centre	128	Indiana	9611.01
Clearfield	3318	Jefferson	9512
Clinton	301	Jefferson	9513
Crawford	1111	Lackawanna	1002
Crawford	1115	Lackawanna	1003
Crawford	1116	Lackawanna	1004
Erie	1	Lackawanna	1014
Erie	4	Lackawanna	1026
Erie	5	Lackawanna	1029
Erie	6	Lawrence	4
Erie	7	Lawrence	7

<i>County</i>	<i>Census Tract ID Number</i>	<i>County</i>	<i>Census Tract ID Number</i>
Lawrence	9		
Lawrence	118		
Luzerne	2001		
Luzerne	2005		
Luzerne	2006		
Luzerne	2010		
Luzerne	2132		
Luzerne	2136		
Luzerne	2175		
Luzerne	2176		
Luzerne	2179		
Lycoming	3		
Lycoming	4		
Lycoming	8		
McKean	4202		
McKean	4211		
Mercer	301		
Mercer	303		
Mercer	309		
Mercer	321		
Mercer	332		
Mercer	334		
Mifflin	9607		
Mifflin	9608		
Northumberland	817		
Northumberland	821		
Schuylkill	6.01		
Schuylkill	19		
Schuylkill	26		
Snyder	9807.05		
Somerset	203		
Somerset	211		
Somerset	219.02		
Susquehanna	329.02		
Venango	2003		
Venango	2007		
Venango	2009		

County Economic Status and Distressed Areas in Appalachian Pennsylvania, Fiscal Year 2013



**Levels of
Economic Status**

- Distressed County
- At-Risk County
- Distressed Area
- Transitional County
- Distressed Area
- Competitive County
- Attainment County

0 15 30
Miles

ARC
APPALACHIAN
REGIONAL
COMMISSION

P A