

NPVU

(National Precipitation Verification Unit)

The NPVU became operational on 01 October 2000!

Link to [QPF Process Implementation Working Group](#)

Regularly visit the [NPVU Log](#) to find out about recent additions/changes/corrections.



QPF Verification Statistics

CBRFC & CNRFC November 2000 gridded stats - 20 December 2000
November 2000 stats - 11 December 2000 (RFC domains east of the cont. divide)

NEW: 13 December 2000 - [Comparison Plots](#)



RFC Data

RFC QPF, QPE, & FFG images - CONUS Mosaic QPF, QPE, & FFG images -
HYD bulletins and QPS products

HPC QPF [GIF](#), [VGF](#), [GRIB](#), & [GEMPAK](#) gridded files

[Western Region Follow-on QPF Assessment](#)

NPVU – QPF Verification

Questions? Comments?
Send mail to [Brett McDonald](mailto:Brett.McDonald).
Last Modified on 08 January 2001

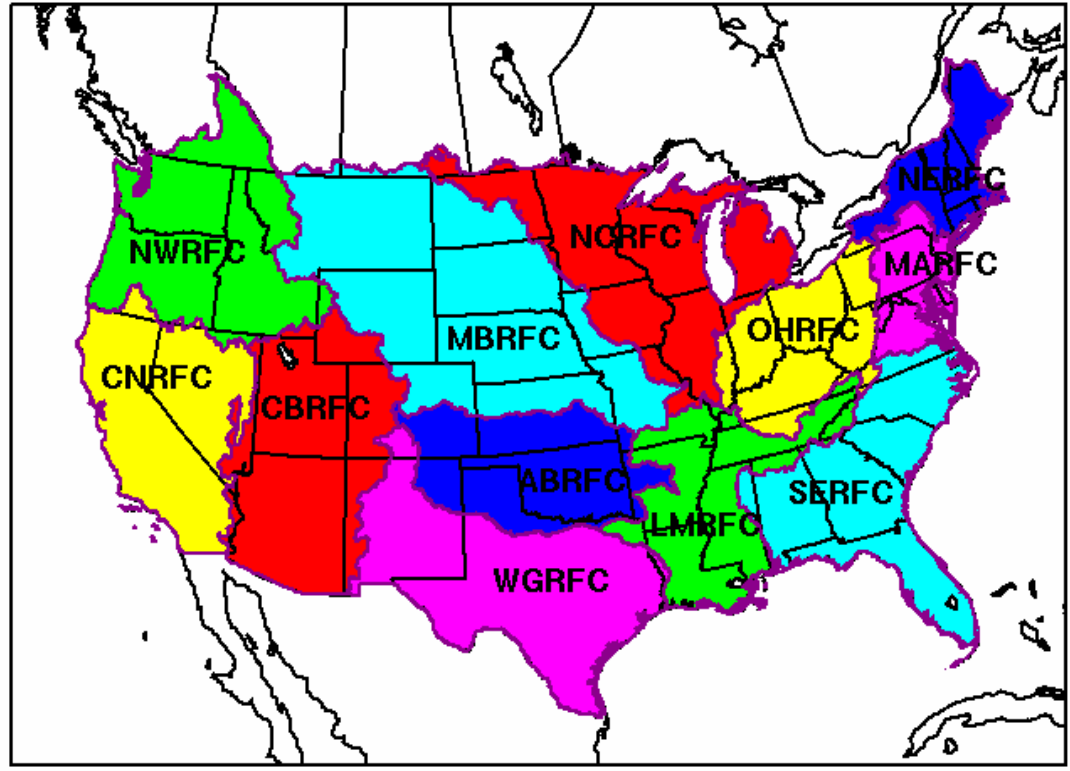
QPF Verification [Log](#) & [DataLog](#)

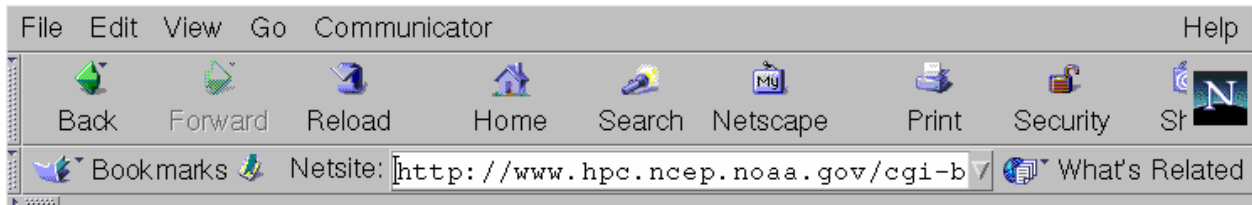
Six-panel Comparison Plots . . .

WARNING

QPF Verification Statistics for Nov & Dec 2000 may be inaccurate due to problems with the gridded precipitation analyses in frozen precipitation situations. This is particularly evident in those RFC domains in the northern part of the country.

Click on a River Forecast Center Area to access QPF verification statistics for that area.





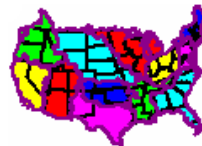
NPVU – QPF Verification – ABRFC

1)	Verification Month	December 2000 ▾
2)	QPF Verification Methodology	Grids ▾
3)	Statistics Type (Interval Type)	<input checked="" type="radio"/> Continuous <input type="radio"/> Categorical Observed & Forecast ▾

Produce the next table . . .

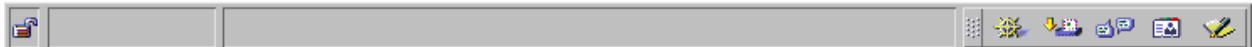
NPVU
Home Page

Questions? Comments?
Send mail to [Brett McDonald](mailto:Brett.McDonald).
Last Modified 08 January 2001



Want to select another RFC domain?

[\[CBRFC\]](#) [\[CNRFC\]](#) [\[LMRFC\]](#) [\[MARFC\]](#) [\[MBRFC\]](#) [\[NCRFC\]](#)
[\[NERFC\]](#) [\[NWRFC\]](#) [\[OHRFC\]](#) [\[SERFC\]](#) [\[WGRFC\]](#)



NPVU – QPF Verification – ABRFC – December 2000

06-Hour GRIDDED Error Statistics
(intervals based on OBSERVED & FORECAST amounts)

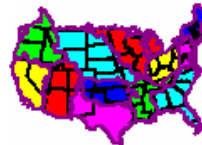
Forecast Period	Display Option	Option Type
DAY 1 (12z-12z) ▾	<input type="radio"/> Text File	NGM ▾
	<input checked="" type="radio"/> Graphic	Mean Absolute Error ▾

Display the Text File or Graphic . . .

Six-panel Comparison Plots . . .

NPVU
Home Page

Questions? Comments?
Send mail to [Brett McDonald](mailto:Brett.McDonald).
Last Modified 08 January 2001



Want to select another Verification Month?
another Verification Method?
another Statistics Type?

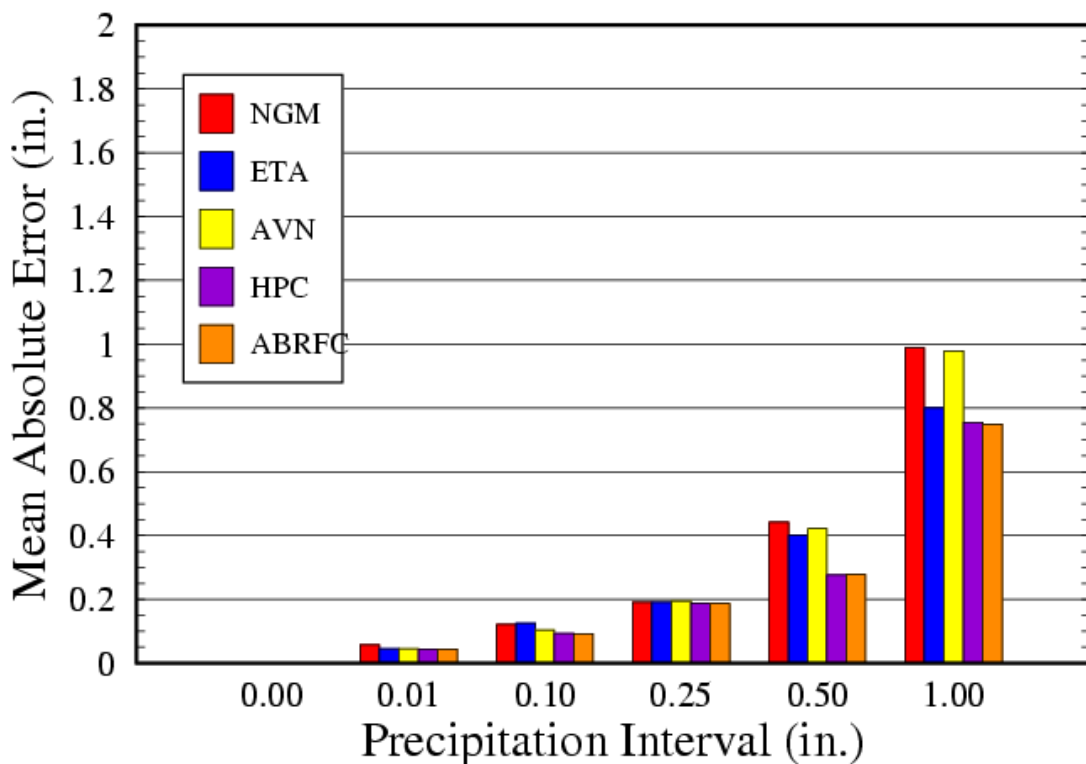
1)	Verification Month	August 2000 ▾
2)	QPF Verification Methodology	Grids ▾
3)	Statistics Type (Interval Type)	<input checked="" type="radio"/> Continuous Observed & Forecast ▾

NPVU – QPF Verification – ABRFC – December 2000

06-Hour GRIDDED Error Statistics
(intervals based on OBSERVED & FORECAST amounts)

NPVU – ABRFC – MAE

Dec2000 DAY1 06H GRD (OBS & FOR)



Mon Jan 8 10:35:21 2001

Direct Link to [GRAPHIC](#)

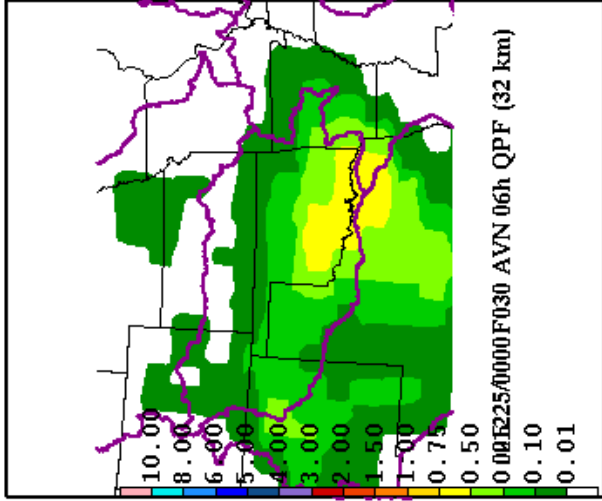
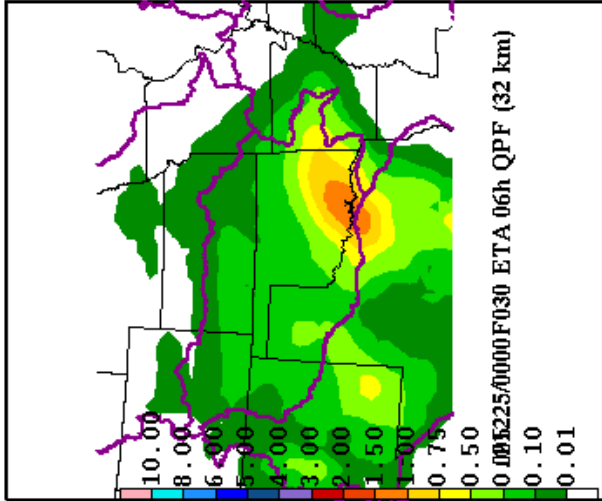
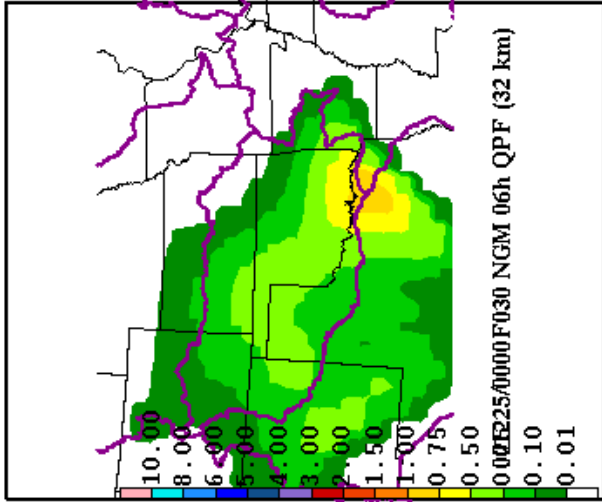
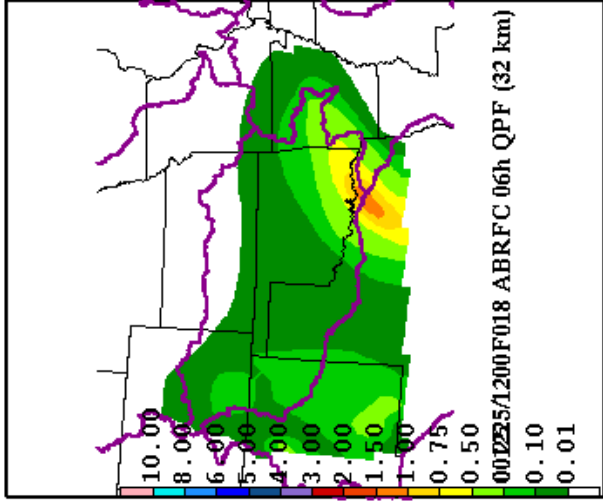
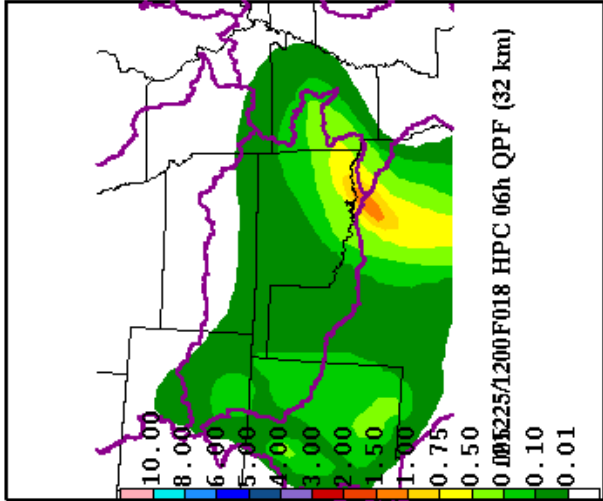
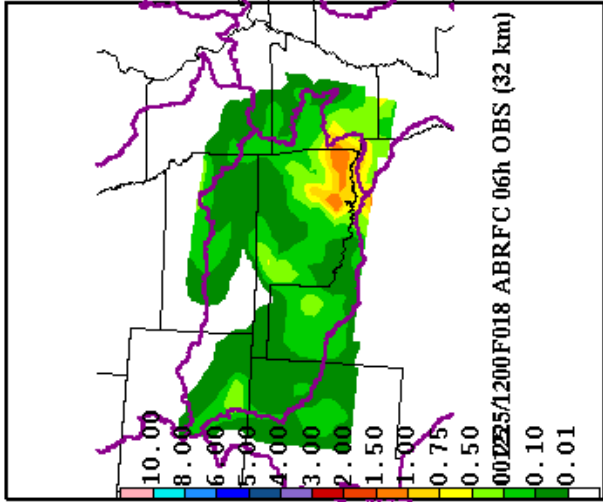
NPVU – QPF Verification – ABRFC – 2000 – Comparison Plots

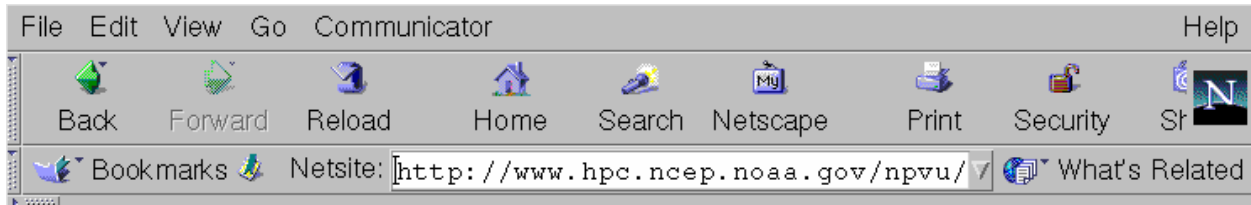
NOTE: Select a combination of the following 8 variables to specify the comparison plot that you would like. Obviously, a plot is not available for every combination – some screening/checking will be done. If an expected plot is not available, please reference the [Plot Log](#) and/or send a request to [Brett McDonald](#).

1)	Verification Domain	ABRFC
2)	Year	2000
3)	Month	December
4)	Day	01
5)	Hour/Cycle	12
6)	Forecast Hour	f006
7)	Duration (hours)	06-hours
8)	Precipitation Type	Grids

Show the 6-panel Comparison Plot . . .







NPVU – RFC Data

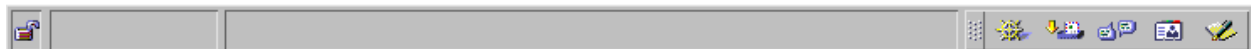
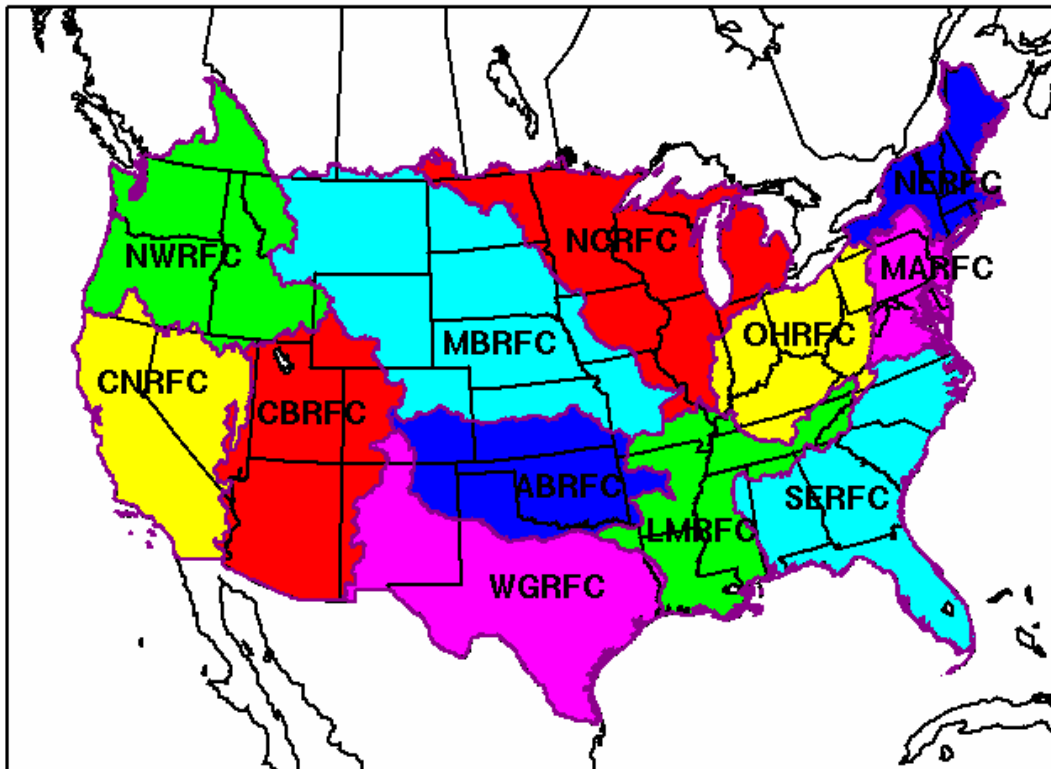
Questions? Comments?
Send mail to [Brett McDonald](mailto:Brett.McDonald).
Last Modified 02 November 2000

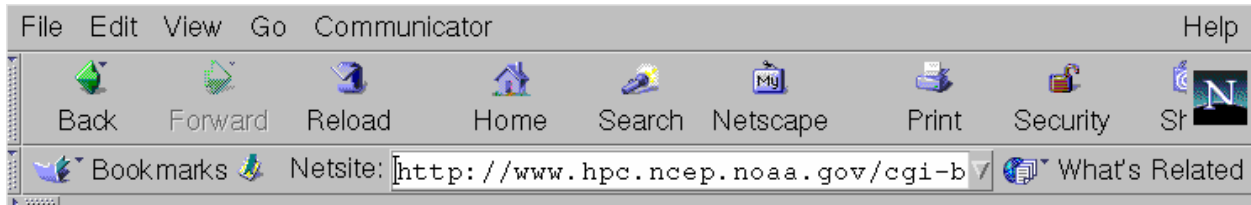
[RFC Data Log](#)

Lists of most recently produced images/files: [[QPF](#)] [[QPE](#)] [[FFG](#)] [[HYD](#)] [[QPS](#)]

1) Click on a River Forecast Center Area

or Click on the Outside Area to Access the [Mosaics](#)





NPVU – RFC Data – Mosaic

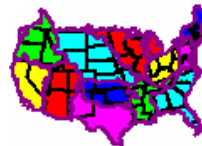
2) Select the type of data

QPF: Quantitative Precipitation Forecasts ▾

Find the most recent Mosaic data . . .

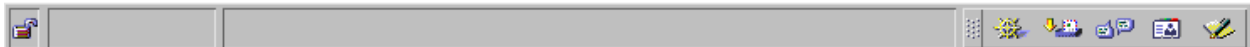
NPVU
Home Page

Questions? Comments?
Send mail to [Brett McDonald](mailto:Brett.McDonald).
Last Modified 30 October 2000



Want to select another RFC domain?

[\[ABRFC\]](#) [\[CBRFC\]](#) [\[CNRFC\]](#) [\[LMRFC\]](#) [\[MARFC\]](#) [\[MBRFC\]](#)
[\[NCRFC\]](#) [\[NERFC\]](#) [\[NWRFC\]](#) [\[OHRFC\]](#) [\[SERFC\]](#) [\[WGRFC\]](#)



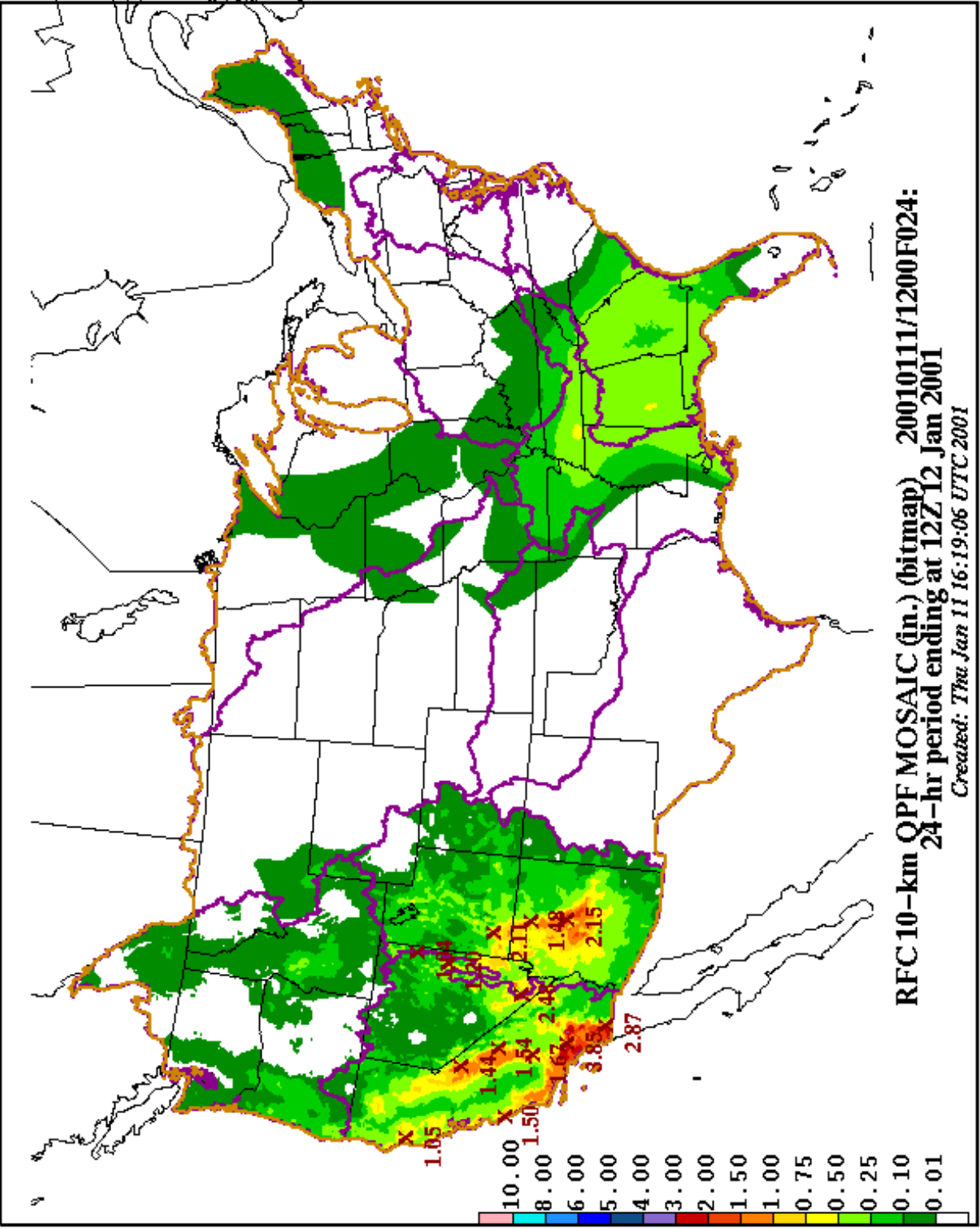
NPVU – RFC Data – Mosaic – QPF

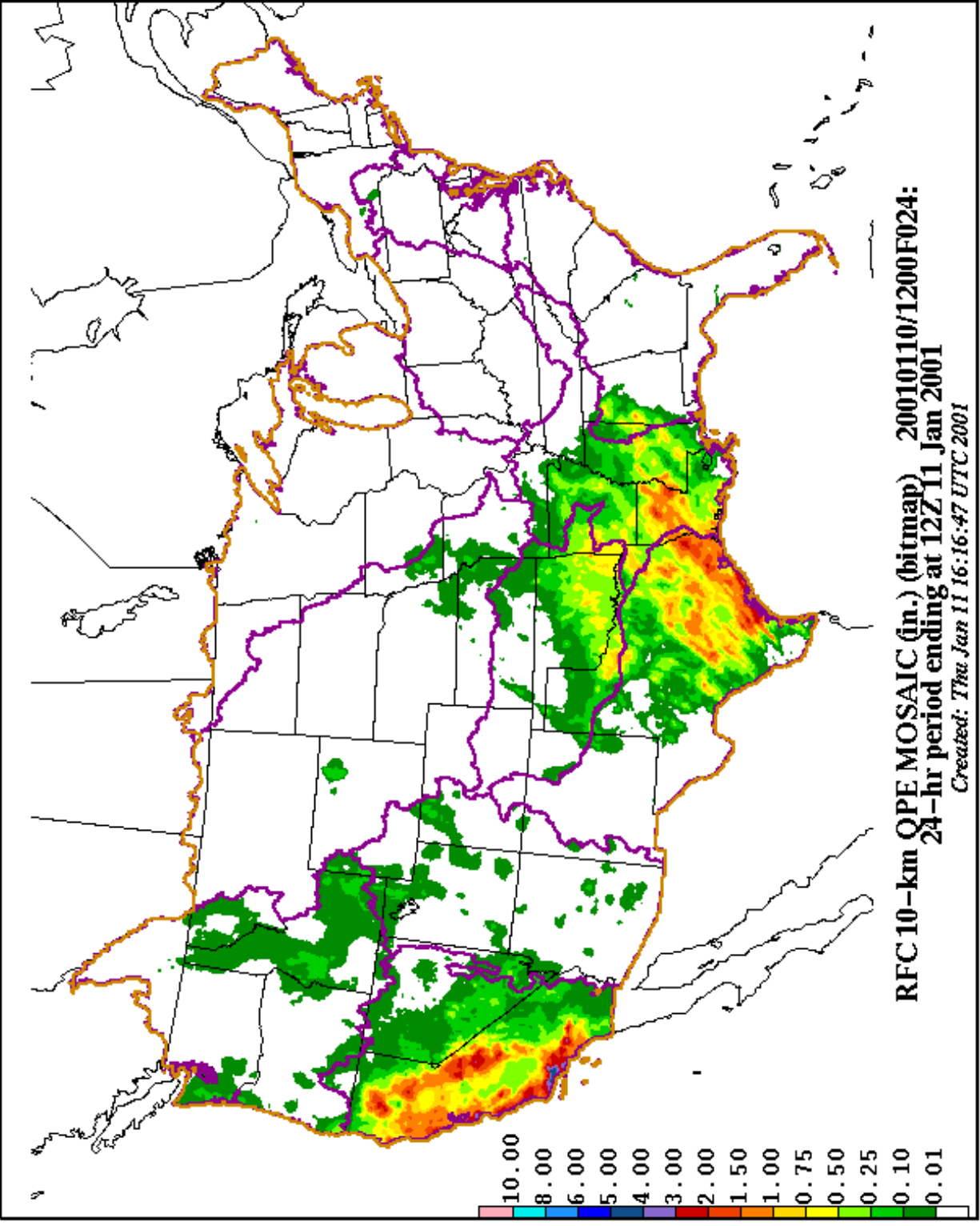
YYYYMMDDHH of most recent data: [2001011112](#)

Cycle	Duration	Forecast Hour
0000 UTC	06-hour	F006
		F012
		F018
		F024
	24-hour	F024
		F006
		F012
		F018
	24-hour	F024
		F006
		F012
		F018
1200 UTC	06-hour	F006
		F012
		F018
		F024
	24-hour	F024
		F006
		F012
		F018
1800 UTC	06-hour	F006
		F012
		F018
		F024
	24-hour	F024

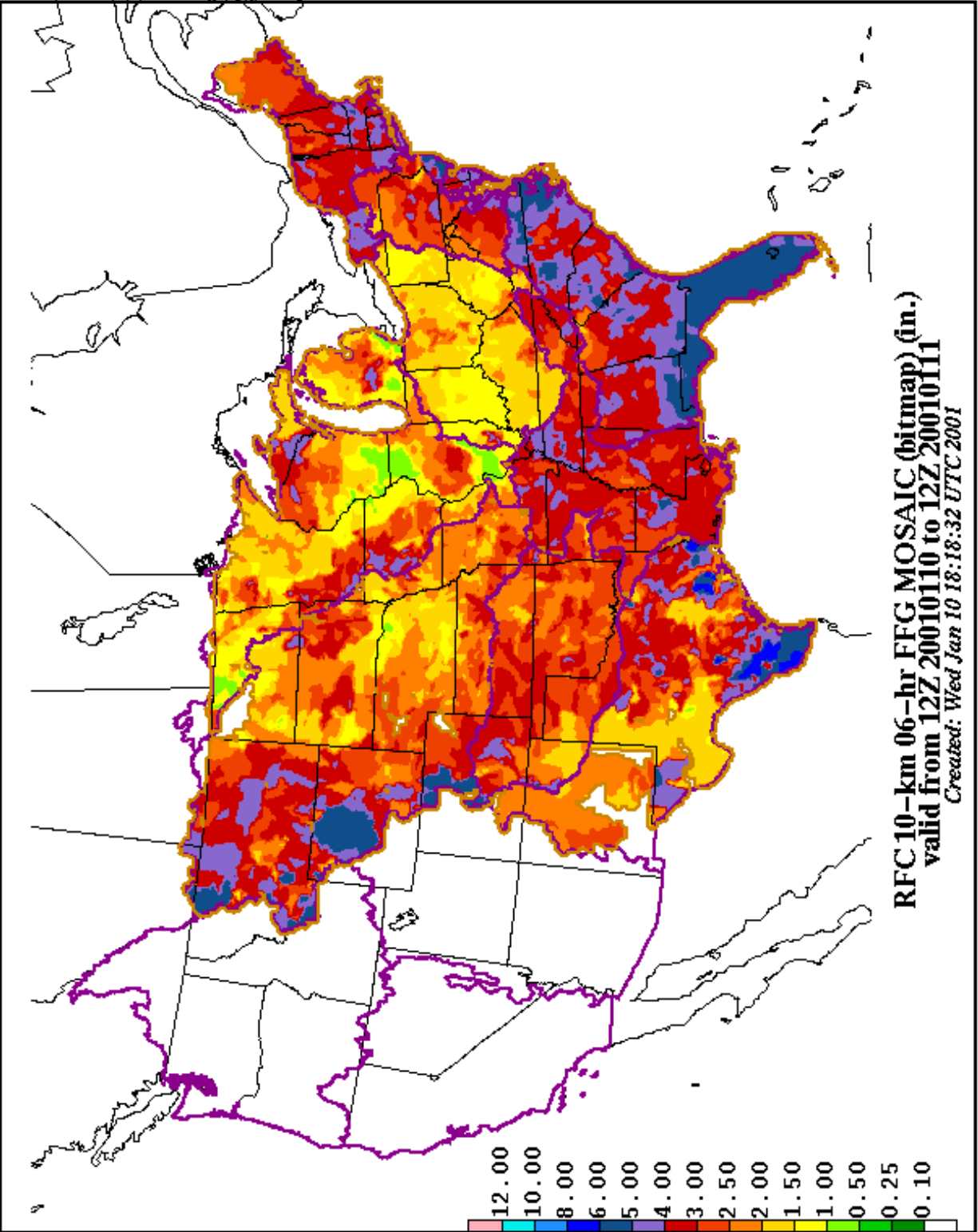
Click here for a Full Directory Listing of all available recent images:

[Mosaic – QPF](#)





RFC 10-km QPE MOSAIC (in.) (bitmap) 20010110/1200F024:
24-hr period ending at 12Z 11 Jan 2001
Created: Thu Jan 11 16:16:47 UTC 2001



RFC 10-km 06-hr FFG Mosaic (bitmap) (in.)
valid from 12Z 20010110 to 12Z 20010111
Created: Wed Jan 10 18:18:32 UTC 2001