



NEWS RELEASE



Transmission of material in this release is embargoed until 8:30 a.m. (EDT) Friday, May 13, 2011

USDL-11-0681

Technical information: (202) 691-7000 • Reed.Steve@bls.gov • www.bls.gov/cpi
Media Contact: (202) 691-5902 • PressOffice@bls.gov

(NOTE: This release was reissued on Thursday, August 18, 2011, to correct errors in the April 2011 data. Corrections have been made to Table 7 for the following indexes: all items, energy, housing, fuels and utilities, and services. There were no changes made to the text of the release.)

CONSUMER PRICE INDEX – APRIL 2011

The Consumer Price Index for All Urban Consumers (CPI-U) increased 0.4 percent in April on a seasonally adjusted basis, the U.S. Bureau of Labor Statistics reported today. Over the last 12 months, the all items index increased 3.2 percent before seasonal adjustment.

The energy index posted another increase in April as the gasoline index continued to rise, the latter accounting for almost half of the seasonally adjusted all items increase. The household energy index also rose, with all of its major components posting increases. The food index increased as well in April, though the 0.5 percent rise in the food at home index was the smallest increase this year. Within the food at home component, the indexes for meats, poultry, fish, and eggs, for dairy and related products, and for nonalcoholic beverages all posted notable increases, though the fresh vegetables index did decline following recent advances.

The index for all items less food and energy rose 0.2 percent in April, the third increase of that size in the last four months. Indexes making major contributions to that increase included those for new vehicles, used cars and trucks, medical care, and shelter.

The 12-month increases of major indexes continue to climb. The all items index rose 3.2 percent for the 12 months ending April 2011, the highest figure since October 2008. The energy index has now risen 19.0 percent over the last 12 months, with the gasoline index up 33.1 percent. The food index has risen 3.2 percent while the index for all items less food and energy has increased 1.3 percent; both figures represent increases over recent months.

Chart 1. One-month percent change in CPI for All Urban Consumers (CPI-U), seasonally adjusted, Apr. 2010 - Apr. 2011
Percent change

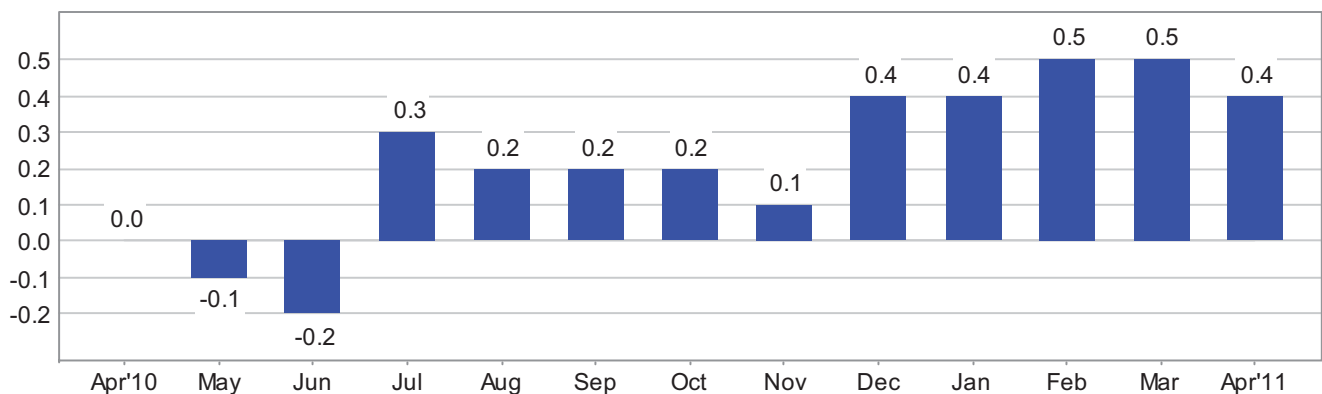


Chart 2. 12-month percent change in CPI for All Urban Consumers (CPI-U), not seasonally adjusted, Apr. 2010 - Apr. 2011

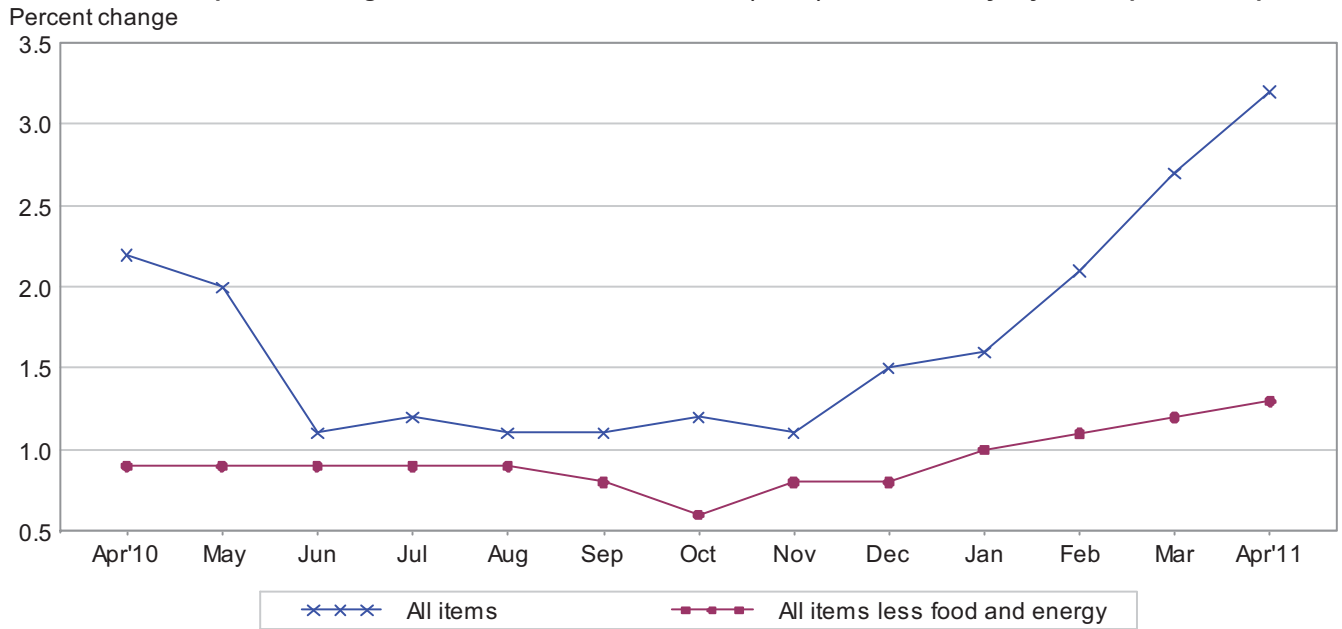


Table A. Percent changes in CPI for All Urban Consumers (CPI-U): U.S. city average

	Seasonally adjusted changes from preceding month							Un-adjusted 12-mos. ended Apr. 2011
	Oct. 2010	Nov. 2010	Dec. 2010	Jan. 2011	Feb. 2011	Mar. 2011	Apr. 2011	
All items2	.1	.4	.4	.5	.5	.4	3.2
Food1	.2	.1	.5	.6	.8	.4	3.2
Food at home1	.2	.2	.7	.8	1.1	.5	3.9
Food away from home ¹1	.1	.1	.2	.2	.3	.3	2.1
Energy	2.5	.1	4.0	2.1	3.4	3.5	2.2	19.0
Energy commodities	4.4	.7	6.4	4.0	4.8	5.5	3.1	32.7
Gasoline (all types)	4.5	.7	6.7	3.5	4.7	5.6	3.3	33.1
Fuel oil ¹	4.7	4.2	4.9	6.8	5.8	6.2	3.2	35.1
Energy services0	-.8	.6	-.6	1.1	.2	.6	.1
Electricity2	.6	.3	-.5	.4	.7	.2	.6
Utility (piped) gas service	-.6	-5.3	1.7	-1.2	3.4	-1.4	1.9	-1.5
All items less food and energy0	.1	.1	.2	.2	.1	.2	1.3
Commodities less food and energy commodities	-.2	.0	-.1	.2	.2	.1	.4	.7
New vehicles	-.1	-.2	-.1	-.1	1.0	.7	.7	2.4
Used cars and trucks	-.6	.1	-.1	-.3	.1	.8	1.2	3.3
Apparel	-.2	.1	.1	1.0	-.9	-.5	.2	.1
Medical care commodities ¹1	.2	.1	.5	.7	.5	.5	3.1
Services less energy services1	.2	.1	.1	.2	.2	.1	1.6
Shelter1	.1	.1	.1	.1	.1	.1	1.0
Transportation services3	.4	.2	.6	.5	.5	.2	3.6
Medical care services2	.2	.3	-.1	.4	.1	.3	2.8

¹ Not seasonally adjusted.

Consumer Price Index Data for April 2011

Food

The food index rose 0.4 percent in April after rising 0.8 percent in March. The food at home index, up 1.1 percent in March, rose 0.5 percent in April. The deceleration was mainly due to the fresh vegetables index, which turned down in April, falling 2.7 percent after posting large increases in each of the previous two months. This led to the fruits and vegetables index declining 1.1 percent, the only major grocery store food group to decline in April. In contrast to this decline, the index for dairy and related products rose 1.7 percent, the index for nonalcoholic beverages advanced 1.2 percent, and the index for meats, poultry, fish, and eggs increased 1.1 percent. The indexes for cereals and bakery products and for other food at home posted smaller increases. The food at home index has risen 3.9 percent over the last 12 months, with all major grocery store food groups increasing over the period. The index for food away from home rose 0.3 percent in April, the same increase as in March.

Energy

The energy index rose 2.2 percent in April. This is the tenth increase in a row and follows advances of 3.5 percent in March and 3.4 percent in February. The gasoline index rose 3.3 percent in April after a 5.6 percent increase in March. (Before seasonal adjustment, gasoline prices rose 7.5 percent in April.) The index for household energy also increased in April, rising 0.7 percent. The fuel oil index rose 3.2 percent, continuing a strong upward trend, while the index for electricity increased 0.2 percent. The index for natural gas, which declined in March, rose 1.9 percent in April. The household energy index has risen 1.9 percent over the last 12 months, with the fuel oil index up 35.1 percent and the electricity index up 0.6 percent but the index for natural gas down 1.5 percent.

All items less food and energy

The index for all items less food and energy rose 0.2 percent in April after increasing 0.1 percent in March. The shelter index, and its rent and owners' equivalent rent components, all repeated their March increases of 0.1 percent. The new vehicles index rose 0.7 percent, also a repeat of its March increase, while the index for used cars and trucks advanced 1.2 percent in April after a 0.8 percent increase in March. The index for medical care, which rose 0.2 percent in March, advanced 0.4 percent in April. The index for medical care commodities increased 0.5 percent while the medical care services index rose 0.3 percent. The indexes for apparel and for household furnishings and operations both turned up in April, each rising 0.2 percent after declining in March. The index for recreation was unchanged in April, as it was in March. The tobacco index declined in April, falling 0.4 percent, its largest decline since 2007.

The index for all items less food and energy increased 1.3 percent over the last 12 months. Indexes that have increased over that time include airline fares (up 12.1 percent), medical care (up 2.9 percent), new vehicles (up 2.4 percent), and shelter (up 1.0 percent). Indexes that have declined included household furnishings and operations (down 0.9 percent) and recreation (down 0.4 percent).

Not seasonally adjusted CPI measures

The Consumer Price Index for All Urban Consumers (CPI-U) increased 3.2 percent over the last 12 months to an index level of 224.906 (1982-84=100). For the month, the index increased 0.6 percent prior to seasonal adjustment.

The Consumer Price Index for Urban Wage Earners and Clerical Workers (CPI-W) increased 3.6 percent over the last 12 months to an index level of 221.743 (1982-84=100). For the month, the index rose 0.8 percent prior to seasonal adjustment.

The Chained Consumer Price Index for All Urban Consumers (C-CPI-U) increased 2.9 percent over the last 12 months. For the month, the index increased 0.6 percent on a not seasonally adjusted basis. Please note that the indexes for the post-2009 period are subject to revision.

The Consumer Price Index for May 2011 is scheduled to be released on Wednesday, June 15, 2011, at 8:30 a.m. (EDT).

Facilities for Sensory Impaired

Information from this release will be made available to sensory impaired individuals upon request. Voice phone: 202-691-5200, Federal Relay Services: 1-800-877-8339.

Brief Explanation of the CPI

The Consumer Price Index (CPI) is a measure of the average change in prices over time of goods and services purchased by households. The Bureau of Labor Statistics publishes CPIs for two population groups: (1) the CPI for Urban Wage Earners and Clerical Workers (CPI-W), which covers households of wage earners and clerical workers that comprise approximately 32 percent of the total population and (2) the CPI for All Urban Consumers (CPI-U) and the Chained CPI for All Urban Consumers (C-CPI-U), which cover approximately 87 percent of the total population and include in addition to wage earners and clerical worker households, groups such as professional, managerial, and technical workers, the self-employed, short-term workers, the unemployed, and retirees and others not in the labor force.

The CPIs are based on prices of food, clothing, shelter, and fuels, transportation fares, charges for doctors' and dentists' services, drugs, and other goods and services that people buy for day-to-day living. Prices are collected each month in 87 urban areas across the country from about 4,000 housing units and approximately 26,000 retail establishments-department stores, supermarkets, hospitals, filling stations, and other types of stores and service establishments. All taxes directly associated with the purchase and use of items are included in the index. Prices of fuels and a few other items are obtained every month in all 87 locations. Prices of most other commodities and services are collected every month in the three largest geographic areas and every other month in other areas. Prices of most goods and services are obtained by personal visits or telephone calls of the Bureau's trained representatives.

In calculating the index, price changes for the various items in each location are averaged together with weights, which represent their importance in the spending of the appropriate population group. Local data are then combined to obtain a U.S. city average. For the CPI-U and CPI-W separate indexes are also published by size of city, by region of the country, for cross-classifications of regions and population-size classes, and for 27 local areas. Area indexes do not measure differences in the level of prices among cities; they only measure the average change in prices for each area since the base period. For the C-CPI-U data are issued only at the national level. It is important to note that the CPI-U and CPI-W are considered final when released, but the C-CPI-U is issued in preliminary form and subject to two annual revisions.

The index measures price change from a designed reference date. For the CPI-U and the CPI-W the reference base is 1982-84 equals 100. The reference base for the C-CPI-U is December 1999 equals 100. An increase of 16.5 percent from the reference base, for example, is shown as 116.500. This change can also be expressed in dollars as follows: the price of a base period market basket of goods and services in the CPI has risen from \$10 in 1982-84 to \$11.65.

For further details visit the CPI home page on the Internet at <http://www.bls.gov/cpi/> or contact our CPI Information and Analysis Section on (202) 691-7000.

Note on Sampling Error in the Consumer Price Index

The CPI is a statistical estimate that is subject to sampling error because it is based upon a sample of retail prices and not the complete universe of all prices. BLS calculates and publishes estimates of the 1-month, 2-month, 6-month and 12-month percent change standard errors annually, for the CPI-U. These standard error estimates can be used to construct confidence intervals for hypothesis testing. For example, the estimated standard error of the 1 month percent change is 0.03 percent for the U.S. All Items Consumer Price Index. This means that if we repeatedly sample from the universe of all retail prices using the same methodology, and estimate a percentage change for each sample, then 95% of these estimates would be within 0.06 percent of the 1 month percentage change based on all retail prices. For example, for a 1-month change of 0.2 percent in the All Items CPI for All Urban Consumers, we are 95 percent confident that the actual percent change based on all retail prices would fall between 0.14 and 0.26 percent. For the latest data, including information on how to use the estimates of standard error, see “Variance Estimates for Price Changes in the Consumer Price Index, January-December 2010”. These data are available on the CPI home page (<http://www.bls.gov/cpi>), or by using the following link <http://www.bls.gov/cpi/cpivar2010.pdf>

Calculating Index Changes

Movements of the indexes from one month to another are usually expressed as percent changes rather than changes in index points, because index point changes are affected by the level of the index in relation to its base period while percent changes are not. The example below illustrates the computation of index point and percent changes.

Percent changes for 3-month and 6-month periods are expressed as annual rates and are computed according to the standard formula for compound growth rates. These data indicate what the percent change would be if the current rate were maintained for a 12-month period.

Index Point Change

CPI	202.416
Less previous index	201.800
Equals index point change	.616

Percent Change

Index point difference	.616
Divided by the previous index	201.800
Equals	0.003
Results multiplied by one hundred	0.003x100
Equals percent change	0.3

Regions Defined

The states in the four regions shown in Tables 3 and 6 are listed below.

The Northeast--Connecticut, Maine, Massachusetts, New Hampshire, New York, New Jersey, Pennsylvania, Rhode Island, and Vermont.

The Midwest--Illinois, Indiana, Iowa, Kansas, Michigan, Minnesota, Missouri, Nebraska, North Dakota, Ohio, South Dakota, and Wisconsin.

The South--Alabama, Arkansas, Delaware, Florida, Georgia, Kentucky, Louisiana, Maryland, Mississippi, North Carolina, Oklahoma, South Carolina, Tennessee, Texas, Virginia, West Virginia, and the District of Columbia.

The West--Alaska, Arizona, California, Colorado, Hawaii, Idaho, Montana, Nevada, New Mexico, Oregon, Utah, Washington, and Wyoming.

A Note on Seasonally Adjusted and Unadjusted Data

Because price data are used for different purposes by different groups, the Bureau of Labor Statistics publishes seasonally adjusted as well as unadjusted changes each month.

For analyzing general price trends in the economy, seasonally adjusted changes are usually preferred since they eliminate the effect of changes that normally occur at the same time and in about the same magnitude every year--such as price movements resulting from changing climatic conditions, production cycles, model changeovers, holidays, and sales.

The unadjusted data are of primary interest to consumers concerned about the prices they actually pay. Unadjusted data also are used extensively for escalation purposes. Many collective bargaining contract agreements and pension plans, for example, tie compensation changes to the Consumer Price Index before adjustment for seasonal variation.

Seasonal factors used in computing the seasonally adjusted indexes are derived by the X-12-ARIMA Seasonal Adjustment Method. Seasonally adjusted indexes and seasonal factors are computed annually. Each year, the last 5 years of seasonally adjusted data are revised. Data from January 2006 through December 2010 were replaced in January 2011. Exceptions to the usual revision schedule were: the updated seasonal data at the end of 1977 replaced data from 1967 through 1977; and, in January 2002, dependently seasonally adjusted series were revised for January 1987-December 2001 as a result of a change in the aggregation weights for dependently adjusted series. For further information, please see "Aggregation of Dependently Adjusted Seasonally Adjusted Series," in the October 2001 issue of the CPI Detailed Report.

Effective with the publication of data from January 2006 through December 2010 in January 2011, the Video and audio series and the Information technology, hardware and services series were changed from independently adjusted to dependently adjusted. This resulted in an increase in the number of seasonal components used in deriving seasonal movement of the All items and 54 other lower level aggregations, from 73 for the publication of January 1998 through December 2005 data to 82 for the publication of seasonally adjusted data for January 2006 and later. Each year the seasonal status of every series is reevaluated based upon certain statistical criteria. If any of the 82 components change their seasonal adjustment status from seasonally adjusted to not seasonally adjusted, not seasonally adjusted data will be used in the aggregation of the dependent series for the last 5 years, but the seasonally adjusted

indexes before that period will not be changed. Note: 37 of the 82 components are not seasonally adjusted for 2011.

Seasonally adjusted data, including the all items index levels, are subject to revision for up to five years after their original release. For this reason, BLS advises against the use of these data in escalation agreements.

Effective with the calculation of the seasonal factors for 1990, the Bureau of Labor Statistics has used an enhanced seasonal adjustment procedure called Intervention Analysis Seasonal Adjustment for some CPI series. Intervention Analysis Seasonal Adjustment allows for better estimates of seasonally adjusted data. Extreme values and/or sharp movements which might distort the seasonal pattern are estimated and removed from the data prior to calculation of seasonal factors. Beginning with the calculation of seasonal factors for 1996, X-12-ARIMA software was used for Intervention Analysis Seasonal Adjustment.

For the seasonal factors introduced in January 2011, BLS adjusted 29 series using Intervention Analysis Seasonal Adjustment, including selected food and beverage items, motor fuels, electricity and vehicles. For example, this procedure was used for the Motor fuel series to offset the effects of events such as damage to oil refineries from Hurricane Katrina.

For a complete list of Intervention Analysis Seasonal Adjustment series and explanations, please refer to the article "Intervention Analysis Seasonal Adjustment", located on our website at <http://www.bls.gov/cpi/cpisapage.htm>.

For additional information on seasonal adjustment in the CPI, please write to the Bureau of Labor Statistics, Division of Consumer Prices and Price Indexes, Washington, DC 20212 or contact David Levin at (202) 691-6968, or by e-mail at Levin.David@bls.gov. If you have general questions about the CPI, please call our information staff at (202) 691-7000.

Table 1. Consumer Price Index for All Urban Consumers (CPI-U): U.S. city average, by expenditure category and commodity and service group

(1982-84=100, unless otherwise noted)

CPI-U Expenditure category	Relative importance, December 2010	Unadjusted indexes		Unadjusted percent change to Apr. 2011 from—		Seasonally adjusted percent change from—		
		Mar. 2011	Apr. 2011	Apr. 2010	Mar. 2011	Jan. to Feb.	Feb. to Mar.	Mar. to Apr.
All items	100.000	223.467	224.906	3.2	0.6	0.5	0.5	0.4
All items (1967=100)	-	669.409	673.717	-	-	-	-	-
Food and beverages	14.792	225.479	226.248	3.1	.3	.5	.7	.4
Food	13.742	225.350	226.150	3.2	.4	.6	.8	.4
Food at home	7.816	223.430	224.233	3.9	.4	.8	1.1	.5
Cereals and bakery products	1.090	255.482	255.956	2.2	.2	.0	.5	.1
Meats, poultry, fish, and eggs	1.813	218.808	220.747	7.6	.9	1.2	1.1	1.1
Dairy and related products ¹839	206.161	209.707	6.3	1.7	.6	1.3	1.7
Fruits and vegetables	1.152	290.279	286.501	2.6	-1.3	2.2	1.9	-1.1
Nonalcoholic beverages and beverage materials926	165.038	166.086	2.4	.6	.2	.8	1.2
Other food at home	1.996	194.747	195.239	2.2	.3	.6	1.0	.3
Sugar and sweets ¹297	205.505	203.783	1.5	-.8	.8	.7	-.8
Fats and oils232	214.352	213.818	8.1	-.2	.9	2.8	.8
Other foods	1.466	206.743	207.892	1.4	.6	.5	.8	.5
Other miscellaneous foods ^{1 2}432	122.665	123.769	1.2	.9	.4	1.0	.9
Food away from home ¹	5.926	229.282	230.082	2.1	.3	.2	.3	.3
Other food away from home ^{1 2}329	161.886	162.218	2.2	.2	.7	.0	.2
Alcoholic beverages	1.051	225.693	226.053	1.7	.2	.2	.0	.3
Housing	41.460	217.707	217.901	1.0	.1	.3	.1	.2
Shelter	31.955	250.310	250.447	1.0	.1	.1	.1	.1
Rent of primary residence ³	5.925	252.145	252.221	1.3	.0	.1	.1	.1
Lodging away from home ²776	136.486	136.597	1.7	.1	.0	.8	.0
Owners' equivalent rent of residences ^{3 4}	24.905	258.263	258.400	.9	.1	.1	.1	.1
Owners' equivalent rent of primary residence ^{3 4}	23.310	258.253	258.387	.9	.1	.1	.1	.1
Tenants' and household insurance ^{1 2}349	125.863	126.574	1.4	.6	.3	-.5	.6
Fuels and utilities	5.096	216.672	217.254	2.6	.3	1.2	.6	.6
Household energy	4.000	190.071	190.622	1.9	.3	1.3	.6	.7
Fuel oil and other fuels ¹309	341.884	348.657	25.4	2.0	4.1	4.6	2.0
Energy services ³	3.691	190.213	190.459	.1	.1	1.1	.2	.6
Water and sewer and trash collection services ²	1.095	177.694	178.033	5.3	.2	.8	.5	.4
Household furnishings and operations	4.409	124.735	124.893	-.9	.1	.1	-.1	.2
Household operations ^{1 2}772	150.541	151.338	.8	.5	.1	-.5	.5
Apparel	3.601	121.286	122.226	.1	.8	-.9	-.5	.2
Men's and boys' apparel882	112.337	113.487	-.2	1.0	-.9	-.7	.0
Women's and girls' apparel	1.520	109.544	110.144	-.6	.5	-1.2	-.9	.3
Infants' and toddlers' apparel192	111.547	112.323	-3.6	.7	-1.6	.1	.3
Footwear700	128.518	128.581	-.7	.0	-.4	-.2	-.6
Transportation	17.308	211.014	216.867	11.8	2.8	1.9	2.2	1.4
Private transportation	16.082	206.165	212.210	12.0	2.9	1.9	2.3	1.5
New and used motor vehicles ²	6.333	98.275	98.972	2.2	.7	.5	.8	.8
New vehicles	3.513	140.860	141.462	2.4	.4	1.0	.7	.7
Used cars and trucks	2.055	144.072	145.968	3.3	1.3	.1	.8	1.2
Motor fuel	5.079	303.565	326.024	33.2	7.4	4.8	5.6	3.2
Gasoline (all types)	4.865	302.574	325.282	33.1	7.5	4.7	5.6	3.3
Motor vehicle parts and equipment ¹408	140.686	141.590	4.3	.6	.3	-.2	.6
Motor vehicle maintenance and repair ¹	1.172	250.820	251.458	1.7	.3	.0	.0	.3
Public transportation	1.227	270.366	272.187	9.3	.7	1.9	1.3	.2
Medical care	6.627	397.726	398.813	2.9	.3	.4	.2	.4
Medical care commodities ¹	1.633	322.691	324.241	3.1	.5	.7	.5	.5
Medical care services	4.994	420.852	421.716	2.8	.2	.4	.1	.3
Professional services	2.830	334.671	334.978	2.4	.1	.5	.2	.1

See footnotes at end of table.

Table 1. Consumer Price Index for All Urban Consumers (CPI-U): U.S. city average, by expenditure category and commodity and service group-Continued

(1982-84=100, unless otherwise noted)

CPI-U Expenditure category	Relative importance, December 2010	Unadjusted indexes		Unadjusted percent change to Apr. 2011 from—		Seasonally adjusted percent change from—			
		Mar. 2011	Apr. 2011	Apr. 2010	Mar. 2011	Jan. to Feb.	Feb. to Mar.	Mar. to Apr.	
Hospital and related services	1.703	634.387	637.188	5.4	0.4	0.5	0.2	0.6	
Recreation ²	6.293	113.261	113.368	-.4	.1	.3	.0	.0	
Video and audio ²	1.816	98.719	98.918	-1.2	.2	.5	.1	.0	
Education and communication ²	6.421	130.682	130.643	1.0	.0	.2	.1	.1	
Education ²	3.107	204.251	204.316	3.8	.0	.4	.3	.3	
Educational books and supplies204	522.903	522.440	4.2	-.1	-.2	.6	.3	
Tuition, other school fees, and childcare	2.903	586.914	587.151	3.8	.0	.4	.3	.3	
Communication ²	3.313	83.730	83.655	-1.5	-.1	.0	-.1	-.1	
Information and information processing ²	3.138	80.364	80.281	-1.8	-.1	.0	-.1	-.1	
Telephone services ^{1 2}	2.334	101.258	101.191	-1.2	-.1	-.1	-.1	-.1	
Information technology, hardware and services ⁵804	9.196	9.176	-3.7	-.2	.2	-.3	-.3	
Personal computers and peripheral equipment ⁶228	72.073	72.010	-8.0	-.1	-.5	-1.6	-.2	
Other goods and services	3.497	385.637	386.226	1.9	.2	.1	-.1	.1	
Tobacco and smoking products ¹906	830.693	827.287	5.0	-.4	.2	.1	-.4	
Personal care	2.591	207.758	208.485	.9	.3	.1	-.2	.3	
Personal care products ¹671	160.981	161.418	-.1	.3	.3	-.2	.3	
Personal care services ¹638	230.034	230.380	.3	.2	.1	-.1	.2	
Miscellaneous personal services	1.055	359.096	361.062	2.3	.5	.2	.1	.4	
Commodity and service group									
Commodities	40.012	182.728	185.311	5.7	1.4	1.0	1.2	.8	
Food and beverages	14.792	225.479	226.248	3.1	.3	.5	.7	.4	
Commodities less food and beverages	25.219	159.351	162.578	7.2	2.0	1.2	1.4	1.0	
Nondurables less food and beverages	15.474	208.134	214.256	11.4	2.9	1.6	1.8	1.1	
Apparel	3.601	121.286	122.226	.1	.8	-.9	-.5	.2	
Nondurables less food, beverages, and apparel	11.873	266.993	276.504	15.0	3.6	2.1	2.9	1.5	
Durables	9.745	111.707	112.242	.7	.5	.4	.4	.6	
Services	59.988	263.956	264.256	1.5	.1	.3	.2	.2	
Rent of shelter ⁴	31.607	260.834	260.963	1.0	.0	.0	.0	.1	
Tenants' and household insurance ^{1 2}349	125.863	125.574	1.4	.6	.3	-.5	.6	
Energy services ³	3.691	190.213	190.459	.1	.1	1.1	.2	.6	
Water and sewer and trash collection services ²	1.095	177.694	178.033	5.3	.2	.8	.5	.4	
Household operations ^{1 2}772	150.541	151.338	.8	.5	.1	-.5	.5	
Transportation services	6.140	266.754	267.587	3.6	.3	.5	.5	.2	
Medical care services	4.994	420.852	421.716	2.8	.2	.4	.1	.3	
Other services	11.340	312.310	312.593	1.3	.1	.2	.1	.1	
Special indexes									
All items less food	86.258	223.192	224.731	3.2	.7	.5	.5	.4	
All items less shelter	68.045	215.505	217.475	4.2	.9	.7	.8	.6	
All items less medical care	93.373	214.907	216.346	3.2	.7	.6	.6	.4	
Commodities less food	26.270	161.804	164.964	7.0	2.0	1.2	1.4	1.0	
Nondurables less food	16.525	209.282	215.090	10.8	2.8	1.5	1.7	1.1	
Nondurables less food and apparel	12.923	262.068	270.729	13.9	3.3	2.0	2.7	1.5	
Nondurables	30.266	217.791	221.504	7.3	1.7	1.1	1.4	.9	
Services less rent of shelter ⁴	28.382	288.077	288.612	2.0	.2	.4	.2	.3	
Services less medical care services	54.994	251.834	252.100	1.4	.1	.2	.1	.2	
Energy	9.079	242.516	253.495	19.0	4.5	3.4	3.5	2.2	
All items less energy	90.921	223.315	223.798	1.6	.2	.3	.2	.2	
All items less food and energy	77.179	223.690	224.118	1.3	.2	.2	.1	.2	
Commodities less food and energy commodities	20.882	144.632	145.214	.7	.4	.2	.1	.4	
Energy commodities	5.388	307.589	329.419	32.7	7.1	4.8	5.5	3.1	
Services less energy services	56.297	271.468	271.775	1.6	.1	.2	.2	.1	
Purchasing power of the consumer dollar (1982-84=\$1.00)	-	\$.447	\$.445	-	-	-	-	-	
Purchasing power of the consumer dollar (1967=\$1.00)	-	\$.149	\$.148	-	-	-	-	-	

¹ Not seasonally adjusted.

² Indexes on a December 1997=100 base.

³ This index series was calculated using a Laspeyres estimator. All other item stratum index series were calculated using a geometric means estimator.

⁴ Indexes on a December 1982=100 base.

⁵ Indexes on a December 1988=100 base.

⁶ Indexes on a December 2007=100 base.

- Data not available.

NOTE: Index applies to a month as a whole, not to any specific date.

Table 2. Consumer Price Index for All Urban Consumers (CPI-U): Seasonally adjusted U.S. city average, by expenditure category and commodity and service group

(1982-84=100, unless otherwise noted)

CPI-U	Seasonally adjusted indexes				Seasonally adjusted annual rate percent change for					
					3 months ended—			6 months ended—		
	Jan. 2011	Feb. 2011	Mar. 2011	Apr. 2011	July 2010	Oct. 2010	Jan. 2011	Apr. 2011	Oct. 2010	Apr. 2011
Expenditure category										
All items	221.062	222.270	223.490	224.433	0.0	2.5	3.9	6.2	1.2	5.1
Food and beverages	222.602	223.779	225.345	226.330	.1	2.3	3.1	6.9	1.2	5.0
Food	222.314	223.544	225.228	226.231	-.1	2.4	3.2	7.2	1.1	5.2
Food at home	218.983	220.800	223.219	224.373	-7	2.1	4.5	10.2	.7	7.3
Cereals and bakery products	253.956	254.037	255.395	255.751	-2.1	2.1	6.1	2.9	.0	4.5
Meats, poultry, fish, and eggs	213.942	216.444	218.803	221.181	7.2	4.9	4.4	14.2	6.0	9.2
Dairy and related products ¹	202.349	203.510	206.161	209.707	3.5	4.7	2.1	15.4	4.1	8.5
Fruits and vegetables	278.517	284.574	289.890	286.716	-13.8	2.1	12.1	12.3	-6.2	12.2
Nonalcoholic beverages and beverage materials	162.636	162.958	164.340	166.375	-2.0	-1.3	4.0	9.5	-1.7	6.7
Other food at home	191.580	192.706	194.602	195.207	.2	.2	.9	7.8	.2	4.3
Sugar and sweets ¹	202.648	204.168	205.505	203.783	.8	3.6	-.6	2.3	2.2	.8
Fats and oils	206.878	208.833	214.596	216.297	-.8	4.7	10.2	19.5	1.9	14.7
Other foods	203.922	204.936	206.493	207.448	.2	-1.2	-.2	7.1	-.5	3.4
Other miscellaneous foods ^{1 2}	120.930	121.438	122.665	123.769	-.8	-1.2	-2.5	9.7	-1.0	3.4
Food away from home ¹	228.181	228.606	229.282	230.082	.8	2.8	1.6	3.4	1.8	2.5
Other food away from home ^{1 2}	160.643	161.836	161.886	162.218	1.5	1.8	1.5	4.0	1.6	2.7
Alcoholic beverages	224.951	225.415	225.409	226.141	2.3	1.3	1.1	2.1	1.8	1.6
Housing	216.983	217.561	217.852	218.192	.1	.4	1.1	2.2	.3	1.7
Shelter	249.523	249.867	250.102	250.278	1.0	.4	1.2	1.2	.7	1.2
Rent of primary residence ³	251.249	251.607	251.930	252.102	.7	.7	2.3	1.4	.7	1.8
Lodging away from home ²	132.892	132.915	133.920	133.885	16.5	-6.9	-4.2	3.0	4.1	-7
Owners' equivalent rent of residences ^{3 4}	257.659	258.016	258.204	258.377	.6	.6	1.2	1.1	.6	1.2
Owners' equivalent rent of primary residence ^{3 4}	257.648	258.003	258.196	258.364	.6	.6	1.2	1.1	.6	1.2
Tenants' and household insurance ^{1 2}	126.192	126.529	125.863	126.574	3.2	4.0	-2.9	1.2	3.6	-.8
Fuels and utilities	215.607	218.231	219.480	220.834	-3.2	2.2	1.8	10.1	-.6	5.8
Household energy	189.553	192.096	193.211	194.539	-5.2	1.5	.9	10.9	-1.9	5.8
Fuel oil and other fuels ¹	314.130	326.919	341.884	348.657	-22.1	25.6	66.5	51.8	-1.1	58.9
Energy services ³	191.114	193.224	193.654	194.751	-3.8	.0	-3.2	7.8	-1.9	2.2
Water and sewer and trash collection services ²	175.400	176.725	177.684	178.316	4.6	4.5	5.2	6.8	4.6	6.0
Household furnishings and operations	124.382	124.493	124.375	124.661	-1.9	-1.5	-.9	.9	-1.7	.0
Household operations ^{1 2}	151.189	151.358	150.541	151.338	1.8	-1.6	2.8	.4	.1	1.6
Apparel	120.456	119.384	118.770	118.951	3.7	-3.0	4.9	-4.9	.3	-.1
Men's and boys' apparel	112.414	111.408	110.648	110.613	7.2	-2.7	1.6	-6.3	2.1	-2.4
Women's and girls' apparel	107.957	106.622	105.708	105.993	3.2	-5.6	7.7	-7.1	-1.3	.1
Infants' and toddlers' apparel	111.436	109.634	109.796	110.154	10.1	-15.9	-2.1	-4.5	-3.8	-3.3
Footwear	128.166	127.691	127.476	126.702	1.8	1.5	-1.3	-4.5	1.6	-2.9
Transportation	203.622	207.433	212.001	215.016	-3.5	12.1	15.4	24.3	4.0	19.8
Private transportation	198.730	202.446	207.045	210.173	-3.8	12.9	14.9	25.1	4.3	19.9
New and used motor vehicles ²	97.000	97.490	98.249	99.051	1.8	-.1	-1.3	8.7	.9	3.6
New vehicles	137.752	139.065	140.078	141.092	.8	.7	-1.6	10.1	.7	4.1
Used cars and trucks	143.664	143.847	144.958	146.704	6.1	-.4	-.9	8.7	2.8	3.8
Motor fuel	277.665	291.093	307.358	317.215	-16.8	44.6	53.5	70.3	9.7	61.7
Gasoline (all types)	277.129	290.027	306.128	316.333	-17.6	46.1	53.6	69.8	9.7	61.5
Motor vehicle parts and equipment ¹	140.487	140.912	140.686	141.590	4.6	3.1	6.5	3.2	3.9	4.8
Motor vehicle maintenance and repair ¹	250.726	250.851	250.820	251.458	.3	3.7	1.5	1.2	2.0	1.3
Public transportation	264.616	269.625	273.100	273.781	.2	1.9	21.7	14.6	1.1	18.1
Medical care	393.843	395.615	396.364	397.793	1.4	4.0	2.0	4.1	2.7	3.0
Medical care commodities ¹	318.929	321.186	322.691	324.241	-.5	2.5	3.7	6.8	1.0	5.2
Medical care services	417.004	418.529	418.937	420.282	2.0	4.5	1.4	3.2	3.3	2.3
Professional services	331.974	333.483	333.993	334.196	2.9	2.6	1.5	2.7	2.8	2.1

See footnotes at end of table.

Table 2. Consumer Price Index for All Urban Consumers (CPI-U): Seasonally adjusted U.S. city average, by expenditure category and commodity and service group-Continued

(1982-84=100, unless otherwise noted)

CPI-U	Seasonally adjusted indexes				Seasonally adjusted annual rate percent change for					
					3 months ended—			6 months ended—		
	Jan. 2011	Feb. 2011	Mar. 2011	Apr. 2011	July 2010	Oct. 2010	Jan. 2011	Apr. 2011	Oct. 2010	Apr. 2011
Expenditure category										
Hospital and related services	624.854	628.137	629.315	633.287	3.4	10.0	2.7	5.5	6.7	4.1
Recreation ²	112.939	113.242	113.228	113.183	-2	-1.8	-.3	.9	-1.0	.3
Video and audio ²	97.904	98.395	98.466	98.437	-2.3	-1.3	-3.1	2.2	-1.8	-.5
Education and communication ²	130.548	130.759	130.898	131.012	1.9	-.1	.9	1.4	.9	1.2
Education ²	203.738	204.456	205.133	205.707	4.7	.6	6.1	3.9	2.6	5.0
Educational books and supplies	520.236	519.288	522.344	523.912	4.2	.2	10.0	2.9	2.2	6.3
Tuition, other school fees, and childcare	585.549	587.834	589.674	591.314	4.8	.6	5.9	4.0	2.7	4.9
Communication ²	83.760	83.746	83.656	83.576	-.6	-.8	-3.7	-.9	-.7	-2.3
Information and information processing ²	80.399	80.383	80.290	80.201	-.7	-.8	-4.8	-1.0	-.7	-2.9
Telephone services ^{1 2}	101.412	101.316	101.258	101.191	.3	-.1	-4.0	-.9	.1	-2.5
Information technology, hardware and services ⁵	9.171	9.189	9.163	9.140	-3.3	-3.0	-7.0	-1.3	-3.2	-4.2
Personal computers and peripheral equipment ⁶	72.662	72.289	71.142	71.002	-4.6	-2.3	-15.6	-8.8	-3.4	-12.3
Other goods and services	385.031	385.532	385.215	385.600	5.4	-.6	2.4	.6	2.3	1.5
Tobacco and smoking products ¹	828.079	829.535	830.693	827.287	16.8	1.1	3.2	-.4	8.7	1.4
Personal care	207.547	207.783	207.451	208.030	1.8	-1.2	2.2	.9	.3	1.6
Personal care products ¹	160.920	161.325	160.981	161.418	-.6	-3.5	2.4	1.2	-2.0	1.8
Personal care services ¹	229.933	230.177	230.034	230.380	1.5	-2.0	1.0	.8	-.3	.9
Miscellaneous personal services	358.181	358.894	359.233	360.622	2.7	1.7	2.2	2.8	2.2	2.5
Commodity and service group										
Commodities	178.833	180.549	182.627	184.090	-1.9	5.0	7.6	12.3	1.5	9.9
Food and beverages	222.602	223.779	225.345	226.330	.1	2.3	3.1	6.9	1.2	5.0
Commodities less food and beverages	155.178	157.054	159.267	160.874	-3.0	6.6	10.3	15.5	1.7	12.9
Nondurables less food and beverages	200.839	204.142	207.789	210.177	-3.9	10.7	20.7	19.9	3.1	20.3
Apparel	120.456	119.384	118.770	118.951	3.7	-3.0	4.9	-4.9	.3	-.1
Nondurables less food, beverages, and apparel	255.448	260.797	268.329	272.442	-7.0	16.5	24.8	29.4	4.1	27.1
Durables	110.557	111.024	111.490	112.128	.5	-1.2	-2.1	5.8	-.3	1.8
Services	263.034	263.745	264.161	264.561	1.2	.9	1.5	2.3	1.0	1.9
Rent of shelter ⁴	260.471	260.509	260.389	260.645	.2	1.5	1.9	.3	.9	1.1
Tenants' and household insurance ^{1 2}	126.192	126.529	125.863	126.574	3.2	4.0	-2.9	1.2	3.6	-.8
Energy services ³	191.114	193.224	193.654	194.751	-3.8	.0	-3.2	7.8	-1.9	2.2
Water and sewer and trash collection services ²	175.400	176.725	177.684	178.316	4.6	4.5	5.2	6.8	4.6	6.0
Household operations ^{1 2}	151.189	151.358	150.541	151.338	1.8	-1.6	2.8	.4	.1	1.6
Transportation services	264.832	266.061	267.523	268.096	1.5	2.7	5.0	5.0	2.1	5.0
Medical care services	417.004	418.529	418.937	420.282	2.0	4.5	1.4	3.2	3.3	2.3
Other services	311.610	312.190	312.626	312.898	2.6	-.4	1.5	1.7	1.1	1.6
Special indexes										
All items less food	220.885	222.091	223.237	224.171	.0	2.5	4.0	6.1	1.3	5.0
All items less shelter	212.429	213.995	215.619	216.878	-.5	3.5	5.1	8.6	1.5	6.9
All items less medical care	212.578	213.755	214.982	215.899	-.1	2.4	4.0	6.4	1.1	5.2
Commodities less food	157.709	159.553	161.713	163.303	-2.8	6.4	9.9	15.0	1.7	12.4
Nondurables less food	202.374	205.455	208.940	211.335	-3.9	10.2	19.5	18.9	2.9	19.2
Nondurables less food and apparel	251.499	256.414	263.245	267.120	-6.3	14.9	22.9	27.3	3.8	25.1
Nondurables	212.320	214.660	217.689	219.744	-2.8	6.4	11.8	14.7	1.7	13.2
Services less rent of shelter ⁴	287.061	288.270	288.851	289.660	1.0	1.5	1.9	3.7	1.3	2.8
Services less medical care services	251.378	251.810	252.011	252.413	.5	1.2	2.0	1.7	.9	1.8
Energy	229.915	237.620	245.941	251.319	-11.6	22.8	27.7	42.8	4.2	35.0
All items less energy	221.922	222.483	222.992	223.494	1.2	.7	1.7	2.9	1.0	2.3
All items less food and energy	222.587	223.029	223.331	223.745	1.4	.4	1.4	2.1	.9	1.8
Commodities less food and energy commodities	143.571	143.793	143.917	144.423	1.0	-.9	.4	2.4	.1	1.4
Energy commodities	281.416	294.905	311.218	320.989	-17.1	43.5	54.2	69.3	9.0	61.6
Services less energy services	270.374	270.955	271.371	271.707	1.6	.9	1.8	2.0	1.2	1.9

¹ Not seasonally adjusted.

² Indexes on a December 1997=100 base.

³ This index series was calculated using a Laspeyres estimator. All other item stratum index series were calculated using a geometric means estimator.

⁴ Indexes on a December 1982=100 base.

⁵ Indexes on a December 1988=100 base.

⁶ Indexes on a December 2007=100 base.

NOTE: Index applies to a month as a whole, not to any specific date.

Table 3. Consumer Price Index for All Urban Consumers (CPI-U): Selected areas, all items index

(1982-84=100, unless otherwise noted)

CPI-U	Pricing schedule 1	All items									
		Indexes				Percent change to Apr.2011 from—			Percent change to Mar.2011 from—		
		Jan. 2011	Feb. 2011	Mar. 2011	Apr. 2011	Apr. 2010	Feb. 2011	Mar. 2011	Mar. 2010	Jan. 2011	Feb. 2011
U.S. city average	M	220.223	221.309	223.467	224.906	3.2	1.6	0.6	2.7	1.5	1.0
Region and area size²											
Northeast urban	M	235.969	237.110	239.074	240.267	2.8	1.3	.5	2.5	1.3	.8
Size A - More than 1,500,000	M	237.564	238.798	240.599	241.626	2.6	1.2	.4	2.4	1.3	.8
Size B/C - 50,000 to 1,500,000 ³	M	141.001	141.547	143.001	143.987	3.5	1.7	.7	3.0	1.4	1.0
Midwest urban	M	210.388	211.090	212.954	214.535	3.3	1.6	.7	2.7	1.2	.9
Size A - More than 1,500,000	M	210.928	211.503	213.449	214.878	3.2	1.6	.7	2.6	1.2	.9
Size B/C - 50,000 to 1,500,000 ³	M	135.061	135.665	136.834	138.005	3.4	1.7	.9	2.8	1.3	.9
Size D - Nonmetropolitan (less than 50,000)	M	207.551	208.156	209.713	211.314	3.4	1.5	.8	2.7	1.0	.7
South urban	M	213.589	214.735	217.214	218.820	3.4	1.9	.7	2.8	1.7	1.2
Size A - More than 1,500,000	M	215.127	216.145	218.391	219.944	3.2	1.8	.7	2.7	1.5	1.0
Size B/C - 50,000 to 1,500,000 ³	M	135.925	136.625	138.211	139.177	3.4	1.9	.7	2.9	1.7	1.2
Size D - Nonmetropolitan (less than 50,000)	M	216.750	218.772	222.275	224.716	4.7	2.7	1.1	3.4	2.5	1.6
West urban	M	223.149	224.431	226.558	227.837	3.0	1.5	.6	2.6	1.5	.9
Size A - More than 1,500,000	M	227.281	228.444	230.707	231.808	3.0	1.5	.5	2.7	1.5	1.0
Size B/C - 50,000 to 1,500,000 ³	M	134.917	135.826	137.200	138.174	3.0	1.7	.7	2.5	1.7	1.0
Size classes											
A ⁴	M	201.059	201.974	203.833	204.963	3.0	1.5	.6	2.6	1.4	.9
B/C ³	M	136.260	136.960	138.404	139.413	3.3	1.8	.7	2.8	1.6	1.1
D	M	213.417	214.862	216.988	218.920	3.8	1.9	.9	2.8	1.7	1.0
Selected local areas⁵											
Chicago-Gary-Kenosha, IL-IN-WI	M	215.155	216.192	217.880	218.762	2.7	1.2	.4	2.3	1.3	.8
Los Angeles-Riverside-Orange County, CA ...	M	228.652	229.729	232.241	233.319	3.3	1.6	.5	3.0	1.6	1.1
New York-Northern N.J.-Long Island, NY-NJ-CT-PA	M	242.639	243.832	245.617	246.489	2.5	1.1	.4	2.3	1.2	.7
Boston-Brockton-Nashua, MA-NH-ME-CT	1	239.814	-	242.787	-	-	-	-	2.0	1.2	-
Cleveland-Akron, OH	1	207.587	-	209.372	-	-	-	-	2.8	.9	-
Dallas-Fort Worth, TX	1	203.199	-	206.967	-	-	-	-	2.5	1.9	-
Washington-Baltimore, DC-MD-VA-WV ⁶	1	144.327	-	146.044	-	-	-	-	3.0	1.2	-
Atlanta, GA	2	-	205.744	-	209.215	2.5	1.7	-	-	-	-
Detroit-Ann Arbor-Flint, MI	2	-	206.816	-	211.673	3.1	2.3	-	-	-	-
Houston-Galveston-Brazoria, TX	2	-	197.224	-	201.624	3.9	2.2	-	-	-	-
Miami-Fort Lauderdale, FL	2	-	227.451	-	231.503	4.0	1.8	-	-	-	-
Philadelphia-Wilmington-Atlantic City, PA-NJ-DE-MD	2	-	230.878	-	233.143	2.5	1.0	-	-	-	-
San Francisco-Oakland-San Jose, CA	2	-	229.981	-	234.121	2.8	1.8	-	-	-	-
Seattle-Tacoma-Bremerton, WA	2	-	229.482	-	231.314	2.1	.8	-	-	-	-

¹ Foods, fuels, and several other items priced every month in all areas; most other goods and services priced as indicated:

M - Every month.

1 - January, March, May, July, September, and November.

2 - February, April, June, August, October, and December.

² Regions defined as the four Census regions. See technical notes.

³ Indexes on a December 1996=100 base.

⁴ Indexes on a December 1986=100 base.

⁵ In addition, the following metropolitan areas are published semiannually and appear in Tables 34 and 39 of the January and July issues of the CPI Detailed Report: Anchorage, AK; Cincinnati-Hamilton, OH-KY-IN; Denver-Boulder-Greeley, CO; Honolulu, HI; Kansas City, MO-KS; Milwaukee-Racine, WI; Minneapolis-St. Paul, MN-WI; Phoenix-Mesa, AZ; Pittsburgh, PA; Portland-Salem, OR-WA; St. Louis, MO-IL; San Diego, CA;

Tampa-St. Petersburg-Clearwater, FL.

⁶ Indexes on a November 1996=100 base.

- Data not available.

NOTE: Local area indexes are byproducts of the national CPI program. Each local index has a smaller sample size than the national index and is, therefore, subject to substantially more sampling and other measurement error. As a result, local area indexes show greater volatility than the national index, although their long-term trends are similar. Therefore, the Bureau of Labor Statistics strongly urges users to consider adopting the national average CPI for use in their escalator clauses.

NOTE: Index applies to a month as a whole, not to any specific date.

Table 4. Consumer Price Index for Urban Wage Earners and Clerical Workers (CPI-W): U.S. city average, by expenditure category and commodity and service group

(1982-84=100, unless otherwise noted)

CPI-W Expenditure category	Relative importance, December 2010	Unadjusted indexes		Unadjusted percent change to Apr. 2011 from—		Seasonally adjusted percent change from—		
		Mar. 2011	Apr. 2011	Apr. 2010	Mar. 2011	Jan. to Feb.	Feb. to Mar.	Mar. to Apr.
All items	100.000	220.024	221.743	3.6	0.8	0.6	0.6	0.5
All items (1967=100)	-	655.385	660.503	-	-	-	-	-
Food and beverages	16.401	224.825	225.667	3.2	.4	.5	.7	.5
Food	15.315	224.577	225.439	3.3	.4	.6	.8	.5
Food at home	8.906	222.391	223.245	4.1	.4	.9	1.1	.5
Cereals and bakery products	1.236	256.227	256.912	2.3	.3	.1	.6	.2
Meats, poultry, fish, and eggs	2.227	218.848	220.753	7.7	.9	1.2	1.2	1.1
Dairy and related products ¹917	205.163	208.951	6.6	1.8	.6	1.4	1.8
Fruits and vegetables	1.219	288.168	284.147	2.7	-1.4	2.4	2.0	-1.3
Nonalcoholic beverages and beverage materials	1.091	164.583	165.553	2.4	.6	.1	.9	1.2
Other food at home	2.217	193.787	194.281	2.1	.3	.6	.9	.3
Sugar and sweets ¹324	204.408	202.613	1.5	-9	.8	.5	-9
Fats and oils258	214.457	214.363	8.0	.0	1.0	2.6	.7
Other foods	1.635	206.624	207.711	1.3	.5	.5	.7	.4
Other miscellaneous foods ^{1 2}463	122.850	123.797	.9	.8	.4	1.0	.8
Food away from home ¹	6.409	229.293	230.174	2.1	.4	.1	.3	.4
Other food away from home ^{1 2}326	162.850	163.275	2.6	.3	.7	.1	.3
Alcoholic beverages	1.086	227.022	227.552	1.9	.2	.2	.2	.4
Housing	39.228	214.323	214.523	1.0	.1	.3	.1	.2
Shelter	29.811	244.270	244.420	1.0	.1	.2	.1	.1
Rent of primary residence ³	8.396	250.445	250.579	1.3	.1	.1	.1	.1
Lodging away from home ²436	138.131	138.699	2.1	.4	.2	.8	.4
Owners' equivalent rent of residences ^{3 4}	20.672	234.018	234.133	.9	.0	.2	.1	.1
Owners' equivalent rent of primary residence ^{3 4}	19.942	234.015	234.127	.9	.0	.2	.1	.1
Tenants' and household insurance ^{1 2}306	126.914	127.654	1.4	.6	.3	-.9	.6
Fuels and utilities	5.633	214.774	215.338	2.4	.3	1.0	.5	.6
Household energy	4.476	187.561	188.078	1.7	.3	1.1	.5	.7
Fuel oil and other fuels ¹301	341.440	347.371	23.7	1.7	3.7	4.4	1.7
Energy services ³	4.175	188.985	189.281	.2	.2	.9	.2	.6
Water and sewer and trash collection services ²	1.157	178.016	178.392	5.1	.2	.7	.5	.4
Household furnishings and operations	3.784	120.765	120.873	-.9	.1	.0	.0	.2
Household operations ^{1 2}364	152.965	153.923	1.0	.6	.1	-.5	.6
Apparel	3.668	120.091	121.140	-.1	.9	-.7	-.6	.3
Men's and boys' apparel921	112.360	113.477	-.1	1.0	-.8	-1.2	.2
Women's and girls' apparel	1.502	108.551	109.589	-.2	1.0	-1.0	-1.0	.8
Infants' and toddlers' apparel280	114.446	115.274	-4.0	.7	-1.7	.1	.3
Footwear750	128.077	128.602	-.4	.4	-.2	.0	-.4
Transportation	19.418	211.774	218.352	12.9	3.1	2.0	2.4	1.6
Private transportation	18.631	208.361	215.044	13.1	3.2	2.0	2.5	1.6
New and used motor vehicles ²	6.914	97.405	98.172	2.5	.8	.5	.8	.9
New vehicles	3.320	141.899	142.475	2.4	.4	1.0	.8	.7
Used cars and trucks	3.003	145.014	146.907	3.3	1.3	.1	.8	1.2
Motor fuel	6.470	305.066	327.663	33.2	7.4	4.8	5.6	3.2
Gasoline (all types)	6.193	304.224	327.095	33.2	7.5	4.7	5.6	3.3
Motor vehicle parts and equipment ¹479	140.693	141.505	4.1	.6	.3	.0	.6
Motor vehicle maintenance and repair ¹	1.184	253.391	253.990	1.6	.2	.1	-.1	.2
Public transportation787	266.726	268.501	8.9	.7	2.0	1.1	.3
Medical care	5.355	399.516	400.683	3.0	.3	.5	.2	.4
Medical care commodities ¹	1.318	314.190	315.798	3.2	.5	.7	.5	.5
Medical care services	4.038	424.516	425.450	2.9	.2	.4	.1	.3
Professional services	2.220	338.225	338.558	2.5	.1	.4	.1	.1

See footnotes at end of table.

Table 4. Consumer Price Index for Urban Wage Earners and Clerical Workers (CPI-W): U.S. city average, by expenditure category and commodity and service group-Continued

(1982-84=100, unless otherwise noted)

CPI-W Expenditure category	Relative importance, December 2010	Unadjusted indexes		Unadjusted percent change to Apr. 2011 from—		Seasonally adjusted percent change from—		
		Mar. 2011	Apr. 2011	Apr. 2010	Mar. 2011	Jan. to Feb.	Feb. to Mar.	Mar. to Apr.
Hospital and related services	1.414	637.216	640.223	5.7	0.5	0.6	0.2	0.5
Recreation ²	5.862	109.848	109.933	-.4	.1	.4	.1	.0
Video and audio ²	1.959	99.398	99.523	-1.0	.1	.5	.1	-.1
Education and communication ²	6.118	125.047	124.993	.3	.0	.1	.1	.0
Education ²	2.380	201.588	201.611	3.8	.0	.3	.3	.3
Educational books and supplies199	527.623	526.990	4.5	-.1	.1	.4	.3
Tuition, other school fees, and childcare	2.181	566.335	566.469	3.7	.0	.3	.3	.3
Communication ²	3.738	86.124	86.057	-1.7	-.1	.0	-.1	-.1
Information and information processing ²	3.605	83.793	83.719	-2.0	-.1	-.1	-.1	-.1
Telephone services ^{1 2}	2.823	100.701	100.643	-1.5	-.1	-.1	-.1	-.1
Information technology, hardware and services ⁵782	9.729	9.710	-3.7	-.2	.2	-.2	-.3
Personal computers and peripheral equipment ⁶208	71.404	71.220	-9.2	-.3	-.5	-1.8	-.5
Other goods and services	3.950	415.318	415.578	2.4	.1	.2	-.1	.0
Tobacco and smoking products ¹	1.450	835.368	832.003	4.9	-.4	.2	.1	-.4
Personal care	2.500	205.738	206.422	1.0	.3	.2	-.2	.2
Personal care products ¹717	161.667	162.088	.3	.3	.3	-.2	.3
Personal care services ¹572	230.252	230.597	.3	.1	.1	-.1	.1
Miscellaneous personal services	1.027	360.881	362.774	2.3	.5	.2	.0	.4
Commodity and service group								
Commodities	43.898	186.832	189.816	6.5	1.6	1.1	1.3	.9
Food and beverages	16.401	224.825	225.667	3.2	.4	.5	.7	.5
Commodities less food and beverages	27.497	165.647	169.461	8.4	2.3	1.4	1.6	1.1
Nondurables less food and beverages	17.244	219.775	226.985	12.9	3.3	1.8	2.1	1.3
Apparel	3.668	120.091	121.140	-.1	.9	-.7	-.6	.3
Nondurables less food, beverages, and apparel	13.576	286.361	297.497	16.6	3.9	2.0	3.4	1.5
Durables	10.253	113.063	113.678	1.1	.5	.5	.5	.6
Services	56.102	259.108	259.419	1.4	.1	.3	.1	.2
Rent of shelter ⁴	29.504	235.413	235.544	1.0	.1	.1	.0	.1
Tenants' and household insurance ^{1 2}306	126.914	127.654	1.4	.6	.3	-.9	.6
Energy services ³	4.175	188.985	189.281	.2	.2	.9	.2	.6
Water and sewer and trash collection services ²	1.157	178.016	178.392	5.1	.2	.7	.5	.4
Household operations ^{1 2}364	152.965	153.923	1.0	.6	.1	-.5	.6
Transportation services	5.994	266.383	267.258	3.4	.3	.5	.4	.3
Medical care services	4.038	424.516	425.450	2.9	.2	.4	.1	.3
Other services	10.563	298.010	298.262	1.0	.1	.2	.1	.1
Special indexes								
All items less food	84.685	219.027	220.894	3.7	.9	.6	.6	.5
All items less shelter	70.189	213.549	215.853	4.8	1.1	.8	.9	.7
All items less medical care	94.645	212.722	214.442	3.7	.8	.6	.7	.5
Commodities less food	28.583	167.826	171.564	8.2	2.2	1.3	1.6	1.1
Nondurables less food	18.329	220.431	227.290	12.2	3.1	1.7	2.0	1.3
Nondurables less food and apparel	14.662	280.056	290.247	15.5	3.6	1.9	3.2	1.4
Nondurables	33.644	223.402	227.661	8.1	1.9	1.2	1.6	1.0
Services less rent of shelter ⁴	26.598	254.057	254.540	1.9	.2	.4	.2	.3
Services less medical care services	52.065	247.622	247.899	1.3	.1	.2	.1	.2
Energy	10.946	244.773	256.400	20.0	4.8	3.4	3.7	2.3
All items less energy	89.054	218.011	218.537	1.7	.2	.3	.2	.3
All items less food and energy	73.739	217.067	217.525	1.3	.2	.2	.1	.2
Commodities less food and energy commodities	21.812	146.835	147.472	.9	.4	.2	.1	.4
Energy commodities	6.771	308.083	330.157	32.8	7.2	4.8	5.6	3.1
Services less energy services	51.927	266.766	267.077	1.5	.1	.2	.1	.1
Purchasing power of the consumer dollar (1982-84=\$1.00)	-	\$.454	\$.451	-	-	-	-	-
Purchasing power of the consumer dollar (1967=\$1.00)	-	\$.153	\$.151	-	-	-	-	-

¹ Not seasonally adjusted.

² Indexes on a December 1997=100 base.

³ This index series was calculated using a Laspeyres estimator. All other item stratum index series were calculated using a geometric means estimator.

⁴ Indexes on a December 1984=100 base

⁵ Indexes on a December 1988=100 base.

⁶ Indexes on a December 2007=100 base.

- Data not available.

NOTE: Index applies to a month as a whole, not to any specific date.

Table 5. Consumer Price Index for Urban Wage Earners and Clerical Workers (CPI-W): Seasonally adjusted U.S. city average, by expenditure category and commodity and service group

(1982-84=100, unless otherwise noted)

Expenditure category	Seasonally adjusted indexes				Seasonally adjusted annual rate percent change for					
	Jan. 2011	Feb. 2011	Mar. 2011	Apr. 2011	3 months ended—				6 months ended—	
					July 2010	Oct. 2010	Jan. 2011	Apr. 2011	Oct. 2010	Apr. 2011
All items	217.344	218.702	220.122	221.212	-0.2	3.0	4.4	7.3	1.4	5.9
Food and beverages	221.853	223.029	224.691	225.708	.2	2.3	3.2	7.1	1.3	5.1
Food	221.486	222.716	224.464	225.485	.0	2.4	3.4	7.4	1.2	5.4
Food at home	217.871	219.728	222.200	223.322	-4	1.9	4.7	10.4	.8	7.5
Cereals and bakery products	254.540	254.751	256.158	256.620	-2.1	2.3	6.1	3.3	.0	4.7
Meats, poultry, fish, and eggs	213.732	216.300	218.838	221.143	7.5	4.9	4.3	14.6	6.2	9.3
Dairy and related products ¹	201.170	202.335	205.163	208.951	3.8	4.3	2.6	16.4	4.1	9.3
Fruits and vegetables	275.896	282.396	288.166	284.305	-14.3	2.2	12.6	12.8	-6.4	12.7
Nonalcoholic beverages and beverage materials	162.150	162.352	163.753	165.778	-1.4	-2.1	4.2	9.3	-1.8	6.7
Other food at home	190.804	191.912	193.640	194.133	.2	-2	1.3	7.2	.0	4.2
Sugar and sweets ¹	201.824	203.373	204.408	202.613	.4	3.3	.7	1.6	1.8	1.1
Fats and oils	207.171	209.238	214.678	216.271	.0	3.9	10.4	18.8	1.9	14.5
Other foods	203.965	204.938	206.374	207.193	.3	-1.4	.1	6.5	-6	3.2
Other miscellaneous foods ^{1 2}	121.161	121.605	122.850	123.797	-1.6	-1.3	-2.1	9.0	-1.5	3.3
Food away from home ¹	228.279	228.596	229.293	230.174	.6	3.1	1.5	3.4	1.8	2.4
Other food away from home ^{1 2}	161.635	162.728	162.850	163.275	1.6	3.2	1.6	4.1	2.4	2.9
Alcoholic beverages	225.786	226.181	226.591	227.525	2.8	1.2	.6	3.1	2.0	1.8
Housing	213.712	214.274	214.579	214.943	-.1	.5	1.3	2.3	.2	1.8
Shelter	243.522	243.891	244.098	244.287	.8	.5	1.5	1.3	.6	1.4
Rent of primary residence ³	249.556	249.881	250.220	250.444	.6	.5	2.5	1.4	.5	2.0
Lodging away from home ²	134.166	134.483	135.526	136.073	17.5	-8.0	-4.8	5.8	4.0	.4
Owners' equivalent rent of residences ^{3 4}	233.453	233.818	233.967	234.102	.5	.6	1.2	1.1	.6	1.2
Owners' equivalent rent of primary residence ^{3 4}	233.452	233.819	233.963	234.097	.5	.6	1.2	1.1	.6	1.2
Tenants' and household insurance ^{1 2}	127.690	128.035	126.914	127.654	3.5	3.8	-1.4	-.1	3.6	-7
Fuels and utilities	214.330	216.540	217.690	219.052	-3.0	1.8	1.9	9.1	-6	5.4
Household energy	187.675	189.762	190.781	192.083	-4.8	1.2	1.1	9.7	-1.8	5.3
Fuel oil and other fuels ¹	315.348	326.950	341.440	347.371	-22.7	25.3	64.3	47.2	-1.6	55.6
Energy services ³	190.284	192.035	192.493	193.645	-3.5	-2	-2.3	7.3	-1.9	2.4
Water and sewer and trash collection services ²	175.803	177.057	177.954	178.669	4.4	4.3	5.0	6.7	4.3	5.8
Household furnishings and operations	120.479	120.458	120.458	120.697	-2.1	-1.6	-.7	.7	-1.8	.0
Household operations ^{1 2}	153.583	153.703	152.965	153.923	3.5	-2.3	2.3	.9	.5	1.6
Apparel	119.268	118.404	117.667	118.059	3.4	-3.5	3.8	-4.0	-.1	-2
Men's and boys' apparel	112.711	111.786	110.496	110.770	6.2	-3.2	4.0	-6.7	1.4	-1.5
Women's and girls' apparel	107.067	106.045	104.954	105.750	2.1	-3.6	6.0	-4.8	-.8	.5
Infants' and toddlers' apparel	114.477	112.572	112.693	112.979	9.2	-16.9	-1.4	-5.1	-4.8	-3.3
Footwear	127.404	127.194	127.212	126.695	2.1	-.5	-.9	-2.2	.8	-1.6
Transportation	203.697	207.843	212.833	216.214	-3.9	13.7	16.6	26.9	4.5	21.7
Private transportation	200.277	204.353	209.373	212.808	-4.1	14.2	16.5	27.5	4.6	21.9
New and used motor vehicles ²	96.217	96.700	97.462	98.310	2.7	-.1	-1.2	9.0	1.3	3.8
New vehicles	138.691	140.067	141.132	142.121	.9	.4	-1.7	10.3	.6	4.1
Used cars and trucks	144.598	144.792	145.911	147.635	6.0	-.2	-.9	8.7	2.9	3.8
Motor fuel	278.809	292.327	308.827	318.736	-17.1	44.6	53.7	70.8	9.5	62.1
Gasoline (all types)	278.404	291.392	307.739	318.025	-17.4	45.2	53.9	70.3	9.5	61.9
Motor vehicle parts and equipment ¹	140.289	140.763	140.693	141.505	3.9	2.8	6.3	3.5	3.3	4.9
Motor vehicle maintenance and repair ¹	253.310	253.524	253.391	253.990	.4	3.9	1.2	1.1	2.2	1.1
Public transportation	260.787	266.108	268.996	269.886	.6	2.1	19.4	14.7	1.4	17.0
Medical care	395.575	397.444	398.099	399.544	1.7	4.0	2.2	4.1	2.8	3.1
Medical care commodities ¹	310.488	312.764	314.190	315.798	-.5	2.3	3.9	7.0	.9	5.4
Medical care services	420.595	422.224	422.517	423.843	2.5	4.5	1.7	3.1	3.5	2.4
Professional services	335.757	337.029	337.449	337.866	2.9	2.6	2.1	2.5	2.7	2.3

See footnotes at end of table.

Table 5. Consumer Price Index for Urban Wage Earners and Clerical Workers (CPI-W): Seasonally adjusted U.S. city average, by expenditure category and commodity and service group-Continued

(1982-84=100, unless otherwise noted)

CPI-W	Seasonally adjusted indexes				Seasonally adjusted annual rate percent change for					
	Jan. 2011	Feb. 2011	Mar. 2011	Apr. 2011	3 months ended—			6 months ended—		
					July 2010	Oct. 2010	Jan. 2011	Apr. 2011	Oct. 2010	Apr. 2011
Expenditure category										
Hospital and related services	627.317	630.894	632.454	635.892	4.3	9.9	3.3	5.6	7.1	4.4
Recreation ²	109.345	109.742	109.798	109.747	-8	-1.5	-6	1.5	-1.1	.4
Video and audio ²	98.510	99.020	99.167	99.080	-2.6	-9	-2.8	2.3	-1.8	-3
Education and communication ²	124.959	125.081	125.167	125.225	1.3	-1	-6	.9	.6	.1
Education ²	200.978	201.628	202.290	202.814	4.4	1.1	5.9	3.7	2.8	4.8
Educational books and supplies	524.385	524.817	526.817	528.629	3.0	.7	11.3	3.3	1.8	7.2
Tuition, other school fees, and childcare	564.783	566.738	568.569	569.997	4.6	1.2	5.4	3.7	2.9	4.6
Communication ²	86.192	86.152	86.067	85.989	-5	-9	-4.5	-9	-7	-2.8
Information and information processing ²	83.864	83.822	83.735	83.651	-5	-9	-5.3	-1.0	-7	-3.2
Telephone services ^{1 2}	100.882	100.768	100.701	100.643	.2	-2	-4.8	-9	.0	-2.9
Information technology, hardware and services ⁵	9.704	9.722	9.699	9.674	-3.1	-3.4	-6.9	-1.2	-3.3	-4.1
Personal computers and peripheral equipment ⁶	72.178	71.808	70.542	70.196	-5.5	-3.9	-16.2	-10.5	-4.7	-13.4
Other goods and services	414.533	415.238	414.916	414.900	6.8	-2	2.9	.4	3.2	1.6
Tobacco and smoking products ¹	832.904	834.343	835.368	832.003	16.5	1.1	3.2	-.4	8.6	1.3
Personal care	205.476	205.822	205.424	205.891	1.7	-1.0	2.7	.8	.3	1.8
Personal care products ¹	161.462	161.974	161.667	162.088	-5	-3.0	3.3	1.6	-1.8	2.4
Personal care services ¹	230.140	230.418	230.252	230.597	1.6	-2.0	.9	.8	-.2	.8
Miscellaneous personal services	360.275	360.922	360.899	362.235	1.9	2.1	3.1	2.2	2.0	2.6
Commodity and service group										
Commodities	182.495	184.454	186.856	188.512	-1.9	5.8	8.5	13.9	1.9	11.1
Food and beverages	221.853	223.029	224.691	225.708	.2	2.3	3.2	7.1	1.3	5.1
Commodities less food and beverages	160.848	163.087	165.737	167.620	-3.2	7.9	11.7	17.9	2.2	14.8
Nondurables less food and beverages	211.319	215.122	219.564	222.388	-4.9	13.5	22.7	22.7	3.9	22.7
Apparel	119.268	118.404	117.667	118.059	3.4	-3.5	3.8	-4.0	-1	-2
Nondurables less food, beverages, and apparel	273.060	278.583	287.991	292.312	-7.1	19.7	26.5	31.3	5.5	28.9
Durables	111.840	112.365	112.981	113.705	1.3	-1.4	-2.1	6.8	-1	2.3
Services	258.262	258.975	259.346	259.786	1.0	.9	1.3	2.4	1.0	1.8
Rent of shelter ⁴	234.950	235.112	235.189	235.375	.2	1.1	1.9	.7	.7	1.3
Tenants' and household insurance ^{1 2}	127.690	128.035	126.914	127.654	3.5	3.8	-1.4	-1	3.6	-7
Energy services ³	190.284	192.035	192.493	193.645	-3.5	-2	-2.3	7.3	-1.9	2.4
Water and sewer and trash collection services ²	175.803	177.057	177.954	178.669	4.4	4.3	5.0	6.7	4.3	5.8
Household operations ^{1 2}	153.583	153.703	152.965	153.923	3.5	-2.3	2.3	.9	.5	1.6
Transportation services	264.463	265.678	266.766	267.612	2.2	3.1	3.5	4.8	2.6	4.1
Medical care services	420.595	422.224	422.517	423.843	2.5	4.5	1.7	3.1	3.5	2.4
Other services	297.247	297.790	298.163	298.388	2.1	-2	.6	1.5	.9	1.1
Special indexes										
All items less food	216.422	217.800	219.161	220.262	-3	3.1	4.6	7.3	1.4	5.9
All items less shelter	210.141	211.871	213.745	215.173	-7	4.1	5.7	9.9	1.7	7.8
All items less medical care	210.104	211.434	212.864	213.934	-3	3.0	4.5	7.5	1.3	6.0
Commodities less food	163.108	165.304	167.903	169.766	-3.0	7.7	11.3	17.4	2.2	14.3
Nondurables less food	212.360	215.973	220.224	223.009	-4.5	12.4	21.5	21.6	3.6	21.6
Nondurables less food and apparel	267.850	272.891	281.517	285.598	-6.4	17.8	24.9	29.3	5.0	27.1
Nondurables	217.332	219.926	223.418	225.644	-2.9	7.3	13.0	16.2	2.1	14.6
Services less rent of shelter ⁴	253.273	254.399	254.803	255.550	.9	1.5	1.4	3.6	1.2	2.5
Services less medical care services	247.082	247.660	247.897	248.319	.6	1.0	1.6	2.0	.8	1.8
Energy	231.611	239.431	248.232	253.853	-11.9	24.0	29.7	44.3	4.5	36.8
All items less energy	216.590	217.170	217.702	218.248	1.2	.8	1.6	3.1	1.0	2.4
All items less food and energy	215.982	216.431	216.717	217.167	1.5	.4	1.3	2.2	1.0	1.7
Commodities less food and energy commodities	145.784	146.034	146.215	146.774	1.6	-9	.4	2.7	.3	1.6
Energy commodities	281.694	295.209	311.719	321.527	-17.3	43.7	54.2	69.7	9.0	61.8
Services less energy services	265.675	266.270	266.630	266.988	1.4	1.0	1.6	2.0	1.2	1.8

¹ Not seasonally adjusted.

² Indexes on a December 1997=100 base.

³ This index series was calculated using a Laspeyres estimator. All other item stratum index series were calculated using a geometric means estimator.

⁴ Indexes on a December 1984=100 base

⁵ Indexes on a December 1988=100 base.

⁶ Indexes on a December 2007=100 base.

NOTE: Index applies to a month as a whole, not to any specific date.

Table 6. Consumer Price Index for Urban Wage Earners and Clerical Workers (CPI-W): Selected areas, all items index

(1982-84=100, unless otherwise noted)

CPI-W	Pricing schedule 1	All items									
		Indexes				Percent change to Apr.2011 from—			Percent change to Mar.2011 from—		
		Jan. 2011	Feb. 2011	Mar. 2011	Apr. 2011	Apr. 2010	Feb. 2011	Mar. 2011	Mar. 2010	Jan. 2011	Feb. 2011
U.S. city average	M	216.400	217.535	220.024	221.743	3.6	1.9	0.8	3.0	1.7	1.1
Region and area size²											
Northeast urban	M	233.914	235.109	237.377	238.756	3.3	1.6	.6	2.9	1.5	1.0
Size A - More than 1,500,000	M	233.851	235.230	237.239	238.390	3.0	1.3	.5	2.8	1.4	.9
Size B/C - 50,000 to 1,500,000 ³	M	142.196	142.691	144.395	145.520	3.8	2.0	.8	3.2	1.5	1.2
Midwest urban	M	206.258	206.981	209.094	210.991	3.7	1.9	.9	3.0	1.4	1.0
Size A - More than 1,500,000	M	205.878	206.516	208.740	210.508	3.7	1.9	.8	3.0	1.4	1.1
Size B/C - 50,000 to 1,500,000 ³	M	135.277	135.841	137.189	138.552	3.8	2.0	1.0	3.0	1.4	1.0
Size D - Nonmetropolitan (less than 50,000)	M	205.648	206.306	208.108	209.987	3.8	1.8	.9	3.0	1.2	.9
South urban	M	211.216	212.416	215.272	217.234	3.9	2.3	.9	3.2	1.9	1.3
Size A - More than 1,500,000	M	213.058	214.129	216.680	218.615	3.6	2.1	.9	2.9	1.7	1.2
Size B/C - 50,000 to 1,500,000 ³	M	135.207	135.919	137.789	138.962	3.9	2.2	.9	3.3	1.9	1.4
Size D - Nonmetropolitan (less than 50,000)	M	217.200	219.352	223.059	225.869	5.1	3.0	1.3	3.6	2.7	1.7
West urban	M	217.995	219.368	221.830	223.268	3.4	1.8	.6	3.0	1.8	1.1
Size A - More than 1,500,000	M	220.564	221.848	224.576	225.833	3.5	1.8	.6	3.2	1.8	1.2
Size B/C - 50,000 to 1,500,000 ³	M	134.900	135.845	137.331	138.362	3.3	1.9	.8	2.7	1.8	1.1
Size classes											
A ⁴	M	200.022	201.033	203.220	204.607	3.4	1.8	.7	3.0	1.6	1.1
B/C ³	M	136.112	136.808	138.471	139.645	3.8	2.1	.8	3.1	1.7	1.2
D	M	212.005	213.495	215.928	218.220	4.2	2.2	1.1	3.2	1.9	1.1
Selected local areas⁵											
Chicago-Gary-Kenosha, IL-IN-WI	M	209.016	210.106	212.256	213.633	3.5	1.7	.6	2.8	1.6	1.0
Los Angeles-Riverside-Orange County, CA ...	M	221.540	222.814	225.770	227.051	3.9	1.9	.6	3.5	1.9	1.3
New York-Northern N.J.-Long Island, NY-NJ-CT-PA	M	238.396	239.750	241.667	242.697	2.9	1.2	.4	2.7	1.4	.8
Boston-Brockton-Nashua, MA-NH-ME-CT	1	240.540	-	244.324	-	-	-	-	2.5	1.6	-
Cleveland-Akron, OH	1	199.568	-	201.146	-	-	-	-	3.2	.8	-
Dallas-Fort Worth, TX	1	206.954	-	211.227	-	-	-	-	2.9	2.1	-
Washington-Baltimore, DC-MD-VA-WV ⁶	1	144.556	-	146.572	-	-	-	-	3.4	1.4	-
Atlanta, GA	2	-	204.611	-	208.356	2.6	1.8	-	-	-	-
Detroit-Ann Arbor-Flint, MI	2	-	202.849	-	208.217	3.6	2.6	-	-	-	-
Houston-Galveston-Brazoria, TX	2	-	195.677	-	200.997	4.4	2.7	-	-	-	-
Miami-Fort Lauderdale, FL	2	-	225.346	-	229.675	4.1	1.9	-	-	-	-
Philadelphia-Wilmington-Atlantic City, PA-NJ-DE-MD	2	-	231.306	-	233.441	2.7	.9	-	-	-	-
San Francisco-Oakland-San Jose, CA	2	-	226.638	-	231.600	3.5	2.2	-	-	-	-
Seattle-Tacoma-Bremerton, WA	2	-	225.790	-	228.313	2.7	1.1	-	-	-	-

¹ Foods, fuels, and several other items priced every month in all areas; most other goods and services priced as indicated:

M - Every month.

1 - January, March, May, July, September, and November.

2 - February, April, June, August, October, and December.

² Regions defined as the four Census regions. See technical notes.

³ Indexes on a December 1996=100 base.

⁴ Indexes on a December 1986=100 base.

⁵ In addition, the following metropolitan areas are published semiannually and appear in Tables 34 and 39 of the January and July issues of the CPI Detailed Report: Anchorage, AK; Cincinnati-Hamilton, OH-KY-IN; Denver-Boulder-Greeley, CO; Honolulu, HI; Kansas City, MO-KS; Milwaukee-Racine, WI; Minneapolis-St. Paul, MN-WI; Phoenix-Mesa, AZ; Pittsburgh, PA; Portland-Salem, OR-WA; St. Louis, MO-IL; San Diego, CA;

Tampa-St. Petersburg-Clearwater, FL.

⁶ Indexes on a November 1996=100 base.

- Data not available.

NOTE: Local area indexes are byproducts of the national CPI program. Each local index has a smaller sample size than the national index and is, therefore, subject to substantially more sampling and other measurement error. As a result, local area indexes show greater volatility than the national index, although their long-term trends are similar. Therefore, the Bureau of Labor Statistics strongly urges users to consider adopting the national average CPI for use in their escalator clauses.

NOTE: Index applies to a month as a whole, not to any specific date.

Table 7. Chained Consumer Price Index for All Urban Consumers (C-CPI-U): U.S. city average, by expenditure category and commodity and service group

(December 1999=100, unless otherwise noted)

C-CPI-U	Relative importance, 2007-2008	Unadjusted indexes		Unadjusted percent change to Apr. 2011 from—	
		Mar. 2011	Apr. 2011	Apr. 2010	Mar. 2011
Expenditure category					
All items	100.000	128.618	R129.408	2.9	0.6
Food and beverages	14.519	131.225	131.682	3.0	.3
Food	13.493	131.371	131.848	3.1	.4
Food at home	7.780	127.156	127.631	3.8	.4
Food away from home	5.712	137.136	137.614	2.1	.3
Alcoholic beverages	1.027	130.010	130.206	1.6	.2
Housing	42.074	128.982	R129.071	.8	.1
Shelter	32.119	132.169	132.241	.9	.1
Fuels and utilities	5.231	159.059	R159.248	2.2	.1
Household furnishings and operations	4.724	92.462	92.568	-1.3	.1
Apparel	3.772	90.915	91.583	-.3	.7
Transportation	17.199	142.121	145.823	11.6	2.6
Private transportation	16.013	142.885	146.817	11.8	2.8
Public transportation	1.186	132.342	133.188	9.2	.6
Medical care	6.294	153.840	154.243	2.6	.3
Medical care commodities	1.570	135.901	136.565	2.9	.5
Medical care services	4.723	160.419	160.719	2.6	.2
Recreation	6.625	102.508	102.570	-1.2	.1
Education and communication	6.288	112.691	112.667	.6	.0
Education	2.804	188.438	188.494	3.7	.0
Communication	3.484	71.732	71.688	-1.9	-.1
Other goods and services	3.229	140.404	142.309	2.8	1.4
Commodity and service group					
Services	59.383	136.799	R137.017	1.4	.2
Commodities	40.617	118.832	120.357	5.2	1.3
Durables	10.376	80.840	81.185	.0	.4
Nondurables	30.241	138.722	140.911	7.0	1.6
All items less food and energy	76.901	121.086	121.368	1.1	.2
Energy	9.606	205.843	R214.257	18.0	4.1

R Revised.

Indexes for 2011 are initial estimates. Indexes for 2010 are interim adjustments.

NOTE: Index applies to a month as a whole, not to any specific date.