



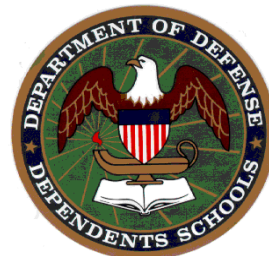
BAUMHOLDER HIGH SCHOOL

FRESHMAN

2013-2014
COURSE SELECTION

STUDENT LAST & FIRST NAME

Home of the
BUCS!



PARENT SIGNATURE

DATE

ACADEMICS

Place a next to each course that you plan to take.

ENGLISH	
LAE301	Language Arts 9
LAE371	Honors Literature 9 • linked with Honors World History 9 • by Teacher Recommendation
LAB COURSES	
RED305	Reading Lab
ENGLISH as a SECOND LANGUAGE	
LAAx01	• ESL Communication Starting/Emerging/Developing/Expanding/Bridging • Entrance to English

MATHEMATICS	
MAA301	Algebra I
MAG401	Geometry
LAB COURSES	
MAA305	Algebra I Lab

SCIENCE	
SCP302	Physics Applic
SCB401	Biology • this is a Science Honors course • by Teacher Recommendation

SOCIAL STUDIES	
SSW305	World History 9
SSW371	Honors World History 9 • linked with Honors Literature 9 • by Teacher Recommendation

FOREIGN LANGUAGE	
FLS301	Spanish I
FLS401	Spanish II
FLS501	Spanish III
GERMAN	
FLG301	German I
FLG401	German II
FLG501	German III
FRENCH	
FLF301	French I
FLF401	French II



ELECTIVES

PHYSICAL EDUCATION & HEALTH

- PEF301
- PEL301
- Personal Fitness
- Lifetime Sports

ART EDUCATION

FINE ARTS

ARA301	Fundamentals of Art
--------	---------------------

PERFORMING ARTS

DRA301	Drama-Theater
--------	---------------

MUI301	Beginning Band
--------	----------------

MUI302	Intermediate Band
--------	-------------------

MUI303	Advanced Band
--------	---------------

MUV302	Chorus
--------	--------

SPECIAL ELECTIVES

LAV301	AVID 9
--------	--------

AAY301	Yearbook Production <i>(teacher approval required)</i>
--------	---



CAREER & TECHNICAL EDUCATION

COMPUTER TECHNOLOGY

PTI405	Digital Media
--------	---------------

PTI407	Web Design
--------	------------

SOFTWARE CERTIFICATION

PTI303	Microsoft WORD
--------	----------------

PTI304	Microsoft POWERPOINT
--------	----------------------

PTI305	Microsoft ACCESS
--------	------------------

PTI306	Microsoft EXCEL
--------	-----------------

PTI307	Adobe PHOTOSHOP
--------	-----------------

AUDIO-VIDEO TECHNOLOGY

PTV301	Video Communications I
--------	------------------------

ENGINEERING TECHNOLOGY

PTE303	Engineering Drawing/CAD
--------	-------------------------

PTE501	Engineering Design/Tech I
--------	---------------------------

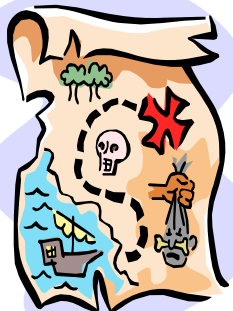
JUNIOR ROTC

VER301	Army JROTC I
--------	--------------

BUSINESS MANAGEMENT

PTB301	Business/Personal Finances
--------	----------------------------

PTB401	Management/Int'l Business
--------	---------------------------



ALTERNATE ELECTIVE COURSES

- 1
- 2
- 3

BUCS Rule!