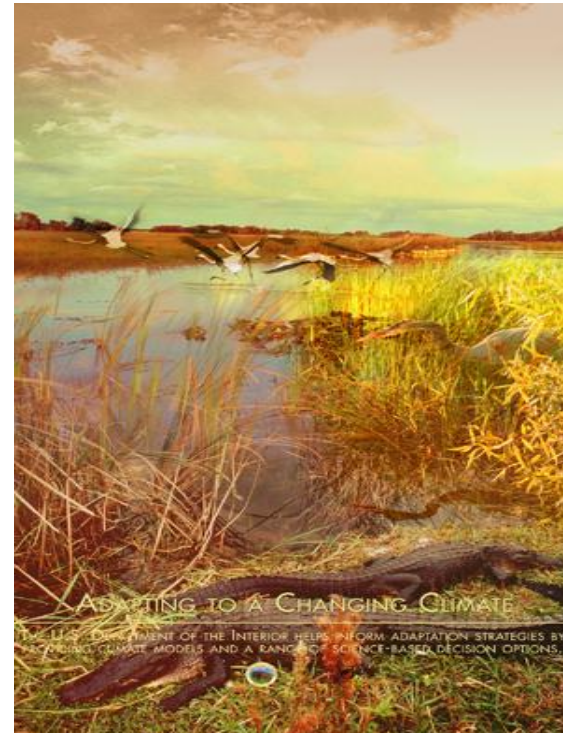


DOI Climate Science Centers

**Doug Beard, Director
National Climate Change & Wildlife
Science Center**

**CSC Webinars
March 18th, 2011**



Consultation and Development

Convened and assisted by: Wildlife Society (Mike Hutchins), Ecological Society of America (Cliff Duke), Meridian Institute (Tim Mealey)

December 2008 – National Workshop

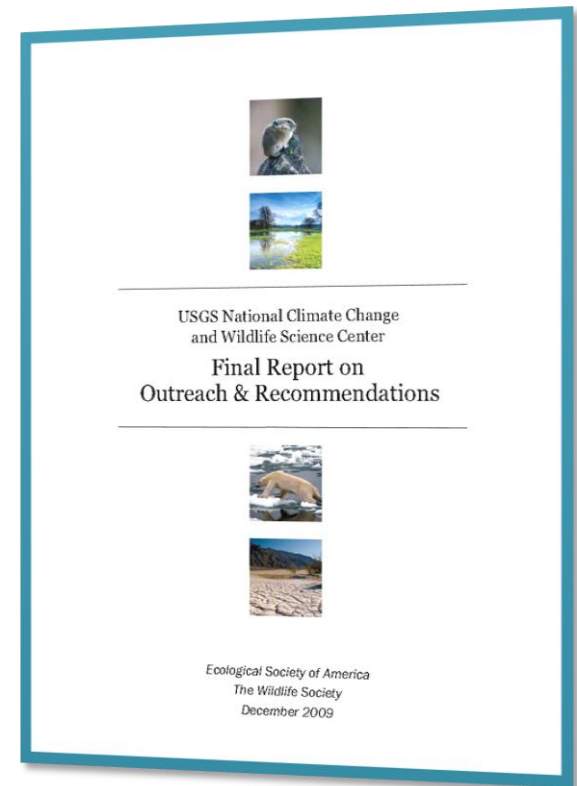
May 2009 – (Eastern region) Laurel, MD

June 2009 – (Western region) Seattle, WA

June 2009 – (Central region) Denver, CO

July 2009 – Meeting with national partners

Reports available at nccwsc.usgs.gov
(includes TWS-ESA final report)



Secretarial Order 3289

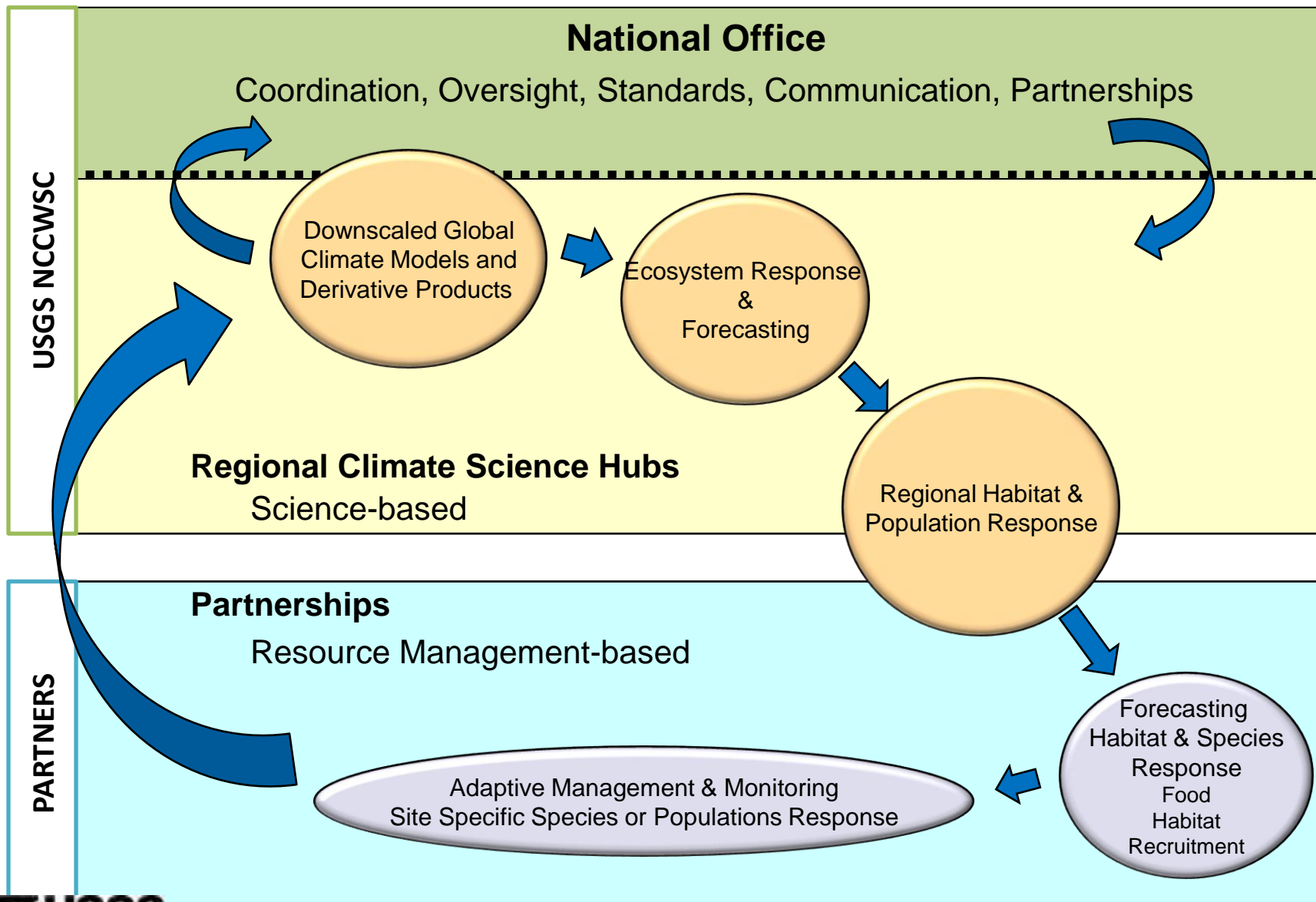
Addressing the Impacts of Climate Change on America's Water, Land, and Other Natural and Cultural Resources (9/14/09)

... the United States Geological Survey (USGS) has been developing regional science centers ... currently known as "regional hubs" of the National Climate Change and Wildlife Science Center...

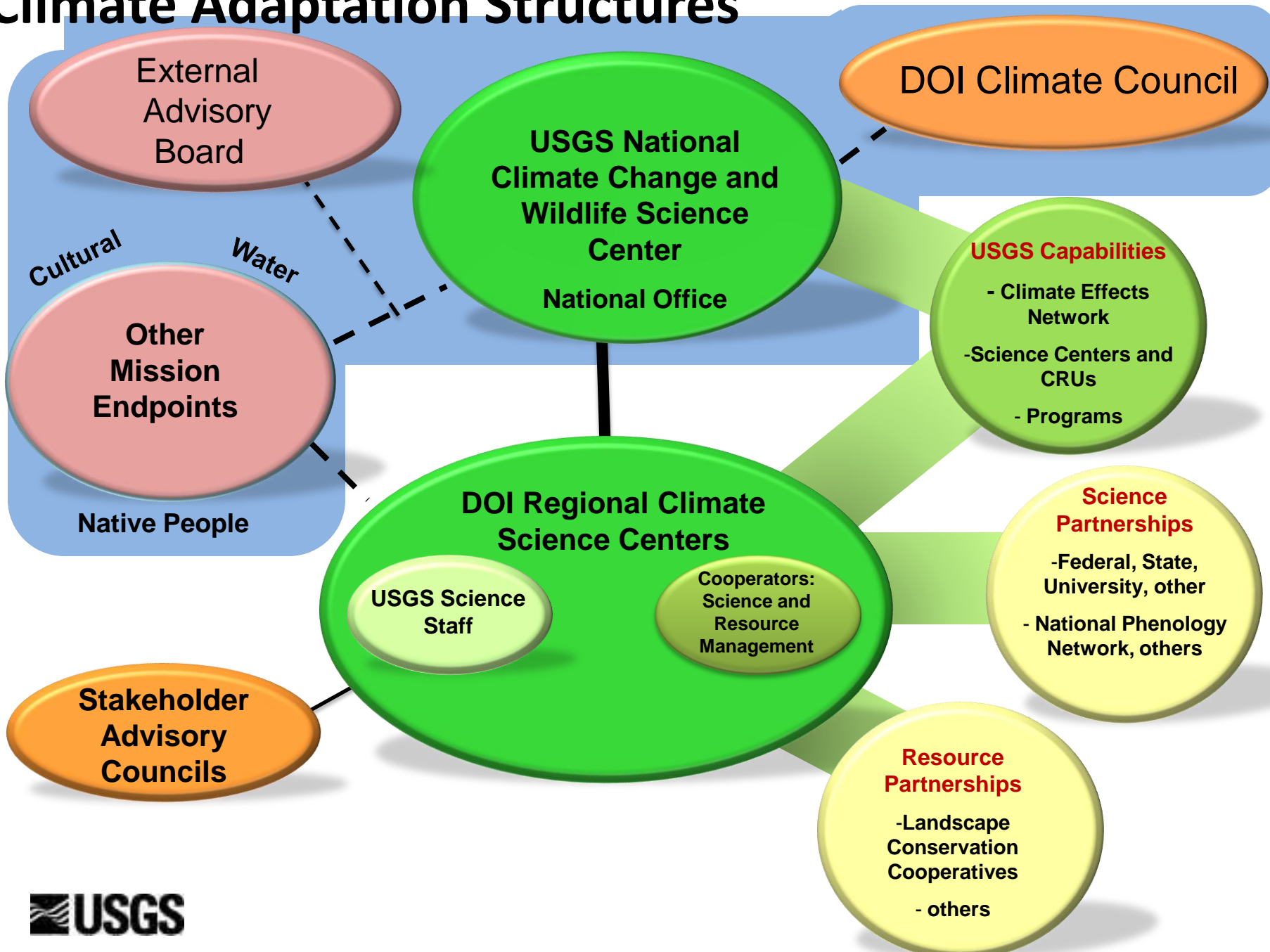
The **Climate Change & Energy Response Council** will work with USGS and other Department bureaus to rename these regional science centers as **Regional Climate Science Centers** and broaden their mandate ...

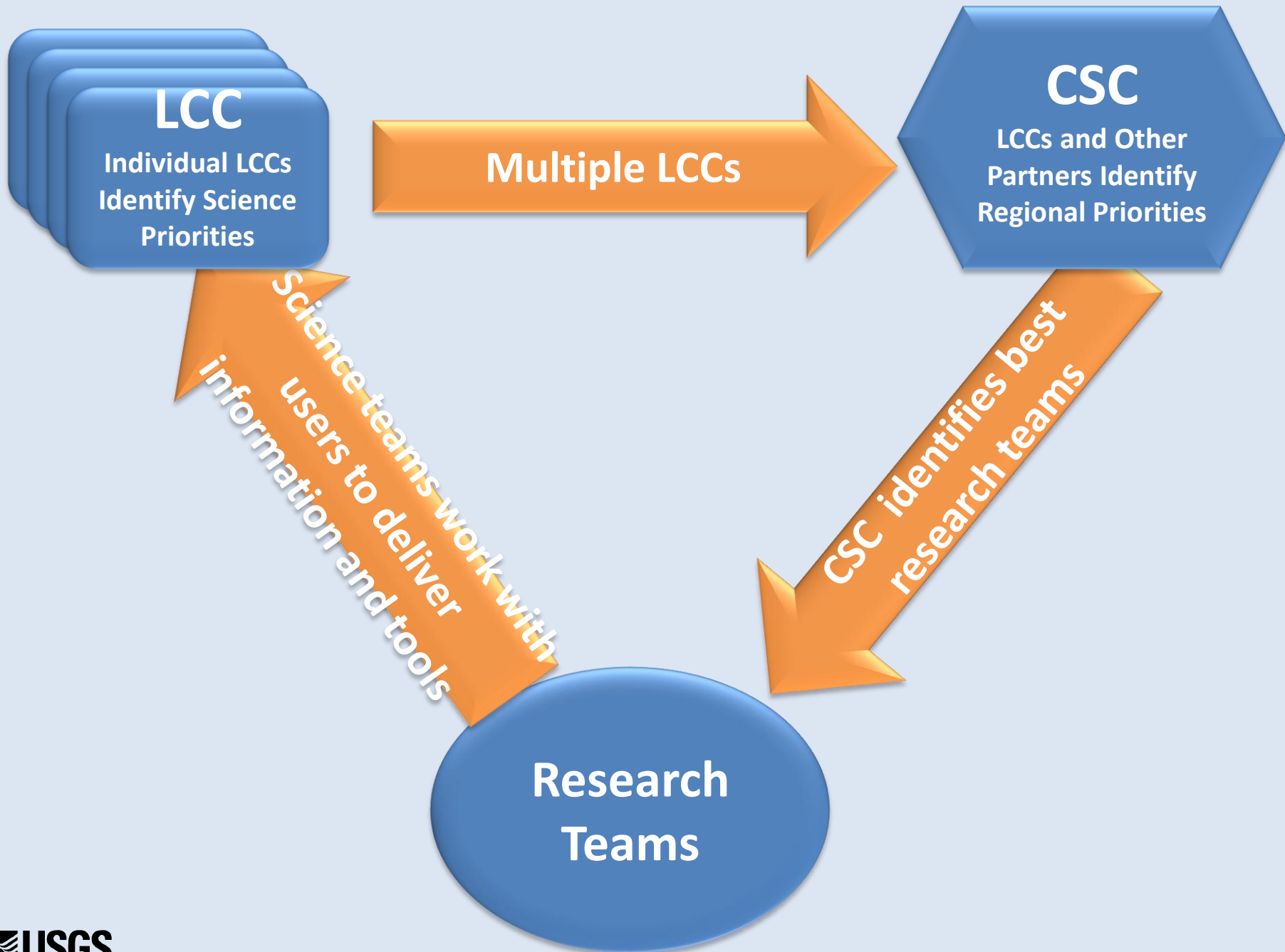


NCCWSC Science-Management Interface

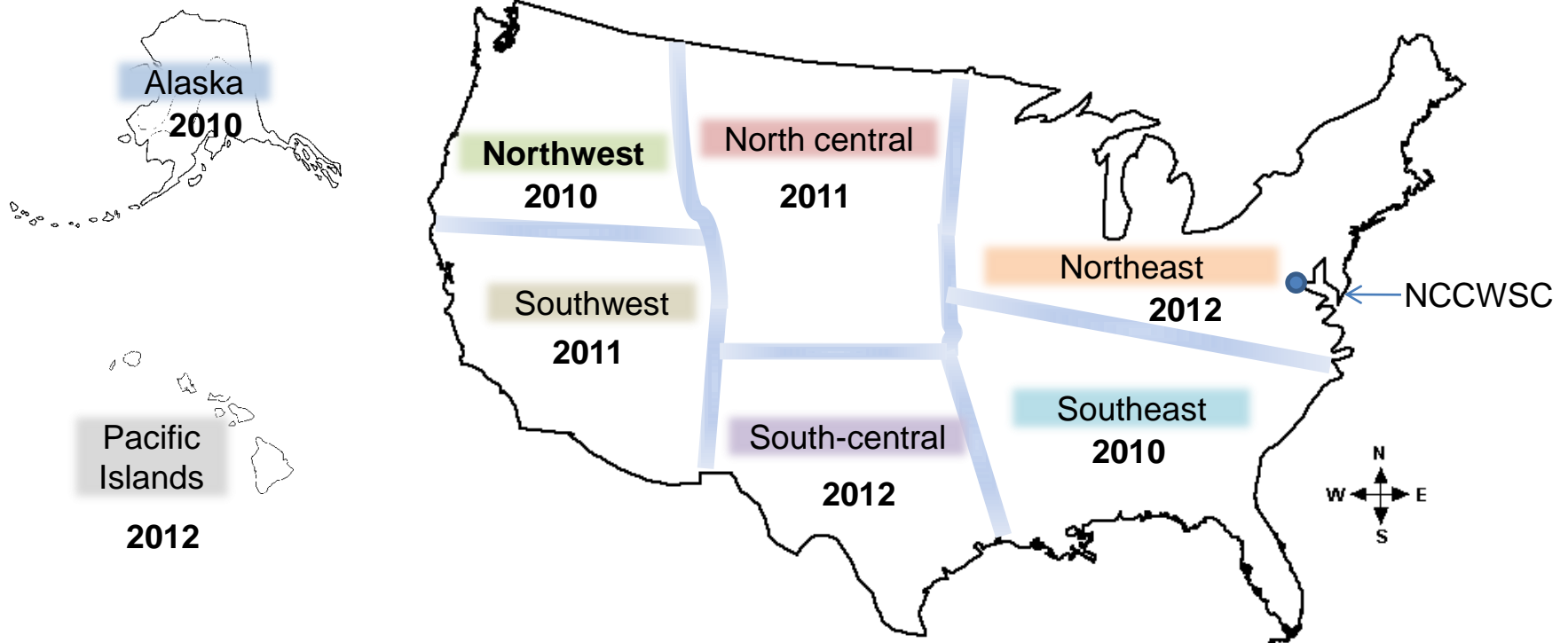


Climate Adaptation Structures



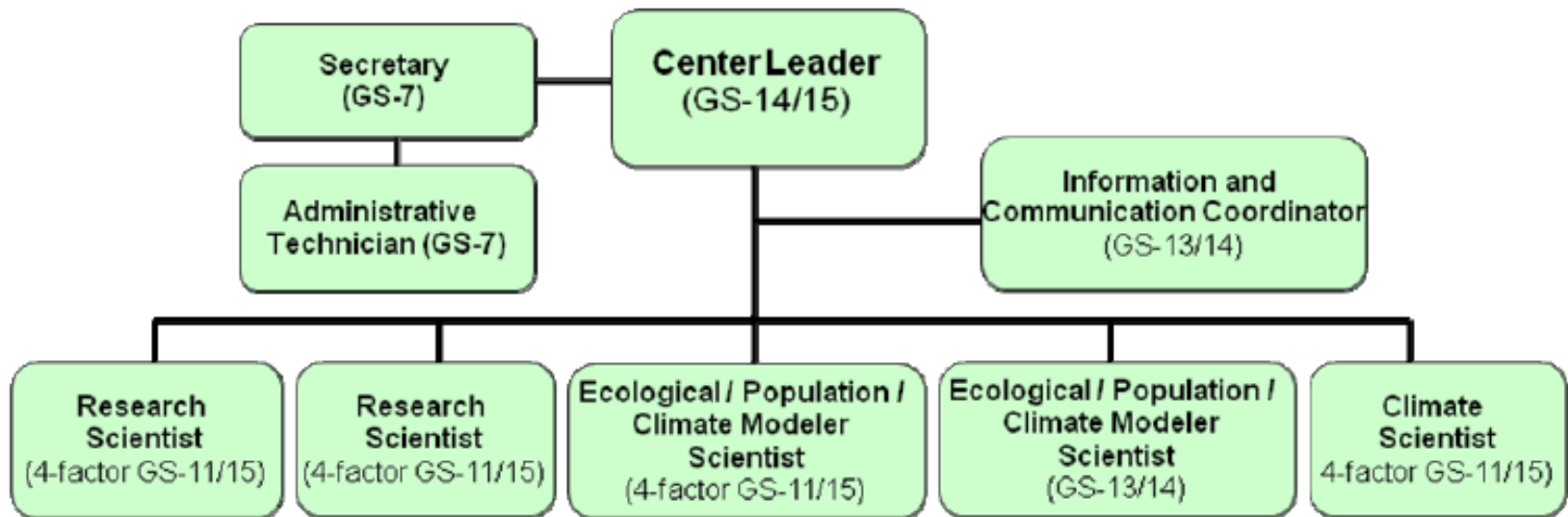


NCCWSC National & DOI Regional CSC's



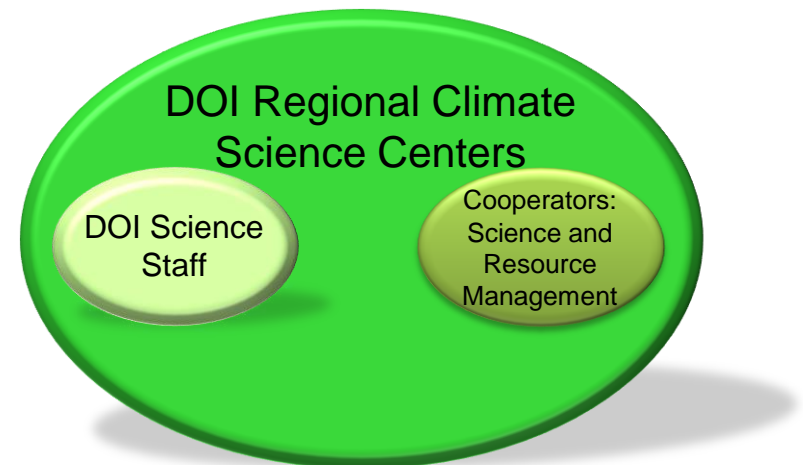
“Fuzzy Boundaries”

Potential Staffing of Regional DOI – CSC, USGS component



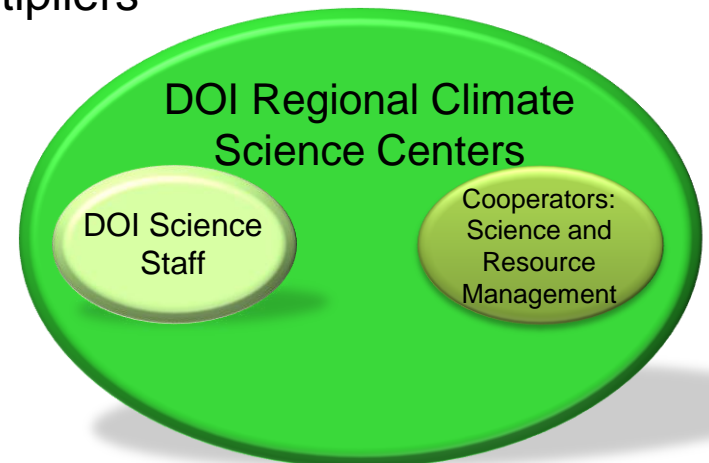
DOI Regional CSCs -- DRAFT Selection Criteria

1. Current climate change program
2. Existing Linkages with Department of the Interior (DOI) bureaus
3. Existing linkages with potential Center partners
4. Organization capabilities and contributions
5. Regional climate change science needs and adaptation partner availability



USGS NCCWSC Component of DOI Regional CSCs

- Initial / Core Staffing (USGS NCCWSC) – Director/Coordinator, Ecologists, Modelers, Climate Scientists, Population Biologists, etc.
- Annual Projected DOI/USGS funding ~\$4 million
 - ~\$1.5 M = DOI staff and operations (space/facilities, etc.)
 - Remainder = science funding through university, USGS, other partners
 - Partnerships – in-kind and monetary multipliers



Feb 28	Publication date – Grants.gov
Mar 18	Webinars
May 6	Proposal due date
June 15	TRP meeting
6/16-6/30	Site visits
July 11	TRP final conference call
7/11 – 8/31	Negotiations completed
September	Internal briefing—up to Council, Decision and Announcement

DOI Climate Science Centers

- CSCs will deliver basic climate change impact science.
- CSCs will prioritize fundamental science, data and decision-support activities.
- CSCs will partner with and help facilitate the coordination of fundamental climate science capabilities across their regions of responsibility.
- CSCs will synthesize, integrate, and communicate existing climate change impact data.
- CSCs will partner with resource managers at pertinent LCCs to assist development of science-based adaptation strategies.

DOI Climate Science Centers

A New Paradigm

- Linking Physical, Biological, and Social Science
- Scenario/Forecasts of Future Possibilities
- Link Research, Modeling, Synthesis, and Monitoring in a Landscape/System Perspective
- Science Collaboration/Resource Management Collaboration
- Stakeholders set priorities/Provide Review & Feedback
- Share Data and Information