

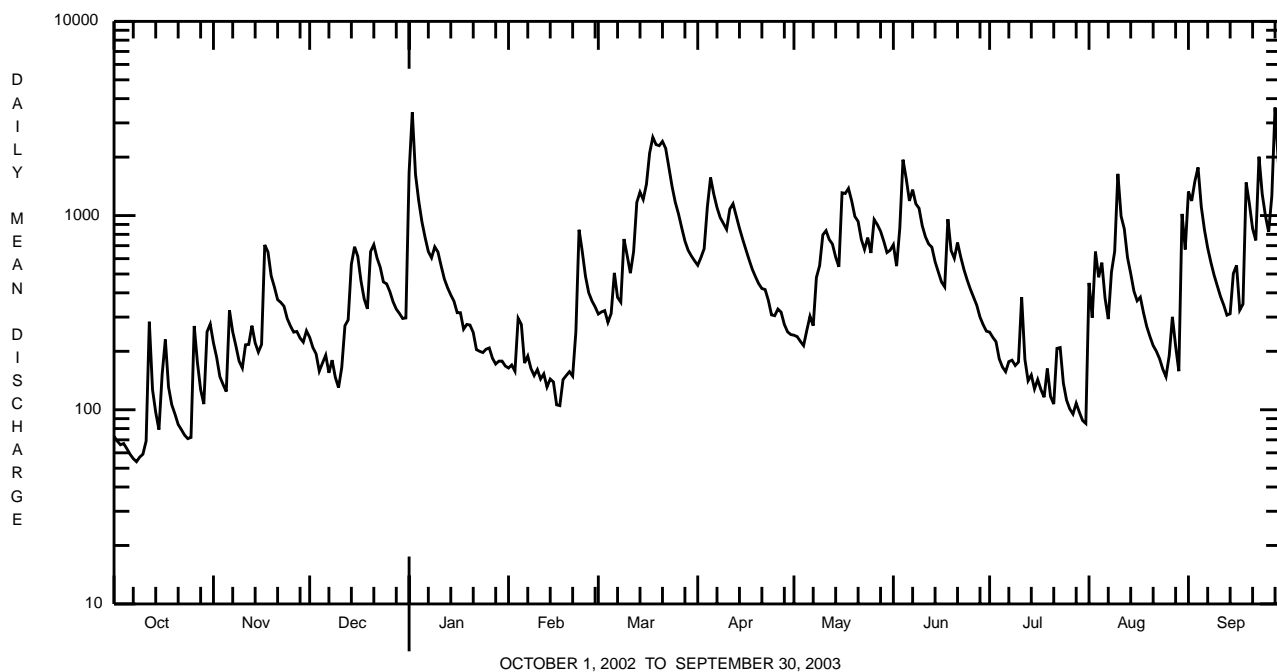
JUNIATA RIVER BASIN

01558000 LITTLE JUNIATA RIVER AT SPRUCE CREEK, PA--Continued

SUMMARY STATISTICS	FOR 2002 CALENDAR YEAR		FOR 2003 WATER YEAR		WATER YEARS 1939 - 2003	
ANNUAL TOTAL	117742		194645			
ANNUAL MEAN	323		533		376	
HIGHEST ANNUAL MEAN					630	1972
LOWEST ANNUAL MEAN					248	1966
HIGHEST DAILY MEAN	2740	Mar 27	3600	Sep 28	21100	Jun 23 1972
LOWEST DAILY MEAN	51	Sep 12-14	54	Oct 8	31	Sep 12 1995
ANNUAL SEVEN-DAY MINIMUM	54	Sep 9	59	Oct 4	34	Sep 7 1995
MAXIMUM PEAK FLOW			a5660	Jan 2	a28600	Jun 23 1972
MAXIMUM PEAK STAGE			7.72	Jan 2	16.98	Jun 23 1972
INSTANTANEOUS LOW FLOW			53	Oct 8	45	Sep 26 1943 ^b
ANNUAL RUNOFF (CFSM)	1.47		2.42		1.71	
ANNUAL RUNOFF (INCHES)	19.91		32.91		23.20	
10 PERCENT EXCEEDS	688		1190		814	
50 PERCENT EXCEEDS	221		346		220	
90 PERCENT EXCEEDS	65		127		83	

^a From rating curve, then in use, extended above 3,600 ft³/s on basis of slope-area measurement at gage height 15.77 ft.

^b Also Oct. 4, 1949.



JUNIATA RIVER BASIN

01558000 LITTLE JUNIATA RIVER AT SPRUCE CREEK, PA--Continued

BIOLOGICAL DATA
BENTHIC MACROINVERTEBRATES

REMARKS.--Samples were collected using rapid bioassessment protocols for benthic macroinvertebrates using a D-Frame net with a mesh size of 500 µm. Samples represent counts per 100 (approximate) subsamples.

Date	8/13/02
Benthic Macroinvertebrate	Count
Platyhelminthes	
Turbellaria (FLATWORMS)	
Tricladida	
Planariidae	1
Annelida	
Oligochaeta (AQUATIC EARTHWORMS)	
Lumbriculida	
Lumbriculidae	3
Arthropoda	
Acariformes	
Hydrachnidia (WATER MITES)	1
Crustacea	
Amphipoda (SCUDS)	
Crangonyctidae	
Crangonyx sp	1
Isopoda (AQUATIC SOWBUGS)	
Asellidae	
Caecidotea sp	1
Insecta	
Ephemeroptera (MAYFLIES)	
Baetidae	
Acentrella sp	2
Baetis sp	17
Ephemerellidae	2
Serratella sp	1
Heptageniidae	
Stenonema sp	7
Isonychiidae	
Isonychia sp	1
Leptophlebiidae	1
Trichoptera (CADDISFLIES)	
Brachycentridae	
Brachycentrus sp	4
Hydropsychidae	
Cheumatopsyche sp	6
Hydropsyche sp	12
Hydroptilidae	
Hydroptila sp	3
Coleoptera (BEETLES)	
Elmidae (RIFFLE BEETLES)	
Stenelmis sp	4
Diptera (TRUE FLIES)	
Chironomidae (MIDGES)	40
Tipulidae (CRANE FLIES)	
Antocha sp	8
Total Organisms	115