



# Barrier Berm Project – Daily Report

## Day 65

---

**Document:** 139551-PMD-065-S

**Date Prepared:** August 5, 2010

**Prepared by:**

Shaw Environmental & Infrastructure Group

---



*W9 Berm – August 1, 2010*

# Barrier Berm Project 139551 – Daily Information

## Yesterday – 4 August

Vessel	Cubic Yards (CY) Handled	Hopper Loads
<b>East</b>		
Cutter Alaska	41,139	
Cutter Texas	12,000	
<b>Subtotal East</b>	<b>53,139</b>	
<b>West</b>		
Cutter California	31,325	
Cutter EW Ellefsen	15,556	
Cutter RS Weeks	0	
Hopper Stuyvesant	14,898	2
Hopper Liberty Island	10,170	2
Hopper Terrapin Island	7,417	2
Hopper Padre Island	5,517	2
Hopper BE Lindholm	5,855	2
Hopper Bayport	7,693	2
Hopper Glen Edwards	19,610	2
<b>Subtotal West</b>	<b>118,041</b>	<b>14</b>
<b>Total</b>	<b>171,180</b>	<b>14</b>

- RS Weeks released from the project, EW Ellefsen continued berm placement operations at W9.

## Today – 5 August

- Borrow operations to continue at Pass a Loutre and West, placement operations to continue at E4 North and W9.

## Tomorrow – 6 August

- Today's operational activities expected to continue through tomorrow.

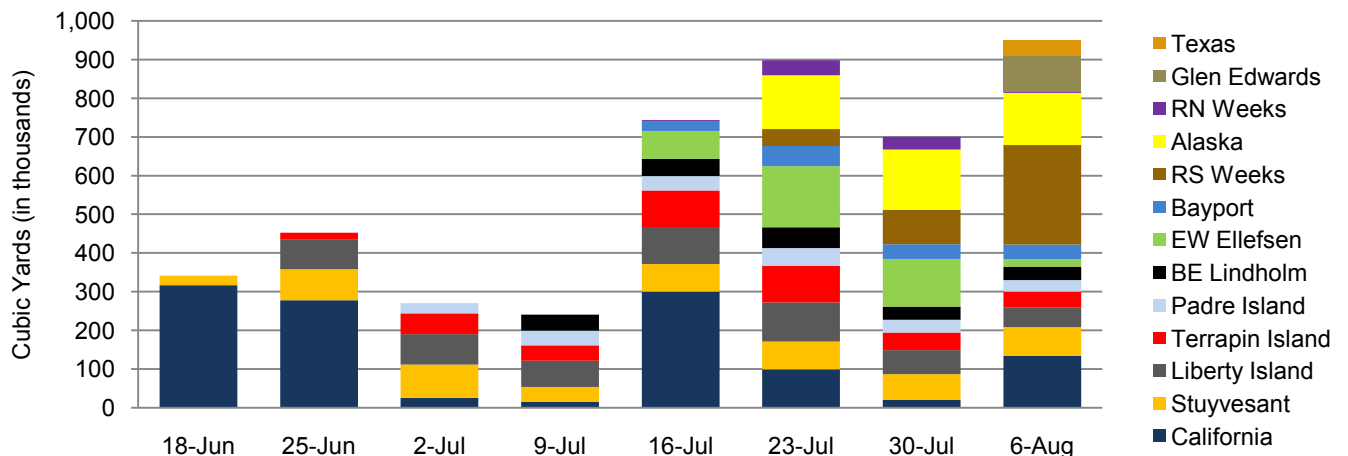
## Near-Term Milestones

- Start of W10 berm construction forecast to begin 24 August.

## Potential Schedule Variability Items

- Final permit requirements, third party agency requirements.
- Equipment rotation, uptime maximization and timely remaining operations.
- Additional permit conditions to refill borrow area 6A by early August.

**All Dredges Weekly Volume**



## Barrier Berm Project 139551 – Cumulative Information

### Inception to Date (ITD) Volume

Vessel	Handled - ITD (cy)	Hopper Loads - ITD
Cutter California	1,188,982	
Cutter EW Ellefsen	372,562	
Cutter RS Weeks	391,350	
Cutter Alaska	428,706	
Cutter Texas	38,158	
Hopper Stuyvesant	513,432	78
Hopper Liberty Island	530,282	121
Hopper Terrapin Island	389,553	115
Hopper Padre Island	210,767	80
Hopper BE Lindholm	207,754	71
Hopper Bayport	153,241	42
Hopper RN Weeks	77,010	28
Hopper Glen Edwards	94,878	10
<b>Total</b>	<b>4,596,675</b>	<b>545</b>

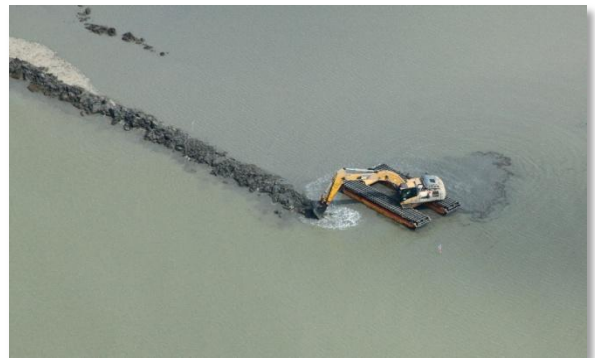
### Progress by Berm and Borrow Operations

Location	Start	End	Forecast (cy)	Actual (cy)	To Go (cy)	Complete
E3	11-Aug-10	21-Oct-10	3,304,107	0	3,304,107	0.00%
E4	14-Jun-10 A	1-Nov-10	8,345,969	1,501,140	6,844,829	17.99%
W8	6-Sep-10	28-Nov-10	2,802,588	0	2,802,588	0.00%
W9	18-Jul-10 A	27-Aug-10	1,130,870	406,906	723,964	35.98%
W10	24-Aug-10	21-Sep-10	1,327,543	0	1,327,543	0.00%
W11	13-Oct-10	1-Nov-10	1,081,702	0	1,081,702	0.00%
Borrow Operations	16-Jun-10 A	18-Oct-10	13,088,593	2,688,629	10,399,964	20.54%
<b>Totals</b>			<b>31,081,372</b>	<b>4,596,675</b>	<b>26,484,697</b>	<b>14.79%</b>

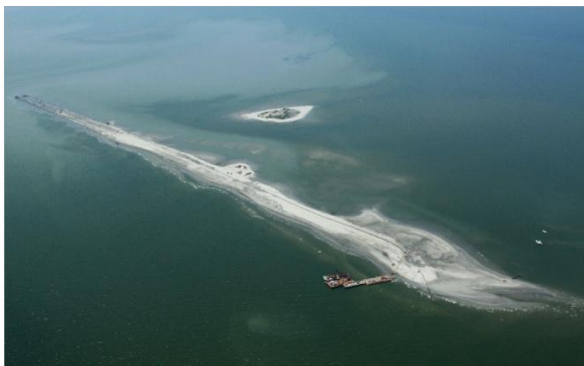
Note: Percent complete of material handled represents only 1 of 3 elements of percent complete for the overall project.



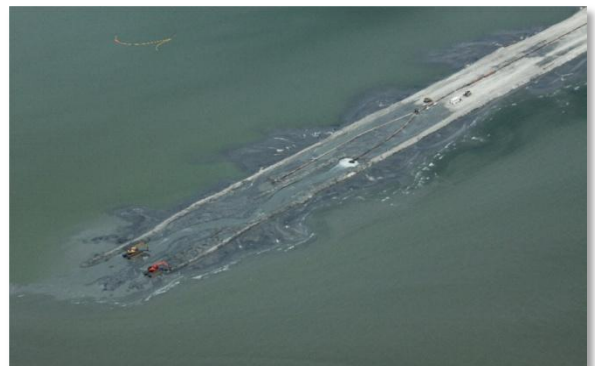
W9 Berm – August 1, 2010



W9 Berm Construction – August 1, 2010



E4 Berm – August 1, 2010



E4 Berm Construction – August 1, 2010