



Barrier Berm Project – Daily Report

Day 63

Document: 139551-PMD-063-S

Date Prepared: August 3, 2010

Prepared by:

Shaw Environmental & Infrastructure Group



E4 Berm – August 1, 2010

Barrier Berm Project 139551 – Daily Information

Yesterday – 2 August

Vessel	Cubic Yards (CY) Handled	Hopper Loads
East		
Cutter Alaska	13,215	
Cutter Texas	12,000	
Subtotal East	25,215	
West		
Cutter California	34,312	
Cutter EW Ellefsen	0	
Cutter RS Weeks	62,237	
Hopper Stuyvesant	15,078	2
Hopper Liberty Island	9,698	2
Hopper Terrapin Island	7,261	2
Hopper Padre Island	5,401	2
Hopper BE Lindholm	8,599	3
Hopper Bayport	7,559	2
Hopper RN Weeks	0	0
Hopper Glen Edwards	28,529	3
Subtotal West	178,674	16
Total	203,889	16

- Highest one-day production volume on record.
- 100% of fleet mobilized (pie chart removed from bottom of the page).

Today – 3 August

- Borrow operations to continue at Pass a Loutre and West, placement operations to continue at E4 North and W9.
- First mile of berm expected to be complete.

Tomorrow – 4 August

- Today's operational activities expected to continue through tomorrow.

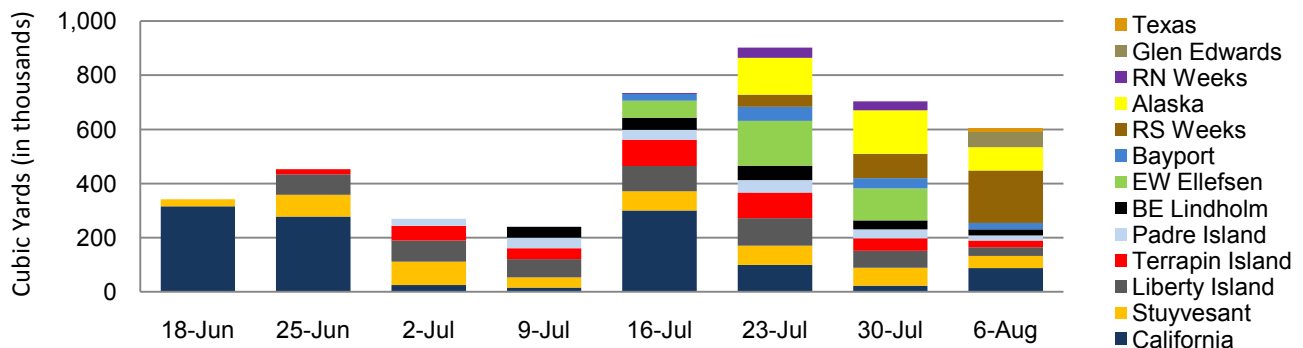
Near-Term Milestones

- Start of W10 berm construction forecast to begin 24 August.

Potential Schedule Variability Items

- Final permit requirements, third party agency requirements.
- Equipment rotation, uptime maximization and timely remaining operations.
- Additional permit conditions to refill borrow area 6A by early August.

All Dredges Weekly Volume



Barrier Berm Project 139551 – Cumulative Information

Inception to Date (ITD) Volume

Vessel	Handled - ITD (cy)	Hopper Loads - ITD
Cutter California	1,145,154	
Cutter EW Ellefsen	345,685	
Cutter RS Weeks	328,861	
Cutter Alaska	381,290	
Cutter Texas	12,000	
Hopper Stuyvesant	483,869	74
Hopper Liberty Island	510,539	117
Hopper Terrapin Island	374,835	111
Hopper Padre Island	199,684	76
Hopper BE Lindholm	196,068	67
Hopper Bayport	138,103	38
Hopper RN Weeks	77,010	28
Hopper Glen Edwards	55,834	6
Total	4,248,932	517

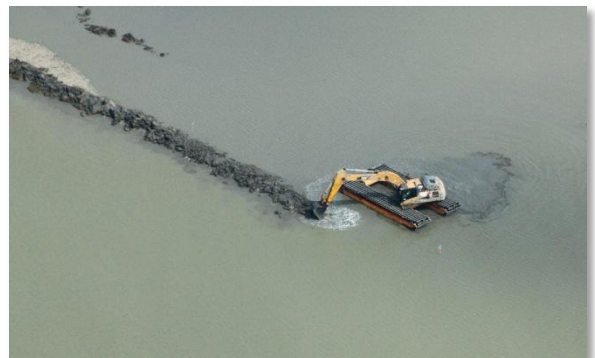
Progress by Berm and Borrow Operations

Location	Start	End	Forecast (cy)	Actual (cy)	To Go (cy)	Complete
E3	11-Aug-10	21-Oct-10	3,304,107	0	3,304,107	0.00%
E4	14-Jun-10 A	1-Nov-10	8,345,969	1,427,566	6,918,403	17.10%
W8	6-Sep-10	28-Nov-10	2,802,588	0	2,802,588	0.00%
W9	18-Jul-10 A	27-Aug-10	1,130,870	328,861	802,009	29.08%
W10	24-Aug-10	21-Sep-10	1,327,543	0	1,327,543	0.00%
W11	13-Oct-10	1-Nov-10	1,081,702	0	1,081,702	0.00%
Borrow Operations	16-Jun-10 A	18-Oct-10	13,088,593	2,492,505	10,596,088	19.04%
Totals			31,081,372	4,248,932	26,832,440	13.67%

Note: Percent complete of material handled represents only 1 of 3 elements of percent complete for the overall project.



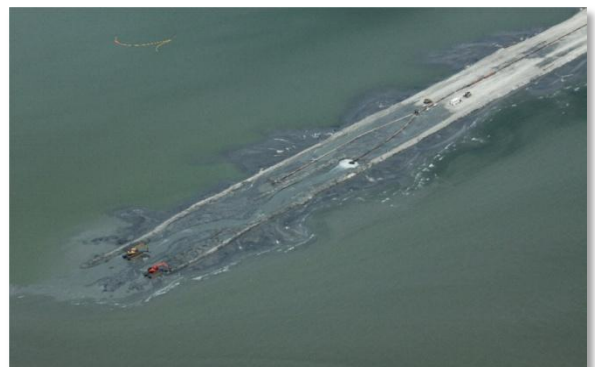
W9 Berm – August 1, 2010



W9 Berm Construction – August 1, 2010



E4 Berm – August 1, 2010



E4 Berm Construction – August 1, 2010