



Barrier Berm Project – Daily Report

Day 112

Document: 139551-PMD-112-S

Date Prepared: September 21, 2010

Prepared by:

Shaw Environmental & Infrastructure Group



W9 Berm – September 19, 2010

Barrier Berm Project 139551 – Daily Information

Yesterday – 20 September

Vessel	Cubic Yards (CY) Handled	Hopper Loads
East		
Cutter Alaska	0	
Subtotal East	0	
West		
Cutter California	33,373	10 Scows
Cutter EW Ellefsen	22,337	
Cutter Texas	35,000	
Hopper Stuyvesant	15,385	2
Hopper Glenn Edwards	19,344	2
Subtotal West	125,439	4
Total	125,439	4

- Alaska down for repairs on the cutter; expected to return to production on 23 September.

Today – 21 September

- Borrow operations at Pass a Loutre and West to continue.
- Berm placement operations to continue on W9 and W10.

Tomorrow – 22 September

- Today's operational activities to continue through tomorrow.

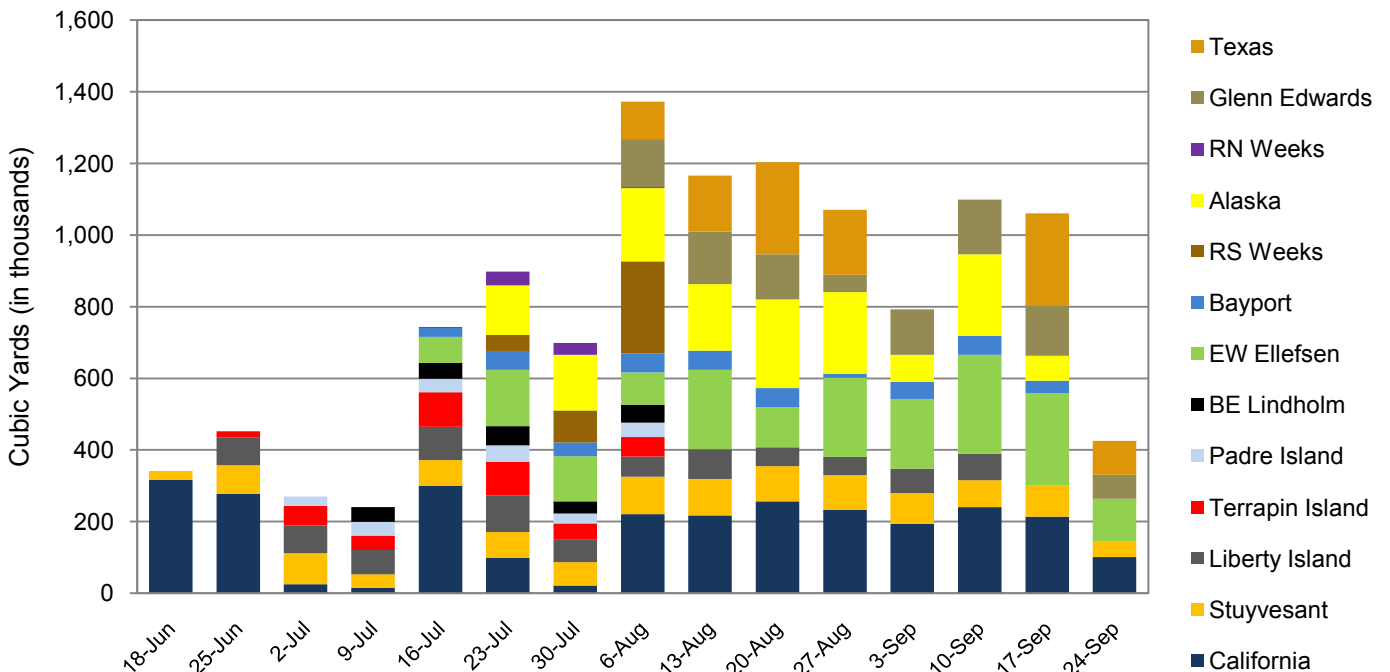
Near-Term Milestones

- Completion of W9 berm construction forecast for 26 September.

Potential Schedule Variability Items

- Final permit requirements, third party agency requirements.
- New potential storm developing in the Atlantic Ocean.

All Dredges Weekly Volume



Barrier Berm Project 139551 – Cumulative Information

Inception to Date (ITD) Volume

Vessel	Handled - ITD (cy)	Hopper Loads - ITD
Cutter California	2,731,831	
Cutter EW Ellefsen	1,847,312	
Cutter RS Weeks *	391,350	
Cutter Alaska	1,533,045	
Cutter Texas	1,050,042	
Hopper Stuyvesant	1,132,902	166
Hopper Liberty Island *	864,508	192
Hopper Bayport *	421,280	114
Hopper Glenn Edwards	943,309	96
Hopper Terrapin Island *	403,823	119
Hopper Padre Island *	216,133	84
Hopper BE Lindholm *	222,527	76
Hopper RN Weeks *	77,010	29
Total	11,835,072	876

* Demobilized from Project.

Progress by Berm and Borrow Operations (cubic yards)

Location	Start	End	Forecast (cy)	Actual (cy)	To Go (cy)	Complete
E3	30-Dec-10	3-Apr-11	3,304,107	0	3,304,107	0.00%
E4	14-Jun-10 A	8-Feb-11	8,345,969	3,266,832	5,079,137	39.14%
W8	4-Oct-10	1-Jan-11	1,243,548**	0	1,243,548	0.00%
W9	18-Jul-10 A	26-Sep-10	1,929,494**	1,880,667	48,827	97.47%
W10	13-Sep-10 A	3-Nov-10	1,588,710**	350,531	1,238,179	22.06%
W11	10-Nov-10	14-Dec-10	2,729,032**	0	2,729,032	0.00%
Borrow Operations	16-Jun-10 A	7-Dec-10	11,266,525**	6,337,042	4,929,483	56.25%
Totals			30,407,385	11,835,072	18,572,313	38.92%

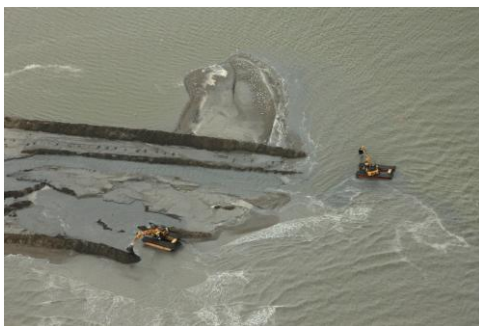
Note: Percent complete of material handled represents only 1 of 3 elements of percent complete for the overall project.

Progress by Berm (linear feet)

Location	Forecast (LF)	Under Construction (LF)	To Go (LF)	Complete
E3	35,482	0	35,482	0.00%
E4	80,520	16,395	64,125	20.36%
W8	9,480 **	0	9,480	0.00%
W9	13,030**	10,704	2,326	82.15%
W10	15,700**	0	15,700	0.00%
W11	23,000**	0	23,000	0.00%
Totals	177,212	27,099	150,113	15.29%

Note: Under Construction represents linear footage of berm placed; all material may not yet conform to elevation +6.

** Trended project completion quantities.



W9 Berm Operations – September 19, 2010



W10 Berm Initial Pad– September 19, 2010