



Barrier Berm Project – Daily Report

Day 62

Document: 139551-PMD-062-S

Date Prepared: August 2, 2010

Prepared by:

Shaw Environmental & Infrastructure Group



West Reach– August 1, 2010

Barrier Berm Project 139551 – Daily Information

Yesterday – 01 August

Vessel	Cubic Yards (CY) Handled	Hopper Loads
East		
Cutter Alaska	35,584	
Cutter Texas	0	
Subtotal East	35,584	
West		
Cutter California	27,197	
Cutter EW Ellefsen	0	
Cutter RS Weeks	60,332	
Hopper Stuyvesant	14,800	2
Hopper Liberty Island	13,630	3
Hopper Terrapin Island	7,359	2
Hopper Padre Island	7,854	3
Hopper BE Lindholm	5,819	2
Hopper Bayport	7,612	2
Hopper RN Weeks	0	0
Hopper Glen Edwards	18,825	2
Subtotal West	163,428	16
Total	199,012	16

Today – 2 August

- Borrow operations to continue at Pass a Loutre and West.
- Placement operations to continue at E4 North and W9.

Tomorrow – 3 August

- Today's operational activities to continue through tomorrow.
- Second dredge to refill 6A to begin at Hewes Point.

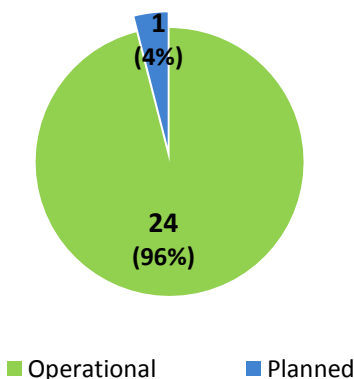
Near-Term Milestones

- Forecast completion of first mile of berm approximately 4 August.
- Start of W10 berm construction forecast to begin 24 August.

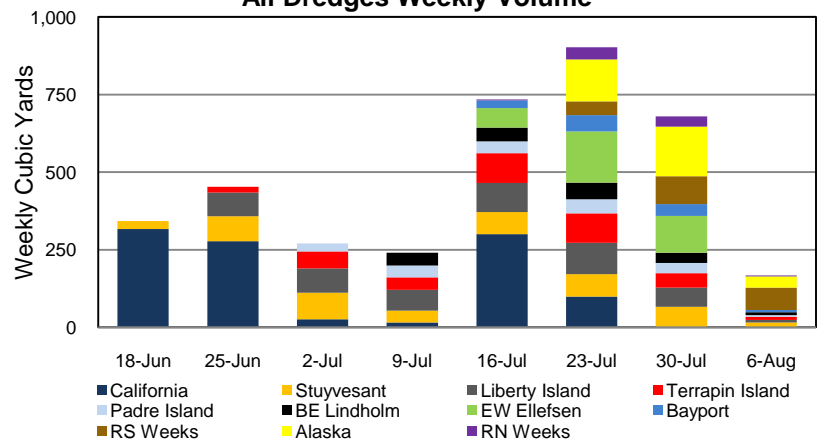
Potential Schedule Variability Items

- Final permit requirements, third party agency requirements.
- Equipment rotation, uptime maximization and timely remaining operations.
- Additional permit conditions to refill borrow area 6A by early August.

Fleet Mix
(total vessel count)



All Dredges Weekly Volume



Barrier Berm Project 139551 – Cumulative Information

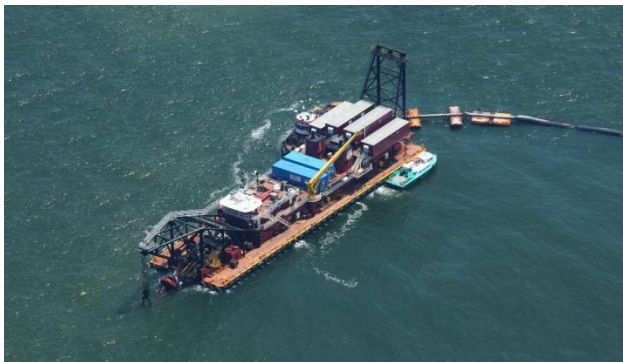
Inception to Date (ITD) Volume

Vessel	Handled - ITD (cy)	Hopper Loads - ITD
Cutter California	1,110,842	
Cutter EW Ellefsen	345,685	
Cutter RS Weeks	266,624	
Cutter Alaska	368,075	
Hopper Stuyvesant	468,791	72
Hopper Liberty Island	500,841	115
Hopper Terrapin Island	367,574	109
Hopper Padre Island	194,283	74
Hopper BE Lindholm	187,469	64
Hopper Bayport	130,544	36
Hopper RN Weeks	77,010	28
Hopper Glen Edwards	27,305	3
Total	4,045,043	501

Progress by Berm and Borrow Operations

Location	Start	End	Forecast (cy)	Actual (cy)	To Go (cy)	Complete
E3	11-Aug-10	21-Oct-10	3,304,107	0	3,304,107	0.00%
E4	14-Jun-10 A	1-Nov-10	8,345,969	1,402,351	6,943,618	16.80%
W8	6-Sep-10	28-Nov-10	2,802,588	0	2,802,588	0.00%
W9	18-Jul-10 A	27-Aug-10	1,130,870	266,624	864,246	23.58%
W10	24-Aug-10	21-Sep-10	1,327,543	0	1,327,543	0.00%
W11	13-Oct-10	1-Nov-10	1,081,702	0	1,081,702	0.00%
Borrow Operations	16-Jun-10 A	18-Oct-10	13,088,593	2,376,068	10,712,525	18.15%
Totals			31,081,372	4,045,043	27,235,341	13.01%

Note: Percent complete of material handled represents only 1 of 3 elements of percent complete for the overall project.



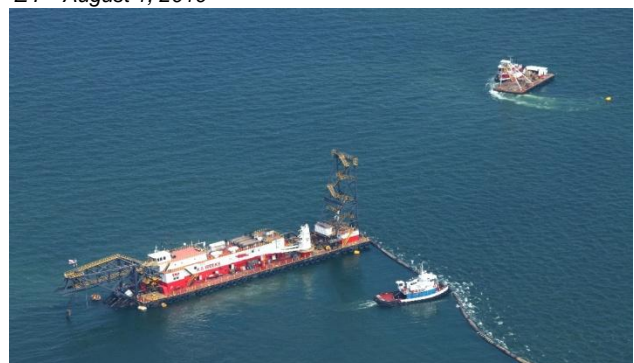
Alaska – August 1, 2010



E4 – August 1, 2010



W9 – August 1, 2010



R.S. Weeks – August 1, 2010