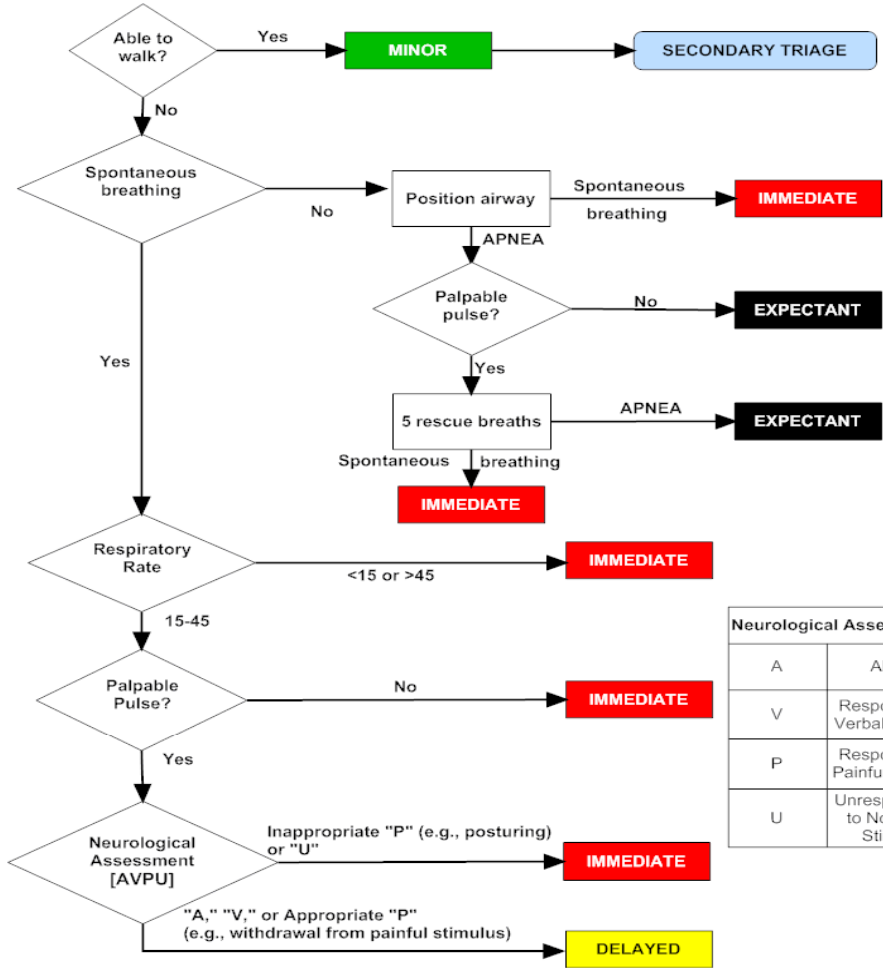


JumpSTART Pediatric Multiple Casualty Incident Triage



| Neurological Assessment | |
|-------------------------|---------------------------------|
| A | Alert |
| V | Responds to Verbal Stimuli |
| P | Responds to Painful Stimuli |
| U | Unresponsive to Noxious Stimuli |

Use JumpSTART if the Patient appears to be a child.
 Use an adult system, such as START, if the patient appears to be a young adult.

Triage Categories

| | |
|--|--|
| <p>EXPECTANT Black Triage Tag Color</p> <ul style="list-style-type: none"> Victim unlikely to survive given severity of injuries, level of available care, or both Palliative care and pain relief should be provided | <p>DELAYED Yellow Triage Tag Color</p> <ul style="list-style-type: none"> Victim's transport can be delayed Includes serious and potentially life-threatening injuries, but status not expected to deteriorate significantly over several hours |
| <p>IMMEDIATE Red Triage Tag Color</p> <ul style="list-style-type: none"> Victim can be helped by immediate intervention and transport Requires medical attention within minutes for survival (up to 60) Includes compromises to patient's Airway, Breathing, Circulation | <p>MINOR Green Triage Tag Color</p> <ul style="list-style-type: none"> Victim with relatively minor injuries Status unlikely to deteriorate over days May be able to assist in own care: "Walking Wounded" |

Adopted from <http://www.jumpstarttriage.com/>