



Felsenthal and Overflow National Wildlife Refuges

April 2012

Introduction

The US Department of Transportation, Federal Highway Administration, Eastern Federal Lands Highway Division, in cooperation with the US Fish & Wildlife Service, is performing a transportation study at the Felsenthal and Overflow National Wildlife Refuges located in Ashley, Bradley, and Union Counties, AR.

Project Information

The Transportation Study will document the existing transportation infrastructure and mobility patterns in and around the Felsenthal and Overflow National Wildlife Refuges including roadways that provide access to Refuge facilities. Proposed short-, medium-, and long-range transportation solutions have been developed to help improve mobility for visitors and staff in and around the Refuges.

The Transportation Study is expected to be completed in June 2012. As part of the study, two public meetings were planned, one in February 2012 and the other in May 2012. The purpose of the second meeting is to review details and conceptual drawings of the alternatives and provide comments.

The stakeholder group for this study includes state and municipal agencies, as well as, organizations with interest in the Refuges or in roadways accessing the Refuges. This group has met periodically

throughout the project to provide input to the project team.

The Transportation Study began with a review of the existing conditions and discussions with stakeholders and the public. From this information, preliminary alternatives were conceptualized, screened, and potential partners alternatives were identified. As the concepts were further developed, they were classified as potential short-, medium-, and long-range improvements. Alternatives were refined using input from the stakeholder and public meetings, as well as, reviews of environmental and cultural impacts, constructability, transportation benefit, and estimated cost.

Potential short-, medium-, and long-range improvements include corridor improvements, as well as, other actions not involving roadway construction. A matrix and figures summarizing these improvements are attached to this newsletter.

Public Information Meeting

May 3, 2012 — 5:00 PM - 6:30 PM

Crossett Economic Development Foundation

“Old Library Building”

125 Main Street

Crossett, Arkansas 71365

More information can be found at:

<http://www.efl.fhwa.dot.gov/projects-public-notices.aspx>

Contact Information

Bernie Petersen

Project Leader — South Arkansas Refuge Complex
Bernie_Petersen@fws.gov (870) 364-1174

Christoph Jaeschke

EFLHD Project Manager Federal Highway Administration
Christoph.Jaeschke@dot.gov (703) 404-6306

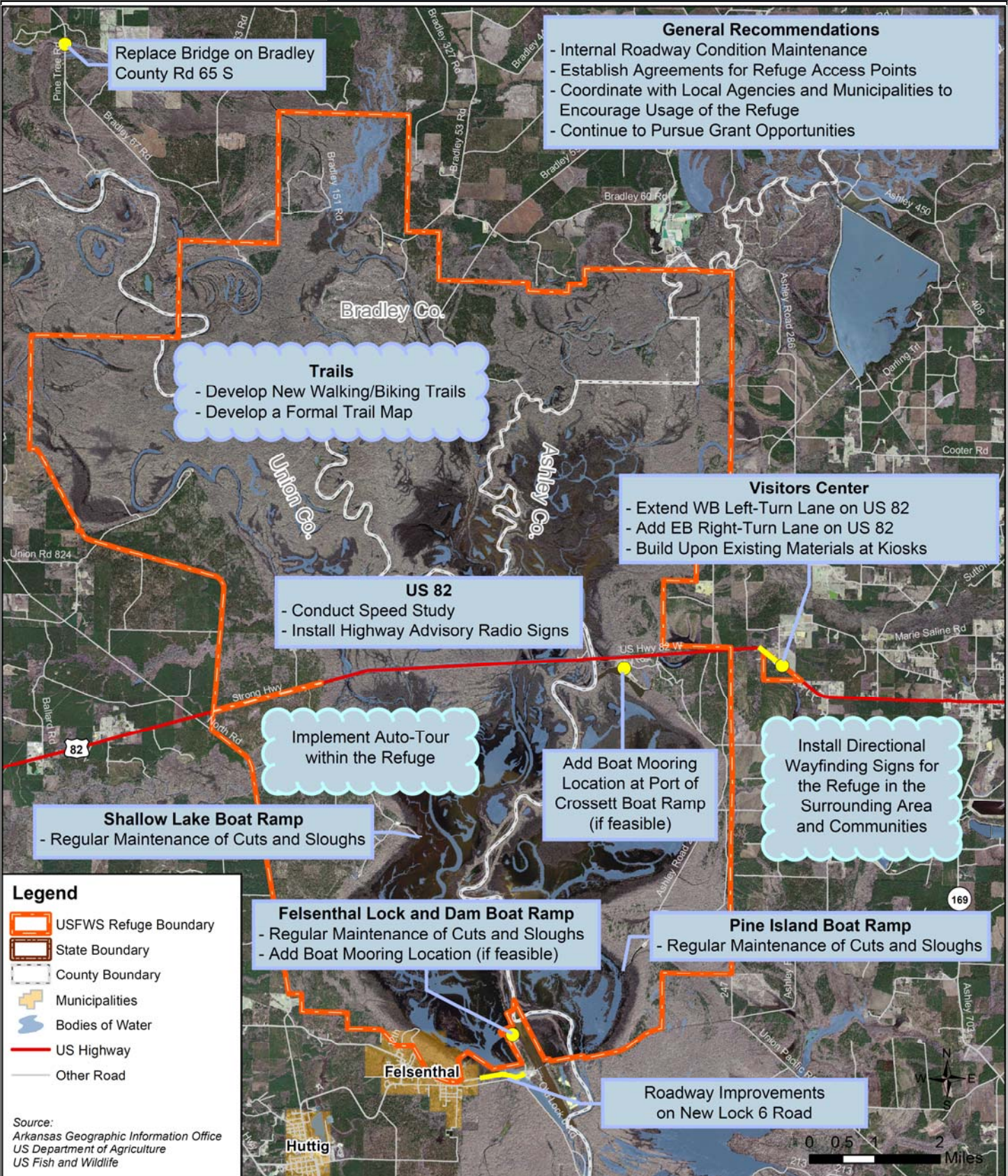
Jennifer Bihl

Project Manager — Kimley-Horn and Associates, Inc.
Jennifer.Bihl@kimley-horn.com (843) 379-1580

Also, please visit our website at:

www.fws.gov/felsenthal





General Recommendations

- Internal Roadway Condition Maintenance
- Establish Agreements for Refuge Access Points
- Coordinate with Local Agencies and Municipalities to Encourage Usage of the Refuge
- Build Upon Existing Materials in Kiosks
- Continue to Pursue Grant Opportunities

Implement Auto-Tour within the Refuge

Install Directional Wayfinding Signs for the Refuge in the Surrounding Area and Communities

Trails

- Develop New Walking/Biking Trails
- Develop a Formal Trail Map

Legend

- Study Area Refuge
- State Boundary
- County Boundary
- Municipalities
- Bodies of Water
- US Highway
- State Highway
- Other Road
- Railroad

Source:
 Arkansas Geographic Information Office
 US Department of Agriculture
 US Fish and Wildlife



0 0.5 1 2 Miles

Arkansas

Ashley Co.

Louisiana

Morehouse Parish

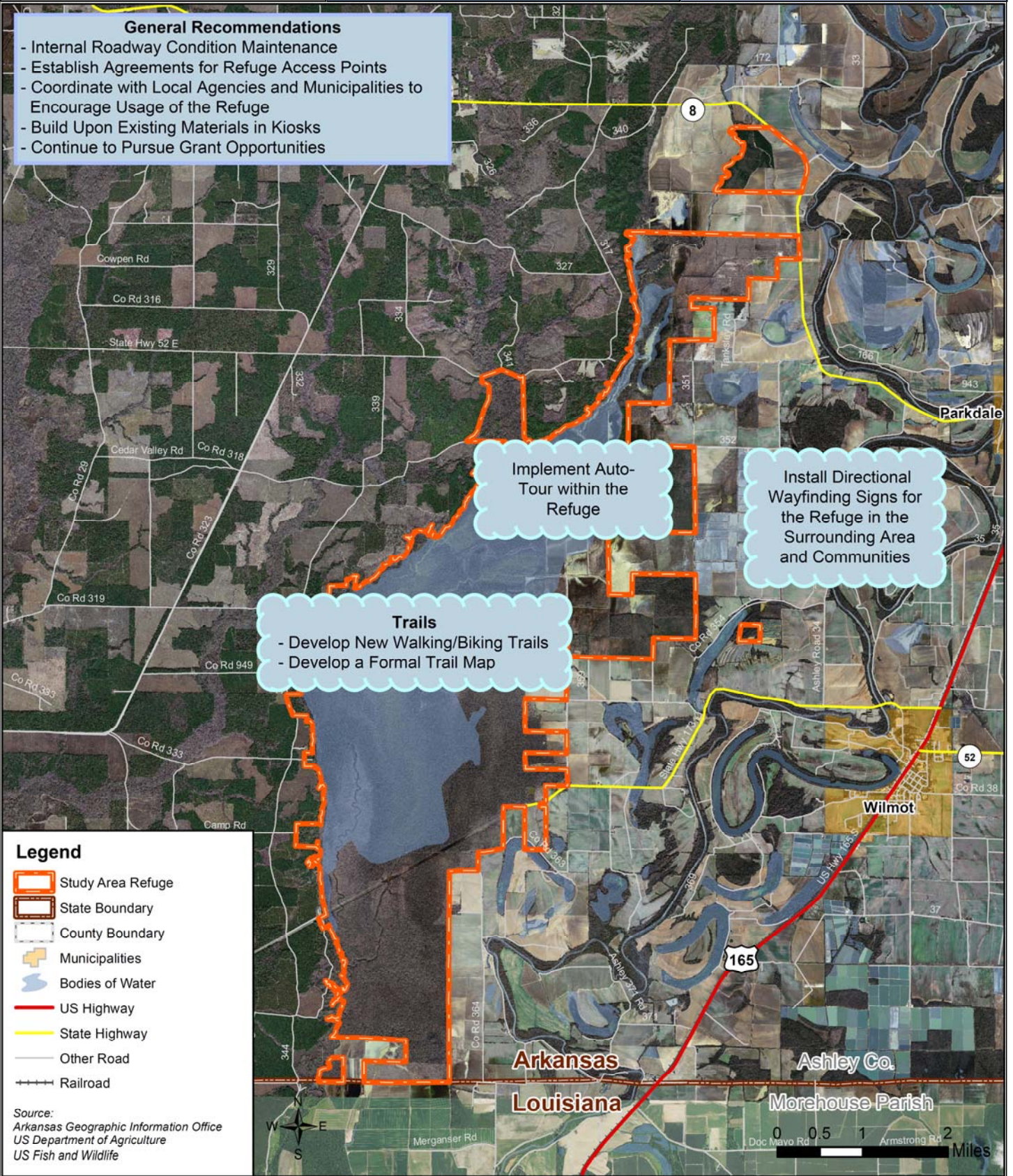
Wilmot

Parkdale

165

52

8





Short-Range Alternatives
Medium-Range Alternatives
Long-Range Alternatives

Alternatives		Stakeholders														
		USFWS	AHTD	Bradley County	Ashley County	Union County	City of Hamburg	City of Crossett	City of Parkdale	City of Wilmot	Crossett Chamber of Commerce	Army Corps of Commerce	Friends of Felsenthal	Private Land Owners		
Felsenthal National Wildlife Refuge	F1 Internal Roadway Condition Improvement	x														
	F2 Westbound Left-Turn Lane at Visitors Center Driveway (US 82)	x	x													
	F3 Eastbound Right-Turn Lane at Visitors Center Driveway (US 82)	x	x													
	F4 Channel Maintenance at Boat Ramps	x										x				
	F5 Establish Agreements for Refuge Access Points	x													x	
	F6 Boat Mooring Locations Feasibility	x					x					x	x			
	F7 Auto-Tour Route	x														
	F8 Bridge Replacement on Bradley County Road 65 S	x		x												
	F9 Roadway Improvements on New Lock 6 Road	x											x			
	F10 Installation of Boat Mooring Locations	x					x					x	x			
Additional Recommendations																
	Conduct Speed Study on US 82 in the vicinity of Refuge		x													
	Install Wayfinding Signs for the Refuge in the Surrounding Area	x	x	x	x	x		x			x					
	Coordinate with AHTD for Installation of Highway Advisory Radio Signs along US 82	x	x													
	Develop Walking/Biking Trails	x													x	
	Develop a Formal Trail Map for the Refuge	x													x	
	Build upon Existing Kiosk Materials	x													x	
	Continue to Pursue Grant Opportunities for Additional Funding Sources	x	x										x			
	Coordinate with Local Agencies and Municipalities to Encourage Usage of the Refuge	x		x	x	x		x			x			x		
Overflow National Wildlife Refuge	O1 Internal Roadway Condition Improvement	x														
	O2 Establish Agreements for Refuge Access Points	x													x	
	O3 Auto-Tour Route	x														
	Additional Recommendations															
		Install Wayfinding Signs for the Refuge in the Surrounding Area	x			x		x		x	x					
		Develop Walking/Biking Trails	x													
	Develop a Formal Trail Map for the Refuge	x														
	Build upon Existing Kiosk Materials	x														
	Coordinate with Local Agencies and Municipalities to Encourage Usage of the Refuge	x			x		x		x	x						