



## **Public Scoping—Comment Period Open Until February 28, 2011**

# **Environmental Assessment for the Fort Pulaski Bridge**

The National Park Service (NPS), in cooperation with the Federal Highway Administration (FHWA), is initiating an Environmental Assessment for the repair or replacement of the Fort Pulaski Bridge. The Fort Pulaski Bridge provides access to Fort Pulaski from U.S. Highway 80 and crosses the South Channel of the Savannah River in Chatham County, Georgia.



**View of the bridge.**

The Fort Pulaski Bridge was originally constructed in 1938, and rehabilitated in 1965. More recently, repair projects in 1996 and 2008 have been completed to extend the life of the bridge. The repair projects addressed all serious structural deficiencies noted at the time, but primarily repaired the deteriorated piles. The piles were jacketed with a fiber-reinforced polymer (FRP) shell that was then filled with epoxy concrete to encapsulate the timber and thus protect it from further deterioration.



**A FRP jacket is shown on the timber pile.**

The completed repair work has limited long-term effectiveness. The FRP shells were not extended below the mud line; therefore further deterioration is likely. Also, the FRP shells are not of sufficient thickness to be viewed as a permanent structural repair.

The bridge continues to deteriorate. The bridge is constructed of timber piles and composite timber/concrete spans. The timber piles are vulnerable to marine borers that cause extensive damage to wood piles and speed up the deterioration rate by boring into and eating the wood.

The concrete spans have also deteriorated over time, as shown by the spalling. The bank protection on each end of the bridge, comprised of concrete and riprap, is undermined and gradually washing away.



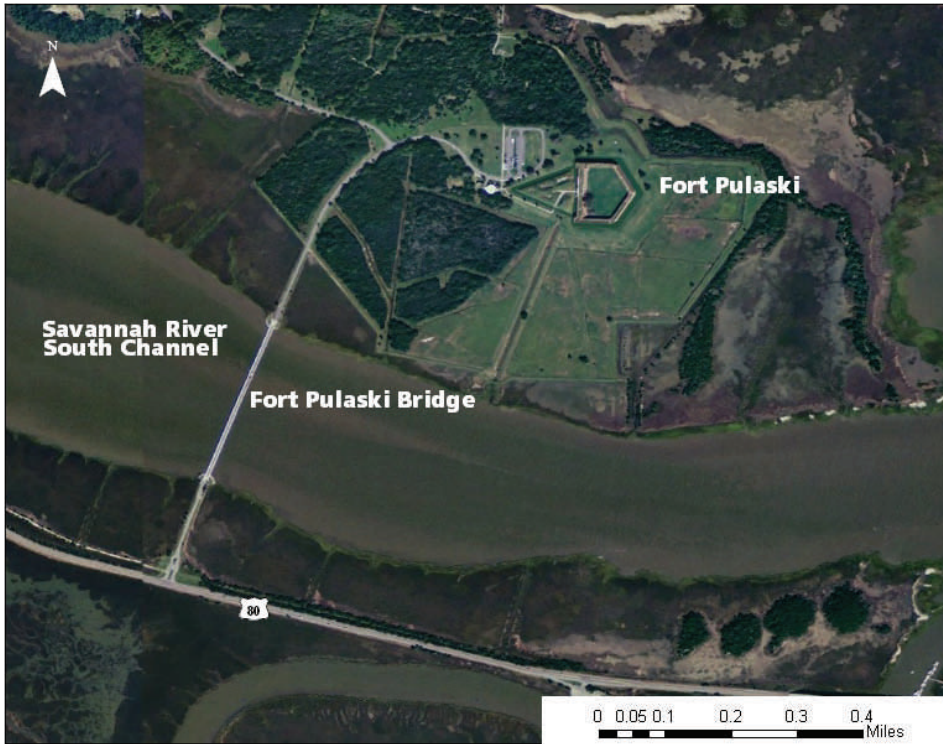
**The northeast embankment is washing away.**

## **NEPA Process**

The National Environmental Policy Act (NEPA) requires the NPS and the FHWA to consider potential environmental consequences of transportation improvements, document the analysis, and make the information available to the public. Public input is an important element in the project's initial scoping process to help identify potential courses of action, sensitive areas, and concerns in the study area.

The Environmental Assessment will present a range of alternatives. These alternatives will include repair alternatives, replacement alternatives, and the no action alternative. The environmental impacts resulting from the alternatives will be analyzed. The analysis will consider impacts to the natural, cultural, and social environment.

# Environmental Assessment for the Fort Pulaski Bridge Public Scoping—Comments Accepted Until February 28, 2011



Written comments may be submitted by mail and through the park's Planning, Environment, and Public Comment (PEPC) website at <http://parkplanning.nps.gov/fopu>. Click on the "Fort Pulaski Bridge" link to view the EA documents. Comments can also be mailed to: Superintendent, Fort Pulaski National Monument, P.O. Box 30757, Savannah, GA 31410-0757. To ensure that your comments are included in the process, all comments must be entered or postmarked by February 28, 2011.

National Park Service  
U.S. Department of the Interior  
Fort Pulaski National Monument  
P.O. Box 30757  
Savannah, GA 31410-0757

