

Partnerships for Environmental Public Health (PEPH)

Environmental Public Health is the science of conducting and translating research into action to address environmental exposures and health risks of concern to the public.

Examples of PEPH in Action

Promoting Research to Action

The first Funding Opportunity Announcement under the PEPH program was specifically designed to insure that environmental health science research leads to public health action. The key elements of the Research to Action initiative are:

- Co-develop projects by scientists and community members
- Collect information on environmental or occupational exposure, or exposure-related disease of concern to the community
- Use this new information to support public health action
- Evaluate the project's processes or outcomes



Building Partnerships to Strengthen Community-engaged Research

The Cincinnati Anti-Idling Campaign project between the University of Cincinnati, the Cincinnati Public Schools, and the Cincinnati Health Department worked to gather more data about the health risks associated with school bus idling and to develop strategies to reduce school children's exposure to air pollution.

The partners collaborated to collect and analyze relevant data, to develop and implement an anti-idling campaign, and to train bus drivers about idling policies. The campaign was successful because the partners understood and leveraged the resources that each brought to the project.

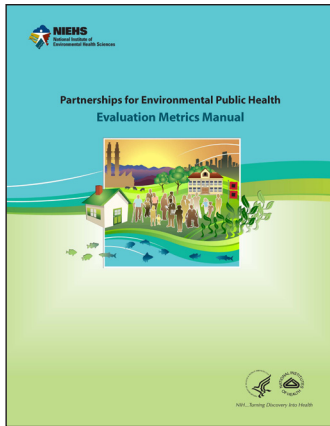
The partnership laid a foundation for future projects in which the partners can collaborate to address public health concerns.

Fostering Bidirectional Communication

Several larger environmental health science research programs support integrated outreach offices to establish and promote open communication between researchers and community residents.

For example, the Community Outreach and Translation Core at the University of California, San Francisco, Bay Area Breast Cancer and the Environment Research Center takes the community's concerns into account while conducting research and, in turn, translates and disseminates the research findings back to the communities so the results can be used to make informed personal decisions.

This bidirectional approach has led to research that addresses specific environmental exposures of concern to community groups, and to the development of a video to improve the public's understanding about how and why mouse models are needed to study breast cancer.



Evaluation Metrics Manual

The PEPH Evaluation Metrics [Manual](#) provides examples of tangible metrics that PEPH grantees and program staff can use for both planning and evaluation. Example logic models are used as a means to develop evaluation metrics for crosscutting PEPH themes such as partnerships, leveraging, products and dissemination, education and training, and capacity building. PEPH grantees and their project partners are the primary target audience for this document. The manual is available online at www.niehs.nih.gov/pephmetrics.

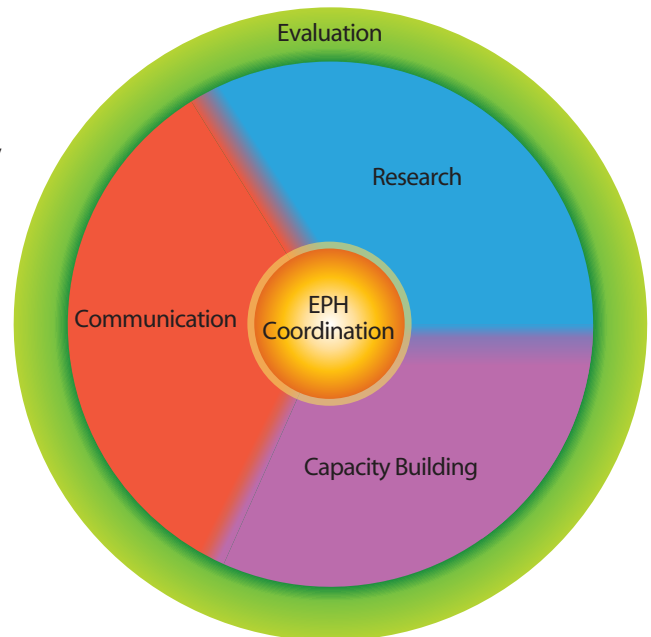
Goals of Partnerships for PEPH

- Coordinate and integrate new and existing initiatives involving communities and scientists collaborating on environmental public health research.
- Develop and evaluate strategies to communicate environmental public health messages to diverse audiences.
- Create and distribute materials to increase awareness and literacy about environmental health risks.
- Evaluate the program’s contributions to advancing environmental public health.

Key Principles of PEPH

- Engage diverse communities at all stages
- Promote the best science
- Respond to current issues
- Focus on prevention
- Foster unified, integrated, and synergistic activities
- Support research to improve theories, methods, and practice
- Value scientific advances and translational efforts
- Promote research to action

PEPH Model – coordinated activities in research, communication, capacity building, and evaluation.



For more information, contact:

Liam O’Fallon
Email: ofallon@niehs.nih.gov
Phone: 919-541-7733

For more information on the PEPH program, visit <http://www.niehs.nih.gov/PEPH>