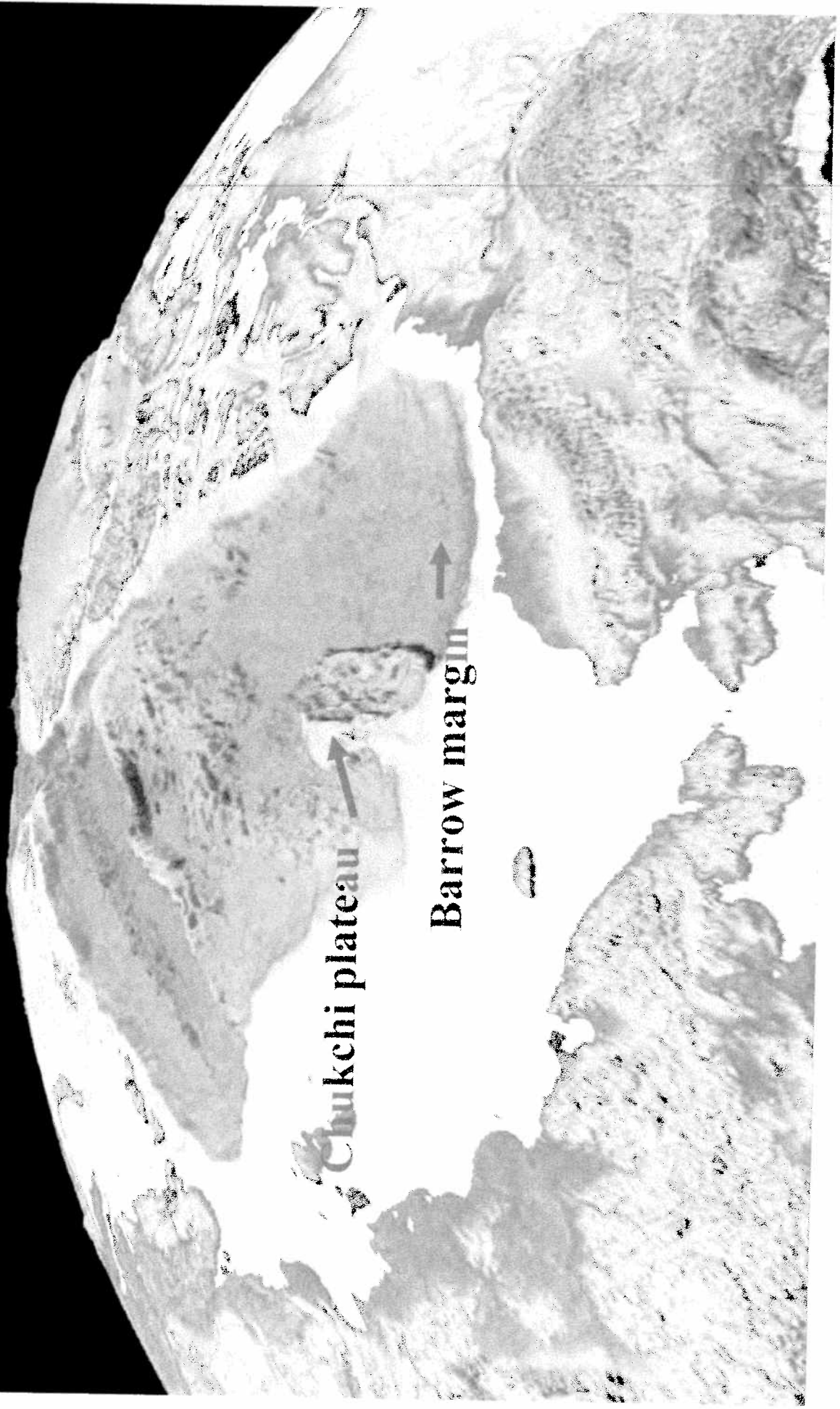
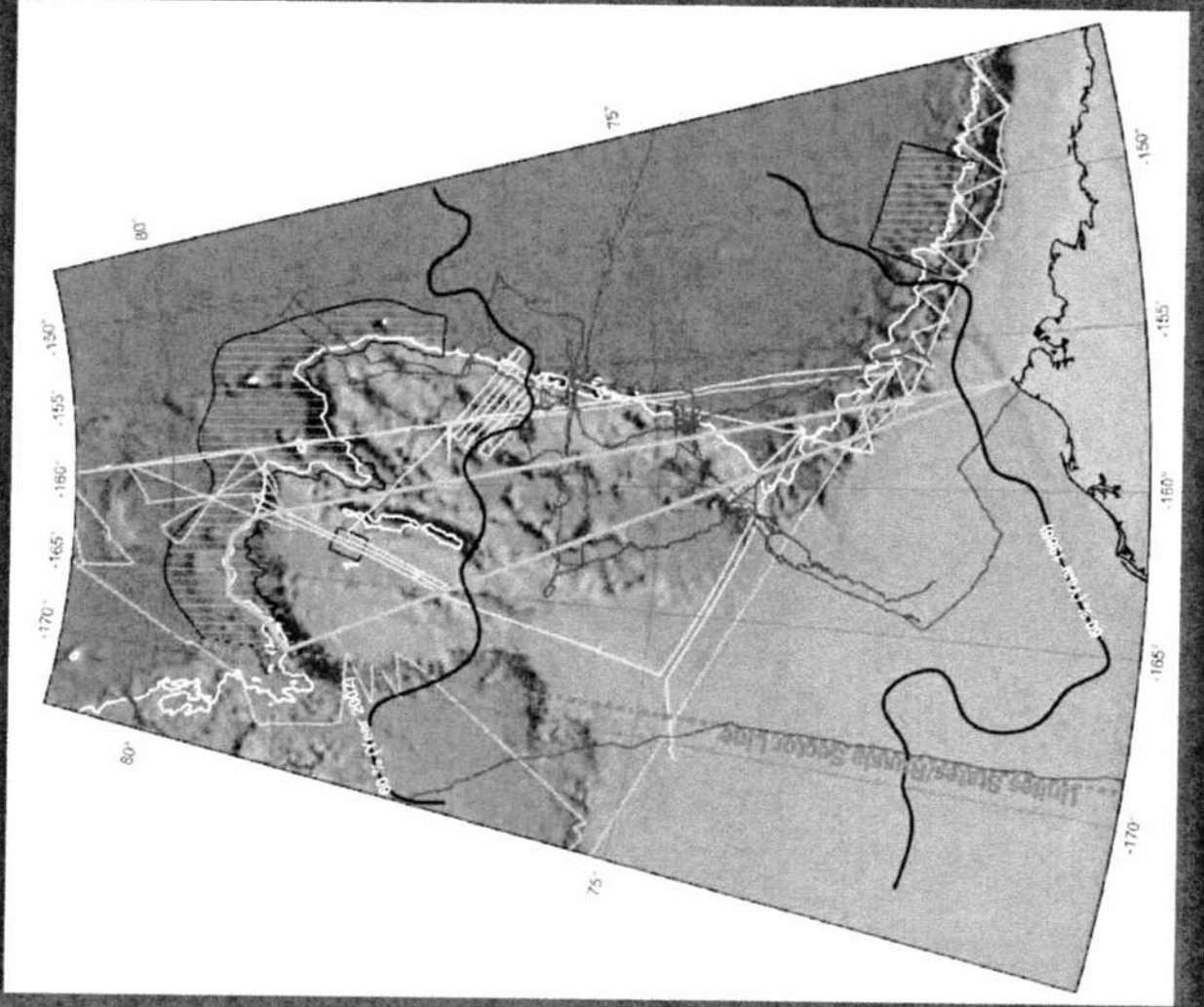


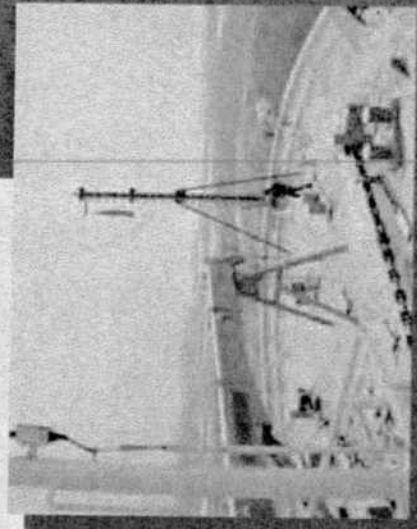
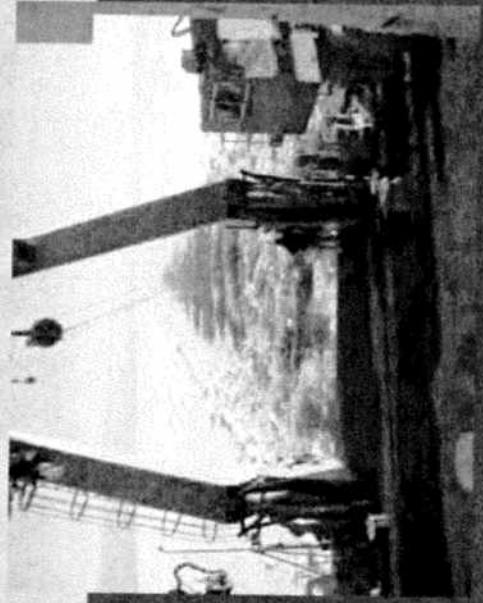
2003 & 2004 & 2007



HEALY 03-02 Sept 2003



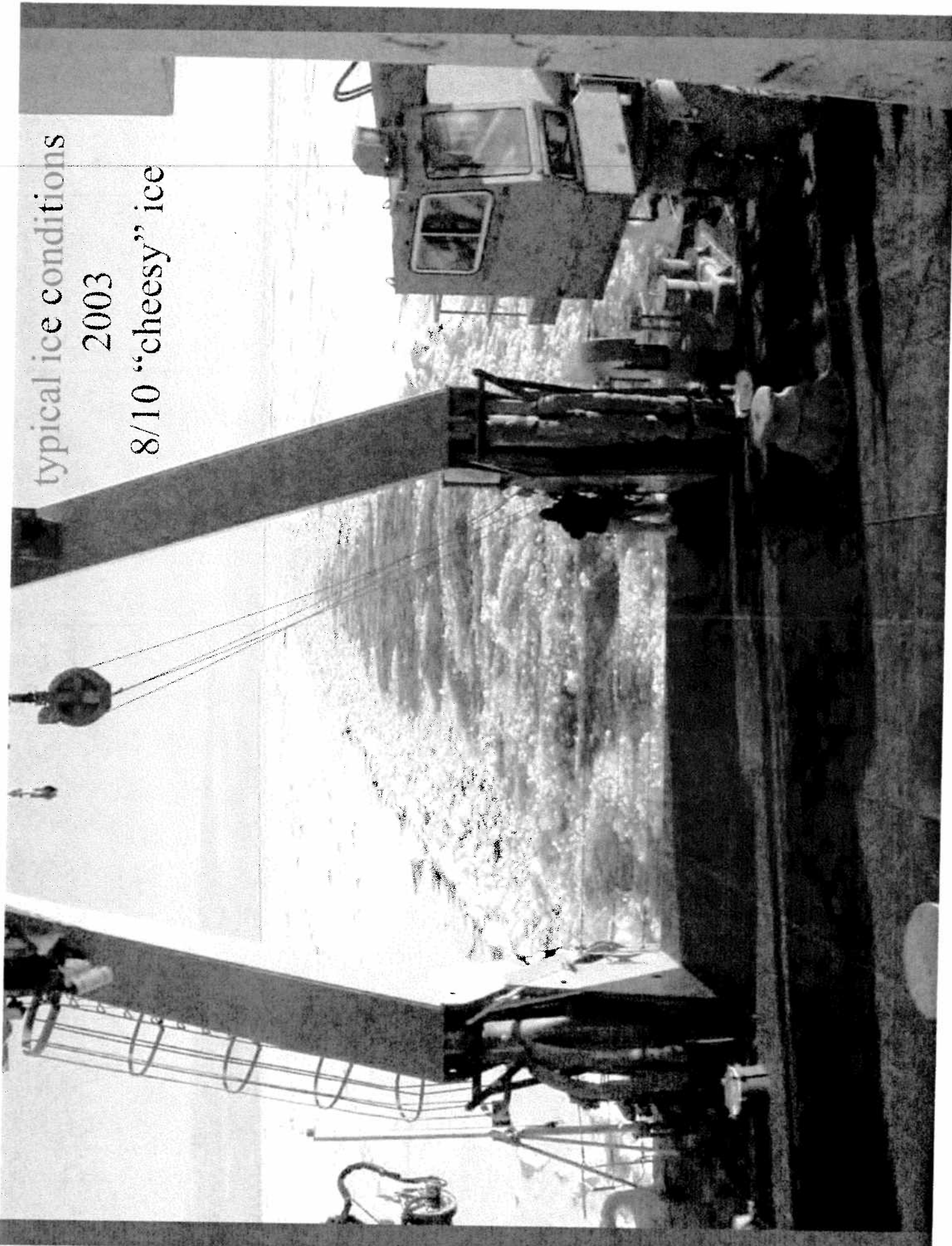
HEALY 03-02 Chukchi Cap



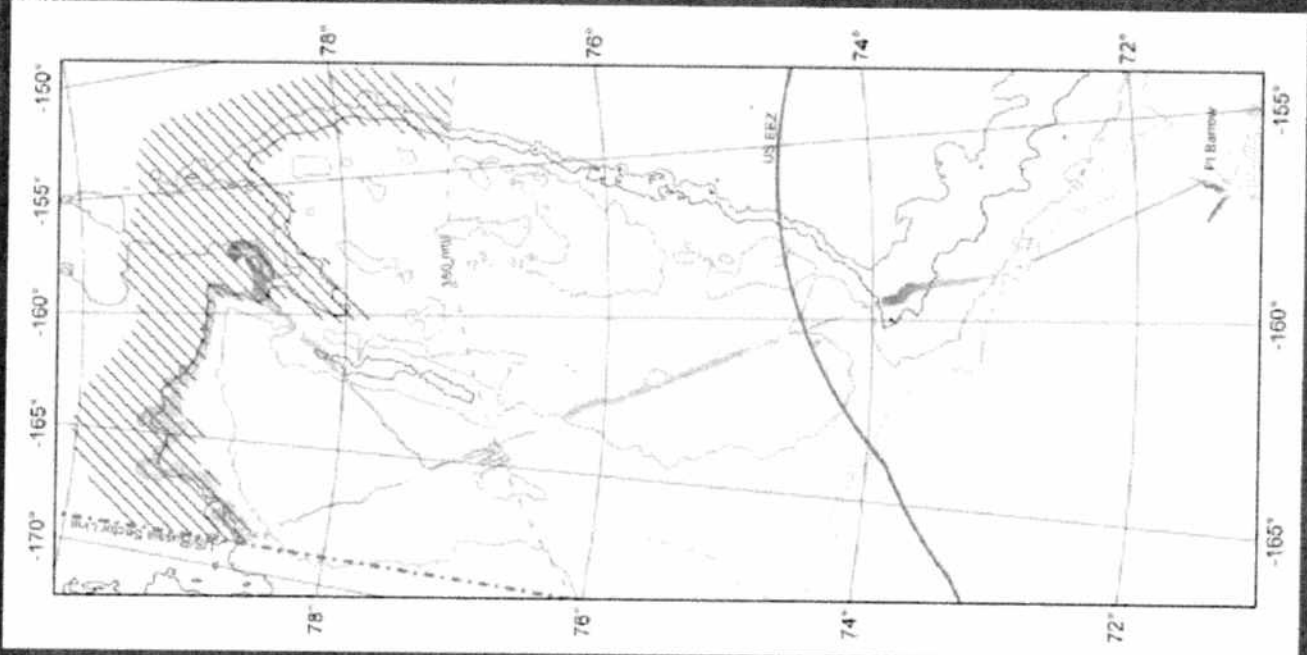
typical ice conditions

2003

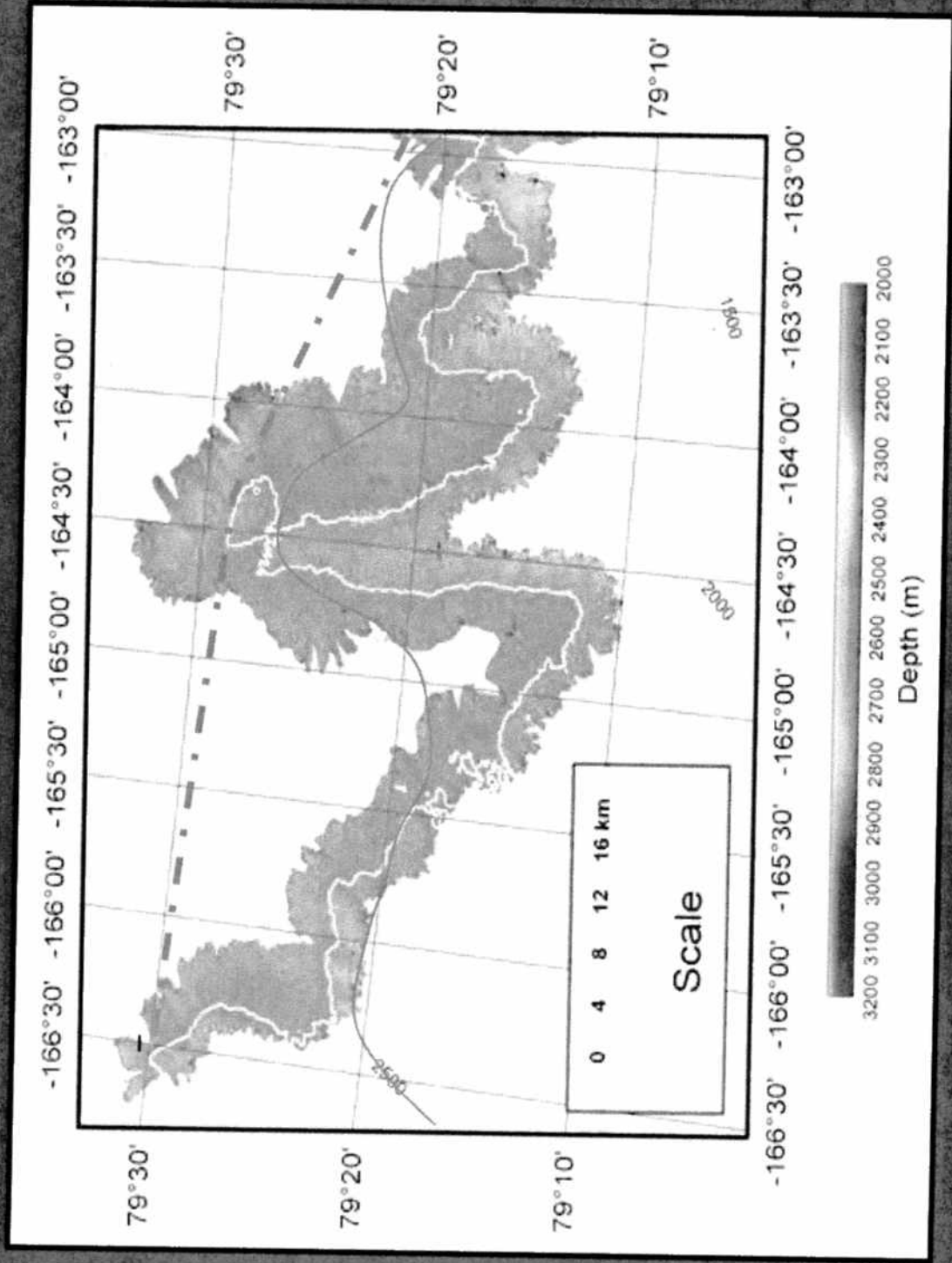
8/10 "cheesy" ice



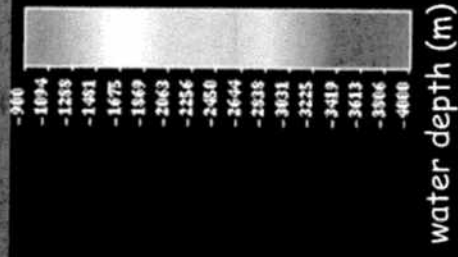
Healy 03-02
~3000 km of
multibeam
sonar
bathymetry
1-11 Sept 03
8/10 ice



Redefinition of the 2500 m contour

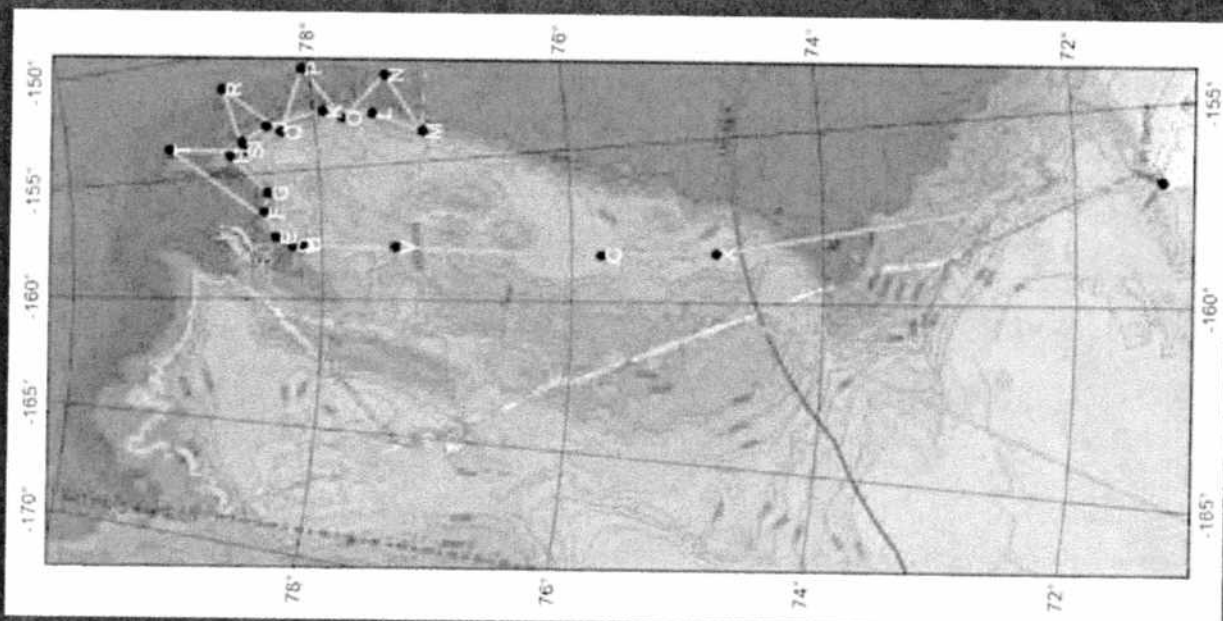


**Healy Seamount
looking S, ve=6x**

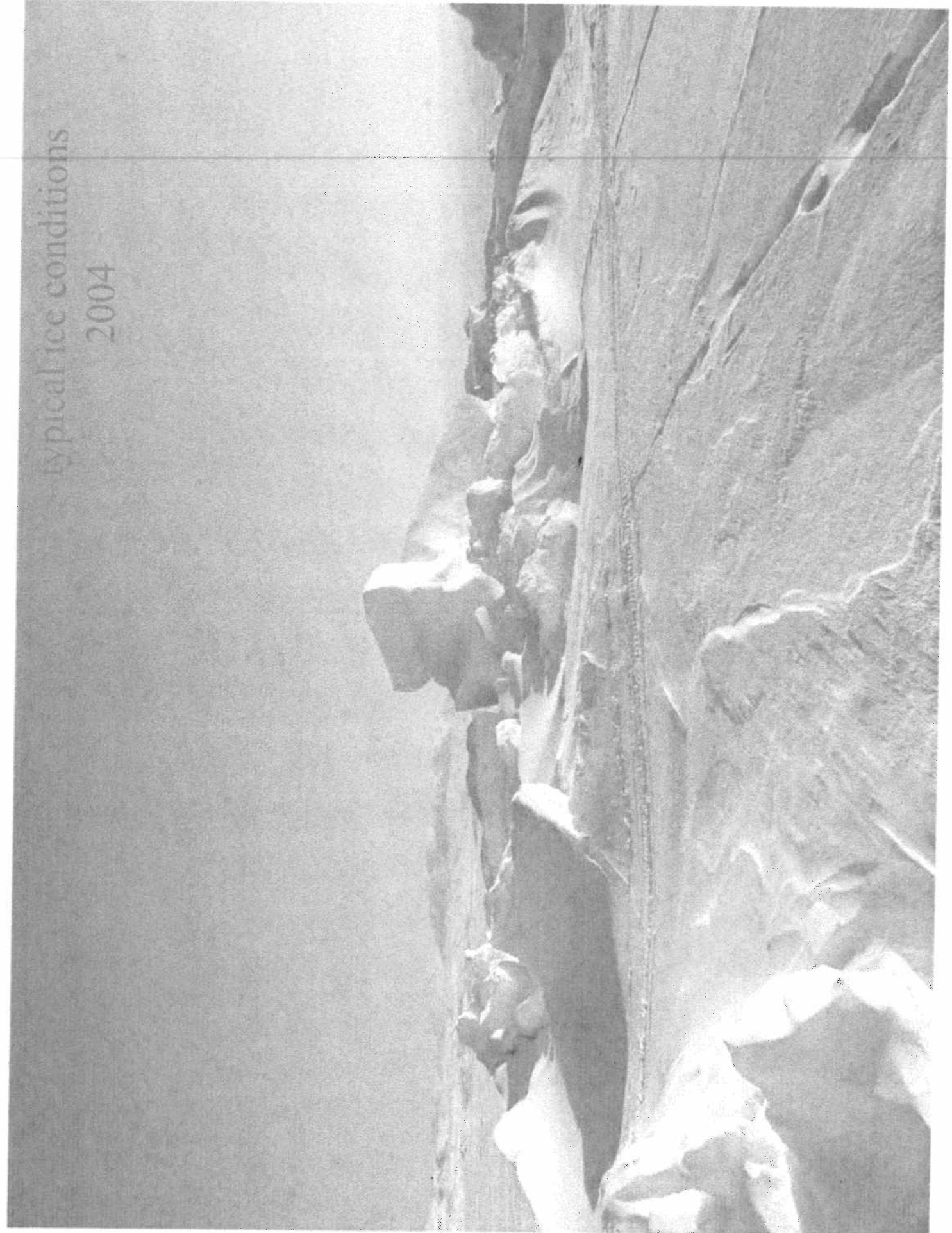


**3100 m high, summit at 900 m water depth
45 km long x 15 km wide**

HEALY 2004

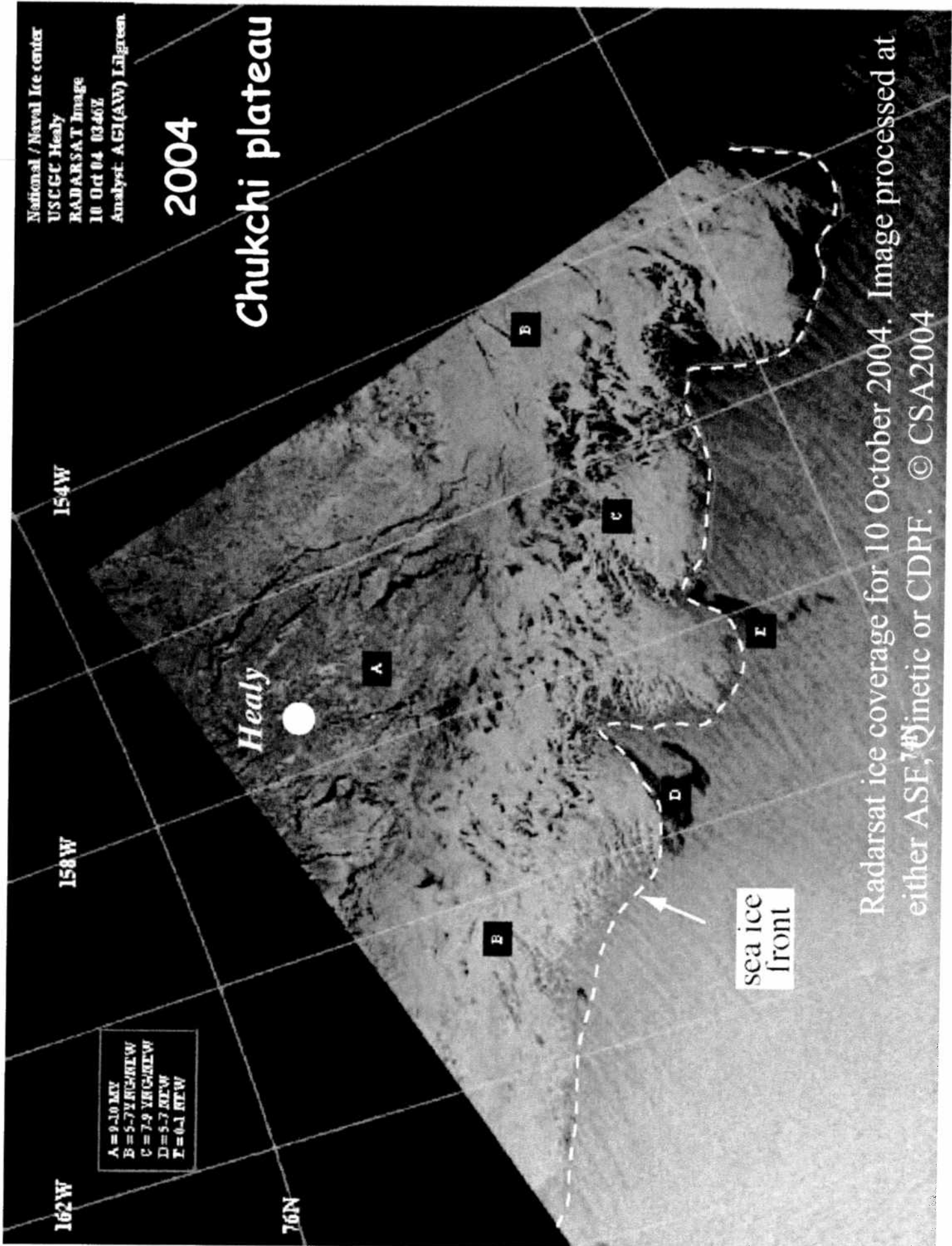


typical ice conditions
2004



National / Naval Ice center
USCGC Healy
RADARSAT Image
10 Oct 04 03:46Z
Analyst: AGL(AW) Lilgreen.

2004 Chukchi plateau

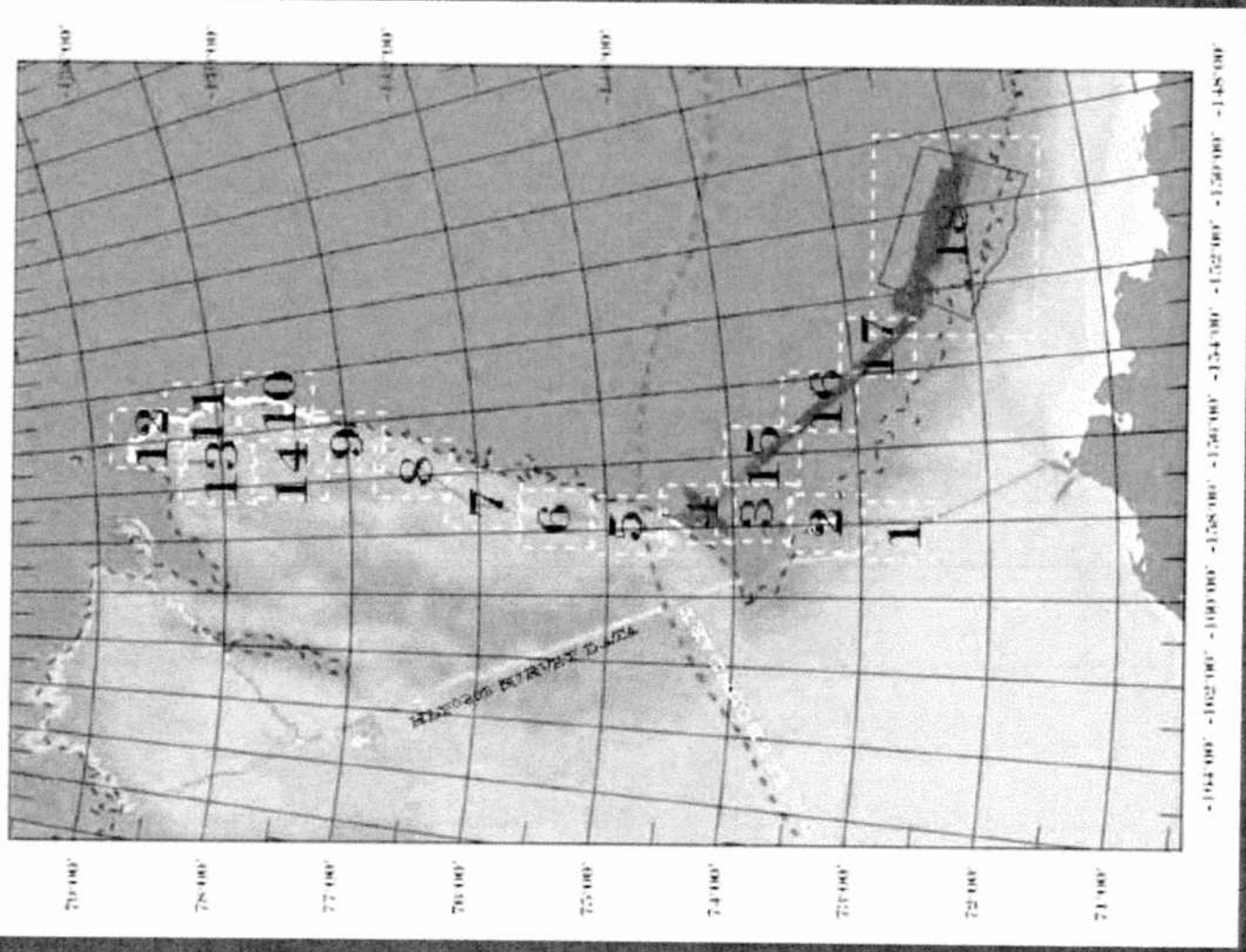


Radarsat ice coverage for 10 October 2004. Image processed at either ASF, Genetic or CDPF. © CSA2004

**HEALY 04-
05 TRACK**

**6-26 Oct.
2004**

6700 line km



mapped 2500-m isobath

ridges
<300 m high,
~100 km long

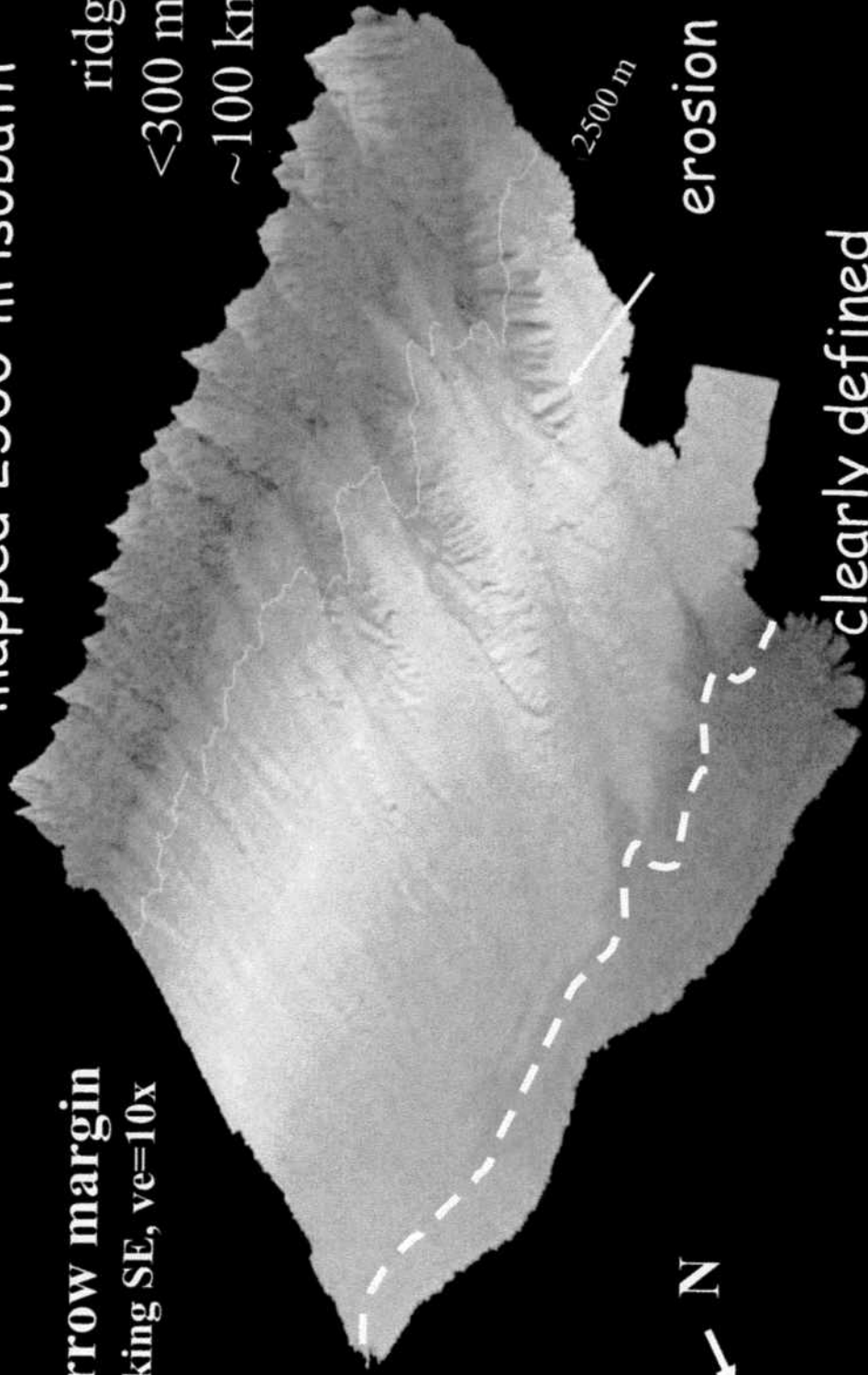
2500 m

erosion

clearly defined
foot of the slope

Barrow margin
looking SE, ve=10x

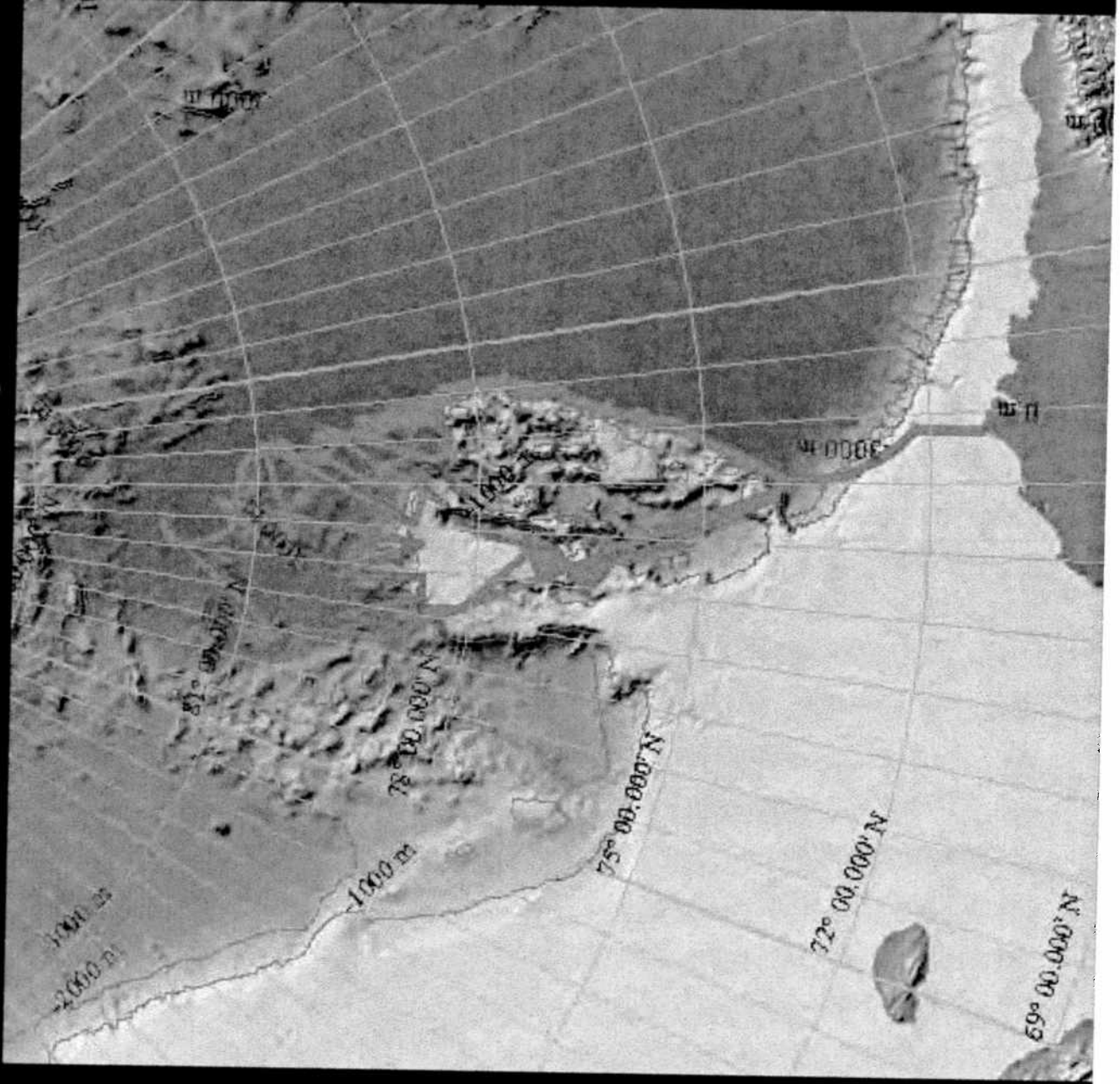
N

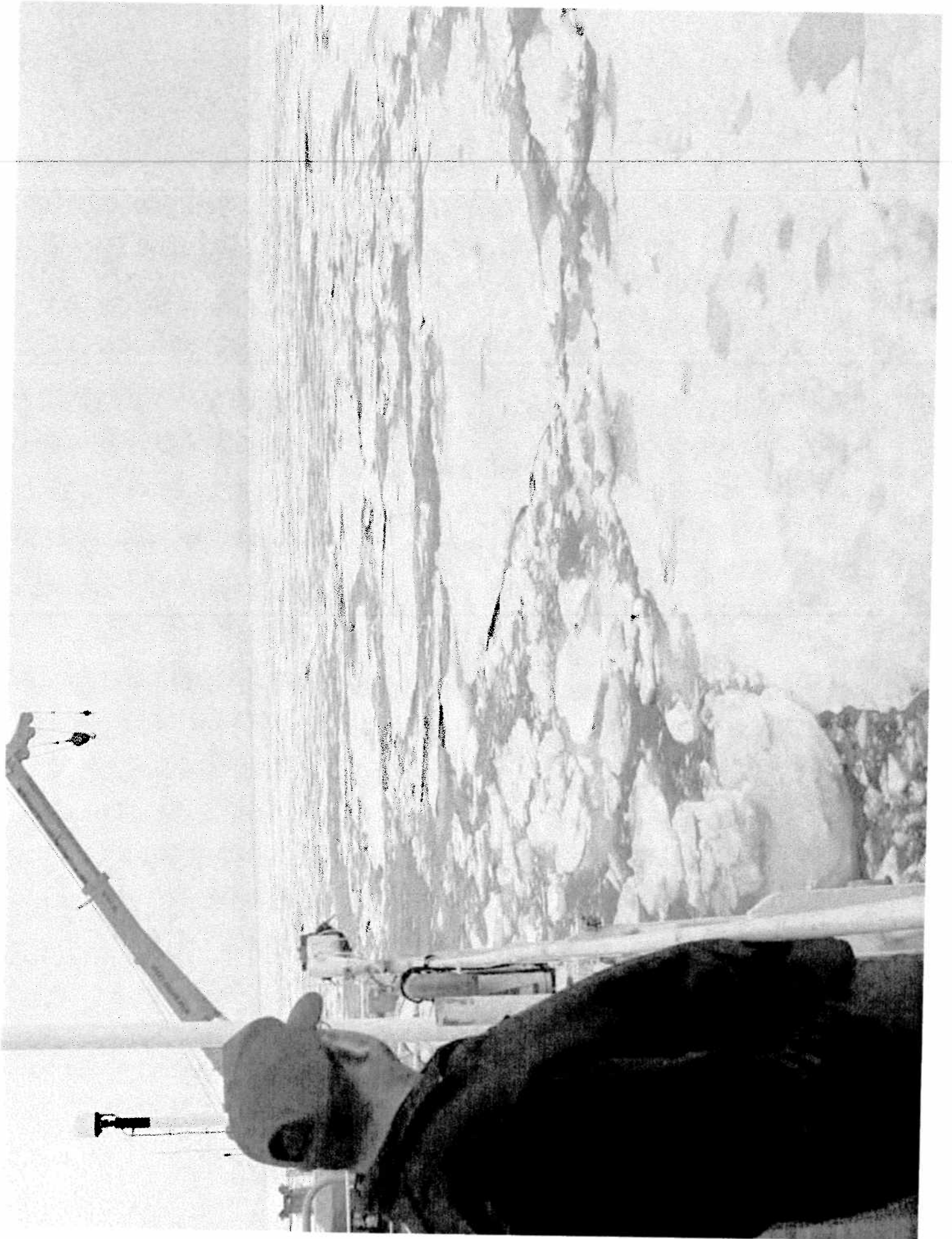


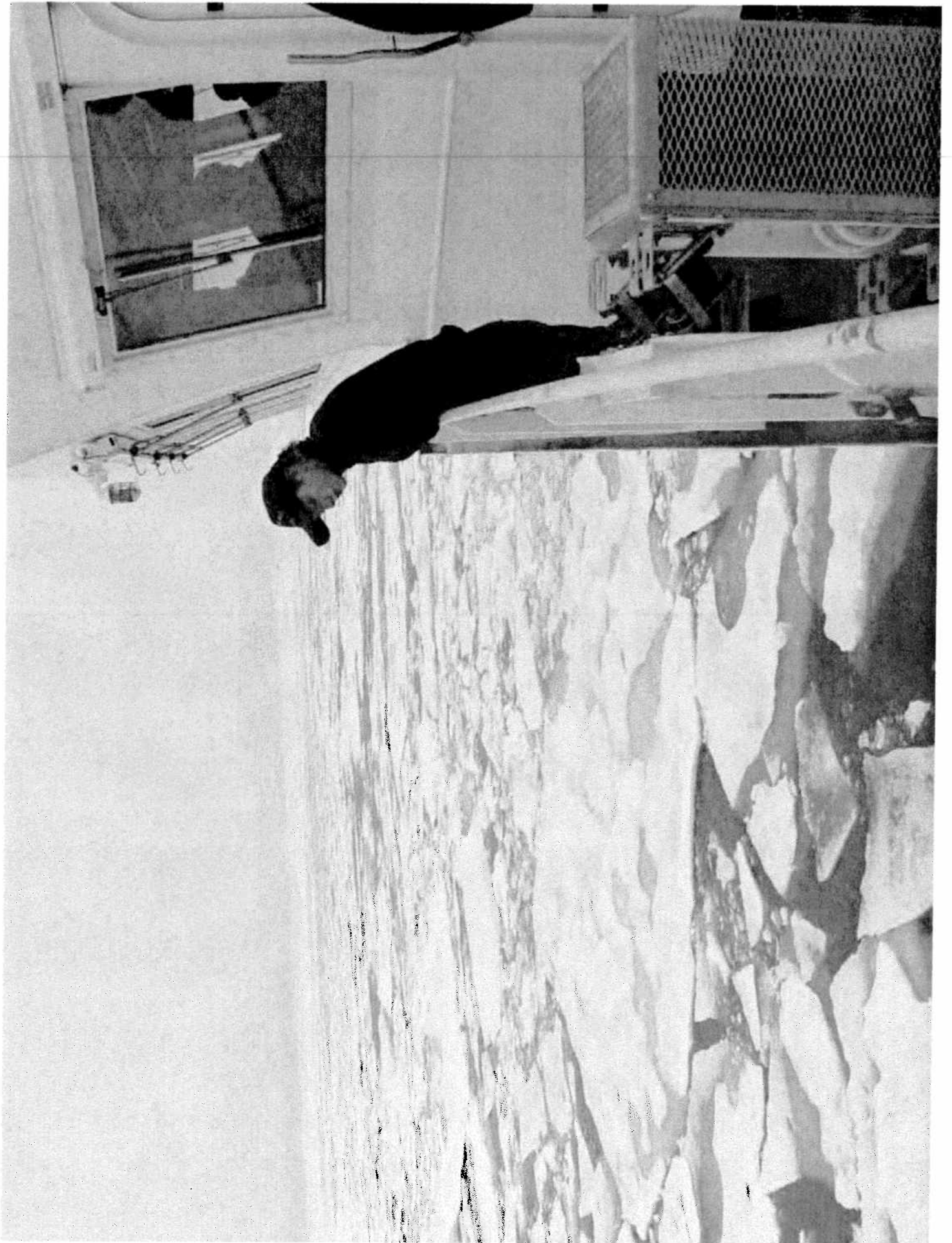
HEALY 07-03

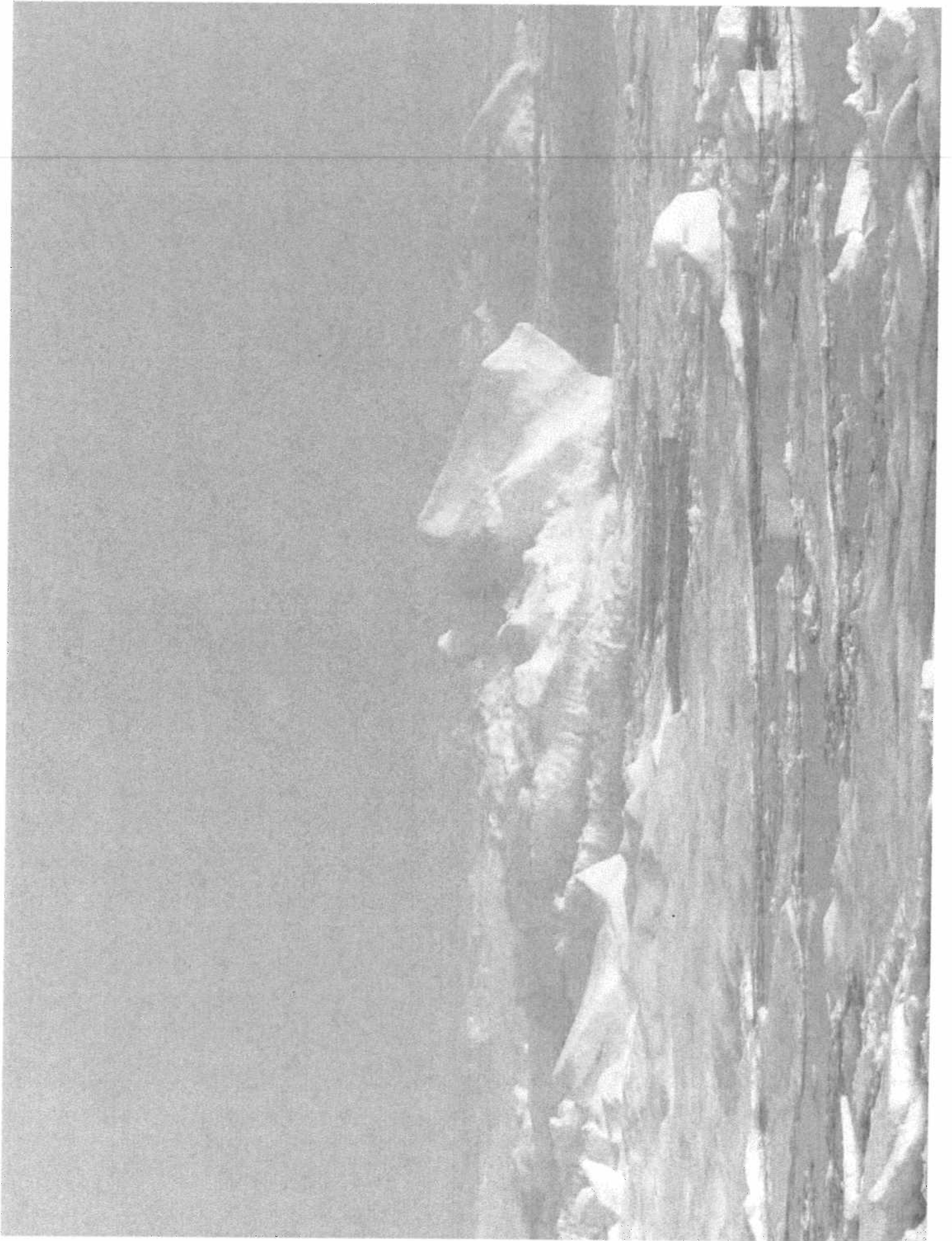


HEALY 0703





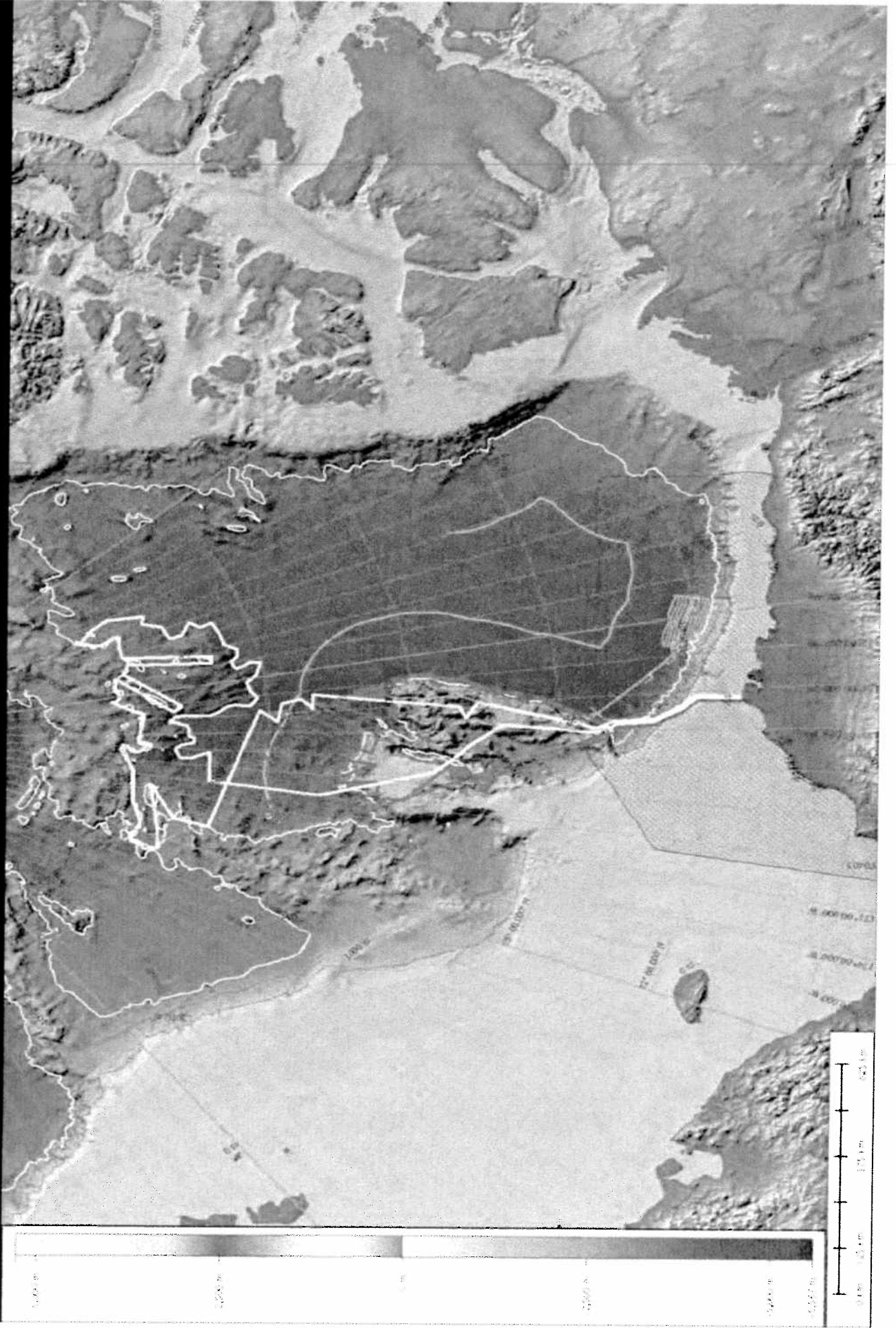


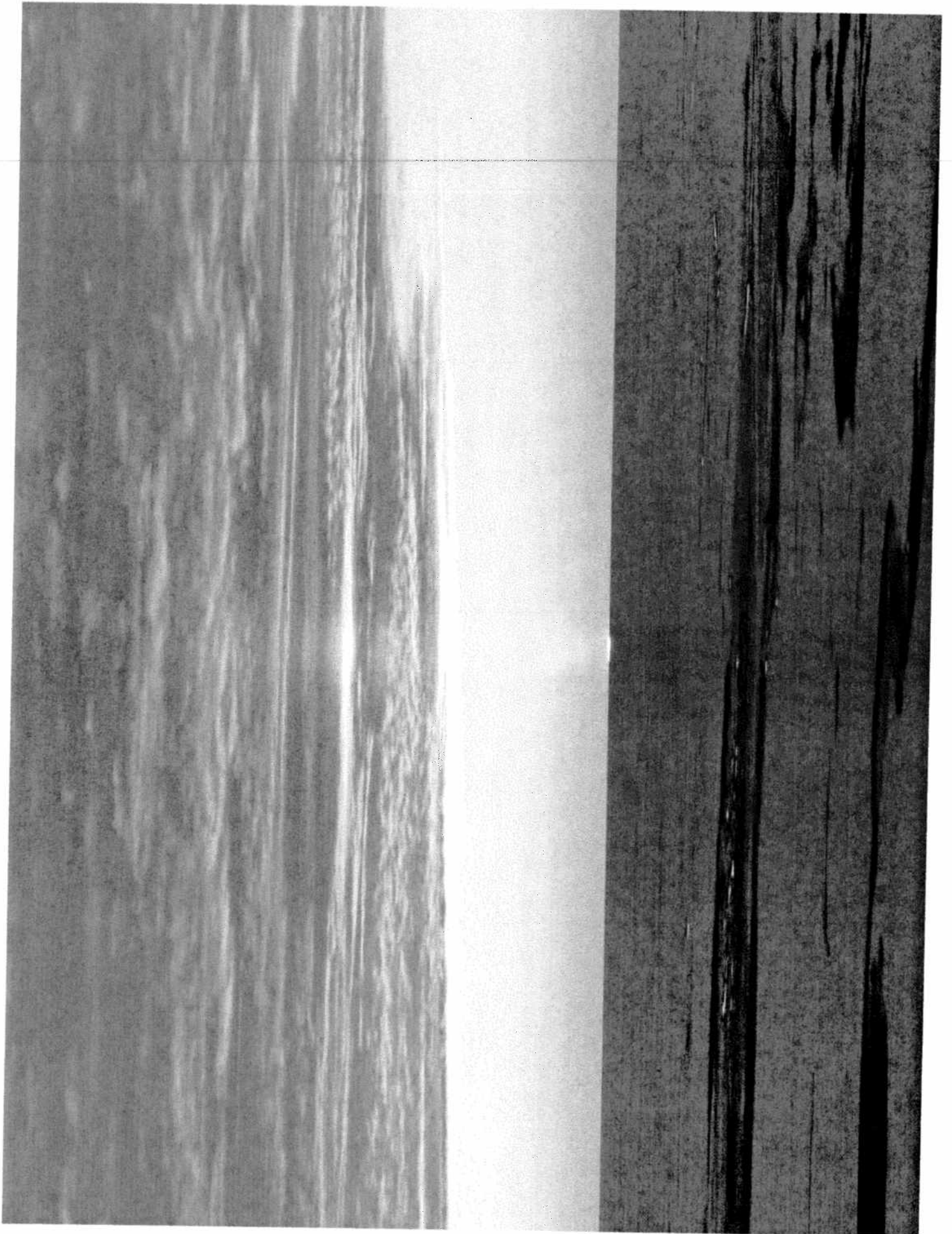


Healy 03-02, 04-05, 07-03

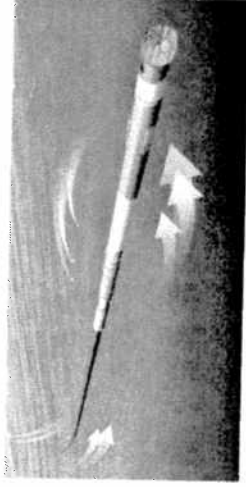
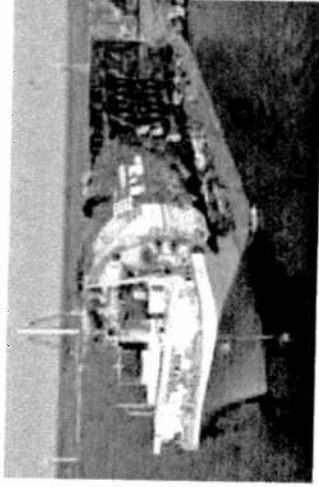
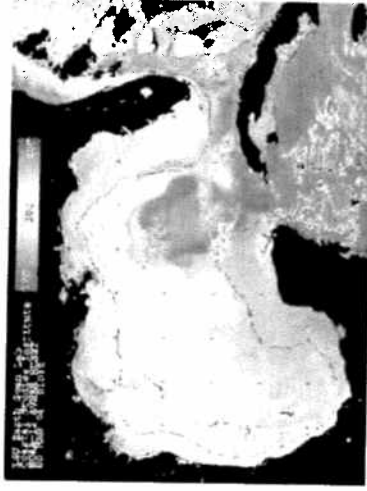


HEALY 0805 - PROPOSED SHIPTRACK





Arctic Offshore Energy: The Promise and the Challenges



**National Ocean
Industries
Association**

Kim Harb
Director of Policy
and Government
Affairs

www.noia.org