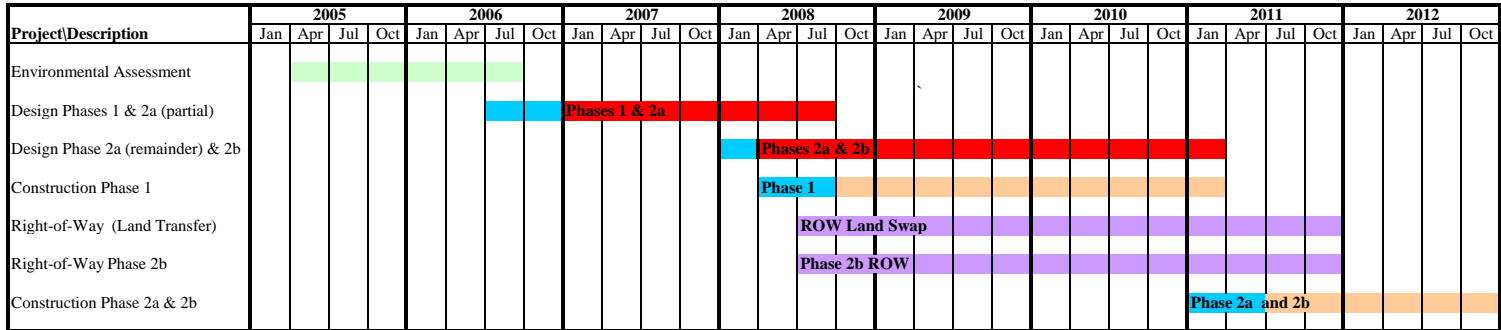


Project Timeline

**Mulligan Road (Richmond Highway-Telegraph Road Connector)
Design/Construction Timeline (July 2011)**



■ Environmental
 ■ Design
 ■ Advertise/Award
 ■ Construction
 ■ Right-of-Way

PE=Preliminary Engineering

- Assumptions:
1. Phase 1-Mulligan Road from Pole Road to Telegraph Road; Grading and drainage of 4 lanes, base course, trail, SB bridges (no paving)
 2. Phase 2a-Intersection improvements at Richmond Highway-Route 1, Old Mill Road, Woodlawn Plantation, NB bridges, curb and gutter, & final paving of 4 lanes
 3. Phase 2b-Telegraph Road Widening to 4-lanes from Beulah Street to Leaf Road