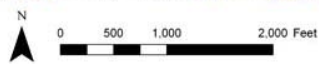
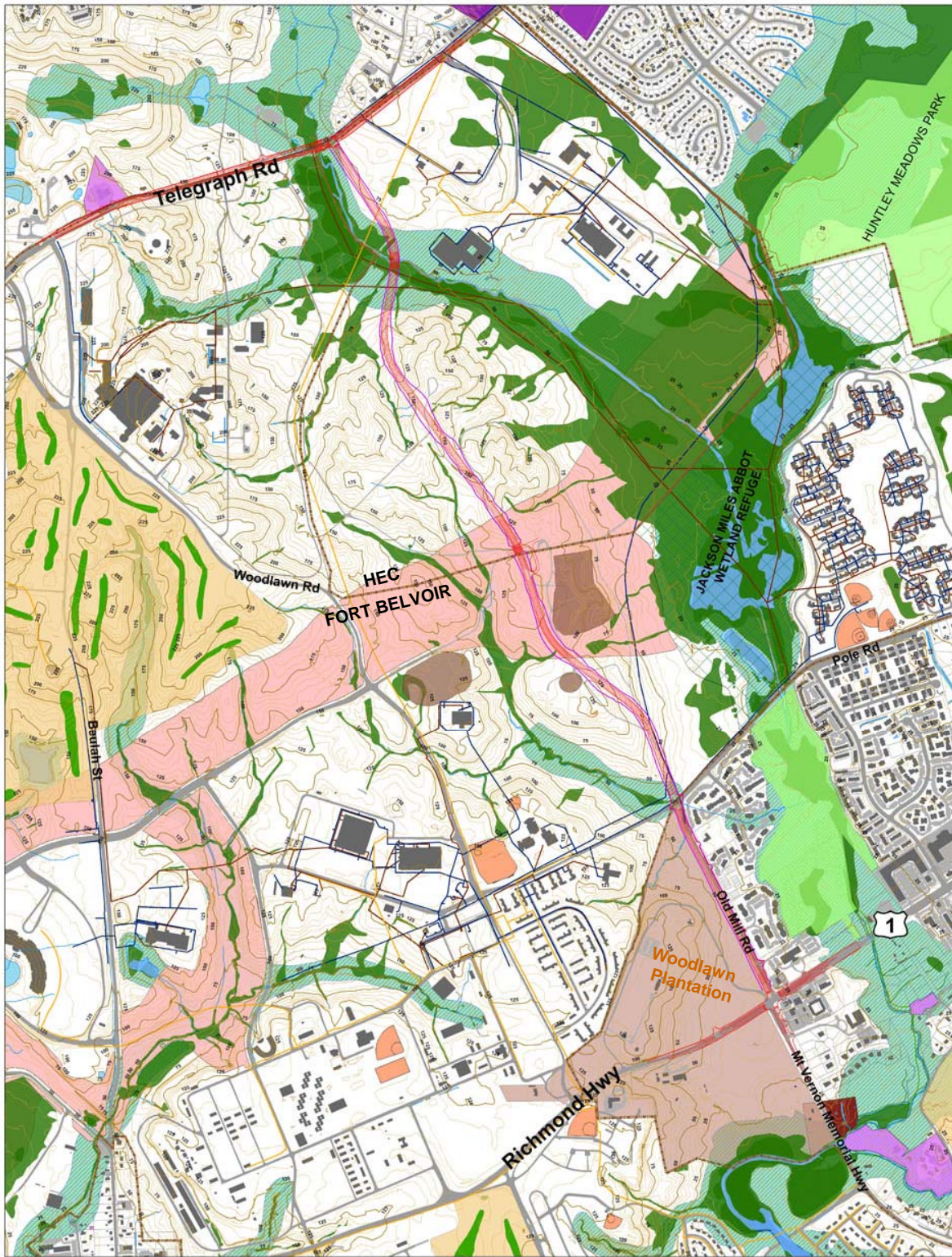


**Southern Terminus Concept**

**Figure 4-1**





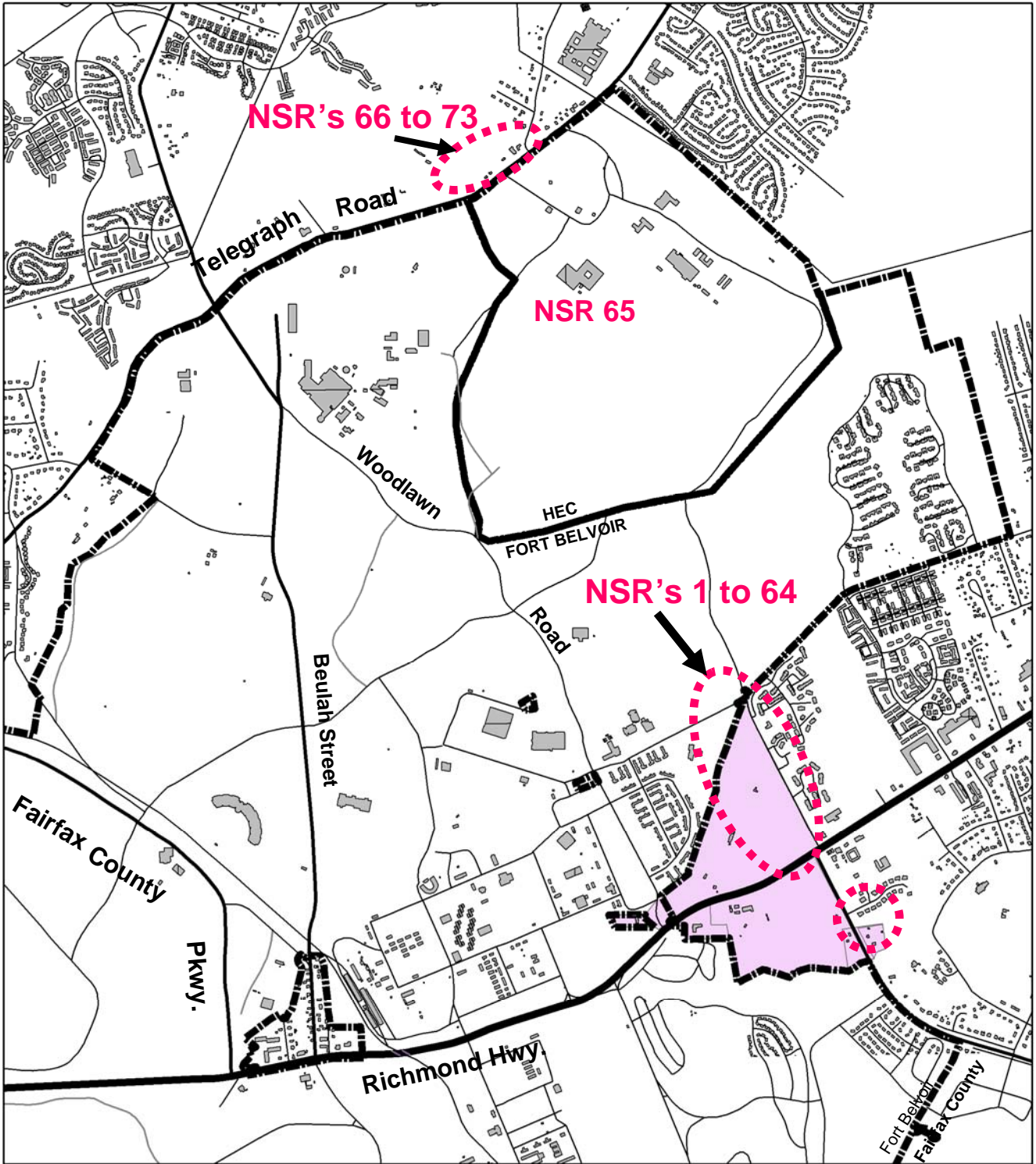
- Legend**
- Alignment 4CR Pavement (3-15-06)
  - Alignment 4CR LOC (3-15-06)
  - Fort Belvoir/HEC Boundary
  - Woodlawn Historic District
  - George Washington's Gristmill
  - Landfills
  - Open Water
  - Wetlands
  - Resource Protection Area
  - Forest and Wildlife Corridor
  - Fairfax County Schools
  - Other County Property
  - Parks - Fairfax County Park Authority
  - Golf Course
  - Fort Belvoir Athletic Fields
  - Gas Main Line
  - Water Main Line
  - Wastewater Main Line



## Environmental Constraints

FHWA Richmond Highway-Telegraph Road Connector  
Environmental Assessment

Figure 4-2

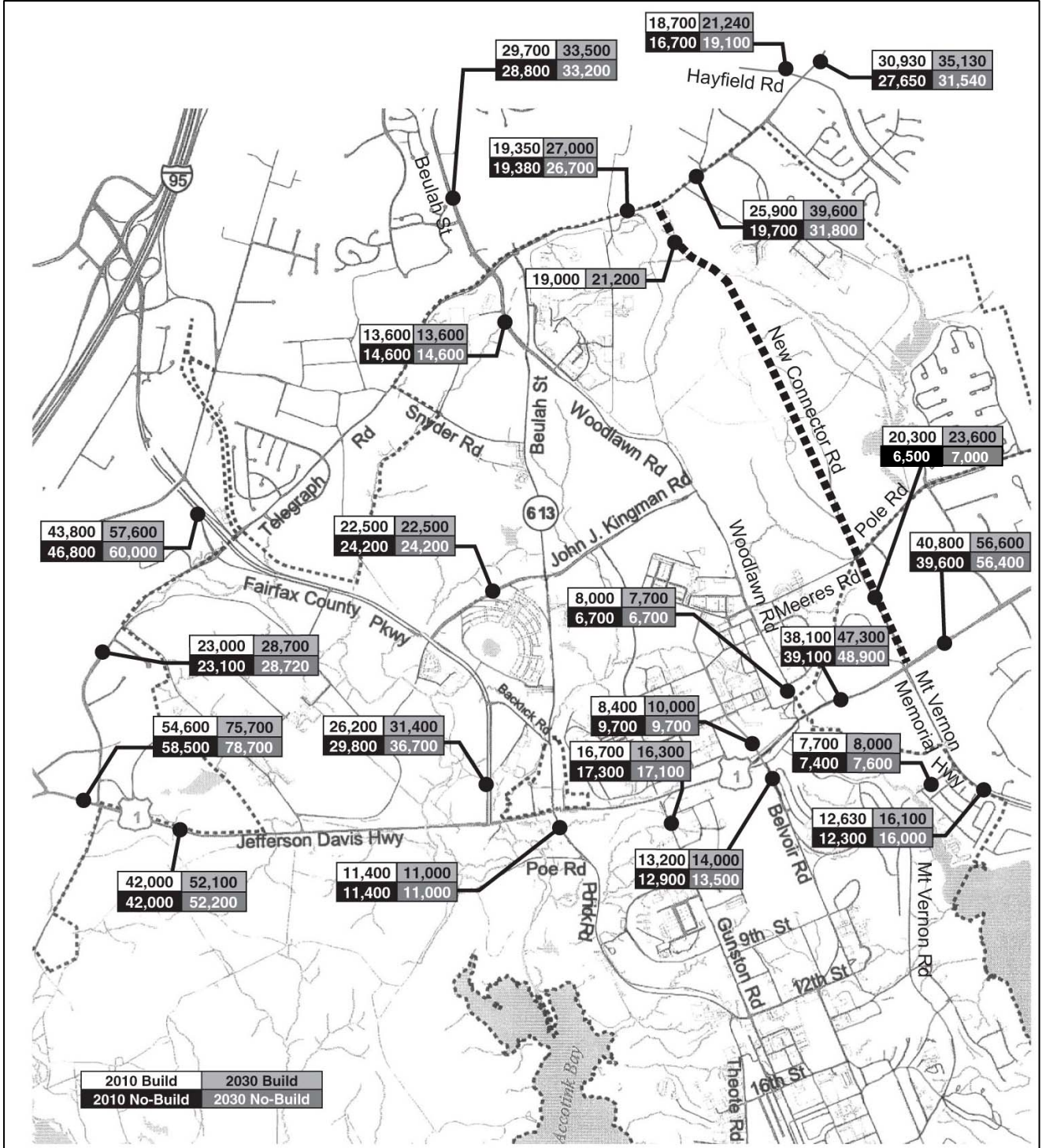




-  Fort Belvoir/HEC Boundary
-  Woodlawn Historic District

**Noise Sensitive Receptors**

**Figure 4-3**



2010 Build	2030 Build
2010 No-Build	2030 No-Build

### Future ADT Volumes

Figure 4-4