

SUSTAINMENT C2 AND THE BATTLE COMMAND COLLAPSE STRATEGY

Project Manager Battle Command's Collapse strategy significantly enhances commander and staff's abilities to effectively conduct collaborative mission planning and execution. Sustainment C2 is the primary component within the BC Collapse framework that provides near-real-time tracking and status of military and commercial assets at sea, in the air and on the ground, conveying military significant cargo.

Under BC collapse strategy, Sustainment C2 will:

- Provide critical logistics/sustainment information onto the BC Workstation with the introduction of a Commander's Dashboard, allowing visualization of sustainment data
- Leverage the flexibility of web services to expand user access to an enhanced set of Sustainment C2 capabilities. Incorporate combat power, running estimate report displays into the BC collaborative environment
- Merge and migrate existing BCS3 and BCS3-NM functionality and provide ITV functionality via National Enterprise Data Portal as web services

The Warfighter will be able to obtain instant sustainment situational awareness.

SUSTAINMENT C2 FAST FACTS

- Today, there are approximately 5000 BCS3 thick clients deployed throughout U.S. land forces.
- Selected capabilities of BCS3 will be integrated into the BC Workstation as a part of the BC Collapse strategy, including combat power, selected in-transit visibility, sustainment-related automated alerts, logistics reporting and commander's dashboard.
- BCS3-NM is an extension of "core" BCS3 that offers access to an expanded set of ITV and AV data.

PM Battle Command
<http://peoc3t.monmouth.army.mil>

PEO C3T Technical Industrial Liaison Office (TILO)
<http://peoc3t.monmouth.army.mil/TILO.html>



SUSTAINMENT COMMAND AND CONTROL

Bridging the Sustainment C2 Digital Divide



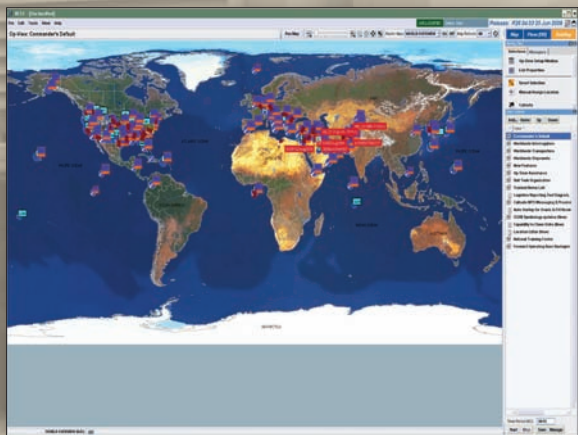
Sustainment C2 Customer Support Center:
(866) 370-4828
bcs3.helpdesk@us.army.mil

Single Interface to the Field: (877) 839-0813
<https://home.kc.us.army.mil/sifsplash.nsf/psplas>

PEO C3T
PROGRAM EXECUTIVE OFFICE COMMAND CONTROL COMMUNICATIONS-TACTICAL

WHAT IS SUSTAINMENT C2?

Sustainment Command and Control (C2) is one of the components of Project Manager Battle Command (PM BC), Program Executive Office Command, Control and Communications Tactical (PEO C3T). Sustainment C2 provides Sustainment products employed at multiple echelons that fuse sustainment, in-transit and force information to aid commanders in making critical decisions within the construct of the Army Battle Command System (ABCS) Common Operational Picture (COP). There are two product lines in Sustainment C2: Battle Command Sustainment Support System (BCS3), and Battle Command Sustainment Support System-Node Management (BCS3-NM) that deliver critical sustainment information to the joint, interagency, intergovernmental and multinational users to support planning, coordinating, controlling and executing missions.



PM BC MISSION: Provides Integrated Battle Command Capabilities, training and support to the Joint Land Component Warfighter. PM BC's products enable Warfighters to plan and execute and synchronize tactical and operational warfighting functions to include maneuver, fires, sustainment, airspace management, and air defense. PM BC also procures a common hardware computing baseline used by a broad range of Army products.

SUSTAINMENT C2 FAMILY OF SYSTEMS

BCS3

BCS3 enables commanders and their staffs to effectively conduct collaborative mission planning, coordination, control and execution across the full spectrum of military operations. It is an automated sustainment support system that provides integrated functionality within a common Battle Command architecture.

BCS3 supports sustainment operations by providing a COP with map-centric functionalities that enable end users to access, scale, and tailor critical sustainment information in near-real time. Specifically, BCS3 offers its user's access to a Logistics Reporting Tool (LRT) that provides a standardized format for submission of sustainment status reports, in-transit visibility (ITV) of supplies and equipment in the distribution pipeline, and asset visibility (AV) of resources with the units and supply points.

BCS3 NODE-MANAGEMENT

BCS3 Node-Management is a distribution management software application derived from the "core" BCS3 application, employing strategic extensions to current BCS3 capabilities, integration of additional joint ITV and AV data sources and with improved ease of use. BCS3-NM provides a COP for distribution management focused on supply storage and distribution nodes, providing capabilities to view and manipulate data from both a map and in data tables.

BCS3-NM provides a COP of distribution operations from source to supply support activity using BCS3 as its application foundation. BCS3-NM enables Warfighters to view early warning of emerging theater supply distribution problems and access visibilities of stockage at all classes of supply. Another feature of BCS3-NM is that it incorporates data from numerous authoritative systems into one system.

