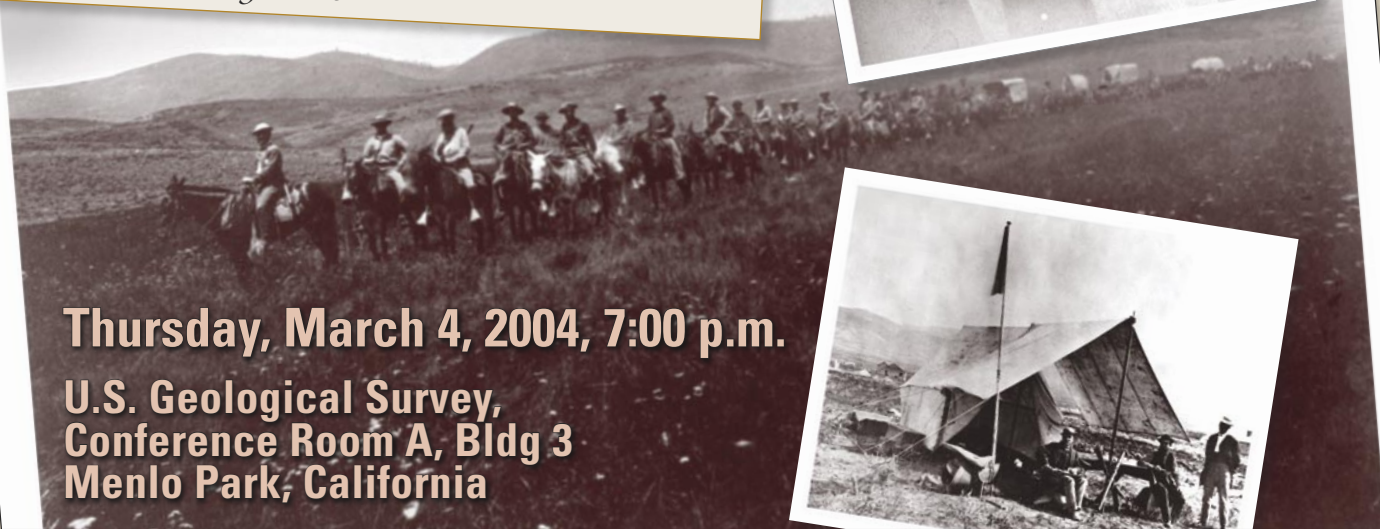
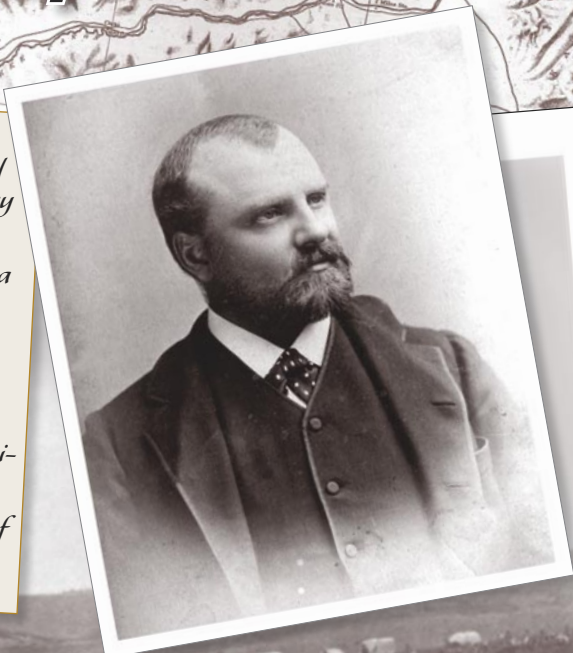


Mapping the American West

Clarence King and the 40th Parallel Survey

By James G. Moore, Geologist

- After completing a geology degree at Yale and coming West in a wagon train, Clarence King worked with the California Geological Survey and was in the field party that discovered Mount Whitney
- King led the United States Geological Exploration of the 40th Parallel (1867-79), which mapped topography and geology along a 100-mile-wide strip across Nevada, Utah, and Wyoming
- King discovered the first known glaciers in the U.S., exposed the "great diamond hoax" of 1872, and wrote "Mountaineering in the Sierra Nevada", a book that became a classic in western writing
- In 1879 Clarence King became the founding Director of the U.S. Geological Survey, the Nation's first civilian government science agency
- King's enduring legacy includes excellence in combining mapping of geology and topography and supporting geologic field work with a full range of laboratory studies



Thursday, March 4, 2004, 7:00 p.m.

U.S. Geological Survey,
Conference Room A, Bldg 3
Menlo Park, California

125 years of science for America



1879-2004

U.S. Department of the Interior • U.S. Geological Survey • Western Region Center

The Earth Science Information Center (Map and Publication Sales) in Building Three will remain open until 7:00 p.m. on the evening of the lecture. Map for lecture site on reverse. For information on USGS public events, call (650) 329-5000 or visit our website at <http://online.wr.usgs.gov/calendar/>